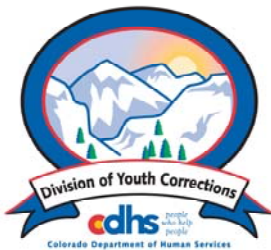


# JUNE 2009

# MONTHLY POPULATION REPORT

---

Prepared by the Division of Youth Corrections Research and Evaluation Unit July 22, 2009



**Colorado Department of Human Services**  
**Division of Youth Corrections**

---

Working with Colorado Communities to Achieve Justice

# June 2009

## DYC Population Report

<b>I.</b>	<b>Summary Population Data</b>	<b>1</b>
<b>II.</b>	<b>Detention ADP by Facility</b>	<b>2</b>
<b>III.</b>	<b>Commitment Services</b>	
	A. State and Contract Secure ADP by Facility	<b>3</b>
	B. Community/Other Residential ADP by Facility	<b>4</b>
<b>IV.</b>	<b>New Commitments and ADP by Region</b>	<b>5</b>
<b>V.</b>	<b>Parole Services</b>	<b>6</b>

# June 2009 DYC Population Report

## I. Summary Population Data\*

DETAINED YOUTH	Average Daily Population (ADP)			Length of Stay (LOS)
	June 2009	% Change from prev. mo.	YTD	YTD
State-Operated	367.2	-2.6%	376.7	13.9 days
Contracted Staff Secure	24.6	4.2%	22.1	13.3 days
<b>Total Detained</b>	<b>391.7</b>	<b>-2.2%</b>	<b>398.8</b>	<b>13.9 days</b>

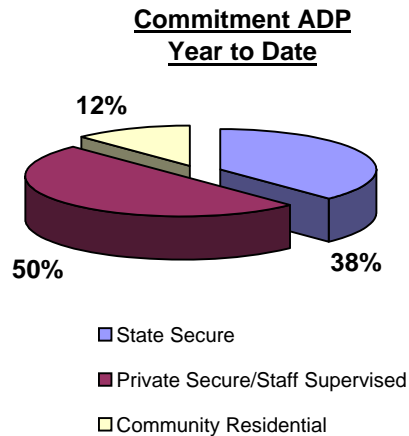
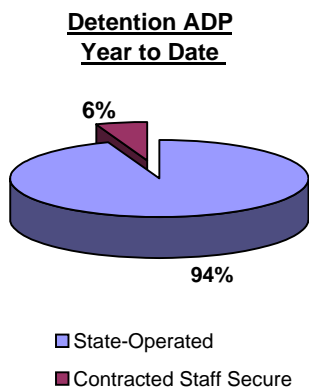
COMMITTED YOUTH	Average Daily Population (ADP)			Length of Stay (LOS)
	June 2009		YTD	YTD
State Secure	477.9	1.0%	456.6	
Private Secure/Staff Supervised	600.1	-1.1%	602.6	
Community Residential	143.7	-2.6%	146.1	
Other Residential	20.1	6.9%	23.0	
<b>Total Committed Residential</b>	<b>1,241.8</b>	<b>-0.4%</b>	<b>1,228.3</b>	<b>19.0 months</b>
<i>Committed Residential w/o Boulder</i>	<i>1,235.8</i>	<i>-0.3%</i>	<i>1,222.1</i>	

PAROLED YOUTH	Average Daily Population (ADP)			Length of Stay (LOS)
	June 2009		YTD	YTD
<b>Total Paroled</b>	<b>394.5</b>	<b>1.5%</b>	<b>434.9</b>	<b>6.6 months</b>

TOTAL STATEWIDE ADP	June 2009	% Change	YTD
	<b>2,027.9</b>	<b>-0.4%</b>	<b>2,062.1</b>

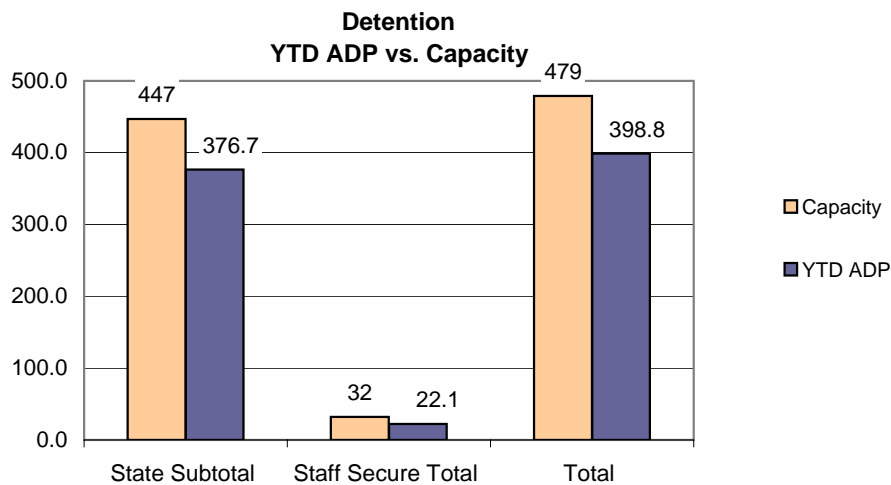


\*Due to rounding, totals shown may not be an exact sum of the subtotals

# June 2009 DYC Population Report

## II. Detention Program Services Detention Data by Facility

Facility	Operating Capacity	Average Daily Population			New Admissions		YTD LOS in Days
		June 2009	YTD	YTD % of Capacity	June 2009	YTD	LOS
<i>State Operated Detention</i>							
Adams	29	23.1	23.5	81.1%	70	795	10.9
Gilliam	73	63.9	67.1	91.9%	86	1,205	20.0
Grand Mesa	24	17.8	19.3	80.6%	47	502	13.3
Marvin Foote	92	74.7	81.2	88.2%	133	1,768	16.4
Mount View	60	40.9	46.5	77.5%	80	1,080	15.6
Platte Valley	69	64.3	62.8	91.0%	150	1,836	12.2
Pueblo	42	36.0	30.3	72.2%	110	1,058	10.4
Spring Creek	58	46.5	46.0	79.4%	83	1,450	11.2
<i>State Subtotal</i>	<i>447</i>	<i>367.2</i>	<i>376.7</i>	<i>84.3%</i>	<i>759</i>	<i>9,694</i>	<i>13.9</i>
<i>Staff Secure Detention</i>							
Brown Center	2	1.9	1.5	76.7%	1	31	18.0
Hilltop	7	4.8	4.2	59.6%	4	99	15.0
Midway (Remington)	8	5.9	5.5	68.5%	23	213	9.7
Robert DeNier	9	9.0	7.9	87.7%	14	170	16.3
Youthtrack San Luis Valley	6	2.9	3.0	49.8%	7	88	12.4
<i>Staff Secure Total</i>	<i>32</i>	<i>24.6</i>	<i>22.1</i>	<i>68.9%</i>	<i>49</i>	<i>601</i>	<i>13.3</i>
<b>TOTAL</b>	<b>479</b>	<b>391.7</b>	<b>398.8</b>	<b>83.3%</b>	<b>808</b>	<b>10,295</b>	<b>13.9</b>



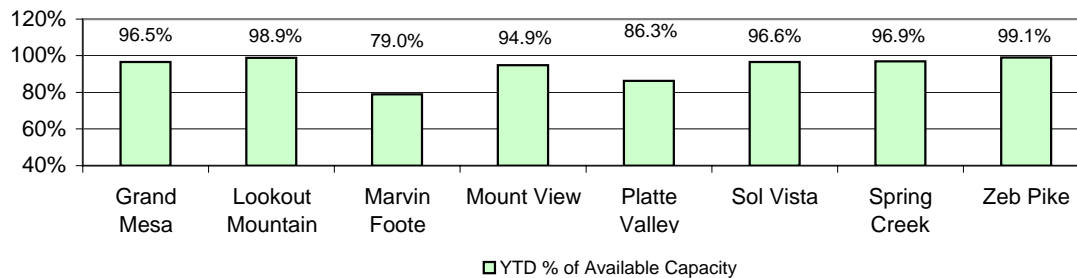
# June 2009 DYC Population Report

## III. Commitment Services

### A. State and Contract Secure ADP by Facility

Facility	<u>Operational Capacity (YTD)</u>	<u>June 2009</u>	<u>YTD</u>	<u>YTD % of Operational Capacity</u>	<u>YTD % of Current Available Capacity</u>
<b>State Secure</b>					
Adams	0	0.3	0.7	N/A	N/A
Gilliam	0	0.8	0.6	N/A	N/A
Grand Mesa	44	47.3	42.5	96.5%	96.5%
Lookout	168	167.6	166.2	98.9%	98.9%
Marvin Foote	22	16.8	17.4	79.0%	79.0%
Mount View	73	70.3	69.3	94.9%	94.9%
Platte Valley	66	72.5	57.0	86.3%	86.3%
Pueblo	0	0.4	0.5	N/A	N/A
Sol Vista	20	17.7	19.3	96.6%	96.6%
Spring Creek	45	45.1	43.6	96.9%	96.9%
Zeb Pike	40	39.0	39.6	99.1%	99.1%
<i>State Total</i>	<i>478.0</i>	<i>477.9</i>	<i>456.6</i>	<i>95.5%</i>	<i>95.5%</i>
<b>Contract Secure/Staff Supervised</b>					
Alternative Homes For Youth - Greeley		7.0	9.0		
Betty K. Marler Center		41.0	40.6		
Brown Center		3.0	1.0		
Childrens Ark		8.1	7.1		
Devereux Cleo Wallace		16.9	17.0		
El Pueblo Ranch		0.0	1.7		
Gateway Residential Program		3.5	2.5		
Griffith Center, Grand Ave Girls (WR)		0.0	0.5		
Griffith Centers for Children		1.6	0.3		
Hand Up Homes for Youth - West		3.0	3.1		
Hilltop (Residential Youth Services)		11.3	9.9		
Jefferson Hills		13.8	23.9		
Jefferson Hills Aurora		38.7	37.7		
Mountain Star Center		2.0	3.3		
Ridge View		410.3	404.8		
Robert DeNier		11.4	13.6		
Southern Peaks		21.3	21.7		
Third Way Center - Lowry		6.4	4.0		
Youth Villages		1.0	1.0		
<i>Contract Secure Subtotal</i>		<i>600.1</i>	<i>602.6</i>		

**State Secure Commitment  
Percent of Available Capacity by Facility**



# June 2009

## DYC Population Report

### III. Commitment Services Continued

#### B. Community/Other Residential APD by Facility

<u>Facility</u>	<u>June 2009</u>	<u>YTD</u>
<b>Community</b>		
Ariel Clinical Services	2.0	1.1
Boulder Community Treatment Center	0.0	1.1
Dale House Project	11.1	10.9
Daybreak & Daybreak Princeton	7.7	4.6
Denver Area Youth Services (DAYS)	4.2	4.0
Gateway Youth and Family Services	1.4	1.8
Griffith Centers (SR)	2.7	2.8
Job Corps	3.9	3.5
Kidz Ark New Raymer Ranch	0.1	1.2
Kidz Ark Sterling	1.0	1.3
Lost and Found Inc., Arvada	8.8	9.1
Lost and Found Inc., Morrison	3.1	2.2
Marilee Center	0.0	0.7
Mesa County Community Corrections	3.1	5.6
Mt Evans Qualifying House	12.4	11.8
Reflections For Youth Inc., Grismore	0.0	0.4
Reflections For Youth Inc., Prairie View	1.0	1.7
Reflections For Youth Inc., Wilderness	0.0	0.5
ROP-Canyon State Academy	1.0	0.8
Southwest Colorado Community Corrections	0.6	0.7
Summit Treatment Service, Inc	13.3	15.0
Synergy Administration	8.8	6.9
Third Way Center	3.0	2.7
Third Way Center, Pontiac	3.9	4.6
Third Way Center, York	8.1	4.1
Third Way Center, Lincoln	2.8	4.4
Turning Point Center (Boys Residential)	9.6	9.2
Turning Point, Mathews St.	7.9	7.8
Youthtrack, Jeffco	0.3	2.8
Youthtrack, San Luis Valley	2.8	3.5
Youthtrack, Work and Learn	10.2	10.3
Youth Ventures	8.9	9.0
<i>Community Subtotal</i>	<i>143.7</i>	<i>146.1</i>
<i>Private Contract Total</i>	<i>743.8</i>	<i>748.7</i>
<b>Other Residential</b>		
Job Corps Parole Program (Federally funded)	4.7	4.1
Shelter Care (short term)	3.4	3.0
Hospital	0.3	0.4
Residential MH Program	3.1	4.3
Residential Drug/Alcohol Program	0.2	0.6
Residential Work Program	1.2	1.5
Other Mental Health Facility	0.0	0.0
CMHI-Ft.Logan	0.8	0.9
CMHI-Pueblo	4.3	3.5
Immigration Detention Facility	0.4	0.1
Other ADP	1.7	4.4
<i>Other Residential Total</i>	<i>20.1</i>	<i>23.0</i>
<b>RESIDENTIAL TOTAL</b>	<b>1,241.8</b>	<b>1,228.3</b>

# June 2009 DYC Population Report

## IV. Commitment ADP and New Commitments by Region

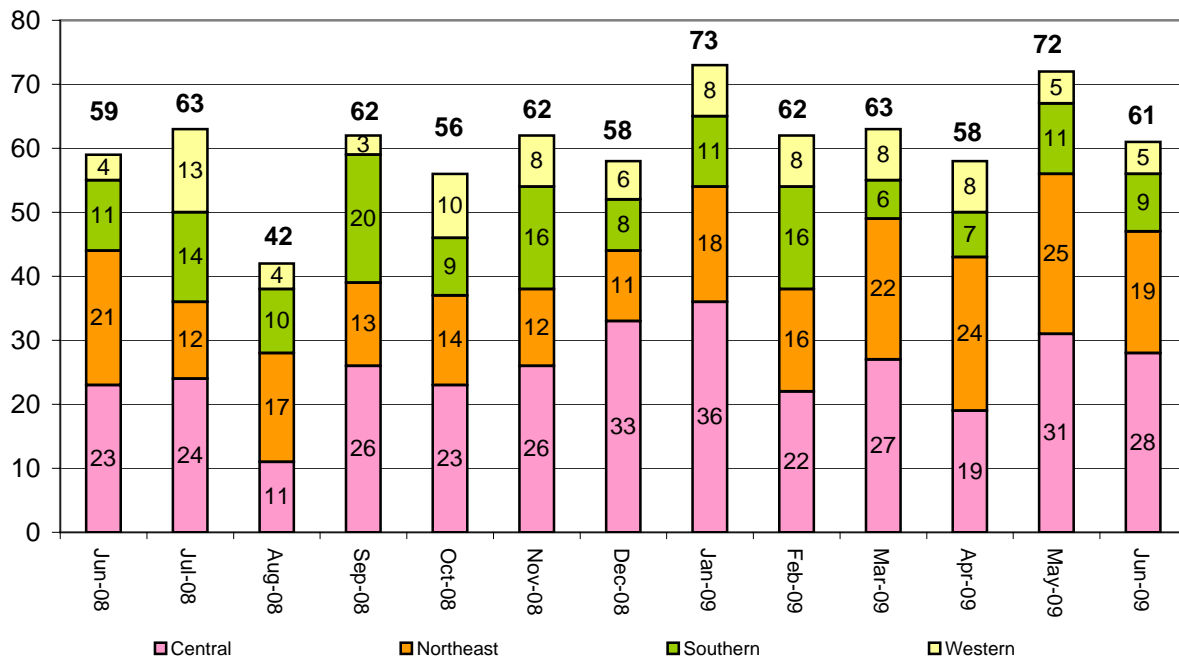
### Commitment ADP by Region

Region	June 2009	% Change from prev. mo.	YTD
Central Region	549.6	0.0%	530.3
Northeast Region	324.8	0.8%	326.6
Southern Region	242.2	-2.0%	251.7
Western Region	125.1	-1.5%	119.7
<b>Commitment ADP Total</b>	<b>1,241.8</b>	<b>-0.4%</b>	<b>1,228.3</b>

### New Commitments by Region

	June 2009	YTD	% Change from last YTD	June 2008	Last YTD
Central Region	28	325	0.0%	23	325
Northeast Region	19	202	-17.6%	21	245
Southern Region	9	141	-3.4%	11	146
Western Region	5	91	18.2%	4	77
<b>New Commitment Total</b>	<b>61</b>	<b>759</b>	<b>-4.3%</b>	<b>59</b>	<b>793</b>

### Monthly New Commitments



# June 2009 DYC Population Report

## V. Parole Services

Parole ADP by Region				
	<u>June 2009</u>	<u>YTD</u>	<u>Last YTD</u>	<u>% Change from last YTD</u>
Central Region	157.8	174.9	215.1	-18.7%
Northeast Region	131.7	129.1	137.5	-6.1%
Southern Region	71.6	88.6	105.9	-16.3%
Western Region	33.4	42.4	50.9	-16.8%
<b>Parole Total</b>	<b>394.5</b>	<b>434.9</b>	<b>509.3</b>	<b>-14.6%</b>

	Parole Intakes		Parole Discharges		Parole LOS
	<u>June 2009</u>	<u>YTD</u>	<u>June 2009</u>	<u>YTD</u>	<u>YTD</u>
Central Region	22	291	25	344	6.9
Northeast Region	17	220	23	237	6.2
Southern Region	18	148	10	180	6.6
Western Region	12	79	9	87	6.5
<b>Parole Total</b>	<b>69</b>	<b>738</b>	<b>67</b>	<b>848</b>	<b>6.6</b>

### Monthly Parole ADP

