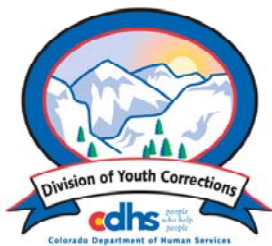


MAY 2009 MONTHLY POPULATION REPORT

Prepared by the Division of Youth Corrections Research and Evaluation Unit June 17, 2009



Colorado Department of Human Services
Division of Youth Corrections

Working with Colorado Communities to Achieve Justice

May 2009

DYC Population Report

I.	Summary Population Data	1
II.	Detention ADP by Facility	2
III.	Commitment Services	
	A. State and Contract Secure ADP by Facility	3
	B. Community/Other Residential ADP by Facility	4
IV.	New Commitments and ADP by Region	5
V.	Parole Services	6

May 2009 DYC Population Report

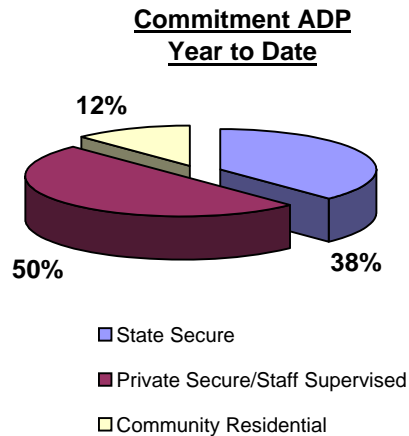
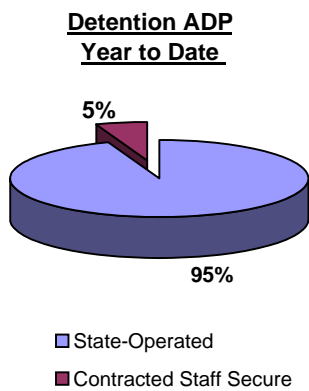
I. Summary Population Data*

DETAINED YOUTH	Average Daily Population (ADP)			Length of Stay (LOS)
	May 2009	% Change from prev. mo.	YTD	YTD
State-Operated	377.0	1.9%	377.9	13.9 days
Contracted Staff Secure	23.6	-1.9%	21.8	13.2 days
Total Detained	400.6	1.7%	399.8	13.9 days

COMMITTED YOUTH	Average Daily Population (ADP)			Length of Stay (LOS)
	May 2009		YTD	YTD
State Secure	473.2	3.5%	454.7	
Private Secure/Staff Supervised	606.9	-1.3%	603.3	
Community Residential	147.5	-2.7%	145.9	
Other Residential	18.8	6.4%	23.0	
Total Committed Residential	1,246.4	0.4%	1,226.8	19.0 months
<i>Committed Residential w/o Boulder</i>	<i>1,239.5</i>	<i>0.3%</i>	<i>1,220.6</i>	

PAROLED YOUTH	Average Daily Population (ADP)			Length of Stay (LOS)
	May 2009		YTD	YTD
Total Paroled	388.7	-1.1%	438.2	6.6 months

TOTAL STATEWIDE ADP	May 2009	% Change	YTD
	2,035.6	0.4%	2,064.8

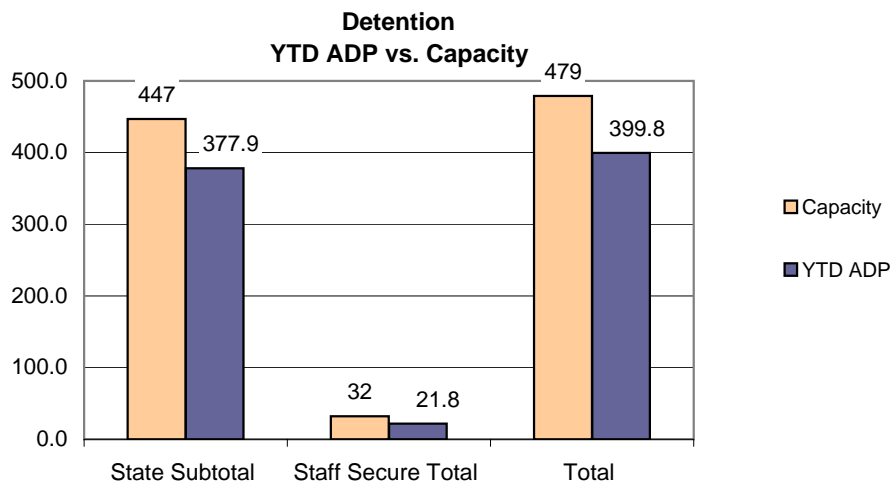


*Due to rounding, totals shown may not be an exact sum of the subtotals

May 2009 DYC Population Report

II. Detention Program Services Detention Data by Facility

Facility	Operating Capacity	Average Daily Population			New Admissions		YTD LOS in Days
		May 2009	YTD	YTD % of Capacity	May 2009	YTD	LOS
<i>State Operated Detention</i>							
Adams	29	19.6	23.6	81.3%	51	725	10.8
Gilliam	73	70.2	67.3	92.2%	101	1,119	19.6
Grand Mesa	24	19.0	19.5	81.1%	35	455	13.6
Marvin Foote	92	77.0	81.9	89.0%	142	1,636	16.5
Mount View	60	47.2	47.1	78.6%	117	1,002	15.6
Platte Valley	69	65.9	62.6	90.8%	180	1,686	12.2
Pueblo	42	29.7	29.8	71.0%	102	948	10.6
Spring Creek	58	48.4	46.0	79.3%	151	1,367	11.2
<i>State Subtotal</i>	<i>447</i>	<i>377.0</i>	<i>377.9</i>	<i>84.5%</i>	<i>879</i>	<i>8,938</i>	<i>13.9</i>
<i>Staff Secure Detention</i>							
Brown Center	2	1.9	1.5	74.9%	2	30	17.0
Hilltop	7	3.6	4.1	58.7%	5	95	13.9
Midway (Remington)	8	6.5	5.4	68.0%	23	190	9.8
Robert DeNier	9	7.4	7.8	86.6%	11	156	16.4
Youthtrack San Luis Valley	6	4.3	3.0	49.9%	9	81	12.3
<i>Staff Secure Total</i>	<i>32</i>	<i>23.6</i>	<i>21.8</i>	<i>68.2%</i>	<i>50</i>	<i>552</i>	<i>13.2</i>
TOTAL	479	400.6	399.8	83.5%	929	9,490	13.9



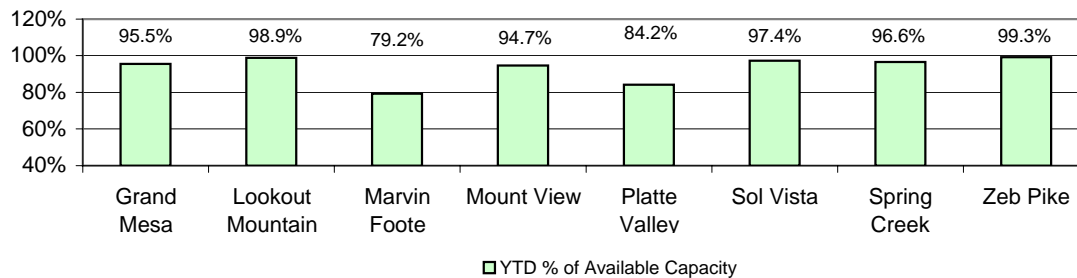
May 2009 DYC Population Report

III. Commitment Services

A. State and Contract Secure ADP by Facility

Facility	<u>Operational Capacity (YTD)</u>	<u>May 2009</u>	<u>YTD</u>	<u>YTD % of Operational Capacity</u>	<u>YTD % of Current Available Capacity</u>
State Secure					
Adams	0	0.7	0.7	N/A	N/A
Gilliam	0	0.7	0.5	N/A	N/A
Grand Mesa	44	47.7	42.0	95.5%	95.5%
Lookout	168	166.8	166.1	98.9%	98.9%
Marvin Foote	22	12.5	17.4	79.2%	79.2%
Mount View	73	72.9	69.2	94.7%	94.7%
Platte Valley	66	69.4	55.6	84.2%	84.2%
Pueblo	0	0.5	0.5	N/A	N/A
Sol Vista	20	19.3	19.5	97.4%	97.4%
Spring Creek	45	43.1	43.5	96.6%	96.6%
Zeb Pike	40	39.5	39.7	99.3%	99.3%
<i>State Total</i>	<i>478.0</i>	<i>473.2</i>	<i>454.7</i>	<i>95.1%</i>	<i>95.1%</i>
Contract Secure/Staff Supervised					
Alternative Homes For Youth - Greeley		6.6	9.2		
Betty K. Marler Center		40.7	40.6		
Brown Center		3.0	0.8		
Childrens Ark		9.3	7.1		
Devereux Cleo Wallace		15.0	17.0		
El Pueblo Ranch		0.6	1.9		
Gateway Residential Program		2.4	2.4		
Griffith Center, Grand Ave Girls (WR)		0.0	0.6		
Griffith Centers for Children		1.0	0.2		
Hand Up Homes for Youth - West		3.0	3.1		
Hilltop (Residential Youth Services)		11.8	9.7		
Jefferson Hills		13.8	24.8		
Jefferson Hills Aurora		37.5	37.7		
Mountain Star Center		2.6	3.4		
Ridge View		414.3	404.7		
Robert DeNier		12.3	13.8		
Southern Peaks		22.7	21.7		
Third Way Center - Lowry		9.3	3.8		
Youth Villages		1.0	1.0		
<i>Contract Secure Subtotal</i>		<i>606.9</i>	<i>603.3</i>		

**State Secure Commitment
Percent of Available Capacity by Facility**



May 2009

DYC Population Report

III. Commitment Services Continued

B. Community/Other Residential APD by Facility

<u>Facility</u>	<u>May 2009</u>	<u>YTD</u>
Community		
Ariel Clinical Services	2.0	1.0
Boulder Community Treatment Center	0.3	1.2
Dale House Project	10.6	10.8
Daybreak & Daybreak Princeton	8.3	4.4
Denver Area Youth Services (DAYS)	3.0	4.0
Gateway Youth and Family Services	1.7	1.9
Griffith Centers (SR)	0+0	2.9
Job Corps	4.5	3.5
Kidz Ark New Raymer Ranch	1.0	1.3
Kidz Ark Sterling	0.0	1.3
Lost and Found Inc., Arvada	10.6	9.1
Lost and Found Inc., Morrison	2.5	2.1
Marilee Center	0.0	0.8
Mesa County Community Corrections	4.5	5.8
Mt Evans Qualifying House	10.2	11.4
Reflections For Youth Inc., Grismore	0.6	0.4
Reflections For Youth Inc., Prairie View	1.1	1.8
Reflections For Youth Inc., Wilderness	0.0	0.6
ROP-Canyon State Academy	1.0	0.7
Southwest Colorado Community Corrections	1.0	0.8
Summit Treatment Service, Inc	13.6	15.2
Synergy Administration	10.8	6.7
Third Way Center	4.0	2.9
Third Way Center, Pontiac	4.0	4.7
Third Way Center, York	7.6	3.7
Third Way Center, Lincoln	3.5	4.3
Turning Point Center (Boys Residential)	8.2	9.2
Turning Point, Mathews St.	8.0	7.7
Youthtrack, Jeffco	3.0	3.1
Youthtrack, San Luis Valley	3.9	3.6
Youthtrack, Work and Learn	8.6	10.3
Youth Ventures	9.3	9.1
<i>Community Subtotal</i>	<i>147.5</i>	<i>145.9</i>
<i>Private Contract Total</i>	<i>754.4</i>	<i>749.2</i>
Other Residential		
Job Corps Parole Program (Federally funded)	3.3	4.1
Shelter Care (short term)	1.4	2.8
Hospital	0.1	0.4
Residential MH Program	4.3	4.5
Residential Drug/Alcohol Program	0.0	0.7
Residential Work Program	3.0	2.6
Other Mental Health Facility	0.0	0.1
CMHI-Ft.Logan	0.6	0.8
CMHI-Pueblo	3.5	3.5
Immigration Detention Facility	0.7	0.1
Other ADP	1.9	3.6
<i>Other Residential Total</i>	<i>18.8</i>	<i>23.0</i>
RESIDENTIAL TOTAL	1,246.4	1,226.8

May 2009 DYC Population Report

IV. Commitment ADP and New Commitments by Region

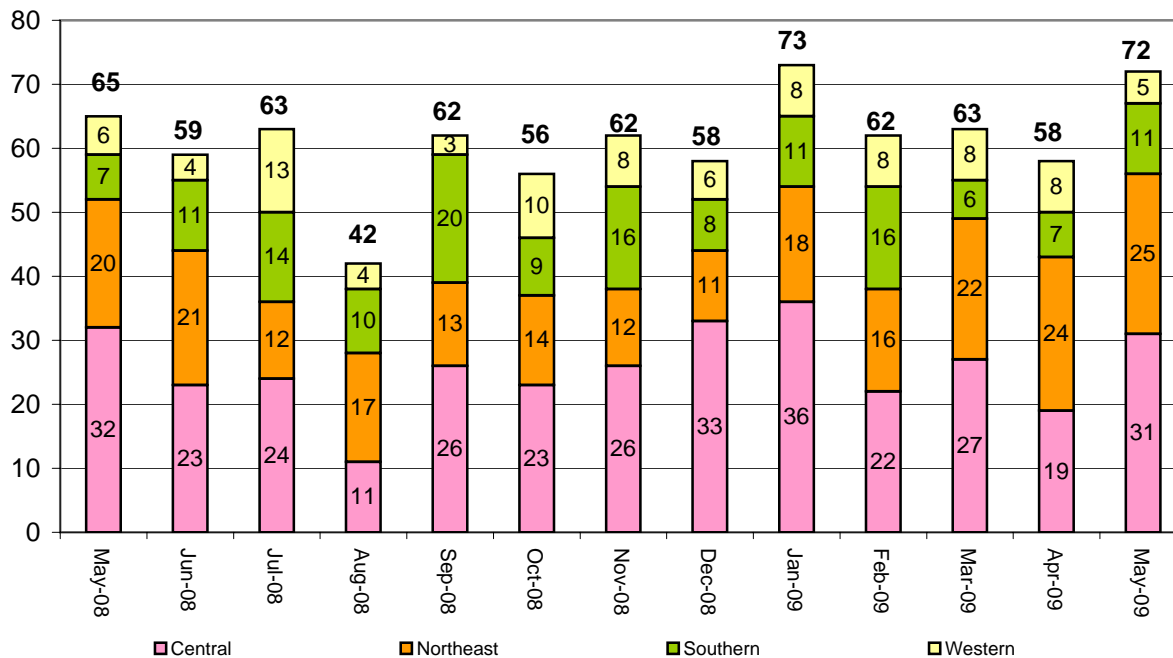
Commitment ADP by Region

Region	May 2009	% Change from prev. mo.	YTD
Central Region	549.9	0.8%	529.4
Northeast Region	322.2	2.8%	326.7
Southern Region	247.3	-2.2%	252.1
Western Region	127.0	-2.0%	118.6
Commitment ADP Total	1,246.4	0.4%	1,226.8

New Commitments by Region

	May 2009	YTD	% Change from last YTD	May 2008	Last YTD
Central Region	31	298	-0.3%	32	299
Northeast Region	25	183	-17.6%	20	222
Southern Region	11	132	-1.5%	7	134
Western Region	5	84	15.1%	6	73
New Commitment Total	72	697	-4.3%	65	728

Monthly New Commitments



May 2009 DYC Population Report

V. Parole Services

Parole ADP by Region				
	<u>May 2009</u>	<u>YTD</u>	<u>Last YTD</u>	<u>% Change from last YTD</u>
Central Region	160.4	177.0	216.0	-18.1%
Northeast Region	129.8	128.5	138.9	-7.5%
Southern Region	66.9	89.5	106.9	-16.2%
Western Region	31.5	43.2	52.8	-18.3%
Parole Total	388.7	438.2	514.5	-14.8%

	Parole Intakes		Parole Discharges		Parole LOS
	<u>May 2009</u>	<u>YTD</u>	<u>May 2009</u>	<u>YTD</u>	<u>YTD</u>
Central Region	20	270	14	316	6.9
Northeast Region	17	201	14	214	6.2
Southern Region	11	129	13	170	6.6
Western Region	3	67	4	78	6.2
Parole Total	51	667	45	778	6.6

Monthly Parole ADP

