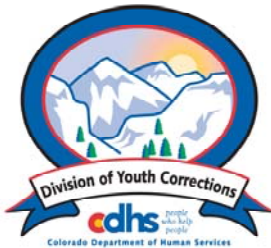


APRIL 2009 MONTHLY POPULATION REPORT

Prepared by the Division of Youth Corrections Research and Evaluation Unit May 20, 2009



Colorado Department of Human Services
Division of Youth Corrections

Working with Colorado Communities to Achieve Justice

April 2009

DYC Population Report

I.	Summary Population Data	1
II.	Detention ADP by Facility	2
III.	Commitment Services	
	A. State and Contract Secure ADP by Facility	3
	B. Community/Other Residential ADP by Facility	4
IV.	New Commitments and ADP by Region	5
V.	Parole Services	6

April 2009 DYC Population Report

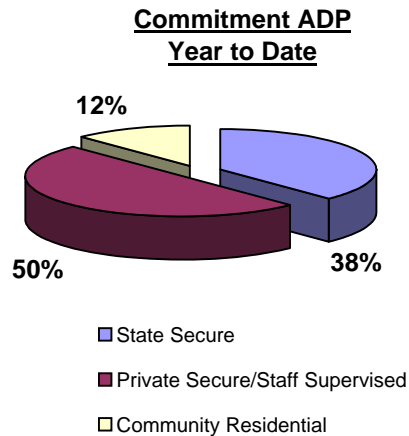
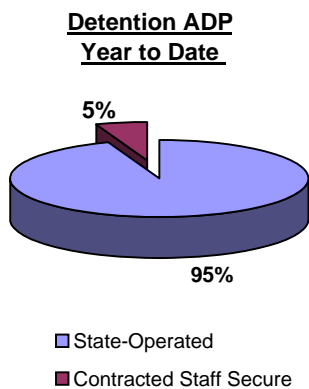
I. Summary Population Data*

DETAINED YOUTH	Average Daily Population (ADP)			Length of Stay (LOS)
	April 2009	% Change from prev. mo.	YTD	YTD
State-Operated	370.0	-6.0%	378.0	13.9 days
Contracted Staff Secure	24.0	25.8%	21.7	13.0 days
Total Detained	394.0	-4.6%	399.7	13.9 days

COMMITTED YOUTH	Average Daily Population (ADP)			Length of Stay (LOS)
	April 2009		YTD	YTD
State Secure	457.3	-2.1%	453.1	
Private Secure/Staff Supervised	614.6	1.6%	602.9	
Community Residential	151.6	2.2%	145.7	
Other Residential	17.7	-7.4%	23.9	
Total Committed Residential	1,241.2	0.1%	1,225.6	18.9 months
<i>Committed Residential w/o Boulder</i>	<i>1,235.2</i>	<i>0.1%</i>	<i>1,219.5</i>	

PAROLED YOUTH	Average Daily Population (ADP)			Length of Stay (LOS)
	April 2009		YTD	YTD
Total Paroled	393.0	-0.6%	442.5	6.6 months

TOTAL STATEWIDE ADP	April 2009	% Change	YTD
	2,028.2	-1.0%	2,067.9

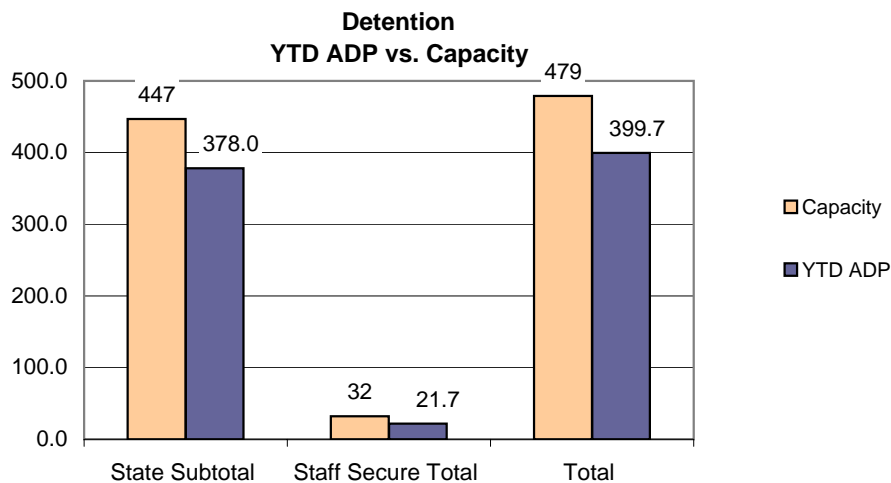


*Due to rounding, totals shown may not be an exact sum of the subtotals

April 2009 DYC Population Report

II. Detention ADP by Facility

Facility	Operating Capacity	Average Daily Population			New Admissions		YTD LOS in Days
		April 2009	YTD	YTD % of Capacity	April 2009	YTD	LOS
<i>State Operated Detention</i>							
Adams	29	17.7	24.0	82.7%	63	675	10.9
Gilliam	73	69.2	67.0	91.8%	127	1,018	19.7
Grand Mesa	24	20.2	19.5	81.4%	31	420	12.3
Marvin Foote	92	87.2	82.4	89.6%	144	1,494	16.1
Mount View	60	40.9	47.2	78.6%	107	885	15.9
Platte Valley	69	65.3	62.3	90.3%	187	1,506	12.4
Pueblo	42	26.9	29.8	71.0%	94	846	10.8
Spring Creek	58	42.6	45.8	78.9%	134	1,216	11.3
<i>State Subtotal</i>	<i>447</i>	<i>370.0</i>	<i>378.0</i>	<i>84.6%</i>	<i>887</i>	<i>8,060</i>	<i>13.9</i>
<i>Staff Secure Detention</i>							
Brown Center	2	1.3	1.5	73.1%	2	28	15.5
Hilltop	7	5.0	4.2	59.5%	10	90	13.3
Midway (Remington)	8	6.9	5.3	66.8%	22	167	9.9
Robert DeNier	9	7.7	7.9	87.4%	13	145	16.1
Youthtrack San Luis Valley	6	3.1	2.9	47.7%	14	72	12.4
<i>Staff Secure Total</i>	<i>32</i>	<i>24.0</i>	<i>21.7</i>	<i>67.8%</i>	<i>61</i>	<i>502</i>	<i>13.0</i>
TOTAL	479	394.0	399.7	83.5%	948	8,562	13.9



April 2009 DYC Population Report

III. Commitment Services

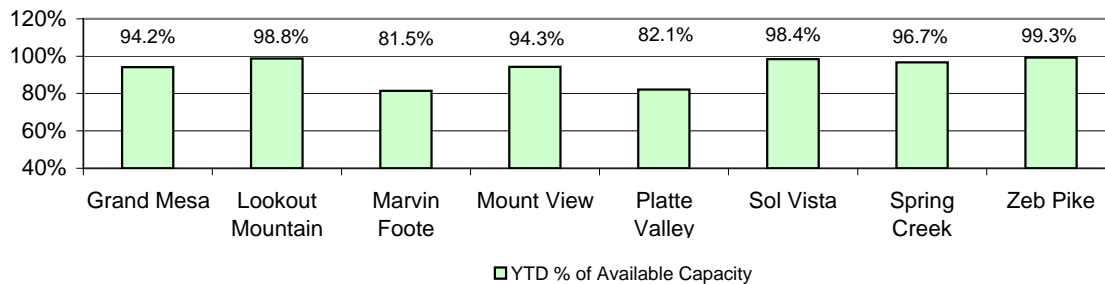
A. State and Contract Secure ADP by Facility

<u>Facility</u>	<u>Operational Capacity (YTD)</u>	<u>April 2009</u>	<u>YTD</u>	<u>YTD % of Operational Capacity</u>	<u>YTD % of Current Available Capacity</u>
State Secure					
Adams	0	1.1	0.7	N/A	N/A
Gilliam	0	0.3	0.5	N/A	N/A
Grand Mesa	44	46.6	41.5	94.2%	94.2%
Lookout	168	165.9	166.0	98.8%	98.8%
Marvin Foote	22	13.9	17.9	81.5%	81.5%
Mount View	73	63.5	68.9	94.3%	94.3%
Platte Valley	66	66.8	54.2	82.1%	82.1%
Pueblo	0	0.0	0.5	N/A	N/A
Sol Vista	20	21.0	19.7	98.4%	98.4%
Spring Creek	45	38.9	43.5	96.7%	96.7%
Zeb Pike	40	39.4	39.7	99.3%	99.3%
<i>State Total</i>	<i>478.0</i>	<i>457.3</i>	<i>453.1</i>	<i>94.8%</i>	<i>94.8%</i>

Contract Secure/Staff Supervised

Alternative Homes For Youth - Greeley		5.5	9.4
Betty K. Marler Center		41.0	40.6
Brown Center		3.0	0.6
Childrens Ark		7.8	6.8
Devereux Cleo Wallace		16.4	17.2
El Pueblo Ranch		1.7	2.0
Gateway Residential Program		2.2	2.4
Griffith Center, Grand Ave Girls (WR)		0.0	0.6
Griffith Centers for Children		0.8	0.1
Hand Up Homes for Youth - West		3.0	3.1
Hilltop (Residential Youth Services)		11.6	9.5
Jefferson Hills		15.3	25.9
Jefferson Hills Aurora		40.0	37.7
Mountain Star Center		3.0	3.5
Ridge View		418.0	403.7
Robert DeNier		13.5	13.9
Southern Peaks		24.3	21.6
Third Way Center - Lowry		6.8	3.2
Youth Villages		1.0	1.0
<i>Contract Secure Subtotal</i>		<i>614.6</i>	<i>602.9</i>

**State Secure Commitment
Percent of Available Capacity by Facility**



April 2009

DYC Population Report

III. Commitment Services Continued

B. Community/Other Residential APD by Facility

<u>Facility</u>	<u>April 2009</u>	<u>YTD</u>
Community		
Ariel Clinical Services	1.8	0.9
Boulder Community Treatment Center	2.0	1.3
Dale House Project	10.3	10.8
Daybreak & Daybreak Princeton	5.7	4.0
Denver Area Youth Services (DAYS)	3.8	4.1
Gateway Youth and Family Services	2.0	1.9
Griffith Centers (SR)	0.5	3.1
Job Corps	4.4	3.4
Kidz Ark New Raymer Ranch	1.0	1.3
Kidz Ark Sterling	0.0	1.4
Lost and Found Inc., Arvada	11.8	9.0
Lost and Found Inc., Morrison	2.3	2.1
Marilee Center	0.0	0.9
Mesa County Community Corrections	6.0	5.9
Mt Evans Qualifying House	11.1	11.5
Reflections For Youth Inc., Grismore	1.0	0.4
Reflections For Youth Inc., Prairie View	1.2	1.9
Reflections For Youth Inc., Wilderness	0.0	0.6
ROP-Canyon State Academy	1.0	0.7
Southwest Colorado Community Corrections	1.0	0.7
Summit Treatment Service, Inc	15.2	15.4
Synergy Administration	10.5	6.3
Third Way Center	4.3	2.8
Third Way Center, Pontiac	3.9	4.8
Third Way Center, York	6.0	3.3
Third Way Center, Lincoln	3.4	4.4
Turning Point Center (Boys Residential)	6.2	9.3
Turning Point, Mathews St.	8.1	7.7
Youthtrack, Jeffco	3.1	3.1
Youthtrack, San Luis Valley	5.8	3.6
Youthtrack, Work and Learn	9.8	10.5
Youth Ventures	8.5	9.0
<i>Community Subtotal</i>	<i>151.6</i>	<i>145.7</i>
<i>Private Contract Total</i>	<i>766.2</i>	<i>748.6</i>
Other Residential		
Job Corps Parole Program (Federally funded)	4.4	4.2
Shelter Care (short term)	1.1	3.0
Hospital	0.0	0.5
Residential MH Program	5.2	5.3
Residential Drug/Alcohol Program	0.0	0.7
Residential Work Program	2.0	1.5
Other Mental Health Facility	0.2	0.1
CMHI-Ft.Logan	0.8	0.9
CMHI-Pueblo	3.2	3.3
Immigration Detention Facility	0.0	0.0
Other ADP	0.8	4.6
<i>Other Residential Total</i>	<i>17.7</i>	<i>23.9</i>
RESIDENTIAL TOTAL	1,241.2	1,225.6

April 2009 DYC Population Report

IV. Commitment ADP and New Commitments by Region

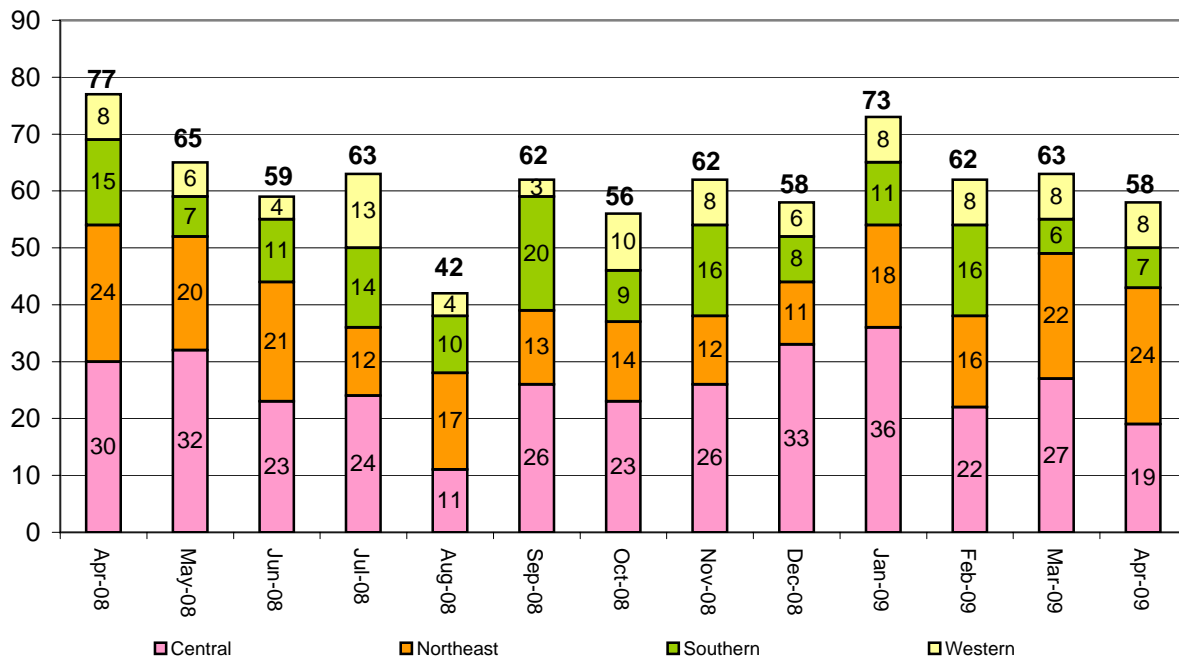
Commitment ADP by Region

Region	April 2009	% Change from prev. mo.	YTD
Central Region	545.3	0.0%	527.4
Northeast Region	313.5	0.0%	326.5
Southern Region	252.8	-0.8%	254.0
Western Region	129.6	3.0%	117.8
Commitment ADP Total	1,241.2	0.1%	1,225.6

New Commitments by Region

	April 2009	YTD	% Change from last YTD	April 2008	Last YTD
Central Region	19	263	1.9%	30	258
Northeast Region	24	158	-21.8%	24	202
Southern Region	7	120	-5.5%	15	127
Western Region	8	79	17.9%	8	67
New Commitment Total	58	620	-5.2%	77	654

Monthly New Commitments



April 2009 DYC Population Report

V. Parole Services

Parole ADP by Region				
	<u>April 2009</u>	<u>YTD</u>	<u>Last YTD</u>	<u>% Change from last YTD</u>
Central Region	157.9	179.8	218.1	-17.5%
Northeast Region	124.8	127.9	140.1	-8.7%
Southern Region	74.2	91.4	106.5	-14.1%
Western Region	36.1	43.3	50.5	-14.2%
Parole Total	393.0	442.5	515.2	-14.1%

	<u>Parole Intakes</u>		<u>Parole Discharges</u>		<u>Parole LOS</u>
	<u>April 2009</u>	<u>YTD</u>	<u>April 2009</u>	<u>YTD</u>	<u>YTD</u>
Central Region	25	250	26	302	6.9
Northeast Region	17	182	15	199	6.2
Southern Region	10	119	14	157	6.6
Western Region	5	64	12	73	6.2
Parole Total	57	615	67	731	6.6

Monthly Parole ADP

