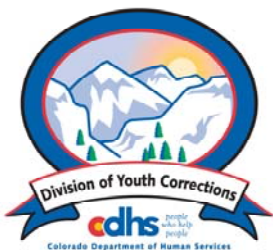


MARCH 2009 MONTHLY POPULATION REPORT

Prepared by the Division of Youth Corrections Research and Evaluation Unit April 28, 2009



Colorado Department of Human Services
Division of Youth Corrections

Working with Colorado Communities to Achieve Justice

March 2009

DYC Population Report

I.	Summary Population Data	1
II.	Detention ADP by Facility	2
III.	Commitment Services	
	A. State and Contract Secure ADP by Facility	3
	B. Community/Other Residential ADP by Facility	4
IV.	New Commitments	5
V.	Parole Services	6

March 2009 DYC Population Report

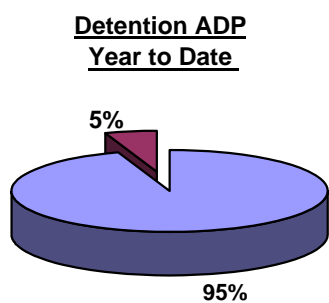
I. Summary Population Data*

DETAINED YOUTH	Average Daily Population (ADP)			Length of Stay (LOS)
	March 2009	% Change from prev. mo.	YTD	YTD
State-Operated	393.8	1.8%	379.3	14.0 days
Contracted Staff Secure	19.1	-6.0%	21.4	13.4 days
Total Detained	412.9	1.4%	400.8	14.0 days

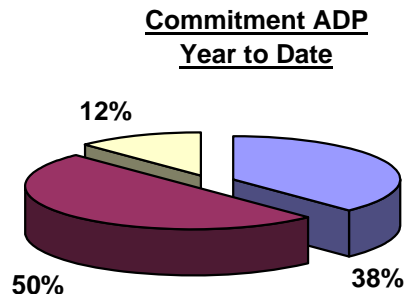
COMMITTED YOUTH	Average Daily Population (ADP)			Length of Stay (LOS)
	March 2009		YTD	YTD
State Secure	467.3	0.2%	452.6	
Private Secure/Staff Supervised	605.0	1.2%	601.6	
Community Residential	148.3	1.6%	145.1	
Other Residential**	19.1	-6.5%	24.5	
Total Committed Residential	1,239.7	0.8%	1,223.8	18.9 months
<i>Committed Residential w/o Boulder</i>	<i>1,233.6</i>	<i>0.8%</i>	<i>1,217.7</i>	

PAROLED YOUTH	Average Daily Population (ADP)			Length of Stay (LOS)
	March 2009		YTD	YTD
Total Paroled	395.5	-4.8%	445.3	6.6 months

TOTAL STATEWIDE ADP	March 2009	% Change	YTD
	2,048.0	-0.2%	2,069.9



■ State-Operated
■ Contracted Staff Secure



■ State Secure
■ Private Secure/Staff Supervised
■ Community Residential

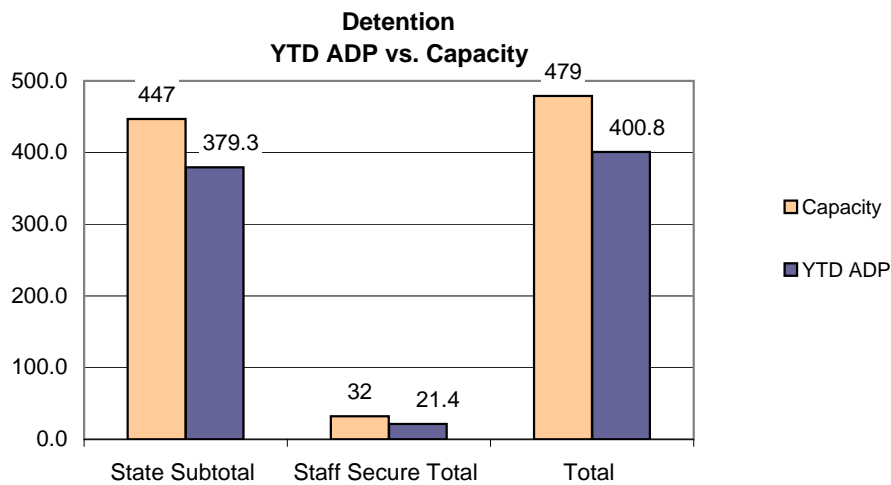
*Due to rounding, totals shown may not be an exact sum of the subtotals

**Includes Group Homes, Job Corps, Hospitals, Mental Health Institutes, Shelter Care, etc.

March 2009 DYC Population Report

II. Detention Program Services

Facility	Operating Capacity	Average Daily Population		YTD % of Capacity	New Admissions		YTD LOS in Days
		March 2009	YTD		March 2009	YTD	
<i>State Operated Detention</i>							
Adams	29	23.5	24.7	85.1%	88	614	11.0
Gilliam	73	70.4	66.8	91.5%	77	891	19.9
Grand Mesa	24	19.1	19.4	81.0%	46	389	12.3
Marvin Foote	92	86.3	81.9	89.0%	146	1,351	16.0
Mount View	60	48.1	47.8	79.7%	76	778	16.4
Platte Valley	69	66.0	62.4	90.5%	170	1,320	12.4
Pueblo	42	33.0	30.1	71.8%	95	752	10.9
Spring Creek	58	47.4	46.1	79.5%	117	1,082	11.3
<i>State Subtotal</i>	<i>447</i>	<i>393.8</i>	<i>379.3</i>	<i>84.9%</i>	<i>815</i>	<i>7,177</i>	<i>14.0</i>
<i>Staff Secure Detention</i>							
Brown Center	2	0.5	1.5	73.7%	2	26	15.5
Hilltop	7	4.4	4.1	58.1%	12	80	13.4
Midway (Remington)	8	7.4	5.2	64.7%	20	145	9.5
Robert DeNier	9	5.4	7.9	87.7%	13	132	16.7
Youthtrack San Luis Valley	6	1.3	2.8	47.3%	6	58	13.8
<i>Staff Secure Total</i>	<i>32</i>	<i>19.1</i>	<i>21.4</i>	<i>67.0%</i>	<i>53</i>	<i>441</i>	<i>13.4</i>
TOTAL	479	412.9	400.8	83.7%	868	7,618	14.0



March 2009 DYC Population Report

III. Commitment Services

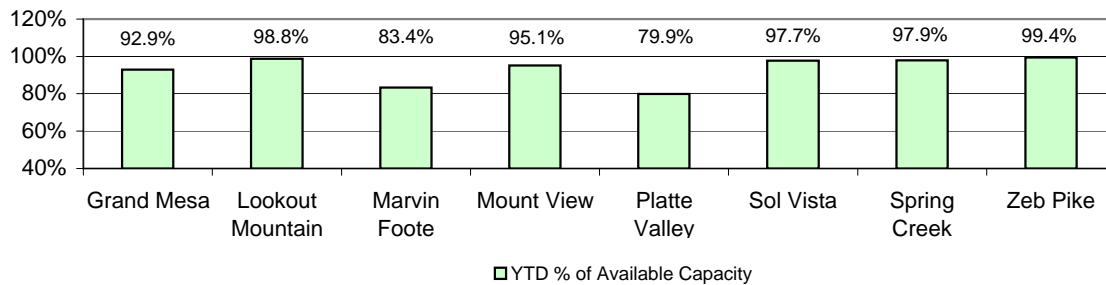
A. State and Contract Secure ADP by Facility

<u>Facility</u>	<u>Operational Capacity (YTD)</u>	<u>March 2009</u>	<u>YTD</u>	<u>YTD % of Operational Capacity</u>	<u>YTD % of Current Available Capacity</u>
State Secure					
Adams	0	0.7	0.7	N/A	N/A
Gilliam	0	0.7	0.6	N/A	N/A
Grand Mesa	44	47.2	40.9	92.9%	92.9%
Lookout	168	165.0	166.0	98.8%	98.8%
Marvin Foote	22	20.7	18.4	83.4%	83.4%
Mount View	73	68.9	69.4	95.1%	95.1%
Platte Valley	66	61.8	52.8	79.9%	79.9%
Pueblo	0	0.1	0.5	N/A	N/A
Sol Vista	20	20.6	19.5	97.7%	97.7%
Spring Creek	45	40.6	44.0	97.9%	97.9%
Zeb Pike	40	41.0	39.8	99.4%	99.4%
<i>State Subtotal</i>	<i>478.0</i>	<i>467.3</i>	<i>452.6</i>	<i>94.7%</i>	<i>94.7%</i>

Contract Secure/Staff Supervised

Alternative Homes For Youth - Greeley	6.8	9.9
Betty K. Marler Center	40.9	40.6
Brown Center	1.9	0.3
Childrens Ark	6.6	6.7
Devereux Cleo Wallace	16.4	17.2
El Pueblo Ranch	2.1	2.1
Gateway Residential Program	2.2	2.4
Griffith Center, Grand Ave Girls (WR)	0.0	0.7
Hand Up Homes for Youth - West	3.2	3.1
Hilltop (Residential Youth Services)	9.7	9.3
Jefferson Hills	16.3	27.1
Jefferson Hills Aurora	38.2	37.4
Mountain Star Center	3.0	3.5
Ridge View	418.3	402.2
Robert DeNier	12.3	14.0
Southern Peaks	22.1	21.3
Third Way Center - Lowry	4.1	2.9
Youth Villages	1.0	1.0
<i>Contract Secure Subtotal</i>	<i>605.0</i>	<i>601.6</i>

**State Secure Commitment
Percent of Available Capacity by Facility**



March 2009

DYC Population Report

III. Commitment Services Continued

B. Community/Other Residential APD by Facility, ADP by Region

<u>Facility</u>	<u>March 2009</u>	<u>YTD</u>
Community		
Ariel Clinical Services	1.0	0.8
Boulder Community Treatment Center	2.0	1.2
Dale House Project	9.8	10.9
Daybreak & Daybreak Princeton	3.0	3.8
Denver Area Youth Services (DAYS)	3.1	4.1
Gateway Youth and Family Services	0.4	1.9
Griffith Centers (SR)	0.2	3.4
Job Corps	6.0	3.2
Kidz Ark New Raymer Ranch	1.0	1.4
Kidz Ark Sterling	0.4	1.6
Lost and Found Inc., Arvada	11.3	8.7
Lost and Found Inc., Morrison	1.7	2.0
Marilee Center	0.0	1.0
Mesa County Community Corrections	6.1	5.9
Mt Evans Qualifying House	13.4	11.5
Reflections For Youth Inc., Grismore	1.0	0.3
Reflections For Youth Inc., Prairie View	1.0	1.9
Reflections For Youth Inc., Wilderness	0.0	0.7
ROP-Canyon State Academy	1.0	0.7
Southwest Colorado Community Corrections	1.0	0.7
Summit Treatment Service, Inc	15.0	15.4
Synergy Administration	10.2	5.8
Third Way Center	4.2	2.6
Third Way Center, Pontiac	3.6	4.9
Third Way Center, York	4.9	3.1
Third Way Center, Lincoln	3.6	4.5
Turning Point Center (Boys Residential)	5.6	9.6
Turning Point, Mathews St.	7.3	7.7
Youthtrack, Jeffco	4.0	3.1
Youthtrack, San Luis Valley	6.0	3.3
Youthtrack, Work and Learn	11.4	10.5
Youth Ventures	9.2	9.1
<i>Community Subtotal</i>	<i>148.3</i>	<i>145.1</i>
<i>Private Contract Total</i>	<i>753.3</i>	<i>746.7</i>
Mental Health Institutes	4.4	4.3
<i>Other Residential*</i>	<i>14.7</i>	<i>20.2</i>
RESIDENTIAL TOTAL	1,239.7	1,223.8

ADP by Region

Region	<u>March 2009</u>	<u>% Change</u>	<u>YTD</u>
		<u>from prev. mo.</u>	
Central	545.3	1.5%	524.7
Northeast	313.7	-1.2%	329.2
Southern	254.8	0.0%	253.2
Western	125.8	4.1%	116.8
Total	1,239.7	0.8%	1,223.8

*Includes Group Homes, Job Corps, Hospitals, Shelter Care, etc.

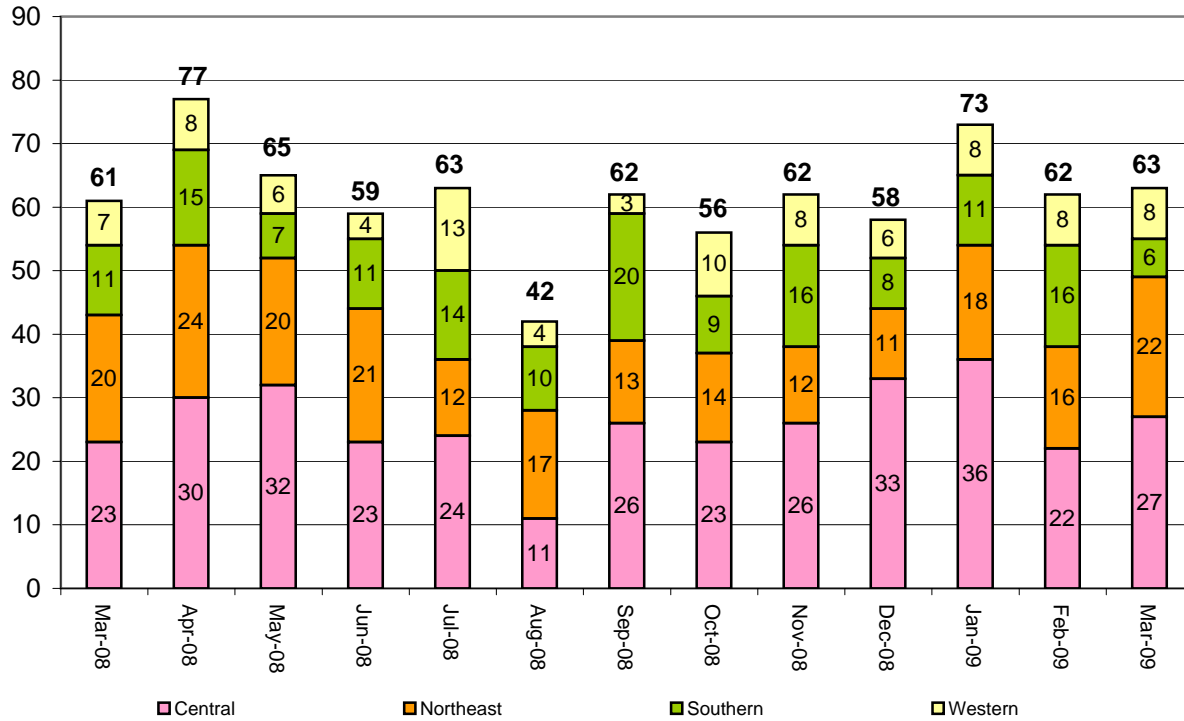
March 2009 DYC Population Report

IV. New Commitments

New Commitments by Region

	<u>March 2009</u>	<u>YTD</u>	<u>% Change from last YTD</u>	<u>March 2008</u>	<u>Last YTD</u>
Central Region	27	240	6%	23	227
Northeast Region	22	134	-24%	20	177
Southern Region	6	112	0%	11	112
Western Region	8	71	20%	7	59
New Commitment Total	63	557	-3%	61	575

Monthly New Commitments



March 2009 DYC Population Report

V. Parole Services

Parole ADP by Region				
	<u>March 2009</u>	<u>YTD</u>	<u>Last YTD</u>	<u>% Change from last YTD</u>
Central Region	156.8	180.5	218.7	-17.5%
Northeast Region	124.3	128.3	141.9	-9.6%
Southern Region	74.6	92.7	106.3	-12.8%
Western Region	39.7	43.7	51.8	-15.6%
Parole Total	395.5	445.3	518.7	-14.1%

	<u>Parole Intakes</u>		<u>Parole Discharges</u>		<u>Parole LOS</u>
	<u>March 2009</u>	<u>YTD</u>	<u>March 2009</u>	<u>YTD</u>	<u>YTD</u>
Central Region	21	223	30	276	6.9
Northeast Region	22	166	22	184	6.3
Southern Region	8	108	10	141	6.5
Western Region	3	57	5	59	6.4
Parole Total	54	554	67	660	6.6

Monthly Parole ADP

