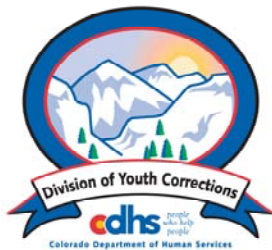


FEBRUARY 2009 MONTHLY POPULATION REPORT

Prepared by the Division of Youth Corrections Research and Evaluation Unit March 18, 2009



Colorado Department of Human Services
Division of Youth Corrections

Working with Colorado Communities to Achieve Justice

February 2009

DYC Population Report

I.	Summary Population Data	1
II.	Detention ADP by Facility	2
III.	Commitment Services	
	A. State and Contract Secure ADP by Facility	3
	B. Community/Other Residential ADP by Facility	4
IV.	New Commitments	5
V.	Parole Services	6

February 2009 DYC Population Report

I. Summary Population Data*

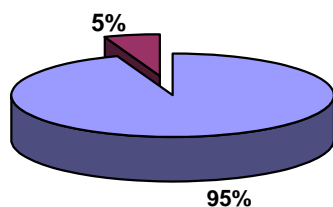
DETAINED YOUTH	Average Daily Population (ADP)		Length of Stay (LOS)
	February 2009	YTD	YTD
State-Operated	386.9	378.0	14.0 days
Contracted Staff Secure	20.3	21.8	13.8 days
Total Detained	407.1	399.8	14.0 days

COMMITTED YOUTH	Average Daily Population (ADP)		Length of Stay (LOS)
	February 2009	YTD	YTD
State Secure	466.2	451.1	
Private Secure/Staff Supervised	597.7	602.1	
Community Residential	146.0	144.5	
Other Residential**	20.4	24.3	
Total Committed Residential	1,230.3	1,222.0	18.7 months
<i>Committed Residential w/o Boulder</i>	<i>1,223.3</i>	<i>1,215.9</i>	

PAROLED YOUTH	Average Daily Population (ADP)		Length of Stay (LOS)
	February 2009	YTD	YTD
Total Paroled	415.5	453.7	6.6 months

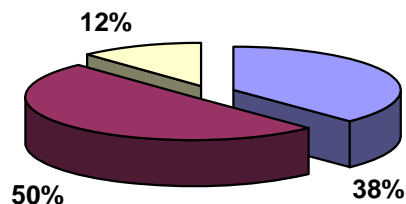
TOTAL STATEWIDE ADP	February 2009	YTD
	2,053.0	2,075.5

**Detention ADP
Year to Date**



■ State-Operated
■ Contracted Staff Secure

**Commitment ADP
Year to Date**



■ State Secure
■ Private Secure/Staff Supervised
■ Community Residential

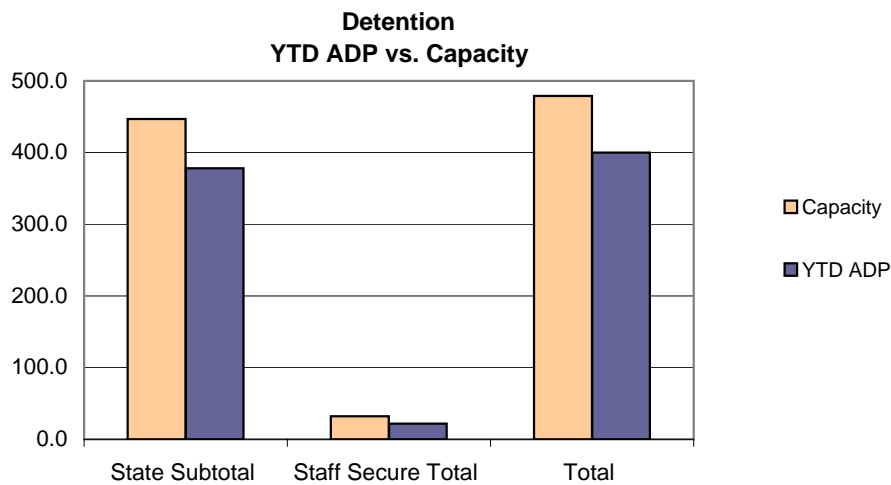
*Due to rounding, totals shown may not be an exact sum of the subtotals

**Includes Group Homes, Job Corps, Hospitals, Mental Health Institutes, Shelter Care, etc.

February 2009 DYC Population Report

II. Detention Program Services Continued Detention Data by Facility

Facility	Operating Capacity	Average Daily Population			New Admissions		YTD LOS in Days
		February 2009	YTD	YTD % of Capacity	February 2009	YTD	LOS
<i>State Operated Detention</i>							
Adams	29	20.0	24.8	85.4%	57	526	11.6
Gilliam	73	69.4	66.3	90.8%	93	814	19.4
Grand Mesa	24	18.9	19.5	81.3%	35	343	12.2
Marvin Foote	92	90.5	82.0	89.1%	139	1,207	15.7
Mount View	60	45.4	47.8	79.7%	87	701	16.3
Platte Valley	69	63.2	62.0	89.8%	133	1,151	12.6
Pueblo	42	27.9	29.8	70.9%	78	657	10.9
Spring Creek	58	51.5	46.0	79.2%	126	965	11.4
<i>State Subtotal</i>	<i>447</i>	<i>386.9</i>	<i>378.0</i>	<i>84.6%</i>	<i>748</i>	<i>6,364</i>	<i>14.0</i>
<i>Staff Secure Detention</i>							
Brown Center	2	1.8	1.6	80.0%	3	24	16.2
Hilltop	7	4.4	4.0	57.5%	9	68	14.0
Midway (Remington)	8	6.2	4.9	61.0%	12	125	9.7
Robert DeNier	9	6.0	8.3	92.0%	13	119	17.1
Youthtrack San Luis Valley	6	1.9	3.0	50.5%	4	52	14.3
<i>Staff Secure Total</i>	<i>32</i>	<i>20.3</i>	<i>21.8</i>	<i>68.2%</i>	<i>41</i>	<i>388</i>	<i>13.8</i>
TOTAL	479	407.1	399.8	83.5%	789	6,752	14.0



February 2009 DYC Population Report

III. Commitment Services

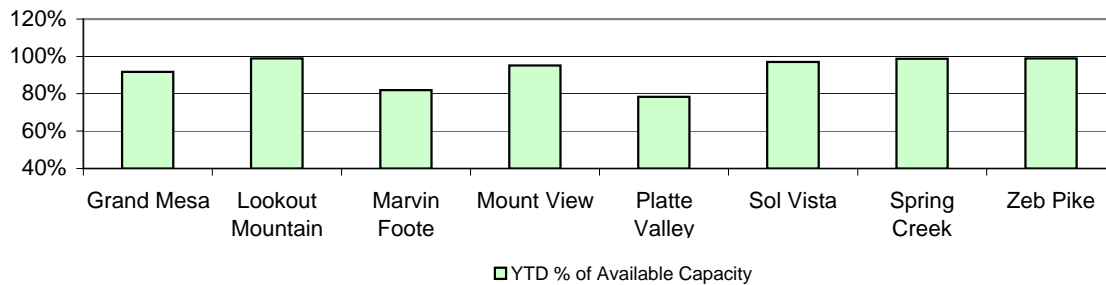
A. State and Contract Secure ADP by Facility

<u>Facility</u>	<u>Operational Capacity (YTD)</u>	<u>February 2009</u>	<u>YTD</u>	<u>YTD % of Operational Capacity</u>	<u>YTD % of Current Available Capacity</u>
State Secure					
Adams	0	0.0	0.7	N/A	N/A
Gilliam	0	0.8	0.6	N/A	N/A
Grand Mesa	44	46.1	40.4	91.7%	91.7%
Lookout	168	164.7	166.2	98.9%	98.9%
Marvin Foote	22	18.6	18.1	82.0%	82.0%
Mount View	73	74.1	69.5	95.2%	95.2%
Platte Valley	66	57.2	51.7	78.3%	78.3%
Pueblo	0	0.5	0.6	N/A	N/A
Sol Vista	20	20.2	19.4	97.0%	97.0%
Spring Creek	45	44.8	44.5	98.8%	98.8%
Zeb Pike	40	39.1	39.6	99.0%	99.0%
<i>State Subtotal</i>	<i>478.0</i>	<i>466.2</i>	<i>451.1</i>	<i>94.4%</i>	<i>94.4%</i>

Contract Secure/Staff Supervised

Alternative Homes For Youth - Greeley	8.2	10.2
Betty K. Marler Center	41.0	40.5
Brown Center	0.3	0.1
Childrens Ark	7.3	6.7
Devereux Cleo Wallace	18.4	17.4
El Pueblo Ranch	2.2	2.1
Gateway Residential Program	2.5	2.5
Griffith Center, Grand Ave Girls (WR)	0.0	0.8
Hand Up Homes for Youth - West	3.7	3.1
Hilltop (Residential Youth Services)	8.8	9.4
Jefferson Hills	18.0	28.5
Jefferson Hills Aurora	38.6	37.3
Mountain Star Center	3.0	3.6
Ridge View	402.2	400.8
Robert DeNier	15.0	14.3
Southern Peaks	23.9	21.2
Third Way Center - Lowry	3.8	2.7
Youth Villages	1.0	1.0
<i>Contract Secure Subtotal</i>	<i>597.7</i>	<i>602.1</i>

**State Secure Commitment
Percent of Available Capacity by Facility**



February 2009

DYC Population Report

III. Commitment Services Continued

B. Community/Other Residential APD by Facility, ADP by Region

<u>Facility</u>	<u>February</u> <u>2009</u>	<u>YTD</u>
Community		
Ariel Clinical Services	1.0	0.8
Boulder Community Treatment Center	2.0	1.1
Dale House Project	9.7	11.0
Daybreak & Daybreak Princeton	3.0	3.9
Denver Area Youth Services (DAYS)	4.0	4.2
Gateway Youth and Family Services	0.0	2.1
Griffith Centers (SR)	1.4	3.8
Job Corps	3.5	2.7
Kidz Ark New Raymer Ranch	1.0	1.4
Kidz Ark Sterling	1.0	1.7
Lost and Found Inc., Arvada	10.3	8.4
Lost and Found Inc., Morrison	1.0	2.1
Marilee Center	0.0	1.1
Mesa County Community Corrections	6.0	5.9
Mt Evans Qualifying House	13.1	11.3
Reflections For Youth Inc., Grismore	1.0	0.2
Reflections For Youth Inc., Prairie View	1.4	2.1
Reflections For Youth Inc., Wilderness	0.0	0.8
ROP-Canyon State Academy	1.0	0.6
Southwest Colorado Community Corrections	0.2	0.7
Summit Treatment Service, Inc	15.5	15.4
Synergy Administration	8.9	5.3
Third Way Center	4.0	2.4
Third Way Center, Pontiac	3.7	5.0
Third Way Center, York	3.8	2.8
Third Way Center, Lincoln	4.9	4.6
Turning Point Center (Boys Residential)	7.4	10.2
Turning Point, Mathews St.	7.9	7.7
Youthtrack, Jeffco	3.3	2.9
Youthtrack, San Luis Valley	5.6	3.0
Youthtrack, Work and Learn	10.9	10.4
Youth Ventures	9.7	9.0
<i>Community Subtotal</i>	<i>146.0</i>	<i>144.5</i>
<i>Private Contract Total</i>	<i>743.7</i>	<i>746.6</i>
<i>Other Residential*</i>	<i>20.4</i>	<i>24.3</i>
RESIDENTIAL TOTAL	1,230.3	1,222.0

ADP by Region

<u>Region</u>	<u>February</u>	<u>YTD</u>
Central	537.0	519.5
Northeast	317.5	332.3
Southern	254.9	254.0
Western	120.8	116.2
Total	1,230.3	1,222.0

*Includes Group Homes, Job Corps, Hospitals, Mental Health Institutes, Shelter Care, etc.

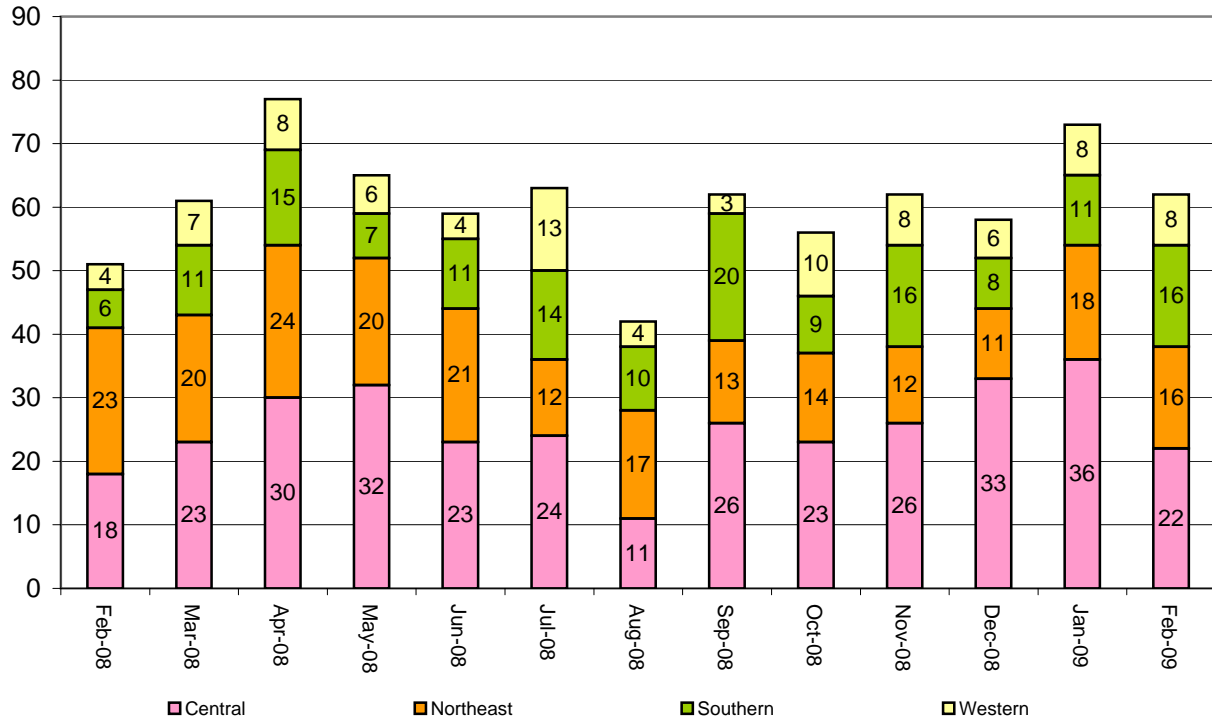
February 2009 DYC Population Report

IV. New Commitments

New Commitments by Region

	<u>February 2009</u>	<u>YTD</u>	<u>February 2008</u>	<u>Last YTD</u>
Central Region	22	212	18	200
Northeast Region	16	113	23	156
Southern Region	16	106	6	101
Western Region	8	63	4	51
New Commitment Total	62	494	51	508

Monthly New Commitments



February 2009 DYC Population Report

V. Parole Services

Parole ADP by Region

	<u>February 2009</u>	<u>YTD</u>	<u>Last YTD</u>
Central Region	164.2	185.4	219.3
Northeast Region	122.2	128.2	142.5
Southern Region	82.1	94.7	106.5
Western Region	47.0	45.3	53.0
Parole Total	415.5	453.7	521.2

Parole Intakes Parole Discharges Parole LOS

	<u>February 2009</u>	<u>YTD</u>	<u>February 2009</u>	<u>YTD</u>	<u>YTD</u>
Central Region	19	202	26	247	6.9
Northeast Region	11	143	17	163	6.3
Southern Region	12	101	21	129	6.5
Western Region	2	54	8	53	6.6
Parole Total	44	500	72	592	6.6

Monthly Parole ADP

