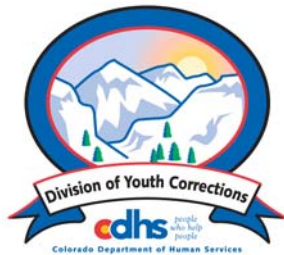


JANUARY 2009 MONTHLY POPULATION REPORT

Prepared by the Division of Youth Corrections Research and Evaluation Unit February 24, 2009



Colorado Department of Human Services
Division of Youth Corrections

Working with Colorado Communities to Achieve Justice

January 2009

DYC Population Report

I.	Summary Population Data	1
II.	Detention ADP by Facility	2
III.	Commitment Services	
	A. State and Contract Secure ADP by Facility	3
	B. Community/Other Residential ADP by Facility	4
IV.	New Commitments	5
V.	Parole Services	6

January 2009 DYC Population Report

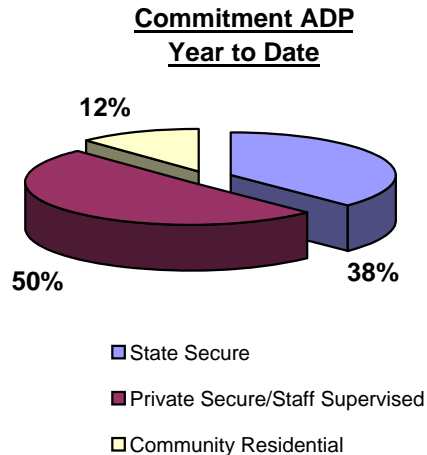
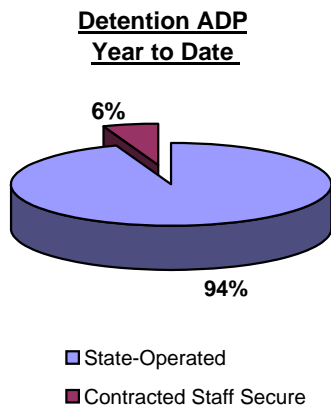
I. Summary Population Data*

DETAINED YOUTH	Average Daily Population (ADP)		Length of Stay (LOS)
	January 2009	YTD	YTD
State-Operated	381.2	377.2	14.1 days
Contracted Staff Secure	19.7	22.0	14.0 days
Total Detained	401.0	399.2	14.1 days

COMMITTED YOUTH	Average Daily Population (ADP)		Length of Stay (LOS)
	January 2009	YTD	YTD
State Secure	458.3	449.2	
Private Secure/Staff Supervised	582.3	602.8	
Community Residential	149.1	144.4	
Other Residential**	21.4	24.6	
Total Committed Residential	1,211.1	1,221.0	18.9 months
<i>Committed Residential w/o Boulder</i>	<i>1,204.1</i>	<i>1,215.0</i>	

PAROLED YOUTH	Average Daily Population (ADP)		Length of Stay (LOS)
	January 2009	YTD	YTD
Total Paroled	434.3	460.3	6.7 months

TOTAL STATEWIDE ADP	2,046.4	2,080.5
----------------------------	----------------	----------------



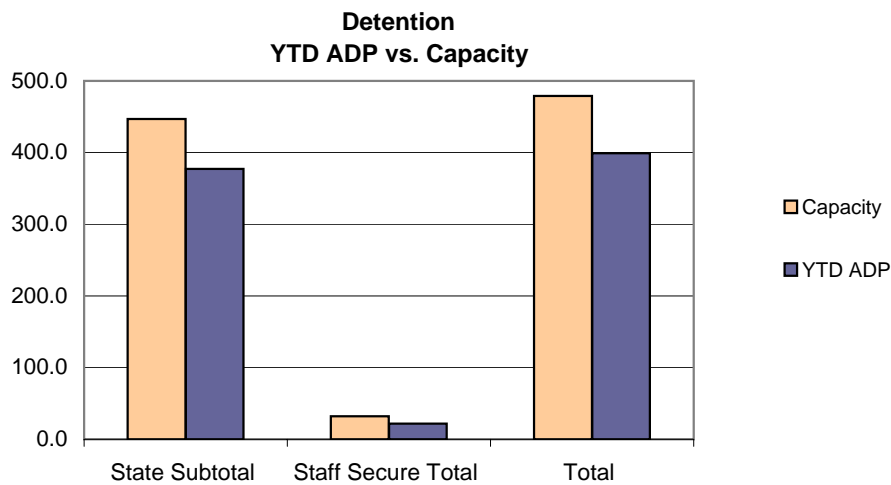
*Due to rounding, totals shown may not be an exact sum of the subtotals

**Includes Group Homes, Job Corps, Hospitals, Mental Health Institutes, Shelter Care, etc.

January 2009 DYC Population Report

II. Detention Program Services Detention Data by Facility

Facility	Operating Capacity	Average Daily Population			New Admissions		YTD LOS in Days
		January 2009	YTD	YTD % of Capacity	January 2009	YTD	LOS
<i>State Operated Detention</i>							
Adams	29	22.8	25.4	87.5%	63	469	11.5
Gilliam	73	70.4	65.8	90.1%	115	721	19.6
Grand Mesa	24	21.2	19.6	81.6%	36	308	11.9
Marvin Foote	92	81.9	80.6	87.7%	153	1,066	16.2
Mount View	60	49.6	48.1	80.2%	82	614	16.0
Platte Valley	69	65.9	62.4	90.4%	155	1,019	12.7
Pueblo	42	29.7	30.0	71.5%	80	579	11.0
Spring Creek	58	39.8	45.2	78.0%	117	839	11.3
<i>State Subtotal</i>	<i>447</i>	<i>381.2</i>	<i>377.2</i>	<i>84.4%</i>	<i>801</i>	<i>5,615</i>	<i>14.1</i>
<i>Staff Secure Detention</i>							
Brown Center	2	1.4	1.6	78.6%	2	21	17.0
Hilltop	7	3.9	4.0	56.8%	14	59	14.4
Midway (Remington)	8	5.7	4.7	59.0%	19	113	9.2
Robert DeNier	9	5.3	8.6	95.4%	17	106	17.9
Youthtrack San Luis Valley	6	3.5	3.2	52.9%	5	48	14.2
<i>Staff Secure Total</i>	<i>32</i>	<i>19.7</i>	<i>22.0</i>	<i>68.8%</i>	<i>57</i>	<i>347</i>	<i>14.0</i>
TOTAL	479	401.0	399.2	83.3%	858	5,962	14.1



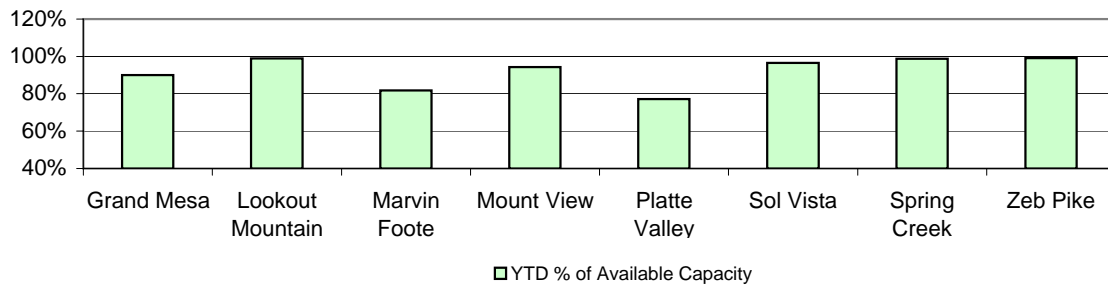
January 2009 DYC Population Report

III. Commitment Services

A. State and Contract Secure ADP by Facility

Facility	<u>Operational Capacity</u> (YTD)	<u>January 2009</u>	<u>YTD</u>	<u>YTD % of</u> <u>Operational</u> <u>Capacity</u>	<u>YTD % of Current</u> <u>Available Capacity</u>
State Secure					
Adams	0	1.4	0.8	N/A	N/A
Gilliam	0	0.3	0.6	N/A	N/A
Grand Mesa	44	45.8	39.6	90.0%	90.0%
Lookout	168	167.6	166.3	99.0%	99.0%
Marvin Foote	22	17.9	18.0	81.7%	81.7%
Mount View	73	76.5	68.9	94.4%	94.4%
Platte Valley	66	49.5	51.0	77.2%	77.2%
Pueblo	0	0.1	0.6	N/A	N/A
Sol Vista	20	20.0	19.3	96.6%	96.6%
Spring Creek	45	39.5	44.5	98.8%	98.8%
Zeb Pike	40	39.9	39.7	99.2%	99.2%
<i>State Subtotal</i>	<i>478.0</i>	<i>458.3</i>	<i>449.2</i>	<i>94.0%</i>	<i>94.0%</i>
Contract Secure/Staff Supervised					
Alternative Homes For Youth - Greeley		9.8	10.5		
Betty K. Marler Center		40.4	40.5		
Brown Center		0.0	0.1		
Childrens Ark		7.6	6.7		
Devereux Cleo Wallace		16.3	17.2		
El Pueblo Ranch		1.1	2.1		
Gateway Residential Program		3.1	2.5		
Griffith Center, Grand Ave Girls (WR)		0.0	0.9		
Hand Up Homes for Youth - West		4.0	3.0		
Hilltop (Residential Youth Services)		7.7	9.5		
Jefferson Hills		16.5	29.8		
Jefferson Hills Aurora		40.1	37.2		
Mountain Star Center		3.0	3.6		
Ridge View		390.0	400.6		
Robert DeNier		15.0	14.2		
Southern Peaks		24.5	20.9		
Third Way Center - Lowry		2.2	2.6		
Youth Villages		1.0	1.0		
<i>Contract Secure Subtotal</i>		<i>582.3</i>	<i>602.8</i>		

**State Secure Commitment
Percent of Available Capacity by Facility**



January 2009

DYC Population Report

III. Commitment Services Continued

B. Community/Other Residential APD by Facility, ADP by Region

<u>Facility</u>	<u>January</u> <u>2009</u>	<u>YTD</u>
Community		
Ariel Clinical Services	1.0	0.7
Boulder Community Treatment Center	2.0	1.0
Dale House Project	12.4	11.2
Daybreak & Daybreak Princeton	2.9	4.0
Denver Area Youth Services (DAYS)	4.0	4.3
Gateway Youth and Family Services	0.7	2.3
Griffith Centers (SR)	2.0	4.2
Job Corps	2.3	2.6
Kidz Ark New Raymer Ranch	1.2	1.5
Kidz Ark Sterling	1.0	1.8
Lost and Found Inc., Arvada	9.2	8.1
Lost and Found Inc., Morrison	1.3	2.2
Marilee Center	0.0	1.2
Mesa County Community Corrections	6.4	6.0
Mt Evans Qualifying House	13.3	11.1
Reflections For Youth Inc., Grismore	0.8	0.1
Reflections For Youth Inc., Prairie View	2.0	2.2
Reflections For Youth Inc., Wilderness	0.2	0.9
ROP-Canyon State Academy	1.0	0.6
Southwest Colorado Community Corrections	0.0	0.7
Summit Treatment Service, Inc	14.9	15.4
Synergy Administration	7.5	4.8
Third Way Center	3.5	2.2
Third Way Center, Pontiac	4.0	5.2
Third Way Center, York	3.8	2.7
Third Way Center, Lincoln	5.4	4.6
Turning Point Center (Boys Residential)	10.3	10.5
Turning Point, Mathews St.	8.0	7.7
Youthtrack, Jeffco	3.8	2.9
Youthtrack, San Luis Valley	4.1	2.7
Youthtrack, Work and Learn	11.0	10.4
Youth Ventures	8.9	9.0
<i>Community Subtotal</i>	<i>149.1</i>	<i>144.4</i>
<i>Private Contract Total</i>	<i>731.4</i>	<i>747.1</i>
<i>Other Residential*</i>	<i>21.4</i>	<i>24.6</i>
RESIDENTIAL TOTAL	1,211.1	1,221.0

ADP by Region

<u>Region</u>	<u>January</u>	<u>YTD</u>
Central	527.0	516.9
Northeast	313.7	334.2
Southern	255.4	253.2
Western	115.0	116.6
Total	1,211.1	1,221.0

*Includes Group Homes, Job Corps, Hospitals, Mental Health Institutes, Shelter Care, etc.

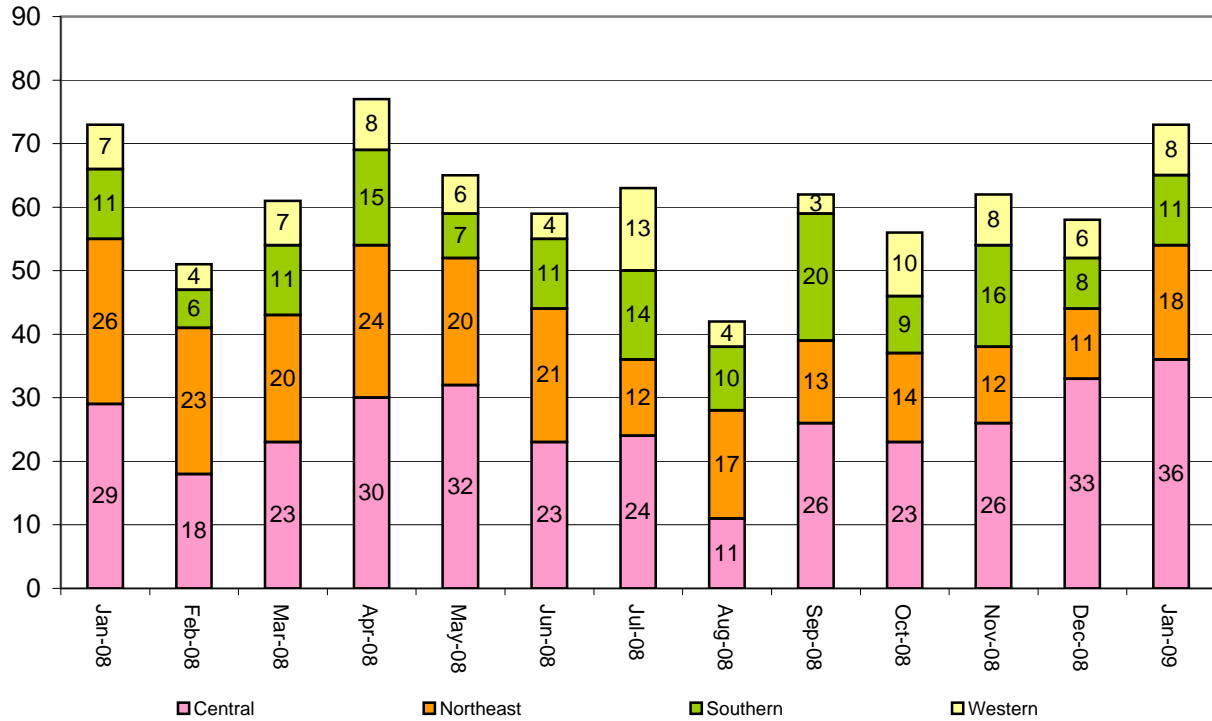
January 2009 DYC Population Report

IV. New Commitments

New Commitments by Region

	<u>January 2009</u>	<u>YTD</u>	<u>January 2008</u>	<u>Last YTD</u>
Central Region	36	190	29	181
Northeast Region	18	97	26	132
Southern Region	11	90	11	95
Western Region	8	55	7	47
New Commitment Total	73	432	73	455

Monthly New Commitments



January 2009 DYC Population Report

V. Parole Services

Parole ADP by Region

	<u>January 2009</u>	<u>YTD</u>	<u>Last YTD</u>
Central Region	169.4	189.5	218.6
Northeast Region	129.8	128.0	142.9
Southern Region	88.2	97.8	104.7
Western Region	46.9	45.0	54.2
Parole Total	434.3	460.3	520.4

Parole Intakes

Parole Discharges

Parole LOS

	<u>January 2009</u>	<u>YTD</u>	<u>January 2009</u>	<u>YTD</u>	<u>YTD</u>
Central Region	26	181	23	208	7.0
Northeast Region	15	132	18	138	6.2
Southern Region	6	89	10	105	6.6
Western Region	4	52	7	45	7.0
Parole Total	51	454	58	496	6.7

Monthly Parole ADP

