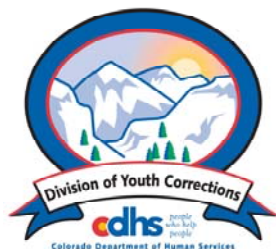


DECEMBER 2008 MONTHLY POPULATION REPORT

Prepared by the Division of Youth Corrections Research and Evaluation Unit January 20, 2009



Colorado Department of Human Services
Division of Youth Corrections

Working with Colorado Communities to Achieve Justice

December 2008

DYC Population Report

I.	Summary Population Data	1
II.	Detention ADP by Facility	2
III.	Commitment Services	
	A. State and Contract Secure ADP by Facility	3
	B. Community/Other Residential ADP by Facility	4
IV.	New Commitments	5
V.	Parole Services	6

December 2008 DYC Population Report

I. Summary Population Data*

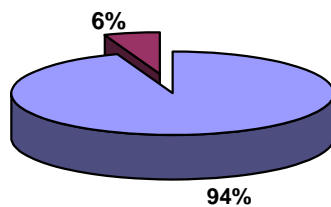
DETAINED YOUTH	Average Daily Population (ADP)		Length of Stay (LOS)
	December 2008	YTD	YTD
State-Operated	374.9	377.0	13.9 days
Contracted Staff Secure	19.9	22.5	14.1 days
Total Detained	394.8	399.5	14.0 days

COMMITTED YOUTH	Average Daily Population (ADP)		Length of Stay (LOS)
	December 2008	YTD	YTD
State Secure	447.3	447.2	
Private Secure/Staff Supervised	594.2	607.6	
Community Residential	141.3	142.6	
Other Residential**	24.5	25.0	
Total Committed Residential	1,207.3	1,222.5	19.0 months
<i>Committed Residential w/o Boulder</i>	<i>1,201.8</i>	<i>1,216.6</i>	

PAROLED YOUTH	Average Daily Population (ADP)		Length of Stay (LOS)
	December 2008	YTD	YTD
Total Paroled	442.3	461.6	6.8 months

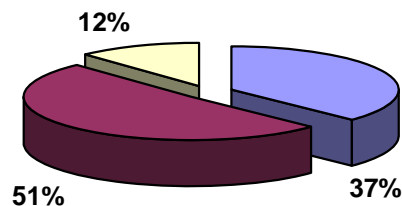
TOTAL STATEWIDE ADP	December 2008	YTD
	2,044.4	2,083.7

**Detention ADP
Year to Date**



■ State-Operated
■ Contracted Staff Secure

**Commitment ADP
Year to Date**



■ State Secure
■ Private Secure/Staff Supervised
■ Community Residential

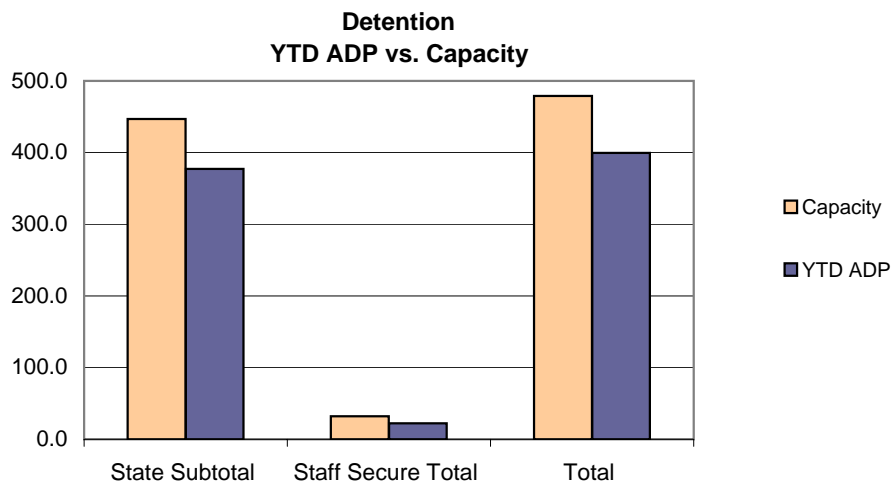
*Due to rounding, totals shown may not be an exact sum of the subtotals

**Includes Group Homes, Job Corps, Hospitals, Mental Health Institutes, Shelter Care, etc.

December 2008 DYC Population Report

II. Detention Program Services Detention Data by Facility

Facility	Average Daily Population				New Admissions		YTD LOS in Days
	Operating Capacity	December 2008	YTD	YTD % of Capacity	December 2008	YTD	LOS
<i>State Operated Detention</i>							
Adams	29	23.8	26.2	90.2%	70	408	11.8
Gilliam	73	66.7	65.0	89.1%	97	606	19.3
Grand Mesa	24	18.3	19.3	80.4%	40	272	11.8
Marvin Foote	92	81.9	80.6	87.6%	160	913	15.9
Mount View	60	51.0	47.9	79.8%	89	531	15.8
Platte Valley	69	63.7	61.8	89.6%	142	865	12.4
Pueblo	42	28.8	30.1	71.7%	90	500	11.4
Spring Creek	58	40.5	46.2	79.6%	109	722	11.3
<i>State Subtotal</i>	<i>447</i>	<i>374.9</i>	<i>377.0</i>	<i>84.3%</i>	<i>797</i>	<i>4,817</i>	<i>13.9</i>
<i>Staff Secure Detention</i>							
Brown Center	2	1.6	1.6	79.9%	4	19	15.6
Hilltop	7	3.1	4.0	57.1%	3	45	14.7
Midway (Remington)	8	5.7	4.6	56.9%	22	94	8.8
Robert DeNier	9	7.9	9.2	102.4%	9	89	19.1
Youthtrack San Luis Valley	6	1.5	3.1	51.9%	5	43	13.7
<i>Staff Secure Total</i>	<i>32</i>	<i>19.9</i>	<i>22.5</i>	<i>70.3%</i>	<i>43</i>	<i>290</i>	<i>14.1</i>
TOTAL	479	394.8	399.5	83.4%	840	5,107	14.0



December 2008 DYC Population Report

III. Commitment Services

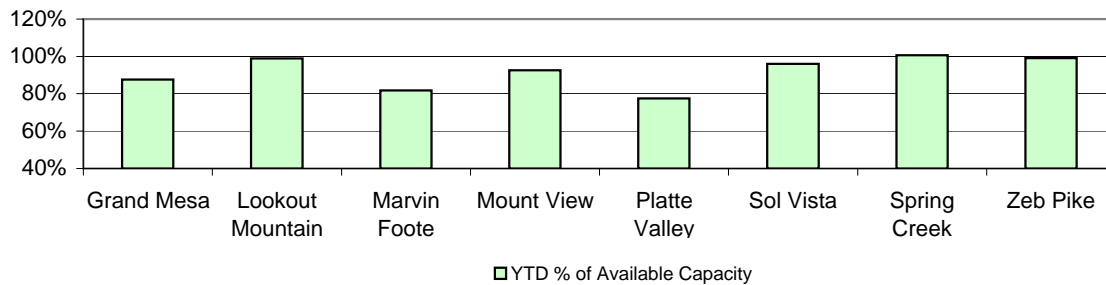
A. State and Contract Secure ADP by Facility

<u>Facility</u>	<u>Operational Capacity (YTD)</u>	<u>December 2008</u>	<u>YTD</u>	<u>YTD % of Operational Capacity</u>	<u>YTD % of Current Available Capacity</u>
State Secure					
Adams	0	0.3	0.3	N/A	N/A
Gilliam	0	0.3	0.7	N/A	N/A
Grand Mesa	44	41.6	38.6	87.7%	87.7%
Lookout	168	166.8	166.1	98.9%	98.9%
Marvin Foote	22	14.1	18.0	81.7%	81.7%
Mount View	73	73.5	67.6	92.6%	92.6%
Platte Valley	66	49.2	51.2	77.6%	77.6%
Pueblo	0	0.2	0.7	N/A	N/A
Sol Vista	20	19.7	19.2	96.0%	96.0%
Spring Creek	45	41.8	45.3	100.6%	100.6%
Zeb Pike	40	39.8	39.6	99.1%	99.1%
<i>State Subtotal</i>	<i>478.0</i>	<i>447.3</i>	<i>447.2</i>	<i>93.6%</i>	<i>93.6%</i>

Contract Secure/Staff Supervised

Alternative Homes For Youth - Greeley		11.1	10.6
Betty K. Marler Center		39.6	40.5
Brown Center		0.0	0.1
Childrens Ark		7.0	6.5
Devereux Cleo Wallace		16.5	17.4
El Pueblo Ranch		1.0	2.2
Gateway Residential Program		3.6	3.3
Griffith Center, Grand Ave Girls (WR)		0.0	1.1
Hand Up Homes for Youth - West		4.0	3.0
Hilltop (Residential Youth Services)		6.8	9.8
Jefferson Hills		18.1	32.1
Jefferson Hills Aurora		38.3	36.7
Mountain Star Center		3.0	3.7
Ridge View		403.0	402.7
Robert DeNier		14.5	14.1
Southern Peaks		22.6	20.3
Third Way Center - Lowry		4.1	2.6
Youth Villages		1.0	1.0
<i>Contract Secure Subtotal</i>		<i>594.2</i>	<i>607.6</i>

**State Secure Commitment
Percent of Available Capacity by Facility**



December 2008

DYC Population Report

III. Commitment Services Continued

B. Community/Other Residential APD by Facility, ADP by Region

<u>Facility</u>	<u>December</u> <u>2008</u>	<u>YTD</u>
Community		
Ariel Clinical Services	1.0	0.7
Boulder Community Treatment Center	1.1	0.8
Dale House Project	12.2	11.0
Daybreak & Daybreak Princeton	4.1	4.1
Denver Area Youth Services (DAYS)	3.1	4.3
Gateway Youth and Family Services	1.0	1.7
Griffith Centers (SR)	2.5	4.5
Job Corps	3.7	2.7
Kidz Ark New Raymer Ranch	2.0	1.5
Kidz Ark Sterling	1.0	2.0
Lost and Found Inc., Arvada	6.8	7.9
Lost and Found Inc., Morrison	2.3	2.4
Marilee Center	0.6	1.4
Mesa County Community Corrections	6.2	5.9
Mt Evans Qualifying House	12.4	10.7
Reflections For Youth Inc., Prairie View	2.3	2.2
Reflections For Youth Inc., Wilderness	1.0	1.0
ROP-Canyon State Academy	1.0	0.5
Southwest Colorado Community Corrections	0.0	0.8
Summit Treatment Service, Inc	14.7	15.5
Synergy Administration	5.1	4.3
Third Way Center	2.9	1.9
Third Way Center, Pontiac	4.9	5.4
Third Way Center, York	3.7	2.5
Third Way Center, Lincoln	3.9	4.4
Turning Point Center (Boys Residential)	9.0	10.6
Turning Point, Mathews St.	7.9	7.7
Youthtrack, Jeffco	3.9	2.7
Youthtrack, San Luis Valley	3.4	2.4
Youthtrack, Work and Learn	10.7	10.3
Youth Ventures	7.2	9.0
<i>Community Subtotal</i>	<i>141.3</i>	<i>142.6</i>
<i>Private Contract Total</i>	<i>735.5</i>	<i>750.2</i>
<i>Other Residential*</i>	<i>24.5</i>	<i>25.0</i>
RESIDENTIAL TOTAL	1,207.3	1,222.5

ADP by Region

<u>Region</u>	<u>December</u>	<u>YTD</u>
Central	522.1	516.3
Northeast	322.3	338.5
Southern	248.5	250.6
Western	114.5	117.1
Total	1,207.3	1,222.5

*Includes Group Homes, Job Corps, Hospitals, Mental Health Institutes, Shelter Care, etc.

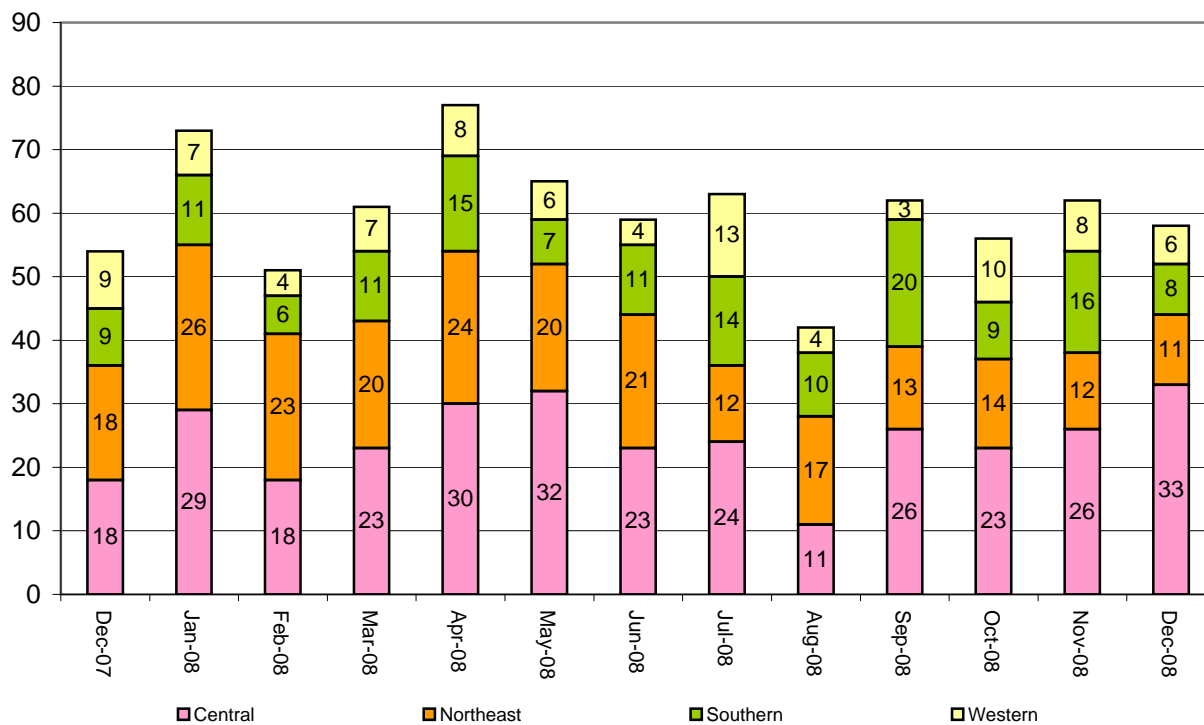
December 2008 DYC Population Report

IV. New Commitments

New Commitments by Region

	<u>December 2008</u>	<u>YTD</u>	<u>December 2007</u>	<u>Last YTD</u>
Central Region	33	153	18	152
Northeast Region	11	79	18	105
Southern Region	8	78	9	83
Western Region	6	44	9	40
New Commitment Total	58	354	54	380

Monthly New Commitments



December 2008 DYC Population Report

V. Parole Services

Parole ADP by Region

	<u>December 2008</u>	<u>YTD</u>	<u>Last YTD</u>
Central Region	177.6	191.7	215.4
Northeast Region	124.5	126.9	142.6
Southern Region	89.4	98.4	102.6
Western Region	50.8	44.7	55.4
Parole Total	442.3	461.6	516.0

Parole Intakes Parole Discharges Parole LOS

	<u>December 2008</u>		<u>YTD</u>		<u>YTD</u>
Central Region	22	153	30	158	7.2
Northeast Region	29	117	15	96	6.3
Southern Region	12	83	13	87	6.6
Western Region	9	48	7	35	7.0
Parole Total	72	401	65	376	6.8

Monthly Parole ADP

