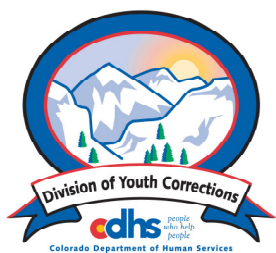


# NOVEMBER 2008 MONTHLY POPULATION REPORT

---

Prepared by the Division of Youth Corrections Research and Evaluation Unit December 22, 2008



**Colorado Department of Human Services**  
**Division of Youth Corrections**

---

Working with Colorado Communities to Achieve Justice

# November 2008

## DYC Population Report

<b>I.</b>	<b>Summary Population Data</b>	<b>1</b>
<b>II.</b>	<b>Detention ADP by Facility</b>	<b>2</b>
<b>III.</b>	<b>Commitment Services</b>	
	A. State and Contract Secure ADP by Facility	<b>3</b>
	B. Community/Other Residential ADP by Facility	<b>4</b>
<b>IV.</b>	<b>New Commitments</b>	<b>5</b>
<b>V.</b>	<b>Parole Services</b>	<b>6</b>

# November 2008 DYC Population Report

## I. Summary Population Data\*

<b>DETAINED YOUTH</b>	<b>Average Daily Population (ADP)</b>		<b>Length of Stay (LOS)</b>
	<b>November 2008</b>	<b>YTD</b>	<b>YTD</b>
State-Operated	388.4	377.5	14.0 days
Contracted Staff Secure	26.5	22.8	13.0 days
<b>Total Detained</b>	<b>414.9</b>	<b>400.3</b>	<b>13.9 days</b>

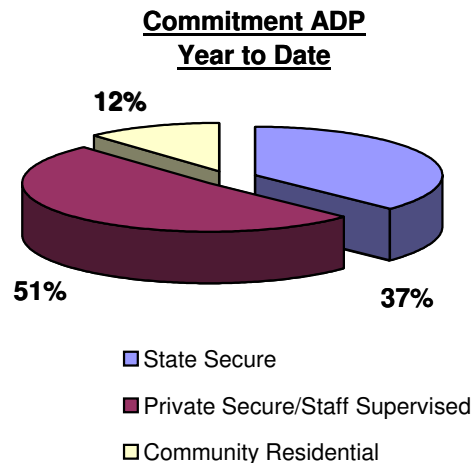
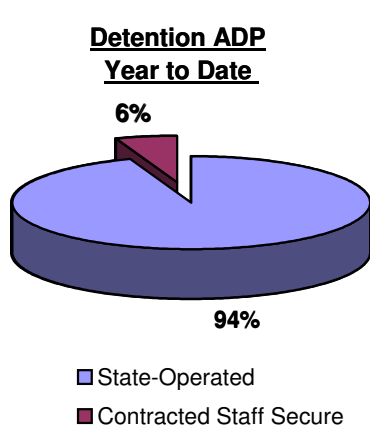
<b>COMMITTED YOUTH</b>	<b>Average Daily Population (ADP)</b>		<b>Length of Stay (LOS)</b>
	<b>November 2008</b>	<b>YTD</b>	<b>YTD</b>
State Secure	450.4	447.3	
Private Secure/Staff Supervised	609.8	612.3	
Community Residential	135.2	140.5	
Other Residential**	24.5	25.0	
<b>Total Committed Residential</b>	<b>1,219.9</b>	<b>1,225.1</b>	<b>19.0 months</b>
<i>Committed Residential w/o Boulder</i>	<i>1,214.3</i>	<i>1,219.2</i>	

<b>PAROLED YOUTH</b>	<b>Average Daily Population (ADP)</b>		<b>Length of Stay (LOS)</b>
	<b>November 2008</b>	<b>YTD</b>	<b>YTD</b>
Total Paroled	464.0	464.4	6.7 months

<b>TOTAL STATEWIDE ADP</b>	<b>2,098.8</b>	<b>2,089.9</b>	
----------------------------	----------------	----------------	--



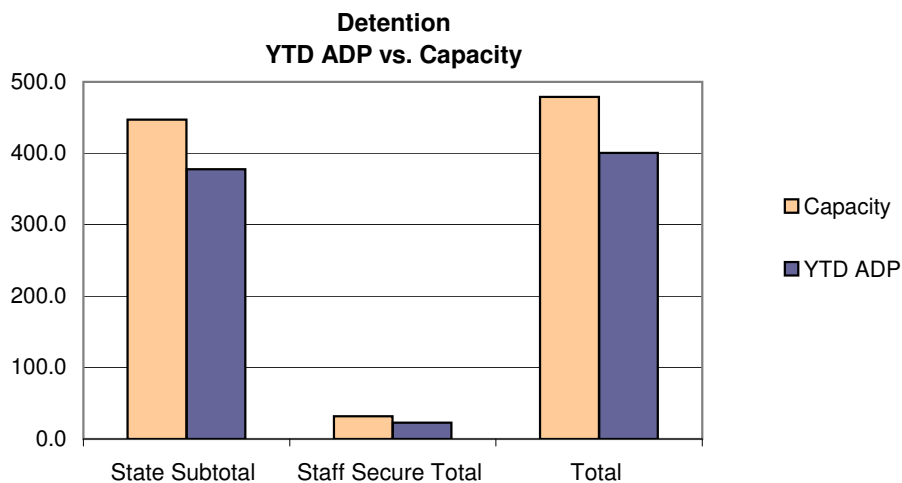
\*Due to rounding, totals shown may not be an exact sum of the subtotals

\*\*Includes Group Homes, Job Corps, Hospitals, Mental Health Institutes, Shelter Care, etc.

# November 2008 DYC Population Report

## III. Detention Program Services Continued D. Detention Data by Facility

Facility	Average Daily Population				New Admissions		YTD LOS in Days
	Operating Capacity	November 2008	YTD	YTD % of Capacity	November 2008	YTD	LOS
<i>State Operated Detention</i>							
Adams	29	26.6	26.6	91.8%	76	338	12.0
Gilliam	73	68.9	64.7	88.6%	117	509	19.3
Grand Mesa	24	19.4	19.5	81.2%	53	232	11.4
Marvin Foote	92	82.4	80.3	87.3%	155	753	16.0
Mount View	60	51.1	47.2	78.7%	82	442	16.0
Platte Valley	69	66.0	61.5	89.1%	122	723	12.0
Pueblo	42	26.0	30.4	72.3%	82	410	11.9
Spring Creek	58	48.0	47.4	81.7%	128	613	11.3
<i>State Subtotal</i>	<i>447</i>	<i>388.4</i>	<i>377.5</i>	<i>84.5%</i>	<i>815</i>	<i>4,020</i>	<i>14.0</i>
<i>Staff Secure Detention</i>							
Brown Center	2	2.0	1.6	79.5%	1	15	14.4
Hilltop	7	5.4	4.2	59.6%	6	42	12.3
Midway (Remington)	8	5.9	4.3	54.1%	20	72	9.5
Robert DeNier	9	10.0	9.3	103.0%	13	79	16.8
Youthtrack San Luis Valley	6	3.2	3.4	57.3%	3	38	11.7
<i>Staff Secure Total</i>	<i>32</i>	<i>26.5</i>	<i>22.8</i>	<i>71.2%</i>	<i>43</i>	<i>246</i>	<i>13.0</i>
<b>TOTAL</b>	<b>479</b>	<b>414.9</b>	<b>400.3</b>	<b>83.6%</b>	<b>858</b>	<b>4,266</b>	<b>13.9</b>



# November 2008 DYC Population Report

## IV. Commitment Services

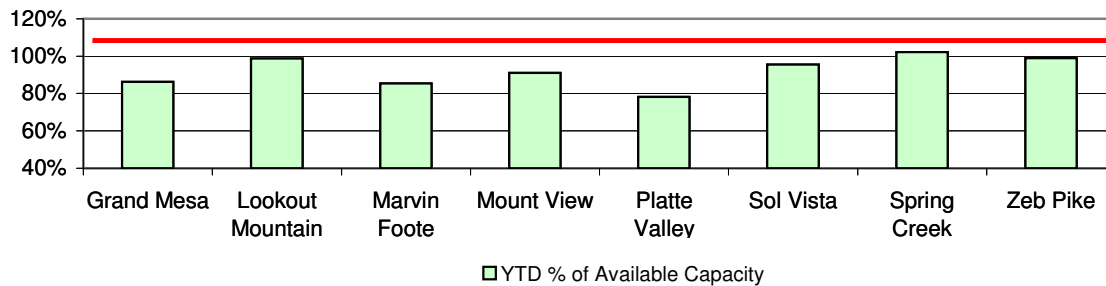
### A. State and Contract Secure ADP by Facility

<u>Facility</u>	<u>Operational Capacity (YTD)</u>	<u>November 2008</u>	<u>YTD</u>	<u>YTD % of Operational Capacity</u>	<u>YTD % of Current Available Capacity</u>
<b>State Secure</b>					
Adams	0	0.1	0.4	N/A	N/A
Gilliam	0	0.3	0.7	N/A	N/A
Grand Mesa	44	42.0	38.0	86.3%	86.3%
Lookout	168	168.1	165.9	98.8%	98.8%
Marvin Foote	22	20.4	18.8	85.3%	85.3%
Mount View	73	71.0	66.4	91.0%	91.0%
Platte Valley	66	46.0	51.6	78.2%	78.2%
Pueblo	0	0.2	0.8	N/A	N/A
Sol Vista	20	19.6	19.1	95.5%	95.5%
Spring Creek	45	43.1	46.0	102.2%	102.2%
Zeb Pike	40	39.7	39.6	99.0%	99.0%
<i>State Subtotal</i>	<i>478.0</i>	<i>450.4</i>	<i>447.3</i>	<i>93.6%</i>	<i>93.6%</i>

### Contract Secure/Staff Supervised

Alternative Homes For Youth - Greeley	11.3	10.5	
Betty K. Marler Center	40.9	40.7	
Brown Center	0.0	0.1	
Childrens Ark	5.2	6.4	
Devereux Cleo Wallace	15.5	17.5	
El Pueblo Ranch	1.7	2.5	
Gateway Residential Program	4.1	3.2	
Griffith Center, Grand Ave Girls (WR)	0.0	1.3	
Hand Up Homes for Youth - West	3.3	2.8	
Hilltop (Residential Youth Services)	6.5	10.4	
Jefferson Hills	25.6	34.9	
Jefferson Hills Aurora	37.8	36.3	
Kidz Ark Sterling	1.0	2.2	
Mountain Star Center	4.0	3.9	
Ridge View	409.4	402.5	
Robert DeNier	14.5	14.0	
Southern Peaks	24.0	19.8	
Third Way Center - Lowry	4.2	2.3	
Youth Villages	1.0	1.0	
<i>Contract Secure Subtotal</i>	<i>609.8</i>	<i>612.3</i>	

**State Secure Commitment  
Percent of Available Capacity by Facility**



# November 2008

## DYC Population Report

### IV. Commitment Services Continued

#### B. Community/Other Residential APD by Facility, ADP by Region

<u>Facility</u>	<u>November</u> <u>2008</u>	<u>YTD</u>
<b>Community</b>		
Ariel Clinical Services	1.0	0.6
Boulder Community Treatment Center	0.6	0.7
Dale House Project	10.9	10.8
Daybreak & Daybreak Princeton	4.0	4.2
Denver Area Youth Services (DAYS)	3.5	4.6
Gateway Youth and Family Services	1.0	1.8
Griffith Centers (SR)	3.7	4.9
Job Corps	4.0	2.4
Kidz Ark New Raymer Ranch	2.0	1.4
Lost and Found Inc., Arvada	7.2	8.1
Lost and Found Inc., Morrison	2.4	2.4
Marilee Center	1.0	1.6
Mesa County Community Corrections	6.7	5.8
Mt Evans Qualifying House	9.8	10.3
Reflections For Youth Inc., Prairie View	3.0	2.1
Reflections For Youth Inc., Wilderness	1.0	1.0
ROP-Canyon State Academy	1.0	0.4
Southwest Colorado Community Corrections	1.0	1.0
Summit Treatment Service, Inc	14.6	15.6
Synergy Administration	3.9	4.2
Third Way Center	2.0	1.7
Third Way Center, Pontiac	5.0	5.5
Third Way Center, York	2.0	2.3
Third Way Center, Lincoln	4.7	4.5
Turning Point Center (Boys Residential)	8.3	10.9
Turning Point, Mathews St.	7.8	7.6
Youthtrack, Jeffco	2.0	2.4
Youthtrack, San Luis Valley	3.4	2.4
Youthtrack, Work and Learn	10.6	10.2
Youth Ventures	7.4	9.0
<i>Community Subtotal</i>	<i>135.2</i>	<i>140.5</i>
<i>Private Contract Total</i>	<i>745.0</i>	<i>752.8</i>
<i>Other Residential*</i>	<i>24.5</i>	<i>25.0</i>
<b>RESIDENTIAL TOTAL</b>	<b>1,219.9</b>	<b>1,225.1</b>

#### ADP by Region

<u>Region</u>	<u>November</u>	<u>YTD</u>
Central	520.1	513.2
Northeast	330.2	341.8
Southern	253.0	251.6
Western	116.7	118.5
Total	1,219.9	1,225.1

\*Includes Group Homes, Job Corps, Hospitals, Mental Health Institutes, Shelter Care, etc.

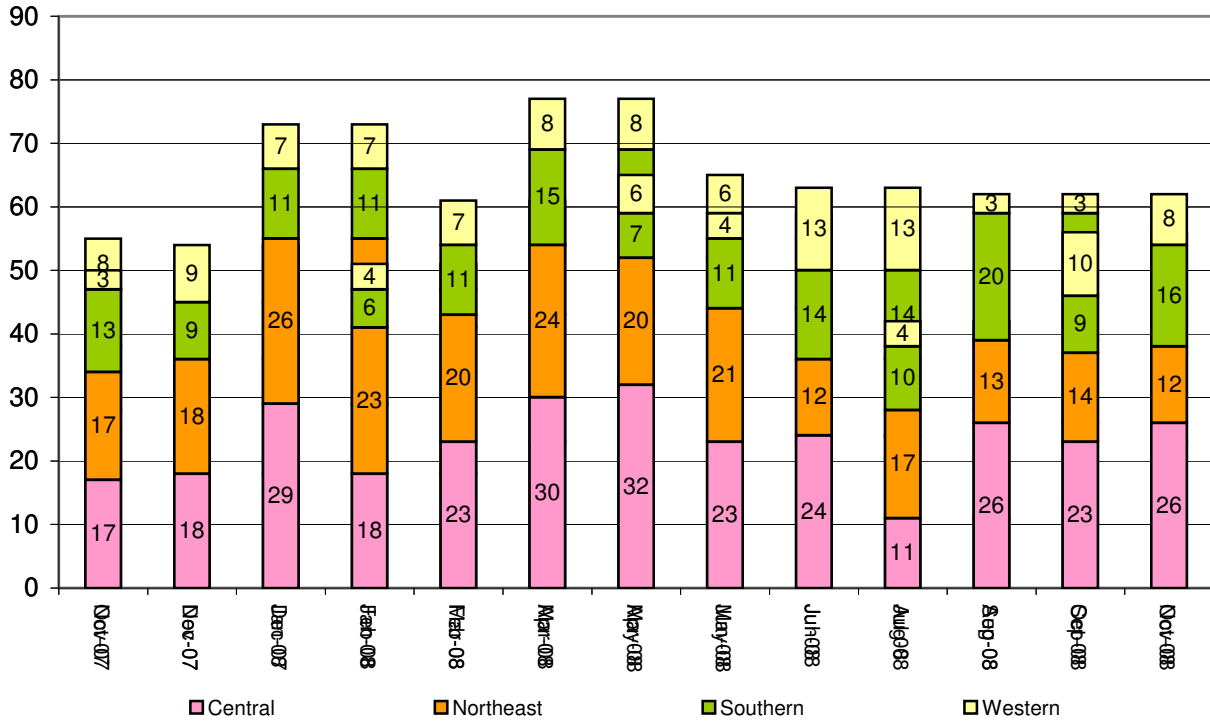
# November 2008 DYC Population Report

## V. New Commitments

### New Commitments by Region

	<u>November 2008</u>	<u>YTD</u>	<u>November 2007</u>	<u>Last YTD</u>
Central Region	26	120	17	128
Northeast Region	12	68	17	86
Southern Region	16	70	13	74
Western Region	8	38	3	31
<b>New Commitment Total</b>	<b>62</b>	<b>296</b>	<b>50</b>	<b>319</b>

### Monthly New Commitments



# November 2008 DYC Population Report

## VI. Parole Services

### Parole ADP by Region

	<u>November 2008</u>	<u>YTD</u>	<u>Last YTD</u>
Central Region	196.2	193.1	211.3
Northeast Region	125.3	127.3	143.3
Southern Region	93.0	100.5	99.6
Western Region	49.5	43.5	58.1
<b>Parole Total</b>	<b>464.0</b>	<b>464.4</b>	<b>512.4</b>

### Parole Intakes                      Parole Discharges                      Parole LOS

	<u>November 2008</u>		<u>YTD</u>		<u>YTD</u>	
Central Region	12	131	24	125	7.3	
Northeast Region	13	88	18	81	6.2	
Southern Region	10	70	13	74	6.4	
Western Region	8	39	5	27	6.2	
<b>Parole Total</b>	<b>43</b>	<b>328</b>	<b>60</b>	<b>307</b>	<b>6.7</b>	

### Monthly Parole ADP

