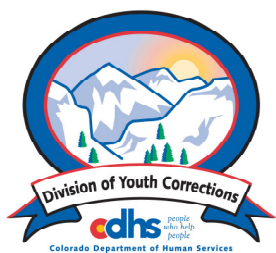


# OCTOBER 2008 MONTHLY POPULATION REPORT

---

Prepared by the Division of Youth Corrections Research and Evaluation Unit November 17, 2008



**Colorado Department of Human Services**  
**Division of Youth Corrections**

---

Working with Colorado Communities to Achieve Justice

# October 2008

## DYC Population Report

<b>I.</b>	<b>Summary Population Data</b>	<b>1</b>
<b>II.</b>	<b>Detention ADP by Facility</b>	<b>2</b>
<b>III.</b>	<b>Commitment Services</b>	
	A. State and Contract Secure ADP by Facility	<b>3</b>
	B. Community/Other Residential ADP by Facility	<b>4</b>
<b>IV.</b>	<b>New Commitments</b>	<b>5</b>
<b>V.</b>	<b>Parole Services</b>	<b>6</b>

# October 2008 DYC Population Report

## I. Summary Population Data\*

DETAINED YOUTH	Average Daily Population (ADP)		Length of Stay (LOS)
	October 2008	YTD	YTD
State-Operated	378.6	375.1	14.0 days
Contracted Staff Secure	22.6	21.8	12.9 days
<b>Total Detained</b>	<b>401.3</b>	<b>396.9</b>	<b>13.9 days</b>

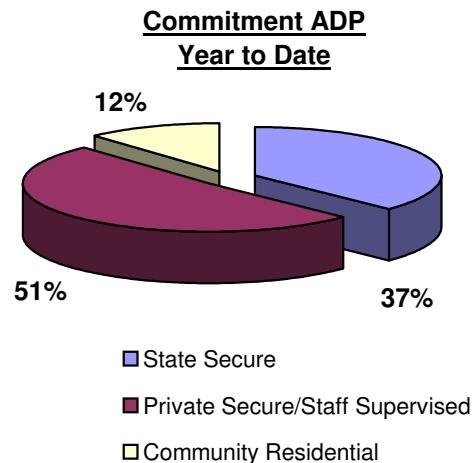
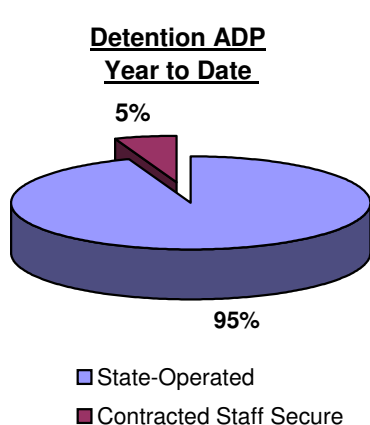
COMMITTED YOUTH	Average Daily Population (ADP)		Length of Stay (LOS)
	October 2008	YTD	YTD
State Secure	440.8	446.8	
Private Secure/Staff Supervised	612.7	612.8	
Community Residential	133.3	141.4	
Other Residential**	21.7	25.8	
<b>Total Committed Residential</b>	<b>1,208.5</b>	<b>1,226.8</b>	<b>18.9 months</b>
<i>Committed Residential w/o Boulder</i>	<i>1,203.4</i>	<i>1,220.8</i>	

PAROLED YOUTH	Average Daily Population (ADP)		Length of Stay (LOS)
	October 2008	YTD	YTD
<b>Total Paroled</b>	<b>474.7</b>	<b>462.2</b>	<b>6.8 months</b>

TOTAL STATEWIDE ADP	October 2008	YTD
	<b>2,084.4</b>	<b>2,085.9</b>



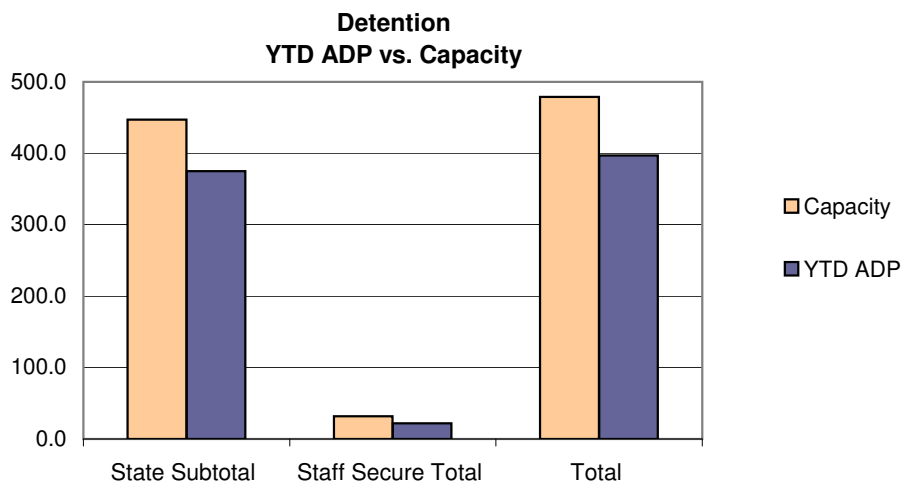
\*Due to rounding, totals shown may not be an exact sum of the subtotals

\*\*Includes Group Homes, Job Corps, Hospitals, Mental Health Institutes, Shelter Care, etc.

# October 2008 DYC Population Report

## III. Detention Program Services Continued D. Detention Data by Facility

Facility	Average Daily Population				New Admissions		YTD LOS in Days
	Operating Capacity	October 2008	YTD	YTD % of Capacity	October 2008	YTD	LOS
<i>State Operated Detention</i>							
Adams	29	23.7	26.6	91.8%	61	262	11.9
Gilliam	73	67.0	63.7	87.2%	99	392	19.4
Grand Mesa	24	20.7	19.5	81.4%	46	179	11.8
Marvin Foote	92	80.6	79.8	86.7%	134	598	15.9
Mount View	60	49.5	46.3	77.2%	105	359	15.6
Platte Valley	69	63.6	60.5	87.7%	139	602	12.0
Pueblo	42	26.8	31.4	74.8%	85	328	11.7
Spring Creek	58	46.7	47.2	81.4%	136	485	11.9
<i>State Subtotal</i>	<i>447</i>	<i>378.6</i>	<i>375.1</i>	<i>83.9%</i>	<i>805</i>	<i>3,205</i>	<i>14.0</i>
<i>Staff Secure Detention</i>							
Brown Center	2	1.9	1.5	74.5%	4	14	14.1
Hilltop	7	5.1	3.9	55.2%	8	36	9.7
Midway (Remington)	8	3.3	4.0	49.4%	17	52	10.0
Robert DeNier	9	8.9	9.0	100.1%	14	64	16.7
Youthtrack San Luis Valley	6	3.4	3.5	58.3%	11	35	12.3
<i>Staff Secure Total</i>	<i>32</i>	<i>22.6</i>	<i>21.8</i>	<i>68.1%</i>	<i>54</i>	<i>201</i>	<i>12.9</i>
<b>TOTAL</b>	<b>479</b>	<b>401.3</b>	<b>396.9</b>	<b>82.9%</b>	<b>859</b>	<b>3,406</b>	<b>13.9</b>



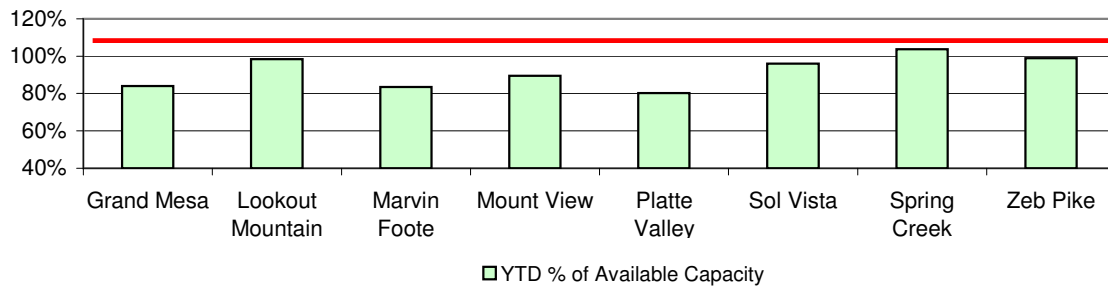
# October 2008 DYC Population Report

## IV. Commitment Services

### A. State and Contract Secure ADP by Facility

Facility	Operational Capacity (YTD)	October 2008	YTD	YTD % of Operational Capacity	YTD % of Current Available Capacity
<b>State Secure</b>					
Adams	0	1.3	0.4	N/A	N/A
Gilliam	0	1.0	0.9	N/A	N/A
Grand Mesa	44	33.5	37.0	84.1%	84.1%
Lookout	168	167.4	165.4	98.5%	98.5%
Marvin Foote	22	18.8	18.4	83.5%	83.5%
Mount View	73	63.9	65.4	89.5%	89.5%
Platte Valley	66	49.4	52.9	80.2%	80.2%
Pueblo	0	0.6	0.9	N/A	N/A
Sol Vista	20	18.8	19.2	96.0%	96.0%
Spring Creek	45	45.6	46.7	103.8%	103.8%
Zeb Pike	40	40.6	39.6	99.0%	99.0%
<i>State Subtotal</i>	<i>478.0</i>	<i>440.8</i>	<i>446.8</i>	<i>93.5%</i>	<i>93.5%</i>
<b>Contract Secure/Staff Supervised</b>					
Alternative Homes For Youth - Greeley		11.0	10.3		
Betty K. Marler Center		40.9	40.7		
Brown Center		0.0	0.1		
Childrens Ark		6.0	6.7		
Devereux Cleo Wallace		16.4	18.0		
El Pueblo Ranch		2.1	2.7		
Gateway Residential Program		3.5	2.7		
Griffith Center, Grand Ave Girls (WR)		0.0	1.6		
Hand Up Homes for Youth - West		3.0	2.7		
Hilltop (Residential Youth Services)		9.3	11.4		
Jefferson Hills		30.2	37.2		
Jefferson Hills Aurora		36.8	36.0		
Kidz Ark Sterling		1.0	2.4		
Mountain Star Center		3.7	3.9		
Ridge View		407.9	400.9		
Robert DeNier		14.2	13.9		
Southern Peaks		22.3	18.8		
Third Way Center - Lowry		3.3	1.9		
Youth Villages		1.0	1.0		
<i>Contract Secure Subtotal</i>		<i>612.7</i>	<i>612.8</i>		

**State Secure Commitment  
Percent of Available Capacity by Facility**



# October 2008

## DYC Population Report

### IV. Commitment Services Continued

#### B. Community/Other Residential APD by Facility, ADP by Region

<u>Facility</u>	<u>October</u> <u>2008</u>	<u>YTD</u>
<b>Community</b>		
Ariel Clinical Services	0.0	0.2
Boulder Community Treatment Center	1.0	0.7
Dale House Project	11.3	10.8
Daybreak & Daybreak Princeton	4.0	4.2
Denver Area Youth Services (DAYS)	3.0	4.8
Gateway Youth and Family Services	1.0	2.0
Griffith Centers (SR)	3.6	5.3
Job Corps	3.6	2.1
Kidz Ark New Raymer Ranch	2.0	1.3
Lost and Found Inc., Arvada	7.3	8.4
Lost and Found Inc., Morrison	2.1	2.4
Marilee Center	1.0	1.8
Mesa County Community Corrections	7.0	5.6
Mt Evans Qualifying House	10.0	10.5
Reflections For Youth Inc., Prairie View	3.0	1.9
Reflections For Youth Inc., Wilderness	1.0	1.0
ROP-Canyon State Academy	1.0	0.3
Southwest Colorado Community Corrections	1.0	1.0
Summit Treatment Service, Inc	15.4	15.9
Synergy Administration	3.4	4.2
Third Way Center	2.0	1.7
Third Way Center, Pontiac	4.4	5.6
Third Way Center, York	3.2	2.6
Third Way Center, Lincoln	3.3	4.2
Turning Point Center (Boys Residential)	8.3	11.5
Turning Point, Mathews St.	6.7	7.6
Youthtrack, Jeffco	2.0	2.5
Youthtrack, San Luis Valley	2.5	2.1
Youthtrack, Work and Learn	10.9	10.1
Youth Ventures	8.3	9.4
<i>Community Subtotal</i>	<i>133.3</i>	<i>141.4</i>
<i>Private Contract Total</i>	<i>746.0</i>	<i>754.2</i>
<i>Other Residential*</i>	<i>21.7</i>	<i>25.8</i>
<b>RESIDENTIAL TOTAL</b>	<b>1,208.5</b>	<b>1,226.8</b>

#### ADP by Region

<u>Region</u>	<u>October</u>	<u>YTD</u>
Central	508.5	512.5
Northeast	332.7	344.7
Southern	254.6	251.2
Western	112.6	118.4
Total	1,208.5	1,226.8

*\*Includes Group Homes, Job Corps, Hospitals, Mental Health Institutes, Shelter Care, etc.*

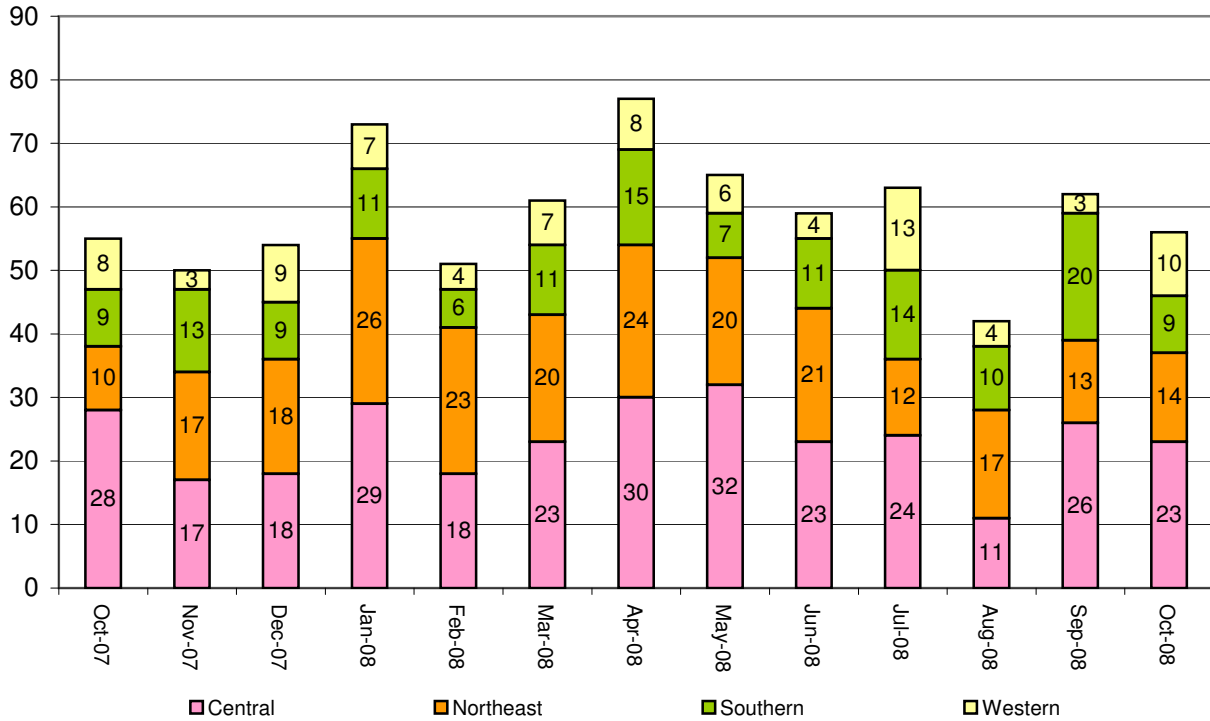
# October 2008 DYC Population Report

## V. New Commitments

### New Commitments by Region

	<u>October 2008</u>	<u>YTD</u>	<u>October 2007</u>	<u>Last YTD</u>
Central Region	23	93	28	99
Northeast Region	14	56	10	70
Southern Region	9	54	9	60
Western Region	10	30	8	28
<b>New Commitment Total</b>	<b>56</b>	<b>233</b>	<b>55</b>	<b>257</b>

### Monthly New Commitments



# October 2008 DYC Population Report

## VI. Parole Services

### Parole ADP by Region

	<u>October 2008</u>	<u>YTD</u>	<u>Last YTD</u>
Central Region	198.6	192.6	211.0
Northeast Region	131.4	125.5	141.5
Southern Region	101.9	102.3	96.6
Western Region	42.8	41.7	61.0
<b>Parole Total</b>	<b>474.7</b>	<b>462.2</b>	<b>510.0</b>

### Parole Intakes

### Parole Discharges

### Parole LOS

	<u>October 2008</u>	<u>YTD</u>	<u>October 2008</u>	<u>YTD</u>	<u>YTD</u>
Central Region	23	120	19	100	7.6
Northeast Region	14	74	16	62	6.2
Southern Region	10	60	20	58	6.2
Western Region	9	29	3	22	6.6
<b>Parole Total</b>	<b>56</b>	<b>283</b>	<b>58</b>	<b>242</b>	<b>6.8</b>

### Monthly Parole ADP

