

# SEPTEMBER 2008 MONTHLY POPULATION REPORT

---

Prepared by the Division of Youth Corrections Research and Evaluation Unit  
October 27, 2008



Colorado Department of Human Services  
Division of Youth Corrections

---

# September 2008

## DYC Population Report

<b>I.</b>	<b>Summary Population Data</b>	<b>1</b>
<b>II.</b>	<b>Detention ADP by Facility</b>	<b>2</b>
<b>III.</b>	<b>Commitment Services</b>	
	A. State and Contract Secure ADP by Facility	<b>3</b>
	B. Community/Other Residential ADP by Facility	<b>4</b>
<b>IV.</b>	<b>New Commitments</b>	<b>5</b>
<b>V.</b>	<b>Parole Services</b>	<b>6</b>

# September 2008 DYC Population Report

## I. Summary Population Data\*

<b>DETAINED YOUTH</b>	<b>Average Daily Population (ADP)</b>		<b>Length of Stay (LOS)</b>
	<b>September 2008</b>	<b>YTD</b>	<b>YTD</b>
State-Operated	375.3	373.5	13.9 days
Contracted Staff Secure	18.7	21.7	14.5 days
<b>Total Detained</b>	<b>394.1</b>	<b>395.3</b>	<b>13.9 days</b>

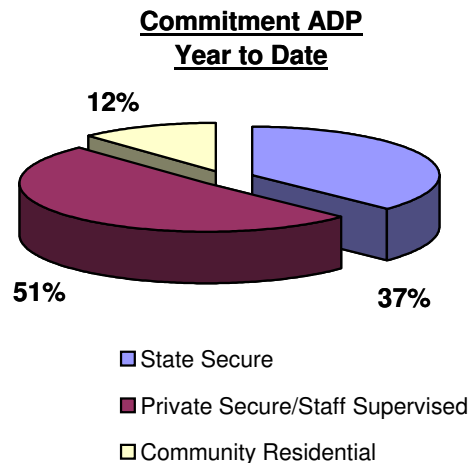
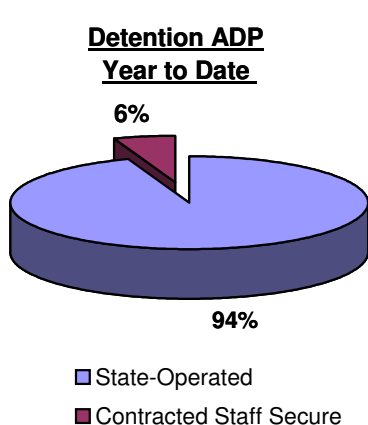
<b>COMMITTED YOUTH</b>	<b>Average Daily Population (ADP)</b>		<b>Length of Stay (LOS)</b>
	<b>September 2008</b>	<b>YTD</b>	<b>YTD</b>
State Secure	450.3	448.8	
Private Secure/Staff Supervised	605.6	613.8	
Community Residential	143.4	144.2	
Other Residential**	24.0	25.5	
<b>Total Committed Residential</b>	<b>1,223.4</b>	<b>1,232.2</b>	<b>19.1 months</b>
<i>Committed Residential w/o Boulder</i>	<i>1,219.2</i>	<i>1,225.9</i>	

<b>PAROLED YOUTH</b>	<b>Average Daily Population (ADP)</b>		<b>Length of Stay (LOS)</b>
	<b>September 2008</b>	<b>YTD</b>	<b>YTD</b>
<b>Total Paroled</b>	<b>466.3</b>	<b>457.2</b>	<b>7.1 months</b>

<b>TOTAL STATEWIDE ADP</b>	<b>2,083.7</b>	<b>2,084.7</b>
----------------------------	----------------	----------------



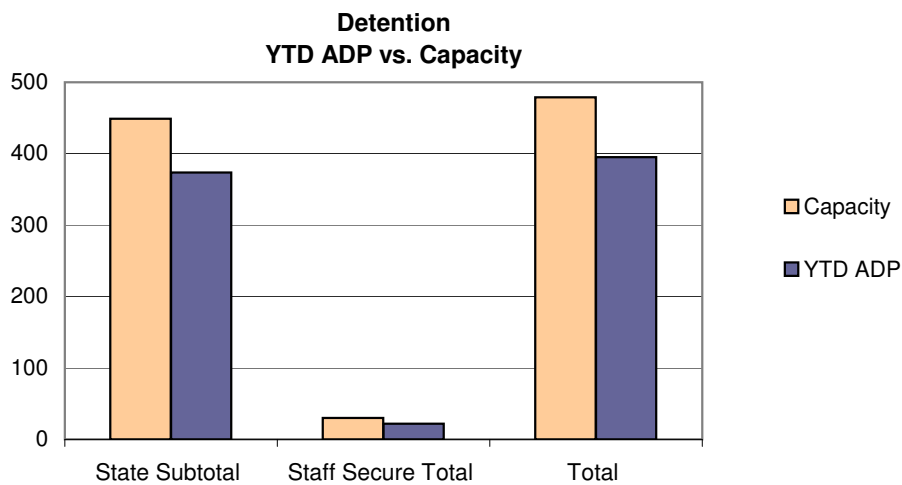
\*Due to rounding, totals shown may not be an exact sum of the subtotals

\*\*Includes Group Homes, Job Corps, Hospitals, Mental Health Institutes, Shelter Care, etc.

# September 2008 DYC Population Report

## III. Detention Program Services Continued D. Detention Data by Facility

Facility	Average Daily Population				New Admissions		YTD LOS in Days
	Operating Capacity	September 2008	YTD	YTD % of Capacity	September 2008	YTD	LOS
<i>State Operated Detention</i>							
Adams	29	28.4	27.5	94.7%	78	202	11.9
Gilliam	73	65.0	62.5	85.7%	122	293	20.6
Grand Mesa	24	18.9	19.1	79.7%	43	133	12.0
Marvin Foote	96	79.4	79.5	82.8%	147	464	15.5
Mount View	60	47.0	45.2	75.4%	93	254	15.8
Platte Valley	69	59.4	59.5	86.3%	157	463	10.8
Pueblo	40	28.9	33.0	82.4%	77	243	11.9
Spring Creek	58	48.3	47.2	81.3%	102	348	11.9
<i>State Subtotal</i>	<i>449</i>	<i>375.3</i>	<i>373.5</i>	<i>83.2%</i>	<i>819</i>	<i>2,400</i>	<i>13.9</i>
<i>Staff Secure Detention</i>							
Brown Center	2	1.5	1.3	67.1%	4	10	13.2
Hilltop	5	4.1	3.4	68.6%	8	28	9.0
Midway (Remington)	8	3.0	4.2	52.3%	10	35	12.0
Robert DeNier	9	7.2	9.3	102.9%	17	49	19.9
Youthtrack San Luis Valley	6	3.0	3.5	58.7%	10	24	14.3
<i>Staff Secure Total</i>	<i>30</i>	<i>18.7</i>	<i>21.7</i>	<i>72.5%</i>	<i>49</i>	<i>146</i>	<i>14.5</i>
<b>TOTAL</b>	<b>479</b>	<b>394.1</b>	<b>395.3</b>	<b>82.5%</b>	<b>868</b>	<b>2,546</b>	<b>13.9</b>



# September 2008 DYC Population Report

## IV. Commitment Services

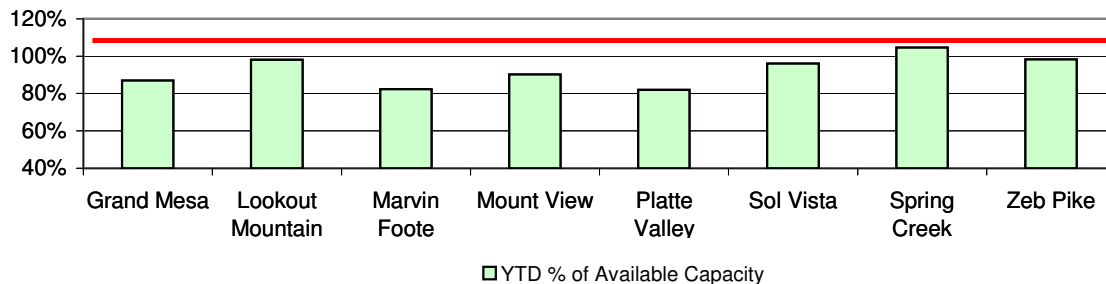
### A. State and Contract Secure ADP by Facility

<u>Facility</u>	<u>Operational Capacity (YTD)</u>	<u>September 2008</u>	<u>YTD</u>	<u>YTD % of Operational Capacity</u>	<u>YTD % of Current Available Capacity</u>
<b>State Secure</b>					
Adams	0	0.1	0.3	N/A	N/A
Gilliam	0	1.2	0.8	N/A	N/A
Grand Mesa	44	36.7	38.3	86.9%	86.9%
Lookout	168	163.2	164.8	98.1%	98.1%
Marvin Foote	22	18.3	18.1	82.4%	82.4%
Mount View	73	66.1	65.8	90.1%	90.1%
Platte Valley	66	53.3	54.1	82.0%	82.0%
Pueblo	0	1.4	1.1	N/A	N/A
Sol Vista	20	18.4	19.2	96.1%	96.1%
Spring Creek	45	51.5	47.1	104.6%	104.6%
Zeb Pike	40	40.3	39.3	98.2%	98.2%
<i>State Subtotal</i>	<i>478.0</i>	<i>450.3</i>	<i>448.8</i>	<i>93.9%</i>	<i>93.9%</i>

### Contract Secure/Staff Supervised

Alternative Homes For Youth - Greeley	11.6	10.1		
Betty K. Marler Center	40.5	40.5		
Brown Center	0.0	0.2		
Childrens Ark	6.0	6.9		
Devereux Cleo Wallace	17.9	18.6		
El Pueblo Ranch	2.0	2.9		
Gateway Residential Program	3.7	2.5		
Griffith Center, Grand Ave Girls (WR)	0.2	2.1		
Hand Up Homes for Youth - West	3.0	2.6		
Hilltop (Residential Youth Services)	12.9	12.6		
Jefferson Hills	35.3	39.6		
Jefferson Hills Aurora	35.7	35.7		
Kidz Ark Sterling	2.5	2.9		
Mountain Star Center	4.0	3.9		
Ridge View	394.5	398.7		
Robert DeNier	13.2	13.7		
Southern Peaks	19.4	18.0		
Third Way Center - Lowry	2.4	1.4		
Youth Villages	1.0	1.0		
<i>Contract Secure Subtotal</i>	<i>605.6</i>	<i>613.8</i>		

**State Secure Commitment  
Percent of Available Capacity by Facility**



# September 2008

## DYC Population Report

### IV. Commitment Services Continued

#### B. Community/Other Residential APD by Facility, ADP by Region

<u>Facility</u>	<u>September</u> <u>2008</u>	<u>YTD</u>
<b>Community</b>		
Ariel Clinical Services	0.0	0.3
Boulder Community Treatment Center	1.0	0.6
Dale House Project	11.6	10.6
Daybreak & Daybreak Princeton	4.0	4.3
Denver Area Youth Services (DAYS)	5.0	5.4
Gateway Youth and Family Services	1.4	2.3
Griffith Centers (SR)	4.2	5.8
Job Corps	2.0	1.6
Kidz Ark New Raymer Ranch	1.5	1.0
Lost and Found Inc., Arvada	8.4	8.7
Lost and Found Inc., Morrison	3.2	2.5
Marilee Center	1.7	2.0
Mesa County Community Corrections	6.0	5.1
Mt Evans Qualifying House	11.9	10.6
Reflections For Youth Inc., Prairie View	2.2	1.6
Reflections For Youth Inc., Wilderness	1.0	1.0
ROP-Canyon State Academy	0.1	0.0
Southwest Colorado Community Corrections	1.0	1.0
Summit Treatment Service, Inc	16.1	16.0
Synergy Administration	4.4	4.5
Third Way Center	2.0	1.6
Third Way Center, Pontiac	5.8	6.1
Third Way Center, York	2.5	2.3
Third Way Center, Lincoln	4.5	4.6
Turning Point Center (Boys Residential)	9.3	12.6
Turning Point, Mathews St.	8.2	7.9
Youthtrack, Jeffco	2.4	2.7
Youthtrack, San Luis Valley	2.0	2.0
Youthtrack, Work and Learn	10.4	9.8
Youth Ventures	10.0	9.8
<i>Community Subtotal</i>	<i>143.4</i>	<i>144.2</i>
<i>Private Contract Total</i>	<i>749.1</i>	<i>758.0</i>
<i>Other Residential*</i>	<i>24.0</i>	<i>25.5</i>
<b>RESIDENTIAL TOTAL</b>	<b>1,223.4</b>	<b>1,232.2</b>

#### ADP by Region

<u>Region</u>	<u>September</u>	<u>YTD</u>
Central	509.0	512.2
Northeast	345.1	348.6
Southern	250.4	250.4
Western	118.9	120.9
Total	1223.4	1232.2

\*Includes Group Homes, Job Corps, Hospitals, Mental Health Institutes, Shelter Care, etc.

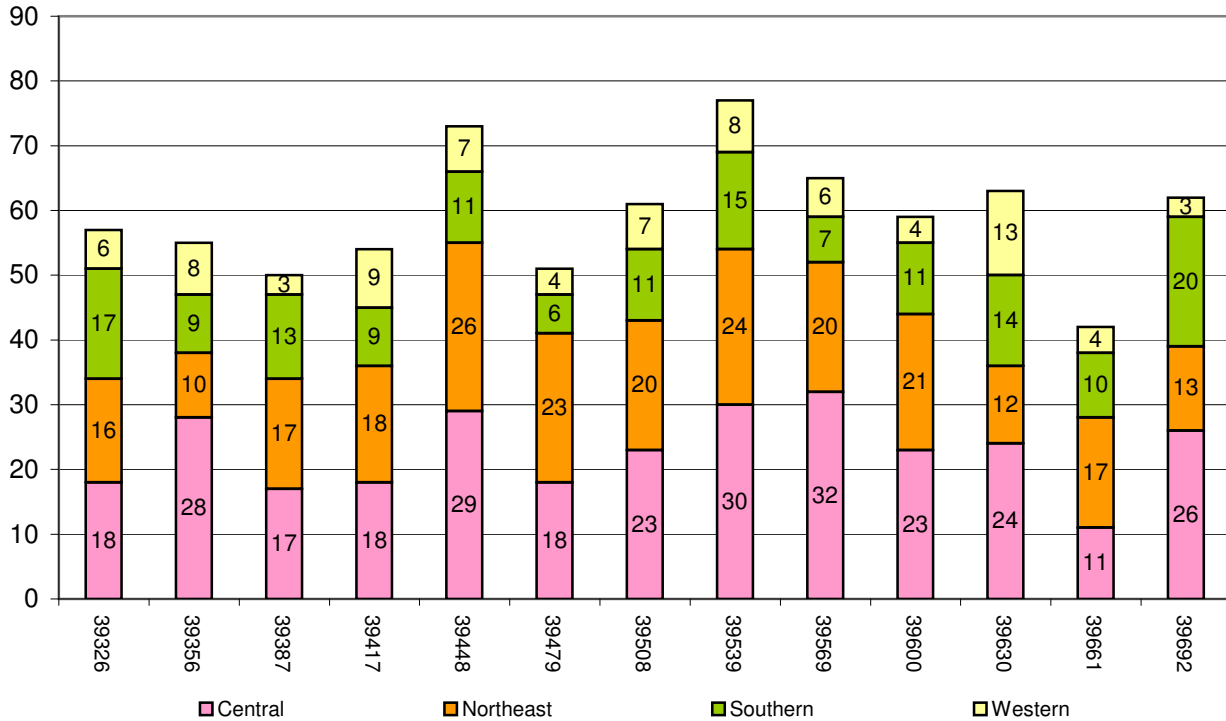
# September 2008 DYC Population Report

## V. New Commitments

### New Commitments by Region

	<u>September 2008</u>	<u>YTD</u>	<u>September 2007</u>	<u>Last YTD</u>
Central Region	26	70	18	71
Northeast Region	13	42	16	60
Southern Region	20	45	17	51
Western Region	3	20	6	20
<b>New Commitment Total</b>	<b>62</b>	<b>177</b>	<b>57</b>	<b>202</b>

### Monthly New Commitments



# September 2008 DYC Population Report

## VI. Parole Services

### Parole ADP by Region

	<u>September 2008</u>	<u>YTD</u>	<u>Last YTD</u>
Central Region	192.9	189.8	207.1
Northeast Region	129.0	124.8	137.4
Southern Region	104.0	101.0	92.8
Western Region	40.3	41.5	63.8
<b>Parole Total</b>	<b>466.3</b>	<b>457.2</b>	<b>501.1</b>

### Parole Intakes

### Parole Discharges

### Parole LOS

	<u>September 2008</u>	<u>YTD</u>	<u>September 2008</u>	<u>YTD</u>	<u>YTD</u>
Central Region	34	97	27	80	7.9
Northeast Region	20	60	13	46	6.3
Southern Region	9	48	12	35	6.6
Western Region	5	20	6	18	6.7
<b>Parole Total</b>	<b>68</b>	<b>225</b>	<b>58</b>	<b>179</b>	<b>7.1</b>

### Monthly Parole ADP

