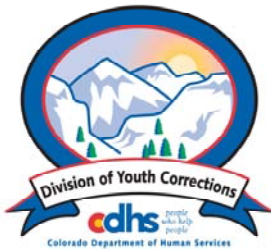


AUGUST 2008 MONTHLY POPULATION REPORT

Prepared by the Division of Youth Corrections Research and Evaluation Unit September 17, 2008



Colorado Department of Human Services
Division of Youth Corrections

Working with Colorado Communities to Achieve Justice

August 2008

DYC Population Report

I.	Summary Population Data	1
II.	Detention ADP by Facility	2
III.	Commitment Services	
	A. State and Contract Secure ADP by Facility	3
	B. Community/Other Residential ADP by Facility	4
IV.	New Commitments	5
V.	Parole Services	6

August 2008 DYC Population Report

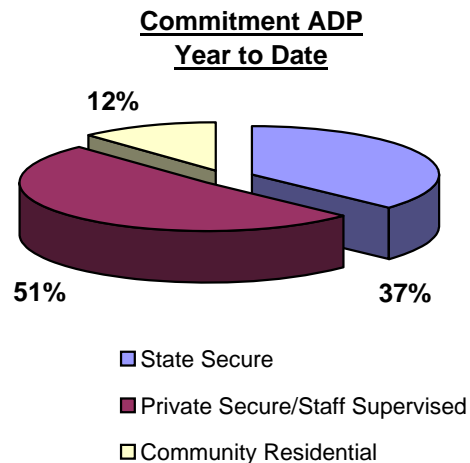
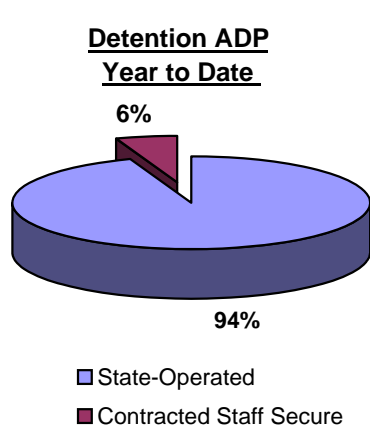
I. Summary Population Data*

DETAINED YOUTH	Average Daily Population (ADP)		Length of Stay (LOS)
	August 2008	YTD	YTD
State-Operated	368.6	377.5	13.6 days
Contracted Staff Secure	21.2	22.3	14.6 days
Total Detained	389.8	399.8	13.7 days

COMMITTED YOUTH	Average Daily Population (ADP)		Length of Stay (LOS)
	August 2008	YTD	YTD
State Secure	438.1	447.1	
Private Secure/Staff Supervised	616.5	619.0	
Community Residential	144.3	144.3	
Other Residential**	25.3	26.3	
Total Committed Residential	1,224.1	1,236.6	19.3 months
<i>Committed Residential w/o Boulder</i>	<i>1,217.1</i>	<i>1,229.3</i>	

PAROLED YOUTH	Average Daily Population (ADP)		Length of Stay (LOS)
	August 2008	YTD	YTD
Total Paroled	457.3	451.7	7.4 months

TOTAL STATEWIDE ADP	2,071.2	2,088.2
----------------------------	----------------	----------------



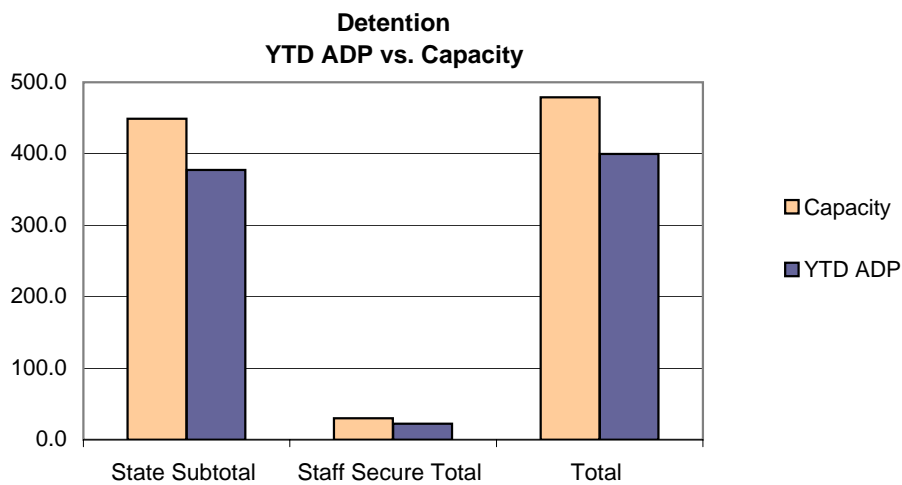
*Due to rounding, totals shown may not be an exact sum of the subtotals

**Includes Group Homes, Job Corps, Hospitals, Mental Health Institutes, Shelter Care, etc.

August 2008 DYC Population Report

II. Detention Program Services

Facility	Average Daily Population			New Admissions		YTD LOS in Days	
	Operating Capacity	August 2008	YTD	YTD % of Capacity	August 2008	YTD	LOS
<i>State Operated Detention</i>							
Adams	29	25.4	27.0	93.1%	53	125	11.5
Gilliam	73	52.6	61.3	84.0%	72	171	21.1
Grand Mesa	24	19.6	19.2	80.1%	47	90	9.7
Marvin Foote	96	82.3	81.6	85.0%	132	320	14.9
Mount View	60	47.9	47.2	78.7%	74	162	14.3
Platte Valley	69	62.0	59.9	86.9%	160	306	10.9
Pueblo	40	33.2	34.6	86.5%	82	165	13.0
Spring Creek	58	45.7	46.7	80.4%	131	246	11.7
<i>State Subtotal</i>	<i>449</i>	<i>368.6</i>	<i>377.5</i>	<i>84.1%</i>	<i>751</i>	<i>1,585</i>	<i>13.6</i>
<i>Staff Secure Detention</i>							
Brown Center	2	0.9	1.3	63.9%	3	6	14.8
Hilltop	5	2.7	3.1	62.3%	14	20	9.3
Midway (Remington)	8	4.9	4.9	60.6%	8	25	13.0
Robert DeNier	9	10.2	9.2	102.8%	12	32	17.9
Youthtrack San Luis Valley	6	2.5	3.8	62.9%	5	14	16.6
<i>Staff Secure Total</i>	<i>30</i>	<i>21.2</i>	<i>22.3</i>	<i>74.2%</i>	<i>42</i>	<i>97</i>	<i>14.6</i>
TOTAL	479	389.8	399.8	83.5%	793	1,682	13.7



August 2008 DYC Population Report

III. Commitment Services

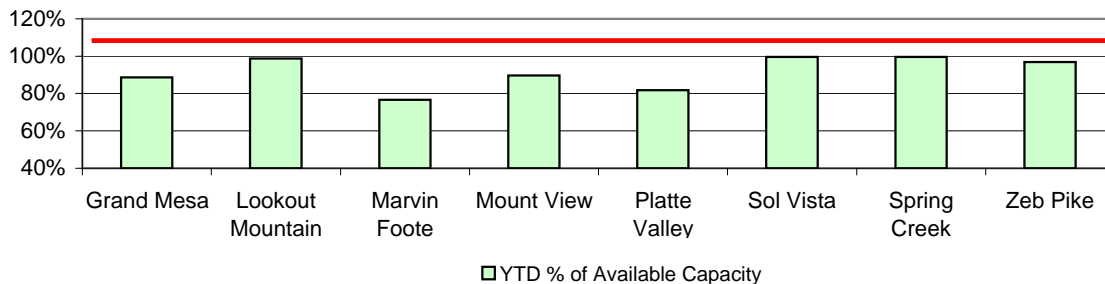
A. State and Contract Secure ADP by Facility

<u>Facility</u>	<u>Operational Capacity (YTD)</u>	<u>August 2008</u>	<u>YTD</u>	<u>YTD % of Operational Capacity</u>	<u>YTD % of Current Available Capacity</u>
State Secure					
Adams	0	0.5	0.4	N/A	N/A
Gilliam	0	0.9	0.6	N/A	N/A
Grand Mesa	44	38.2	39.0	88.6%	88.6%
Lookout	168.0	165.3	165.9	98.8%	98.8%
Marvin Foote	22	17.1	16.9	76.6%	76.6%
Mount View	73	64.1	65.5	89.8%	89.8%
Platte Valley	66	48.3	54.0	81.8%	81.8%
Pueblo	0	1.9	1.2	N/A	N/A
Sol Vista	20	20.0	19.9	99.7%	99.7%
Spring Creek	45	42.5	44.8	99.6%	99.6%
Zeb Pike	40	39.4	38.8	96.9%	96.9%
<i>State Subtotal</i>	<i>478.0</i>	<i>438.1</i>	<i>447.1</i>	<i>93.5%</i>	<i>93.5%</i>

Contract Secure/Staff Supervised

Alternative Homes For Youth - Greeley		10.3	9.4
Betty K. Marler Center		39.4	39.9
Brown Center		0.0	0.2
Childrens Ark		7.1	7.4
Devereux Cleo Wallace		17.7	18.9
El Pueblo Ranch		2.6	3.3
Gateway Residential Program		1.5	1.9
Griffith Center, Grand Ave Girls (WR)		2.2	3.0
Hand Up Homes for Youth - West		2.7	2.4
Hilltop (Residential Youth Services)		13.2	12.5
Jefferson Hills		41.8	41.6
Jefferson Hills Aurora		36.8	36.1
Kidz Ark Sterling		3.0	3.1
Mountain Star Center		4.0	3.9
Ridge View		400.1	402.0
Robert DeNier		14.1	14.9
Southern Peaks		18.1	16.7
Third Way Center - Lowry		0.8	0.8
Youth Villages		1.0	1.0
<i>Contract Secure Subtotal</i>		<i>616.5</i>	<i>619.0</i>

**State Secure Commitment
Percent of Available Capacity by Facility**



August 2008

DYC Population Report

III. Commitment Services Continued

B. Community/Other Residential APD by Facility, ADP by Region

<u>Facility</u>	<u>August 2008</u>	<u>YTD</u>
Community		
Ariel Clinical Services	0.0	0.4
Boulder Community Treatment Center	0.8	0.4
Dale House Project	9.5	10.0
Daybreak & Daybreak Princeton	3.8	4.4
Denver Area Youth Services (DAYS)	5.4	5.6
Gateway Youth and Family Services	2.6	2.8
Griffith Centers (SR)	5.1	6.6
Job Corps	2.0	1.4
Kidz Ark New Raymer Ranch	1.0	0.8
Lost and Found Inc., Arvada	8.1	8.9
Lost and Found Inc., Morrison	2.3	2.1
Marilee Center	2.0	2.2
Mesa County Community Corrections	5.4	4.7
Mt Evans Qualifying House	10.8	10.0
Reflections For Youth Inc., Prairie View	1.6	1.3
Reflections For Youth Inc., Wilderness	1.0	1.0
Southwest Colorado Community Corrections	1.0	1.0
Summit Treatment Service, Inc	16.0	16.0
Synergy Administration	4.5	4.8
Third Way Center	2.0	1.4
Third Way Center, Pontiac	6.9	6.3
Third Way Center, York	2.2	2.3
Third Way Center, Lincoln	5.0	4.6
Turning Point Center (Boys Residential)	13.5	14.2
Turning Point, Mathews St.	8.0	7.7
Youthtrack, Jeffco	2.3	2.8
Youthtrack, San Luis Valley	2.0	2.0
Youthtrack, Work and Learn	9.7	9.6
Youth Ventures	10.7	10.1
<i>Community Subtotal</i>	<i>144.3</i>	<i>144.3</i>
<i>Private Contract Total</i>	<i>760.7</i>	<i>763.2</i>
<i>Other Residential*</i>	<i>25.3</i>	<i>26.3</i>
RESIDENTIAL TOTAL	1,224.1	1,236.6

ADP by Region

<u>Region</u>	<u>August</u>	<u>YTD</u>
Central	510.6	513.5
Northeast	347.9	350.0
Southern	242.9	250.2
Western	122.7	122.9
Total	1224.1	1236.6

*Includes Group Homes, Job Corps, Hospitals, Mental Health Institutes, Shelter Care, etc.

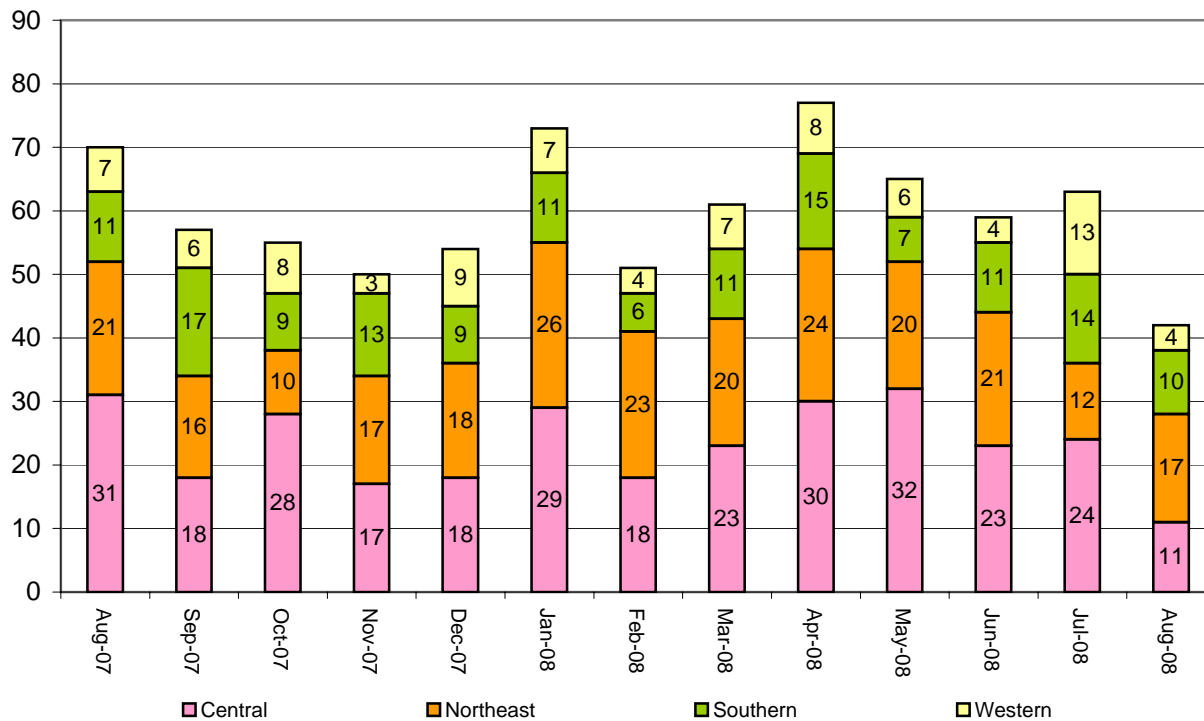
August 2008 DYC Population Report

IV. New Commitments

New Commitments by Region

	<u>August 2008</u>	<u>YTD</u>	<u>August 2007</u>	<u>Last YTD</u>
Central Region	11	40	31	53
Northeast Region	17	28	21	44
Southern Region	10	24	11	32
Western Region	4	17	7	14
New Commitment Total	42	109	70	143

Monthly New Commitments



August 2008 DYC Population Report

V. Parole Services

Parole ADP by Region

	<u>August 2008</u>	<u>YTD</u>	<u>Last YTD</u>
Central Region	191.9	189.0	202.8
Northeast Region	124.2	122.4	130.8
Southern Region	100.2	98.6	91.0
Western Region	41.0	41.8	65.3
Parole Total	457.3	451.7	490.0

Parole Intakes

Parole Discharges

Parole LOS

	<u>August 2008</u>	<u>YTD</u>	<u>August 2008</u>	<u>YTD</u>	<u>YTD</u>
Central Region	33	63	26	52	8.4
Northeast Region	19	40	10	32	6.2
Southern Region	27	39	11	22	7.1
Western Region	6	15	5	12	6.5
Parole Total	85	157	52	118	7.4

Monthly Parole ADP

