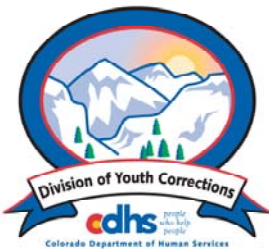


JULY 2008 MONTHLY POPULATION REPORT

Prepared by the Division of Youth Corrections Research and Evaluation Unit August 19, 2008



Colorado Department of Human Services
Division of Youth Corrections

Working with Colorado Communities to Achieve Justice

July 2008

DYC Population Report

I.	Summary Population Data	1
II.	Detention ADP by Facility	2
III.	Commitment Services	
	A. State and Contract Secure ADP by Facility	3
	B. Community/Other Residential ADP by Facility	4
IV.	New Commitments	5
V.	Parole Services	6

July 2008 DYC Population Report

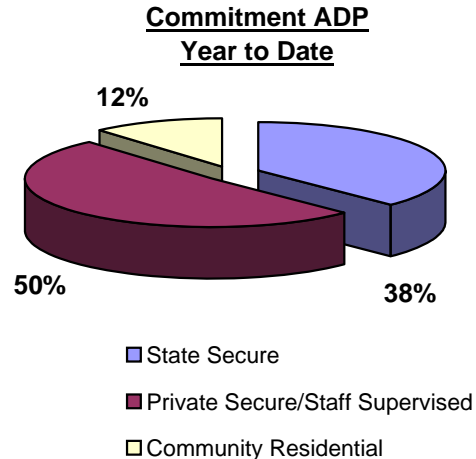
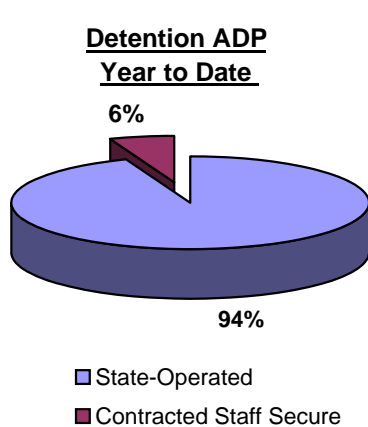
I. Summary Population Data*

DETAINED YOUTH	Average Daily Population (ADP)		Length of Stay (LOS)
	July 2008	YTD	YTD
State-Operated	385.6	385.6	13.1 days
Contracted Staff Secure	24.0	24.0	13.4 days
Total Detained	409.7	409.7	13.1 days

COMMITTED YOUTH	Average Daily Population (ADP)		Length of Stay (LOS)
	July 2008	YTD	YTD
State Secure	458.0	458.0	
Private Secure/Staff Supervised	619.6	619.6	
Community Residential	140.1	140.1	
Other Residential**	28.5	28.5	
Total Committed Residential	1,246.1	1,246.1	17.4 months
<i>Committed Residential w/o Boulder</i>	<i>1,238.5</i>	<i>1,238.5</i>	

PAROLED YOUTH	Average Daily Population (ADP)		Length of Stay (LOS)
	July 2008	YTD	YTD
Total Paroled	444.8	444.8	6.8 months

TOTAL STATEWIDE ADP	July 2008	YTD
	2,100.6	2,100.6



*Due to rounding, totals shown may not be an exact sum of the subtotals

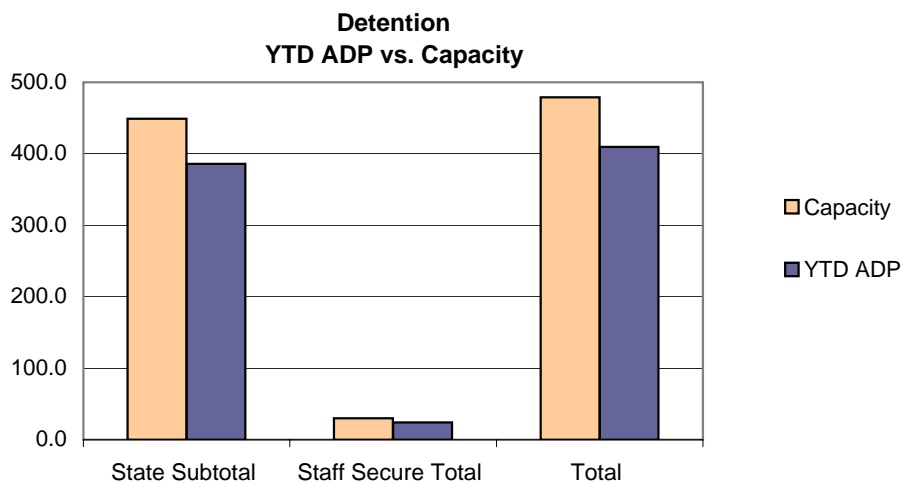
**Includes Group Homes, Job Corps, Hospitals, Mental Health Institutes, Shelter Care, etc.

July 2008 DYC Population Report

II. Detention Program Services Continued

Facility	Operating Capacity	Average Daily Population			New Admissions		YTD LOS in Days
		July 2008	YTD	YTD % of Capacity	July 2008	YTD	LOS
<i>State Operated Detention</i>							
Adams	29	28.6	28.6	98.7%	72	72	11.3
Gilliam	73	69.6	69.6	95.3%	99	99	18.5
Grand Mesa	24	18.8	18.8	78.5%	43	43	10.5
Marvin Foote	96	80.9	80.9	84.3%	188	188	12.3
Mount View	60	46.6	46.6	77.7%	88	88	15.5
Platte Valley	69	57.9	57.9	83.9%	146	146	10.7
Pueblo	40	35.6	35.6	89.0%	83	83	13.6
Spring Creek	58	47.6	47.6	82.1%	114	114	12.2
<i>State Subtotal</i>	<i>449</i>	<i>385.6</i>	<i>385.6</i>	<i>85.9%</i>	<i>833</i>	<i>833</i>	<i>13.1</i>
<i>Staff Secure Detention</i>							
Brown Center	2	1.6	1.6	81.0%	3	3	7.7
Hilltop	5	3.5	3.5	70.8%	6	6	11.8
Midway (Remington)	8	4.5	4.5	55.9%	16	16	12.0
Robert DeNier	9	9.3	9.3	103.8%	20	20	12.2
Youthtrack San Luis Valley	6	5.0	5.0	83.8%	9	9	18.5
<i>Staff Secure Total</i>	<i>30</i>	<i>24.0</i>	<i>24.0</i>	<i>80.0%</i>	<i>54</i>	<i>54</i>	<i>13.4</i>
TOTAL	479	409.7	409.7	85.5%	887	887	13.1

*Prowers officially closed Jan 31, 2008 at 11:59:59 pm; the one bed went to Pueblo YSC



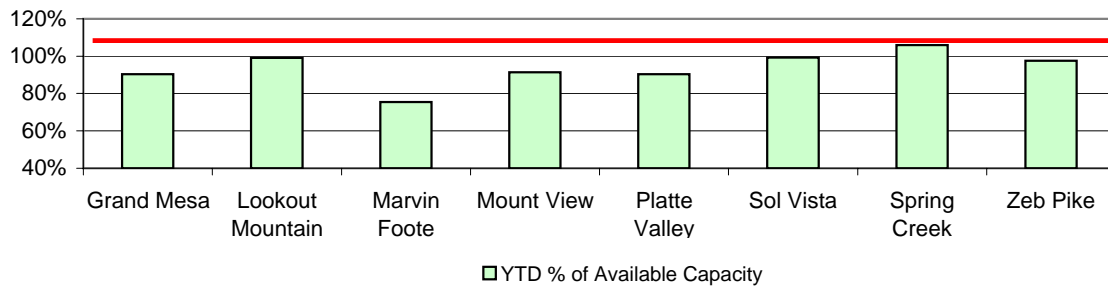
July 2008 DYC Population Report

III. Commitment Services

A. State and Contract Secure ADP by Facility

Facility	Operational Capacity (YTD)	July 2008	YTD	YTD % of Operational Capacity	YTD % of Current Available Capacity
State Secure					
Adams	0	0.3	0.3	N/A	N/A
Gilliam	0	0.8	0.8	N/A	N/A
Grand Mesa	44	39.8	39.8	90.4%	90.4%
Lookout	168.0	166.6	166.6	99.2%	99.2%
Marvin Foote	22	16.6	16.6	75.4%	75.4%
Mount View	73	66.7	66.7	91.3%	91.3%
Platte Valley	66	59.7	59.7	90.4%	90.4%
Pueblo	0	1.1	1.1	N/A	N/A
Sol Vista	20	19.9	19.9	99.4%	99.4%
Spring Creek	45	47.7	47.7	105.9%	105.9%
Zeb Pike	40	39.0	39.0	97.6%	97.6%
<i>State Subtotal</i>	<i>478.0</i>	<i>458.0</i>	<i>458.0</i>	<i>95.8%</i>	<i>95.8%</i>
Contract Secure/Staff Supervised					
Alternative Homes For Youth - Greeley		8.5	8.5		
Betty K. Marler Center		40.5	40.5		
Brown Center		0.5	0.5		
Childrens Ark		7.8	7.8		
Devereux Cleo Wallace		20.0	20.0		
El Pueblo Ranch		4.0	4.0		
Gateway Residential Program		2.3	2.3		
Griffith Center, Grand Ave Girls (WR)		3.9	3.9		
Hand Up Homes for Youth - West		2.0	2.0		
Hilltop (Residential Youth Services)		11.8	11.8		
Jefferson Hills		41.4	41.4		
Jefferson Hills Aurora		35.2	35.2		
Kidz Ark Sterling		3.2	3.2		
Mountain Star Center		3.7	3.7		
Ridge View		402.1	402.1		
Robert DeNier		15.7	15.7		
Southern Peaks		15.3	15.3		
Third Way Center - Lowry		0.8	0.8		
Youth Villages		1.0	1.0		
<i>Contract Secure Subtotal</i>		<i>619.6</i>	<i>619.6</i>		

**State Secure Commitment
Percent of Available Capacity by Facility**



July 2008

DYC Population Report

III. Commitment Services Continued

B. Community/Other Residential APD by Facility, ADP by Region

<u>Facility</u>	<u>July 2008</u>	<u>YTD</u>
Community		
Ariel Clinical Services	0.8	0.8
Community Corrections and Work Release	1.0	1.0
Dale House Project	10.4	10.4
Daybreak & Daybreak Princeton	5.0	5.0
Denver Area Youth Services (DAYS)	5.9	5.9
Gateway Youth and Family Services	2.0	2.0
Griffith Centers (SR)	8.0	8.0
Job Corps	0.7	0.7
Kidz Ark New Raymer Ranch	0.5	0.5
Lost and Found Inc., Arvada	9.6	9.6
Lost and Found Inc., Morrison	1.9	1.9
Marilee Center	2.4	2.4
Mesa County Community Corrections	1.0	1.0
Mt Evans Qualifying House	9.2	9.2
Reflections For Youth Inc., Prairie View	1.0	1.0
Reflections For Youth Inc., Wilderness	1.0	1.0
Southwest Colorado Community Corrections	1.0	1.0
Summit Treatment Service, Inc	16.1	16.1
Synergy Administration	5.0	5.0
Third Way Center	0.7	0.7
Third Way Center, Pontiac	5.8	5.8
Third Way Center, York	2.3	2.3
Third Way Center, Lincoln	4.2	4.2
Turning Point Center (Boys Residential)	14.9	14.9
Turning Point, Mathews St.	7.4	7.4
Youthtrack, Jeffco	3.3	3.3
Youthtrack, San Luis Valley	1.9	1.9
Youthtrack, Work and Learn	9.4	9.4
Youth Ventures	9.5	9.5
<i>Community Subtotal</i>	<i>140.1</i>	<i>140.1</i>
<i>Private Contract Total</i>	<i>759.7</i>	<i>759.7</i>
<i>Other Residential*</i>	<i>28.5</i>	<i>28.5</i>
RESIDENTIAL TOTAL	1,246.1	1,246.1

ADP by Region

<u>Region</u>	<u>July 2008</u>	<u>YTD</u>
Central	511.7	511.7
Northeast	352.6	352.6
Southern	256.6	256.6
Western	125.3	125.3
Total	1246.1	1246.1

*Includes Group Homes, Job Corps, Hospitals, Mental Health Institutes, Shelter Care, etc.

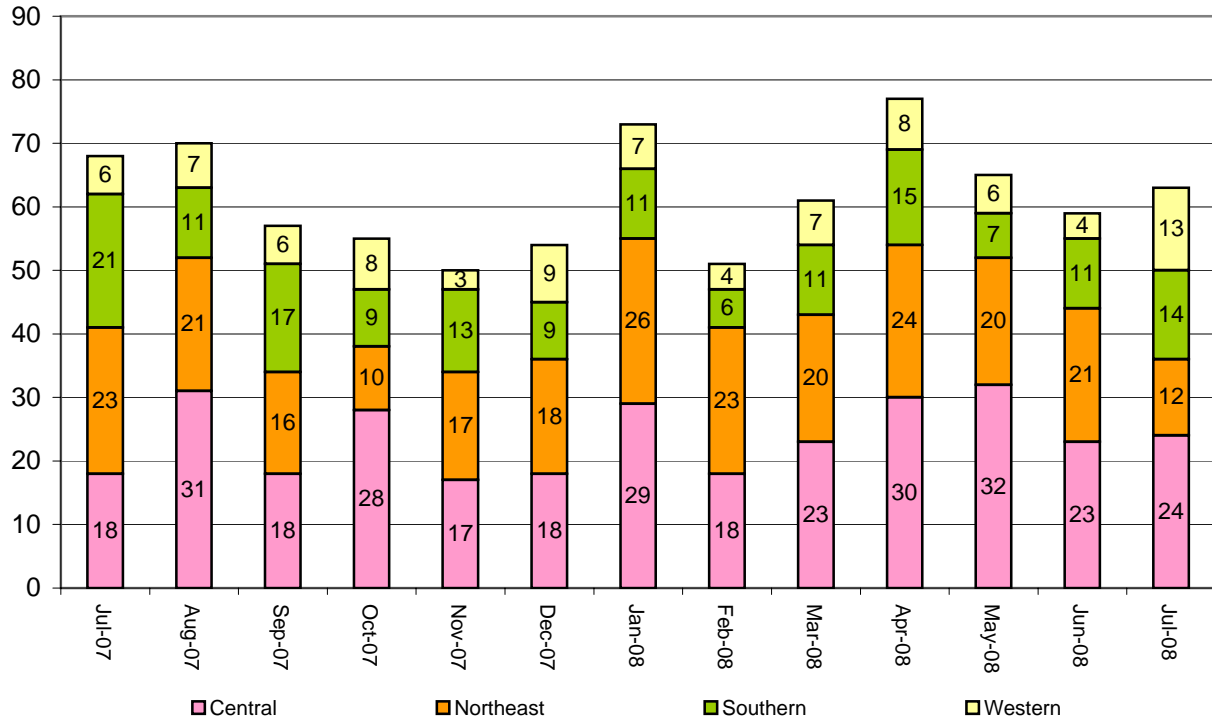
July 2008 DYC Population Report

IV. New Commitments

New Commitments by Region

	<u>July 2008</u>	<u>YTD</u>	<u>July 2007</u>	<u>Last YTD</u>
Central Region	24	24	18	18
Northeast Region	12	12	23	23
Southern Region	14	14	21	21
Western Region	13	13	6	6
New Commitment Total	63	63	68	68

Monthly New Commitments



July 2008 DYC Population Report

V. Parole Services

Parole ADP by Region

	<u>July 2008</u>	<u>YTD</u>	<u>Last YTD</u>
Central Region	187.5	187.5	194.5
Northeast Region	120.5	120.5	127.4
Southern Region	95.3	95.3	87.8
Western Region	41.5	41.5	69.4
Parole Total	444.8	444.8	479.1

Parole Intakes

Parole Discharges

Parole LOS

	<u>July 2008</u>	<u>YTD</u>	<u>July 2008</u>	<u>YTD</u>	<u>YTD</u>
Central Region	29	29	27	27	7.1
Northeast Region	21	21	22	22	6.3
Southern Region	12	12	8	8	8.3
Western Region	9	9	7	7	6.0
Parole Total	71	71	64	64	6.8

Monthly Parole ADP

