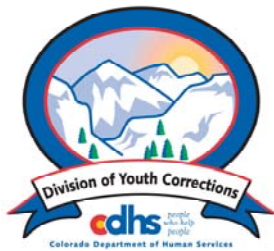


JUNE 2008 MONTHLY POPULATION REPORT

Prepared by the Division of Youth Corrections Research and Evaluation Unit July 15, 2008



Colorado Department of Human Services
Division of Youth Corrections

Working with Colorado Communities to Achieve Justice

June 2008

DYC Population Report

I.	Summary Population Data	1
II.	Detention ADP by Facility	2
III.	Commitment Services	
	A. State and Contract Secure ADP by Facility	3
	B. Community/Other Residential ADP by Facility	4
IV.	New Commitments	5
V.	Parole Services	6

June 2008 DYC Population Report

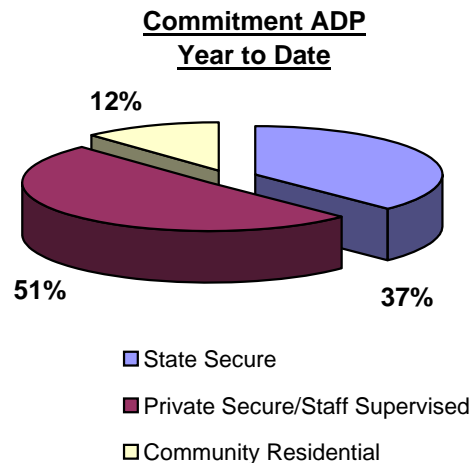
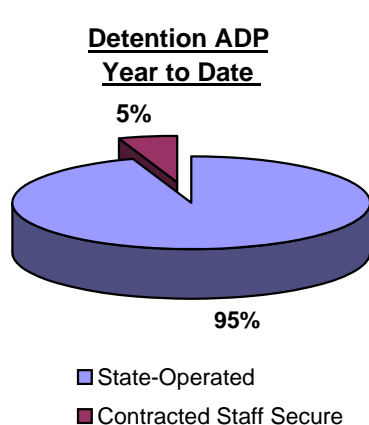
I. Summary Population Data*

DETAINED YOUTH	Average Daily Population (ADP)		Length of Stay (LOS)
	June 2008	YTD	YTD
State-Operated	395.1	387.0	13.7 days
Contracted Staff Secure	20.3	21.7	13.3 days
Total Detained	415.4	408.6	13.7 days

COMMITTED YOUTH	Average Daily Population (ADP)		Length of Stay (LOS)
	June 2008	YTD	YTD
State Secure	479.0	473.1	
Private Secure/Staff Supervised	625.9	641.9	
Community Residential	133.2	149.4	
Other Residential**	26.7	23.1	
Total Committed Residential	1,264.7	1,287.4	18.4 months
<i>Committed Residential w/o Boulder</i>	<i>1,257.7</i>	<i>1,281.1</i>	

PAROLED YOUTH	Average Daily Population (ADP)		Length of Stay (LOS)
	June 2008	YTD	YTD
Total Paroled	455.8	509.3	6.7 months

TOTAL STATEWIDE ADP	June 2008	YTD
	2,136.0	2,205.3



*Due to rounding, totals shown may not be an exact sum of the subtotals

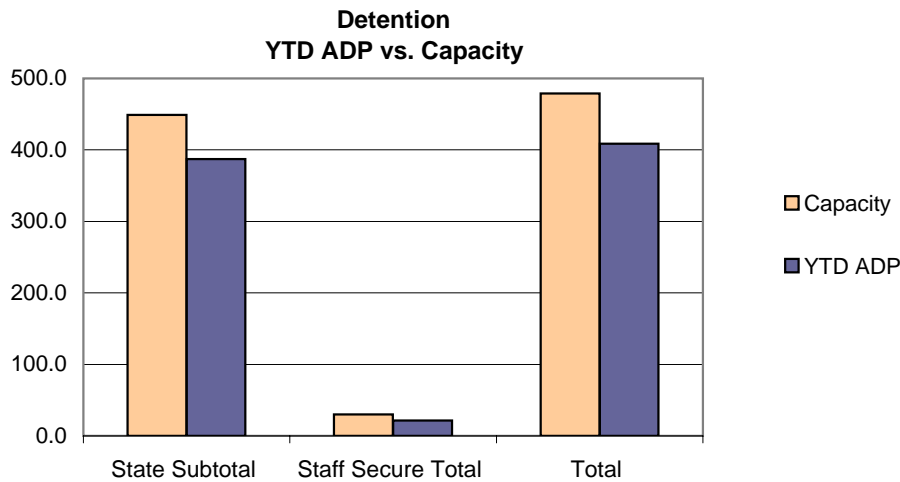
**Includes Group Homes, Job Corps, Hospitals, Mental Health Institutes, Shelter Care, etc.

June 2008 DYC Population Report

II. Detention ADP by Facility

Facility	Operating Capacity	Average Daily Population		YTD % of Capacity	New Admissions		YTD LOS in Days
		June 2008	YTD		June 2008	YTD	LOS
<i>State Operated Detention</i>							
Adams	29	27.9	25.8	88.9%	81	843	11.1
Gilliam	73	70.9	69.2	94.8%	108	1,377	17.9
Grand Mesa	24	19.7	18.8	78.5%	36	481	14.1
Marvin Foote	96	82.8	84.2	87.7%	142	1,911	16.2
Mount View	60	45.3	46.3	77.2%	92	1,154	14.3
Platte Valley	69	60.6	63.0	91.3%	156	1,845	12.3
Pueblo	40	37.3	34.0	85.1%	105	1,072	11.7
Spring Creek	58	50.7	45.6	78.6%	115	1,509	10.9
<i>State Subtotal</i>	<i>449</i>	<i>395.1</i>	<i>387.0</i>	<i>86.2%</i>	<i>835</i>	<i>10,192</i>	<i>13.7</i>
<i>Staff Secure Detention</i>							
Brown Center	2	0.2	1.3	65.0%	1	21	21.3
Hilltop	5	1.7	2.8	55.0%	6	75	15.7
Midway (Remington)	8	5.7	5.9	73.6%	17	227	9.6
Prowers*	0	0.0	0.1	14.0%	0	4	12.9
Robert DeNier	9	8.5	7.8	87.0%	17	175	15.9
Youthtrack San Luis Valley	6	4.2	3.7	62.3%	8	101	13.5
<i>Staff Secure Total</i>	<i>30</i>	<i>20.3</i>	<i>21.7</i>	<i>72.2%</i>	<i>49</i>	<i>603</i>	<i>13.3</i>
TOTAL	479	415.4	408.6	85.3%	884	10,795	13.7

*Prowers officially closed Jan 31, 2008 at 11:59:59 pm; the one bed went to Pueblo YSC



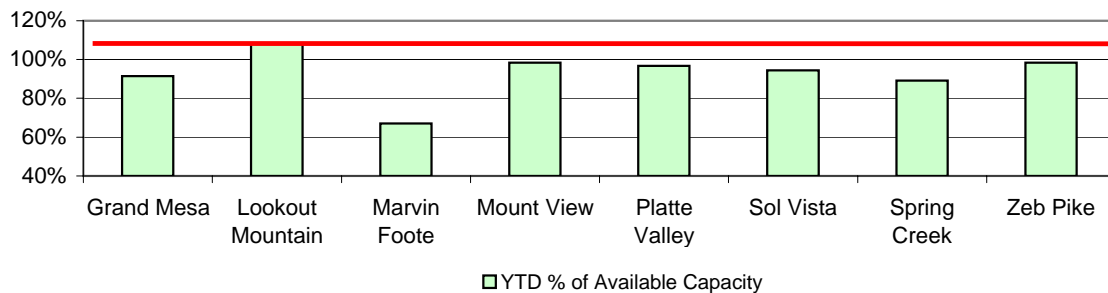
June 2008 DYC Population Report

III. Commitment Services

A. State and Contract Secure ADP by Facility

Facility	Operational Capacity (YTD)	June 2008	YTD	YTD % of Operational Capacity	YTD % of Current Available Capacity
State Secure					
Adams	0	0.6	0.3	N/A	N/A
Gilliam	0	1.7	1.0	N/A	N/A
Grand Mesa	44	42.0	40.2	91.4%	91.4%
Lookout	187.7	167.4	182.1	97.0%	108.4%
Marvin Foote	22	19.3	14.7	67.0%	67.0%
Mount View	73	68.4	71.9	98.4%	98.4%
Platte Valley	66	79.3	63.9	96.7%	96.7%
Pueblo	0	0.7	0.7	N/A	N/A
Sol Vista	20	19.7	18.9	94.5%	94.5%
Spring Creek	45	41.1	40.1	89.1%	89.1%
Zeb Pike	40	39.0	39.3	98.4%	98.4%
<i>State Subtotal</i>	<i>497.7</i>	<i>479.0</i>	<i>473.1</i>	<i>95.0%</i>	<i>99.0%</i>
Contract Secure/Staff Supervised					
Alternative Homes For Youth - Greeley		6.6	7.4		
Betty K. Marler Center		40.8	39.8		
Brown Center		1.8	2.6		
Cedar Springs		0.0	0.5		
Childrens Ark		5.9	6.3		
Devereux Cleo Wallace		17.9	19.6		
El Pueblo Ranch		3.6	3.2		
Excelsior Youth Center		0.0	0.2		
Gateway Residential Program		2.3	0.7		
Glen Mills Schools		0.0	0.7		
Griffith Center (SR)		0.0	1.6		
Griffith Center, Grand Ave Girls (WR)		3.6	4.9		
Hand Up Homes for Youth - West		2.0	1.7		
Hilltop (Residential Youth Services)		12.0	11.2		
Jefferson Hills		40.4	40.4		
Jefferson Hills Aurora		40.4	55.4		
Kidz Ark Sterling		4.0	2.2		
Mountain Star Center		3.9	3.6		
Ridge View		410.5	407.5		
Robert DeNier		14.7	14.1		
Southern Peaks		15.0	17.9		
Third Way Center - Lowry		0.7	0.7		
<i>Contract Secure Subtotal</i>		<i>625.9</i>	<i>641.9</i>		

**State Secure Commitment
Percent of Available Capacity by Facility**



June 2008

DYC Population Report

III. Commitment Services Continued

B. Community/Other Residential APD by Facility, ADP by Region

<u>Facility</u>	<u>June 2008</u>	<u>YTD</u>
Community		
Ariel Clinical Services	0.9	1.0
Boulder Community Treatment Center	0.0	0.1
Dale House Project	9.1	10.0
Daybreak & Daybreak Princeton	3.8	4.5
Denver Area Youth Services (DAYS)	6.7	6.0
Foster Family Home Care (SR)	0.3	2.2
Gateway Youth and Family Services	2.0	0.7
Griffith Centers (SR)	9.2	13.3
Griffith Centers for Children, Inc. - Chins Up	0.0	0.2
Job Corps	1.8	1.4
Kidz Ark New Raymer Ranch	0.0	0.6
Longmont Community Treatment Center	0.0	0.2
Lost and Found Inc., Arvada	8.5	8.6
Lost and Found Inc., Morrison	2.7	5.0
Maple Star Colorado	0.6	1.2
Marilee Center	2.4	5.5
Mesa County Community Corrections	0.6	2.3
Mt Evans Qualifying House	9.0	7.8
Reflections For Youth Inc., Prairie View	1.2	1.9
Reflections For Youth Inc., Wilderness	1.0	0.6
ROP - Canyon State Academy	0.0	0.5
Southwest Colorado Community Corrections	0.2	0.0
Summit Treatment Service, Inc	13.0	4.5
Synergy Administration	5.0	5.2
Third Way Center	0.0	1.7
Third Way Center, Pontiac	4.5	3.8
Third Way Center, York	4.5	4.8
Third Way Center, Lincoln	4.6	3.6
Touchton Foster Home (Boulder County)	0.0	0.2
Turning Point Center For Youth and Family Development	0.0	2.1
Turning Point Center (Boys Residential)	14.3	14.7
Turning Point, Mathews St.	5.3	6.5
Youthtrack, Jeffco	3.1	5.8
Youthtrack, San Luis Valley	2.2	2.8
Youthtrack, Work and Learn	7.0	8.9
Youth Ventures	10.5	12.7
<i>Community Subtotal</i>	<i>133.2</i>	<i>149.4</i>
<i>Private Contract Total</i>	<i>759.0</i>	<i>791.2</i>
<i>Other Residential*</i>	<i>26.7</i>	<i>23.1</i>
RESIDENTIAL TOTAL	1,264.7	1,287.4

ADP by Region

<u>Region</u>	<u>June 2008</u>	<u>YTD</u>
Central	529.8	538.7
Northeast	355.7	348.8
Southern	256.7	280.2
Western	122.5	119.8
Total	1264.7	1287.4

*Includes Group Homes, Job Corps, Hospitals, Mental Health Institutes, Shelter Care, etc.

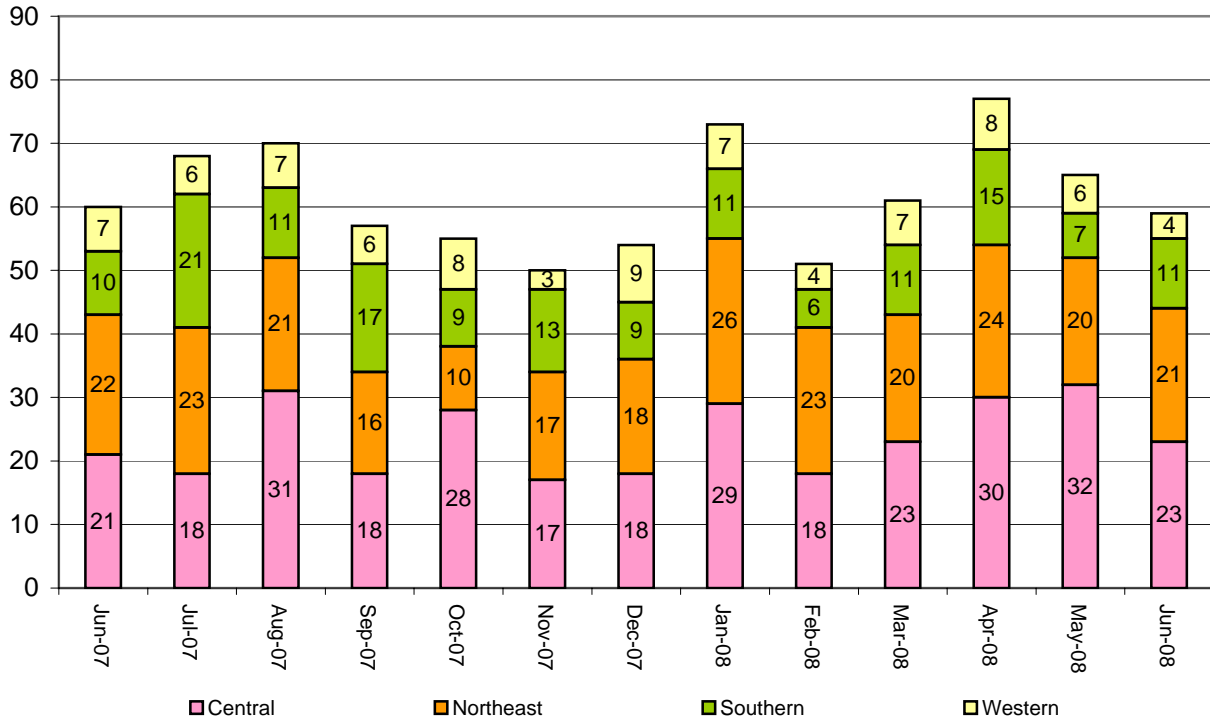
June 2008 DYC Population Report

IV. New Commitments

New Commitments by Region

	<u>June 2008</u>	<u>YTD</u>	<u>June 2007</u>	<u>Last YTD</u>
Central Region	23	325	21	310
Northeast Region	21	245	22	243
Southern Region	11	146	10	177
Western Region	4	77	7	93
New Commitment Total	59	793	60	823

Monthly New Commitments



June 2008 DYC Population Report

V. Parole Services

Parole ADP by Region

	<u>June 2008</u>	<u>YTD</u>	<u>Last YTD</u>
Central Region	193.8	215.1	224.4
Northeast Region	124.1	137.5	143.3
Southern Region	97.0	105.9	91.9
Western Region	41.0	50.9	62.1
Parole Total	455.8	509.3	521.7

Parole Intakes

Parole Discharges

Parole LOS

	<u>June 2008</u>		<u>YTD</u>		<u>YTD</u>
Central Region	35	369	44	394	6.4
Northeast Region	21	248	19	246	6.8
Southern Region	12	187	14	175	7.0
Western Region	5	74	5	105	6.5
Parole Total	73	878	82	920	6.7

Monthly Parole ADP

