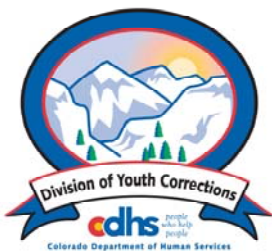


MAY 2008 MONTHLY POPULATION REPORT

Prepared by the Division of Youth Corrections Research and Evaluation Unit June 18, 2008



Colorado Department of Human Services
Division of Youth Corrections

Working with Colorado Communities to Achieve Justice

May 2008

DYC Population Report

I.	Summary Population Data	1
II.	Detention ADP by Facility	2
III.	Commitment Services	
	A. State and Contract Secure ADP by Facility	3
	B. Community/Other Residential ADP by Facility	4
IV.	New Commitments	5
V.	Parole Services	6

May 2008 DYC Population Report

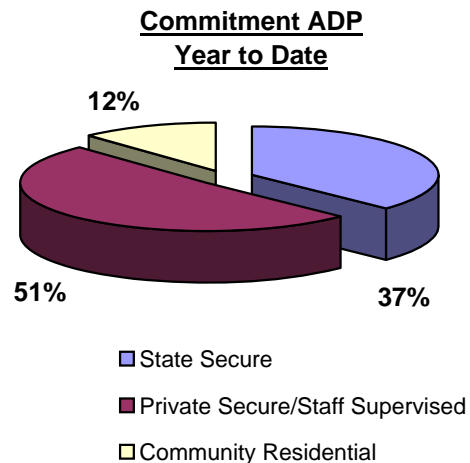
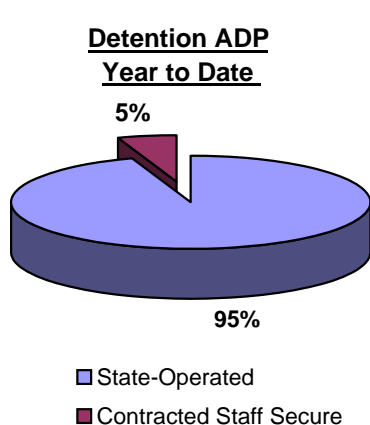
I. Summary Population Data*

DETAINED YOUTH	Average Daily Population (ADP)		Length of Stay (LOS)
	May 2008	YTD	YTD
State-Operated	393.4	386.3	13.7 days
Contracted Staff Secure	19.3	21.8	13.3 days
Total Detained	412.7	408.1	13.7 days

COMMITTED YOUTH	Average Daily Population (ADP)		Length of Stay (LOS)
	May 2008	YTD	YTD
State Secure	477.3	473.1	
Private Secure/Staff Supervised	629.1	643.2	
Community Residential	141.1	151.0	
Other Residential**	30.1	22.0	
Total Committed Residential	1,277.6	1,289.3	18.4 months
<i>Committed Residential w/o Boulder</i>	<i>1,270.6</i>	<i>1,283.0</i>	

PAROLED YOUTH	Average Daily Population (ADP)		Length of Stay (LOS)
	May 2008	YTD	YTD
Total Paroled	485.9	514.5	6.6 months

TOTAL STATEWIDE ADP	May 2008	YTD
	2,176.2	2,211.9



*Due to rounding, totals shown may not be an exact sum of the subtotals

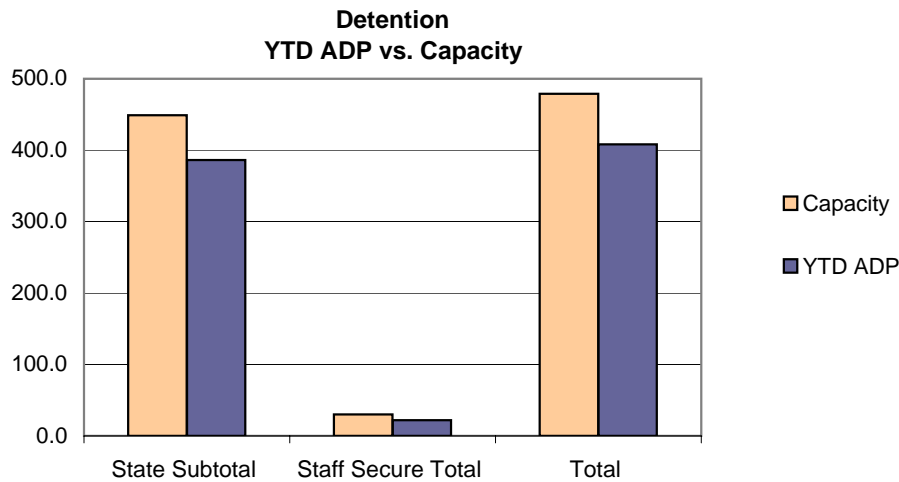
**Includes Group Homes, Job Corps, Hospitals, Mental Health Institutes, Shelter Care, etc.

May 2008 DYC Population Report

II. Detention Program Services Continued

Facility	Operating Capacity	Average Daily Population			New Admissions		YTD LOS in Days
		May 2008	YTD	YTD % of Capacity	May 2008	YTD	LOS
<i>State Operated Detention</i>							
Adams	29	28.0	25.6	88.2%	70	762	11.0
Gilliam	73	71.3	69.0	94.5%	119	1,269	17.9
Grand Mesa	24	15.3	18.8	78.2%	50	445	14.3
Marvin Foote	96	85.5	84.5	88.0%	169	1,770	16.1
Mount View	60	51.5	46.4	77.4%	102	1,062	14.4
Platte Valley	69	59.1	63.2	91.6%	153	1,689	12.2
Pueblo	40	34.1	33.7	84.3%	83	967	11.6
Spring Creek	58	48.7	45.1	77.8%	146	1,394	10.8
<i>State Subtotal</i>	<i>449</i>	<i>393.4</i>	<i>386.3</i>	<i>86.0%</i>	<i>892</i>	<i>9,358</i>	<i>13.7</i>
<i>Staff Secure Detention</i>							
Brown Center	2	0.8	1.4	69.5%	1	20	21.9
Hilltop	5	2.4	2.9	57.0%	7	69	15.3
Midway (Remington)	8	3.6	5.9	73.9%	21	209	9.7
Prowers*	0	0.0	0.2	15.0%	0	4	12.9
Robert DeNier	9	7.7	7.8	86.3%	12	158	16.1
Youthtrack San Luis Valley	6	4.7	3.7	61.5%	10	93	12.9
<i>Staff Secure Total</i>	<i>30</i>	<i>19.3</i>	<i>21.8</i>	<i>72.5%</i>	<i>51</i>	<i>553</i>	<i>13.3</i>
TOTAL	479	412.7	408.1	85.2%	943	9,911	13.7

*Prowers officially closed Jan 31, 2008 at 11:59:59 pm; the one bed went to Pueblo YSC



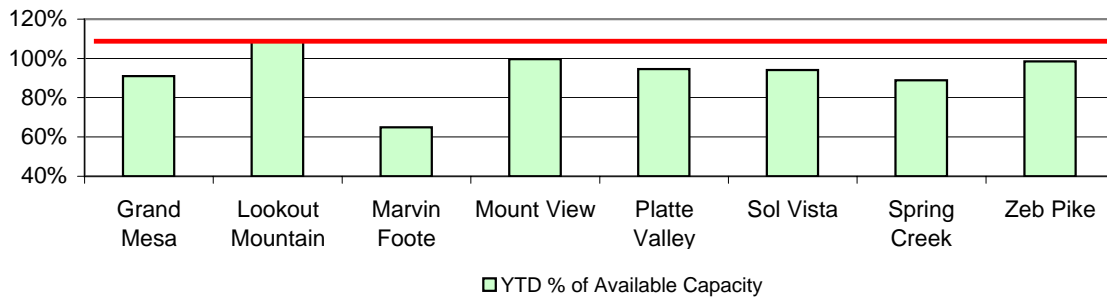
May 2008 DYC Population Report

III. Commitment Services

A. State and Contract Secure ADP by Facility

Facility	<u>Operational Capacity</u> (YTD)	May 2008	YTD	<u>YTD % of</u> <u>Operational</u> <u>Capacity</u>	<u>YTD % of Current</u> <u>Available Capacity</u>
State Secure					
Adams	0	0.3	0.3	N/A	N/A
Gilliam	0	2.3	0.9	N/A	N/A
Grand Mesa	44	42.4	40.1	91.0%	91.0%
Lookout	189.5	167.5	183.4	96.8%	109.2%
Marvin Foote	22	19.8	14.3	64.9%	64.9%
Mount View	73	68.6	72.7	99.6%	99.6%
Platte Valley	66	75.0	62.5	94.6%	94.6%
Pueblo	0	1.0	0.8	N/A	N/A
Sol Vista	20	20.0	18.8	94.1%	94.1%
Spring Creek	45	39.9	40.0	88.9%	88.9%
Zeb Pike	40	40.5	39.4	98.5%	98.5%
<i>State Subtotal</i>	<i>499.5</i>	<i>477.3</i>	<i>473.1</i>	<i>94.7%</i>	<i>99.0%</i>
Contract Secure/Staff Supervised					
Alternative Homes For Youth - Greeley		6.0	7.5		
Betty K. Marler Center		40.9	39.7		
Brown Center		2.5	2.7		
Cedar Springs		0.0	0.5		
Childrens Ark		5.8	6.3		
Devereux Cleo Wallace		14.7	19.8		
El Pueblo Ranch		2.9	3.1		
Excelsior Youth Center		0.0	0.2		
Gateway Residential Program		2.0	0.5		
Glen Mills Schools		0.0	0.8		
Griffith Center (SR)		0.0	1.7		
Griffith Center, Grand Ave Girls (WR)		2.6	5.0		
Hand Up Homes for Youth - West		2.0	1.7		
Hilltop (Residential Youth Services)		11.1	11.0		
Jefferson Hills		44.5	40.4		
Jefferson Hills Aurora		44.1	56.7		
Kidz Ark Sterling		3.1	2.0		
Mountain Star Center		3.3	3.6		
Ridge View		413.0	407.2		
Robert DeNier		13.9	14.0		
Southern Peaks		16.1	18.2		
Third Way Center - Lowry		0.6	0.7		
<i>Contract Secure Subtotal</i>		<i>629.1</i>	<i>643.2</i>		

**State Secure Commitment
Percent of Available Capacity by Facility**



May 2008

DYC Population Report

III. Commitment Services Continued

B. Community/Other Residential APD by Facility, ADP by Region

<u>Facility</u>	<u>May 2008</u>	<u>YTD</u>
Community		
Ariel Clinical Services	1.6	1.0
Boulder Community Treatment Center	0.0	0.1
Dale House Project	10.4	10.1
Daybreak & Daybreak Princeton	4.9	4.5
Denver Area Youth Services (DAYS)	4.0	5.9
Gateway Youth and Family Services	1.9	0.6
Griffith Centers (SR)	11.4	13.7
Griffith Centers for Children, Inc. - Chins Up	0.0	0.2
Job Corps	1.7	1.4
Kids Crossing	0.0	0.2
Kidz Ark New Raymer Ranch	0.0	0.6
Longmont Community Treatment Center	0.0	0.2
Lost and Found Inc., Arvada	9.5	8.6
Lost and Found Inc., Morrison	3.5	5.2
Maple Star Colorado	1.0	1.2
Marilee Center	3.2	5.7
Mesa County Community Corrections	2.5	2.5
Mt Evans Qualifying House	7.6	7.6
Reflections For Youth Inc., Prairie View	2.0	1.9
Reflections For Youth Inc., Wilderness	1.0	0.6
ROP - Canyon State Academy	0.0	0.5
Summit Treatment Service, Inc	11.5	3.7
Synergy Administration	4.1	5.2
Third Way Center	0.4	1.9
Third Way Center, Pontiac	6.0	4.0
Third Way Center, York	5.0	4.9
Third Way Center, Lincoln	2.5	3.2
Touchton Foster Home (Boulder County)	0.0	0.2
Turning Point Center For Youth and Family Development	0.0	2.3
Turning Point Center (Boys Residential)	14.8	14.7
Turning Point, Mathews St.	6.7	6.6
Youthtrack, Jeffco	4.5	6.0
Youthtrack, San Luis Valley	2.5	2.9
Youthtrack, Work and Learn	5.9	9.1
Youth Ventures	12.7	15.2
<i>Community Subtotal</i>	<i>141.1</i>	<i>151.0</i>
<i>Private Contract Total</i>	<i>770.2</i>	<i>794.2</i>
<i>Other Residential*</i>	<i>30.1</i>	<i>22.0</i>
RESIDENTIAL TOTAL	1,277.6	1,289.3

ADP by Region

<u>Region</u>	<u>May 2008</u>	<u>YTD</u>
Central	528.7	536.2
Northeast	357.6	348.1
Southern	265.3	283.2
Western	126.0	121.8
Total	1277.6	1289.3

*Includes Group Homes, Job Corps, Hospitals, Mental Health Institutes, Shelter Care, etc.

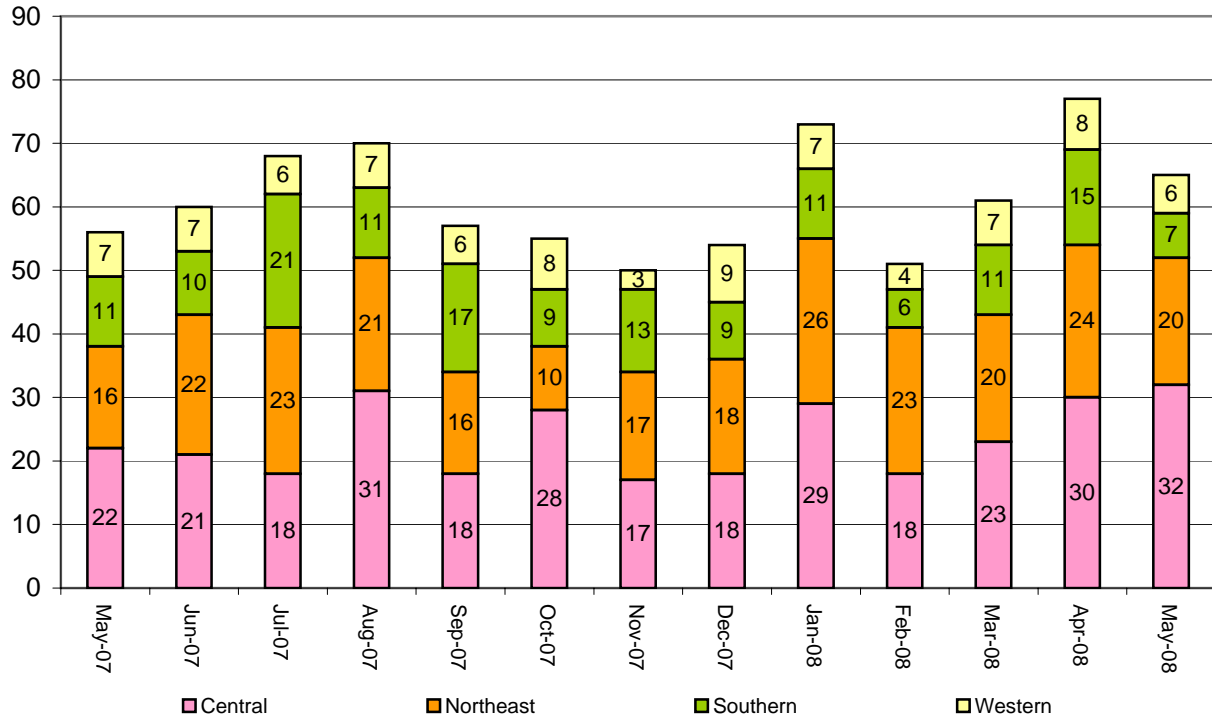
May 2008 DYC Population Report

IV. New Commitments

New Commitments by Region

	<u>May 2008</u>	<u>YTD</u>	<u>May 2007</u>	<u>Last YTD</u>
Central Region	32	299	22	289
Northeast Region	20	222	16	220
Southern Region	7	134	11	167
Western Region	6	73	7	86
New Commitment Total	65	728	56	762

Monthly New Commitments



May 2008 DYC Population Report

V. Parole Services

Parole ADP by Region

	<u>May 2008</u>	<u>YTD</u>	<u>Last YTD</u>
Central Region	207.6	216.0	227.5
Northeast Region	129.1	138.9	143.6
Southern Region	104.1	106.9	93.3
Western Region	45.1	52.8	60.5
Parole Total	485.9	514.5	524.9

Parole Intakes

Parole Discharges

Parole LOS

	<u>May 2008</u>	<u>YTD</u>	<u>May 2008</u>	<u>YTD</u>	<u>YTD</u>
Central Region	24	334	29	349	6.4
Northeast Region	19	227	15	223	7.0
Southern Region	12	176	19	161	6.8
Western Region	8	69	7	100	6.5
Parole Total	63	806	70	833	6.6

Monthly Parole ADP

