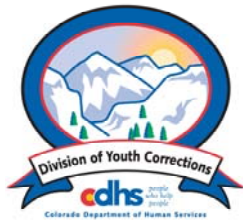


APRIL 2008 MONTHLY POPULATION REPORT

Prepared by the Division of Youth Corrections Research and Evaluation Unit May 19, 2008



Colorado Department of Human Services
Division of Youth Corrections

Working with Colorado Communities to Achieve Justice

April 2008

DYC Population Report

I.	Summary Population Data	1
II.	Detention ADP by Facility	2
III.	Commitment Services	
	A. State and Contract Secure ADP by Facility	3
	B. Community/Other Residential ADP by Facility	4
IV.	New Commitments	5
V.	Parole Services	6

April 2008 DYC Population Report

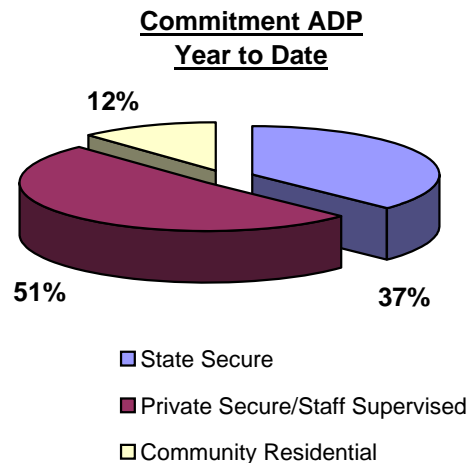
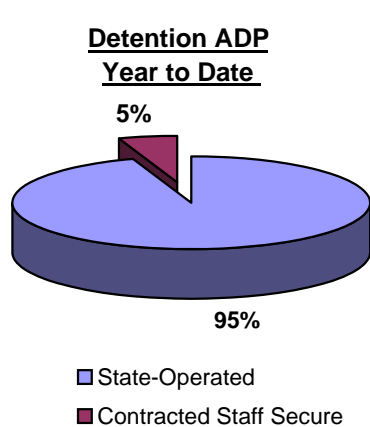
I. Summary Population Data*

DETAINED YOUTH	Average Daily Population (ADP)		Length of Stay (LOS)
	April 2008	YTD	YTD
State-Operated	405.2	386.5	13.8 days
Contracted Staff Secure	23.6	22.0	13.8 days
Total Detained	428.8	408.5	13.8 days

COMMITTED YOUTH	Average Daily Population (ADP)		Length of Stay (LOS)
	April 2008	YTD	YTD
State Secure	466.4	472.8	
Private Secure/Staff Supervised	624.8	644.5	
Community Residential	151.0	151.9	
Other Residential**	23.2	20.6	
Total Committed Residential	1,265.4	1,289.8	18.2 months
<i>Committed Residential w/o Boulder</i>	<i>1,260.2</i>	<i>1,283.6</i>	

PAROLED YOUTH	Average Daily Population (ADP)		Length of Stay (LOS)
	April 2008	YTD	YTD
Total Paroled	483.8	515.2	6.7 months

TOTAL STATEWIDE ADP	April 2008	YTD
	2,178.1	2,213.6



*Due to rounding, totals shown may not be an exact sum of the subtotals

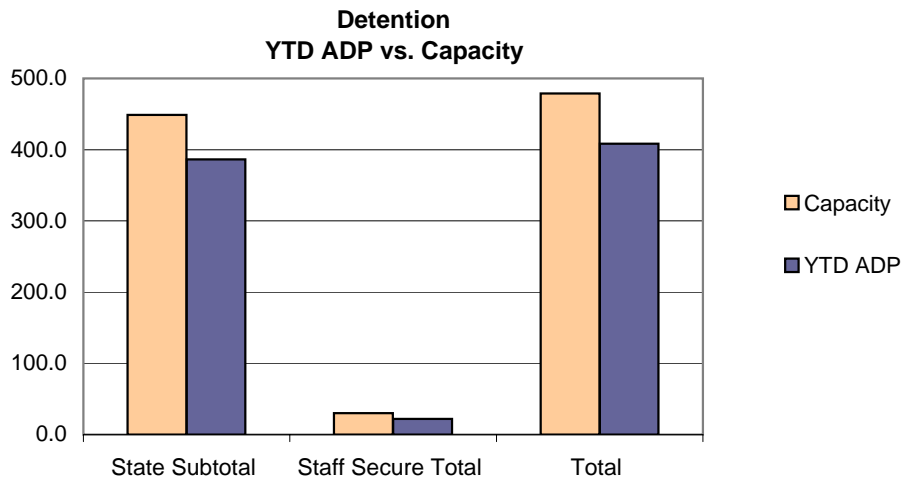
**Includes Group Homes, Job Corps, Hospitals, Mental Health Institutes, Shelter Care, etc.

April 2008 DYC Population Report

II. Detention Data by Facility

Facility	Operating Capacity	Average Daily Population		YTD % of Capacity	New Admissions		YTD LOS in Days
		April 2008	YTD		April 2008	YTD	
<i>State Operated Detention</i>							
Adams	29	27.5	25.3	87.4%	72	691	11.1
Gilliam	73	73.1	68.6	94.0%	140	1,150	17.9
Grand Mesa	24	17.8	19.1	79.6%	37	395	14.5
Marvin Foote	96	88.8	84.3	87.9%	145	1,601	16.0
Mount View	60	51.1	46.1	76.8%	125	962	14.6
Platte Valley	69	61.3	63.9	92.7%	157	1,536	12.3
Pueblo	40	32.6	33.7	84.2%	87	884	11.8
Spring Creek	58	53.1	45.4	78.2%	134	1,248	10.9
<i>State Subtotal</i>	<i>449</i>	<i>405.2</i>	<i>386.5</i>	<i>86.1%</i>	<i>897</i>	<i>8,467</i>	<i>13.8</i>
<i>Staff Secure Detention</i>							
Brown Center	2	1.7	1.5	72.8%	1	19	21.9
Hilltop	5	2.5	2.9	57.8%	9	62	16.3
Midway (Remington)	8	6.6	6.1	76.8%	15	188	10.1
Prowers*	0	0.0	0.2	16.9%	0	4	12.9
Robert DeNier	9	8.3	7.8	86.4%	18	146	16.7
Youthtrack San Luis Valley	6	4.5	3.6	59.8%	10	83	13.4
<i>Staff Secure Total</i>	<i>30</i>	<i>23.6</i>	<i>22.0</i>	<i>73.4%</i>	<i>53</i>	<i>502</i>	<i>13.8</i>
TOTAL	479	428.8	408.5	85.3%	950	8,969	13.8

*Prowers officially closed Jan 31, 2008 at 11:59:59 pm; the one bed went to Pueblo YSC



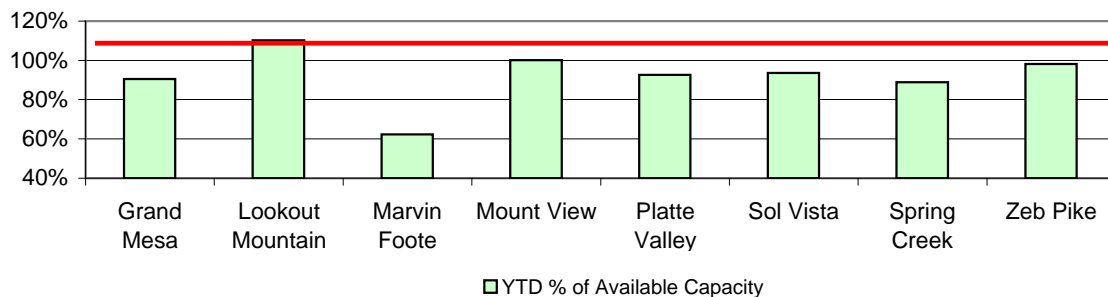
April 2008 DYC Population Report

III. Commitment Services

A. State and Contract Secure ADP by Facility

Facility	<u>Operational Capacity</u> (YTD)	<u>April 2008</u>	<u>YTD</u>	<u>YTD % of</u> <u>Capacity</u>	<u>YTD % of Available</u> <u>Capacity</u>
State Secure					
Adams	0	0.7	0.3	N/A	N/A
Gilliam	0	1.1	0.9	N/A	N/A
Grand Mesa	44	40.0	39.8	90.5%	90.5%
Lookout	191.6	165.9	185.1	96.6%	110.2%
Marvin Foote	22	15.1	13.7	62.3%	62.3%
Mount View	73	72.8	73.1	100.2%	100.2%
Platte Valley	66	71.1	61.1	92.6%	92.6%
Pueblo	0	0.7	0.7	N/A	N/A
Sol Vista	20	19.1	18.7	93.7%	93.7%
Spring Creek	45	40.4	40.0	88.9%	88.9%
Zeb Pike	40	39.5	39.3	98.2%	98.2%
<i>State Subtotal</i>	<i>501.8</i>	<i>466.4</i>	<i>472.8</i>	<i>94.2%</i>	<i>98.9%</i>
Contract Secure/Staff Supervised					
Alternative Homes For Youth - Greeley		5.0	7.6		
Betty K. Marler Center		40.8	39.6		
Brown Center		2.4	2.7		
Cedar Springs		0.0	0.6		
Childrens Ark		5.2	6.3		
Devereux Cleo Wallace		13.8	20.3		
El Pueblo Ranch		2.0	3.1		
Excelsior Youth Center		0.0	0.2		
Gateway Residential Program		2.0	0.4		
Glen Mills Schools		0.0	0.9		
Griffith Center (SR)		0.0	1.9		
Griffith Center, Grand Ave Girls (WR)		4.7	5.2		
Hand Up Homes for Youth - West		2.0	1.6		
Hilltop (Residential Youth Services)		11.2	10.8		
Jefferson Hills		43.0	40.0		
Jefferson Hills Aurora		46.5	58.0		
Kidz Ark Sterling		1.6	1.9		
Mountain Star Center		3.0	3.6		
Ridge View		411.6	406.7		
Robert DeNier		13.0	14.0		
Southern Peaks		17.2	18.4		
Third Way Center - Lowry		0.0	0.7		
<i>Contract Secure Subtotal</i>		<i>624.8</i>	<i>644.5</i>		

**State Secure Commitment
Percent of Available Capacity by Facility**



April 2008

DYC Population Report

III. Commitment Services Continued

B. Community/Other Residential APD by Facility, ADP by Region

<u>Facility</u>	<u>April 2008</u>	<u>YTD</u>
Community		
Ariel Clinical Services	2.0	1.0
Boulder Community Treatment Center	0.0	0.1
Dale House Project	10.9	10.1
Daybreak & Daybreak Princeton	6.0	4.5
Denver Area Youth Services (DAYS)	4.2	6.1
Gateway Youth and Family Services	2.0	0.4
Griffith Centers (SR)	11.2	13.9
Griffith Centers for Children, Inc. - Chins Up	0.0	0.2
Job Corps	2.0	1.3
Kidz Ark New Raymer Ranch	0.0	0.7
Longmont Community Treatment Center	0.0	0.2
Lost and Found Inc., Arvada	10.4	8.5
Lost and Found Inc., Morrison	4.0	5.4
Maple Star Colorado	1.0	1.3
Marilee Center	3.0	6.0
Mesa County Community Corrections	3.8	2.4
Mt Evans Qualifying House	5.6	7.7
Reflections For Youth Inc., Prairie View	2.0	1.9
Reflections For Youth Inc., Wilderness	1.0	0.5
ROP - Canyon State Academy	0.0	0.6
Summit Treatment Service, Inc	11.6	2.9
Synergy Administration	5.0	5.3
Third Way Center	1.0	2.0
Third Way Center, Pontiac	4.0	3.5
Third Way Center, York	6.1	5.1
Third Way Center, Lincoln	3.6	3.3
Touchton Foster Home (Boulder County)	0.0	0.3
Turning Point Center For Youth and Family Development	0.0	2.5
Turning Point Center (Boys Residential)	14.0	14.7
Turning Point, Mathews St.	6.5	6.5
Youthtrack, Jeffco	5.5	6.2
Youthtrack, San Luis Valley	3.0	2.9
Youthtrack, Work and Learn	7.9	9.4
Youth Ventures	15.8	15.6
<i>Community Subtotal</i>	<i>151.0</i>	<i>151.9</i>
<i>Private Contract Total</i>	<i>775.8</i>	<i>796.4</i>
<i>Other Residential*</i>	<i>23.2</i>	<i>20.6</i>
RESIDENTIAL TOTAL	1,265.4	1,289.8

ADP by Region

<u>Region</u>	<u>April 2008</u>	<u>YTD</u>
Central	517.3	536.7
Northeast	355.7	347.0
Southern	269.2	284.1
Western	123.2	122.0
Total	1265.4	1289.8

*Includes Group Homes, Job Corps, Hospitals, Mental Health Institutes, Shelter Care, etc.

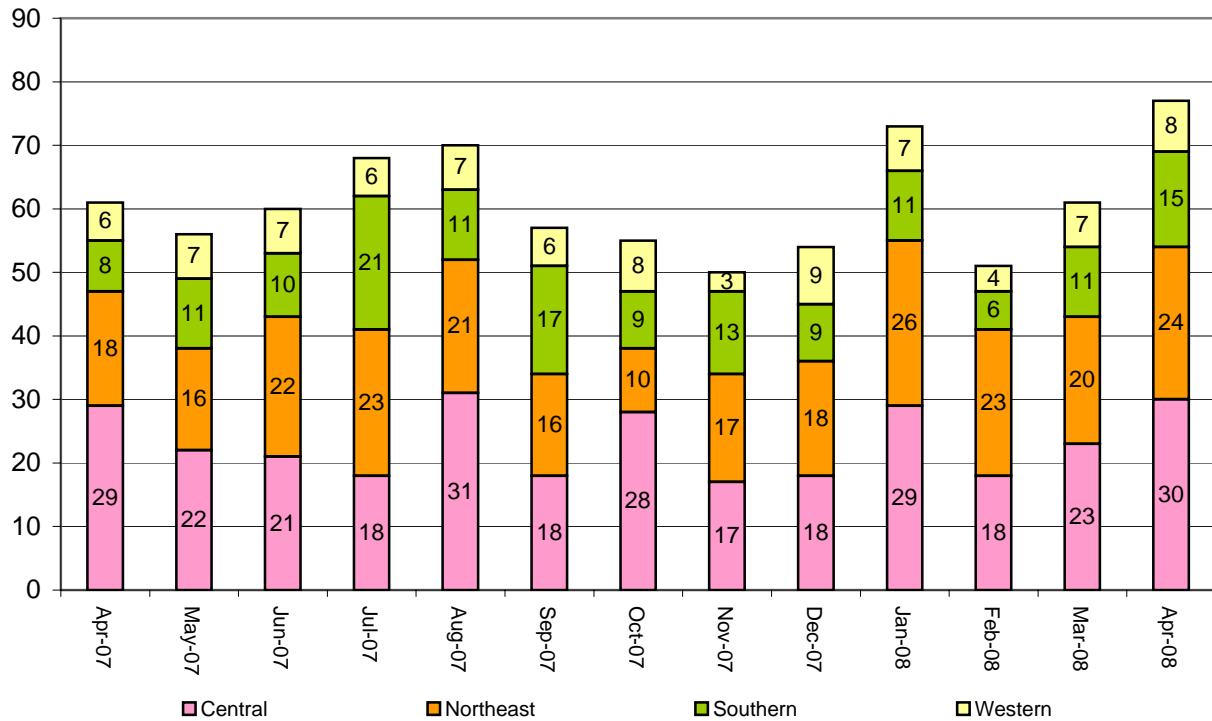
April 2008 DYC Population Report

IV. New Commitments

New Commitments by Region

	<u>April 2008</u>	<u>YTD</u>	<u>April 2007</u>	<u>Last YTD</u>
Central Region	30	258	29	266
Northeast Region	24	202	18	204
Southern Region	15	127	8	156
Western Region	8	67	6	79
New Commitment Total	77	654	61	705

Monthly New Commitments



April 2008 DYC Population Report

V. Parole Services

Parole ADP by Region

	<u>April 2008</u>	<u>YTD</u>	<u>Last YTD</u>
Central Region	209.5	218.1	229.9
Northeast Region	128.7	140.1	144.1
Southern Region	106.3	106.5	94.9
Western Region	39.4	50.5	59.8
Parole Total	483.8	515.2	528.6

Parole Intakes

Parole Discharges

Parole LOS

	<u>April 2008</u>		<u>YTD</u>		<u>YTD</u>
Central Region	27	310	23	319	6.4
Northeast Region	16	207	16	203	7.0
Southern Region	17	163	15	136	6.8
Western Region	3	61	7	93	6.7
Parole Total	63	741	61	751	6.7

Monthly Parole ADP

