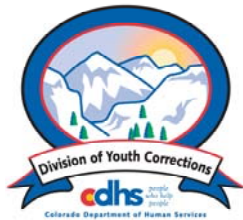


# MARCH 2008 MONTHLY POPULATION REPORT

---

Prepared by the Division of Youth Corrections Research and Evaluation Unit April 16, 2008



**Colorado Department of Human Services**  
**Division of Youth Corrections**

---

Working with Colorado Communities to Achieve Justice

# March 2008

## DYC Population Report

<b>I.</b>	<b>Summary Population Data</b>	<b>1</b>
<b>II.</b>	<b>Detention ADP by Facility</b>	<b>2</b>
<b>III.</b>	<b>Commitment Services</b>	
	A. State and Contract Secure ADP by Facility	<b>3</b>
	B. Community/Other Residential ADP by Facility	<b>4</b>
<b>IV.</b>	<b>New Commitments</b>	<b>5</b>
<b>V.</b>	<b>Parole Services</b>	<b>6</b>

# March 2008 DYC Population Report

## I. Summary Population Data\*

<b>DETAINED YOUTH</b>	<b>Average Daily Population (ADP)</b>		<b>Length of Stay (LOS)</b>
	<b>March 2008</b>	<b>YTD</b>	<b>YTD</b>
State-Operated	397.4	385.0	13.8 days
Contracted Staff Secure	23.2	22.1	13.3 days
<b>Total Detained</b>	<b>420.6</b>	<b>407.1</b>	<b>13.8 days</b>

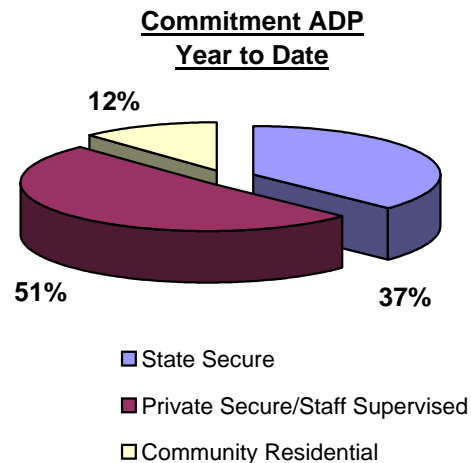
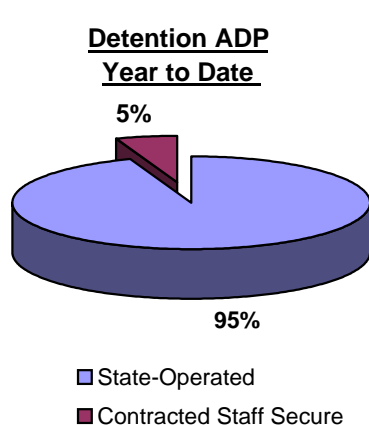
<b>COMMITTED YOUTH</b>	<b>Average Daily Population (ADP)</b>		<b>Length of Stay (LOS)</b>
	<b>March 2008</b>	<b>YTD</b>	<b>YTD</b>
State Secure	455.9	473.4	
Private Secure/Staff Supervised	630.0	646.5	
Community Residential	151.1	151.8	
Other Residential**	24.0	20.0	
<b>Total Committed Residential</b>	<b>1,261.0</b>	<b>1,291.7</b>	<b>18.3 months</b>
<i>Committed Residential w/o Boulder</i>	<i>1,256.4</i>	<i>1,285.4</i>	

<b>PAROLED YOUTH</b>	<b>Average Daily Population (ADP)</b>		<b>Length of Stay (LOS)</b>
	<b>March 2008</b>	<b>YTD</b>	<b>YTD</b>
<b>Total Paroled</b>	<b>494.1</b>	<b>518.7</b>	<b>6.7 months</b>

<b>TOTAL STATEWIDE ADP</b>	<b>2,175.7</b>	<b>2,217.5</b>
----------------------------	----------------	----------------



\*Due to rounding, totals shown may not be an exact sum of the subtotals

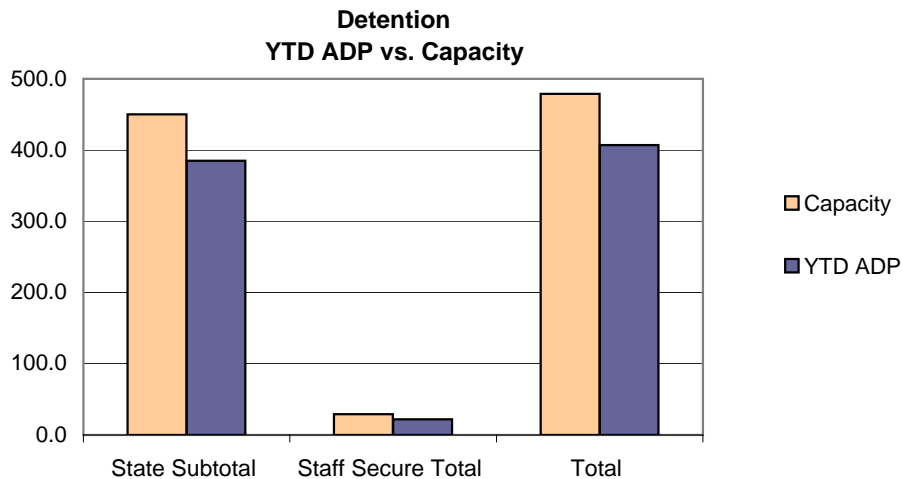
\*\*Includes Group Homes, Job Corps, Hospitals, Mental Health Institutes, Shelter Care, etc.

# March 2008 DYC Population Report

## II. Detention ADP by Facility

Facility	Operating Capacity	Average Daily Population			New Admissions		YTD LOS in Days
		March 2008	YTD	YTD % of Capacity	March 2008	YTD	LOS
<i>State Operated Detention</i>							
Adams	29	27.5	25.1	86.6%	63	619	11.0
Gilliam	73	70.4	68.1	93.4%	148	1,010	18.2
Grand Mesa	24	18.1	19.3	80.2%	45	358	14.5
Marvin Foote	96	85.2	83.9	87.4%	166	1,457	16.0
Mount View	60	48.1	45.8	76.4%	99	838	14.7
Platte Valley	69	66.1	64.2	93.1%	151	1,379	12.5
Pueblo	41	33.1	33.8	82.4%	97	797	11.6
Spring Creek	58	49.0	44.7	77.1%	124	1,114	10.9
<i>State Subtotal</i>	<i>450</i>	<i>397.4</i>	<i>385.0</i>	<i>85.6%</i>	<i>893</i>	<i>7,572</i>	<i>13.8</i>
<i>Staff Secure Detention</i>							
Brown Center	2	2.0	1.4	71.7%	1	18	19.5
Hilltop	5	1.5	2.9	58.7%	6	53	17.5
Midway (Remington)	8	5.8	6.1	76.1%	16	173	9.6
Prowers*	0	0.0	0.2	18.8%	0	4	12.9
Robert DeNier	9	10.3	8.0	88.4%	13	130	15.5
Youthtrack San Luis Valley	5	3.5	3.5	69.7%	6	73	13.3
<i>Staff Secure Total</i>	<i>29</i>	<i>23.2</i>	<i>22.1</i>	<i>76.1%</i>	<i>42</i>	<i>451</i>	<i>13.3</i>
<b>TOTAL</b>	<b>479</b>	<b>420.6</b>	<b>407.1</b>	<b>85.0%</b>	<b>935</b>	<b>8,023</b>	<b>13.8</b>

\*Prowers officially closed Jan 31, 2008 at 11:59:59 pm; the one bed went to Pueblo YSC



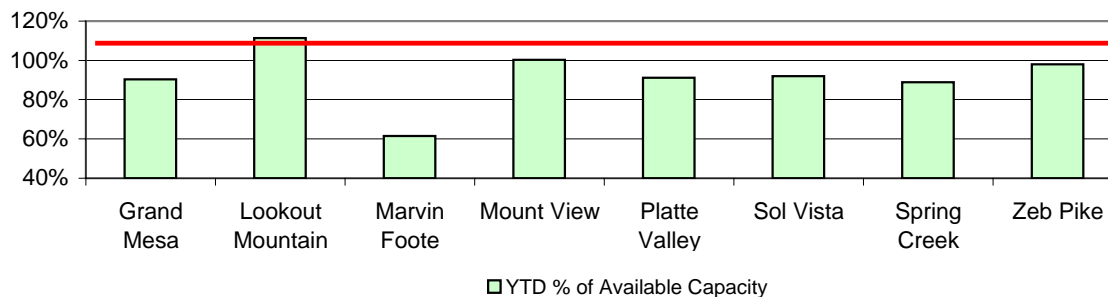
# March 2008 DYC Population Report

## III. Commitment Services

### A. State and Contract Secure ADP by Facility

Facility	Operational Capacity (YTD)	March 2008	YTD	YTD % of Capacity	YTD % of Available Capacity
<b>State Secure</b>					
Adams	0	0.4	0.3	N/A	N/A
Gilliam	0	1.2	0.9	N/A	N/A
Grand Mesa	44	35.8	39.8	90.4%	90.4%
Lookout	194.2	167.0	187.2	96.4%	111.4%
Marvin Foote	22	15.3	13.5	61.5%	61.5%
Mount View	73	72.7	73.2	100.2%	100.2%
Platte Valley	66	69.4	60.2	91.2%	91.2%
Pueblo	0	0.4	0.7	N/A	N/A
Sol Vista	20	15.9	18.4	92.0%	92.0%
Spring Creek	45	38.2	40.0	88.9%	88.9%
Zeb Pike	40	39.5	39.2	98.1%	98.1%
<i>State Subtotal</i>	<i>504.3</i>	<i>455.9</i>	<i>473.4</i>	<i>93.9%</i>	<i>99.0%</i>
<b>Contract Secure/Staff Supervised</b>					
Alternative Homes For Youth - Greeley		5.8	7.9		
Betty K. Marler Center		40.7	39.4		
Brown Center		2.7	2.8		
Cedar Springs		0.0	0.6		
Childrens Ark		5.1	6.5		
Devereux Cleo Wallace		17.8	21.0		
El Pueblo Ranch		1.9	3.3		
Excelsior Youth Center		0.0	0.2		
Gateway Residential Program		1.7	0.2		
Glen Mills Schools		0.6	1.0		
Griffith Center (SR)		0.0	2.1		
Griffith Center, Grand Ave Girls (WR)		5.3	5.3		
Hand Up Homes for Youth - West		3.0	1.6		
Hilltop (Residential Youth Services )		9.9	10.9		
Jefferson Hills		41.9	39.7		
Jefferson Hills Aurora		51.9	59.2		
Kidz Ark Sterling		0.6	2.0		
Mountain Star Center		3.0	3.7		
Ridge View		409.9	406.2		
Robert DeNier		10.8	13.9		
Southern Peaks		17.6	18.6		
Third Way Center - Lowry		0.0	0.8		
<i>Contract Secure Subtotal</i>		<i>630.0</i>	<i>646.5</i>		

**State Secure Commitment  
Percent of Available Capacity by Facility**



# March 2008

## DYC Population Report

### III. Commitment Services Continued

#### B. Community/Other Residential APD by Facility, ADP by Region

<u>Facility</u>	<u>March 2008</u>	<u>YTD</u>
<b>Community</b>		
Ariel Clinical Services	2.5	0.9
Boulder Community Treatment Center	0.7	0.1
Dale House Project	10.4	10.0
Daybreak & Daybreak Princeton	5.0	4.3
Denver Area Youth Services (DAYS)	4.1	6.3
Gateway Youth and Family Services	1.7	0.3
Griffith Centers (SR)	11.1	14.2
Griffith Centers for Children, Inc. - Chins Up	0.8	0.2
Job Corps	2.0	1.3
Kidz Ark New Raymer Ranch	0.0	0.7
Longmont Community Treatment Center	0.0	0.3
Lost and Found Inc., Arvada	9.8	8.3
Lost and Found Inc., Morrison	5.0	5.5
Maple Star Colorado	1.0	1.3
Marilee Center	5.0	6.3
Mesa County Community Corrections	2.7	2.0
Mt Evans Qualifying House	8.6	7.9
Reflections For Youth Inc., Prairie View	1.1	1.9
Reflections For Youth Inc., Wilderness	1.0	0.5
ROP - Canyon State Academy	0.0	0.6
Summit Treatment Service, Inc	10.3	2.0
Synergy Administration	4.4	5.4
Third Way Center	1.0	2.1
Third Way Center, Pontiac	4.0	3.5
Third Way Center, York	6.4	5.0
Third Way Center, Lincoln	3.8	3.2
Touchton Foster Home (Boulder County)	0.0	0.3
Turning Point Center For Youth and Family Development	0.0	2.8
Turning Point Center (Boys Residential)	12.5	14.8
Turning Point, Mathews St.	5.4	6.5
Youthtrack, Jeffco	5.6	6.3
Youthtrack, San Luis Valley	3.0	2.9
Youthtrack, Work and Learn	9.6	9.6
Youth Ventures	15.9	15.6
<i>Community Subtotal</i>	<i>151.1</i>	<i>151.8</i>
<i>Private Contract Total</i>	<i>781.1</i>	<i>798.3</i>
<i>Other Residential*</i>	<i>24.0</i>	<i>20.0</i>
<b>RESIDENTIAL TOTAL</b>	<b>1,261.0</b>	<b>1,291.7</b>

#### ADP by Region

<u>Region</u>	<u>March 2008</u>	<u>YTD</u>
Central	516.2	537.5
Northeast	353.7	347.2
Southern	270.8	285.3
Western	120.2	121.7
<b>Total</b>	<b>1261.0</b>	<b>1291.7</b>

\*Includes Group Homes, Job Corps, Hospitals, Mental Health Institutes, Shelter Care, etc.

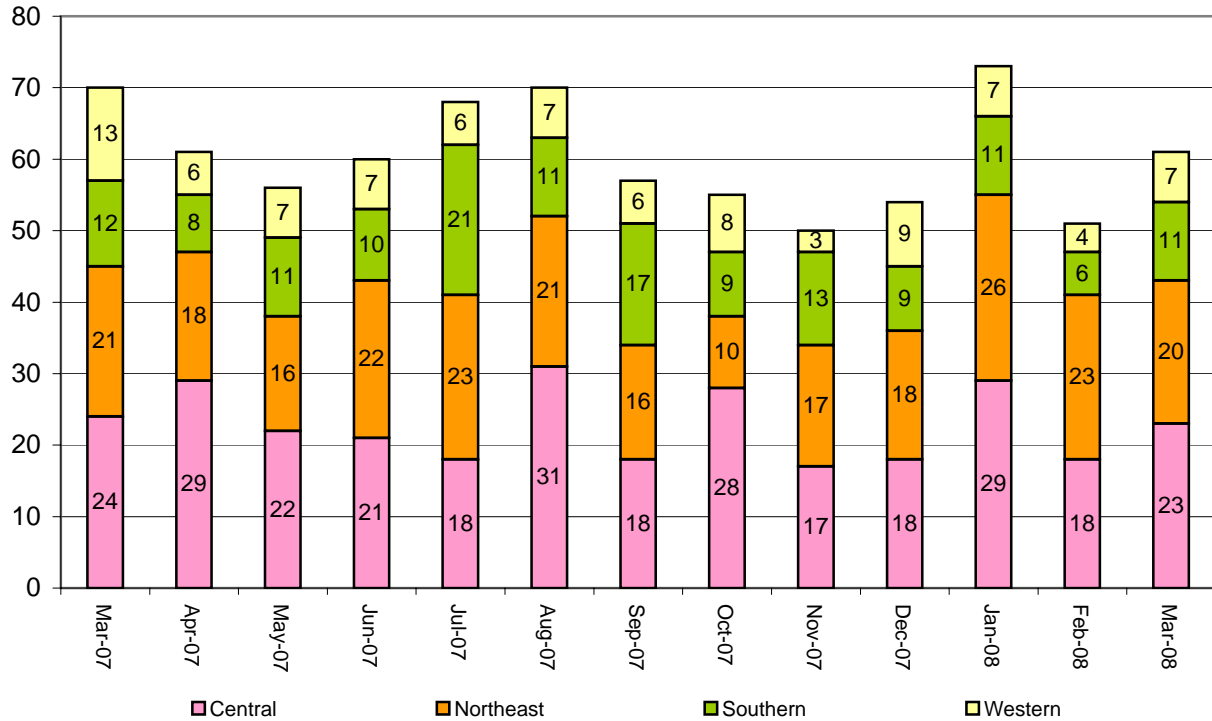
# March 2008 DYC Population Report

## IV. New Commitments

### New Commitments by Region

	<u>March 2008</u>	<u>YTD</u>	<u>March 2007</u>	<u>Last YTD</u>
Central Region	23	227	24	235
Northeast Region	20	177	21	186
Southern Region	11	112	12	147
Western Region	7	59	13	72
<b>New Commitment Total</b>	<b>61</b>	<b>575</b>	<b>70</b>	<b>640</b>

### Monthly New Commitments



# March 2008 DYC Population Report

## V. Parole Services

### Parole ADP by Region

	<u>March 2008</u>	<u>YTD</u>	<u>Last YTD</u>
Central Region	215.6	218.7	231.1
Northeast Region	127.7	141.9	146.0
Southern Region	108.2	106.3	97.2
Western Region	42.6	51.8	58.6
<b>Parole Total</b>	<b>494.1</b>	<b>518.7</b>	<b>533.0</b>

### Parole Intakes                      Parole Discharges                      Parole LOS

	<u>March 2008</u>		<u>YTD</u>		<u>YTD</u>
	<u>March 2008</u>	<u>YTD</u>	<u>March 2008</u>	<u>YTD</u>	<u>YTD</u>
Central Region	24	284	34	295	6.4
Northeast Region	22	191	24	183	7.1
Southern Region	15	145	21	121	6.8
Western Region	8	58	5	84	6.7
<b>Parole Total</b>	<b>69</b>	<b>678</b>	<b>84</b>	<b>683</b>	<b>6.7</b>

### Monthly Parole ADP

