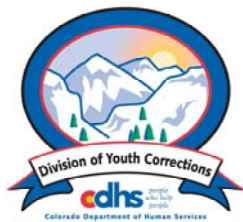


FEBRUARY 2008 MONTHLY POPULATION REPORT

Prepared by the Division of Youth Corrections Research and Evaluation Unit March 21, 2008



Colorado Department of Human Services
Division of Youth Corrections

Working with Colorado Communities to Achieve Justice

February 2008

DYC Population Report

| | | |
|-------------|--|----------|
| I. | Summary Population Data | 1 |
| II. | Detention ADP by Facility | 2 |
| III. | Commitment Services | |
| | A. State and Contract Secure ADP by Facility | 3 |
| | B. Community/Other Residential ADP by Facility | 4 |
| IV. | New Commitments | 5 |
| V. | Parole Services | 6 |

February 2008 DYC Population Report

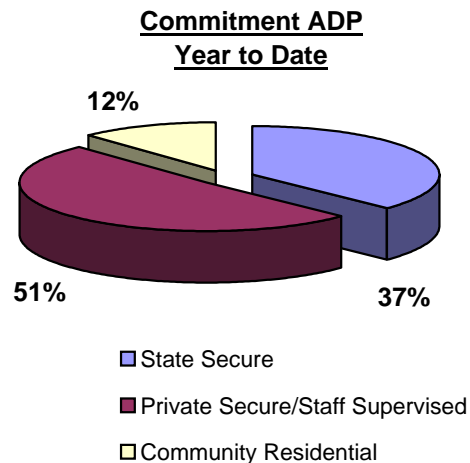
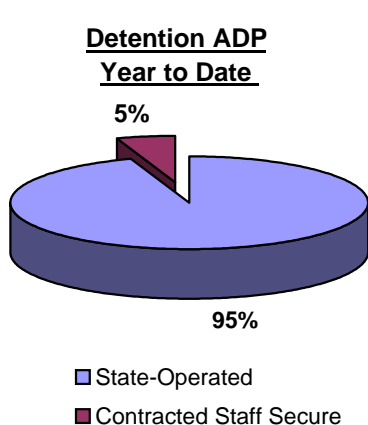
I. Summary Population Data*

| DETAINED YOUTH | Average Daily Population (ADP) | | Length of Stay (LOS) |
|-------------------------|--------------------------------|--------------|----------------------|
| | February 2008 | YTD | YTD |
| State-Operated | 397.7 | 383.5 | 13.9 days |
| Contracted Staff Secure | 21.0 | 21.6 | 13.1 days |
| Total Detained | 418.8 | 405.1 | 13.8 days |

| COMMITTED YOUTH | Average Daily Population (ADP) | | Length of Stay (LOS) |
|--|--------------------------------|----------------|----------------------|
| | February 2008 | YTD | YTD |
| State Secure | 457.4 | 475.6 | |
| Private Secure/Staff Supervised | 634.4 | 649.1 | |
| Community Residential | 142.1 | 151.7 | |
| Other Residential** | 19.9 | 19.3 | |
| Total Committed Residential | 1,253.8 | 1,295.7 | 18.0 months |
| <i>Committed Residential w/o Boulder</i> | <i>1,249.7</i> | <i>1,289.2</i> | |

| PAROLED YOUTH | Average Daily Population (ADP) | | Length of Stay (LOS) |
|----------------------|--------------------------------|--------------|----------------------|
| | February 2008 | YTD | YTD |
| Total Paroled | 526.4 | 521.2 | 6.7 months |

| TOTAL STATEWIDE ADP | February 2008 | YTD |
|---------------------|----------------|----------------|
| | 2,198.9 | 2,222.0 |



*Due to rounding, totals shown may not be an exact sum of the subtotals

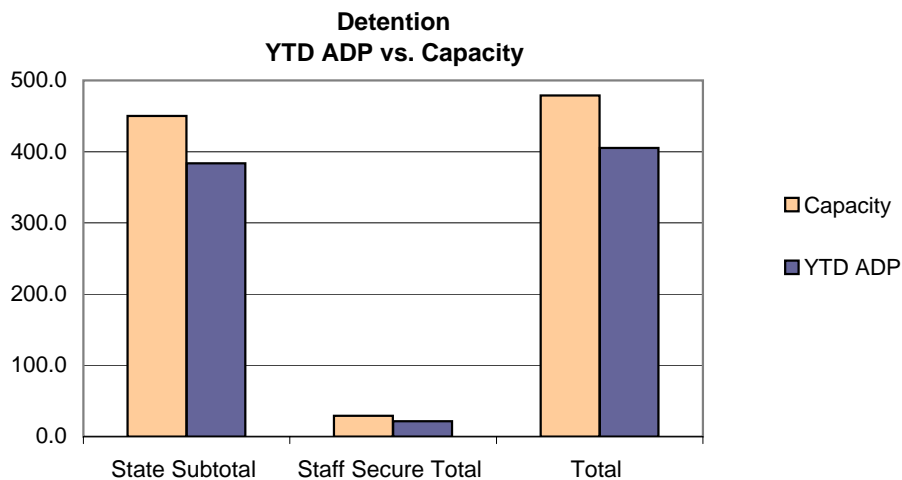
**Includes Group Homes, Job Corps, Hospitals, Mental Health Institutes, Shelter Care, etc.

February 2008 DYC Population Report

II. Detention ADP by Facility

| Facility | Operating Capacity | Average Daily Population | | | New Admissions | | YTD LOS in Days |
|---------------------------------|--------------------|--------------------------|--------------|-------------------|----------------|--------------|-----------------|
| | | February 2008 | YTD | YTD % of Capacity | February 2008 | YTD | LOS |
| <i>State Operated Detention</i> | | | | | | | |
| Adams | 29 | 23.9 | 24.8 | 85.5% | 75 | 557 | 10.8 |
| Gilliam | 73 | 71.4 | 67.8 | 92.8% | 110 | 862 | 18.9 |
| Grand Mesa | 24 | 17.4 | 19.4 | 80.8% | 38 | 313 | 14.7 |
| Marvin Foote | 96 | 89.2 | 83.9 | 87.4% | 157 | 1,291 | 15.9 |
| Mount View | 60 | 51.5 | 45.6 | 75.9% | 89 | 738 | 14.6 |
| Platte Valley | 69 | 63.5 | 64.0 | 92.8% | 163 | 1,228 | 12.2 |
| Pueblo | 41 | 32.8 | 33.9 | 82.7% | 76 | 701 | 12.0 |
| Spring Creek | 58 | 48.1 | 44.2 | 76.1% | 130 | 990 | 11.0 |
| <i>State Subtotal</i> | <i>450</i> | <i>397.7</i> | <i>383.5</i> | <i>85.2%</i> | <i>838</i> | <i>6,680</i> | <i>13.9</i> |
| <i>Staff Secure Detention</i> | | | | | | | |
| Brown Center | 2 | 1.9 | 1.4 | 68.1% | 3 | 17 | 18.5 |
| Hilltop | 5 | 1.7 | 3.1 | 62.3% | 7 | 47 | 18.9 |
| Midway (Remington) | 8 | 5.2 | 6.1 | 76.5% | 15 | 157 | 9.8 |
| Prowers* | 0 | 0.0 | 0.2 | 21.2% | 0 | 4 | 12.9 |
| Robert DeNier | 9 | 8.7 | 7.3 | 81.5% | 16 | 116 | 15.0 |
| Youthtrack San Luis Valley | 5 | 3.5 | 3.5 | 69.5% | 6 | 67 | 12.1 |
| <i>Staff Secure Total</i> | <i>29</i> | <i>21.0</i> | <i>21.6</i> | <i>74.5%</i> | <i>47</i> | <i>408</i> | <i>13.1</i> |
| TOTAL | 479 | 418.8 | 405.1 | 84.6% | 885 | 7,088 | 13.8 |

*Prowers officially closed Jan 31, 2008 at 11:59:59 pm; the one bed went to Pueblo YSC



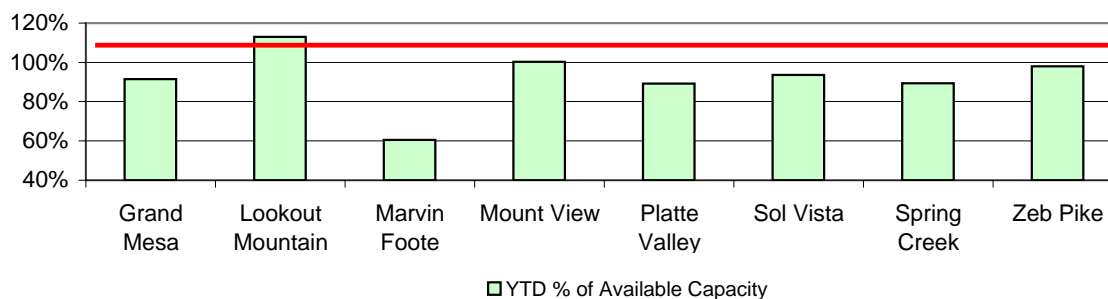
February 2008 DYC Population Report

III. Commitment Services

A. State and Contract Secure ADP by Facility

| Facility | Operational Capacity (YTD) | February 2008 | YTD | YTD % of Capacity | YTD % of Available Capacity |
|---|-------------------------------|------------------|--------------|----------------------|--------------------------------|
| State Secure | | | | | |
| Adams | 0 | 0.5 | 0.2 | N/A | N/A |
| Gilliam | 0 | 0.9 | 1.0 | N/A | N/A |
| Grand Mesa | 44 | 40.9 | 40.3 | 91.5% | 91.5% |
| Lookout | 197.5 | 163.6 | 189.8 | 96.1% | 113.0% |
| Marvin Foote | 22 | 17.7 | 13.3 | 60.5% | 60.5% |
| Mount View | 73 | 65.7 | 73.2 | 100.3% | 100.3% |
| Platte Valley | 66 | 66.9 | 58.9 | 89.2% | 89.2% |
| Pueblo | 0 | 1.5 | 0.8 | N/A | N/A |
| Sol Vista | 20 | 17.7 | 18.7 | 93.6% | 93.6% |
| Spring Creek | 45 | 42.8 | 40.2 | 89.4% | 89.4% |
| Zeb Pike | 40 | 39.2 | 39.2 | 98.0% | 98.0% |
| <i>State Subtotal</i> | <i>507.7</i> | <i>457.4</i> | <i>475.6</i> | <i>93.7%</i> | <i>99.5%</i> |
| Contract Secure/Staff Supervised | | | | | |
| Alternative Homes For Youth - Greeley | | 7.2 | 8.1 | | |
| Betty K. Marler Center | | 40.9 | 39.3 | | |
| Brown Center | | 2.0 | 2.8 | | |
| Cedar Springs | | 0.0 | 0.7 | | |
| Childrens Ark | | 4.6 | 6.6 | | |
| Devereux Cleo Wallace | | 19.4 | 21.4 | | |
| El Pueblo Ranch | | 1.1 | 3.5 | | |
| Excelsior Youth Center | | 0.0 | 0.2 | | |
| Gateway Residential Program | | 0.4 | 0.0 | | |
| Glen Mills Schools | | 1.0 | 1.0 | | |
| Griffith Center (SR) | | 0.5 | 2.4 | | |
| Griffith Center, Grand Ave Girls (WR) | | 6.0 | 5.3 | | |
| Hand Up Homes for Youth - West | | 3.0 | 1.4 | | |
| Hilltop (Residential Youth Services) | | 10.3 | 11.1 | | |
| Jefferson Hills | | 43.6 | 39.5 | | |
| Jefferson Hills Aurora | | 60.0 | 60.2 | | |
| Kidz Ark Sterling | | 1.0 | 2.1 | | |
| Mountain Star Center | | 3.6 | 3.8 | | |
| Ridge View | | 400.9 | 405.7 | | |
| Robert DeNier | | 11.8 | 14.6 | | |
| Southern Peaks | | 16.5 | 18.6 | | |
| Third Way Center - Lowry | | 0.7 | 0.9 | | |
| <i>Contract Secure Subtotal</i> | | <i>634.4</i> | <i>649.1</i> | | |

**State Secure Commitment
Percent of Available Capacity by Facility**



February 2008

DYC Population Report

III. Commitment Services Continued

B. Community/Other Residential APD by Facility, ADP by Region

| <u>Facility</u> | <u>February</u> <u>2008</u> | <u>YTD</u> |
|---|--------------------------------|----------------|
| Community | | |
| Ariel Clinical Services | 3.0 | 0.6 |
| Dale House Project | 9.4 | 10.0 |
| Daybreak & Daybreak Princeton | 4.7 | 4.3 |
| Denver Area Youth Services (DAYS) | 3.9 | 6.6 |
| Gateway Youth and Family Services | 0.7 | 0.1 |
| Griffith Centers (SR) | 11.7 | 14.6 |
| Griffith Centers for Children, Inc. - Chins Up | 1.0 | 0.1 |
| Job Corps | 2.1 | 1.2 |
| Kidz Ark New Raymer Ranch | 0.0 | 0.8 |
| Longmont Community Treatment Center | 0.0 | 0.3 |
| Lost and Found Inc., Arvada | 10.1 | 8.1 |
| Lost and Found Inc., Morrison | 5.2 | 5.6 |
| Maple Star Colorado | 1.0 | 1.3 |
| Marilee Center | 5.0 | 6.4 |
| Mesa County Community Corrections | 1.9 | 1.7 |
| Mt Evans Qualifying House | 11.3 | 7.8 |
| Reflections For Youth Inc., Prairie View | 1.8 | 2.0 |
| Reflections For Youth Inc., Wilderness | 1.0 | 0.4 |
| ROP - Canyon State Academy | 0.0 | 0.7 |
| Summit Treatment Service, Inc | 7.0 | 0.9 |
| Synergy Administration | 2.2 | 5.5 |
| Third Way Center | 2.0 | 2.3 |
| Third Way Center, Pontiac | 3.9 | 3.4 |
| Third Way Center, York | 5.4 | 4.8 |
| Third Way Center, Lincoln | 2.0 | 3.2 |
| Touchton Foster Home (Boulder County) | 0.0 | 0.3 |
| Turning Point Center For Youth and Family Development | 0.2 | 3.2 |
| Turning Point Center (Boys Residential) | 10.7 | 15.1 |
| Turning Point, Mathews St. | 5.5 | 6.7 |
| Youthtrack, Jeffco | 6.0 | 6.3 |
| Youthtrack, San Luis Valley | 3.0 | 2.9 |
| Youthtrack, Work and Learn | 9.9 | 9.6 |
| Youth Ventures | 13.6 | 15.6 |
| <i>Community Subtotal</i> | <i>142.1</i> | <i>151.7</i> |
| <i>Private Contract Total</i> | <i>776.5</i> | <i>800.8</i> |
| <i>Other Residential*</i> | <i>19.9</i> | <i>19.3</i> |
| RESIDENTIAL TOTAL | 1,253.8 | 1,295.7 |

ADP by Region

| <u>Region</u> | <u>February</u> | <u>YTD</u> |
|---------------|-----------------|---------------|
| Central | 512.8 | 541.8 |
| Northeast | 344.9 | 346.2 |
| Southern | 276.9 | 287.7 |
| Western | 119.2 | 120.0 |
| Total | 1253.8 | 1295.7 |

*Includes Group Homes, Job Corps, Hospitals, Mental Health Institutes, Shelter Care, etc.

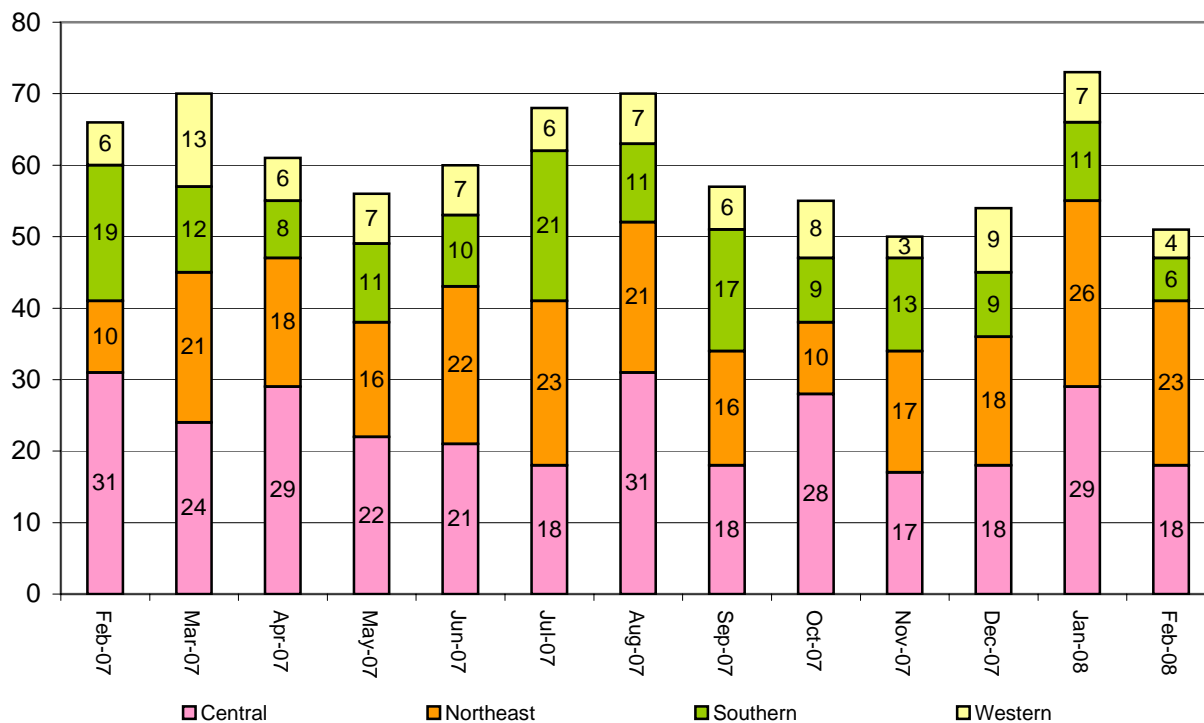
February 2008 DYC Population Report

IV. New Commitments

New Commitments by Region

| | <u>February 2008</u> | <u>YTD</u> | <u>February 2007</u> | <u>Last YTD</u> |
|-----------------------------|----------------------|------------|----------------------|-----------------|
| Central Region | 18 | 200 | 31 | 209 |
| Northeast Region | 23 | 156 | 10 | 164 |
| Southern Region | 6 | 101 | 19 | 135 |
| Western Region | 4 | 51 | 6 | 59 |
| New Commitment Total | 51 | 508 | 66 | 567 |

Monthly New Commitments



February 2008 DYC Population Report

V. Parole Services

Parole ADP by Region

| | <u>February 2008</u> | <u>YTD</u> | <u>Last YTD</u> |
|---------------------|--------------------------|--------------|-----------------|
| Central Region | 231.3 | 219.3 | 232.3 |
| Northeast Region | 138.7 | 142.5 | 147.6 |
| Southern Region | 112.1 | 106.5 | 97.9 |
| Western Region | 44.3 | 53.0 | 57.8 |
| Parole Total | 526.4 | 521.2 | 535.6 |

Parole Intakes

Parole Discharges

Parole LOS

| | <u>February 2008</u> | | <u>February 2008</u> | | <u>YTD</u> |
|---------------------|----------------------|------------|----------------------|------------|------------|
| | <u>YTD</u> | <u>YTD</u> | <u>YTD</u> | <u>YTD</u> | <u>YTD</u> |
| Central Region | 21 | 261 | 40 | 258 | 6.5 |
| Northeast Region | 14 | 168 | 24 | 159 | 7.2 |
| Southern Region | 15 | 130 | 16 | 99 | 6.8 |
| Western Region | 4 | 49 | 9 | 75 | 6.4 |
| Parole Total | 54 | 608 | 89 | 591 | 6.7 |

Monthly Parole ADP

