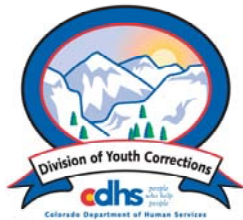


JANUARY 2008 MONTHLY POPULATION REPORT

Prepared by the Division of Youth Corrections Research and Evaluation Unit February 20, 2008



Colorado Department of Human Services
Division of Youth Corrections

Working with Colorado Communities to Achieve Justice

January 2008 DYC Population Report

I.	Summary Population Data	1
II.	Detention ADP by Facility	2
III.	Commitment Services	
	A. State and Contract Secure ADP by Facility	3
	B. Community/Other Residential ADP by Facility	4
IV.	New Commitments	5
V.	Parole Services	6

January 2008 DYC Population Report

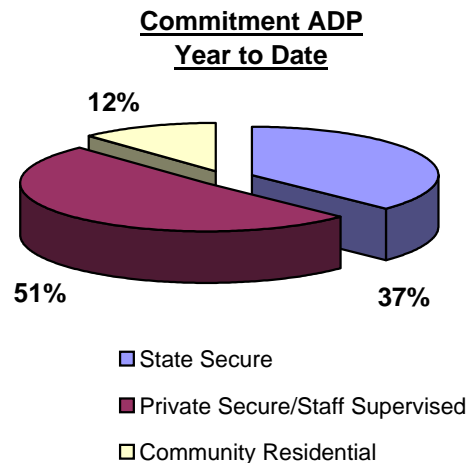
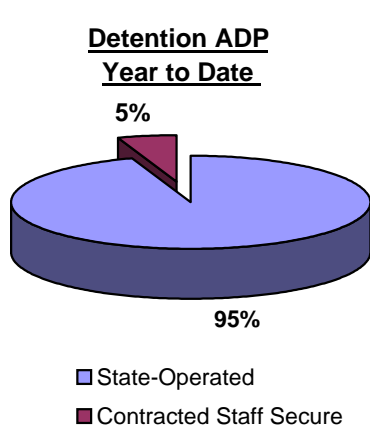
I. Summary Population Data*

DETAINED YOUTH	Average Daily Population (ADP)		Length of Stay (LOS)
	January 2008	YTD	YTD
State-Operated	380.0	381.9	13.8 days
Contracted Staff Secure	23.9	21.7	13.3 days
Total Detained	403.9	403.7	13.8 days

COMMITTED YOUTH	Average Daily Population (ADP)		Length of Stay (LOS)
	January 2008	YTD	YTD
State Secure	465.4	478.2	
Private Secure/Staff Supervised	633.0	651.0	
Community Residential	139.9	154.1	
Other Residential**	15.1	18.2	
Total Committed Residential	1,253.5	1,301.5	17.8 months
<i>Committed Residential w/o Boulder</i>	<i>1,249.0</i>	<i>1,294.6</i>	

PAROLED YOUTH	Average Daily Population (ADP)		Length of Stay (LOS)
	January 2008	YTD	YTD
Total Paroled	540.9	520.4	6.7 months

TOTAL STATEWIDE ADP	January 2008	YTD
	2,198.3	2,225.5



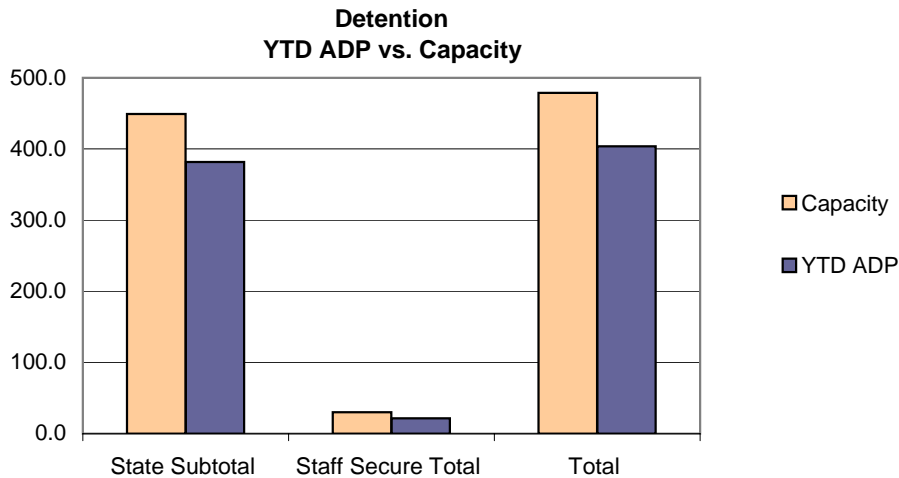
*Due to rounding, totals shown may not be an exact sum of the subtotals

**Includes Group Homes, Job Corps, Hospitals, Mental Health Institutes, Shelter Care, etc.

January 2008 DYC Population Report

II. Detention ADP by Facility

Facility	Average Daily Population				New Admissions		YTD LOS in Days
	Operating Capacity	January 2008	YTD	YTD % of Capacity	January 2008	YTD	LOS
<i>State Operated Detention</i>							
Adams	29	25.4	24.9	85.8%	63	482	11.0
Gilliam	73	68.3	67.2	92.1%	110	752	18.6
Grand Mesa	24	19.5	19.9	82.8%	40	275	14.9
Marvin Foote	96	80.6	83.2	86.7%	160	1,135	15.8
Mount View	60	42.4	44.8	74.6%	87	649	14.4
Platte Valley	69	65.7	64.1	92.9%	159	1,065	12.3
Pueblo	40	34.3	34.0	85.1%	95	625	12.0
Spring Creek	58	43.9	43.9	75.6%	143	860	11.2
<i>State Subtotal</i>	<i>449</i>	<i>380.0</i>	<i>381.9</i>	<i>85.1%</i>	<i>857</i>	<i>5,843</i>	<i>13.8</i>
<i>Staff Secure Detention</i>							
Brown Center	2	2.0	1.3	64.8%	1	14	16.6
Hilltop	5	3.2	3.3	66.1%	7	40	20.9
Midway (Remington)	8	6.2	6.2	78.0%	24	142	9.8
Prowers	1	0.6	0.2	24.0%	0	4	12.9
Robert DeNier	9	7.6	7.2	79.7%	19	100	15.5
Youthtrack San Luis Valley	5	4.3	3.5	69.4%	8	61	12.0
<i>Staff Secure Total</i>	<i>30</i>	<i>23.9</i>	<i>21.7</i>	<i>72.4%</i>	<i>59</i>	<i>361</i>	<i>13.3</i>
TOTAL	479	403.9	403.7	84.3%	916	6,204	13.8



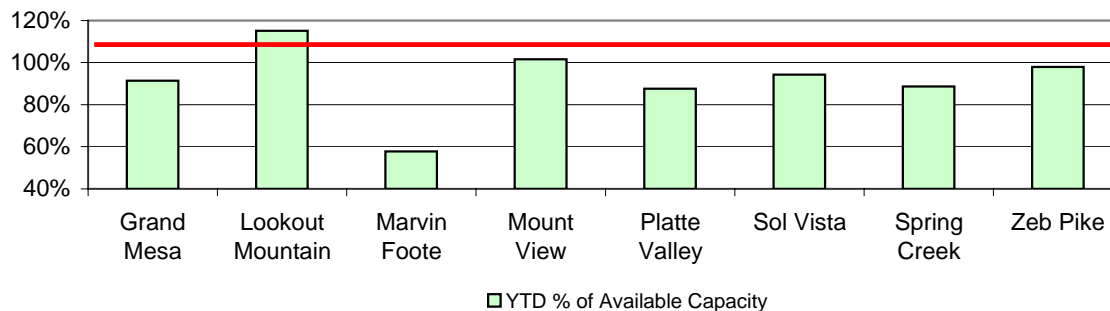
January 2008 DYC Population Report

III. Commitment Services

A. State and Contract Secure ADP by Facility

Facility	<u>Operational Capacity</u> (YTD)	<u>January 2008</u>	<u>YTD</u>	<u>YTD % of</u> <u>Capacity</u>	<u>YTD % of Available</u> <u>Capacity</u>
State Secure					
Adams	0	0.5	0.3	N/A	N/A
Gilliam	0	1.5	1.0	N/A	N/A
Grand Mesa	44	39.4	40.2	91.4%	91.4%
Lookout	201.7	167.4	193.4	95.9%	115.1%
Marvin Foote	22	10.2	12.7	57.7%	57.7%
Mount View	73	74.7	74.2	101.7%	101.7%
Platte Valley	66	62.5	57.9	87.7%	87.7%
Pueblo	0	1.0	0.7	N/A	N/A
Sol Vista	20	18.5	18.9	94.3%	94.3%
Spring Creek	45	50.0	39.9	88.6%	88.6%
Zeb Pike	40	39.8	39.2	98.0%	98.0%
<i>State Subtotal</i>	<i>511.7</i>	<i>465.4</i>	<i>478.2</i>	<i>93.5%</i>	<i>100.0%</i>
Contract Secure/Staff Supervised					
Alternative Homes For Youth - Greeley		6.8	8.3		
Betty K. Marler Center		40.4	39.0		
Brown Center		2.0	2.9		
Cedar Springs		0.0	0.8		
Childrens Ark		3.8	6.9		
Devereux Cleo Wallace		18.6	21.7		
El Pueblo Ranch		2.0	3.8		
Excelsior Youth Center		0.0	0.3		
Glen Mills Schools		1.0	1.0		
Griffith Center (SR)		1.0	2.6		
Griffith Center, Grand Ave Girls (WR)		4.7	5.2		
Hand Up Homes for Youth - West		3.0	1.2		
Hilltop (Residential Youth Services)		10.7	11.2		
Jefferson Hills		42.3	39.0		
Jefferson Hills Aurora		63.5	60.0		
Kidz Ark Sterling		1.5	2.3		
Mountain Star Center		4.0	3.8		
Ridge View		398.7	406.4		
Robert DeNier		12.5	15.0		
Southern Peaks		14.6	18.9		
Third Way Center - Lowry		2.0	0.9		
<i>Contract Secure Subtotal</i>		<i>633.0</i>	<i>651.0</i>		

**State Secure Commitment
Percent of Available Capacity by Facility**



January 2008

DYC Population Report

III. Commitment Services Continued

B. Community/Other Residential APD by Facility, ADP by Region

<u>Facility</u>	<u>January</u> <u>2008</u>	<u>YTD</u>
Community		
Ariel Clinical Services	1.8	0.3
Dale House Project	10.3	10.0
Daybreak & Daybreak Princeton	3.9	4.2
Denver Area Youth Services (DAYS)	4.5	7.0
Griffith Centers (SR)	14.8	15.0
Griffith Centers for Children, Inc. - Chins Up	0.2	0.0
Job Corps	2.4	1.1
Kidz Ark New Raymer Ranch	0.5	0.9
Longmont Community Treatment Center	0.0	0.3
Lost and Found Inc., Arvada	11.6	8.0
Lost and Found Inc., Morrison	4.3	5.5
Maple Star Colorado	1.0	1.4
Marilee Center	5.5	6.6
Mesa County Community Corrections	1.7	1.7
Mt Evans Qualifying House	10.7	8.4
Reflections For Youth Inc., Prairie View	2.0	2.0
Reflections For Youth Inc., Wilderness	1.0	0.3
ROP - Canyon State Academy	0.0	0.8
Summit Treatment Service, Inc	0.5	0.1
Synergy Administration	2.3	5.9
Third Way Center	2.0	2.3
Third Way Center, Pontiac	5.0	3.6
Third Way Center, York	4.1	4.8
Third Way Center, Lincoln	1.2	3.0
Touchton Foster Home (Boulder County)	0.0	0.4
Turning Point Center For Youth and Family Development	1.3	3.6
Turning Point Center (Boys Residential)	11.8	15.7
Turning Point, Mathews St.	6.0	6.8
Youthtrack, Jeffco	6.9	6.4
Youthtrack, San Luis Valley	2.2	2.9
Youthtrack, Work and Learn	8.7	9.7
Youth Ventures	14.0	15.7
<i>Community Subtotal</i>	<i>139.9</i>	<i>154.1</i>
<i>Private Contract Total</i>	<i>772.9</i>	<i>805.1</i>
<i>Other Residential*</i>	<i>15.1</i>	<i>18.2</i>
RESIDENTIAL TOTAL	1,253.5	1,301.5

ADP by Region

<u>Region</u>	<u>January</u>	<u>YTD</u>
Central	518.8	544.8
Northeast	335.2	346.6
Southern	281.3	288.2
Western	118.2	121.8
Total	1253.5	1301.5

*Includes Group Homes, Job Corps, Hospitals, Mental Health Institutes, Shelter Care, etc.

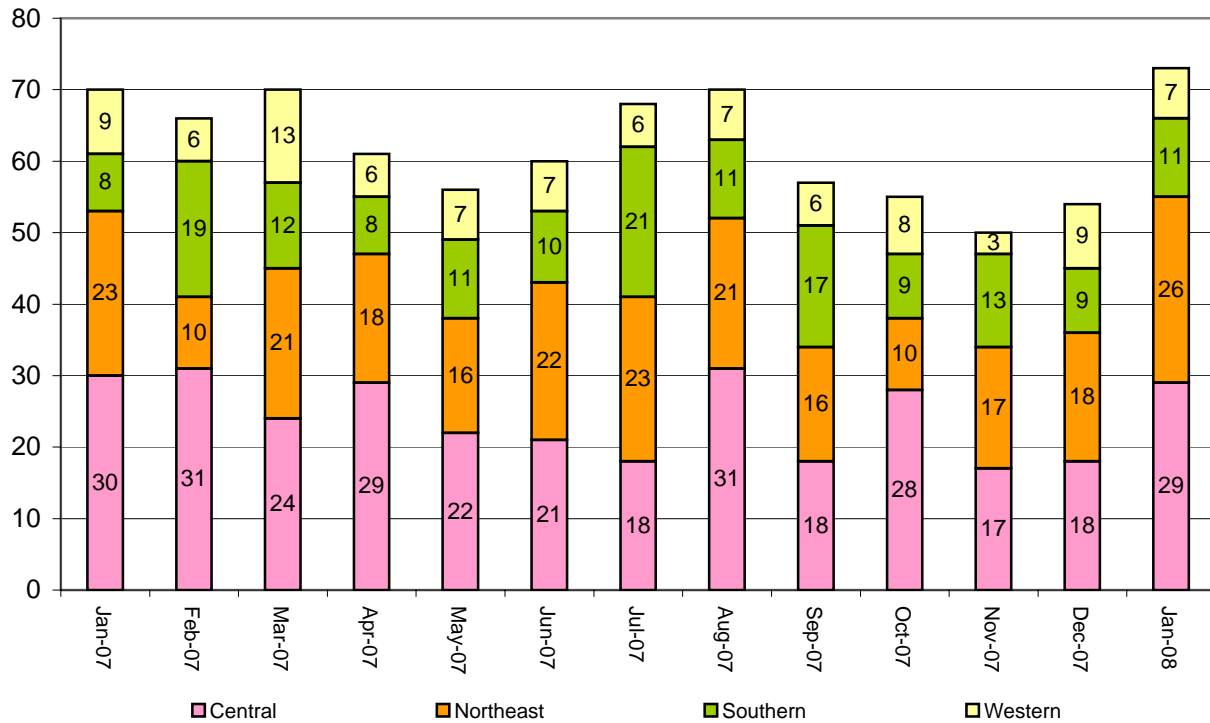
January 2008 DYC Population Report

IV. New Commitments

New Commitments by Region

	<u>January 2008</u>	<u>YTD</u>	<u>January 2007</u>	<u>Last YTD</u>
Central Region	29	181	30	178
Northeast Region	26	132	23	153
Southern Region	11	95	8	116
Western Region	7	47	9	53
New Commitment Total	73	455	70	500

Monthly New Commitments



January 2008 DYC Population Report

V. Parole Services

Parole ADP by Region

	<u>January 2008</u>	<u>YTD</u>	<u>Last YTD</u>
Central Region	235.4	218.6	234.1
Northeast Region	143.5	142.9	147.8
Southern Region	113.9	104.7	97.4
Western Region	48.1	54.2	59.9
Parole Total	540.9	520.4	539.2

Parole Intakes

Parole Discharges

Parole LOS

	<u>January 2008</u>	<u>YTD</u>	<u>January 2008</u>	<u>YTD</u>	<u>YTD</u>
Central Region	33	242	24	216	6.4
Northeast Region	22	153	21	132	7.3
Southern Region	11	115	12	82	6.8
Western Region	7	45	4	65	6.4
Parole Total	73	555	61	495	6.7

Monthly Parole ADP

