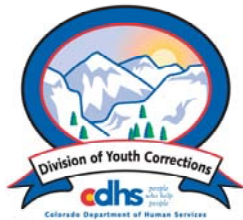


DECEMBER 2007 MONTHLY POPULATION REPORT

Prepared by the Division of Youth Corrections Research and Evaluation Unit January 17, 2008



Colorado Department of Human Services
Division of Youth Corrections

Working with Colorado Communities to Achieve Justice

December 2007

DYC Population Report

I.	Summary Population Data	1
II.	Detention ADP by Facility	2
III.	Commitment Services	
	A. State and Contract Secure ADP by Facility	3
	B. Community/Other Residential ADP by Facility	4
IV.	New Commitments	5
V.	Parole Services	6

December 2007 DYC Population Report

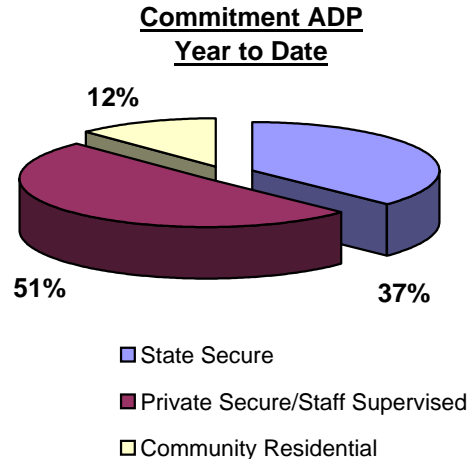
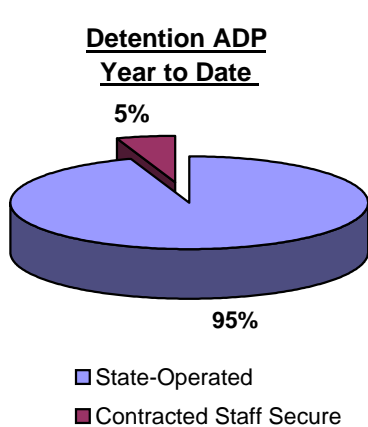
I. Summary Population Data*

DETAINED YOUTH	Average Daily Population (ADP)		Length of Stay (LOS)
	December 2007	YTD	YTD
State-Operated	382.4	385.3	13.5 days
Contracted Staff Secure	23.1	22.0	12.9 days
Total Detained	405.5	407.3	13.5 days

COMMITTED YOUTH	Average Daily Population (ADP)		Length of Stay (LOS)
	December 2007	YTD	YTD
State Secure	460.5	480.5	
Private Secure/Staff Supervised	642.2	654.2	
Community Residential	150.6	156.3	
Other Residential**	11.6	18.2	
Total Committed Residential	1,264.9	1,309.2	17.8 months
<i>Committed Residential w/o Boulder</i>	<i>1,256.9</i>	<i>1,301.9</i>	

PAROLED YOUTH	Average Daily Population (ADP)		Length of Stay (LOS)
	December 2007	YTD	YTD
Total Paroled	537.8	515.9	6.7 months

TOTAL STATEWIDE ADP	December 2007	YTD
	2,208.2	2,232.5



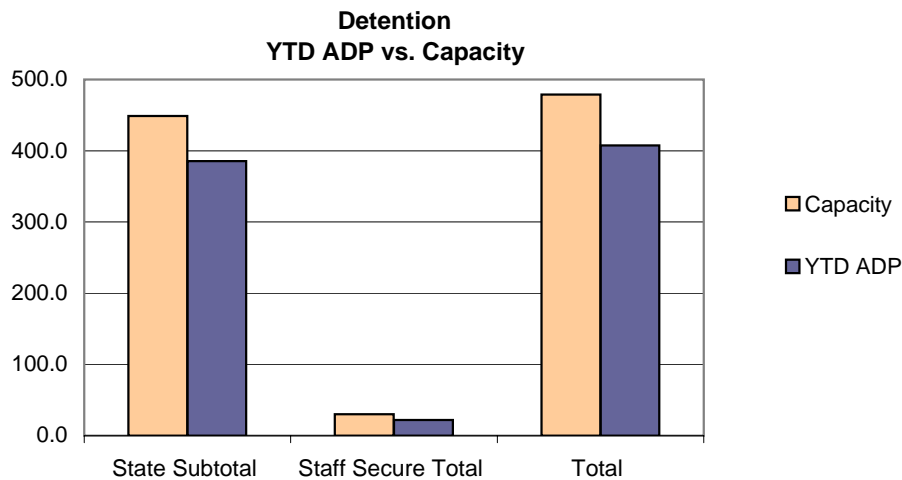
*Due to rounding, totals shown may not be an exact sum of the subtotals

**Includes Group Homes, Job Corps, Hospitals, Mental Health Institutes, Shelter Care, etc.

December 2007 DYC Population Report

II. Detention Program Services

Facility	Average Daily Population				New Admissions		YTD LOS in Days
	Operating Capacity	December 2007	YTD	YTD % of Capacity	December 2007	YTD	LOS
<i>State Operated Detention</i>							
Adams	29	27.7	25.1	86.5%	72	418	10.6
Gilliam	73	63.8	67.3	92.2%	102	642	17.9
Grand Mesa	24	17.7	20.1	83.8%	32	235	14.4
Marvin Foote	96	79.5	84.0	87.5%	151	975	15.6
Mount View	60	46.3	45.5	75.9%	77	563	14.1
Platte Valley	69	65.9	64.8	93.9%	139	906	11.7
Pueblo	40	34.0	34.3	85.6%	97	530	11.9
Spring Creek	58	47.5	44.3	76.4%	108	717	11.0
<i>State Subtotal</i>	<i>449</i>	<i>382.4</i>	<i>385.3</i>	<i>85.8%</i>	<i>778</i>	<i>4,986</i>	<i>13.5</i>
<i>Staff Secure Detention</i>							
Brown Center	2	1.8	1.2	59.0%	3	13	14.5
Hilltop	5	4.8	3.8	75.4%	3	34	19.1
Midway (Remington)	8	6.7	6.3	79.3%	16	118	9.5
Prowers	1	0.3	0.2	19.0%	2	4	10.1
Robert DeNier	9	6.2	7.2	79.6%	11	81	16.4
Youthtrack San Luis Valley	5	3.3	3.3	66.6%	8	53	10.8
<i>Staff Secure Total</i>	<i>30</i>	<i>23.1</i>	<i>22.0</i>	<i>73.2%</i>	<i>43</i>	<i>303</i>	<i>12.9</i>
TOTAL	479	405.5	407.3	85.0%	821	5,289	13.5



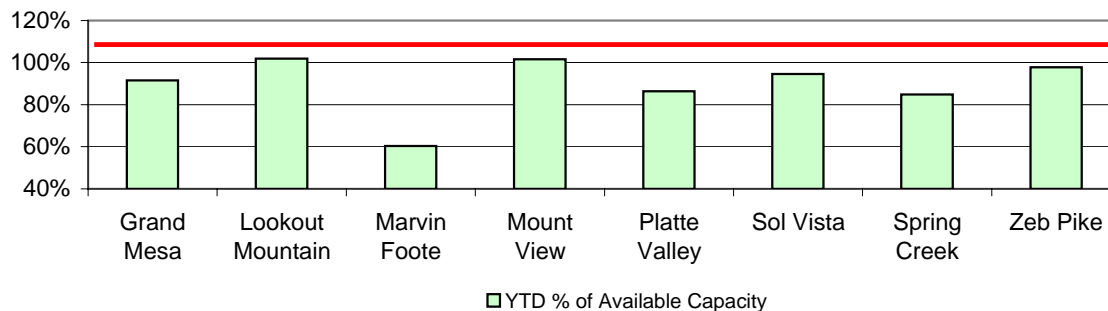
December 2007 DYC Population Report

III. Commitment Services

A. State and Contract Secure ADP by Facility

<u>Facility</u>	<u>Operational Capacity (YTD)</u>	<u>December 2007</u>	<u>YTD</u>	<u>YTD % of Capacity</u>	<u>YTD % of Available Capacity</u>
State Secure					
Adams	0	0.1	0.2	N/A	N/A
Gilliam	0	1.7	1.0	N/A	N/A
Grand Mesa	44	41.3	40.3	91.5%	91.5%
Lookout	207.3	176.0	197.7	95.4%	101.9%
Marvin Foote	22	13.4	13.3	60.3%	60.3%
Mount View	73	74.7	74.2	101.6%	101.6%
Platte Valley	66	57.7	57.1	86.5%	86.5%
Pueblo	0	1.0	0.6	N/A	N/A
Sol Vista	20	18.2	18.9	94.6%	94.6%
Spring Creek	45	37.7	38.2	84.8%	84.8%
Zeb Pike	40	38.8	39.1	97.7%	97.7%
<i>State Subtotal</i>	<i>517.3</i>	<i>460.5</i>	<i>480.5</i>	<i>92.9%</i>	<i>95.3%</i>
Contract Secure/Staff Supervised					
Alternative Homes For Youth - Greeley		8.3	8.5		
Betty K. Marler Center		40.0	38.8		
Brown Center		1.4	2.9		
Cedar Springs		0.0	0.9		
Childrens Ark		5.0	7.4		
Devereux Cleo Wallace		19.3	22.5		
El Pueblo Ranch		2.0	4.1		
Excelsior Youth Center		0.0	0.3		
Glen Mills Schools		1.0	1.0		
Griffith Center (SR)		1.7	2.9		
Griffith Center, Grand Ave Girls (WR)		4.0	5.2		
Hand Up Homes for Youth - West		3.0	0.9		
Hilltop (Residential Youth Services)		11.9	11.3		
Jefferson Hills		42.3	38.4		
Jefferson Hills Aurora		62.2	59.5		
Kidz Ark Sterling		2.0	2.4		
Mountain Star Center		4.1	3.7		
Ridge View		404.8	407.9		
Robert DeNier		11.8	15.4		
Southern Peaks		16.0	19.7		
Third Way Center - Lowry		1.7	0.7		
<i>Contract Secure Subtotal</i>		<i>642.2</i>	<i>654.2</i>		

**State Secure Commitment
Percent of Available Capacity by Facility**



December 2007

DYC Population Report

III. Commitment Services Continued

B. Community/Other Residential APD by Facility, ADP by Region

<u>Facility</u>	<u>December</u> <u>2007</u>	<u>YTD</u>
Community		
Ariel Clinical Services	0.0	0.1
Dale House Project	11.6	10.0
Daybreak & Daybreak Princeton	3.6	4.2
Denver Area Youth Services (DAYS)	5.2	7.4
Griffith Centers (SR)	15.5	15.0
Job Corps	1.0	0.8
Kidz Ark New Raymer Ranch	1.0	1.0
Longmont Community Treatment Center	0.0	0.4
Lost and Found Inc., Arvada	9.6	7.4
Lost and Found Inc., Morrison	4.4	5.8
Maple Star Colorado	1.0	1.5
Marilee Center	6.5	6.8
Mesa County Community Corrections	3.6	1.7
Mt Evans Qualifying House	7.3	8.0
Reflections For Youth Inc., Prairie View	2.0	2.0
Reflections For Youth Inc., Wilderness	0.6	0.2
ROP - Canyon State Academy	0.8	1.0
Synergy Administration	3.5	6.5
Third Way Center	2.0	2.4
Third Way Center, Pontiac	3.3	3.4
Third Way Center, York	4.0	4.6
Third Way Center, Lincoln	2.0	3.4
Touchton Foster Home (Boulder County)	0.2	0.4
Turning Point Center For Youth and Family Development	5.0	4.0
Turning Point Center (Boys Residential)	16.6	16.3
Turning Point, Mathews St.	6.0	7.0
Youthtrack, Jeffco	7.7	6.3
Youthtrack, San Luis Valley	3.0	3.0
Youthtrack, Work and Learn	9.1	9.8
Youth Ventures	14.6	16.1
<i>Community Subtotal</i>	<i>150.6</i>	<i>156.3</i>
<i>Private Contract Total</i>	<i>792.9</i>	<i>810.5</i>
<i>Other Residential*</i>	<i>11.6</i>	<i>18.2</i>
RESIDENTIAL TOTAL	1,264.9	1,309.2

ADP by Region

<u>Region</u>	<u>December</u>	<u>YTD</u>
Central	526.3	549.7
Northeast	337.7	346.7
Southern	282.9	290.4
Western	118.1	122.4
Total	1264.9	1309.2

*Includes Group Homes, Job Corps, Hospitals, Mental Health Institutes, Shelter Care, etc.

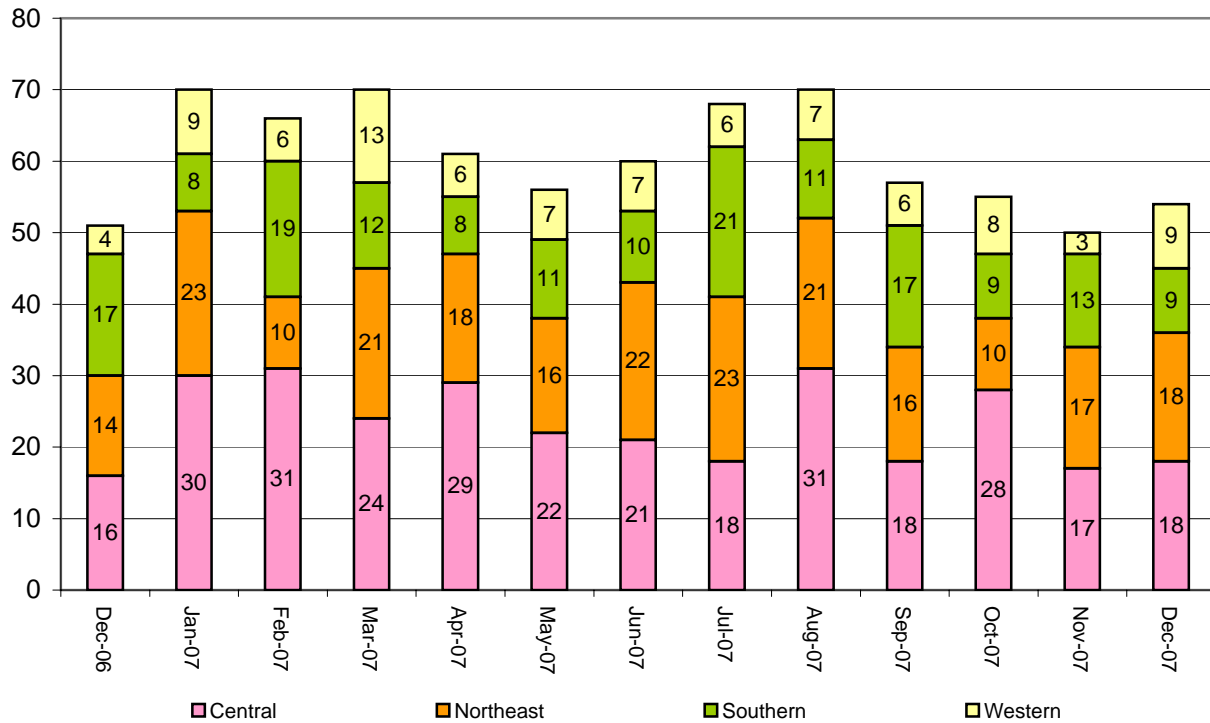
December 2007 DYC Population Report

IV. New Commitments

New Commitments by Region

	<u>December 2007</u>	<u>YTD</u>	<u>December 2006</u>	<u>Last YTD</u>
Central Region	18	152	16	146
Northeast Region	18	105	14	130
Southern Region	9	83	17	105
Western Region	9	40	4	44
New Commitment Total	54	380	51	425

Monthly New Commitments



December 2007 DYC Population Report

V. Parole Services

Parole ADP by Region

	<u>December 2007</u>	<u>YTD</u>	<u>Last YTD</u>
Central Region	230.8	215.4	233.0
Northeast Region	145.9	142.6	145.2
Southern Region	115.8	102.6	97.3
Western Region	45.3	55.4	59.0
Parole Total	537.8	515.9	534.5

Parole Intakes

Parole Discharges

Parole LOS

	<u>December 2007</u>		<u>December 2007</u>		<u>YTD</u>
	<u>December 2007</u>	<u>YTD</u>	<u>December 2007</u>	<u>YTD</u>	<u>YTD</u>
Central Region	46	209	33	190	6.5
Northeast Region	18	130	12	108	7.2
Southern Region	11	104	11	68	6.9
Western Region	6	38	7	59	6.3
Parole Total	81	481	63	425	6.7

Monthly Parole ADP

