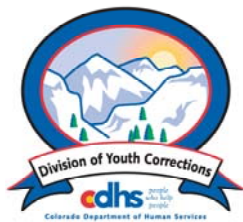


# NOVEMBER 2007 MONTHLY POPULATION REPORT

---

Prepared by the Division of Youth Corrections Research and Evaluation Unit December 19, 2007



**Colorado Department of Human Services**  
**Division of Youth Corrections**

---

Working with Colorado Communities to Achieve Justice

# November 2007

## DYC Population Report

<b>I.</b>	<b>Summary Population Data</b>	<b>1</b>
<b>II.</b>	<b>Detention ADP by Facility</b>	<b>2</b>
<b>III.</b>	<b>Commitment Services</b>	
	A. State and Contract Secure ADP by Facility	<b>3</b>
	B. Community/Other Residential ADP by Facility	<b>4</b>
<b>IV.</b>	<b>New Commitments</b>	<b>5</b>
<b>V.</b>	<b>Parole Services</b>	<b>6</b>

# November 2007 DYC Population Report

## I. Summary Population Data\*

DETAINED YOUTH	Average Daily Population (ADP)		Length of Stay (LOS)
	November 2007	YTD	YTD
State-Operated	379.3	385.2	13.5 days
Contracted Staff Secure	20.7	21.6	13.0 days
<b>Total Detained</b>	<b>400.0</b>	<b>406.8</b>	<b>13.5 days</b>

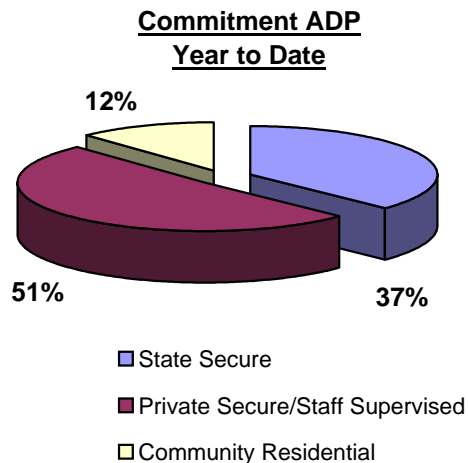
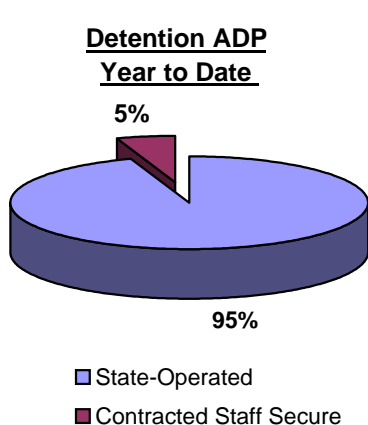
COMMITTED YOUTH	Average Daily Population (ADP)		Length of Stay (LOS)
	November 2007	YTD	YTD
State Secure	473.8	484.8	
Private Secure/Staff Supervised	651.0	656.6	
Community Residential	151.0	156.9	
Other Residential**	11.3	19.4	
<b>Total Committed Residential</b>	<b>1,287.1</b>	<b>1,317.7</b>	<b>17.9 months</b>
<i>Committed Residential w/o Boulder</i>	<i>1,280.1</i>	<i>1,310.6</i>	

PAROLED YOUTH	Average Daily Population (ADP)		Length of Stay (LOS)
	November 2007	YTD	YTD
<b>Total Paroled</b>	<b>525.8</b>	<b>512.4</b>	<b>6.7 months</b>

TOTAL STATEWIDE ADP	November 2007	YTD
	<b>2,212.9</b>	<b>2,236.8</b>



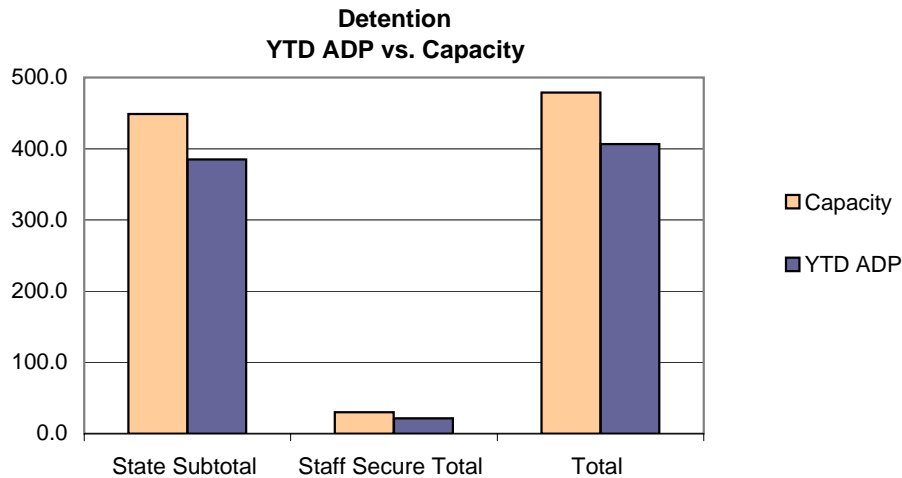
\*Due to rounding, totals shown may not be an exact sum of the subtotals

\*\*Includes Group Homes, Job Corps, Hospitals, Mental Health Institutes, Shelter Care, etc.

# November 2007 DYC Population Report

## II. Detention Data by Facility

Facility	Average Daily Population				New Admissions		YTD LOS in Days
	Operating Capacity	November 2007	YTD	YTD % of Capacity	November 2007	YTD	LOS
<i>State Operated Detention</i>							
Adams	29	27.4	24.5	84.6%	69	346	10.5
Gilliam	73	62.7	67.9	93.0%	97	540	18.4
Grand Mesa	24	21.1	20.5	85.5%	39	203	14.1
Marvin Foote	96	79.9	85.1	88.6%	146	824	15.6
Mount View	60	48.0	45.3	75.4%	95	486	13.3
Platte Valley	69	65.5	64.2	93.1%	170	767	11.8
Pueblo	40	33.1	34.1	85.2%	75	433	12.2
Spring Creek	58	41.6	43.6	75.2%	110	609	10.8
<i>State Subtotal</i>	<i>449</i>	<i>379.3</i>	<i>385.2</i>	<i>85.8%</i>	<i>801</i>	<i>4,208</i>	<i>13.5</i>
<i>Staff Secure Detention</i>							
Brown Center	2	1.0	1.1	53.5%	3	10	13.9
Hilltop	5	3.4	3.6	71.0%	5	31	19.4
Midway (Remington)	8	6.3	6.2	77.6%	28	102	9.9
Prowers	1	0.0	0.2	17.0%	0	2	12.7
Robert DeNier	9	7.0	7.2	80.3%	14	70	15.7
Youthtrack San Luis Valley	5	3.0	3.4	67.0%	13	45	11.4
<i>Staff Secure Total</i>	<i>30</i>	<i>20.7</i>	<i>21.6</i>	<i>71.9%</i>	<i>63</i>	<i>260</i>	<i>13.0</i>
<b>TOTAL</b>	<b>479</b>	<b>400.0</b>	<b>406.8</b>	<b>84.9%</b>	<b>864</b>	<b>4,468</b>	<b>13.5</b>



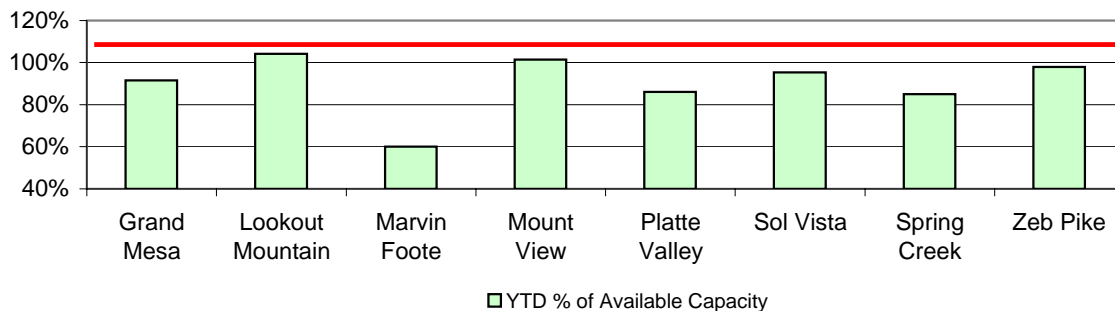
# November 2007 DYC Population Report

## III. Commitment Services

### A. State and Contract Secure ADP by Facility

Facility	<u>Operational Capacity</u> (YTD)	<u>November</u> <u>2007</u>	<u>YTD</u>	<u>YTD % of</u> <u>Capacity</u>	<u>YTD % of Available</u> <u>Capacity</u>
<b>State Secure</b>					
Adams	0	0.6	0.2	N/A	N/A
Gilliam	0	2.8	1.1	N/A	N/A
Grand Mesa	44	40.7	40.3	91.6%	91.6%
Lookout	200.7	192.0	202.1	100.7%	104.2%
Marvin Foote	22	14.4	13.2	60.1%	60.1%
Mount View	73	78.1	74.0	101.4%	101.4%
Platte Valley	66	54.7	56.8	86.0%	86.0%
Pueblo	0	1.0	0.6	N/A	N/A
Sol Vista	20	19.0	19.1	95.3%	95.3%
Spring Creek	45	32.0	38.2	85.0%	85.0%
Zeb Pike	40	38.5	39.2	97.9%	97.9%
<i>State Subtotal</i>	<i>510.7</i>	<i>473.8</i>	<i>484.8</i>	<i>94.9%</i>	<i>96.2%</i>
<b>Contract Secure/Staff Supervised</b>					
Alternative Homes For Youth - Greeley		9.0	8.4		
Betty K. Marler Center		39.9	38.6		
Brown Center		2.0	3.2		
Cedar Springs		0.0	1.1		
Childrens Ark		5.1	7.9		
Devereux Cleo Wallace		20.5	23.1		
El Pueblo Ranch		2.7	4.5		
Excelsior Youth Center		0.0	0.4		
Glen Mills Schools		1.0	1.0		
Griffith Center (SR)		1.8	3.1		
Griffith Center, Grand Ave Girls (WR)		7.5	5.5		
Hand Up Homes for Youth - West		1.7	0.5		
Hilltop (Residential Youth Services )		11.7	11.1		
Jefferson Hills		38.8	37.6		
Jefferson Hills Aurora		60.4	59.1		
Kidz Ark Sterling		2.0	2.5		
Mountain Star Center		4.0	3.7		
Ridge View		411.5	408.5		
Robert DeNier		13.1	16.0		
Southern Peaks		17.1	20.4		
Third Way Center - Lowry		1.4	0.5		
<i>Contract Secure Subtotal</i>		<i>651.0</i>	<i>656.6</i>		

**State Secure Commitment  
Percent of Available Capacity by Facility**



# November 2007

## DYC Population Report

### III. Commitment Services Continued

#### B. Community/Other Residential APD by Facility, ADP by Region

<u>Facility</u>	<u>November</u> <u>2007</u>	<u>YTD</u>
<b>Community</b>		
Ariel Clinical Services	0.0	0.1
Dale House Project	10.7	9.7
Daybreak & Daybreak Princeton	3.8	4.3
Denver Area Youth Services (DAYS)	4.0	7.8
Griffith Centers (SR)	17.4	14.9
Job Corps	1.0	0.8
Kidz Ark New Raymer Ranch	1.0	1.0
Longmont Community Treatment Center	0.0	0.5
Lost and Found Inc., Arvada	7.0	6.9
Lost and Found Inc., Morrison	4.4	6.0
Maple Star Colorado	2.0	1.5
Marilee Center	6.8	6.9
Mesa County Community Corrections	2.1	0.8
Mt Evans Qualifying House	6.5	8.1
Reflections For Youth Inc., Prairie View	2.0	2.0
Reflections For Youth Inc., Wilderness	0.0	0.1
ROP - Canyon State Academy	1.0	1.0
Synergy Administration	5.7	7.2
Third Way Center	2.0	2.5
Third Way Center, Pontiac	3.6	3.5
Third Way Center, York	4.0	4.7
Third Way Center, Lincoln	2.1	3.6
Touchton Foster Home (Boulder County)	1.0	0.5
Turning Point Center For Youth and Family Development	4.8	3.8
Turning Point Center (Boys Residential)	17.7	16.3
Turning Point, Mathews St.	7.2	7.2
Youthtrack, Jeffco	7.0	6.0
Youthtrack, San Luis Valley	2.4	3.0
Youthtrack, Work and Learn	8.9	10.0
Youth Ventures	15.1	16.4
<i>Community Subtotal</i>	<i>151.0</i>	<i>156.9</i>
<i>Private Contract Total</i>	<i>802.0</i>	<i>813.5</i>
<i>Other Residential*</i>	<i>11.3</i>	<i>19.4</i>
<b>RESIDENTIAL TOTAL</b>	<b>1,287.1</b>	<b>1,317.7</b>

#### ADP by Region

<u>Region</u>	<u>November</u>	<u>YTD</u>
Central	545.3	553.9
Northeast	337.3	348.3
Southern	280.2	291.9
Western	124.3	123.6
Total	1287.1	1317.7

\*Includes Group Homes, Job Corps, Hospitals, Mental Health Institutes, Shelter Care, etc.

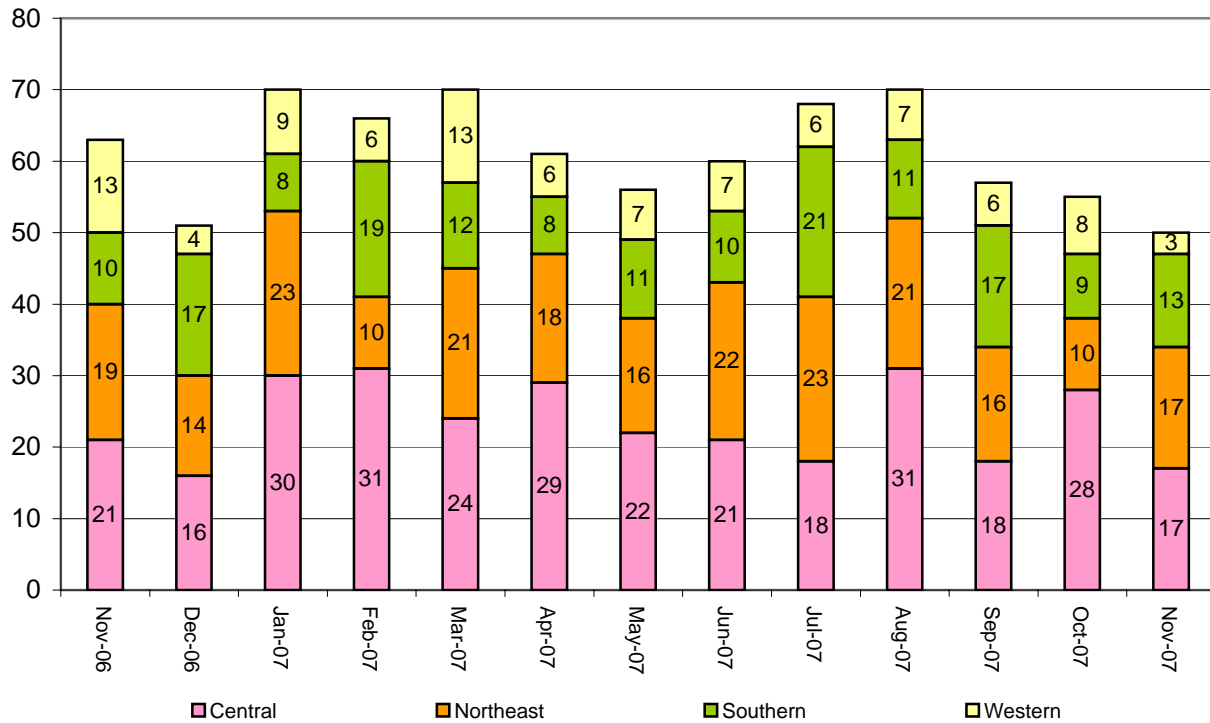
# November 2007 DYC Population Report

## IV. New Commitments

### New Commitments by Region

	<u>November 2007</u>	<u>YTD</u>	<u>November 2006</u>	<u>Last YTD</u>
Central Region	17	128	21	127
Northeast Region	17	86	19	115
Southern Region	13	74	10	88
Western Region	3	31	13	40
<b>New Commitment Total</b>	<b>50</b>	<b>319</b>	<b>63</b>	<b>370</b>

### Monthly New Commitments



# November 2007 DYC Population Report

## V. Parole Services

Parole ADP by Region			
	<u>November 2007</u>	<u>YTD</u>	<u>Last YTD</u>
Central Region	210.9	211.3	230.0
Northeast Region	151.5	143.3	142.2
Southern Region	111.9	99.6	97.1
Western Region	51.5	58.1	56.9
<b>Parole Total</b>	<b>525.8</b>	<b>512.4</b>	<b>526.2</b>

	<u>Parole Intakes</u>		<u>Parole Discharges</u>		<u>Parole LOS</u>
	<u>November 2007</u>	<u>YTD</u>	<u>November 2007</u>	<u>YTD</u>	<u>YTD</u>
Central Region	32	161	31	157	6.6
Northeast Region	15	113	24	96	7.3
Southern Region	17	93	6	57	6.4
Western Region	10	34	10	51	6.3
<b>Parole Total</b>	<b>74</b>	<b>401</b>	<b>71</b>	<b>361</b>	<b>6.7</b>

### Monthly Parole ADP

