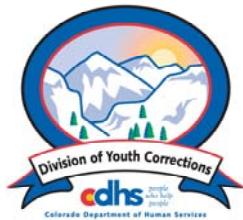


# OCTOBER 2007 MONTHLY POPULATION REPORT

---

Prepared by the Division of Youth Corrections Research and Evaluation Unit November 20, 2007



**Colorado Department of Human Services**  
**Division of Youth Corrections**

---

Working with Colorado Communities to Achieve Justice

# October 2007

## DYC Population Report

<b>I.</b>	<b>Summary Population Data</b>	<b>1</b>
<b>II.</b>	<b>Detention ADP by Facility</b>	<b>2</b>
<b>III.</b>	<b>Commitment Services</b>	
	A. State and Contract Secure ADP by Facility	<b>3</b>
	B. Community/Other Residential ADP by Facility	<b>4</b>
<b>IV.</b>	<b>New Commitments</b>	<b>5</b>
<b>V.</b>	<b>Parole Services</b>	<b>6</b>

# October 2007 DYC Population Report

## I. Summary Population Data\*

DETAINED YOUTH	Average Daily Population (ADP)		Length of Stay (LOS)
	October 2007	YTD	YTD
State-Operated	393.5	385.9	13.6 days
Contracted Staff Secure	20.5	22.0	13.4 days
<b>Total Detained</b>	<b>414.1</b>	<b>407.8</b>	<b>13.6 days</b>

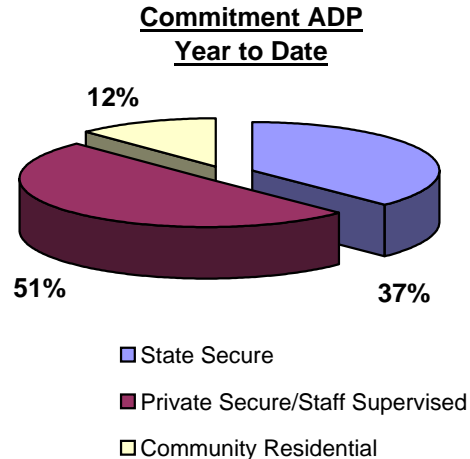
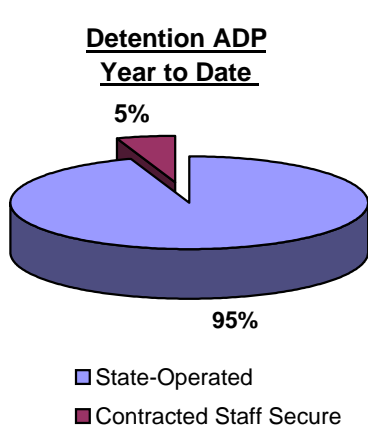
COMMITTED YOUTH	Average Daily Population (ADP)		Length of Stay (LOS)
	October 2007	YTD	YTD
State Secure	477.1	487.4	
Private Secure/Staff Supervised	640.8	658.5	
Community Residential	152.3	158.1	
Other Residential**	17.2	20.3	
<b>Total Committed Residential</b>	<b>1,287.3</b>	<b>1,324.4</b>	<b>18.0 months</b>
<i>Committed Residential w/o Boulder</i>	<i>1,280.3</i>	<i>1,317.2</i>	

PAROLED YOUTH	Average Daily Population (ADP)		Length of Stay (LOS)
	October 2007	YTD	YTD
<b>Total Paroled</b>	<b>533.8</b>	<b>510.0</b>	<b>6.7 months</b>

TOTAL STATEWIDE ADP	October 2007	YTD
	<b>2,235.2</b>	<b>2,242.2</b>



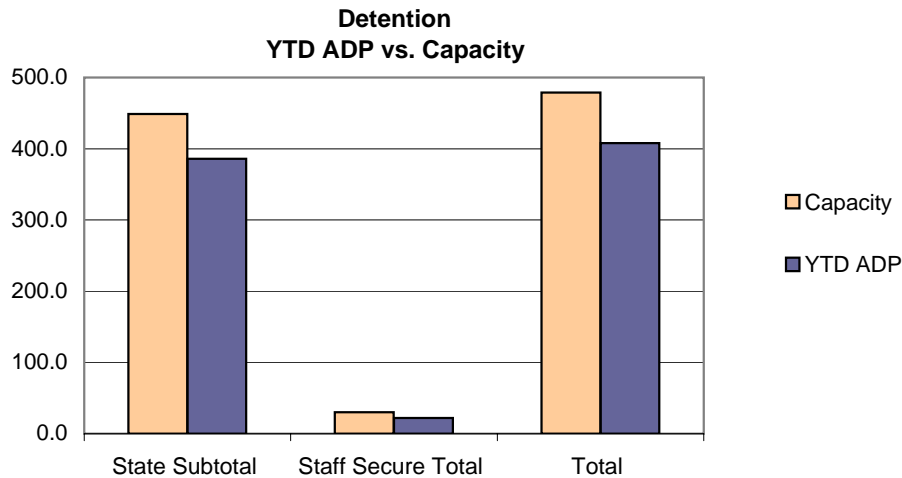
\*Due to rounding, totals shown may not be an exact sum of the subtotals

\*\*Includes Group Homes, Job Corps, Hospitals, Mental Health Institutes, Shelter Care, etc.

# October 2007 DYC Population Report

## II. Detention Data by Facility

Facility	Average Daily Population				New Admissions		YTD LOS in Days
	Operating Capacity	October 2007	YTD	YTD % of Capacity	October 2007	YTD	LOS
<i>State Operated Detention</i>							
Adams	29	27.5	23.7	81.6%	83	277	9.5
Gilliam	73	68.5	68.7	94.0%	112	443	18.3
Grand Mesa	24	20.0	20.3	84.6%	49	165	15.0
Marvin Foote	96	88.0	86.1	89.7%	171	678	15.6
Mount View	60	43.7	44.7	74.5%	92	392	13.9
Platte Valley	69	65.4	64.3	93.2%	164	597	12.0
Pueblo	40	34.5	34.4	86.0%	95	358	12.3
Spring Creek	58	45.9	43.7	75.3%	147	498	11.1
<i>State Subtotal</i>	<i>449</i>	<i>393.5</i>	<i>385.9</i>	<i>85.9%</i>	<i>913</i>	<i>3,408</i>	<i>13.6</i>
<i>Staff Secure Detention</i>							
Brown Center	2	0.3	1.1	54.0%	2	7	18.1
Hilltop	5	3.0	3.6	71.8%	7	26	20.2
Midway (Remington)	8	6.2	6.2	77.4%	24	74	10.3
Prowers	1	0.0	0.2	20.0%	0	2	12.7
Robert DeNier	9	7.8	7.5	83.0%	10	55	14.0
Youthtrack San Luis Valley	5	3.3	3.4	68.8%	5	32	12.3
<i>Staff Secure Total</i>	<i>30</i>	<i>20.5</i>	<i>22.0</i>	<i>73.2%</i>	<i>48</i>	<i>196</i>	<i>13.4</i>
<b>TOTAL</b>	<b>479</b>	<b>414.1</b>	<b>407.8</b>	<b>85.1%</b>	<b>961</b>	<b>3,604</b>	<b>13.6</b>



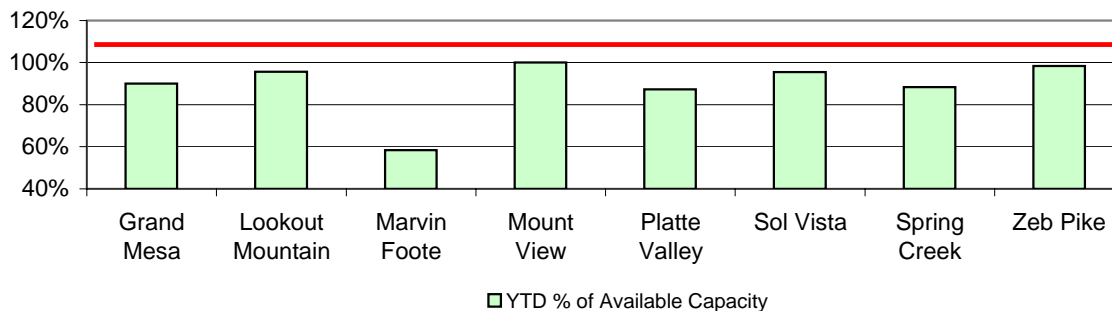
# October 2007 DYC Population Report

## III. Commitment Services

### A. State and Contract Secure ADP by Facility

Facility	Operational Capacity	October 2007	YTD	YTD % of Capacity	YTD % of Available Capacity
<b>State Secure</b>					
Adams	0	0.3	0.1	N/A	N/A
Gilliam	0	0.9	0.9	N/A	N/A
Grand Mesa	44	38.0	39.6	90.0%	90.0%
Lookout	214	196.3	204.6	95.6%	95.6%
Marvin Foote	22	16.6	12.9	58.4%	58.4%
Mount View	73	72.6	73.0	100.0%	100.0%
Platte Valley	66	56.6	57.6	87.3%	87.3%
Pueblo	0	0.2	0.5	N/A	N/A
Sol Vista	20	18.5	19.1	95.5%	95.5%
Spring Creek	45	38.5	39.8	88.4%	88.4%
Zeb Pike	40	38.6	39.4	98.4%	98.4%
<i>State Subtotal</i>	<i>524.0</i>	<i>477.1</i>	<i>487.4</i>	<i>93.0%</i>	<i>93.0%</i>
<b>Contract Secure/Staff Supervised</b>					
Alternative Homes For Youth - Greeley		8.0	8.2		
Betty K. Marler Center		40.3	38.3		
Brown Center		2.2	3.5		
Cedar Springs		0.0	1.4		
Childrens Ark		6.3	8.6		
Devereux Cleo Wallace		22.8	24.4		
El Pueblo Ranch		3.7	4.9		
Excelsior Youth Center		0.0	0.4		
Glen Mills Schools		1.0	1.0		
Griffith Center (SR)		3.0	3.5		
Griffith Center, Grand Ave Girls (WR)		6.2	5.0		
Hand Up Homes for Youth - West		0.8	0.2		
Hilltop (Residential Youth Services )		12.1	11.0		
Jefferson Hills		36.8	37.2		
Jefferson Hills Aurora		57.3	58.8		
Kidz Ark Sterling		2.0	2.6		
Mountain Star Center		2.5	3.6		
Ridge View		400.2	407.8		
Robert DeNier		16.0	16.7		
Southern Peaks		18.6	21.3		
Third Way Center - Lowry		0.9	0.2		
<i>Contract Secure Subtotal</i>		<i>640.8</i>	<i>658.5</i>		

**State Secure Commitment  
Percent of Available Capacity by Facility**



# October 2007

## DYC Population Report

### III. Commitment Services Continued

#### B. Community/Other Residential APD by Facility, ADP by Region

<u>Facility</u>	<u>October</u> <u>2007</u>	<u>YTD</u>
<b>Community</b>		
Ariel Clinical Services	0.27	0.07
Dale House Project	10.2	9.6
Daybreak & Daybreak Princeton	4.3	4.5
Denver Area Youth Services (DAYS)	4.4	8.7
Griffith Centers (SR)	16.6	14.3
Job Corps	1.0	0.7
Kidz Ark New Raymer Ranch	1.0	1.0
Longmont Community Treatment Center	0.0	0.6
Lost and Found Inc., Arvada	7.5	7.2
Lost and Found Inc., Morrison	5.0	6.1
Maple Star Colorado	2.0	1.4
Marilee Center	7.2	6.9
Mesa County Community Corrections	0.7	0.5
Mt Evans Qualifying House	6.8	8.5
Reflections For Youth Inc., Prairie View	2.0	2.0
Reflections For Youth Inc., Wilderness	0.0	0.2
ROP - Canyon State Academy	1.0	1.0
Synergy Administration	6.5	7.5
Third Way Center	2.0	2.6
Third Way Center, Pontiac	3.9	3.5
Third Way Center, York	5.0	4.8
Third Way Center, Lincoln	3.0	4.0
Touchton Foster Home (Boulder County)	1.0	0.4
Turning Point Center For Youth and Family Development	5.0	3.5
Turning Point Center (Boys Residential)	16.5	15.9
Turning Point, Mathews St.	7.2	7.1
Youthtrack, Jeffco	6.7	5.8
Youthtrack, San Luis Valley	3.0	3.2
Youthtrack, Work and Learn	9.6	10.0
Youth Ventures	13.4	16.7
<i>Community Subtotal</i>	<i>152.3</i>	<i>158.1</i>
<i>Private Contract Total</i>	<i>793.1</i>	<i>816.6</i>
<i>Other Residential*</i>	<i>17.2</i>	<i>20.3</i>
<b>RESIDENTIAL TOTAL</b>	<b>1,287.3</b>	<b>1,324.4</b>

#### ADP by Region

<u>Region</u>	<u>October</u>	<u>YTD</u>
Central	539.0	555.6
Northeast	340.1	351.0
Southern	285.6	295.6
Western	122.6	122.1
Total	1287.3	1324.4

\*Includes Group Homes, Job Corps, Hospitals, Mental Health Institutes, Shelter Care, etc.

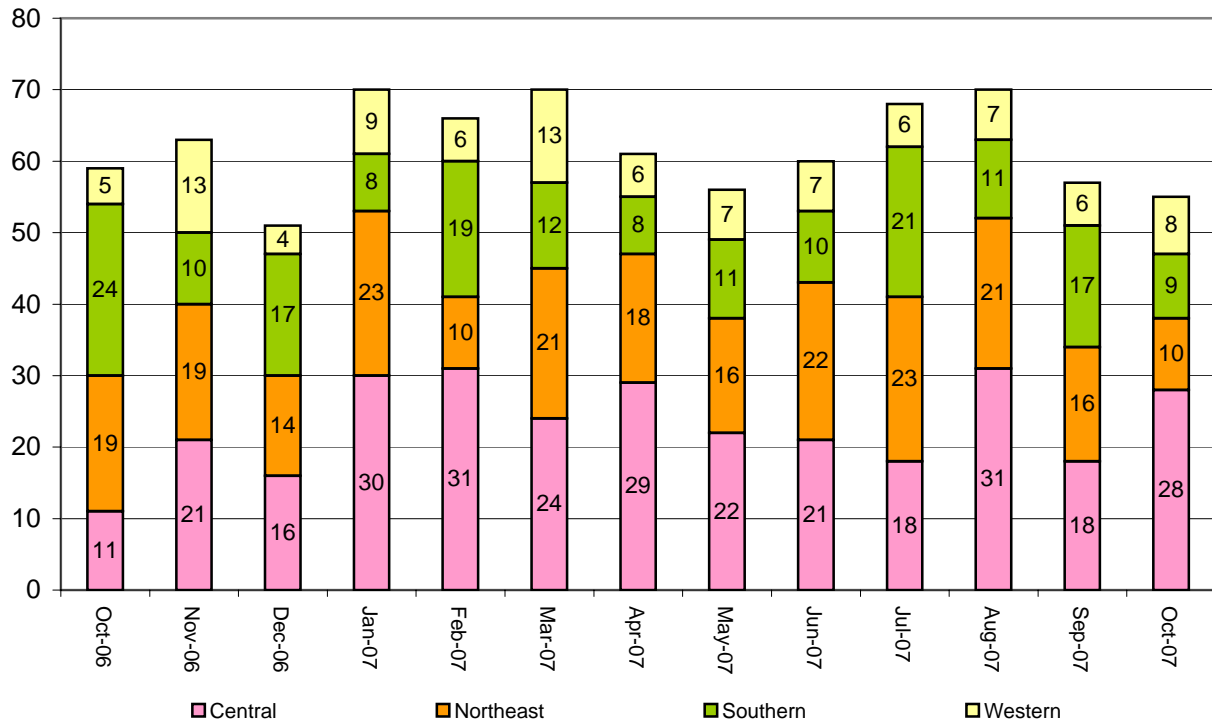
# October 2007 DYC Population Report

## IV. New Commitments

### New Commitments by Region

	<u>October 2007</u>	<u>YTD</u>	<u>October 2006</u>	<u>Last YTD</u>
Central Region	28	99	11	103
Northeast Region	10	70	19	96
Southern Region	9	60	24	77
Western Region	8	28	5	27
<b>New Commitment Total</b>	<b>55</b>	<b>257</b>	<b>59</b>	<b>303</b>

### Monthly New Commitments



# October 2007 DYC Population Report

## V. Parole Services

### Parole ADP by Region

	<u>October 2007</u>	<u>YTD</u>	<u>Last YTD</u>
Central Region	222.6	211.0	227.6
Northeast Region	151.1	141.5	141.9
Southern Region	105.1	96.6	94.9
Western Region	55.0	61.0	56.5
<b>Parole Total</b>	<b>533.8</b>	<b>510.0</b>	<b>520.9</b>

### Parole Intakes

### Parole Discharges

### Parole LOS

	<u>October 2007</u>	<u>YTD</u>	<u>October 2007</u>	<u>YTD</u>	<u>YTD</u>
Central Region	25	133	29	122	6.7
Northeast Region	21	98	10	70	6.8
Southern Region	22	77	14	49	6.6
Western Region	4	23	7	41	6.4
<b>Parole Total</b>	<b>72</b>	<b>331</b>	<b>60</b>	<b>282</b>	<b>6.7</b>

### Monthly Parole ADP

