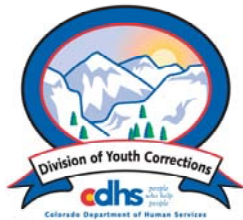


SEPTEMBER 2007 MONTHLY POPULATION REPORT

Prepared by the Division of Youth Corrections Research and Evaluation Unit October 31, 2007



Colorado Department of Human Services
Division of Youth Corrections

Working with Colorado Communities to Achieve Justice

September 2007

DYC Population Report

I.	Summary Population Data	1
II.	Detention ADP by Facility	2
III.	Commitment Services	
	A. State and Contract Secure ADP by Facility	3
	B. Community/Other Residential ADP by Facility	4
IV.	New Commitments	5
V.	Parole Services	6

September 2007 DYC Population Report

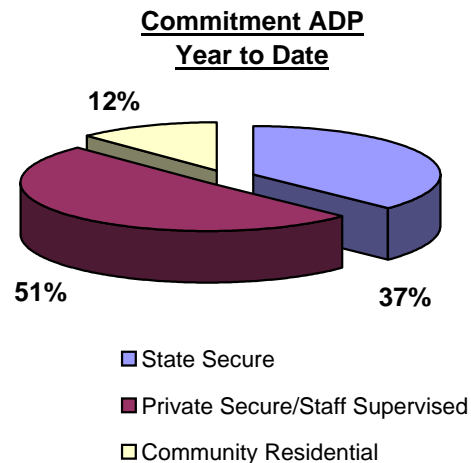
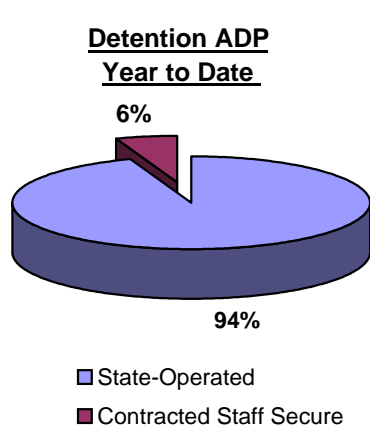
I. Summary Population Data*

DETAINED YOUTH	Average Daily Population (ADP)		Length of Stay (LOS)
	September 2007	YTD	YTD
State-Operated	392.5	382.2	13.6 days
Contracted Staff Secure	22.1	22.3	14.7 days
Total Detained	414.6	404.4	13.7 days

COMMITTED YOUTH	Average Daily Population (ADP)		Length of Stay (LOS)
	September 2007	YTD	YTD
State Secure	476.7	491.0	
Private Secure/Staff Supervised	654.3	664.6	
Community Residential	155.8	159.4	
Other Residential**	21.7	21.8	
Total Committed Residential	1,308.7	1,336.9	17.9 months
<i>Committed Residential w/o Boulder</i>	<i>1,301.9</i>	<i>1,329.7</i>	

PAROLED YOUTH	Average Daily Population (ADP)		Length of Stay (LOS)
	September 2007	YTD	YTD
Total Paroled	526.8	501.1	6.5 months

TOTAL STATEWIDE ADP	September 2007	YTD
	2,250.1	2,242.4



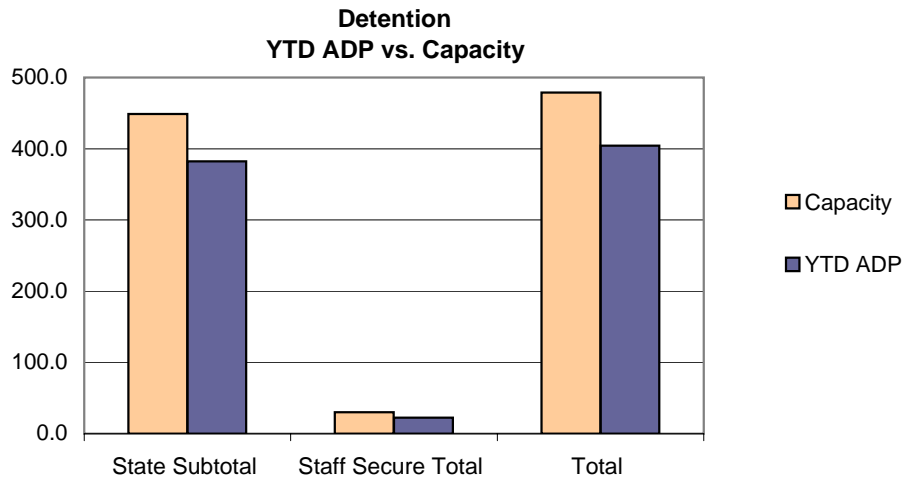
*Due to rounding, totals shown may not be an exact sum of the subtotals

**Includes Group Homes, Job Corps, Hospitals, Mental Health Institutes, Shelter Care, etc.

September 2007 DYC Population Report

II. Detention Data by Facility

Facility	Average Daily Population				New Admissions		YTD LOS in Days
	Operating Capacity	September 2007	YTD	YTD % of Capacity	September 2007	YTD	LOS
<i>State Operated Detention</i>							
Adams	29	25.0	22.3	76.8%	76	194	9.9
Gilliam	73	68.9	68.5	93.8%	116	331	18.2
Grand Mesa	24	20.8	20.4	85.1%	34	116	15.4
Marvin Foote	96	89.2	85.5	89.0%	164	507	15.6
Mount View	60	44.4	44.8	74.6%	110	301	13.6
Platte Valley	69	64.8	63.8	92.5%	138	433	12.2
Pueblo	40	36.7	34.2	85.4%	92	263	12.0
Spring Creek	58	42.8	42.8	73.8%	110	351	11.0
<i>State Subtotal</i>	<i>449</i>	<i>392.5</i>	<i>382.2</i>	<i>85.1%</i>	<i>840</i>	<i>2,496</i>	<i>13.6</i>
<i>Staff Secure Detention</i>							
Brown Center	2	0.7	1.3	65.5%	2	5	21.6
Hilltop	5	3.4	3.8	75.4%	6	19	25.0
Midway (Remington)	8	5.4	6.1	75.9%	12	50	12.3
Prowers	1	0.0	0.3	27.0%	0	2	12.7
Robert DeNier	9	8.2	7.4	82.0%	12	45	15.1
Youthtrack San Luis Valley	5	4.4	3.5	69.8%	7	27	10.1
<i>Staff Secure Total</i>	<i>30</i>	<i>22.1</i>	<i>22.3</i>	<i>74.3%</i>	<i>39</i>	<i>148</i>	<i>14.7</i>
TOTAL	479	414.6	404.4	84.4%	879	2,644	13.7



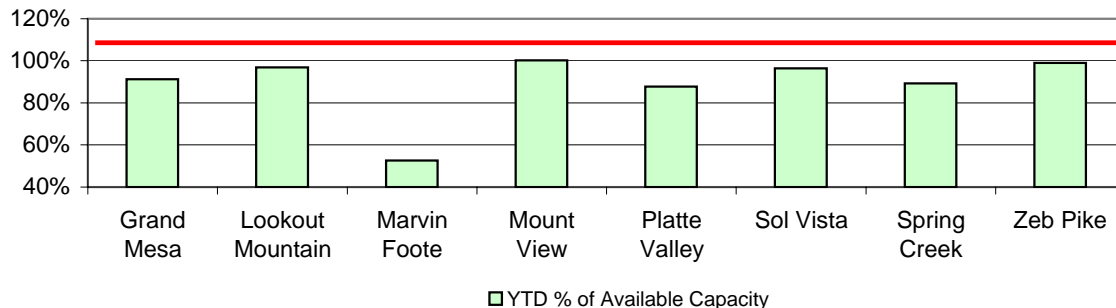
September 2007 DYC Population Report

III. Commitment Services

A. State and Contract Secure ADP by Facility

<u>Facility</u>	<u>Operational Capacity</u>	<u>September 2007</u>	<u>YTD</u>	<u>YTD % of Capacity</u>	<u>YTD % of Available Capacity</u>
State Secure					
Adams	0	0.2	0.1	N/A	N/A
Gilliam	0	3.1	1.1	N/A	N/A
Grand Mesa	44	33.7	40.2	91.3%	91.3%
Lookout	214	201.4	207.4	96.9%	96.9%
Marvin Foote	22	11.4	11.6	52.7%	52.7%
Mount View	73	75.9	73.2	100.3%	100.3%
Platte Valley	66	56.3	57.9	87.8%	87.8%
Pueblo	0	0.2	0.5	N/A	N/A
Sol Vista	20	17.9	19.3	96.5%	96.5%
Spring Creek	45	37.9	40.2	89.3%	89.3%
Zeb Pike	40	38.8	39.6	99.1%	99.1%
<i>State Subtotal</i>	<i>524.0</i>	<i>476.7</i>	<i>491.0</i>	<i>93.7%</i>	<i>93.7%</i>
Contract Secure/Staff Supervised					
Alternative Homes For Youth - Greeley		7.8	8.3		
Betty K. Marler Center		39.1	37.6		
Brown Center		4.1	3.9		
Cedar Springs		1.4	1.8		
Childrens Ark		9.5	9.4		
Devereux Cleo Wallace		24.1	24.9		
El Pueblo Ranch		4.0	5.3		
Excelsior Youth Center		0.0	0.6		
Glen Mills Schools		1.0	1.0		
Griffith Center (SR)		2.6	3.6		
Griffith Center, Grand Ave Girls (WR)		5.2	4.6		
Hilltop (Residential Youth Services)		11.2	10.6		
Jefferson Hills		36.3	37.4		
Jefferson Hills Aurora		59.0	59.3		
Kidz Ark Sterling		2.2	2.8		
Mountain Star Center		3.9	4.0		
Ridge View		407.3	410.3		
Robert DeNier		17.4	17.0		
Southern Peaks		18.4	22.2		
<i>Contract Secure Subtotal</i>		<i>654.3</i>	<i>664.6</i>		

**State Secure Commitment
Percent of Available Capacity by Facility**



September 2007

DYC Population Report

III. Commitment Services Continued

B. Community/Other Residential APD by Facility, ADP by Region

<u>Facility</u>	<u>September</u> <u>2007</u>	<u>YTD</u>
Community		
Dale House Project	9.4	9.3
Daybreak & Daybreak Princeton	5.0	4.5
Denver Area Youth Services (DAYS)	7.9	10.2
Griffith Centers (SR)	15.6	13.5
Job Corps	0.9	0.6
Kidz Ark New Raymer Ranch	1.0	1.0
Longmont Community Treatment Center	0.3	0.8
Lost and Found Inc., Arvada	7.7	7.1
Lost and Found Inc., Morrison	6.5	6.5
Maple Star Colorado	1.0	1.0
Marilee Center	7.3	6.8
Mt Evans Qualifying House	6.8	9.1
Reflections For Youth Inc., Prairie View	2.0	2.0
Reflections For Youth Inc., Wilderness	0.4	0.2
ROP - Canyon State Academy	1.0	1.0
Synergy Administration	7.9	7.9
Third Way Center	2.6	2.8
Third Way Center, Pontiac	4.4	3.4
Third Way Center, York	4.4	4.8
Third Way Center, Lincoln	3.9	4.3
Touchton Foster Home (Boulder County)	0.4	0.1
Turning Point Center For Youth and Family Development	5.0	3.1
Turning Point Center (Boys Residential)	16.0	15.7
Turning Point, Mathews St.	6.7	7.1
Youthtrack, Jeffco	4.3	5.5
Youthtrack, San Luis Valley	3.8	3.2
Youthtrack, Work and Learn	9.0	10.2
Youth Ventures	14.6	17.8
<i>Community Subtotal</i>	<i>155.8</i>	<i>159.4</i>
<i>Private Contract Total</i>	<i>810.2</i>	<i>824.0</i>
<i>Other Residential*</i>	<i>21.7</i>	<i>21.8</i>
RESIDENTIAL TOTAL	1,308.7	1,336.9

ADP by Region

<u>Region</u>	<u>September</u>	<u>YTD</u>
Central	551.4	560.1
Northeast	346.5	355.7
Southern	289.2	298.3
Western	121.6	122.8
Total	1308.7	1336.9

*Includes Group Homes, Job Corps, Hospitals, Mental Health Institutes, Shelter Care, etc.

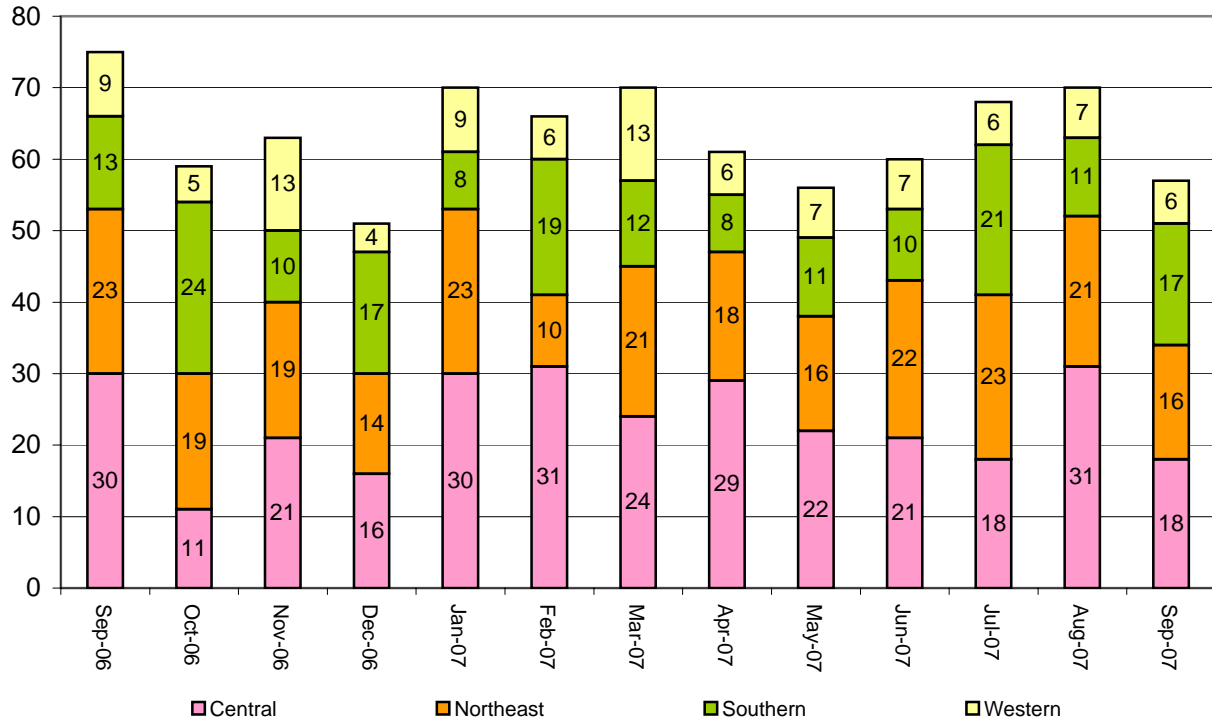
September 2007 DYC Population Report

IV. New Commitments

New Commitments by Region

	<u>September 2007</u>	<u>YTD</u>	<u>September 2006</u>	<u>Last YTD</u>
Central Region	18	71	30	90
Northeast Region	16	60	23	77
Southern Region	17	51	13	53
Western Region	6	20	9	22
New Commitment Total	57	202	75	242

Monthly New Commitments



September 2007 DYC Population Report

V. Parole Services

Parole ADP by Region

	<u>September 2007</u>	<u>YTD</u>	<u>Last YTD</u>
Central Region	215.9	207.1	225.0
Northeast Region	150.2	137.4	136.4
Southern Region	100.7	92.8	93.9
Western Region	60.0	63.8	57.3
Parole Total	526.8	501.1	512.6

Parole Intakes

Parole Discharges

Parole LOS

	<u>September 2007</u>		<u>September 2007</u>		<u>YTD</u>
		<u>YTD</u>		<u>YTD</u>	
Central Region	37	108	32	94	6.6
Northeast Region	25	78	24	60	6.9
Southern Region	20	54	14	35	5.7
Western Region	4	19	12	34	6.4
Parole Total	86	259	82	223	6.5

Monthly Parole ADP

