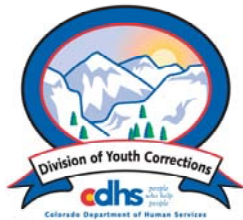


AUGUST 2007 MONTHLY POPULATION REPORT

Prepared by the Division of Youth Corrections Research and Evaluation Unit September 20, 2007



Colorado Department of Human Services
Division of Youth Corrections

Working with Colorado Communities to Achieve Justice

August 2007

DYC Population Report

I.	Summary Population Data	1
II.	Detention ADP by Facility	2
III.	Commitment Services	
	A. State and Contract Secure ADP by Facility	3
	B. Community/Other Residential ADP by Facility	4
IV.	New Commitments	5
V.	Parole Services	6

August 2007 DYC Population Report

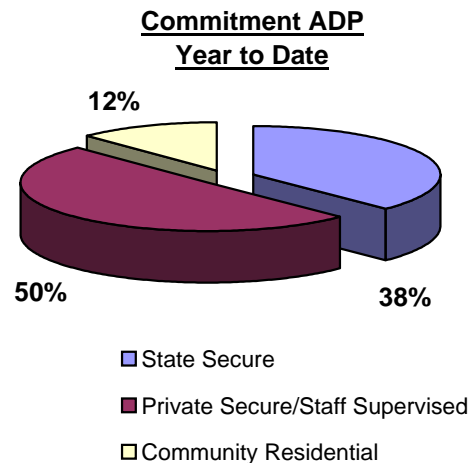
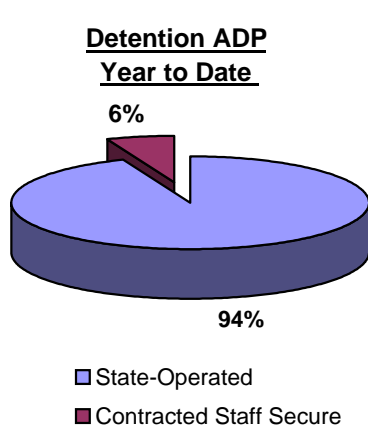
I. Summary Population Data*

DETAINED YOUTH	Average Daily Population (ADP)		Length of Stay (LOS)
	August 2007	YTD	YTD
State-Operated	367.9	376.1	14.1 days
Contracted Staff Secure	22.8	24.0	14.1 days
Total Detained	390.7	400.0	14.1 days

COMMITTED YOUTH	Average Daily Population (ADP)		Length of Stay (LOS)
	August 2007	YTD	YTD
State Secure	498.4	499.2	
Private Secure/Staff Supervised	658.5	668.9	
Community Residential	161.4	161.6	
Other Residential**	18.2	17.6	
Total Committed Residential	1,336.4	1,347.3	18.3 months
<i>Committed Residential w/o Boulder</i>	<i>1,329.2</i>	<i>1,339.8</i>	

PAROLED YOUTH	Average Daily Population (ADP)		Length of Stay (LOS)
	August 2007	YTD	YTD
Total Paroled	502.7	490.0	6.2 months

TOTAL STATEWIDE ADP	August 2007	YTD
	2,229.8	2,237.4



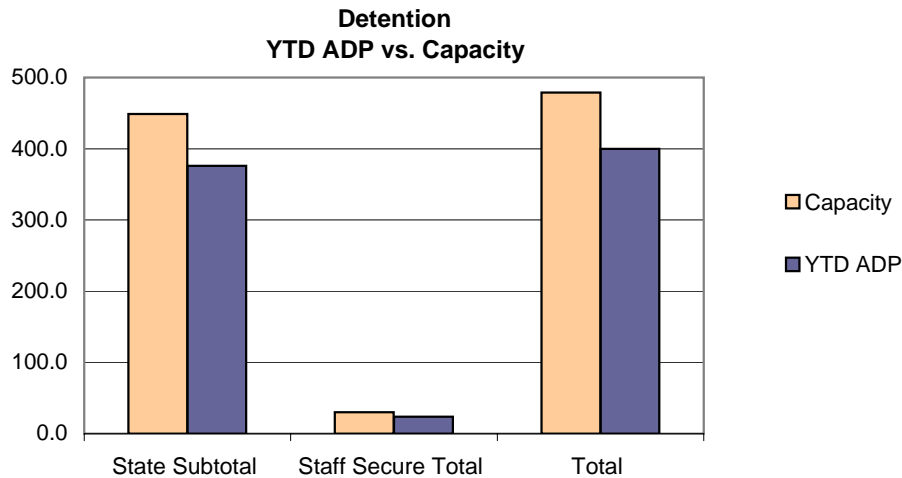
*Due to rounding, totals shown may not be an exact sum of the subtotals

**Includes Group Homes, Job Corps, Hospitals, Mental Health Institutes, Shelter Care, etc.

August 2007 DYC Population Report

II. Detention Data by Facility

Facility	Average Daily Population			New Admissions		YTD LOS in Days	
	Operating Capacity	August 2007	YTD	YTD % of Capacity	August 2007	YTD	LOS
<i>State Operated Detention</i>							
Adams	29	21.7	20.8	71.8%	67	118	10.2
Gilliam	73	64.9	67.2	92.0%	95	215	19.7
Grand Mesa	24	18.8	20.3	84.7%	39	82	12.2
Marvin Foote	96	82.2	83.9	87.4%	173	343	15.8
Mount View	60	41.6	45.1	75.1%	98	191	15.2
Platte Valley	69	61.2	63.3	91.8%	154	295	14.4
Pueblo	40	33.5	32.9	82.3%	85	171	10.6
Spring Creek	58	43.9	42.6	73.5%	127	241	10.9
<i>State Subtotal</i>	<i>449</i>	<i>367.9</i>	<i>376.1</i>	<i>83.8%</i>	<i>838</i>	<i>1,656</i>	<i>14.1</i>
<i>Staff Secure Detention</i>							
Brown Center	2	1.5	1.6	82.0%	1	3	11.7
Hilltop	5	4.0	4.0	79.4%	7	13	29.6
Midway (Remington)	8	6.2	6.5	80.8%	19	37	8.7
Prowers	1	0.1	0.4	41.0%	1	2	4.0
Robert DeNier	9	9.0	8.4	93.3%	17	34	19.2
Youthtrack San Luis Valley	5	2.0	3.1	61.6%	9	20	7.7
<i>Staff Secure Total</i>	<i>30</i>	<i>22.8</i>	<i>24.0</i>	<i>79.9%</i>	<i>54</i>	<i>109</i>	<i>14.1</i>
TOTAL	479	390.7	400.0	83.5%	892	1,765	14.1



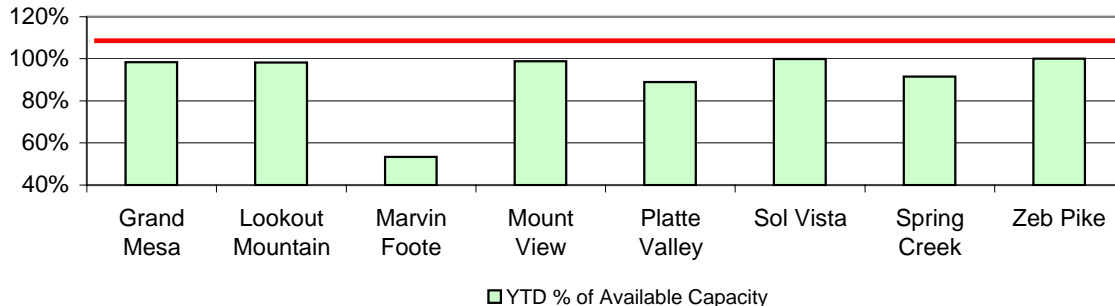
August 2007 DYC Population Report

III. Commitment Services

A. State and Contract Secure ADP by Facility

<u>Facility</u>	<u>Operational Capacity</u>	<u>August 2007</u>	<u>YTD</u>	<u>YTD % of Capacity</u>	<u>YTD % of Available Capacity</u>
State Secure					
Adams	0	0.2	0.1	N/A	N/A
Gilliam	0	1.0	0.9	N/A	N/A
Grand Mesa	44	42.3	43.3	98.4%	98.4%
Lookout	214	207.7	210.3	98.3%	98.3%
Marvin Foote	22	13.0	11.7	53.4%	53.4%
Mount View	73	73.6	72.1	98.8%	98.8%
Platte Valley	66	58.8	58.7	89.0%	89.0%
Pueblo	0	0.1	0.8	N/A	N/A
Sol Vista	20	20.0	20.0	99.9%	99.9%
Spring Creek	45	41.8	41.2	91.6%	91.6%
Zeb Pike	40	39.9	40.0	100.0%	100.0%
<i>State Subtotal</i>	<i>524.0</i>	<i>498.4</i>	<i>499.2</i>	<i>95.3%</i>	<i>95.3%</i>
Contract Secure/Staff Supervised					
Alternative Homes For Youth - Greeley		9.0	8.6		
Betty K. Marler Center		34.8	36.8		
Brown Center		3.5	3.8		
Cedar Springs		2.0	2.0		
Childrens Ark		8.7	9.3		
Devereux Cleo Wallace		24.0	25.4		
El Pueblo Ranch		5.0	6.0		
Excelsior Youth Center		0.7	0.9		
Glen Mills Schools		1.0	1.0		
Griffith Center (SR)		3.4	4.1		
Griffith Center, Grand Ave Girls (WR)		5.3	4.2		
Hilltop Youth Services		10.1	10.1		
Jefferson Hills		37.4	37.9		
Jefferson Hills Aurora		59.3	59.5		
Kidz Ark Sterling		3.1	3.1		
Mountain Star Center		4.0	4.0		
Ridge View		409.8	411.8		
Robert DeNier		15.3	16.6		
Southern Peaks		22.3	24.0		
<i>Contract Secure Subtotal</i>		<i>658.5</i>	<i>668.9</i>		

**State Secure Commitment
Percent of Available Capacity by Facility**



August 2007

DYC Population Report

III. Commitment Services Continued

B. Community/Other Residential APD by Facility, ADP by Region

<u>Facility</u>	<u>August</u> <u>2007</u>	<u>YTD</u>
Community		
Dale House Project	9.4	9.2
Daybreak & Daybreak Princeton	4.9	4.3
Denver Area Youth Services (DAYS)	11.9	12.0
Griffith Centers (SR)	12.0	12.5
Job Corps	0.1	0.5
Kidz Ark New Raymer Ranch	1.0	1.0
Longmont Community Treatment Center	1.0	1.0
Lost and Found Inc., Arvada	7.5	6.8
Lost and Found Inc., Morrison	6.9	6.6
Maple Star Colorado	1.0	1.0
Marilee Center	6.6	6.5
Mt Evans Qualifying House	9.7	10.1
Reflections For Youth Inc., Prairie View	2.0	2.0
Reflections For Youth Inc., Wilderness	0.3	0.1
ROP - Canyon State Academy	1.0	1.0
Synergy Administration	8.0	7.8
Third Way Center	3.0	2.9
Third Way Center, Pontiac	2.9	2.9
Third Way Center, York	5.0	4.9
Third Way Center, Lincoln	4.5	4.5
Turning Point for Drugs and Alcohol	1.0	1.0
Turning Point Center For Youth and Family Development	2.9	2.1
Turning Point Center (Boys Residential)	13.5	14.6
Turning Point, Mathews St.	8.4	7.3
Youthtrack, Jeffco	5.7	6.0
Youthtrack, San Luis Valley	2.8	3.0
Youthtrack, Work and Learn	10.8	10.7
Youth Ventures	17.7	19.2
<i>Community Subtotal</i>	<i>161.4</i>	<i>161.6</i>
<i>Private Contract Total</i>	<i>819.9</i>	<i>830.5</i>
<i>Other Residential*</i>	<i>18.2</i>	<i>17.6</i>
RESIDENTIAL TOTAL	1,336.4	1,347.3

ADP by Region

<u>Region</u>	<u>August</u> <u>2007</u>	<u>YTD</u>
Central	562.6	566.0
Northeast	355.9	358.5
Southern	299.2	304.3
Western	118.8	118.5
Total	1336.4	1347.3

**Includes Group Homes, Job Corps, Hospitals, Mental Health Institutes, Shelter Care, etc.*

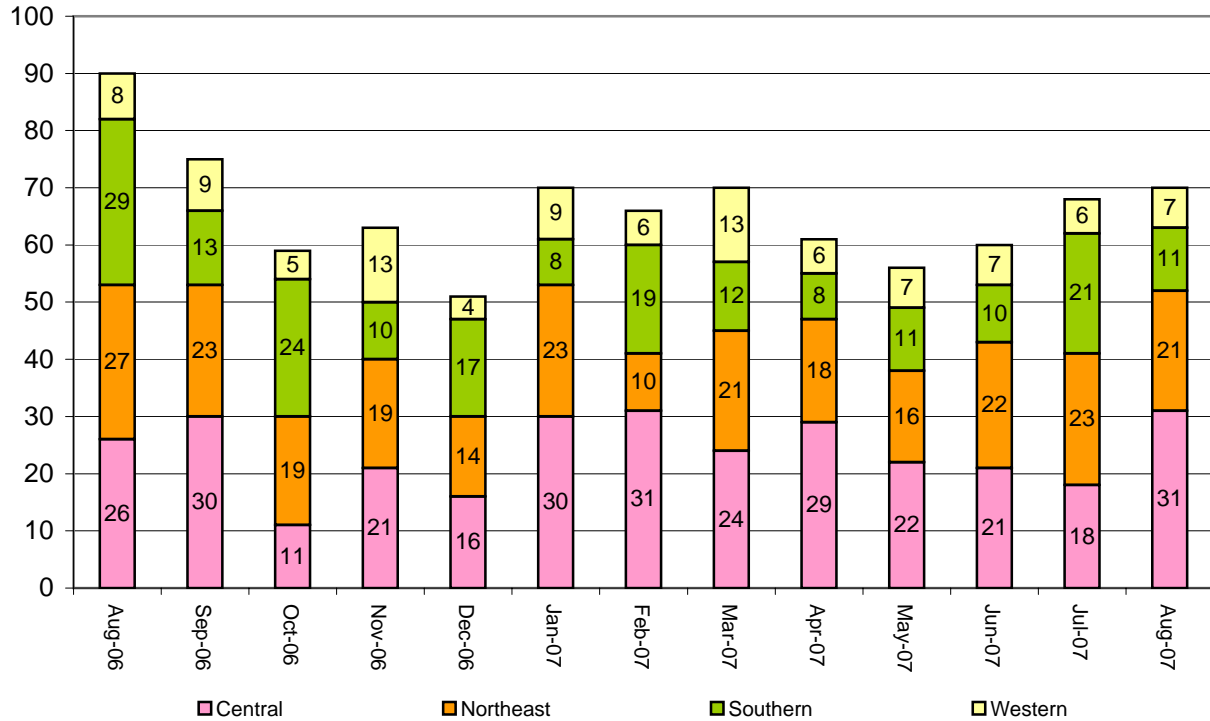
August 2007 DYC Population Report

IV. New Commitments

New Commitments by Region

	<u>August 2007</u>	<u>YTD</u>	<u>August 2006</u>	<u>Last YTD</u>
Central Region	31	53	26	53
Northeast Region	21	44	27	52
Southern Region	11	32	29	38
Western Region	7	14	8	13
New Commitment Total	70	143	90	156

Monthly New Commitments



August 2007 DYC Population Report

V. Parole Services

Parole ADP by Region

	<u>August 2007</u>	<u>YTD</u>	<u>Last YTD</u>
Central Region	208.9	202.8	225.4
Northeast Region	135.3	130.8	129.7
Southern Region	93.9	91.0	90.5
Western Region	64.5	65.3	56.8
Parole Total	502.7	490.0	502.4

Parole Intakes

Parole Discharges

Parole LOS

	<u>August 2007</u>	<u>YTD</u>	<u>August 2007</u>	<u>YTD</u>	<u>YTD</u>
Central Region	43	70	23	58	6.4
Northeast Region	28	52	13	34	6.4
Southern Region	21	35	9	18	5.5
Western Region	11	14	11	21	6.4
Parole Total	103	171	56	131	6.2

Monthly Parole ADP

