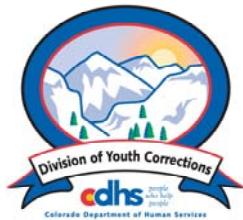


JULY 2007

MONTHLY POPULATION REPORT

Prepared by the Division of Youth Corrections Research and Evaluation Unit August 20, 2007



Colorado Department of Human Services
Division of Youth Corrections

Working with Colorado Communities to Achieve Justice

July 2007

DYC Population Report

I.	Summary Population Data	1
II.	Detention ADP by Facility	2
III.	Commitment Services	
	A. State and Contract Secure ADP by Facility	3
	B. Community/Other Residential ADP by Facility	4
IV.	New Commitments	5
V.	Parole Services	6

July 2007 DYC Population Report

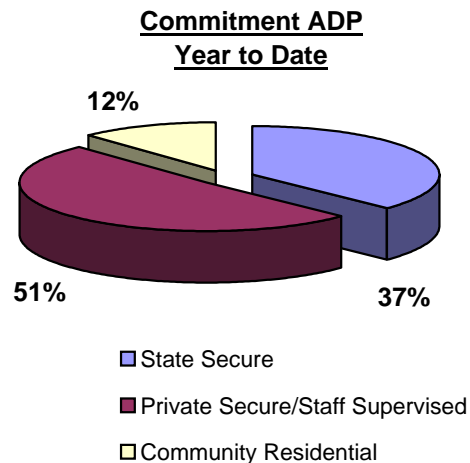
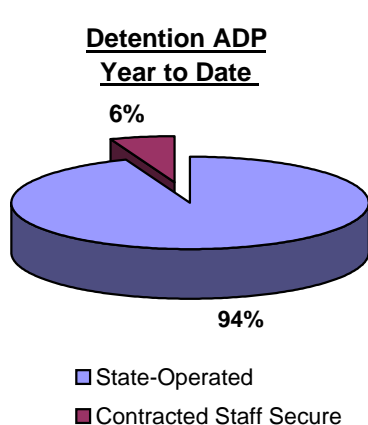
I. Summary Population Data*

DETAINED YOUTH	Average Daily Population (ADP)		Length of Stay (LOS)
	July 2007	YTD	YTD
State-Operated	382.6	382.6	13.5 days
Contracted Staff Secure	24.2	24.2	15.4 days
Total Detained	406.8	406.8	13.6 days

COMMITTED YOUTH	Average Daily Population (ADP)		Length of Stay (LOS)
	July 2007	YTD	YTD
State Secure	499.8	499.8	
Private Secure/Staff Supervised	681.4	681.4	
Community Residential	161.3	161.3	
Other Residential**	20.2	20.2	
Total Committed Residential	1,362.6	1,362.6	18.2 months
<i>Committed Residential w/o Boulder</i>	<i>1,354.9</i>	<i>1,354.9</i>	

PAROLED YOUTH	Average Daily Population (ADP)		Length of Stay (LOS)
	July 2007	YTD	YTD
Total Paroled	479.1	479.1	6.4 months

TOTAL STATEWIDE ADP	2,248.5	2,248.5
----------------------------	----------------	----------------



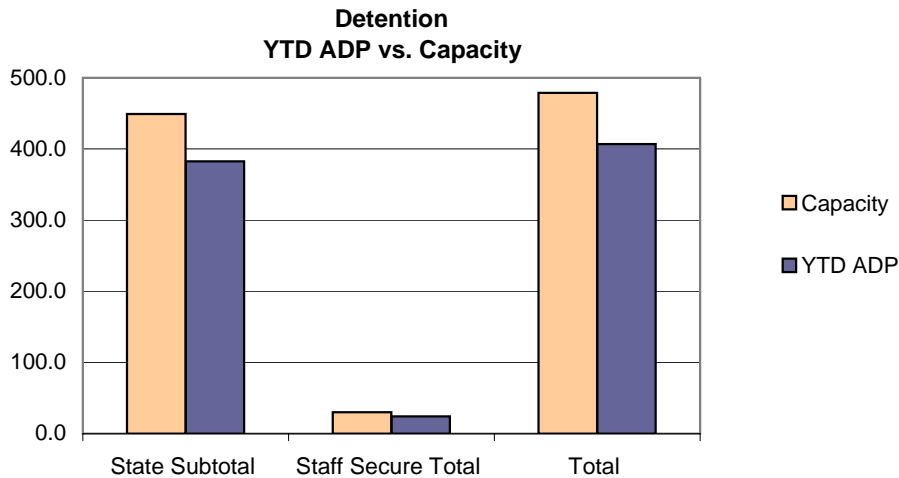
*Due to rounding, totals shown may not be an exact sum of the subtotals

**Includes Group Homes, Job Corps, Hospitals, Mental Health Institutes, Shelter Care, etc.

July 2007 DYC Population Report

II. Detention Program Services A. Detention Data by Facility

Facility	Operating Capacity	Average Daily Population		YTD % of Capacity	New Admissions		YTD LOS in Days
		July 2007	YTD		July 2007	YTD	
<i>State Operated Detention</i>							
Adams	29	19.9	19.9	68.7%	51	51	10.7
Gilliam	73	69.1	69.1	94.6%	120	120	14.7
Grand Mesa	24	21.7	21.7	90.3%	43	43	19.3
Marvin Foote	96	85.4	85.4	88.9%	170	170	16.3
Mount View	60	48.0	48.0	79.9%	93	93	13.9
Platte Valley	69	65.3	65.3	94.6%	141	141	10.9
Pueblo	40	32.1	32.1	80.3%	86	86	12.8
Spring Creek	58	41.3	41.3	71.2%	114	114	10.8
<i>State Subtotal</i>	<i>449</i>	<i>382.6</i>	<i>382.6</i>	<i>85.2%</i>	<i>818</i>	<i>818</i>	<i>13.5</i>
<i>Staff Secure Detention</i>							
Brown Center	2	1.8	1.8	90.0%	2	2	21.0
Hilltop	5	3.9	3.9	77.4%	6	6	32.0
Midway (Remington)	8	6.7	6.7	84.0%	19	19	13.9
Prowers	1	0.9	0.9	91.0%	1	1	0.0
Robert DeNier	9	6.8	6.8	75.3%	17	17	11.5
Youthtrack San Luis Valley	5	4.1	4.1	82.2%	11	11	14.6
<i>Staff Secure Total</i>	<i>30</i>	<i>24.2</i>	<i>24.2</i>	<i>80.6%</i>	<i>56</i>	<i>56</i>	<i>15.4</i>
TOTAL	479	406.8	406.8	84.9%	874	874	13.6



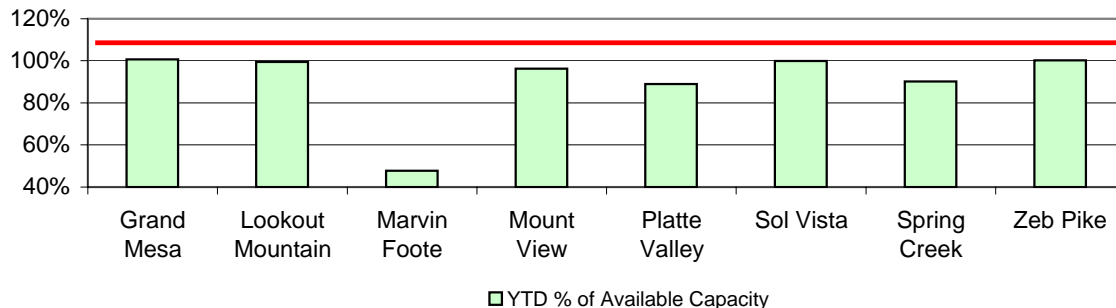
July 2007 DYC Population Report

III. Commitment Services

A. State and Contract Secure ADP by Facility

<u>Facility</u>	<u>Operational Capacity</u>	<u>July 2007</u>	<u>YTD</u>	<u>YTD % of Capacity</u>	<u>YTD % of Available Capacity</u>
State Secure					
Adams	0	0.0	0.0	N/A	N/A
Gilliam	0	1.0	1.0	N/A	N/A
Grand Mesa	44	44.3	44.3	100.7%	100.7%
Lookout	214	212.9	212.9	99.5%	99.5%
Marvin Foote	22	10.5	10.5	47.7%	47.7%
Mount View	73	70.2	70.2	96.2%	96.2%
Platte Valley	66	58.7	58.7	88.9%	88.9%
Pueblo	0	1.4	1.4	N/A	N/A
Sol Vista	20	20.0	20.0	99.9%	99.9%
Spring Creek	45	40.6	40.6	90.2%	90.2%
Zeb Pike	40	40.1	40.1	100.3%	100.3%
<i>State Subtotal</i>	<i>524.0</i>	<i>499.8</i>	<i>499.8</i>	<i>95.4%</i>	<i>95.4%</i>
Contract Secure/Staff Supervised					
Alternative Homes For Youth - Greeley		8.2	8.2		
Betty K. Marler Center		38.8	38.8		
Brown Center		4.5	4.5		
Cedar Springs		2.0	2.0		
Childrens Ark		9.9	9.9		
Devereux Cleo Wallace		26.7	26.7		
El Pueblo Ranch		6.9	6.9		
Excelsior Youth Center		1.0	1.0		
Glen Mills Schools		1.0	1.0		
Griffith Center (SR)		4.8	4.8		
Griffith Center, Grand Ave Girls (WR)		3.0	3.0		
Hilltop Youth Services		11.2	11.2		
Jefferson Hills		38.4	38.4		
Jefferson Hills Aurora		60.4	60.4		
Kidz Ark Sterling		3.2	3.2		
Mountain Star Center		4.0	4.0		
Ridge View		413.3	413.3		
Robert DeNier		17.9	17.9		
Southern Peaks		25.7	25.7		
Turning Point Center (MH)		0.5	0.5		
<i>Contract Secure Subtotal</i>		<i>681.4</i>	<i>681.4</i>		

**State Secure Commitment
Percent of Available Capacity by Facility**



July 2007

DYC Population Report

III. Commitment Services Continued

B. Community/Other Residential APD by Facility, ADP by Region

<u>Facility</u>	<u>July 2007</u>	<u>YTD</u>
Community		
Dale House Project	9.0	9.0
Daybreak & Daybreak Princeton	3.7	3.7
Denver Area Youth Services (DAYS)	12.1	12.1
Griffith Centers (SR)	13.1	13.1
Job Corps	1.0	1.0
Kidz Ark New Raymer Ranch	1.0	1.0
Longmont Community Treatment Center	1.0	1.0
Lost and Found Inc., Arvada	6.1	6.1
Lost and Found Inc., Morrison	6.2	6.2
Maple Star Colorado	0.9	0.9
Marilee Center	6.5	6.5
Mt Evans Qualifying House	10.4	10.4
Reflections For Youth Inc., Prairie View	2.0	2.0
ROP - Canyon State Academy	1.0	1.0
Synergy Administration	7.7	7.7
Third Way Center	2.8	2.8
Third Way Center, Pontiac	3.0	3.0
Third Way Center, York	4.9	4.9
Third Way Center, Lincoln	4.5	4.5
Turning Point for Drugs and Alcohol	1.0	1.0
Turning Point Center For Youth and Family Development	0.8	0.8
Turning Point Center (Boys Residential)	15.6	15.6
Turning Point, Mathews St.	6.2	6.2
Youthtrack, Jeffco	6.4	6.4
Youthtrack, San Luis Valley	3.2	3.2
Youthtrack, Work and Learn	10.6	10.6
Youth Ventures	20.6	20.6
<i>Community Subtotal</i>	<i>161.3</i>	<i>161.3</i>
<i>Private Contract Total</i>	<i>842.7</i>	<i>842.7</i>
<i>Other Residential*</i>	<i>20.2</i>	<i>20.2</i>
RESIDENTIAL TOTAL	1,362.6	1,362.6

ADP by Region

Region	July 2007	YTD
Central	570.1	570.1
Northeast	362.4	362.4
Southern	309.5	309.5
Western	120.6	120.6
Total	1362.6	1362.6

*Includes Group Homes, Job Corps, Hospitals, Mental Health Institutes, Shelter Care, etc.

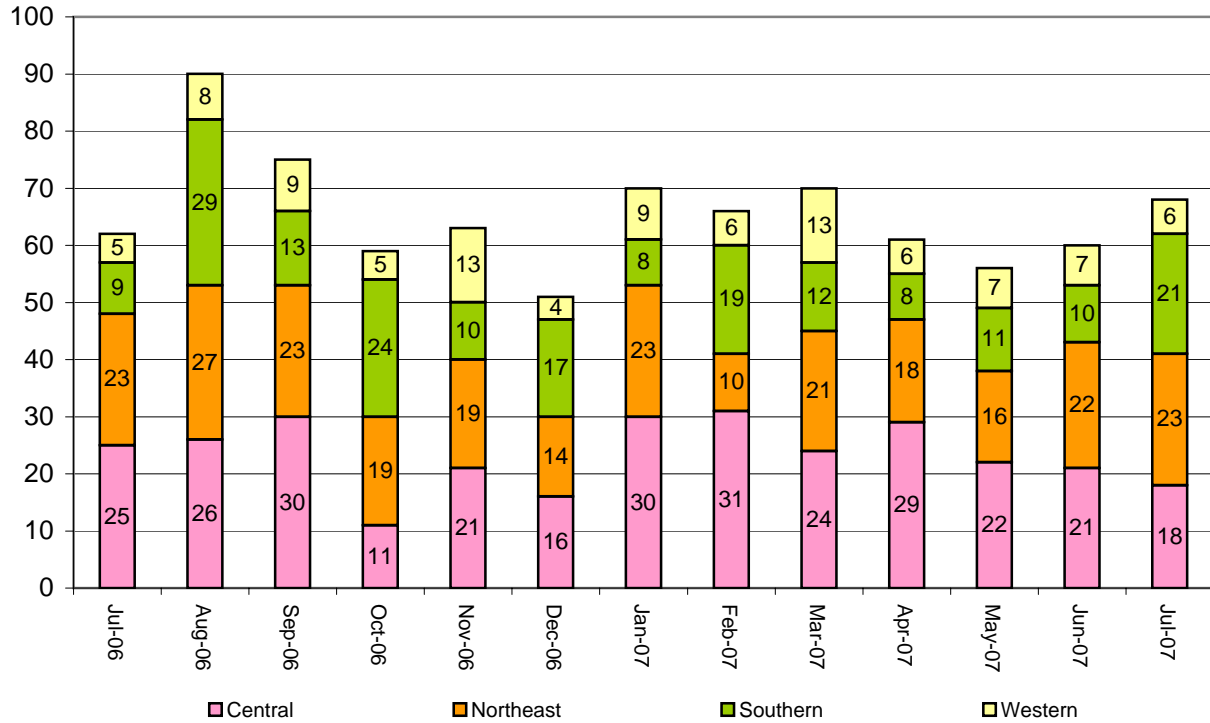
July 2007 DYC Population Report

IV. New Commitments

New Commitments by Region

	<u>July 2007</u>	<u>YTD</u>	<u>July 2006</u>	<u>Last YTD</u>
Central Region	18	18	25	25
Northeast Region	23	23	23	23
Southern Region	21	21	9	9
Western Region	6	6	5	5
New Commitment Total	68	68	62	62

Monthly New Commitments



July 2007 DYC Population Report

V. Parole Services

Parole ADP by Region

	<u>July 2007</u>	<u>YTD</u>	<u>Last YTD</u>
Central Region	194.5	194.5	221.4
Northeast Region	127.4	127.4	126.3
Southern Region	87.8	87.8	87.5
Western Region	69.4	69.4	55.8
Parole Total	479.1	479.1	490.9

Parole Intakes

Parole Discharges

Parole LOS

	<u>July 2007</u>	<u>YTD</u>	<u>July 2007</u>	<u>YTD</u>	<u>YTD</u>
Central Region	27	27	34	34	6.5
Northeast Region	23	23	18	18	7.0
Southern Region	14	14	9	9	5.6
Western Region	4	4	7	7	5.1
Parole Total	68	68	68	68	6.4

Monthly Parole ADP

