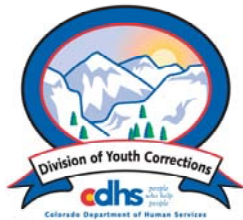


# JUNE 2007 MONTHLY POPULATION REPORT

---

Prepared by the Division of Youth Corrections Research and Evaluation Unit July 17, 2007



**Colorado Department of Human Services**  
**Division of Youth Corrections**

---

Working with Colorado Communities to Achieve Justice

# June 2007

## DYC Population Report

<b>I.</b>	<b>Summary Population Data</b>	<b>1</b>
<b>II.</b>	<b>Detention ADP by Facility</b>	<b>2</b>
<b>III.</b>	<b>Commitment Services</b>	
	A. State and Contract Secure ADP by Facility	<b>3</b>
	B. Community/Other Residential ADP by Facility	<b>4</b>
<b>IV.</b>	<b>New Commitments</b>	<b>5</b>
<b>V.</b>	<b>Parole Services</b>	<b>6</b>

# June 2007 DYC Population Report

## I. Summary Population Data\*

DETAINED YOUTH	Average Daily Population (ADP)		Length of Stay (LOS)
	June 2007	YTD	YTD
State-Operated	398.8	391.4	14.1 days
Contracted Staff Secure	25.1	23.7	13.0 days
<b>Total Detained</b>	<b>423.9</b>	<b>415.0</b>	<b>14.0 days</b>

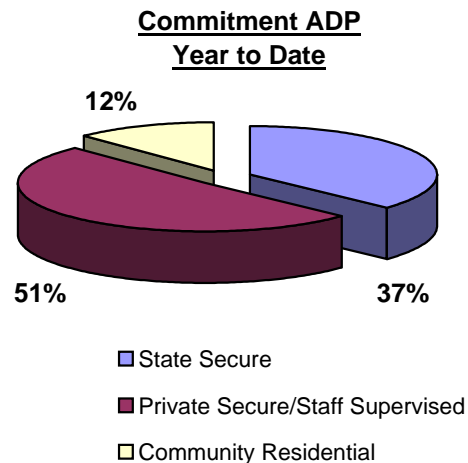
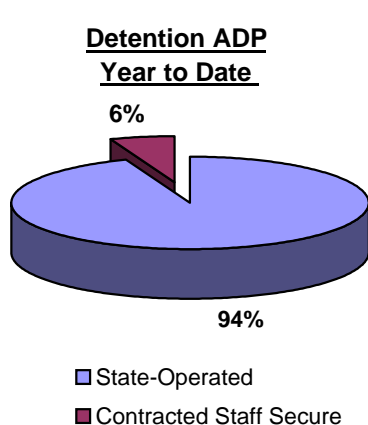
COMMITTED YOUTH	Average Daily Population (ADP)		Length of Stay (LOS)
	June 2007	YTD	YTD
State Secure	504.7	518.6	
Private Secure/Staff Supervised	677.8	717.5	
Community Residential	160.3	170.7	
Other Residential**	16.5	17.7	
<b>Total Committed Residential</b>	<b>1,359.3</b>	<b>1,424.5</b>	<b>19.0 months</b>
<i>Committed Residential w/o Boulder</i>	<i>1,353.7</i>	<i>1,417.6</i>	

PAROLED YOUTH	Average Daily Population (ADP)		Length of Stay (LOS)
	June 2007	YTD	YTD
<b>Total Paroled</b>	<b>483.5</b>	<b>521.7</b>	<b>6.8 months</b>

TOTAL STATEWIDE ADP	June 2007	YTD
	<b>2,266.8</b>	<b>2,361.3</b>



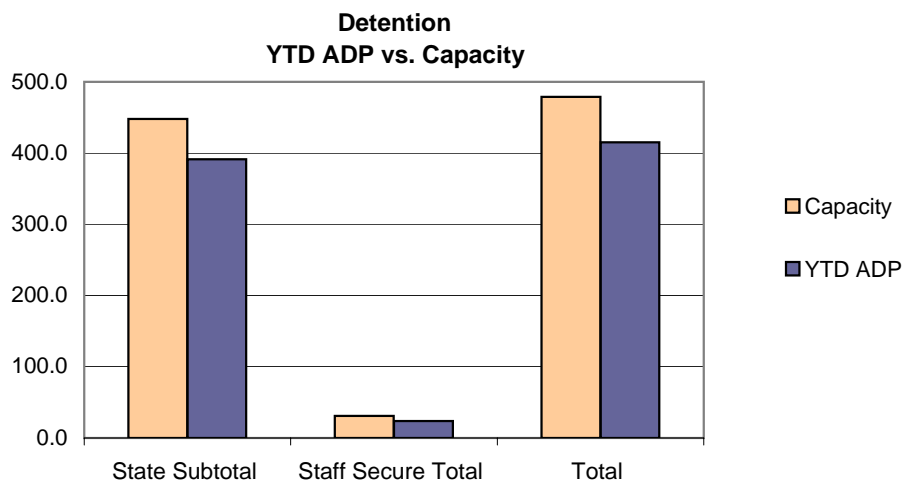
\*Due to rounding, totals shown may not be an exact sum of the subtotals

\*\*Includes Group Homes, Job Corps, Hospitals, Mental Health Institutes, Shelter Care, etc.

# June 2007 DYC Population Report

## II. Detention Program Services A. Detention Data by Facility

Facility	Operating Capacity	Average Daily Population			New Admissions		YTD LOS in Days
		June 2007	YTD	YTD % of Capacity	June 2007	YTD	LOS
<i>State Operated Detention</i>							
Adams	29	24.7	25.9	89.3%	54	729	13.1
Gilliam	70	65.5	63.4	90.6%	115	1,427	15.9
Grand Mesa	24	19.8	20.8	86.5%	45	542	13.2
Marvin Foote	96	84.7	86.6	90.2%	145	1,816	17.3
Mount View	60	52.8	51.1	85.2%	81	1,099	16.3
Platte Valley	69	64.8	63.4	91.9%	157	1,853	12.2
Pueblo	42	37.8	32.5	77.4%	78	934	12.4
Spring Creek	58	48.9	47.6	82.1%	108	1,543	10.9
<i>State Subtotal</i>	<i>448</i>	<i>398.8</i>	<i>391.4</i>	<i>87.4%</i>	<i>783</i>	<i>9,943</i>	<i>14.1</i>
<i>Staff Secure Detention</i>							
Brown Center	2	1.8	1.6	78.5%	5	39	14.1
Griffith (Grand Ave)	2	1.1	1.4	69.0%	4	27	18.9
Hilltop	3	2.8	2.5	81.7%	2	39	20.5
Midway (Remington)	9	6.7	6.8	75.7%	22	254	10.4
Prowers	1	0.5	0.8	76.0%	0	9	31.1
Robert DeNier	9	8.6	7.4	81.9%	13	170	14.4
Youthtrack San Luis Valley	5	3.8	3.3	66.4%	10	109	11.1
<i>Staff Secure Total</i>	<i>31</i>	<i>25.1</i>	<i>23.7</i>	<i>76.3%</i>	<i>56</i>	<i>647</i>	<i>13.0</i>
<b>TOTAL</b>	<b>479</b>	<b>423.9</b>	<b>415.0</b>	<b>86.6%</b>	<b>839</b>	<b>10,590</b>	<b>14.0</b>



# June 2007 DYC Population Report

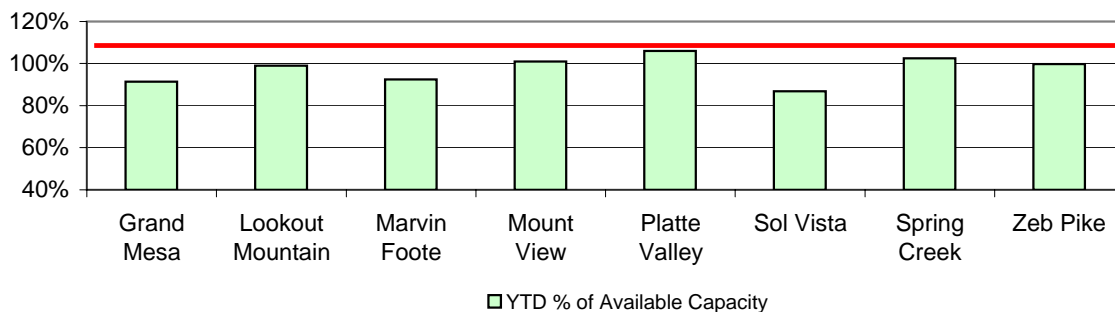
## III. Commitment Services

### A. State and Contract Secure ADP by Facility

<u>Facility</u>	<u>Operational Capacity</u>	<u>June 2007</u>	<u>YTD</u>	<u>YTD % of Capacity</u>	<u>YTD % of Available Capacity</u>
<b>State Secure</b>					
Adams	0	0.3	0.3	N/A	N/A
Gilliam	0	1.4	3.4	N/A	N/A
Grand Mesa	44	41.7	40.2	91.4%	91.4%
Lookout	214	213.1	211.9	99.0%	99.0%
Marvin Foote	22	12.3	20.3	92.4%	92.4%
Mount View	73	76.0	73.7	100.9%	100.9%
Platte Valley	66	60.2	69.9	106.0%	106.0%
Pueblo	0	1.1	1.3	N/A	N/A
Sol Vista*	13.3	20.0	11.6	86.8%	86.8%
Spring Creek	45	38.6	46.2	102.6%	102.6%
Zeb Pike	40	39.9	39.9	99.7%	99.7%
<i>State Subtotal</i>	<i>517.3</i>	<i>504.7</i>	<i>518.6</i>	<i>100.3%</i>	<i>100.3%</i>
<b>Contract Secure/Staff Supervised</b>					
Alternative Homes For Youth - Greeley		6.1	1.5		
Betty K. Marler Center		40.5	39.2		
Brown Center		1.5	2.4		
Cedar Springs		2.0	8.5		
Childrens Ark		9.0	4.5		
Devereux Cleo Wallace		26.3	23.5		
El Pueblo Ranch		7.2	5.2		
Excelsior Youth Center		1.3	1.1		
Glen Mills Schools		1.0	0.7		
Griffith Center (SR)		6.8	13.1		
Griffith Center, Grand Ave Girls (WR)		2.0	5.3		
Griffith Center, Boys (WR)		1.0	3.6		
Hilltop Youth Services		11.9	14.2		
Jefferson Hills		38.8	42.8		
Jefferson Hills Aurora		61.0	63.9		
Kidz Ark Sterling		4.5	5.0		
Mountain Star Center		4.0	4.6		
Ridge View		409.6	430.2		
Robert DeNier		15.4	16.5		
Southern Peaks		28.0	27.9		
Turning Point Center (MH)		0.0	3.9		
<i>Contract Secure Subtotal</i>		<i>677.8</i>	<i>717.5</i>		

\*Full Operating Capacity for Sol Vista is 20

**State Secure Commitment  
Percent of Available Capacity by Facility**



# June 2007

## DYC Population Report

### III. Commitment Services Continued

#### B. Community/Other Residential APD by Facility, ADP by Region

<u>Facility</u>	<u>June 2007</u>	<u>YTD</u>
<b>Community</b>		
Alternative Youth Adventures (AYA)	0.0	17.0
Boulder Community Treatment Center	0.7	0.7
Community Corrections & Work Release	0.0	1.5
Dale House Project	11.4	11.7
Daybreak & Daybreak Princeton	1.8	4.8
Denver Area Youth Services (DAYS)	13.2	10.9
Garfield County Community Corrections	0.0	0.2
Gateway Youth and Family Services	0.0	0.4
Griffith Centers (SR)	12.1	7.1
Griffith Centers (Chins Up)	0.0	0.1
Harmony Host Homes	0.0	0.2
Job Corps	1.0	3.3
Kidz Ark New Raymer Ranch	1.0	0.1
Longmont Community Treatment Center	0.1	0.0
Lost and Found Inc., Arvada	4.3	4.1
Lost and Found Inc., Independent Living	0.0	0.6
Lost and Found Inc., Morrison	4.9	3.3
Maple Star Colorado	0.4	0.5
Marilee Center	4.5	3.0
Mt Evans Qualifying House	11.6	7.3
Reflections For Youth Inc., Prairie View	2.0	2.0
ROP - Canyon State Academy	1.0	0.7
Sobriety House/Stepping Stone	0.0	0.2
Southwest Colorado Community Corrections	0.0	0.2
Synergy Administration	7.2	6.1
Third Way Center	2.1	4.6
Third Way Center, Pontiac	3.7	5.5
Third Way Center, York	5.1	3.8
Third Way Center, Lincoln	3.0	4.3
Turning Point for Drugs and Alcohol	0.5	0.0
Turning Point Center For Youth and Family Development	1.5	1.5
Turning Point Center (Boys Residential)	17.4	20.7
Turning Point, Mathews St.	6.1	6.2
Youthtrack, Jeffco	8.8	8.0
Youthtrack, San Luis Valley	3.0	2.4
Youthtrack, Work and Learn	11.6	11.5
Youth Ventures	20.5	16.3
<i>Community Subtotal</i>	<i>160.3</i>	<i>170.7</i>
<i>Private Contract Total</i>	<i>838.1</i>	<i>888.2</i>
<i>Other Residential*</i>	<i>16.5</i>	<i>17.7</i>
<b>RESIDENTIAL TOTAL</b>	<b>1,359.3</b>	<b>1,424.5</b>

<b>Region</b>	<b>June 2007</b>	<b>YTD</b>
Central	576.6	611.7
Northeast	360.1	373.4
Southern	304.1	303.3
Western	118.5	136.2
<b>Total</b>	<b>1359.3</b>	<b>1424.5</b>

\*Includes Group Homes, Job Corps, Hospitals, Mental Health Institutes, Shelter Care, etc.

# June 2007 DYC Population Report

## IV. New Commitments

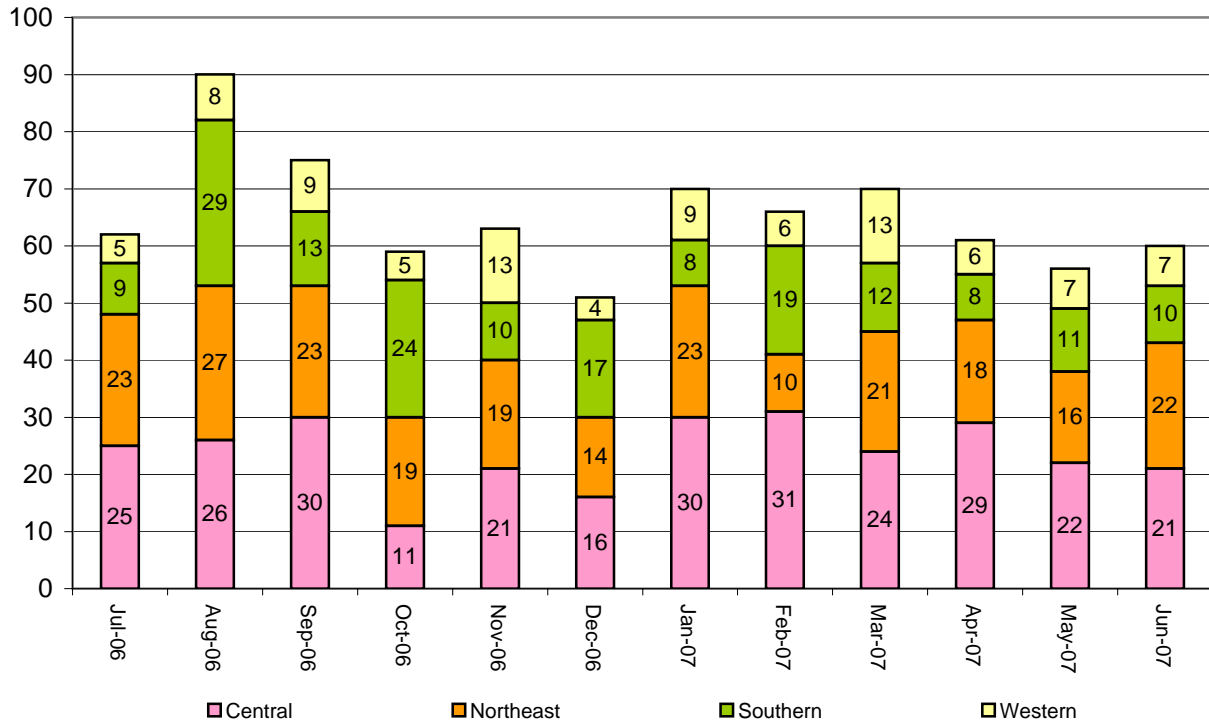
### New Commitments by Region

---

	<u>June 2007</u>	<u>YTD</u>	<u>June 2006</u>	<u>Last YTD</u>
Central Region	21	310	31	398
Northeast Region	22	243	18	259
Southern Region	10	177	15	172
Western Region	7	93	12	91
<b>New Commitment Total</b>	<b>60</b>	<b>823</b>	<b>76</b>	<b>920</b>

---

### Monthly New Commitments



# June 2007 DYC Population Report

## V. Parole Services

### Parole ADP by Region

	<u>June 2007</u>	<u>YTD</u>	<u>Last YTD</u>
Central Region	200.0	224.4	208.9
Northeast Region	125.2	143.3	128.6
Southern Region	81.3	91.9	100.0
Western Region	77.0	62.1	69.9
<b>Parole Total</b>	<b>483.5</b>	<b>521.7</b>	<b>507.4</b>

### Parole Intakes

### Parole Discharges

### Parole LOS

	<u>June 2007</u>		<u>YTD</u>		<u>YTD</u>
Central Region	36	410	38	400	6.5
Northeast Region	16	250	22	249	7.0
Southern Region	13	160	6	161	6.9
Western Region	14	119	9	101	7.3
Missing Region Data	0	0	0	0	
<b>Parole Total</b>	<b>79</b>	<b>939</b>	<b>75</b>	<b>911</b>	<b>6.8</b>

### Monthly Parole ADP

