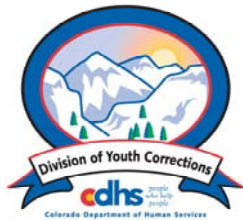


# MAY 2007 MONTHLY POPULATION REPORT

---

Prepared by the Division of Youth Corrections Research and Evaluation Unit June 21, 2007



**Colorado Department of Human Services**  
**Division of Youth Corrections**

---

Working with Colorado Communities to Achieve Justice

# May 2007

## DYC Population Report

<b>I.</b>	<b>Summary Population Data</b>	<b>1</b>
<b>II.</b>	<b>Detention ADP by Facility</b>	<b>2</b>
<b>III.</b>	<b>Commitment Services</b>	
	A. State and Contract Secure ADP by Facility	<b>3</b>
	B. Community/Other Residential ADP by Facility	<b>4</b>
<b>IV.</b>	<b>New Commitments</b>	<b>5</b>
<b>V.</b>	<b>Parole Services</b>	<b>6</b>

# May 2007 DYC Population Report

## I. Summary Population Data\*

DETAINED YOUTH	Average Daily Population (ADP)		Length of Stay (LOS)
	May 2007	YTD	YTD
State-Operated	397.8	390.1	14.0 days
Contracted Staff Secure	25.9	23.7	13.3 days
<b>Total Detained</b>	<b>423.7</b>	<b>413.8</b>	<b>14.0 days</b>

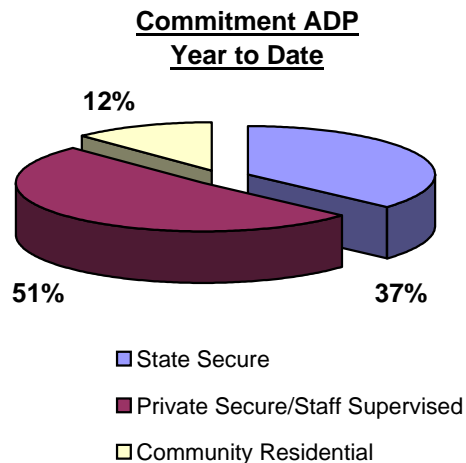
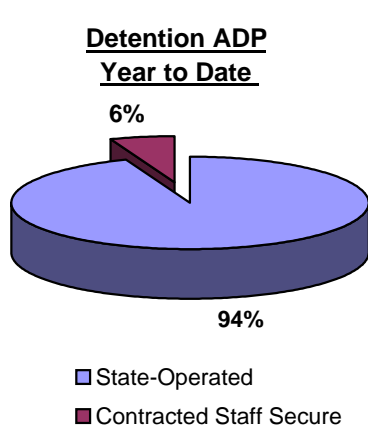
COMMITTED YOUTH	Average Daily Population (ADP)		Length of Stay (LOS)
	May 2007	YTD	YTD
State Secure	518.3	520.0	
Private Secure/Staff Supervised	694.5	721.2	
Community Residential	165.7	171.7	
Other Residential**	17.5	17.2	
<b>Total Committed Residential</b>	<b>1,396.0</b>	<b>1,430.0</b>	<b>19.0 months</b>
<i>Committed Residential w/o Boulder</i>	<i>1,388.5</i>	<i>1,423.0</i>	

PAROLED YOUTH	Average Daily Population (ADP)		Length of Stay (LOS)
	May 2007	YTD	YTD
<b>Total Paroled</b>	<b>481.4</b>	<b>524.9</b>	<b>6.8 months</b>

TOTAL STATEWIDE ADP	May 2007	YTD
	<b>2,301.1</b>	<b>2,368.8</b>



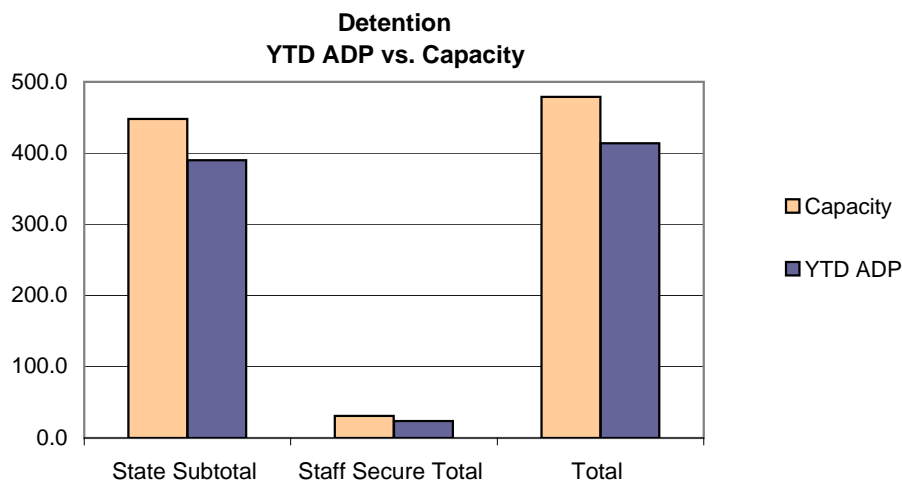
\*Due to rounding, totals shown may not be an exact sum of the subtotals

\*\*Includes Group Homes, Job Corps, Hospitals, Mental Health Institutes, Shelter Care, etc.

# May 2007 DYC Population Report

## II. Detention Program Services

Facility	Operating Capacity	Average Daily Population			New Admissions		YTD LOS in Days
		May 2007	YTD	YTD % of Capacity	May 2007	YTD	LOS
<i>State Operated Detention</i>							
Adams	29	26.9	25.9	89.3%	61	675	12.7
Gilliam	70	57.9	63.0	90.0%	132	1,312	16.0
Grand Mesa	24	20.5	21.0	87.4%	45	497	13.5
Marvin Foote	96	87.4	86.7	90.3%	176	1,671	17.2
Mount View	60	52.9	50.9	84.8%	98	1,018	16.0
Platte Valley	69	63.8	63.1	91.4%	179	1,697	12.1
Pueblo	42	36.5	32.1	76.5%	107	856	12.6
Spring Creek	58	51.9	47.5	81.8%	171	1,436	10.8
<i>State Subtotal</i>	<i>448</i>	<i>397.8</i>	<i>390.1</i>	<i>87.1%</i>	<i>969</i>	<i>9,162</i>	<i>14.0</i>
<i>Staff Secure Detention</i>							
Brown Center	2	1.7	1.5	76.0%	4	34	14.4
Griffith (Grand Ave)	2	1.8	1.5	72.5%	1	23	20.0
Hilltop	3	1.8	2.2	74.7%	3	36	21.1
Midway (Remington)	9	7.4	6.9	76.9%	24	233	10.8
Prowers	1	1.0	0.8	79.0%	1	9	29.3
Robert DeNier	9	8.2	7.5	83.2%	19	159	14.7
Youthtrack San Luis Valley	5	4.0	3.3	66.2%	9	100	11.3
<i>Staff Secure Total</i>	<i>31</i>	<i>25.9</i>	<i>23.7</i>	<i>76.5%</i>	<i>61</i>	<i>594</i>	<i>13.3</i>
<b>TOTAL</b>	<b>479</b>	<b>423.7</b>	<b>413.8</b>	<b>86.4%</b>	<b>1,030</b>	<b>9,756</b>	<b>14.0</b>



# May 2007 DYC Population Report

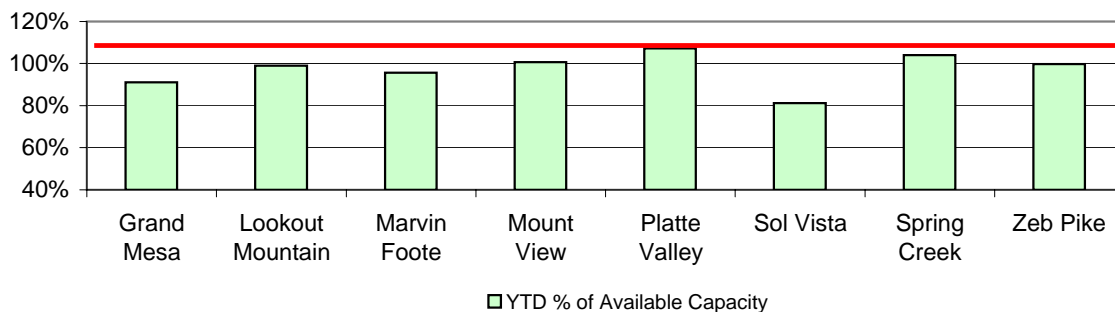
## III. Commitment Services

### A. State and Contract Secure ADP by Facility

<u>Facility</u>	<u>Operational Capacity</u>	<u>May 2007</u>	<u>YTD</u>	<u>YTD % of Capacity</u>	<u>YTD % of Available Capacity</u>
<b>State Secure</b>					
Adams	0	0.1	0.3	N/A	N/A
Gilliam	0	2.3	3.6	N/A	N/A
Grand Mesa	44	44.1	40.1	91.1%	91.1%
Lookout	214	214.0	211.8	99.0%	99.0%
Marvin Foote	22	19.7	21.0	95.6%	95.6%
Mount View	73	76.6	73.5	100.6%	100.6%
Platte Valley	66	66.0	70.8	107.2%	107.2%
Pueblo	0	0.0	1.4	N/A	N/A
Sol Vista*	13.3	19.9	10.8	81.2%	81.2%
Spring Creek	45	35.7	46.8	104.1%	104.1%
Zeb Pike	40	40.0	39.9	99.7%	99.7%
<i>State Subtotal</i>	<i>517.3</i>	<i>518.3</i>	<i>520.0</i>	<i>100.5%</i>	<i>100.5%</i>
<b>Contract Secure/Staff Supervised</b>					
Alternative Homes For Youth - Greeley		4.2	1.1		
Betty K. Marler Center		40.2	39.1		
Brown Center		1.6	2.4		
Cedar Springs		2.6	9.1		
Childrens Ark		9.0	4.1		
Devereux Cleo Wallace		23.7	23.4		
El Pueblo Ranch		7.5	5.1		
Excelsior Youth Center		1.0	1.1		
Glen Mills Schools		1.0	0.6		
Griffith Center (SR)		8.7	13.6		
Griffith Center, Grand Ave Girls (WR)		4.0	5.6		
Griffith Center, Boys (WR)		2.2	3.9		
Hilltop Youth Services		12.7	14.4		
Jefferson Hills		41.4	43.2		
Jefferson Hills Aurora		62.5	64.2		
Kidz Ark Sterling		5.2	5.0		
Mountain Star Center		4.0	4.7		
Ridge View		418.7	432.0		
Robert DeNier		17.2	16.5		
Southern Peaks		27.1	27.9		
Turning Point Center (MH)		0.0	4.3		
<i>Contract Secure Subtotal</i>		<i>694.5</i>	<i>721.2</i>		

\*Full Operating Capacity for Sol Vista is 20

**State Secure Commitment  
Percent of Available Capacity by Facility**



# May 2007

## DYC Population Report

### III. Commitment Services Continued

#### B. Community/Other Residential APD by Facility, ADP by Region

<u>Facility</u>	<u>May 2007</u>	<u>YTD</u>
<b>Community</b>		
Alternative Youth Adventures (AYA)	7.0	18.5
Boulder Community Treatment Center	1.0	0.7
Community Corrections & Work Release	0.0	1.7
Dale House Project	10.8	11.8
Daybreak & Daybreak Princeton	2.7	5.1
Denver Area Youth Services (DAYS)	13.5	10.7
Garfield County Community Corrections	0.0	0.2
Gateway Youth and Family Services	0.0	0.4
Griffith Centers (SR)	13.2	6.6
Griffith Centers (Chins Up)	0.0	0.1
Harmony Host Homes	0.0	0.2
Job Corps	2.0	3.5
Kidz Ark New Raymer Ranch	0.3	0.0
Lost and Found Inc., Arvada	7.5	4.1
Lost and Found Inc., Independent Living	0.0	0.6
Lost and Found Inc., Morrison	3.3	3.1
Maple Star Colorado	1.0	0.5
Marilee Center	4.5	2.8
Mt Evans Qualifying House	7.9	6.9
Reflections For Youth Inc., Prairie View	2.0	2.0
ROP - Canyon State Academy	1.0	0.7
Sobriety House/Stepping Stone	0.0	0.2
Southwest Colorado Community Corrections	0.0	0.2
Synergy Administration	5.5	6.0
Third Way Center	3.1	4.9
Third Way Center, Pontiac	5.3	5.8
Third Way Center, York	5.2	3.7
Third Way Center, Lincoln	1.6	4.3
Turning Point Center For Youth and Family Development	3.4	1.6
Turning Point Center (Boys Residential)	17.9	21.0
Turning Point, Mathews St.	3.6	6.2
Youthtrack, Jeffco	9.2	7.9
Youthtrack, San Luis Valley	3.0	2.3
Youthtrack, Work and Learn	11.6	11.5
Youth Ventures	18.8	15.9
<i>Community Subtotal</i>	<i>165.7</i>	<i>171.7</i>
<i>Private Contract Total</i>	<i>860.2</i>	<i>892.9</i>
<i>Other Residential*</i>	<i>17.5</i>	<i>17.2</i>
<b>RESIDENTIAL TOTAL</b>	<b>1,396.0</b>	<b>1,430.0</b>

<b>Region</b>	<b>May 2007</b>	<b>YTD</b>
Central	595.4	616.9
Northeast	365.7	372.5
Southern	308.8	303.1
Western	126.1	137.5
<b>Total</b>	<b>1396.0</b>	<b>1430.0</b>

*\*Includes Group Homes, Job Corps, Hospitals, Mental Health Institutes, Shelter Care, etc.*

# May 2007 DYC Population Report

## IV. New Commitments

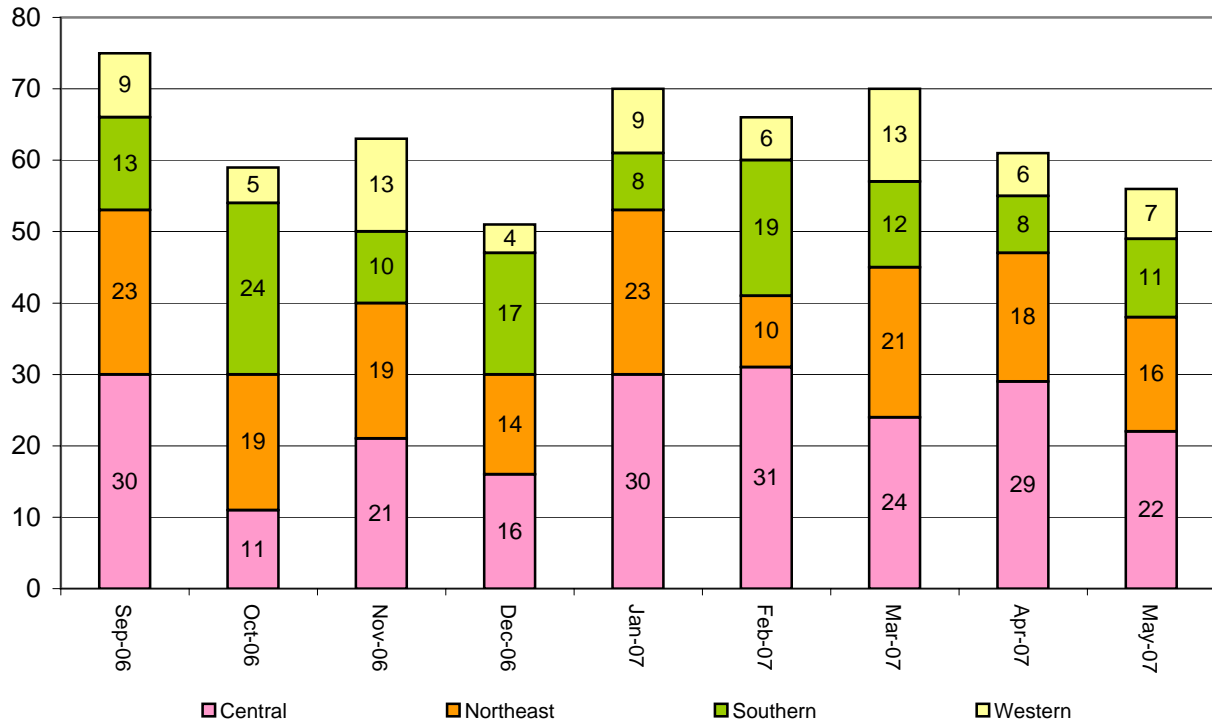
### New Commitments by Region

---

	<u>May 2007</u>	<u>YTD</u>	<u>May 2006</u>	<u>Last YTD</u>
Central Region	22	289	28	360
Northeast Region	16	220	24	235
Southern Region	11	167	18	157
Western Region	7	86	3	79
<b>New Commitment Total</b>	<b>56</b>	<b>762</b>	<b>73</b>	<b>831</b>

---

### Monthly New Commitments



# May 2007 DYC Population Report

## V. Parole Services

### Parole ADP by Region

	<u>May 2007</u>	<u>YTD</u>	<u>Last YTD</u>
Central Region	208.5	227.5	208.2
Northeast Region	128.6	143.6	128.7
Southern Region	77.1	93.3	100.2
Western Region	67.3	60.5	70.4
<b>Parole Total</b>	<b>481.4</b>	<b>524.9</b>	<b>507.6</b>

### Parole Intakes                      Parole Discharges                      Parole LOS

	<u>May 2007</u>	<u>YTD</u>	<u>May 2007</u>	<u>YTD</u>	<u>YTD</u>
Central Region	38	374	39	361	6.5
Northeast Region	25	232	18	224	6.9
Southern Region	9	147	17	154	6.9
Western Region	16	105	6	90	7.4
Missing Region Data	0	0	0	0	
<b>Parole Total</b>	<b>88</b>	<b>858</b>	<b>80</b>	<b>829</b>	<b>6.8</b>

### Monthly Parole ADP

