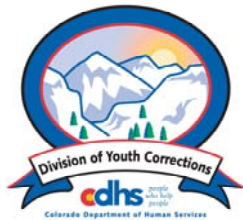


APRIL 2007 MONTHLY POPULATION REPORT

Prepared by the Division of Youth Corrections Research and Evaluation Unit May 22, 2007



Colorado Department of Human Services
Division of Youth Corrections

Working with Colorado Communities to Achieve Justice

April 2007

DYC Population Report

I.	Summary Population Data	1
II.	Detention ADP by Facility	2
III.	Commitment Services	
	A. State and Contract Secure ADP by Facility	3
	B. Community/Other Residential ADP by Facility	4
IV.	New Commitments	5
V.	Parole Services	6

April 2007 DYC Population Report

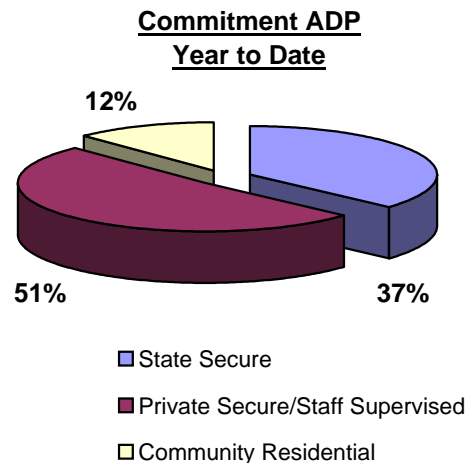
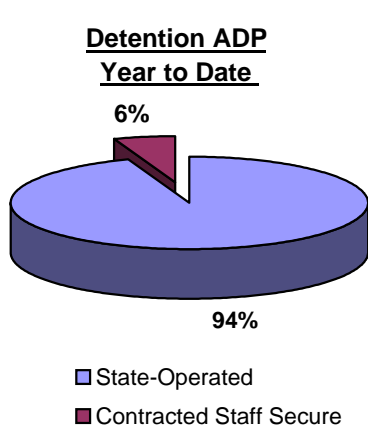
I. Summary Population Data*

DETAINED YOUTH	Average Daily Population (ADP)		Length of Stay (LOS)
	April 2007	YTD	YTD
State-Operated	380.0	388.8	14.1 days
Contracted Staff Secure	24.7	23.1	13.1 days
Total Detained	404.7	411.9	14.1 days

COMMITTED YOUTH	Average Daily Population (ADP)		Length of Stay (LOS)
	April 2007	YTD	YTD
State Secure	518.6	519.7	
Private Secure/Staff Supervised	696.9	724.4	
Community Residential	188.5	172.2	
Other Residential**	19.2	17.6	
Total Committed Residential	1,423.1	1,433.9	18.9 months
<i>Committed Residential w/o Boulder</i>	<i>1,415.6</i>	<i>1,427.0</i>	

PAROLED YOUTH	Average Daily Population (ADP)		Length of Stay (LOS)
	April 2007	YTD	YTD
Total Paroled	493.3	528.6	6.7 months

TOTAL STATEWIDE ADP	April 2007	YTD
	2,321.1	2,374.4



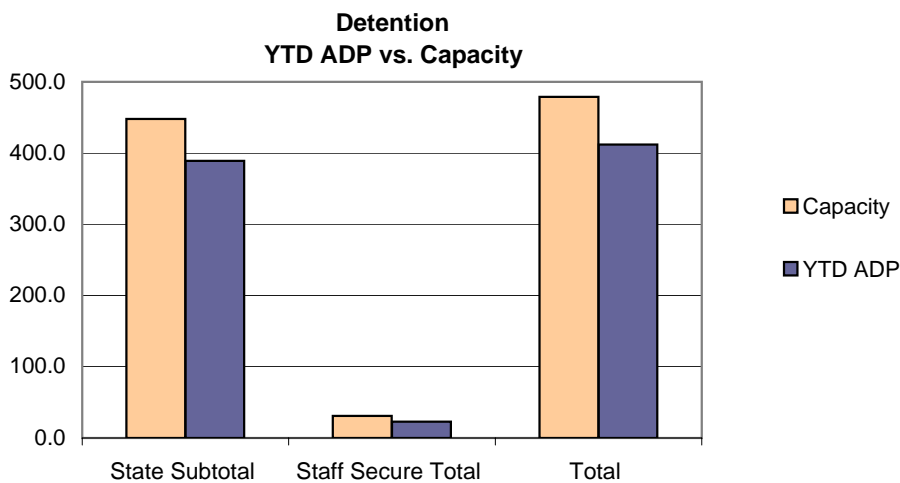
*Due to rounding, totals shown may not be an exact sum of the subtotals

**Includes Group Homes, Job Corps, Hospitals, Mental Health Institutes, Shelter Care, etc.

April 2007 DYC Population Report

II. Detention Program Services

Facility	Operating Capacity	Average Daily Population			New Admissions		YTD LOS in Days
		April 2007	YTD	YTD % of Capacity	April 2007	YTD	LOS
<i>State Operated Detention</i>							
Adams	29	24.7	25.9	89.4%	68	614	12.6
Gilliam	70	54.2	63.5	90.7%	113	1,180	16.1
Grand Mesa	24	20.7	20.9	87.1%	52	452	13.5
Marvin Foote	96	86.8	86.9	90.5%	140	1,495	17.6
Mount View	60	52.9	50.5	84.2%	79	920	16.0
Platte Valley	69	64.2	62.8	91.1%	146	1,518	12.1
Pueblo	42	33.2	31.6	75.1%	85	749	12.4
Spring Creek	58	43.3	46.7	80.6%	144	1,265	11.1
<i>State Subtotal</i>	<i>448</i>	<i>380.0</i>	<i>388.8</i>	<i>86.8%</i>	<i>827</i>	<i>8,193</i>	<i>14.1</i>
<i>Staff Secure Detention</i>							
Brown Center	2	1.4	1.5	73.5%	2	30	14.0
Griffith (Grand Ave)	2	1.7	1.4	70.0%	3	22	19.8
Hilltop	3	1.8	2.3	75.3%	2	33	21.5
Midway (Remington)	9	7.6	6.7	74.9%	31	209	10.9
Prowers	1	0.9	0.8	78.0%	1	8	29.3
Robert DeNier	9	8.1	7.2	80.4%	13	138	14.2
Youthtrack San Luis Valley	5	3.3	3.2	64.2%	12	90	10.1
<i>Staff Secure Total</i>	<i>31</i>	<i>24.7</i>	<i>23.1</i>	<i>74.5%</i>	<i>64</i>	<i>530</i>	<i>13.1</i>
TOTAL	479	404.7	411.9	86.0%	891	8,723	14.1



April 2007 DYC Population Report

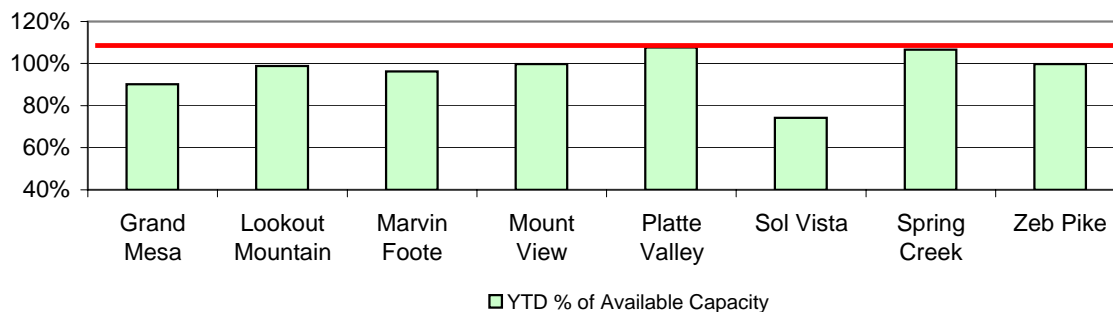
III. Commitment Services

A. State and Contract Secure ADP by Facility

<u>Facility</u>	<u>Operational Capacity</u>	<u>April 2007</u>	<u>YTD</u>	<u>YTD % of Capacity</u>	<u>YTD % of Available Capacity</u>
State Secure					
Adams	0	0.1	0.3	N/A	N/A
Gilliam	0	3.7	3.8	N/A	N/A
Grand Mesa	44	39.0	39.7	90.1%	90.1%
Lookout	214	214.3	211.6	98.9%	98.9%
Marvin Foote	22	19.6	21.2	96.2%	96.2%
Mount View	73	78.9	72.8	99.8%	99.8%
Platte Valley	66	66.7	71.1	107.7%	107.7%
Pueblo	0	0.2	1.5	N/A	N/A
Sol Vista*	13.3	19.8	9.9	74.2%	74.2%
Spring Creek	45	36.4	48.0	106.6%	106.6%
Zeb Pike	40	40.0	39.9	99.7%	99.7%
<i>State Subtotal</i>	<i>517.3</i>	<i>518.6</i>	<i>519.7</i>	<i>100.5%</i>	<i>100.5%</i>
Contract Secure/Staff Supervised					
Alternative Homes For Youth - Greeley		3.9	0.8		
Betty K. Marler Center		40.4	39.0		
Brown Center		2.0	2.5		
Cedar Springs		3.0	9.6		
Childrens Ark		7.8	3.6		
Devereux Cleo Wallace		25.6	23.4		
El Pueblo Ranch		7.0	4.8		
Excelsior Youth Center		1.0	1.1		
Glen Mills Schools		1.0	0.6		
Griffith Center (SR)		10.4	14.1		
Griffith Center, Grand Ave Girls (WR)		5.6	6.0		
Griffith Center, Boys (WR)		4.2	4.0		
Hilltop Youth Services		11.1	14.9		
Jefferson Hills		40.1	43.3		
Jefferson Hills Aurora		61.1	64.3		
Kidz Ark Sterling		6.0	5.0		
Mountain Star Center		4.8	4.8		
Ridge View		417.7	433.4		
Robert DeNier		16.1	16.5		
Southern Peaks		28.4	28.0		
Turning Point Center (MH)		0.0	4.7		
<i>Contract Secure Subtotal</i>		<i>696.9</i>	<i>724.4</i>		

*Full Operating Capacity for Sol Vista is 20

**State Secure Commitment
Percent of Available Capacity by Facility**



April 2007

DYC Population Report

III. Commitment Services Continued

B. Community/Other Residential APD by Facility, ADP by Region

<u>Facility</u>	<u>April 2007</u>	<u>YTD</u>
Community		
Alternative Youth Adventures (AYA)	26.3	19.8
Boulder Community Treatment Center	0.6	0.7
Community Corrections & Work Release	0.0	1.8
Dale House Project	10.3	11.9
Daybreak & Daybreak Princeton	2.9	5.3
Denver Area Youth Services (DAYS)	12.0	10.4
Garfield County Community Corrections	0.0	0.2
Gateway Youth and Family Services	1.0	0.5
Griffith Centers (SR)	11.4	6.0
Griffith Centers (Chins Up)	0.0	0.2
Harmony Host Homes	0.0	0.3
Job Corps	2.0	3.7
Lost and Found Inc., Arvada	7.3	3.8
Lost and Found Inc., Independent Living	0.0	0.7
Lost and Found Inc., Morrison	2.9	3.1
Maple Star Colorado	1.0	0.2
Marilee Center	5.1	2.6
Mt Evans Qualifying House	10.0	6.9
Reflections For Youth Inc., Prairie View	1.1	2.0
ROP - Canyon State Academy	1.0	0.6
Sobriety House/Stepping Stone	0.0	0.3
Southwest Colorado Community Corrections	0.0	0.2
Synergy Administration	7.2	6.0
Third Way Center	4.0	5.0
Third Way Center, Pontiac	6.1	5.8
Third Way Center, York	4.0	3.6
Third Way Center, Lincoln	2.6	4.6
Third Way Next Steps	0.0	0.0
Turning Point Center For Youth and Family Development	5.1	1.4
Turning Point Center (Boys Residential)	16.7	21.3
Turning Point, Mathews St.	4.2	6.5
Youthtrack, Jeffco	9.4	7.8
Youthtrack, San Luis Valley	2.9	2.3
Youthtrack, Work and Learn	11.6	11.4
Youth Ventures	19.8	15.6
<i>Community Subtotal</i>	<i>188.5</i>	<i>172.2</i>
<i>Private Contract Total</i>	<i>885.3</i>	<i>896.6</i>
<i>Other Residential*</i>	<i>19.2</i>	<i>17.6</i>
RESIDENTIAL TOTAL	1,423.1	1,433.9

Region	April 2007	YTD
Central	610.2	620.7
Northeast	367.2	372.1
Southern	312.4	301.7
Western	133.3	139.4
Total	1423.1	1433.9

**Includes Group Homes, Job Corps, Hospitals, Mental Health Institutes, Shelter Care, etc.*

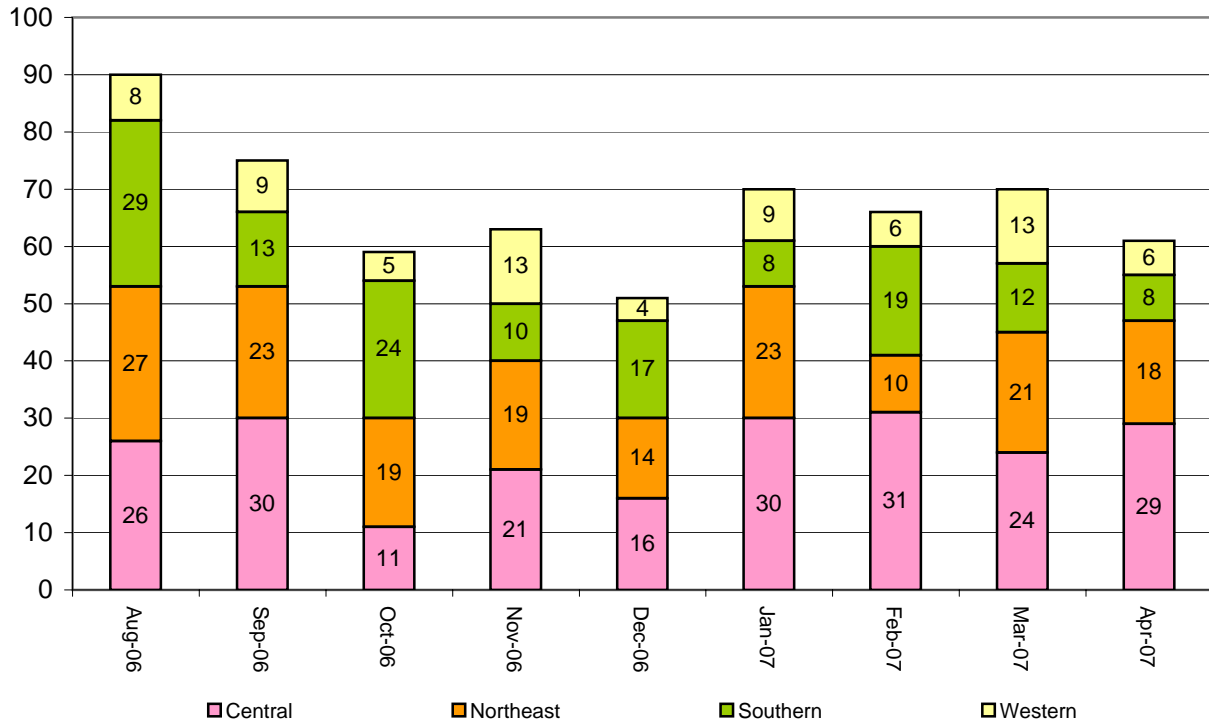
April 2007 DYC Population Report

IV. New Commitments

New Commitments by Region

	<u>April 2007</u>	<u>YTD</u>	<u>Apr 2006</u>	<u>Last YTD</u>
Central Region	29	266	39	328
Northeast Region	18	204	20	212
Southern Region	8	156	18	139
Western Region	6	79	10	76
New Commitment Total	61	705	87	755

Monthly New Commitments



April 2007 DYC Population Report

V. Parole Services

Parole ADP by Region

	<u>April 2007</u>	<u>YTD</u>	<u>Last YTD</u>
Central Region	218.3	229.9	208.0
Northeast Region	132.2	144.1	128.6
Southern Region	77.7	94.9	101.8
Western Region	65.0	59.8	71.0
Parole Total	493.3	528.6	509.4

Parole Intakes

Parole Discharges

Parole LOS

	<u>April 2007</u>		<u>YTD</u>		<u>YTD</u>
Central Region	27	337	36	322	6.5
Northeast Region	16	205	21	206	6.9
Southern Region	16	137	12	137	6.5
Western Region	10	90	5	84	7.4
Missing Region Data	0	0	0	0	
Parole Total	69	769	74	749	6.7

Monthly Parole ADP

