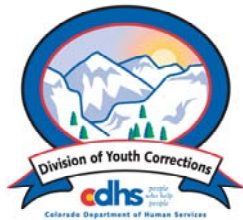


# MARCH 2007 MONTHLY POPULATION REPORT

---

Prepared by the Division of Youth Corrections Research and Evaluation Unit April 18, 2007



**Colorado Department of Human Services**  
**Division of Youth Corrections**

---

Working with Colorado Communities to Achieve Justice

# March 2007

## DYC Population Report

<b>I.</b>	<b>Summary Population Data</b>	<b>1</b>
<b>II.</b>	<b>Detention ADP by Facility</b>	<b>2</b>
<b>III.</b>	<b>Commitment Services</b>	
	A. State and Contract Secure ADP by Facility	<b>3</b>
	B. Community/Other Residential ADP by Facility	<b>4</b>
<b>IV.</b>	<b>New Commitments</b>	<b>5</b>
<b>V.</b>	<b>Parole Services</b>	<b>6</b>

# March 2007 DYC Population Report

## I. Summary Population Data\*

DETAINED YOUTH	Average Daily Population (ADP)		Length of Stay (LOS)
	March 2007	YTD	YTD
State-Operated	393.0	388.1	14.1 days
Contracted Staff Secure	23.7	22.9	12.8 days
<b>Total Detained</b>	<b>416.7</b>	<b>410.9</b>	<b>14.0 days</b>

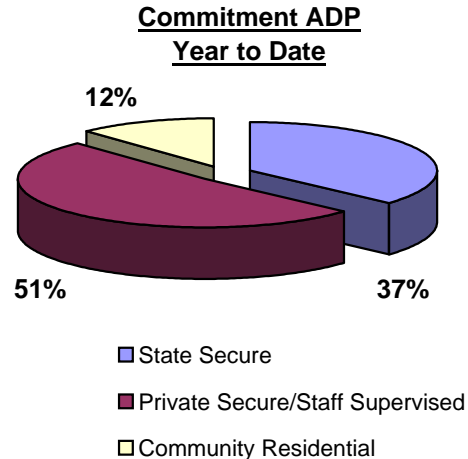
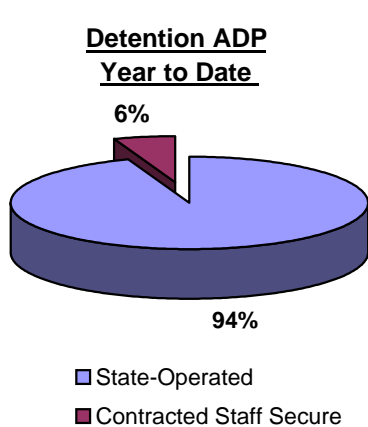
COMMITTED YOUTH	Average Daily Population (ADP)		Length of Stay (LOS)
	March 2007	YTD	YTD
State Secure	519.3	519.9	
Private Secure/Staff Supervised	700.8	727.7	
Community Residential	179.0	170.8	
Other Residential**	19.0	17.1	
<b>Total Committed Residential</b>	<b>1,418.0</b>	<b>1,435.5</b>	<b>18.7 months</b>
<i>Committed Residential w/o Boulder</i>	<i>1,408.6</i>	<i>1,428.6</i>	

PAROLED YOUTH	Average Daily Population (ADP)		Length of Stay (LOS)
	March 2007	YTD	YTD
<b>Total Paroled</b>	<b>506.5</b>	<b>533.0</b>	<b>6.8 months</b>

TOTAL STATEWIDE ADP	March 2007	YTD
	<b>2,341.2</b>	<b>2,379.4</b>



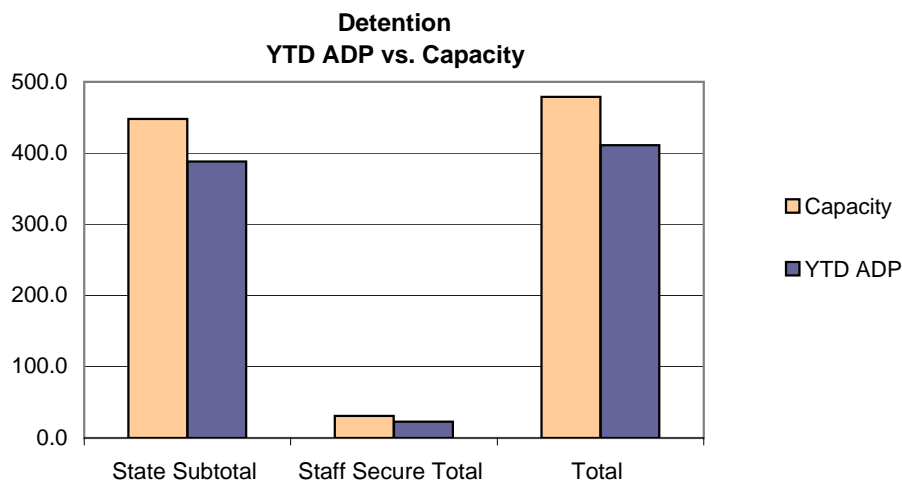
\*Due to rounding, totals shown may not be an exact sum of the subtotals

\*\*Includes Group Homes, Job Corps, Hospitals, Mental Health Institutes, Shelter Care, etc.

# March 2007 DYC Population Report

## II. Detention Program ADP by Facility

Facility	Operating Capacity	Average Daily Population		YTD % of Capacity	New Admissions		YTD LOS in Days
		March 2007	YTD		March 2007	YTD	
<i>State Operated Detention</i>							
Adams	29	25.0	25.9	89.4%	63	546	13.0
Gilliam	70	61.8	64.2	91.7%	124	1,067	16.0
Grand Mesa	24	18.2	20.9	87.0%	43	400	13.7
Marvin Foote	96	89.7	86.5	90.1%	153	1,354	17.2
Mount View	60	50.4	50.1	83.4%	109	841	16.0
Platte Valley	69	66.4	62.5	90.5%	165	1,372	11.9
Pueblo	42	36.7	31.2	74.4%	112	664	12.8
Spring Creek	58	44.9	46.8	80.7%	121	1,120	11.2
<i>State Subtotal</i>	<i>448</i>	<i>393.0</i>	<i>388.1</i>	<i>86.6%</i>	<i>890</i>	<i>7,364</i>	<i>14.1</i>
<i>Staff Secure Detention</i>							
Brown Center	2	1.4	1.5	77.0%	3	28	14.0
Griffith (Grand Ave)	2	1.2	1.4	68.0%	3	19	12.0
Hilltop	3	1.8	2.3	76.3%	6	31	22.3
Midway (Remington)	9	8.0	6.6	73.7%	25	178	11.5
Prowers	1	1.0	0.8	76.0%	0	7	21.0
Robert DeNier	9	7.3	7.1	79.2%	15	127	13.5
Youthtrack San Luis Valley	5	3.1	3.1	62.8%	10	79	10.4
<i>Staff Secure Total</i>	<i>31</i>	<i>23.7</i>	<i>22.9</i>	<i>73.7%</i>	<i>62</i>	<i>469</i>	<i>12.8</i>
<b>TOTAL</b>	<b>479</b>	<b>416.7</b>	<b>410.9</b>	<b>85.8%</b>	<b>952</b>	<b>7,833</b>	<b>14.0</b>



# March 2007 DYC Population Report

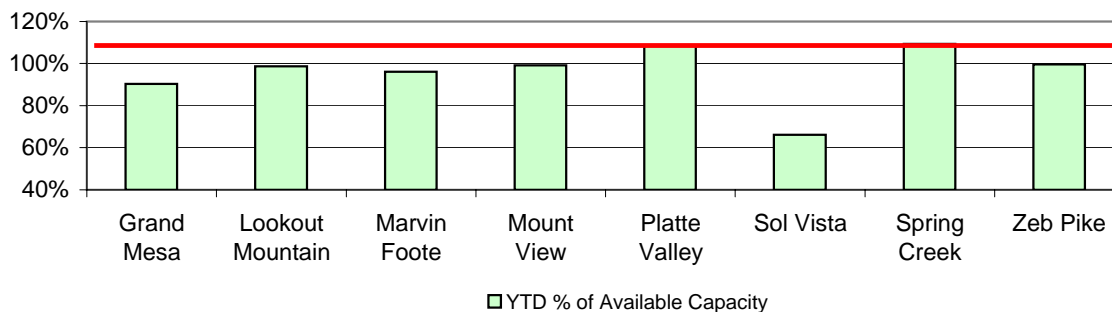
## III. Commitment Services

### A. State and Contract Secure ADP by Facility

<u>Facility</u>	<u>Operational Capacity</u>	<u>March 2007</u>	<u>YTD</u>	<u>YTD % of Capacity</u>	<u>YTD % of Available Capacity</u>
<b>State Secure</b>					
Adams	0	0.1	0.4	N/A	N/A
Gilliam	0	5.1	3.9	N/A	N/A
Grand Mesa	44	37.9	39.7	90.3%	90.3%
Lookout	214	213.4	211.3	98.7%	98.7%
Marvin Foote	22	18.6	21.1	96.1%	96.1%
Mount View	73	75.3	72.4	99.2%	99.2%
Platte Valley	66	60.2	71.6	108.4%	108.4%
Pueblo	0	1.5	1.6	N/A	N/A
Sol Vista*	13.3	19.3	8.8	66.1%	66.1%
Spring Creek	45	48.4	49.2	109.4%	109.4%
Zeb Pike	40	39.4	39.9	99.7%	99.7%
<i>State Subtotal</i>	<i>517.3</i>	<i>519.3</i>	<i>519.9</i>	<i>100.5%</i>	<i>100.5%</i>
<b>Contract Secure/Staff Supervised</b>					
Alternative Homes For Youth - Greeley		3.0	0.4		
Betty K. Marler Center		39.4	38.8		
Brown Center		3.5	2.6		
Cedar Springs		4.3	10.5		
Childrens Ark		7.3	3.1		
Devereux Cleo Wallace		28.2	23.2		
El Pueblo Ranch		6.3	4.6		
Excelsior Youth Center		1.0	1.1		
Glen Mills Schools		1.0	0.5		
Griffith Center (SR)		13.1	14.5		
Griffith Center, Grand Ave Girls (WR)		6.9	6.1		
Griffith Center, Boys (WR)		5.5	4.0		
Hilltop Youth Services		13.5	15.4		
Jefferson Hills		41.1	43.8		
Jefferson Hills Aurora		62.2	64.6		
Kidz Ark Sterling		7.6	4.9		
Mountain Star Center		4.7	4.8		
Ridge View		408.9	435.1		
Robert DeNier		15.0	16.5		
Southern Peaks		28.6	28.0		
Turning Point Center (MH)		0.0	5.3		
<i>Contract Secure Subtotal</i>		<i>700.8</i>	<i>727.7</i>		

\*Full Operating Capacity for Sol Vista is 20

**State Secure Commitment  
Percent of Available Capacity by Facility**



# March 2007

## DYC Population Report

### III. Commitment Services Continued

#### B. Community/Other Residential APD by Facility, ADP by Region

<u>Facility</u>	<u>March 2007</u>	<u>YTD</u>
<b>Community</b>		
Alternative Youth Adventures (AYA)	20.6	19.0
Boulder Community Treatment Center	0.3	0.7
Community Corrections & Work Release	0.0	2.0
Dale House Project	11.8	12.0
Daybreak & Daybreak Princeton	3.4	5.6
Denver Area Youth Services (DAYS)	11.5	10.2
Garfield County Community Corrections	0.0	0.2
Gateway Youth and Family Services	0.0	0.5
Griffith Centers (SR)	6.9	5.4
Griffith Centers (Chins Up)	0.0	0.2
Harmony Host Homes	0.0	0.3
Job Corps	2.6	3.9
Lost and Found Inc., Arvada	6.9	3.4
Lost and Found Inc., Independent Living	0.0	0.7
Lost and Found Inc., Morrison	2.3	3.1
Maple Star Colorado	1.8	0.3
Marilee Center	4.5	2.4
Mt Evans Qualifying House	11.9	6.5
Reflections For Youth Inc., Prairie View	1.0	2.1
ROP - Canyon State Academy	1.0	0.6
Sobriety House/Stepping Stone	0.0	0.3
Southwest Colorado Community Corrections	0.0	0.2
Synergy Administration	7.5	5.9
Third Way Center	3.8	5.2
Third Way Center, Pontiac	6.1	5.8
Third Way Center, York	3.0	3.5
Third Way Center, Lincoln	3.5	4.8
Third Way Next Steps	0.2	0.2
Turning Point Center For Youth and Family Development	5.9	1.0
Turning Point Center (Boys Residential)	17.3	21.8
Turning Point, Mathews St.	4.8	6.8
Youthtrack, Jeffco	8.1	7.6
Youthtrack, San Luis Valley	2.0	2.2
Youthtrack, Work and Learn	11.9	11.4
Youth Ventures	18.5	15.1
<i>Community Subtotal</i>	<i>179.0</i>	<i>170.8</i>
<i>Private Contract Total</i>	<i>879.8</i>	<i>898.5</i>
<i>Other Residential*</i>	<i>19.0</i>	<i>17.1</i>
<b>RESIDENTIAL TOTAL</b>	<b>1,418.0</b>	<b>1,435.5</b>

<u>Region</u>	<u>March 2007</u>	<u>YTD</u>
Central	605.7	624.8
Northeast	366.8	371.3
Southern	312.6	300.5
Western	132.9	138.9
<b>Total</b>	<b>1418.0</b>	<b>1435.5</b>

\*Includes Group Homes, Job Corps, Hospitals, Mental Health Institutes, Shelter Care, etc.

# March 2007 DYC Population Report

## IV. New Commitments

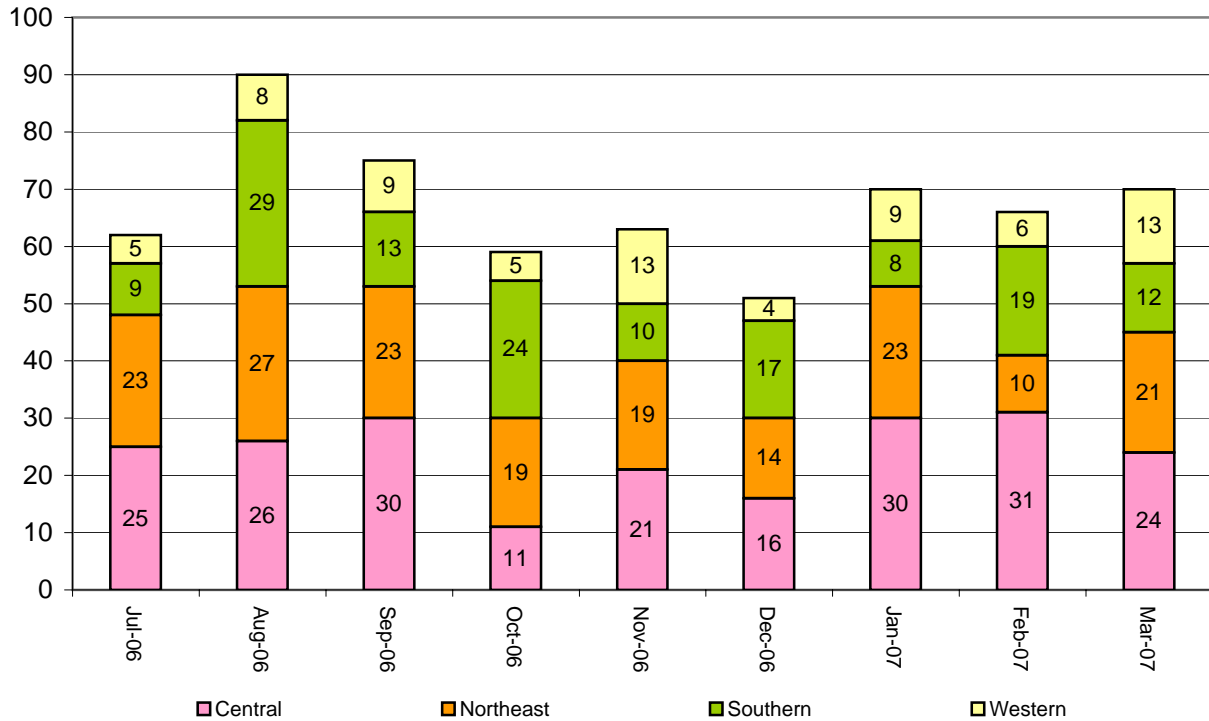
### New Commitments by Region

---

	<u>March 2007</u>	<u>YTD</u>	<u>Mar 2006</u>	<u>Last YTD</u>
Central Region	24	235	23	285
Northeast Region	21	186	16	193
Southern Region	12	147	9	120
Western Region	13	72	11	66
<b>New Commitment Total</b>	<b>70</b>	<b>640</b>	<b>59</b>	<b>664</b>

---

### Monthly New Commitments



# March 2007 DYC Population Report

## V. Parole Services

### Parole ADP by Region

	<u>March 2007</u>	<u>YTD</u>	<u>Last YTD</u>
Central Region	221.9	231.1	209.6
Northeast Region	140.0	146.0	128.9
Southern Region	84.0	97.2	100.3
Western Region	60.6	58.6	71.7
<b>Parole Total</b>	<b>506.5</b>	<b>533.0</b>	<b>510.4</b>

### Parole Intakes                      Parole Discharges                      Parole LOS

	<u>March 2007</u>		<u>YTD</u>		<u>YTD</u>
Central Region	32	311	27	286	6.5
Northeast Region	16	187	28	184	6.8
Southern Region	11	121	11	122	6.9
Western Region	13	80	7	78	7.8
Missing Region Data	0	0	0	0	
<b>Parole Total</b>	<b>72</b>	<b>699</b>	<b>73</b>	<b>670</b>	<b>6.8</b>

### Monthly Parole ADP

