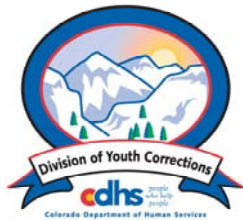


# JANUARY 2007 MONTHLY POPULATION REPORT

---

Prepared by the Division of Youth Corrections Research and Evaluation Unit February 26, 2007



**Colorado Department of Human Services**  
**Division of Youth Corrections**

---

Working with Colorado Communities to Achieve Justice

# January 2007

## DYC Population Report

<b>I.</b>	<b>Summary Population Data</b>	<b>1</b>
<b>II.</b>	<b>Detention ADP by Facility</b>	<b>2</b>
<b>III.</b>	<b>Commitment Services</b>	
	A. State and Contract Secure ADP by Facility	<b>3</b>
	B. Community/Other Residential ADP by Facility	<b>4</b>
<b>IV.</b>	<b>New Commitments</b>	<b>5</b>
<b>V.</b>	<b>Parole Services</b>	<b>6</b>

# January 2007 DYC Population Report

## I. Summary Population Data\*

DETAINED YOUTH	Average Daily Population (ADP)		Length of Stay (LOS)
	January 2007	YTD	YTD
State-Operated	364.8	388.5	14.4 days
Contracted Staff Secure	19.5	22.6	13.6 days
<b>Total Detained</b>	<b>384.2</b>	<b>411.1</b>	<b>14.4 days</b>

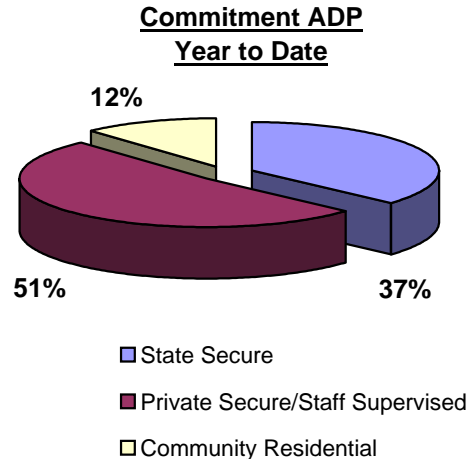
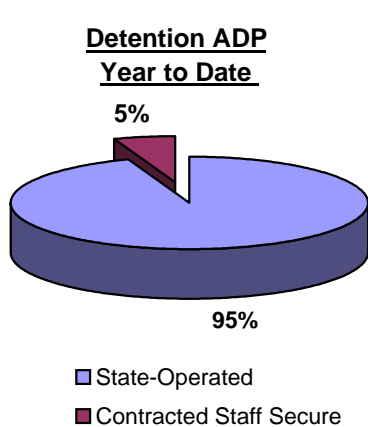
COMMITTED YOUTH	Average Daily Population (ADP)		Length of Stay (LOS)
	January 2007	YTD	YTD
State Secure	496.5	519.9	
Private Secure/Staff Supervised	725.7	734.1	
Community Residential	158.8	165.2	
Other Residential**	21.2	21.4	
<b>Total Committed Residential</b>	<b>1,402.2</b>	<b>1,440.5</b>	<b>18.9 months</b>
<i>Committed Residential w/o Boulder</i>	<i>1,395.5</i>	<i>1,434.1</i>	

PAROLED YOUTH	Average Daily Population (ADP)		Length of Stay (LOS)
	January 2007	YTD	YTD
<b>Total Paroled</b>	<b>547.6</b>	<b>539.2</b>	<b>6.8 months</b>

TOTAL STATEWIDE ADP	2,334.1	2,390.8
---------------------	---------	---------



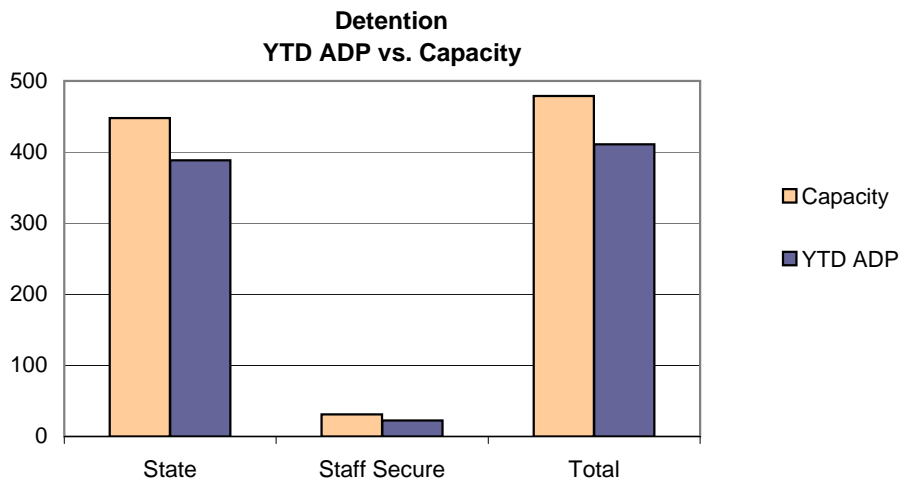
\*Due to rounding, totals shown may not be an exact sum of the subtotals

\*\*Includes Group Homes, Job Corps, Hospitals, Mental Health Institutes, Shelter Care, etc.

# January 2007 DYC Population Report

## II. Detention Program Services

Facility	Average Daily Population			New Admissions		YTD LOS in Days	
	Operating Capacity	January 2007	YTD	YTD % of Capacity	January 2007	YTD	LOS
<i>State Operated Detention</i>							
Adams	29	25.3	26.2	90.5%	59	424	12.9
Gilliam	70	59.0	64.9	92.7%	121	834	16.4
Grand Mesa	24	20.2	21.2	88.4%	44	321	13.6
Marvin Foote	96	85.1	86.1	89.7%	138	1,046	17.7
Mount View	60	49.8	49.6	82.6%	108	623	16.8
Platte Valley	69	57.7	61.4	89.0%	135	1,063	12.0
Pueblo	42	26.2	30.5	72.7%	61	477	13.5
Spring Creek	58	41.6	48.5	83.7%	119	885	11.4
<i>State Subtotal</i>	<i>448</i>	<i>364.8</i>	<i>388.5</i>	<i>86.7%</i>	<i>785</i>	<i>5,673</i>	<i>14.4</i>
<i>Staff Secure Detention</i>							
Brown Center	2	1.6	1.5	77.0%	2	23	12.9
Griffith (Grand Ave)	2	1.2	1.4	69.5%	1	14	15.3
Hilltop	3	2.9	2.4	79.3%	2	20	25.6
Midway (Remington)	9	5.2	6.4	70.6%	19	131	12.2
Prowers	1	0.9	0.7	69.0%	1	7	21.0
Robert DeNier	9	5.1	7.1	78.8%	17	96	13.9
Youthtrack San Luis Valley	5	2.5	3.1	62.6%	6	62	11.6
<i>Staff Secure Total</i>	<i>31</i>	<i>19.5</i>	<i>22.6</i>	<i>72.8%</i>	<i>48</i>	<i>353</i>	<i>13.6</i>
<b>TOTAL</b>	<b>479</b>	<b>384.2</b>	<b>411.1</b>	<b>85.8%</b>	<b>833</b>	<b>6,026</b>	<b>14.4</b>



# January 2007 DYC Population Report

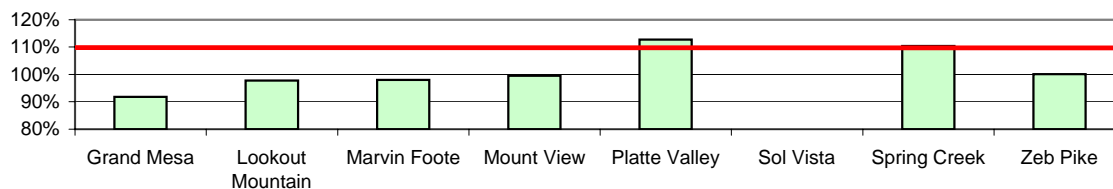
## III. Commitment Services

### A. State and Contract Secure ADP by Facility

Facility	Operational Capacity	January 2007	YTD	YTD % of Capacity	YTD % of Available Capacity
<b>State Secure</b>					
Adams	0	0.2	0.5	N/A	N/A
Gilliam	0	2.4	3.8	N/A	N/A
Grand Mesa	44	36.3	40.4	91.9%	91.9%
Lookout	214	212.9	209.2	97.7%	97.7%
Marvin Foote	22	17.8	21.6	98.0%	98.0%
Mount View	73	59.8	72.7	99.6%	99.6%
Platte Valley	66	60.0	74.4	112.7%	112.7%
Pueblo	0	1.9	1.7	N/A	N/A
Sol Vista*	13.3	18.7	6.0	44.7%	44.7%
Spring Creek	45	46.8	49.7	110.5%	110.5%
Zeb Pike	40	39.8	40.0	100.1%	100.1%
<i>State Subtotal</i>	<i>517.3</i>	<i>496.5</i>	<i>519.9</i>	<i>100.5%</i>	<i>100.5%</i>
<b>Contract Secure/Staff Supervised</b>					
Betty K. Marler Center		38.3	37.4	0.0	
Brown Center		2.0	1.9	0.0	
Cedar Springs		6.3	12.1	0.0	
Childrens Ark		4.4	2.1	0.0	
Devereux Cleo Wallace		23.7	21.9	0.0	
El Pueblo Ranch		2.0	4.4	0.0	
Excelsior Youth Center		1.0	1.1	0.0	
Glen Mills Schools		1.0	0.4	0.0	
Griffith Center (SR)		15.5	14.6	0.0	
Griffith Center, Grand Ave Girls (WR)		6.8	5.7	0.0	
Griffith Center, Boys (WR)		6.6	6.6	0.0	
Hilltop Youth Services (RCCF)		10.0	10.4	0.0	
Hilltop Youth Services (TRCCF)		5.1	5.5	0.0	
Jefferson Hills		44.3	44.4	0.0	
Jefferson Hills Aurora		63.4	65.2	0.0	
Kidz Ark Sterling		8.0	4.1	0.0	
Mountain Star Center		5.2	4.9	0.0	
Ridge View		425.4	440.7	0.0	
Robert DeNier		17.5	16.9	0.0	
Southern Peaks		33.3	27.4	0.0	
Turning Point Center (MH)		6.0	6.6	0.0	
<i>Contract Secure Subtotal</i>		<i>725.7</i>	<i>734.1</i>		

\*Full Operating Capacity for Sol Vista is 20

**State Secure Commitment  
Percent of Available Capacity by Facility**



□ YTD % of Available Capacity

# January 2007 DYC Population Report

## III. Commitment Services Continued

### B. Community/Other Residential APD by Facility, ADP by Region

<u>Facility</u>	<u>January 2007</u>	<u>YTD</u>
<b>Community</b>		
Alternative Youth Adventures (AYA)	15.8	18.8
Boulder Community Treatment Center	1.0	0.7
Community Corrections & Work Release	2.0	2.5
Dale House Project	12.1	12.4
Daybreak & Daybreak Princeton	5.0	6.0
Denver Area Youth Services (DAYS)	8.2	9.6
Garfield County Community Corrections	0.0	0.3
Gateway Youth and Family Services	0.0	0.2
Griffith Centers (SR)	4.9	5.3
Griffith Centers (Chins Up)	0.0	0.2
Harmony Host Homes	0.0	0.4
Lost and Found Inc., Arvada	6.3	2.6
Lost and Found Inc., Independent Living	0.0	0.9
Lost and Found Inc., Morrison	2.4	3.2
Maple Star Colorado	0.3	0.0
Marilee Center	4.1	1.9
Mt Evans Qualifying House	8.6	5.2
Reflections For Youth Inc., Prairie View	2.1	2.4
ROP - Canyon State Academy	1.0	0.5
Sobriety House/Stepping Stone	0.0	0.4
Southwest Colorado Community Corrections	1.0	0.3
Synergy Administration	4.4	5.8
Third Way Center	5.0	5.4
Third Way Center, Pontiac	2.2	5.5
Third Way Center, York	2.1	3.8
Third Way Center, Lincoln	5.3	5.1
Turning Point Center (Boys Residential)	19.1	23.2
Turning Point, Mathews St.	5.9	7.4
Youthtrack, Jeffco	7.0	7.7
Youthtrack, San Luis Valley	2.0	2.2
Youthtrack, Work and Learn	11.9	11.3
Youth Ventures	19.2	14.0
<i>Community Subtotal</i>	<i>158.8</i>	<i>165.2</i>
<i>Private Contract Total</i>	<i>884.6</i>	<i>899.3</i>
<i>Other Residential*</i>	<i>21.2</i>	<i>21.4</i>
<b>RESIDENTIAL TOTAL</b>	<b>1,402.2</b>	<b>1,440.5</b>

<u>Region</u>	<u>January 2007</u>	<u>YTD</u>
Central	593.7	631.0
Northeast	364.9	373.1
Southern	311.1	296.6
Western	132.4	139.8
<b>Total</b>	<b>1,402.2</b>	<b>1,440.5</b>

\*Includes Group Homes, Job Corps, Hospitals, Mental Health Institutes, Shelter Care, etc.

# January 2007 DYC Population Report

## IV. New Commitments

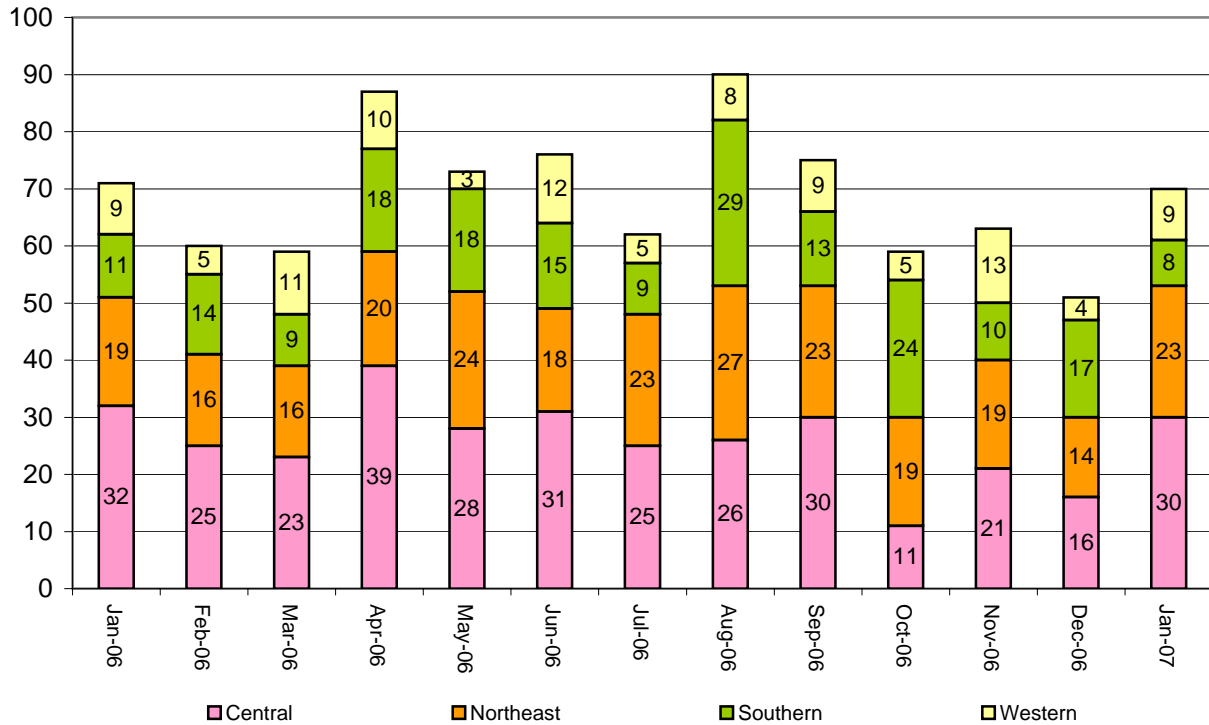
### New Commitments by Region

---

	<u>January 2007</u>	<u>YTD</u>	<u>Jan 2006</u>	<u>Last YTD</u>
Central Region	30	178	32	232
Northeast Region	23	153	19	154
Southern Region	8	116	11	95
Western Region	9	53	9	50
<b>New Commitment Total</b>	<b>70</b>	<b>500</b>	<b>71</b>	<b>531</b>

---

### Monthly New Commitments



# January 2007 DYC Population Report

## V. Parole Services

### Parole ADP by Region

	<u>January 2007</u>	<u>YTD</u>	<u>Last YTD</u>
Central Region	234.1	234.1	209.7
Northeast Region	154.2	147.8	127.5
Southern Region	96.5	97.4	100.2
Western Region	62.8	59.9	73.4
<b>Parole Total</b>	<b>547.6</b>	<b>539.2</b>	<b>510.7</b>

### Parole Intakes

### Parole Discharges

### Parole LOS

	<u>January 2007</u>		<u>YTD</u>		<u>YTD</u>	
Central Region	33	255	31	223	6.6	6.8
Northeast Region	18	156	18	131	7.0	7.4
Southern Region	13	98	7	59	0	0
Western Region	7	57	0	0	0	0
Missing Region Data	0	0	0	0	0	0
<b>Parole Total</b>	<b>71</b>	<b>566</b>	<b>69</b>	<b>500</b>	<b>6.8</b>	<b>6.8</b>

### Monthly Parole ADP

