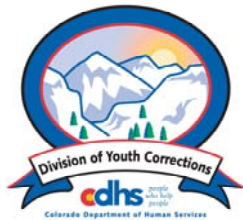


DECEMBER 2006 MONTHLY POPULATION REPORT

Prepared by the Division of Youth Corrections Research and Evaluation Unit January 17, 2007



Colorado Department of Human Services
Division of Youth Corrections

Working with Colorado Communities to Achieve Justice

December 2006

DYC Population Report

I.	Summary Population Data	1
II.	Detention ADP by Facility	2
III.	Commitment Services	
	A. State and Contract Secure ADP by Facility	3
	B. Community/Other Residential ADP by Facility	4
IV.	New Commitments	5
V.	Parole Services	6

December 2006 DYC Population Report

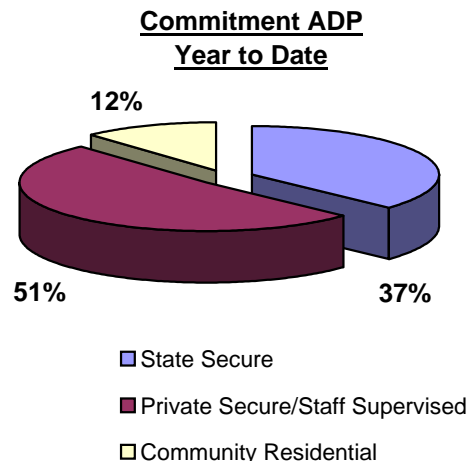
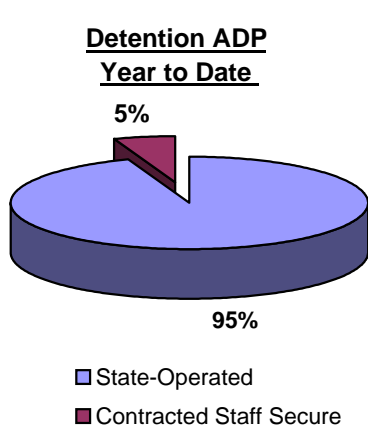
I. Summary Population Data*

DETAINED YOUTH	Average Daily Population (ADP)		Length of Stay (LOS)
	December 2006	YTD	YTD
State-Operated	379.4	393.4	14.1 days
Contracted Staff Secure	19.7	22.7	13.6 days
Total Detained	399.1	416.1	14.0 days

COMMITTED YOUTH	Average Daily Population (ADP)		Length of Stay (LOS)
	December 2006	YTD	YTD
State Secure	499.0	524.4	
Private Secure/Staff Supervised	725.1	729.5	
Community Residential	158.5	164.9	
Other Residential**	18.5	20.4	
Total Committed Residential	1,401.2	1,439.1	18.9 months
<i>Committed Residential w/o Boulder</i>	<i>1,394.7</i>	<i>1,432.7</i>	

PAROLED YOUTH	Average Daily Population (ADP)		Length of Stay (LOS)
	December 2006	YTD	YTD
Total Paroled	558.3	534.5	6.8 months

TOTAL STATEWIDE ADP	2,358.5	2,389.7	
----------------------------	----------------	----------------	--



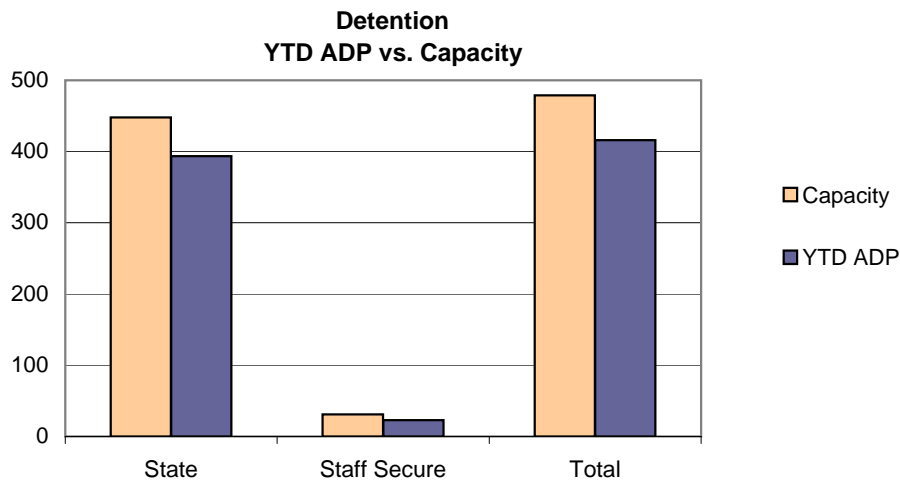
*Due to rounding, totals shown may not be an exact sum of the subtotals

**Includes Group Homes, Job Corps, Hospitals, Mental Health Institutes, Shelter Care, etc.

December 2006 DYC Population Report

II. Detention Program Services Continued

Facility	Average Daily Population			New Admissions		YTD LOS in Days	
	Operating Capacity	December 2006	YTD	YTD % of Capacity	December 2006	YTD	LOS
<i>State Operated Detention</i>							
Adams	29	24.2	26.5	91.3%	43	365	12.6
Gilliam	70	64.4	66.0	94.3%	103	713	16.1
Grand Mesa	24	19.7	21.5	89.6%	48	277	13.7
Marvin Foote	96	91.3	86.8	90.4%	126	908	17.3
Mount View	60	49.9	49.4	82.3%	65	515	16.3
Platte Valley	69	60.2	62.1	90.1%	118	928	11.5
Pueblo	38	25.3	31.2	82.2%	50	416	13.5
Spring Creek	62	44.4	49.9	80.4%	113	767	11.1
<i>State Subtotal</i>	<i>448</i>	<i>379.4</i>	<i>393.4</i>	<i>87.8%</i>	<i>666</i>	<i>4,889</i>	<i>14.1</i>
<i>Staff Secure Detention</i>							
Brown Center	2	0.7	1.5	74.0%	1	21	12.9
Griffith Center	2	1.1	1.4	70.5%	1	13	17.2
Hilltop Youth Services	3	2.9	2.4	78.7%	1	18	21.0
Midway Remington	9	6.1	6.6	73.3%	17	112	12.7
Prowers	1	0.2	0.7	66.0%	2	6	23.4
Robert DeNier	9	7.0	6.9	77.0%	13	77	14.3
Youthtrack San Luis Valley	5	1.7	3.3	65.4%	7	56	11.1
<i>Staff Secure Total</i>	<i>31</i>	<i>19.7</i>	<i>22.7</i>	<i>73.3%</i>	<i>42</i>	<i>303</i>	<i>13.6</i>
TOTAL	479	399.1	416.1	86.9%	708	5,192	14.0



December 2006 DYC Population Report

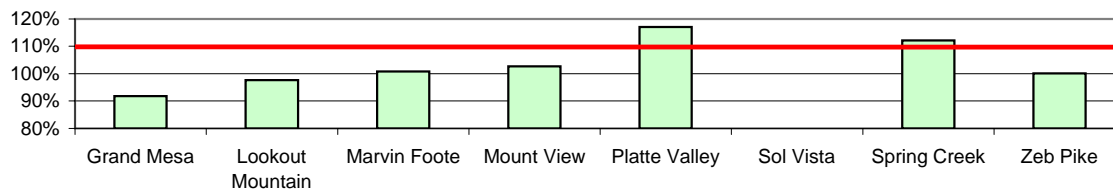
III. Commitment Services

A. State and Contract Secure ADP by Facility

Facility	Operational Capacity	December 2006	YTD	YTD % of Capacity	YTD % of Available Capacity
State Secure					
Adams	0	0.0	0.5	N/A	N/A
Gilliam	0	5.5	4.1	N/A	N/A
Grand Mesa	44	40.5	40.4	91.9%	91.9%
Lookout	214	212.8	209.0	97.6%	97.6%
Marvin Foote	22	14.7	22.2	100.8%	100.8%
Mount View	73	63.5	74.9	102.6%	102.6%
Platte Valley	66	54.7	77.3	117.1%	117.1%
Pueblo	0	2.3	1.7	N/A	N/A
Sol Vista*	13.3	16.7	3.8	28.6%	28.6%
Spring Creek	45	48.4	50.5	112.2%	112.2%
Zeb Pike	40	39.9	40.1	100.2%	100.2%
<i>State Subtotal</i>	<i>517.3</i>	<i>499.0</i>	<i>524.4</i>	<i>101.4%</i>	<i>101.4%</i>
Contract Secure/Staff Supervised					
Betty K. Marler Center		36.5	37.5		
Brown Center		1.7	1.9		
Cedar Springs		8.0	13.1		
Childrens Ark		3.0	1.7		
Devereux Cleo Wallace		22.9	21.3		
El Pueblo Ranch		2.0	4.8		
Excelsior Youth Center		2.0	1.2		
Glen Mills Schools		1.0	0.3		
Griffith Center, Southern Region		15.0	14.5		
Griffith Center, Grand Ave.		6.6	5.4		
Hilltop Youth Services (RCCF)		13.0	10.4		
Hilltop Youth Services (TRCCF)		5.0	5.4		
Jefferson Hills		44.3	44.5		
Jefferson Hills Aurora		65.3	66.0		
Kidz Ark Sterling		7.7	3.5		
Mountain Star Center		6.0	4.8		
Ridge View		431.0	443.4		
Robert DeNier		15.4	16.8		
Southern Peaks		31.9	26.4		
Turning Point Center		7.0	6.7		
<i>Contract Secure Subtotal</i>		<i>725.1</i>	<i>729.5</i>		

*Full Operating Capacity for Sol Vista is 20

**State Secure Commitment
Percent of Available Capacity by Facility**



□ YTD % of Available Capacity

December 2006

DYC Population Report

III. Commitment Services Continued

B. Community/Other Residential ADP by Facility

<u>Facility</u>	<u>December</u> <u>2006</u>	<u>YTD</u>
Community		
Alternative Youth Adventures	15.9	19.3
Boulder Community Treatment Center	0.8	0.7
Community Corrections & Work Release	2.0	2.9
Dale House Project	11.2	12.4
Daybreak & Daybreak Princeton	8.1	5.5
Denver Area Youth Services	6.8	9.8
Garfield County Community Corrections	0.0	0.3
Griffith Centers for Children, Inc.	6.0	5.3
Griffith Centers for Children, Inc.-Chins Up	0.0	0.2
Harmony Host Homes	0.0	0.4
Lost and Found, Inc., Arvada	3.2	1.2
Lost and Found Inc., Independent Living	0.0	1.1
Lost and Found Inc., Morrison	5.6	4.2
Marilee Center	1.5	1.5
Mt Evans Qualifying House	7.2	4.5
Reflections For Youth Inc., Prairie View	3.0	2.5
ROP - Canyon State Academy	1.0	0.4
Sobriety House/Stepping Stone	0.0	0.4
Southwest Colorado Community Corrections	1.0	0.2
Synergy Administration	6.0	6.0
Third Way Center	4.0	5.1
Third Way Center, Pontiac	3.2	6.1
Third Way Center, York	3.7	4.1
Third Way Center, Lincoln	7.0	5.1
Turning Point Center for Youth & Family	17.7	23.9
Turning Point, Mathews St.	6.3	7.7
Youthtrack, Jeffco	7.4	7.8
Youthtrack, San Luis Valley	2.0	2.3
Youthtrack, Work and Learn	11.0	11.2
Youth Ventures	17.1	13.1
<i>Community Subtotal</i>	<i>158.5</i>	<i>164.9</i>
<i>Private Contract Total</i>	<i>883.6</i>	<i>894.3</i>
<i>Other Residential*</i>	<i>18.5</i>	<i>20.4</i>
RESIDENTIAL TOTAL	1,401.2	1,439.1

*Includes Group Homes, Job Corps, Hospitals, Mental Health Institutes, Shelter Care, etc.

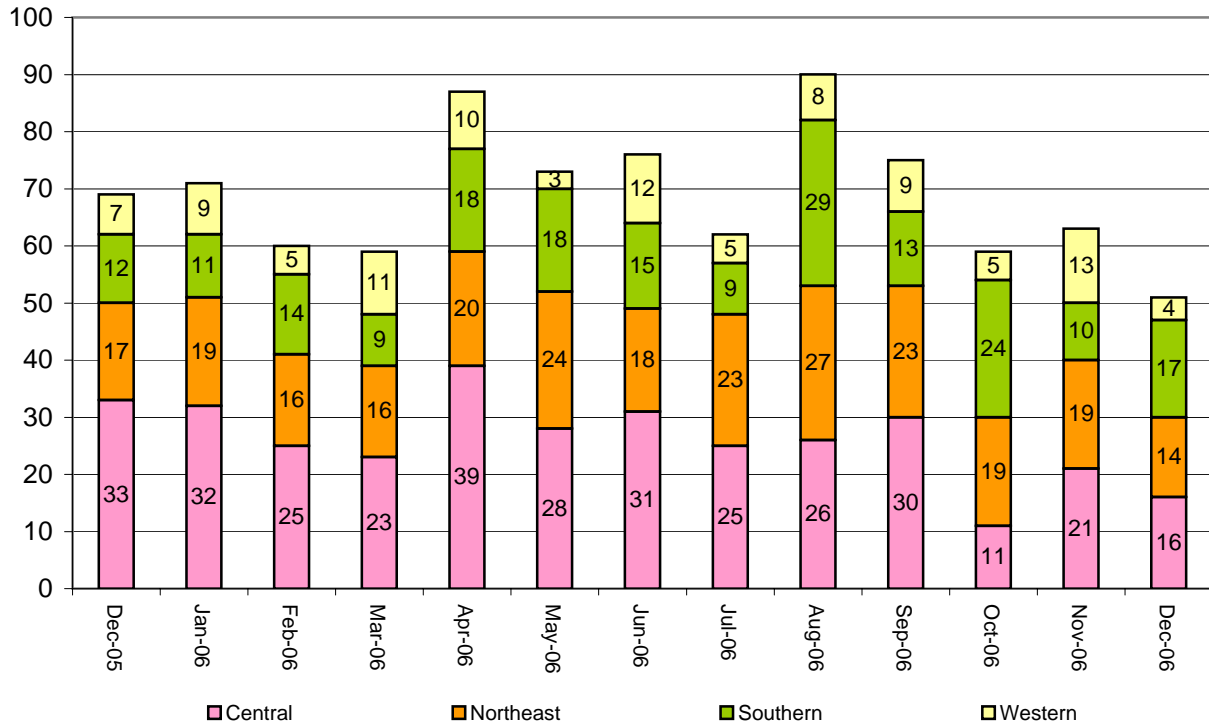
December 2006 DYC Population Report

IV. New Commitments

New Commitments by Region

	<u>December 2006</u>	<u>YTD</u>	<u>Dec 2005</u>	<u>Last YTD</u>
Central Region	16	146	33	198
Northeast Region	14	130	17	133
Southern Region	17	105	12	83
Western Region	4	44	7	41
New Commitment Total	51	425	69	455

Monthly New Commitments



December 2006 DYC Population Report

V. Parole Services

Parole ADP by Region

	<u>December 2006</u>	<u>YTD</u>	<u>Last YTD</u>
Central Region	244.4	233.0	210.5
Northeast Region	150.2	145.2	125.5
Southern Region	101.2	97.3	102.0
Western Region	62.5	59.0	74.1
Parole Total	558.3	534.5	512.1

Parole Intakes

Parole Discharges

Parole LOS

	<u>December 2006</u>		<u>YTD</u>		<u>YTD</u>	
Central Region	37	219	39	191	6.6	
Northeast Region	26	136	14	106	6.6	
Southern Region	5	87	11	74	7.3	
Western Region	11	50	8	49	7.2	
Missing Region Data	0	0	0	0		
Parole Total	79	492	72	420	6.8	

Monthly Parole ADP

