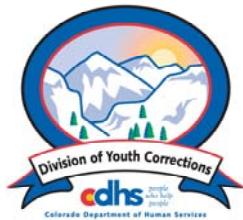


# NOVEMBER 2006 MONTHLY POPULATION REPORT

---

Prepared by the Division of Youth Corrections Research and Evaluation Unit December 20, 2006



**Colorado Department of Human Services**  
**Division of Youth Corrections**

---

Working with Colorado Communities to Achieve Justice

# November 2006

## DYC Population Report

<b>I.</b>	<b>Summary Population Data</b>	<b>1</b>
<b>II.</b>	<b>Detention ADP by Facility</b>	<b>2</b>
<b>III.</b>	<b>Commitment Services</b>	
	A. State and Contract Secure ADP by Facility	<b>3</b>
	B. Community/Other Residential ADP by Facility	<b>4</b>
<b>IV.</b>	<b>New Commitments</b>	<b>5</b>
<b>V.</b>	<b>Parole Services</b>	<b>6</b>

# November 2006 DYC Population Report

## I. Summary Population Data\*

DETAINED YOUTH	Average Daily Population (ADP)		Length of Stay (LOS)
	November 2006	YTD	YTD
State-Operated	377.3	394.8	13.8 days
Contracted Staff Secure	21.7	23.2	14.0 days
<b>Total Detained</b>	<b>399.1</b>	<b>418.0</b>	<b>13.8 days</b>

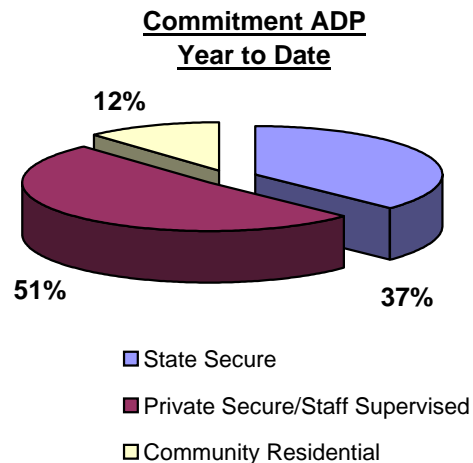
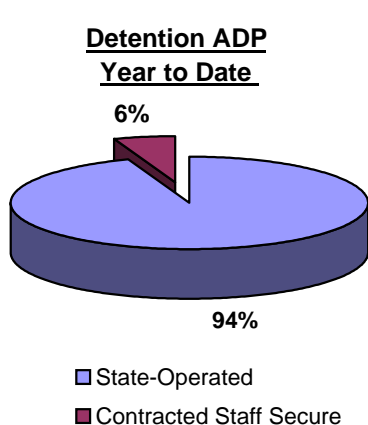
COMMITTED YOUTH	Average Daily Population (ADP)		Length of Stay (LOS)
	November 2006	YTD	YTD
State Secure	502.5	530.3	
Private Secure/Staff Supervised	727.2	729.2	
Community Residential	166.0	164.1	
Other Residential**	19.5	18.9	
<b>Total Committed Residential</b>	<b>1,415.2</b>	<b>1,442.6</b>	<b>18.7 months</b>
<i>Committed Residential w/o Boulder</i>	<i>1,408.4</i>	<i>1,436.2</i>	

PAROLED YOUTH	Average Daily Population (ADP)		Length of Stay (LOS)
	November 2006	YTD	YTD
<b>Total Paroled</b>	<b>541.8</b>	<b>526.2</b>	<b>6.8 months</b>

TOTAL STATEWIDE ADP	November 2006	YTD
	<b>2,356.1</b>	<b>2,386.8</b>



\*Due to rounding, totals shown may not be an exact sum of the subtotals

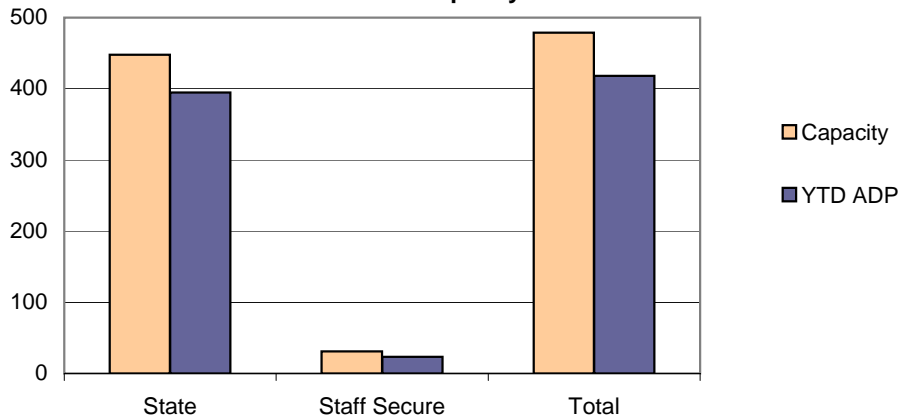
\*\*Includes Group Homes, Job Corps, Hospitals, Mental Health Institutes, Shelter Care, etc.

# November 2006 DYC Population Report

## II. Detention Data by Facility

Facility	Average Daily Population			New Admissions		YTD LOS in Days	
	Operating Capacity	November 2006	YTD	YTD % of Capacity	November 2006	YTD	LOS
<i>State Operated Detention</i>							
Adams	29	26.2	26.9	92.6%	69	322	12.7
Gilliam	70	64.6	66.3	94.7%	94	610	15.5
Grand Mesa	24	22.4	21.7	90.3%	44	229	13.2
Marvin Foote	96	79.5	85.8	89.3%	150	782	16.8
Mount View	60	44.9	48.9	81.6%	99	450	16.3
Platte Valley	69	58.1	62.2	90.2%	146	810	11.1
Pueblo	38	31.7	32.4	85.2%	72	366	13.5
Spring Creek	62	50.0	50.7	81.7%	120	654	11.2
<i>State Subtotal</i>	<i>448</i>	<i>377.3</i>	<i>394.8</i>	<i>88.1%</i>	<i>794</i>	<i>4,223</i>	<i>13.8</i>
<i>Staff Secure Detention</i>							
Brown Center	2	1.7	1.7	85.0%	5	20	12.2
Griffith Center	2	1.7	1.5	73.5%	3	12	17.2
Hilltop Youth Services	3	3.0	2.2	73.7%	2	17	20.1
Midway Remington	9	4.1	6.7	74.1%	14	95	13.1
Prowers	1	0.8	0.8	76.0%	0	4	29.1
Robert DeNier	9	6.8	6.9	76.2%	16	64	14.7
Youthtrack San Luis Valley	5	3.7	3.6	71.2%	10	49	12.0
<i>Staff Secure Total</i>	<i>31</i>	<i>21.7</i>	<i>23.2</i>	<i>74.9%</i>	<i>50</i>	<i>261</i>	<i>14.0</i>
<b>TOTAL</b>	<b>479</b>	<b>399.1</b>	<b>418.0</b>	<b>87.3%</b>	<b>844</b>	<b>4,484</b>	<b>13.8</b>

**Detention  
YTD ADP vs. Capacity**



# November 2006 DYC Population Report

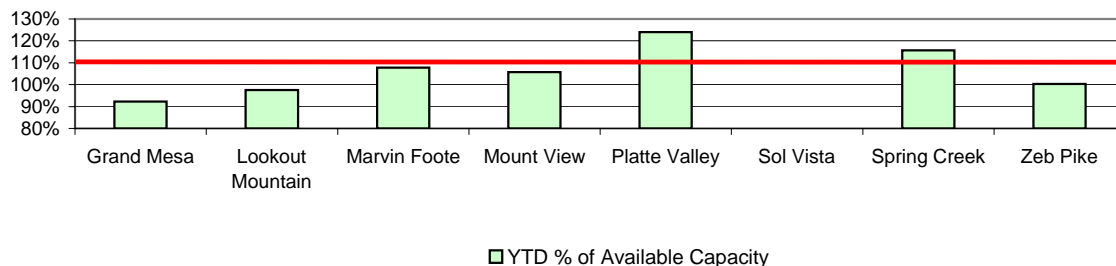
## III. Commitment Services

### A. State and Contract Secure ADP by Facility

Facility	Operational Capacity	November 2006	YTD	YTD % of Capacity	YTD % of Available Capacity
<b>State Secure</b>					
Adams	0	0.0	0.6	N/A	N/A
Gilliam	0	4.6	3.7	N/A	N/A
Grand Mesa	44	38.8	40.6	92.2%	92.2%
Lookout	214	211.3	208.9	97.6%	97.6%
Marvin Foote	22	16.3	23.7	107.5%	107.5%
Mount View	73	64.8	77.2	105.8%	105.8%
Platte Valley	66	66.8	81.8	124.0%	124.0%
Pueblo	0	2.6	1.6	N/A	N/A
Sol Vista*	13.3	6.1	1.2	8.9%	8.9%
Spring Creek	44	51.8	50.9	115.7%	115.7%
Zeb Pike	40	39.5	40.1	100.3%	100.3%
<i>State Subtotal</i>	<i>516.3</i>	<i>502.5</i>	<i>530.3</i>	<i>102.7%</i>	<i>102.7%</i>
<b>Contract Secure/Staff Supervised</b>					
Betty K. Marler Center		35.7	37.7		
Brown Center		1.5	1.9		
Cedar Springs		7.0	13.1		
Childrens Ark		3.0	1.4		
Devereux Cleo Wallace		23.2	21.0		
El Pueblo Ranch		4.2	5.4		
Excelsior Youth Center		1.0	1.0		
Glen Mills Schools		0.7	0.2		
Griffith Center, Southern Region		16.4	15.0		
Griffith Center, Grand Ave.		4.5	4.9		
Hilltop Youth Services (RCCF)		12.1	9.9		
Hilltop Youth Services (TRCCF)		4.1	5.5		
Jefferson Hills		44.2	44.6		
Jefferson Hills Aurora		64.0	66.0		
Kidz Ark Sterling		6.8	2.6		
Mountain Star Center		6.0	4.6		
Ridge View		444.1	446.4		
Robert DeNier		11.8	16.2		
Southern Peaks		29.1	25.3		
Turning Point Center		8.0	6.7		
<i>Contract Secure Subtotal</i>		<i>727.2</i>	<i>729.2</i>		

\*Full Operating Capacity for Sol Vista is 20

**State Secure Commitment  
Percent of Available Capacity by Facility**



# November 2006

## DYC Population Report

### III. Commitment Services Continued

#### B. Community/Other Residential APD by Facility

<u>Facility</u>	<u>November</u> <u>2006</u>	<u>YTD</u>
<b>Community</b>		
Alternative Youth Adventures	20.4	19.9
Boulder Community Treatment Center	0.0	0.7
Community Corrections & Work Release	3.1	3.0
Dale House Project	10.4	12.7
Daybreak & Daybreak Princeton	8.8	5.6
Denver Area Youth Services	10.1	10.4
Garfield County Community Corrections	0.7	0.4
Griffith Centers for Children, Inc.	5.5	5.2
Griffith Centers for Children, Inc.-Chins Up	0.0	0.3
Harmony Host Homes	0.0	0.5
Lost and Found, Inc., Arvada	2.6	0.8
Lost and Found Inc., Independent Living	0.2	1.3
Lost and Found Inc., Morrison	5.5	3.9
Mt Evans Qualifying House	5.8	2.7
Reflections For Youth Inc., Prairie View	3.0	2.4
ROP - Canyon State Academy	1.0	0.3
Sobriety House/Stepping Stone	0.0	0.5
Synergy Administration	6.0	6.1
Third Way Center	4.5	5.3
Third Way Center, Pontiac	4.8	6.7
Third Way Center, York	3.7	4.1
Third Way Center, Lincoln	7.0	4.8
Turning Point Center for Youth & Family	20.3	25.1
Turning Point, Mathews St.	7.6	8.0
Youthtrack, Jeffco	7.8	7.8
Youthtrack, San Luis Valley	1.6	2.3
Youthtrack, Work and Learn	11.5	11.2
Youth Ventures	14.3	12.3
<i>Community Subtotal</i>	<i>166.0</i>	<i>164.1</i>
<i>Private Contract Total</i>	<i>893.2</i>	<i>893.4</i>
<i>Other Residential*</i>	<i>19.5</i>	<i>18.9</i>
<b>RESIDENTIAL TOTAL</b>	<b>1,415.2</b>	<b>1,442.6</b>

\*Includes Group Homes, Job Corps, Hospitals, Mental Health Institutes, Shelter Care, etc.

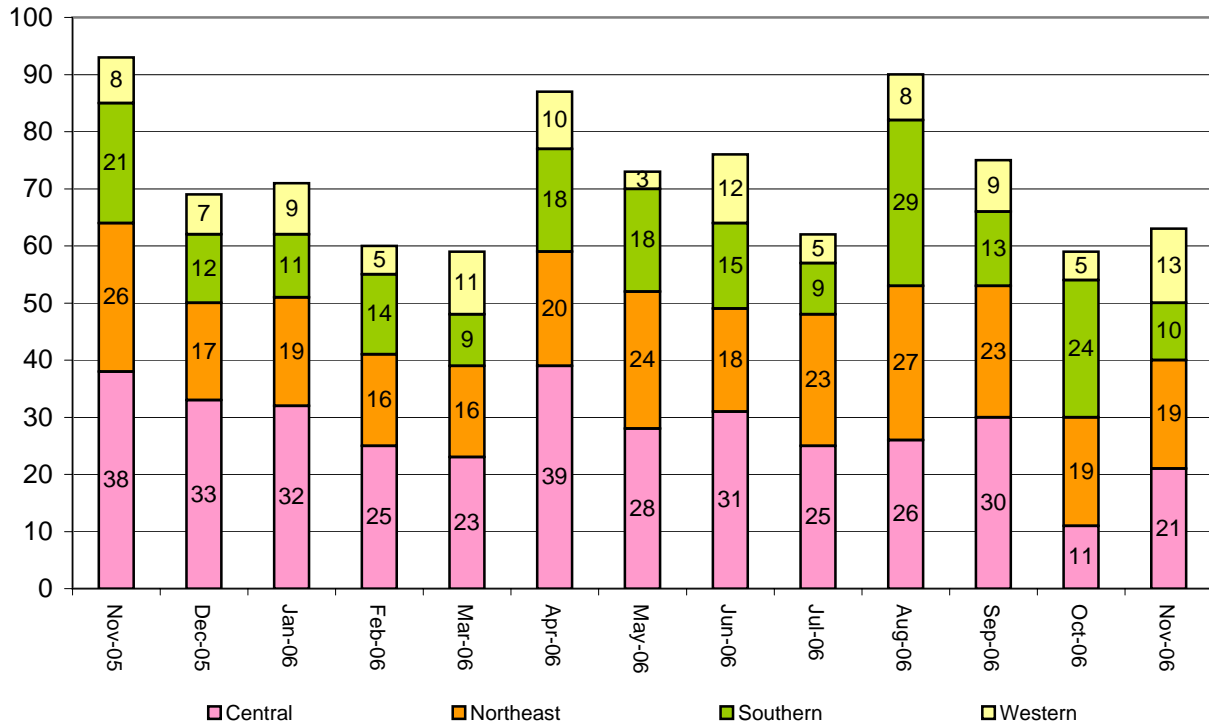
# November 2006 DYC Population Report

## IV. New Commitments

### New Commitments by Region

	<u>November 2006</u>	<u>YTD</u>	<u>Nov 2005</u>	<u>Last YTD</u>
Central Region	21	127	38	157
Northeast Region	19	115	26	116
Southern Region	10	88	21	71
Western Region	13	40	8	34
<b>New Commitment Total</b>	<b>63</b>	<b>370</b>	<b>93</b>	<b>378</b>

### Monthly New Commitments



# November 2006 DYC Population Report

## V. Parole Services

### Parole ADP by Region

	<u>November 2006</u>	<u>YTD</u>	<u>Last YTD</u>
Central Region	238.2	230.0	207.2
Northeast Region	146.3	142.2	125.7
Southern Region	98.7	97.1	102.3
Western Region	58.6	56.9	75.2
<b>Parole Total</b>	<b>541.8</b>	<b>526.2</b>	<b>510.4</b>

### Parole Intakes

### Parole Discharges

### Parole LOS

	<u>November 2006</u>		<u>YTD</u>		<u>YTD</u>	
Central Region	41	180	32	151	6.7	
Northeast Region	16	110	18	92	6.4	
Southern Region	12	82	8	63	7.4	
Western Region	10	39	5	41	6.9	
Missing Region Data	0	0	0	0		
<b>Parole Total</b>	<b>79</b>	<b>411</b>	<b>63</b>	<b>347</b>	<b>6.8</b>	

### Monthly Parole ADP

