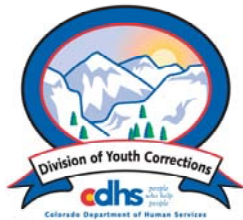


OCTOBER 2006 MONTHLY POPULATION REPORT

Prepared by the Division of Youth Corrections Research and Evaluation Unit November 21, 2006



Colorado Department of Human Services
Division of Youth Corrections

Working with Colorado Communities to Achieve Justice

October 2006

DYC Population Report

I.	Summary Population Data	1
II.	Detention ADP by Facility	2
III.	Commitment Services	
	A. State and Contract Secure ADP by Facility	3
	B. Community/Other Residential ADP by Facility	4
IV.	New Commitments	5
V.	Parole Services	6

October 2006 DYC Population Report

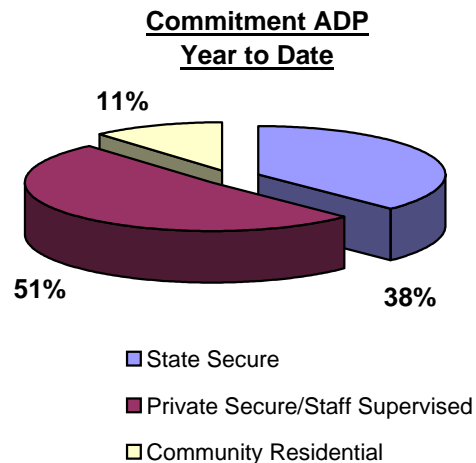
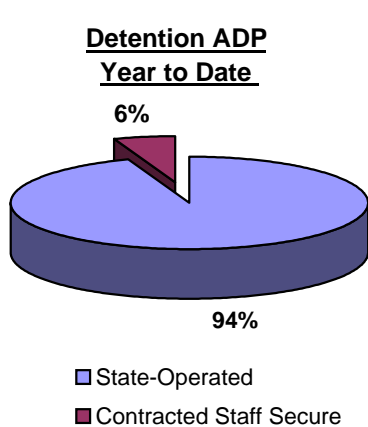
I. Summary Population Data*

DETAINED YOUTH	Average Daily Population (ADP)		Length of Stay (LOS)
	October 2006	YTD	YTD
State-Operated	405.6	399.2	13.8 days
Contracted Staff Secure	24.0	23.6	14.2 days
Total Detained	429.6	422.7	13.8 days

COMMITTED YOUTH	Average Daily Population (ADP)		Length of Stay (LOS)
	October 2006	YTD	YTD
State Secure	521.2	536.3	
Private Secure/Staff Supervised	736.5	728.7	
Community Residential	161.0	161.1	
Other Residential**	23.0	21.2	
Total Committed Residential	1,441.7	1,447.3	19.0 months
<i>Committed Residential w/o Boulder</i>	<i>1,435.1</i>	<i>1,441.0</i>	

PAROLED YOUTH	Average Daily Population (ADP)		Length of Stay (LOS)
	October 2006	YTD	YTD
Total Paroled	537.4	520.9	6.8 months

TOTAL STATEWIDE ADP	October 2006	YTD
	2,408.6	2,390.9



*Due to rounding, totals shown may not be an exact sum of the subtotals

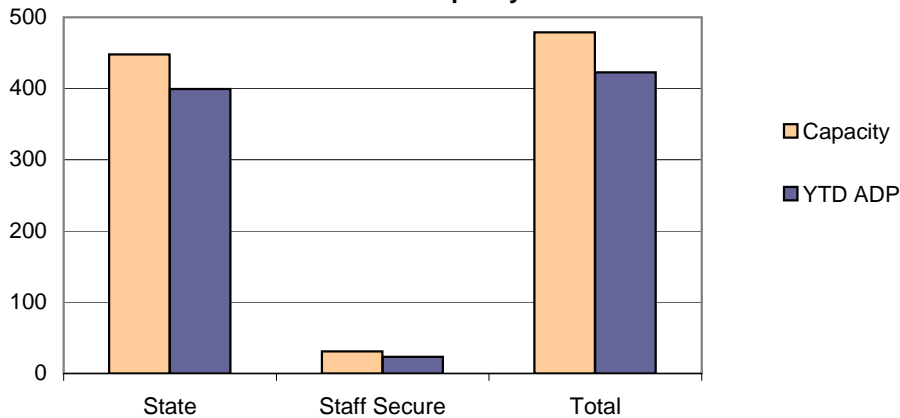
**Includes Group Homes, Job Corps, Hospitals, Mental Health Institutes, Shelter Care, etc.

October 2006 DYC Population Report

II. Detention ADP by Facility

Facility	Average Daily Population			New Admissions		YTD LOS in Days	
	Operating Capacity	October 2006	YTD	YTD % of Capacity	October 2006	YTD	LOS
<i>State Operated Detention</i>							
Adams	29	26.7	27.0	93.1%	77	253	13.1
Gilliam	70	68.0	66.5	95.1%	131	516	15.5
Grand Mesa	24	22.7	21.5	89.8%	42	185	13.9
Marvin Foote	96	89.4	87.6	91.2%	163	633	17.0
Mount View	60	54.1	50.1	83.4%	76	351	16.3
Platte Valley	69	63.2	63.6	92.1%	164	664	11.1
Pueblo	38	31.1	32.4	85.4%	82	294	13.4
Spring Creek	62	50.5	50.5	81.5%	129	534	10.6
<i>State Subtotal</i>	<i>448</i>	<i>405.6</i>	<i>399.2</i>	<i>89.1%</i>	<i>864</i>	<i>3,430</i>	<i>13.8</i>
<i>Staff Secure Detention</i>							
Brown Center	2	1.9	1.7	84.5%	5	15	12.6
Griffith Center	2	1.7	1.4	71.5%	2	9	11.2
Hilltop Youth Services	3	2.9	2.0	66.7%	4	15	17.4
Midway Remington	9	5.8	7.3	81.1%	25	81	14.0
Prowers	1	1.0	0.8	76.0%	2	4	29.8
Robert DeNier	9	7.2	6.9	76.1%	10	48	15.4
Youthtrack San Luis Valley	5	3.6	3.5	70.4%	10	39	11.7
<i>Staff Secure Total</i>	<i>31</i>	<i>24.0</i>	<i>23.6</i>	<i>76.0%</i>	<i>58</i>	<i>211</i>	<i>14.2</i>
TOTAL	479	429.6	422.7	88.3%	922	3,641	13.8

**Detention
YTD ADP vs. Capacity**



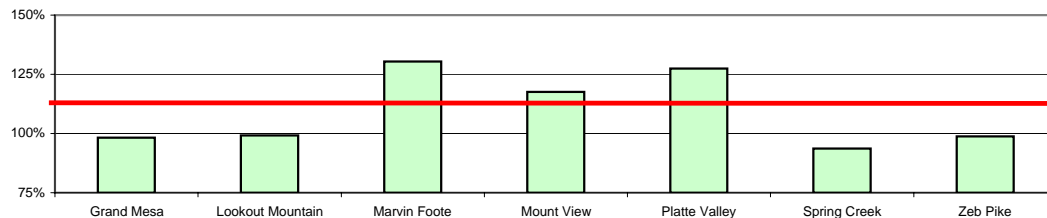
October 2006 DYC Population Report

III. Commitment Services

A. State and Contract Secure ADP by Facility

<u>Facility</u>	<u>Operational Capacity</u>	<u>October 2006</u>	<u>YTD</u>	<u>YTD % of Capacity</u>	<u>YTD % of Available Capacity</u>
State Secure					
Adams	0	0.1	0.8	N/A	N/A
Gilliam	0	2.8	3.5	N/A	N/A
Grand Mesa	44	41.1	41.0	93.2%	93.2%
Lookout	214	210.8	208.4	97.4%	97.4%
Marvin Foote	22	18.6	25.3	115.2%	115.2%
Mount View	73	74.2	80.1	109.8%	109.8%
Platte Valley	66	77.0	85.5	129.5%	129.5%
Pueblo	0	1.3	1.3	N/A	N/A
Spring Creek	44	55.2	50.1	113.9%	113.9%
Zeb Pike	40	40.1	40.2	100.6%	100.6%
<i>State Subtotal</i>	<i>503</i>	<i>521.2</i>	<i>536.3</i>	<i>106.6%</i>	<i>106.6%</i>
Contract Secure/Staff Supervised					
Betty K. Marler Center		37.0	37.1		
Brown Center		1.9	2.0		
Cedar Springs		11.0	15.6		
Childrens Ark		1.7	1.0		
Devereux Cleo Wallace		23.6	20.4		
El Pueblo Ranch		5.8	5.7		
Excelsior Youth Center		1.0	1.0		
Glen Mills Schools		0.0	0.0		
Griffith Center, Southern Region		15.4	14.7		
Griffith Center, Grand Ave.		4.4	5.0		
Hilltop Youth Services (RCCF)		12.9	9.3		
Hilltop Youth Services (TRCCF)		5.6	5.8		
Jefferson Hills		44.3	44.7		
Jefferson Hills Aurora		63.9	66.5		
Kidz Ark Sterling		4.2	1.6		
Mountain Star Center		5.2	4.2		
Ridge View		451.0	445.9		
Robert DeNier		15.7	17.2		
Southern Peaks		23.8	24.4		
Turning Point Center		8.1	6.3		
<i>Contract Secure Subtotal</i>		<i>736.5</i>	<i>728.7</i>		

**State Secure Commitment
Percent of Available Capacity by Facility**



□ YTD % of Available Capacity

October 2006

DYC Population Report

III. Commitment Services Continued

B. Community/Other Residential APD by Facility

<u>Facility</u>	<u>October</u> <u>2006</u>	<u>YTD</u>
Community		
Alternative Youth Adventures	18.6	19.3
Boulder Community Treatment Center	0.4	0.8
Community Corrections & Work Release	3.7	3.0
Dale House Project	11.5	13.1
Daybreak & Daybreak Princeton	6.9	4.9
Denver Area Youth Services	10.7	10.5
Garfield County Community Corrections	1.0	0.3
Griffith Centers for Children, Inc.	5.7	5.1
Griffith Centers for Children, Inc.-Chins Up	0.0	0.4
Harmony Host Homes	0.0	0.7
Lost and Found, Inc., Arvada	1.3	0.3
Lost and Found Inc., Independent Living	1.5	1.6
Lost and Found Inc., Morrison	3.6	3.5
Reflections For Youth Inc., Prairie View	3.0	2.2
ROP - Canyon State Academy	0.3	0.1
Sobriety House/Stepping Stone	0.0	0.6
Synergy Administration	5.1	6.1
Third Way Center	5.1	5.4
Third Way Center, Pontiac	5.4	7.1
Third Way Center, York	3.9	4.2
Third Way Center, Lincoln	6.3	4.2
Turning Point Center for Youth & Family	22.4	26.3
Turning Point, Mathews St.	9.8	8.1
Youthtrack, Jeffco	9.1	7.9
Youthtrack, San Luis Valley	3.0	2.5
Youthtrack, Work and Learn	11.5	11.1
Youth Ventures	11.3	11.7
<i>Community Subtotal</i>	<i>161.0</i>	<i>161.1</i>
<i>Private Contract Total</i>	<i>897.6</i>	<i>889.8</i>
<i>Other Residential*</i>	<i>23.0</i>	<i>21.2</i>
RESIDENTIAL TOTAL	1,441.7	1,447.3

**Includes Group Homes, Job Corps, Hospitals, Mental Health Institutes, Shelter Care, etc.*

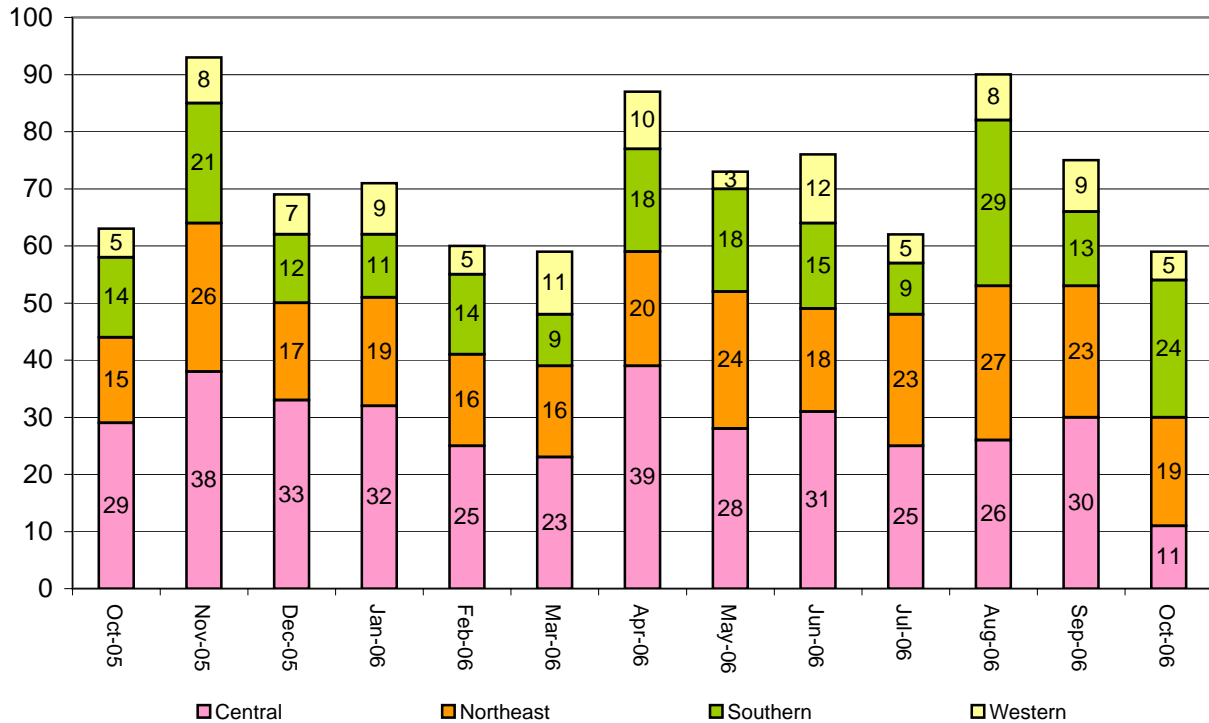
October 2006 DYC Population Report

IV. New Commitments

New Commitments by Region

	<u>October 2006</u>	<u>YTD</u>	<u>Oct 2005</u>	<u>Last YTD</u>
Central Region	11	103	29	118
Northeast Region	19	96	15	90
Southern Region	24	77	14	50
Western Region	5	27	5	25
New Commitment Total	59	303	63	283

Monthly New Commitments



October 2006 DYC Population Report

V. Parole Services

Parole ADP by Region

	<u>October 2006</u>	<u>YTD</u>	<u>Last YTD</u>
Central Region	228.6	227.6	207.0
Northeast Region	153.1	141.9	126.2
Southern Region	100.6	94.9	104.6
Western Region	55.1	56.5	75.3
Parole Total	537.4	520.9	513.2

Parole Intakes

Parole Discharges

Parole LOS

	<u>October 2006</u>	<u>YTD</u>	<u>October 2006</u>	<u>YTD</u>	<u>YTD</u>
Central Region	33	139	27	119	6.6
Northeast Region	14	95	15	71	6.6
Southern Region	11	70	14	53	7.1
Western Region	6	29	5	36	7.0
Missing Region Data	0	0	0	0	
Parole Total	64	333	61	279	6.8

Monthly Parole ADP

