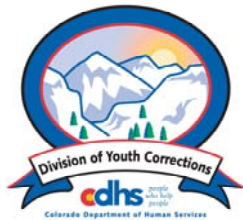


# SEPTEMBER 2006 MONTHLY POPULATION REPORT

---

Prepared by the Division of Youth Corrections Research and Evaluation Unit October 27, 2006



**Colorado Department of Human Services**  
**Division of Youth Corrections**

---

Working with Colorado Communities to Achieve Justice

# September 2006

## DYC Population Report

<b>I.</b>	<b>Summary Population Data</b>	<b>1</b>
<b>II.</b>	<b>Detention ADP by Facility</b>	<b>2</b>
<b>III.</b>	<b>Commitment Services</b>	
	A. State and Contract Secure ADP by Facility	<b>3</b>
	B. Community/Other Residential ADP by Facility	<b>4</b>
<b>IV.</b>	<b>New Commitments</b>	<b>5</b>
<b>V.</b>	<b>Parole Services</b>	<b>6</b>

# September 2006 DYC Population Report

## I. Summary Population Data\*

DETAINED YOUTH	Average Daily Population (ADP)		Length of Stay (LOS)
	September 2006	YTD	YTD
State-Operated	392.4	396.1	13.9 days
Contracted Staff Secure	25.8	24.1	15.0 days
<b>Total Detained</b>	<b>418.3</b>	<b>420.2</b>	<b>14.0 days</b>

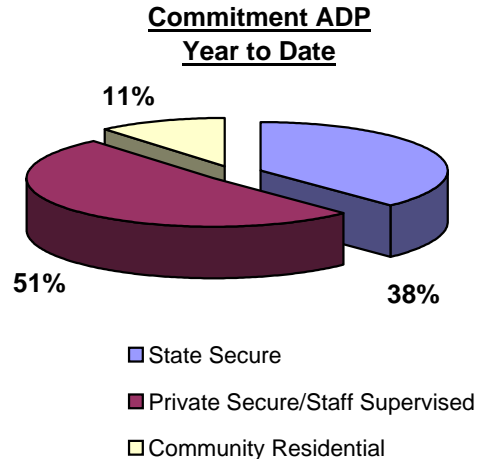
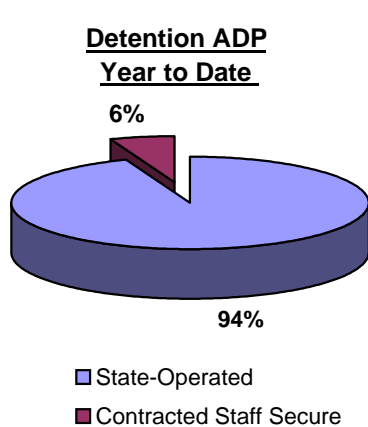
COMMITTED YOUTH	Average Daily Population (ADP)		Length of Stay (LOS)
	September 2006	YTD	YTD
State Secure	535.0	540.8	
Private Secure/Staff Supervised	732.5	726.9	
Community Residential	155.8	160.5	
Other Residential**	16.3	18.4	
<b>Total Committed Residential</b>	<b>1,439.7</b>	<b>1,446.6</b>	<b>18.7 months</b>
<i>Committed Residential w/o Boulder</i>	<i>1,434.1</i>	<i>1,440.4</i>	

PAROLED YOUTH	Average Daily Population (ADP)		Length of Stay (LOS)
	September 2006	YTD	YTD
<b>Total Paroled</b>	<b>530.6</b>	<b>512.6</b>	<b>6.8 months</b>

TOTAL STATEWIDE ADP	September 2006	YTD
	<b>2,388.6</b>	<b>2,379.4</b>



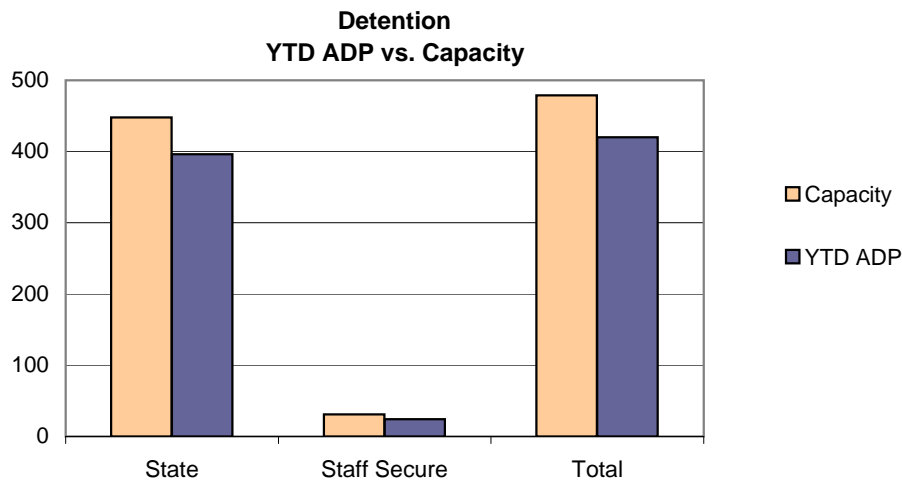
\*Due to rounding, totals shown may not be an exact sum of the subtotals

\*\*Includes Group Homes, Job Corps, Hospitals, Mental Health Institutes, Shelter Care, etc.

# September 2006 DYC Population Report

## II. Detention ADP by Facility

Facility	Average Daily Population			New Admissions		YTD LOS in Days	
	Operating Capacity	September 2006	YTD	YTD % of Capacity	September 2006	YTD	LOS
<i>State Operated Detention</i>							
Adams	29	25.0	26.9	92.9%	60	176	13.8
Gilliam	70	65.5	65.8	93.9%	140	385	15.5
Grand Mesa	24	22.3	21.0	87.6%	46	143	11.7
Marvin Foote	96	87.2	87.4	91.0%	155	471	17.4
Mount View	60	52.7	48.6	81.0%	91	275	15.5
Platte Valley	69	61.9	63.3	91.7%	168	499	11.2
Pueblo	38	29.7	32.9	86.6%	68	212	14.0
Spring Creek	62	48.2	50.3	81.1%	116	405	10.9
<i>State Subtotal</i>	<i>448</i>	<i>392.4</i>	<i>396.1</i>	<i>88.4%</i>	<i>844</i>	<i>2,566</i>	<i>13.9</i>
<i>Staff Secure Detention</i>							
Brown Center	2	1.6	1.6	79.5%	6	10	15.5
Griffith Center	2	1.9	1.4	67.5%	1	7	9.0
Hilltop Youth Services	3	2.2	1.7	57.3%	4	11	20.5
Midway Remington	9	7.0	7.8	86.6%	19	56	16.6
Prowers	1	1.0	0.7	67.0%	1	2	45.4
Robert DeNier	9	8.9	7.5	83.1%	6	39	13.5
Youthtrack San Luis Valley	5	3.4	3.5	69.8%	10	29	11.0
<i>Staff Secure Total</i>	<i>31</i>	<i>25.8</i>	<i>24.1</i>	<i>77.7%</i>	<i>47</i>	<i>154</i>	<i>15.0</i>
<b>TOTAL</b>	<b>479</b>	<b>418.3</b>	<b>420.2</b>	<b>87.7%</b>	<b>891</b>	<b>2,720</b>	<b>14.0</b>



# September 2006 DYC Population Report

## III. Commitment Services

### A. State and Contract Secure ADP by Facility

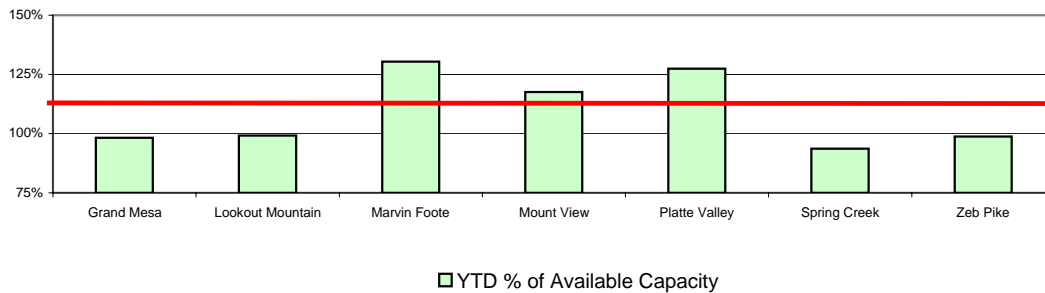
<u>Facility</u>	<u>Operational Capacity</u>	<u>September 2006</u>	<u>YTD</u>	<u>YTD % of Capacity</u>	<u>YTD % of Available Capacity</u>
<b>State Secure</b>					
Adams	0	0.9	1.0	N/A	N/A
Gilliam	0	5.1	3.8	N/A	N/A
Grand Mesa	44	44.7	40.0	90.8%	90.8%
Lookout	214	208.8	207.7	97.0%	97.0%
Marvin Foote	22	21.5	27.6	125.5%	125.5%
Mount View	73	75.4	82.1	112.5%	112.5%
Platte Valley	66	80.9	88.3	133.8%	133.8%
Pueblo	0	1.4	1.3	N/A	N/A
Spring Creek	44	56.3	48.8	110.8%	110.8%
Zeb Pike	40	40.0	40.3	100.7%	100.7%
<i>State Subtotal</i>	<i>503</i>	<i>535.0</i>	<i>540.8</i>	<i>107.5%</i>	<i>107.5%</i>

### Contract Secure/Staff Supervised

Betty K. Marler Center		38.1	38.1
Brown Center		2.4	2.1
Cedar Springs*		14.0	17.1
Childrens Ark		1.0	0.8
Devereux Cleo Wallace		22.8	19.4
El Pueblo Ranch		5.3	5.7
Excelsior Youth Center		1.0	1.0
Glen Mills Schools		0.0	0.1
Griffith Center (PRTF)		13.9	14.5
Griffith Center, Grand Ave.		3.4	4.3
Griffith Center (TRCCF)		0.0	0.0
Hilltop Youth Services (RCCF)		9.0	7.5
Hilltop Youth Services (TRCCF)		3.8	5.9
Jefferson Hills		43.7	45.1
Jefferson Hills Aurora		68.2	67.4
Kidz Ark Sterling		1.5	0.8
Mountain Star Center		5.0	3.9
Ridge View		449.5	445.4
Robert DeNier		18.8	17.7
Southern Peaks		24.1	24.6
Turning Point Center		7.1	5.7
<i>Contract Secure Subtotal</i>		<i>732.5</i>	<i>726.9</i>

\*ADP is a sum of two or more program types or locations

**State Secure Commitment  
Percent of Available Capacity by Facility**



# September 2006

## DYC Population Report

### III. Commitment Services Continued

#### B. Community/Other Residential APD by Facility

<u>Facility</u>	<u>September</u> <u>2006</u>	<u>YTD</u>
<b>Community</b>		
Alternative Youth Adventures (TRCCF)	17.8	19.2
Alternative Youth Adventures (RCCF)	0.0	0.1
Boulder Community Treatment Center	1.0	1.0
Community Corrections & Work Release	2.7	2.8
Dale House Project	12.3	13.4
Daybreak & Daybreak Princeton*	5.9	4.2
Denver Area Youth Services	9.0	9.9
Garfield County Community Corrections	0.3	0.1
Griffith Centers for Children, Inc.	4.9	4.9
Griffith Centers for Children, Inc.-Chins Up	0.0	0.5
Harmony Host Homes	0.6	0.9
Lost and Found Inc., Independent Living	1.0	1.6
Lost and Found Inc., Morrison	3.0	3.5
Reflections For Youth Inc., Prairie View	2.0	1.9
Sobriety House/Stepping Stone	0.9	0.8
Synergy Administration	6.0	6.4
Third Way Center	5.5	5.6
Third Way Center, Pontiac	6.4	7.7
Third Way Center, York	4.6	4.3
Third Way Center, Lincoln	4.4	3.5
Turning Point Center for Youth & Family	25.0	27.7
Turning Point, Mathews St. (TRCCF)	8.8	7.5
Turning Point, Mathews St. (PRTF)	0.0	0.0
Youthtrack, Jeffco	9.1	7.5
Youthtrack Pal, Aurora	1.0	0.5
Youthtrack, San Luis Valley	2.2	2.4
Youthtrack, Work and Learn	11.6	11.0
Youth Ventures*	9.8	11.8
<i>Community Subtotal</i>	<i>155.8</i>	<i>160.5</i>
<i>Private Contract Total</i>	<i>888.3</i>	<i>887.4</i>
<i>Other Residential**</i>	<i>16.3</i>	<i>18.4</i>
<b>RESIDENTIAL TOTAL</b>	<b>1,439.7</b>	<b>1,446.6</b>

\*ADP is a sum of two or more program types or locations

\*\*Includes Group Homes, Job Corps, Hospitals, Mental Health Institutes, Shelter Care, etc.

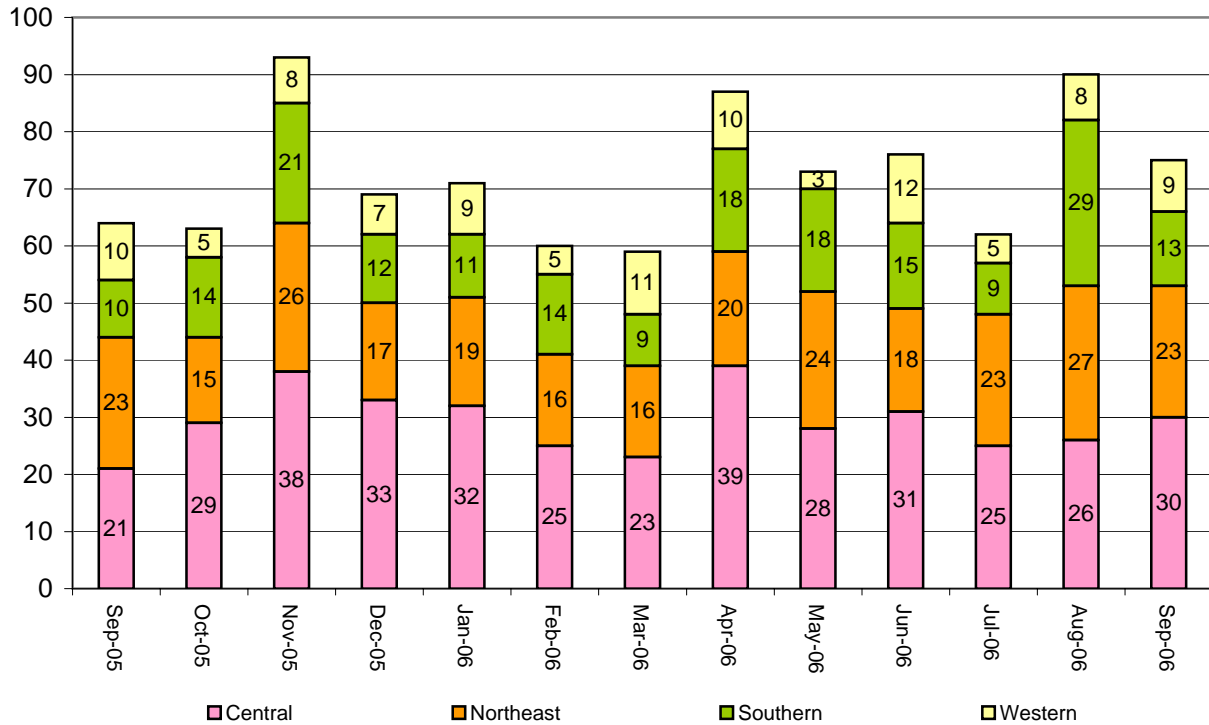
# September 2006 DYC Population Report

## IV. New Commitments

### New Commitments by Region

	<u>September 2006</u>	<u>YTD</u>	<u>Sept 2005</u>	<u>Last YTD</u>
Central Region	30	90	21	82
Northeast Region	23	77	23	70
Southern Region	13	53	10	33
Western Region	9	22	10	20
<b>New Commitment Total</b>	<b>75</b>	<b>242</b>	<b>64</b>	<b>205</b>

### Monthly New Commitments



# September 2006 DYC Population Report

## V. Parole Services

### Parole ADP by Region

	<u>September 2006</u>	<u>YTD</u>	<u>Last YTD</u>
Central Region	224.5	225.0	204.5
Northeast Region	148.4	136.4	124.7
Southern Region	99.4	93.9	102.9
Western Region	58.3	57.3	72.7
<b>Parole Total</b>	<b>530.6</b>	<b>512.6</b>	<b>504.8</b>

### Parole Intakes

### Parole Discharges

### Parole LOS

	<u>September 2006</u>	<u>YTD</u>	<u>September 2006</u>	<u>YTD</u>	<u>YTD</u>
Central Region	30	107	26	92	6.7
Northeast Region	30	81	20	56	6.6
Southern Region	15	59	14	39	7.0
Western Region	8	23	6	26	7.8
Missing Region Data	0	0	0	0	
<b>Parole Total</b>	<b>83</b>	<b>270</b>	<b>66</b>	<b>213</b>	<b>6.8</b>

### Monthly Parole ADP

