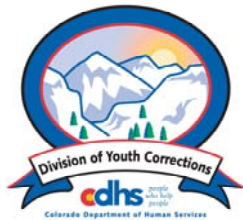


AUGUST 2006 MONTHLY POPULATION REPORT

Prepared by the Division of Youth Corrections Research and Evaluation Unit September 25, 2006



Colorado Department of Human Services
Division of Youth Corrections

Working with Colorado Communities to Achieve Justice

August 2006

DYC Population Report

I.	Summary Population Data	1
II.	Detention ADP by Facility	2
III.	Commitment Services	
	A. State and Contract Secure ADP by Facility	3
	B. Community/Other Residential ADP by Facility	4
IV.	New Commitments	5
V.	Parole Services	6

August 2006 DYC Population Report

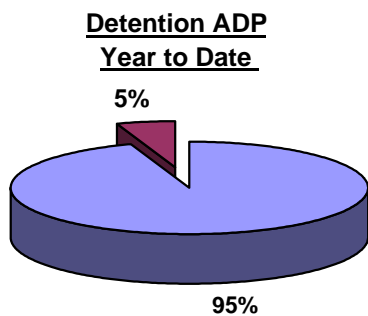
I. Summary Population Data

DETAINED YOUTH	Average Daily Population (ADP)		Length of Stay (LOS)
	August 2006	YTD	YTD
State-Operated	409.3	401.3	13.3 days
Contracted Staff Secure	23.0	22.4	12.8 days
Total Detained	432.3	423.7	13.3 days

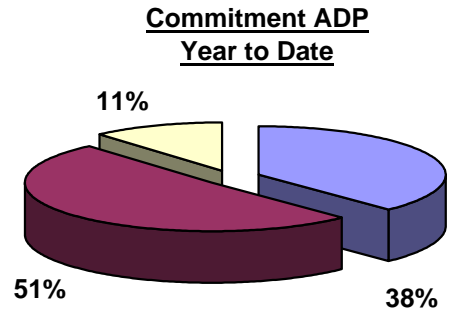
COMMITTED YOUTH	Average Daily Population (ADP)		Length of Stay (LOS)
	August 2006	YTD	YTD
State Secure	539.4	543.2	
Private Secure/Staff Supervised	729.3	727.1	
Community Residential	158.8	162.6	
Other Residential*	21.1	19.5	
Total Committed Residential	1,448.6	1,452.5	18.2 months
<i>Committed Residential w/o Boulder</i>	<i>1,443.3</i>	<i>1,446.0</i>	

PAROLED YOUTH	Average Daily Population (ADP)		Length of Stay (LOS)
	August 2006	YTD	YTD
Total Paroled	516.8	502.4	6.6 months

TOTAL STATEWIDE ADP	2,397.8	2,378.7
----------------------------	----------------	----------------



■ State-Operated
■ Contracted Staff Secure



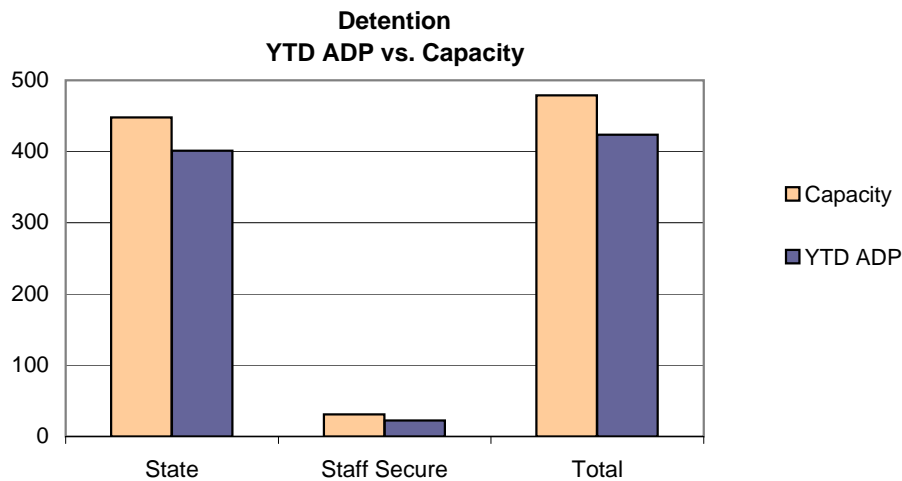
■ State Secure
■ Private Secure/Staff Supervised
■ Community Residential

*Includes Group Homes, Job Corps, Hospitals, Mental Health Institutes, Shelter Care, etc.

August 2006 DYC Population Report

II. Detention ADP by Facility

Facility	Average Daily Population			New Admissions		YTD LOS in Days	
	Operating Capacity	August 2006	YTD	YTD % of Capacity	August 2006	YTD	LOS
<i>State Operated Detention</i>							
Adams	29	28.4	27.8	95.9%	64	116	14.1
Gilliam	70	64.7	65.2	93.2%	123	246	15.1
Grand Mesa	24	21.8	20.5	85.5%	49	97	11.8
Marvin Foote	96	87.1	87.2	90.9%	163	316	16.3
Mount View	60	49.4	47.2	78.6%	90	184	15.3
Platte Valley	69	62.6	64.1	92.9%	163	331	10.8
Pueblo	38	34.1	34.3	90.3%	66	144	12.8
Spring Creek	62	61.3	55.0	88.7%	159	289	10.2
<i>State Subtotal</i>	<i>448</i>	<i>409.3</i>	<i>401.3</i>	<i>89.6%</i>	<i>877</i>	<i>1,723</i>	<i>13.3</i>
<i>Staff Secure Detention</i>							
Brown Center	2	1.3	1.6	79.5%	2	4	20.2
Griffith Center	2	1.9	1.1	55.5%	4	6	8.9
Hilltop Youth Services	3	1.9	1.5	50.0%	5	7	24.3
Midway Remington	9	7.1	7.1	79.2%	20	37	11.0
Prowers	1	1.0	0.5	51.0%	0	1	0.0
Robert DeNier	9	7.0	7.0	77.8%	16	33	11.1
Youthtrack San Luis Valley	5	2.8	3.6	71.2%	7	19	14.2
<i>Staff Secure Total</i>	<i>31</i>	<i>23.0</i>	<i>22.4</i>	<i>72.3%</i>	<i>54</i>	<i>107</i>	<i>12.8</i>
TOTAL	479	432.3	423.7	88.5%	931	1,830	13.3



August 2006 DYC Population Report

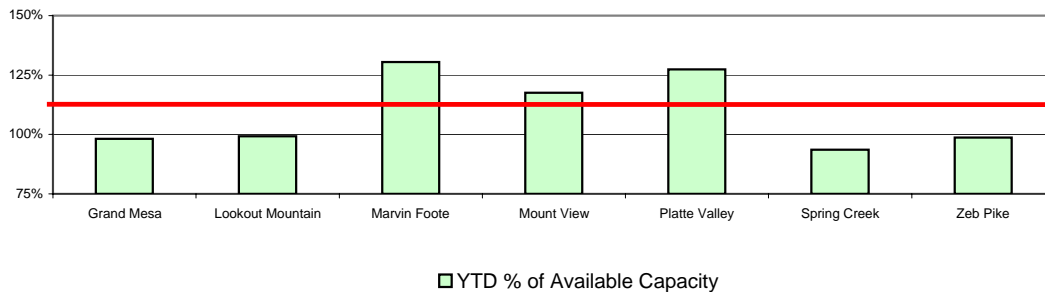
III. Commitment Services

A. State and Contract Secure ADP by Facility

Facility	<u>Operational Capacity</u>	<u>August 2006</u>	<u>YTD</u>	<u>YTD % of Capacity</u>	<u>YTD % of Available Capacity</u>
State Secure					
Adams	0	1.3	1.0	N/A	N/A
Gilliam	0	2.7	3.3	N/A	N/A
Grand Mesa	44	38.4	37.7	85.7%	85.7%
Lookout	214	204.4	207.1	96.8%	96.8%
Marvin Foote	22	26.7	30.6	138.9%	138.9%
Mount View	73	81.8	85.4	117.0%	117.0%
Platte Valley	66	93.7	91.4	138.5%	138.5%
Pueblo	0	1.1	1.3	N/A	N/A
Spring Creek	44	49.0	45.1	102.5%	102.5%
Zeb Pike	40	40.3	40.4	101.1%	101.1%
<i>State Subtotal</i>	<i>503</i>	<i>539.4</i>	<i>543.2</i>	<i>108.0%</i>	<i>108.0%</i>
Contract Secure/Staff Supervised					
Betty K. Marler Center		37.8	38.0		
Brown Center		2.0	1.9		
Cedar Springs*		17.5	19.4		
Childrens Ark		1.2	0.7		
Devereux Cleo Wallace		18.4	17.7		
El Pueblo Ranch		5.0	5.8		
Excelsior Youth Center		1.0	1.0		
Glen Mills Schools		0.0	0.1		
Griffith Center (PRTF)		13.7	15.0		
Griffith Center, Grand Ave.		4.3	4.7		
Griffith Center (TRCCF)		0.0	0.0		
Hilltop Youth Services (RCCF)		7.8	6.8		
Hilltop Youth Services (TRCCF)		5.8	7.7		
Jefferson Hills		44.9	46.8		
Jefferson Hills Aurora		67.6	67.0		
Kidz Ark Sterling		0.9	0.4		
Mountain Star Center		3.6	3.3		
Ridge View		448.1	443.7		
Robert DeNier		18.6	17.2		
Southern Peaks		25.0	24.9		
Turning Point Center		6.2	5.1		
<i>Contract Secure Subtotal</i>		<i>729.3</i>	<i>727.1</i>		

*ADP is a sum of two or more program types or locations

**State Secure Commitment
Percent of Available Capacity by Facility**



August 2006

DYC Population Report

III. Commitment Services Continued

B. Community/Other Residential APD by Facility

<u>Facility</u>	<u>August</u> <u>2006</u>	<u>YTD</u>
Community		
Alternative Youth Adventures (TRCCF)	19.5	19.8
Alternative Youth Adventures (RCCF)	0.0	0.1
Boulder Community Treatment Center	1.0	1.0
Community Corrections & Work Release	2.6	2.8
Dale House Project	13.5	13.9
Daybreak & Daybreak Princeton	3.9	3.1
Denver Area Youth Services	9.7	10.4
Griffith Centers for Children, Inc.	4.2	5.0
Griffith Centers for Children, Inc.-Chins Up	0.4	0.7
Harmony Host Homes	1.0	1.0
Lost and Found Inc., Independent Living	1.3	1.9
Lost and Found Inc., Morrison	3.3	3.7
Reflections For Youth Inc., Prairie View	2.0	1.9
Sobriety House/Stepping Stone	1.0	0.8
Synergy Administration	6.0	6.6
Third Way Center	5.9	5.6
Third Way Center, Pontiac	7.3	8.2
Third Way Center, York	4.3	4.2
Third Way Center, Lincoln	3.1	3.1
Turning Point Center for Youth & Family	29.1	28.9
Turning Point, Mathews St. (TRCCF)	7.1	6.8
Turning Point, Mathews St. (PRTF)	0.0	0.0
Youthtrack, Jeffco	8.0	7.2
Youthtrack, San Luis Valley	2.8	2.5
Youthtrack, Work and Learn	10.6	10.7
Youth Ventures*	11.4	12.8
<i>Community Subtotal</i>	<i>158.8</i>	<i>162.6</i>
<i>Private Contract Total</i>	<i>888.1</i>	<i>889.8</i>
<i>Other Residential**</i>	<i>21.1</i>	<i>19.5</i>
RESIDENTIAL TOTAL	1,448.6	1,452.5

*ADP is a sum of two or more program types or locations

**Includes Group Homes, Job Corps, Hospitals, Mental Health Institutes, Shelter Care, etc.

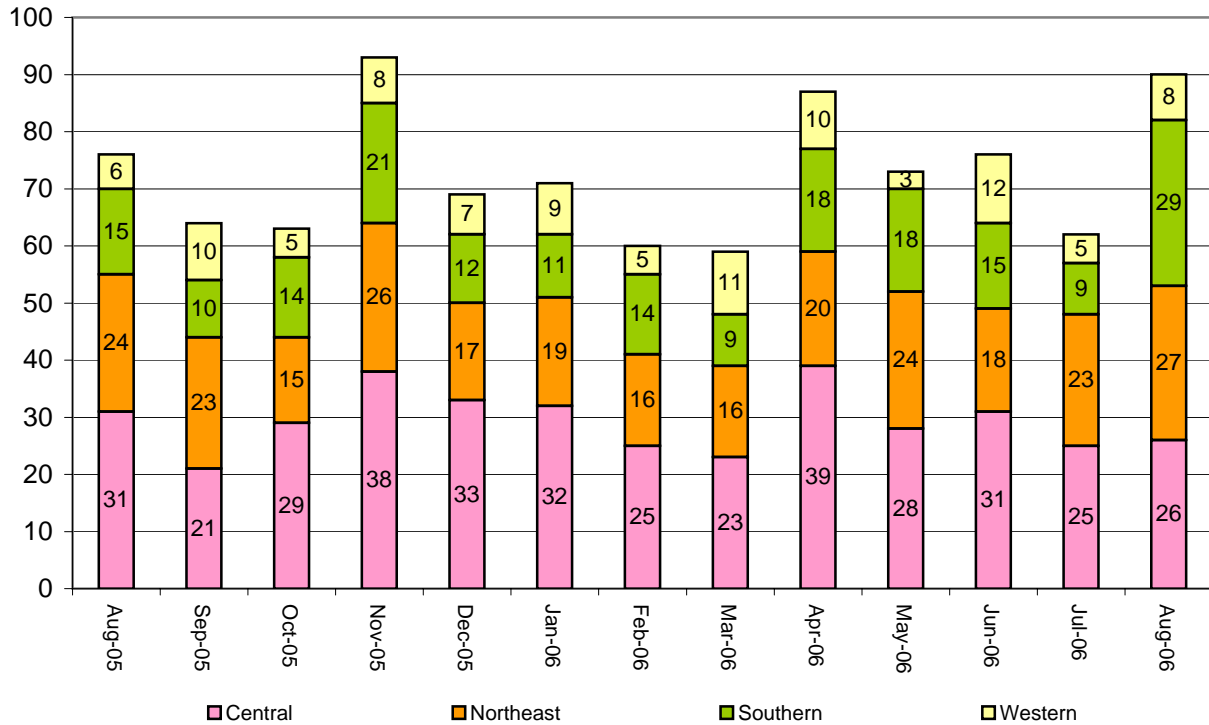
August 2006 DYC Population Report

IV. New Commitments

New Commitments by Region

	<u>August 2006</u>	<u>YTD</u>	<u>Aug 2005</u>	<u>Last YTD</u>
Central Region	26	53	31	54
Northeast Region	27	52	24	45
Southern Region	29	38	15	22
Western Region	8	13	6	10
New Commitment Total	90	156	76	131

Monthly New Commitments



August 2006 DYC Population Report

V. Parole Services

Parole ADP by Region

	<u>August 2006</u>	<u>YTD</u>	<u>Last YTD</u>
Central Region	229.4	225.4	205.7
Northeast Region	136.0	129.7	120.0
Southern Region	93.6	90.5	104.7
Western Region	57.9	56.8	67.3
Parole Total	516.8	502.4	497.7

Parole Intakes

Parole Discharges

Parole LOS

	<u>August 2006</u>	<u>YTD</u>	<u>August 2006</u>	<u>YTD</u>	<u>YTD</u>
Central Region	37	76	35	65	6.4
Northeast Region	27	50	15	34	6.4
Southern Region	25	42	10	25	6.7
Western Region	12	17	8	19	7.1
Missing Region Data	0	0	0	0	
Parole Total	101	185	68	143	6.6

Monthly Parole ADP

