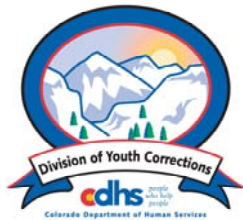


# JULY 2006

## MONTHLY POPULATION REPORT

---

Prepared by the Division of Youth Corrections Research and Evaluation Unit August 17, 2006



**Colorado Department of Human Services**  
**Division of Youth Corrections**

---

Working with Colorado Communities to Achieve Justice

# July 2006

## DYC Population Report

<b>I.</b>	<b>Summary Population Data</b>	<b>1</b>
<b>II.</b>	<b>Detention ADP by Facility</b>	<b>2</b>
<b>III.</b>	<b>Commitment Services</b>	
	A. State and Contract Secure ADP by Facility	3
	B. Community/Other Residential ADP by Facility	4
<b>IV.</b>	<b>New Commitments</b>	<b>5</b>
<b>V.</b>	<b>Parole Services</b>	<b>6</b>

# July 2006 DYC Population Report

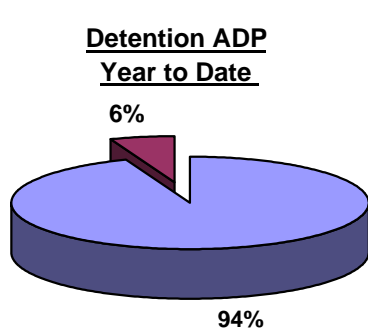
## I. Summary Population Data

<b>DETAINED YOUTH</b>	<b>Average Daily Population (ADP)</b>		<b>Length of Stay (LOS)</b>
	<b>July 2006</b>	<b>YTD</b>	<b>YTD</b>
State-Operated	392.3	392.3	13.9 days
Contracted Staff Secure	23.9	23.9	12.7 days
<b>Total Detained</b>	<b>416.1</b>	<b>416.1</b>	<b>13.8 days</b>

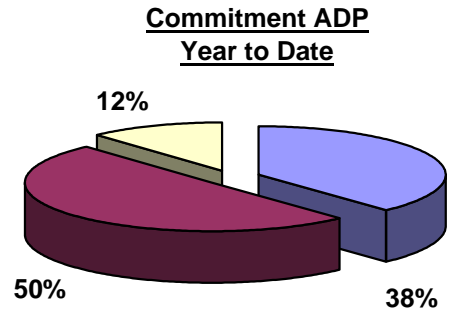
<b>COMMITTED YOUTH</b>	<b>Average Daily Population (ADP)</b>		<b>Length of Stay (LOS)</b>
	<b>July 2006</b>	<b>YTD</b>	<b>YTD</b>
State Secure	546.7	546.7	
Private Secure/Staff Supervised	725.3	725.3	
Community Residential	168.0	168.0	
Other Residential*	13.8	13.8	
<b>Total Committed Residential</b>	<b>1,453.8</b>	<b>1,453.8</b>	<b>17.8 months</b>
<i>Committed Residential w/o Boulder</i>	<i>1,446.2</i>	<i>1,446.2</i>	

<b>PAROLED YOUTH</b>	<b>Average Daily Population (ADP)</b>		<b>Length of Stay (LOS)</b>
	<b>July 2006</b>	<b>YTD</b>	<b>YTD</b>
<b>Total Paroled</b>	<b>490.9</b>	<b>490.9</b>	<b>6.6 months</b>

<b>TOTAL STATEWIDE ADP</b>	<b>2,360.8</b>	<b>2,360.8</b>
----------------------------	----------------	----------------



■ State-Operated  
■ Contracted Staff Secure



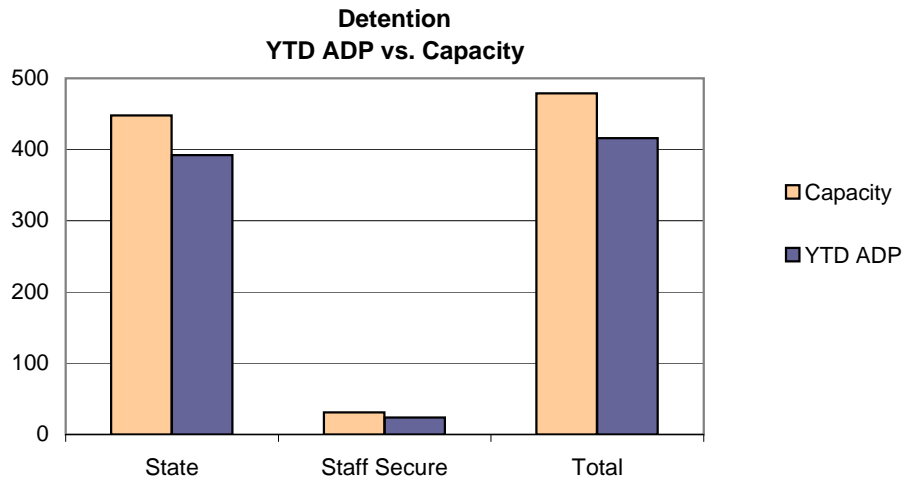
■ State Secure  
■ Private Secure/Staff Supervised  
■ Community Residential

\*Includes Group Homes, Job Corps, Hospitals, Mental Health Institutes, Shelter Care, etc.

# July 2006 DYC Population Report

## II. Detention ADP by Facility

Facility	Average Daily Population			New Admissions		YTD LOS in Days	
	Operating Capacity	July 2006	YTD	YTD % of Capacity	July 2006	YTD	LOS
<i>State Operated Detention</i>							
Adams	29	27.1	27.1	93.4%	52	52	16.2
Gilliam	70	65.3	65.3	93.2%	123	123	16.4
Grand Mesa	24	19.1	19.1	79.7%	48	48	11.7
Marvin Foote	96	87.4	87.4	91.0%	153	153	16.6
Mount View	60	44.7	44.7	74.6%	94	94	16.5
Platte Valley	69	65.6	65.6	95.0%	167	167	10.5
Pueblo	38	34.5	34.5	90.8%	78	78	11.9
Spring Creek	62	48.6	48.6	78.4%	130	130	11.1
<i>State Subtotal</i>	<i>448</i>	<i>392.3</i>	<i>392.3</i>	<i>87.6%</i>	<i>845</i>	<i>845</i>	<i>13.9</i>
<i>Staff Secure Detention</i>							
Brown Center	2	1.9	1.9	96.5%	2	2	13.0
Griffith Center	2	0.3	0.3	16.0%	2	2	4.9
Hilltop Youth Services	3	1.1	1.1	37.0%	2	2	29.9
Midway Remington	9	7.2	7.2	79.6%	17	17	10.5
Prowers	1	0.0	0.0	2.0%	1	1	0.0
Robert DeNier	9	9.0	9.0	100.4%	15	15	12.6
Youthtrack San Luis Valley	5	4.3	4.3	85.4%	12	12	13.9
<i>Staff Secure Total</i>	<i>31</i>	<i>23.9</i>	<i>23.9</i>	<i>76.9%</i>	<i>51</i>	<i>51</i>	<i>12.7</i>
<b>TOTAL</b>	<b>479</b>	<b>416.1</b>	<b>416.1</b>	<b>86.9%</b>	<b>896</b>	<b>896</b>	<b>13.8</b>



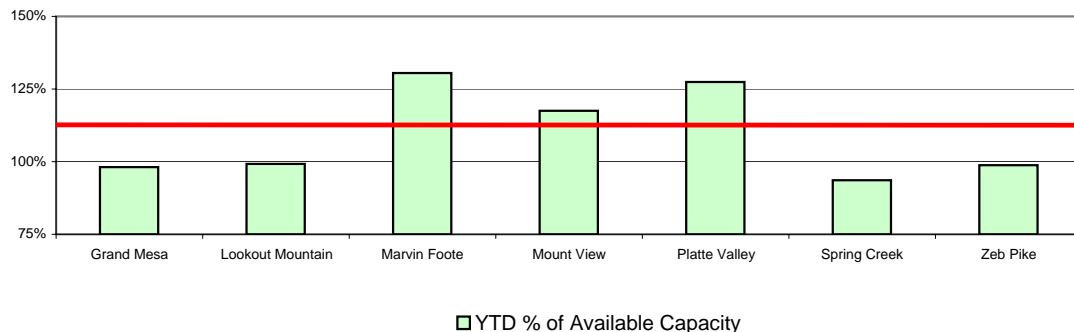
# July 2006 DYC Population Report

## III. Commitment Services

### A. State and Contract Secure ADP by Facility

<u>Facility</u>	<u>Operational Capacity</u>	<u>July 2006</u>	<u>YTD</u>	<u>YTD % of Capacity</u>	<u>YTD % of Available Capacity</u>
<b>State Secure</b>					
Adams	0	0.7	0.7	N/A	N/A
Gilliam	0	4.2	4.2	N/A	N/A
Grand Mesa	44	36.9	36.9	84.0%	84.0%
Lookout	214	209.2	209.2	97.8%	97.8%
Marvin Foote	22	34.5	34.5	156.7%	156.7%
Mount View	73	89.5	89.5	122.7%	122.7%
Platte Valley	66	88.9	88.9	134.6%	134.6%
Pueblo	0	1.6	1.6	N/A	N/A
Spring Creek	44	40.6	40.6	92.3%	92.3%
Zeb Pike	40	40.6	40.6	101.5%	101.5%
<i>State Subtotal</i>	<i>503</i>	<i>546.7</i>	<i>546.7</i>	<i>108.7%</i>	<i>108.7%</i>
<b>Contract Secure/Staff Supervised</b>					
Betty K. Marler Center		38.2	38.2		
Brown Center		1.8	1.8		
Cedar Springs		21.3	21.3		
Childrens Ark		0.3	0.3		
Devereux Cleo Wallace		17.0	17.0		
El Pueblo Ranch		6.9	6.9		
Excelsior Youth Center		1.0	1.0		
Glen Mills Schools		0.1	0.1		
Griffith Center (PRTF)		16.2	16.2		
Griffith Center, Grand Ave.		5.0	5.0		
Griffith Center (TRCCF)		0.0	0.0		
Hilltop Youth Services (RCCF)		9.5	9.5		
Hilltop Youth Services (TRCCF)		5.7	5.7		
Jefferson Hills		49.0	49.0		
Jefferson Hills Aurora		66.5	66.5		
Mountain Star Center		3.0	3.0		
Ridge View		439.3	439.3		
Robert DeNier		15.6	15.6		
Southern Peaks		24.8	24.8		
Turning Point Center		4.0	4.0		
<i>Contract Secure Subtotal</i>		<i>725.3</i>	<i>725.3</i>		

**State Secure Commitment  
Percent of Available Capacity by Facility**



# July 2006

## DYC Population Report

### III. Commitment Services Continued

#### B. Community/Other Residential APD by Facility

<u>Facility</u>	<u>July 2006</u>	<u>YTD</u>
<b>Community</b>		
Alternative Youth Adventures (TRCCF)	20.1	20.1
Alternative Youth Adventures (RCCF)	0.2	0.2
Boulder Community Treatment Center	1.0	1.0
Community Corrections & Work Release	3.0	3.0
Dale House Project	14.3	14.3
Daybreak & Daybreak Princeton	2.3	2.3
Denver Area Youth Services	11.1	11.1
Griffith Centers for Children, Inc.	5.7	5.7
Griffith Centers for Children, Inc.-Chins Up	1.0	1.0
Harmony Host Homes	1.0	1.0
Lost and Found Inc., Independent Living	2.6	2.6
Lost and Found Inc., Morrison	4.1	4.1
Reflections For Youth Inc., Prairie View	1.8	1.8
Sobriety House/Stepping Stone	0.6	0.6
Synergy Administration	7.1	7.1
Third Way Center	5.4	5.4
Third Way Center, Pontiac	9.1	9.1
Third Way Center, York	4.1	4.1
Third Way Center, Lincoln	3.1	3.1
Turning Point Center for Youth & Family	29.7	29.7
Turning Point, Mathews St. (TRCCF)	6.3	6.3
Turning Point, Mathews St. (PRTF)	0.0	0.0
Youthtrack, Jeffco	7.1	7.1
Youthtrack, San Luis Valley	2.1	2.1
Youthtrack, Work and Learn	10.7	10.7
Youth Ventures	14.3	14.3
<i>Community Subtotal</i>	<i>168.0</i>	<i>168.0</i>
<i>Private Contract Total</i>	<i>893.2</i>	<i>893.2</i>
<i>Other Residential*</i>	<i>13.8</i>	<i>13.8</i>
<b>RESIDENTIAL TOTAL</b>	<b>1,453.8</b>	<b>1,453.8</b>

*\*Includes Group Homes, Job Corps, Hospitals, Mental Health Institutes, Shelter Care, etc.*

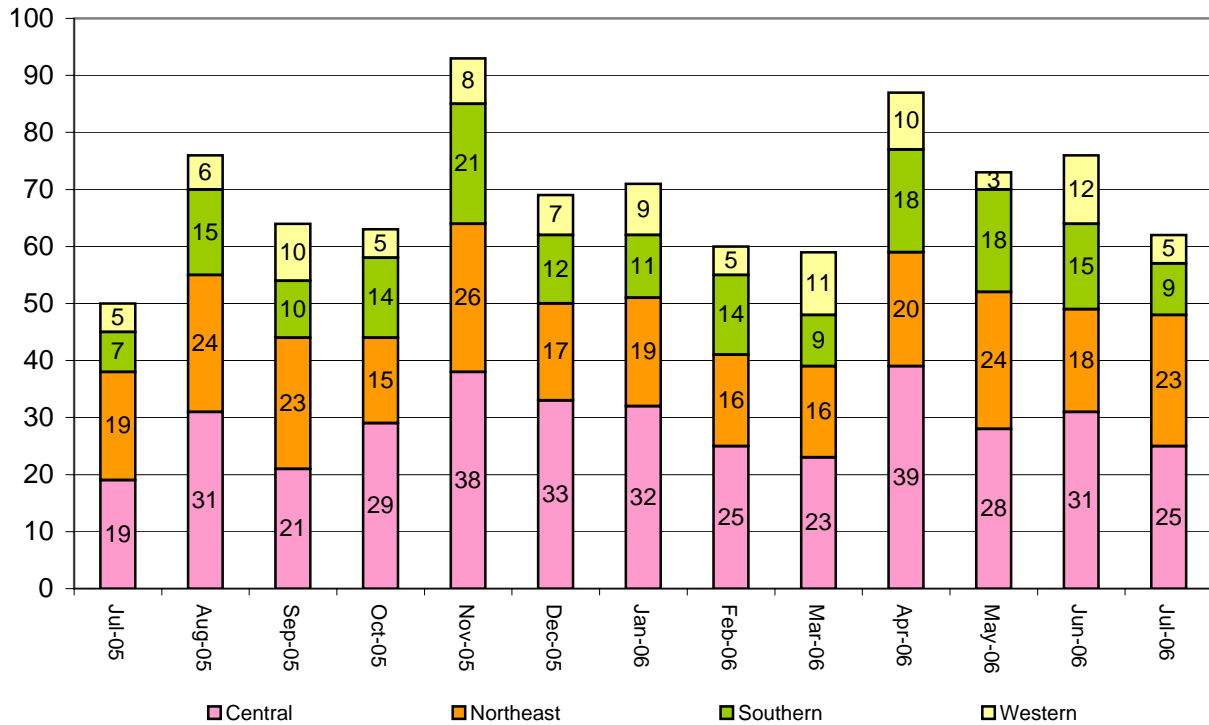
# July 2006 DYC Population Report

## IV. New Commitments

### New Commitments by Region

	<u>July 2006</u>	<u>YTD</u>	<u>July 2005</u>	<u>Last YTD</u>
Central Region	25	25	19	19
Northeast Region	23	23	19	19
Southern Region	9	9	7	7
Western Region	5	5	5	5
<b>New Commitment Total</b>	<b>62</b>	<b>62</b>	<b>50</b>	<b>50</b>

### Monthly New Commitments



# July 2006 DYC Population Report

## V. Parole Services

### Parole ADP by Region

	<u>July 2006</u>	<u>YTD</u>	<u>Last YTD</u>
Central Region	221.4	221.4	209.1
Northeast Region	126.3	126.3	113.8
Southern Region	87.5	87.5	104.2
Western Region	55.8	55.8	66.7
<b>Parole Total</b>	<b>490.9</b>	<b>490.9</b>	<b>493.8</b>

	<b>Parole Intakes</b>		<b>Parole Discharges</b>		<b>Parole LOS</b>
	<u>July 2006</u>	<u>YTD</u>	<u>July 2006</u>	<u>YTD</u>	<u>YTD</u>
Central Region	38	38	29	29	6.0
Northeast Region	23	23	17	17	6.6
Southern Region	17	17	15	15	6.9
Western Region	5	5	11	11	7.6
Missing Region Data	0	0	0	0	
<b>Parole Total</b>	<b>83</b>	<b>83</b>	<b>72</b>	<b>72</b>	<b>6.6</b>

### Monthly Parole ADP

