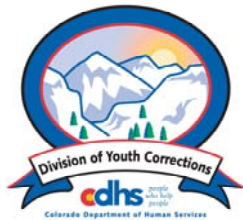


JUNE 2006 MONTHLY POPULATION REPORT

Prepared by the Division of Youth Corrections Research and Evaluation Unit July 19, 2006



Colorado Department of Human Services
Division of Youth Corrections

Working with Colorado Communities to Achieve Justice

June 2006

DYC Population Report

I.	Summary Population Data	1
II.	Detention ADP by Facility	2
III.	Commitment Services	
	A. State and Contract Secure ADP by Facility	3
	B. Community/Other Residential ADP by Facility	4
IV.	New Commitments	5
V.	Parole Services	6

June 2006 DYC Population Report

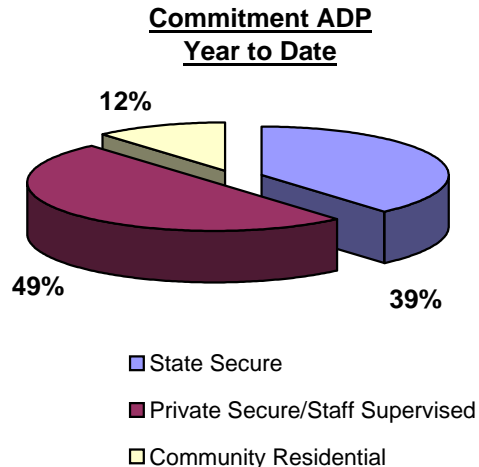
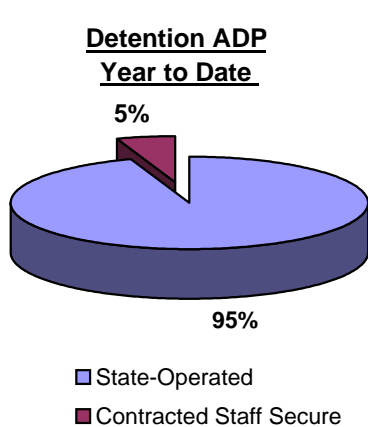
I. Summary Population Data

DETAINED YOUTH	Average Daily Population (ADP)		Length of Stay (LOS)
	June 2006	YTD	YTD
State-Operated	402.1	404.7	14.0 days
Contracted Staff Secure	22.4	22.5	15.6 days
Total Detained	424.6	427.2	14.1 days

COMMITTED YOUTH	Average Daily Population (ADP)		Length of Stay (LOS)
	June 2006	YTD	YTD
State Secure	546.6	552.2	
Private Secure/Staff Supervised	730.9	715.7	
Community Residential	168.9	165.0	
Other Residential*	17.9	19.6	
Total Committed Residential	1,464.3	1,452.5	18.5 months
<i>Committed Residential w/o Boulder</i>	<i>1,457.7</i>	<i>1,445.9</i>	

PAROLED YOUTH	Average Daily Population (ADP)		Length of Stay (LOS)
	June 2006	YTD	YTD
Total Paroled	488.7	507.4	6.6 months

TOTAL STATEWIDE ADP	2,377.5	2,387.1
----------------------------	----------------	----------------

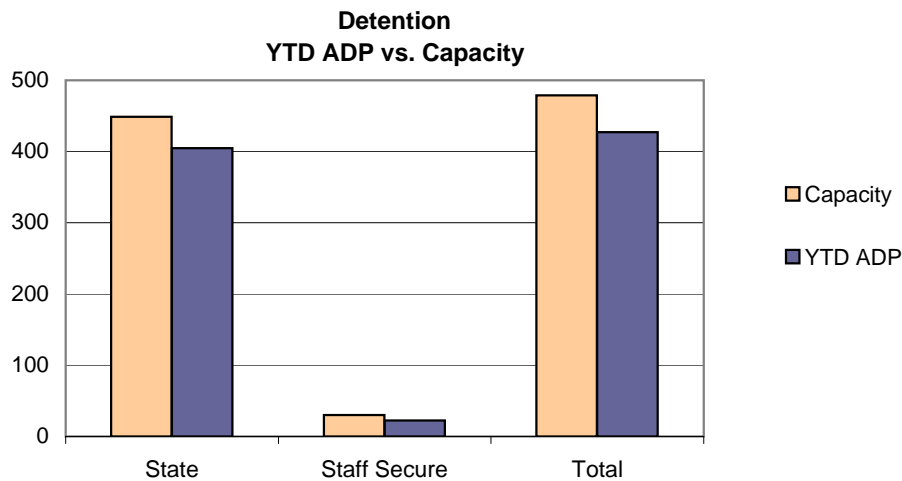


*Includes Group Homes, Job Corps, Hospitals, Mental Health Institutes, Shelter Care, etc.

June 2006 DYC Population Report

II. Detention ADP by Facility

Facility	Average Daily Population			New Admissions		YTD LOS in Days	
	Operating Capacity	June 2006	YTD	YTD % of Capacity	June 2006	YTD	LOS
<i>State Operated Detention</i>							
Adams	28	25.4	24.8	88.6%	64	764	11.4
Gilliam	70	66.9	65.5	93.5%	139	1,563	14.8
Grand Mesa	24	20.2	21.0	87.4%	56	522	13.5
Marvin Foote	96	88.7	87.1	90.7%	161	1,835	16.8
Mount View	60	49.1	52.7	87.9%	78	1,044	17.7
Platte Valley	69	66.2	65.4	94.8%	161	1,911	11.9
Pueblo	36	29.8	30.7	85.1%	64	750	14.8
Spring Creek	66	55.8	57.6	87.2%	138	1,793	11.4
<i>State Subtotal</i>	<i>449</i>	<i>402.1</i>	<i>404.7</i>	<i>90.1%</i>	<i>861</i>	<i>10,182</i>	<i>14.0</i>
<i>Staff Secure Detention</i>							
Brown Center	2	0.5	1.0	49.5%	4	24	16.1
Griffith Center	3	1.1	1.6	52.0%	3	47	11.9
Hilltop Youth Services	3	2.7	2.5	82.0%	4	41	20.6
Midway Remington	9	7.1	6.8	75.3%	27	204	12.1
Prowers	1	0.6	0.8	80.0%	1	10	28.1
Robert DeNier	9	7.6	7.6	84.8%	13	134	20.3
Youthtrack San Luis Valley	3	2.8	2.3	75.7%	2	55	14.0
<i>Staff Secure Total</i>	<i>30</i>	<i>22.4</i>	<i>22.5</i>	<i>75.0%</i>	<i>54</i>	<i>515</i>	<i>15.6</i>
TOTAL	479	424.6	427.2	89.2%	915	10,697	14.1



June 2006 DYC Population Report

III. Commitment Services

A. State and Contract Secure ADP by Facility

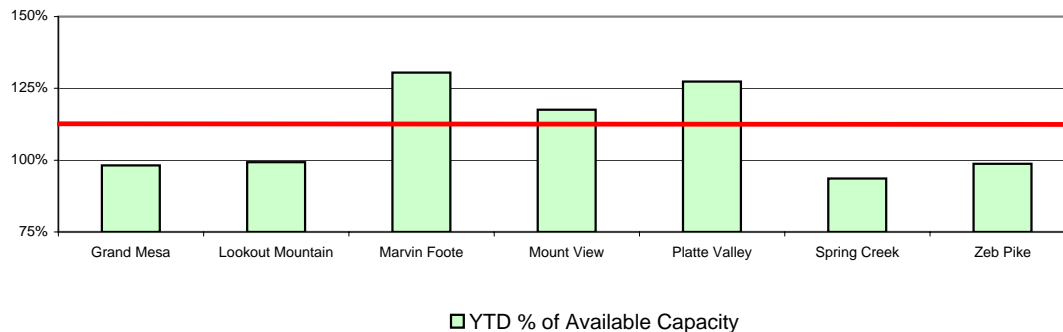
Facility	<u>Operational Capacity</u>	<u>June 2006</u>	<u>YTD</u>	<u>YTD % of Capacity</u>	<u>YTD % of Available Capacity</u>
State Secure					
Adams	0	0.4	0.3	N/A	N/A
Gilliam	0	6.0	3.6	N/A	N/A
Grand Mesa	44	35.2	43.4	98.7%	98.7%
Lookout	214	211.4	213.0	99.5%	99.5%
Marvin Foote	22	24.1	28.2	128.0%	128.0%
Mount View	73	93.0	87.0	119.2%	119.2%
Platte Valley	66	85.3	85.6	129.7%	129.7%
Pueblo	0	1.9	1.8	N/A	N/A
Spring Creek	44	49.4	48.9	111.2%	111.2%
Zeb Pike	40	40.0	40.4	100.9%	100.9%
<i>State Subtotal</i>	<i>503</i>	<i>546.6</i>	<i>552.2</i>	<i>109.8%</i>	<i>109.8%</i>

Contract Secure/Staff Supervised

Betty K. Marler Center		38.7	35.1		
Brown Center		3.1	2.0		
Cedar Springs		20.7	14.9		
Childrens Ark		0.0	0.2		
Devereux Cleo Wallace		15.9	15.9		
El Pueblo Ranch		7.0	8.7		
Excelsior Youth Center		1.4	1.8		
Glen Mills Schools		1.0	1.0		
Griffith Centers for Children*		20.9	18.8		
Hilltop Youth Services*		17.2	17.3		
Jefferson Hills		47.9	44.3		
Jefferson Hills Aurora		67.1	63.5		
Kidz Ark Sterling		2.0	5.0		
Mountain Star Center		3.7	4.8		
Ridge View		436.0	436.4		
Robert DeNier		16.4	10.3		
Southern Peaks*		28.0	28.6		
Turning Point Center		4.0	7.1		
<i>Contract Secure Subtotal</i>		<i>730.9</i>	<i>715.7</i>		

*ADP represents a sum of two program types or locations

**State Secure Commitment
Percent of Available Capacity by Facility**



June 2006

DYC Population Report

III. Commitment Services Continued

B. Community/Other Residential APD by Facility

<u>Facility</u>	<u>June 2006</u>	<u>YTD</u>
Community		
Arapahoe House Inc.	0.0	0.0
Alternative Youth Adventures	22.3	18.9
Boulder Community Treatment Center	1.0	0.5
Boulder County Social Services	0.0	0.5
Community Corrections & Work Release	3.0	3.6
Dale House Project	14.3	11.2
Daybreak Princeton	2.9	6.5
Denver Area Youth Services*	11.9	9.7
Gateway Youth and Family Services	0.0	1.1
Griffith Centers for Children, Inc.	5.6	6.6
Griffith Centers for Children, Inc.-Chins Up	1.0	0.6
Harmony Host Homes	1.0	0.5
Hilltop Youth Services	0.0	1.6
Kidz Ark New Raymer Ranch	0.7	0.3
Longmont Community Treatment Center	0.0	0.4
Lost and Found Inc., Independent Living	2.0	0.9
Lost and Found Inc.	0.0	1.0
Lost and Found Inc., Morrison	3.1	2.4
Lutheran Family Services of Colo	0.0	0.2
Lyle Alzado Youth Home	0.0	1.9
Miranda Place	0.0	0.8
Reflections For Youth Inc., Prairie View	2.0	1.9
Restitution Center	0.0	0.2
ROP-Canyon State Academy	0.0	1.4
Synergy Administration	8.6	6.3
Third Way Center	5.6	4.6
Third Way Center, Pontiac	7.7	6.0
Third Way Center, York	3.2	2.9
Third Way Center, Lincoln	4.0	4.5
Turning Point	0.9	0.7
Turning Point Center for Youth & Family	27.9	22.2
Turning Point, Mathews Street	6.3	8.5
Youthtrack, Excel	0.0	8.0
Youthtrack, Jeffco	8.9	7.5
Youthtrack, San Luis Valley	2.0	3.3
Youthtrack, Work and Learn	10.8	8.8
Youth Ventures*	12.4	9.3
<i>Community Subtotal</i>	<i>168.9</i>	<i>165.0</i>
<i>Private Contract Total</i>	<i>899.8</i>	<i>880.7</i>
<i>Other Residential**</i>	<i>17.9</i>	<i>19.6</i>
RESIDENTIAL TOTAL	1,464.3	1,452.5

*ADP is a sum of two or more program types or locations

**Includes Group Homes, Job Corps, Hospitals, Mental Health Institutes, Shelter Care, etc.

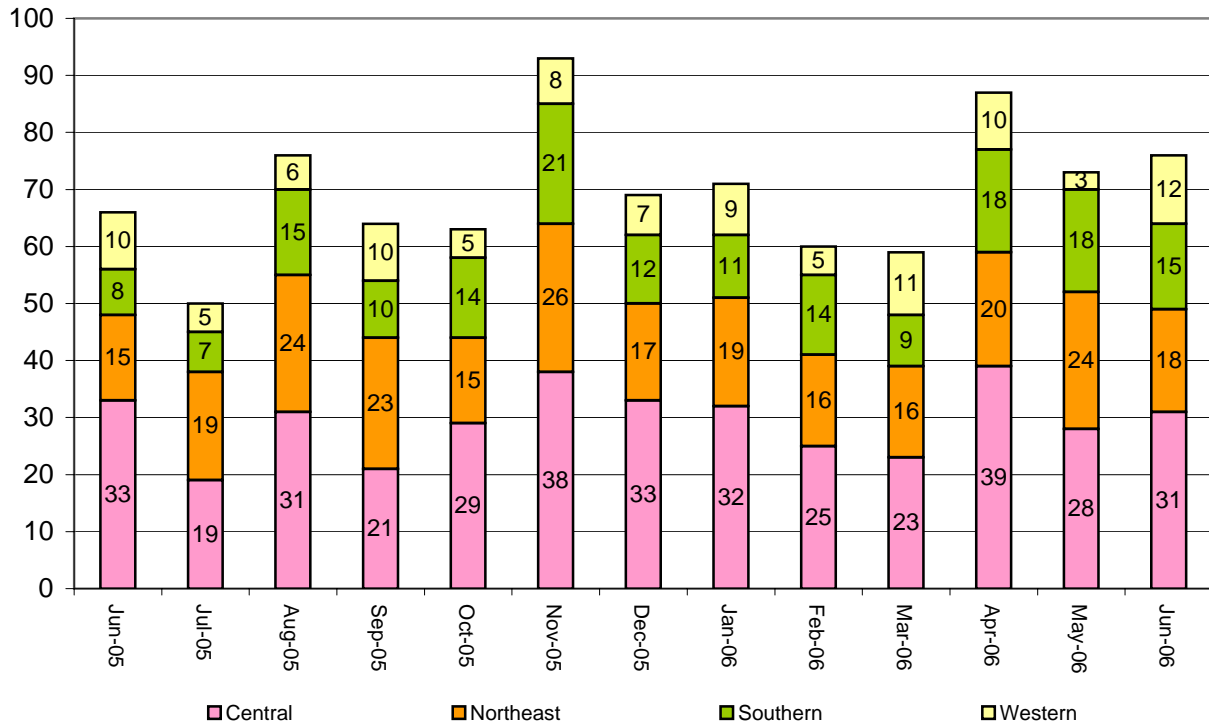
June 2006 DYC Population Report

IV. New Commitments

New Commitments by Region

	<u>June 2006</u>	<u>YTD</u>	<u>June 2005</u>	<u>Last YTD</u>
Central Region	31	398	33	391
Northeast Region	18	259	15	253
Southern Region	15	172	8	166
Western Region	12	91	10	131
New Commitment Total	76	920	66	941

Monthly New Commitments



June 2006 DYC Population Report

V. Parole Services

Parole ADP by Region

	<u>June 2006</u>	<u>YTD</u>	<u>Last YTD</u>
Central Region	212.4	208.9	202.1
Northeast Region	127.5	128.6	116.1
Southern Region	89.5	100.0	98.3
Western Region	59.3	69.9	71.4
Parole Total	488.7	507.4	487.9

Parole Intakes Parole Discharges Parole LOS

	<u>Parole Intakes</u>		<u>Parole Discharges</u>		<u>Parole LOS</u>
	<u>June 2006</u>	<u>YTD</u>	<u>June 2006</u>	<u>YTD</u>	<u>YTD</u>
Central Region	43	415	32	374	6.4
Northeast Region	17	237	19	207	6.6
Southern Region	13	180	16	175	6.8
Western Region	11	114	8	113	7.0
Missing Region Data	2	12	0	0	
Parole Total	86	958	75	869	6.6

Monthly Parole ADP

