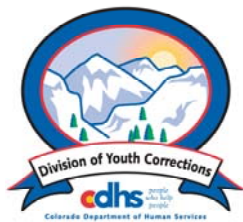


# MAY 2006

## MONTHLY POPULATION REPORT

---

Prepared by the Division of Youth Corrections Research and Evaluation Unit June 20, 2006



**Colorado Department of Human Services**  
**Division of Youth Corrections**

---

Working with Colorado Communities to Achieve Justice

# May 2006

## DYC Population Report

<b>I.</b>	<b>Summary Population Data</b>	<b>1</b>
<b>II.</b>	<b>Detention ADP by Facility</b>	<b>2</b>
<b>III.</b>	<b>Commitment Services</b>	
	A. State and Contract Secure ADP by Facility	<b>3</b>
	B. Community/Other Residential ADP by Facility	<b>4</b>
<b>IV.</b>	<b>New Commitments</b>	<b>5</b>
<b>V.</b>	<b>Parole Services</b>	<b>6</b>

# May 2006 DYC Population Report

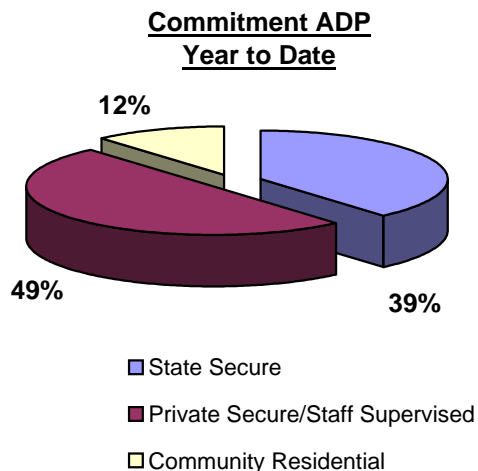
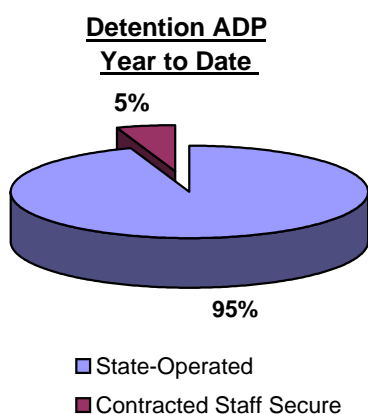
## I. Summary Population Data

<b>DETAINED YOUTH</b>	<b>Average Daily Population (ADP)</b>		<b>Length of Stay (LOS)</b>
	<b>May 2006</b>	<b>YTD</b>	<b>YTD</b>
State-Operated	408.6	402.8	14.0 days
Contracted Staff Secure	21.6	22.6	15.8 days
<b>Total Detained</b>	<b>430.3</b>	<b>425.5</b>	<b>14.0 days</b>

<b>COMMITTED YOUTH</b>	<b>Average Daily Population (ADP)</b>		<b>Length of Stay (LOS)</b>
	<b>May 2006</b>	<b>YTD</b>	<b>YTD</b>
State Secure	554.3	551.5	
Private Secure/Staff Supervised	731.8	714.4	
Community Residential	158.2	164.7	
Other Residential*	21.8	19.8	
<b>Total Committed Residential</b>	<b>1,466.1</b>	<b>1,450.4</b>	<b>18.5 months</b>
<i>Committed Residential w/o Boulder</i>	<i>1,461.7</i>	<i>1,443.8</i>	

<b>PAROLED YOUTH</b>	<b>Average Daily Population (ADP)</b>		<b>Length of Stay (LOS)</b>
	<b>May 2006</b>	<b>YTD</b>	<b>YTD</b>
<b>Total Paroled</b>	<b>485.4</b>	<b>507.6</b>	<b>6.6 months</b>

<b>TOTAL STATEWIDE ADP</b>	<b>2,381.7</b>	<b>2,383.4</b>
----------------------------	----------------	----------------

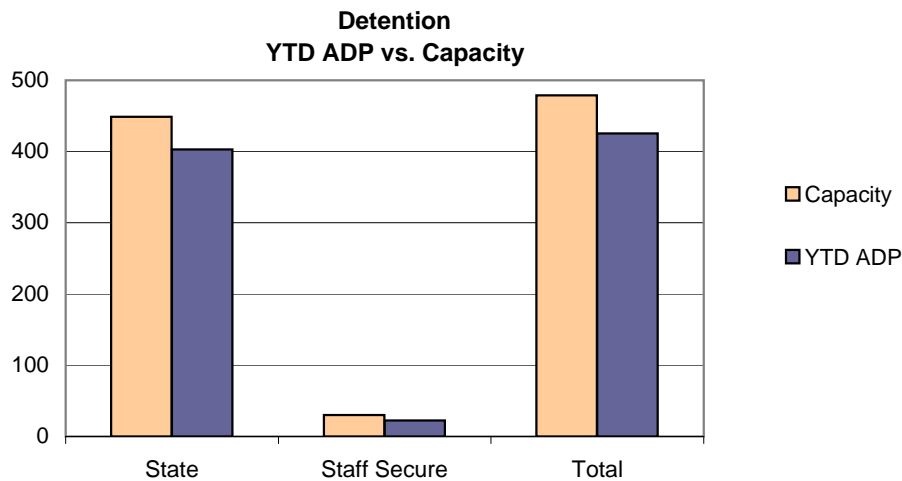


\*Other Residential Includes Group Homes, Job Corps, etc.

# May 2006 DYC Population Report

## II. Detention ADP by Facility

Facility	Operating Capacity	Average Daily Population		YTD % of Capacity	New Admissions		YTD LOS in Days
		May 2006	YTD		May 2006	YTD	
<i>State Operated Detention</i>							
Adams YSC	28	26.0	24.6	87.8%	93	700	11.4
Gilliam	70	68.9	65.0	92.9%	148	1,424	14.8
Grand Mesa	24	17.5	21.1	87.9%	48	467	13.8
Marvin Foote	96	91.0	87.0	90.7%	166	1,675	16.7
Mount View	60	53.7	53.0	88.4%	109	968	17.5
Platte Valley	69	63.4	64.0	92.7%	189	1,750	12.0
Pueblo	36	28.2	30.9	85.8%	73	686	14.8
Spring Creek	66	60.0	57.2	86.7%	160	1,654	11.2
<i>State Subtotal</i>	<i>449</i>	<i>408.6</i>	<i>402.8</i>	<i>89.7%</i>	<i>986</i>	<i>9,324</i>	<i>14.0</i>
<i>Staff Secure Detention</i>							
Brown Center	2	1.0	1.1	54.0%	2	20	17.5
Emily Griffith	3	0.5	1.6	53.0%	3	44	12.2
Hilltop West	3	1.0	2.4	80.7%	1	37	21.5
Midway Remington	9	7.7	6.7	74.7%	22	177	12.5
Prowers	1	1.1	0.8	81.0%	1	9	30.1
Robert DeNier	9	8.8	7.8	86.2%	17	122	19.8
Youthtrack San Luis Valley	3	1.5	2.2	74.7%	8	53	14.0
<i>Staff Secure Total</i>	<i>30</i>	<i>21.6</i>	<i>22.6</i>	<i>75.4%</i>	<i>54</i>	<i>462</i>	<i>15.8</i>
<b>TOTAL</b>	<b>479</b>	<b>430.3</b>	<b>425.5</b>	<b>88.8%</b>	<b>1,040</b>	<b>9,786</b>	<b>14.0</b>



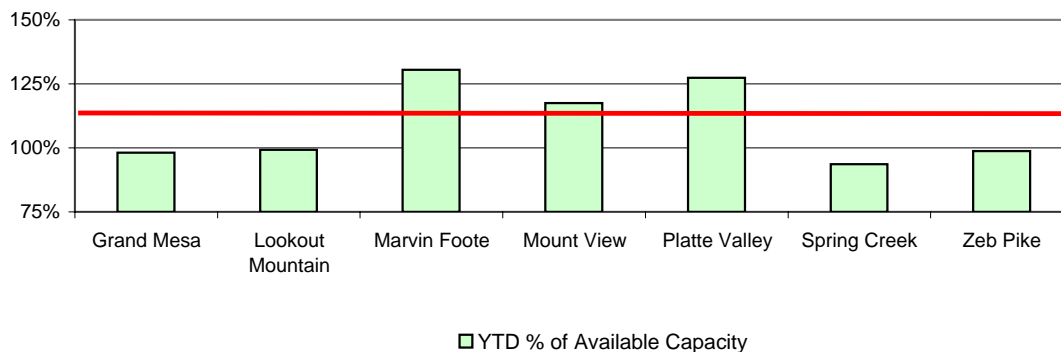
# May 2006 DYC Population Report

## III. Commitment Services

### A. State and Contract Secure ADP by Facility

Facility	<u>Operational Capacity</u>	<u>May 2006</u>	<u>YTD</u>	<u>YTD % of Capacity</u>	<u>YTD % of Available Capacity</u>
<b>State Secure</b>					
Adams	0	0.2	0.3	N/A	N/A
Gilliam	0	1.9	3.4	N/A	N/A
Grand Mesa	44	42.1	44.2	100.4%	100.4%
Lookout	214	212.5	212.2	99.1%	99.1%
Marvin Foote	22	28.4	28.5	129.6%	129.6%
Mount View	73	87.5	86.3	118.2%	118.2%
Platte Valley	66	88.9	85.5	129.6%	129.6%
Pueblo	0	1.2	1.9	N/A	N/A
Spring Creek	44	51.8	48.9	111.1%	111.1%
Zeb Pike	40	39.9	40.4	101.0%	101.0%
<i>State Subtotal</i>	<i>503</i>	<i>554.3</i>	<i>551.5</i>	<i>109.6%</i>	<i>109.6%</i>
<b>Contract Secure/Staff Supervised</b>					
Betty K. Marler Cntr.		39.0	34.7		
Brown Center		2.0	1.9		
Cedar Springs		16.9	14.4		
Childrens Ark		0.0	0.2		
Devereux Cleo Wallace		17.0	15.9		
El Pueblo Ranch		7.2	8.8		
Excelsior Youth Center		2.0	1.9		
Glen Mills Schools		1.0	1.0		
Griffith Centers for Children		19.1	18.7		
Hilltop Youth Services		14.4	17.2		
Jefferson Hills		44.3	44.0		
Jefferson Hills Aurora		66.8	63.3		
Kidz Ark		2.0	5.3		
Mountain Star Center		4.6	4.8		
Ridge View		443.2	436.5		
Robert DeNier		17.3	9.8		
Southern Peaks		30.5	28.7		
Turning Point Center		4.6	7.4		
<i>Contract Secure Subtotal</i>		<i>731.8</i>	<i>714.4</i>		

**State Secure Commitment  
Percent of Available Capacity by Facility**



# May 2006

## DYC Population Report

### III. Commitment Services Continued

#### B. Community/Other Residential APD by Facility

<u>Facility</u>	<u>May 2006</u>	<u>YTD</u>
<b>Community</b>		
Arapahoe House Inc.	0.0	0.0
AYA Montrose	23.2	18.6
Boulder Community Treatment Center	0.0	0.4
Boulder County Social Services	0.0	0.6
Community Corrections & Work Release	3.9	3.7
Dale House	13.5	11.0
Daybreak Princeton	6.0	6.8
DAYS	8.1	9.4
Gateway	0.0	1.1
Griffith Centers for Children	7.3	7.3
Harmony Host Homes	1.9	0.4
Hilltop Youth Services	0.0	1.7
Kidz Ark New Raymer Ranch	1.0	0.2
Longmont Center	0.0	0.5
Lost and Found	2.2	4.2
Lutheran Family Services of Colo	0.0	0.2
Lyle Alzado Youth Home/PYSB Proctor	0.0	2.1
Miranda Place	0.0	0.9
Prairie View	1.8	1.9
Restitution Center	0.0	0.2
ROP	0.0	1.5
Synergy	6.2	6.1
Third Way	20.4	17.9
Turning Point	1.0	0.6
Turning Point Center for Youth & Family	21.7	21.6
Turning Point Mathews St	7.4	8.8
Youthtrack-Excel	0.0	8.7
Youthtrack-Jeffco	8.9	7.4
Youthtrack-San Luis Valley	2.8	3.4
Youthtrack-Work and Learn	9.5	8.7
Youth Ventures	11.4	9.1
<i>Community Subtotal</i>	<i>158.2</i>	<i>164.7</i>
<i>Private Contract Total</i>	<i>890.0</i>	<i>879.1</i>
<i>Other Residential*</i>	<i>21.8</i>	<i>19.8</i>
<b>RESIDENTIAL TOTAL</b>	<b>1,466.1</b>	<b>1,450.4</b>

\*Includes Group Homes, Job Corps, etc.

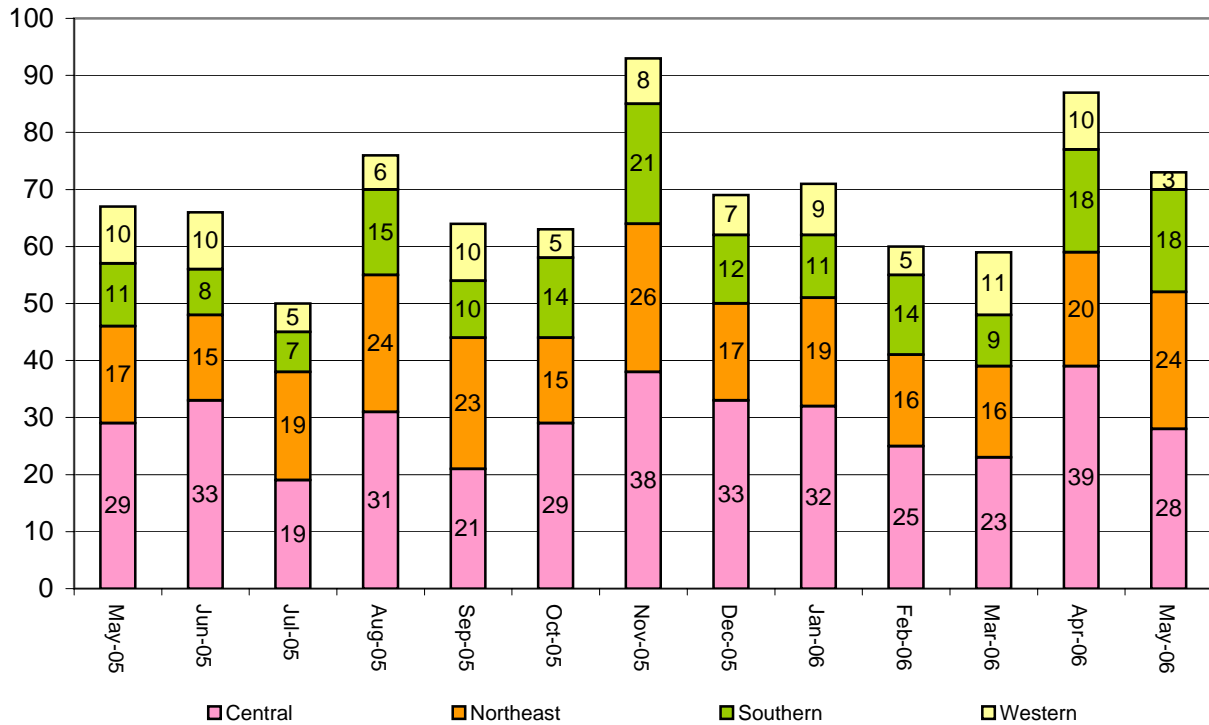
# May 2006 DYC Population Report

## IV. New Commitments

### New Commitments by Region

	<u>May 2006</u>	<u>YTD</u>	<u>May 2005</u>	<u>Last YTD</u>
Central Region	28	360	29	355
Northeast Region	24	235	17	233
Southern Region	18	157	11	155
Western Region	3	79	10	122
<b>New Commitment Total</b>	<b>73</b>	<b>831</b>	<b>67</b>	<b>865</b>

### Monthly New Commitments



# May 2006 DYC Population Report

## V. Parole Services

**Parole ADP by Region**

	<u>May 2006</u>	<u>YTD</u>	<u>Last YTD</u>
Central Region	205.5	208.2	203.9
Northeast Region	131.1	128.7	115.1
Southern Region	92.1	100.2	96.8
Western Region	56.6	70.4	72.6
<b>Parole Total</b>	<b>485.4</b>	<b>507.6</b>	<b>488.4</b>

	<b>Parole Intakes</b>		<b>Parole Discharges</b>		<b>Parole LOS</b>
	<u>May 2006</u>	<u>YTD</u>	<u>May 2006</u>	<u>YTD</u>	<u>YTD</u>
Central Region	38	372	33	338	6.4
Northeast Region	23	220	14	188	6.7
Southern Region	14	165	13	158	6.7
Western Region	7	103	2	102	7.1
Missing Region Data	1	10	0	0	
<b>Parole Total</b>	<b>83</b>	<b>870</b>	<b>62</b>	<b>786</b>	<b>6.6</b>

**Monthly Parole ADP**

