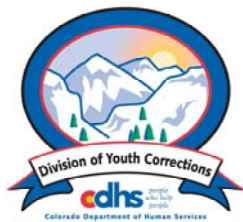


APRIL 2006 MONTHLY POPULATION REPORT

Prepared by the Division of Youth Corrections Research and Evaluation Unit May 16, 2006



Colorado Department of Human Services
Division of Youth Corrections

Working with Colorado Communities to Achieve Justice

April 2006

DYC Population Report

I.	Summary Population Data	1
II.	Detention ADP by Facility	2
III.	Commitment Services	
	A. State and Contract Secure ADP by Facility	3
	B. Community/Other Residential ADP by Facility	4
IV.	New Commitments	5
V.	Parole Services	6

April 2006 DYC Population Report

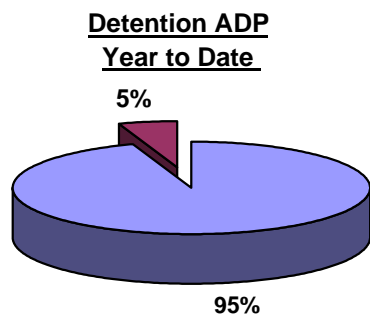
I. Summary Population Data

DETAINED YOUTH	Average Daily Population (ADP)		Length of Stay (LOS)
	April 2006	YTD	YTD
State-Operated	408.5	401.5	14.0 days
Contracted Staff Secure	19.9	22.7	16.4 days
Total Detained	428.3	424.3	14.1 days

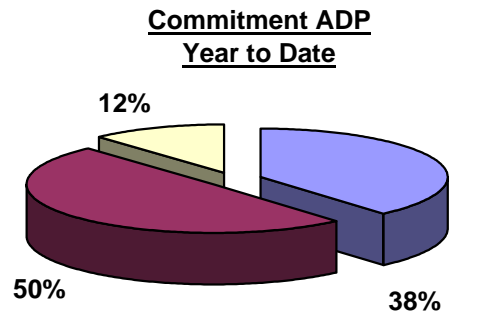
COMMITTED YOUTH	Average Daily Population (ADP)		Length of Stay (LOS)
	April 2006	YTD	YTD
State Secure	553.1	551.3	
Private Secure/Staff Supervised	719.8	713.0	
Community Residential	169.1	168.5	
Other Residential*	18.4	17.2	
Total Committed Residential	1,460.3	1,449.9	18.5 months
<i>Committed Residential w/o Boulder</i>	<i>1,455.3</i>	<i>1,443.1</i>	

PAROLED YOUTH	Average Daily Population (ADP)		Length of Stay (LOS)
	April 2006	YTD	YTD
Total Paroled	486.4	509.3	6.6 months

TOTAL STATEWIDE ADP	2,375.1	2,383.5
----------------------------	----------------	----------------



■ State-Operated
■ Contracted Staff Secure



■ State Secure
■ Private Secure/Staff Supervised
■ Community Residential

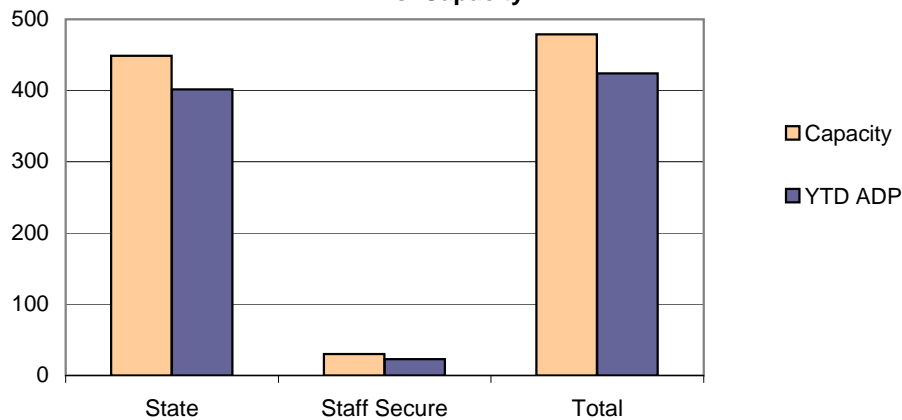
*Other Residential Includes Group Homes, Job Corps, etc.

April 2006 DYC Population Report

II. Detention ADP by Facility

Facility	Operating Capacity	Average Daily Population			New Admissions		YTD LOS in Days
		April 2006	YTD	YTD % of Capacity	April 2006	YTD	
<i>State Operated Detention</i>							
Adams YSC	28	26.1	24.4	87.3%	59	607	11.8
Gilliam	70	65.6	64.8	92.6%	127	1,277	14.6
Grand Mesa	24	19.9	21.4	89.3%	34	419	14.0
Marvin Foote	96	88.4	86.6	90.2%	148	1,509	16.7
Mount View	60	55.2	52.9	88.1%	97	859	18.0
Platte Valley	69	63.4	63.9	92.6%	163	1,560	12.0
Pueblo	36	29.3	30.8	85.7%	67	613	15.1
Spring Creek	66	60.5	56.7	85.8%	169	1,494	11.1
<i>State Subtotal</i>	<i>449</i>	<i>408.5</i>	<i>401.5</i>	<i>89.4%</i>	<i>864</i>	<i>8,338</i>	<i>14.0</i>
<i>Staff Secure Detention</i>							
Brown Center	2	1.2	1.1	54.0%	2	18	17.7
Emily Griffith	3	1.4	1.7	58.0%	4	41	12.9
Hilltop West	3	1.0	2.6	85.7%	4	36	21.5
Midway Remington	9	6.0	6.7	74.1%	15	154	12.5
Prowers	1	0.0	0.8	75.0%	0	7	30.8
Robert DeNier	9	8.5	7.6	84.8%	9	104	21.0
Youthtrack San Luis Valley	3	1.7	2.3	76.7%	5	45	15.2
<i>Staff Secure Total</i>	<i>30</i>	<i>19.9</i>	<i>22.7</i>	<i>75.8%</i>	<i>39</i>	<i>405</i>	<i>16.4</i>
TOTAL	479	428.3	424.3	88.6%	903	8,743	14.1

**Detention
YTD ADP vs. Capacity**



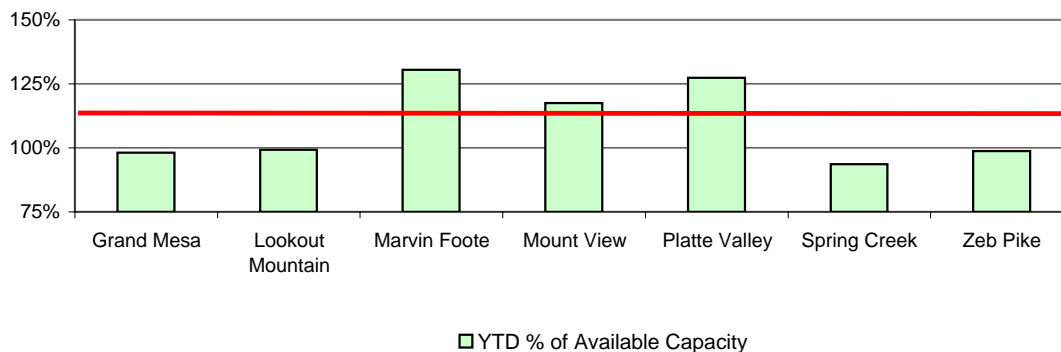
April 2006 DYC Population Report

III. Commitment Services

A. State and Contract Secure ADP by Facility

Facility	<u>Operational Capacity</u>	<u>April 2006</u>	<u>YTD</u>	<u>YTD % of Capacity</u>	<u>YTD % of Available Capacity</u>
State Secure					
Adams	0	0.5	0.4	N/A	N/A
Gilliam	0	4.1	3.4	N/A	N/A
Grand Mesa	44	47.4	44.4	100.8%	100.8%
Lookout	214	213.5	212.1	99.1%	99.1%
Marvin Foote	22	28.2	28.5	129.5%	129.5%
Mount View	73	85.1	86.2	118.1%	118.1%
Platte Valley	66	82.9	85.3	129.2%	129.2%
Pueblo	0	0.5	2.0	N/A	N/A
Spring Creek	44	49.1	48.6	110.4%	110.4%
Zeb Pike	40	41.8	40.5	101.2%	101.2%
<i>State Subtotal</i>	<i>503</i>	<i>553.1</i>	<i>551.3</i>	<i>109.6%</i>	<i>109.6%</i>
Contract Secure/Staff Supervised					
Betty K. Marler Cntr.		38.1	34.3		
Brown Center		2.0	1.9		
Cedar Springs		19.3	14.2		
Childrens Ark		0.0	0.2		
Devereux Cleo Wallace		17.4	15.7		
El Pueblo Ranch		6.0	9.0		
Excelsior Youth Center		2.0	1.9		
Glen Mills Schools		1.0	1.0		
Griffith Centers for Children		17.7	19.5		
Hilltop Youth Services		16.3	17.5		
Jefferson Hills		44.2	43.8		
Jefferson Hills Aurora		67.1	62.9		
Kidz Ark		4.0	5.7		
Mountain Star Center		5.8	4.9		
Ridge View		429.0	435.8		
Robert DeNier		15.7	8.8		
Southern Peaks		28.1	28.5		
Turning Point Center		6.2	7.6		
<i>Contract Secure Subtotal</i>		<i>719.8</i>	<i>713.0</i>		

**State Secure Commitment
Percent of Available Capacity by Facility**



April 2006

DYC Population Report

III. Commitment Services Continued

B. Community/Other Residential APD by Facility

<u>Facility</u>	<u>April 2006</u>	<u>YTD</u>
Community		
Arapahoe House Inc.	0.3	0.0
AYA Montrose	24.2	18.1
Boulder Community Treatment Center	0.0	0.4
Boulder County Social Services	0.2	0.6
Community Corrections & Work Release	3.0	3.6
Dale House	11.2	10.7
Daybreak Princeton	6.9	6.9
DAYS	9.3	9.6
Gateway	0.4	1.3
Griffith Centers for Children	13.4	10.1
Harmony Host Homes	1.5	0.3
Hilltop Youth Services	0.0	1.9
Kidz Ark New Raymer Ranch	1.0	0.1
Longmont Center	0.0	0.5
Lost and Found	1.0	4.4
Lutheran Family Services of Colo	1.0	0.2
Lyle Alzado Youth Home/PYSB Proctor	0.0	2.3
Miranda Place	0.0	1.0
Prairie View	1.9	1.9
Restitution Center	0.0	0.2
ROP	0.0	1.6
Synergy	6.6	6.1
Third Way	19.1	18.0
Turning Point	1.0	0.6
Turning Point Center for Youth & Family	23.7	21.6
Turning Point Mathews St	10.4	9.0
Youthtrack-Excel	0.0	9.6
Youthtrack-Jeffco	10.5	7.2
Youthtrack-San Luis Valley	3.6	3.4
Youthtrack-Work and Learn	9.7	8.6
Youth Ventures	9.5	8.8
<i>Community Subtotal</i>	<i>169.1</i>	<i>168.5</i>
<i>Private Contract Total</i>	<i>888.9</i>	<i>881.5</i>
<i>Other Residential*</i>	<i>18.4</i>	<i>17.2</i>
RESIDENTIAL TOTAL	1,460.3	1,449.9

*Includes Group Homes, Job Corps, etc.

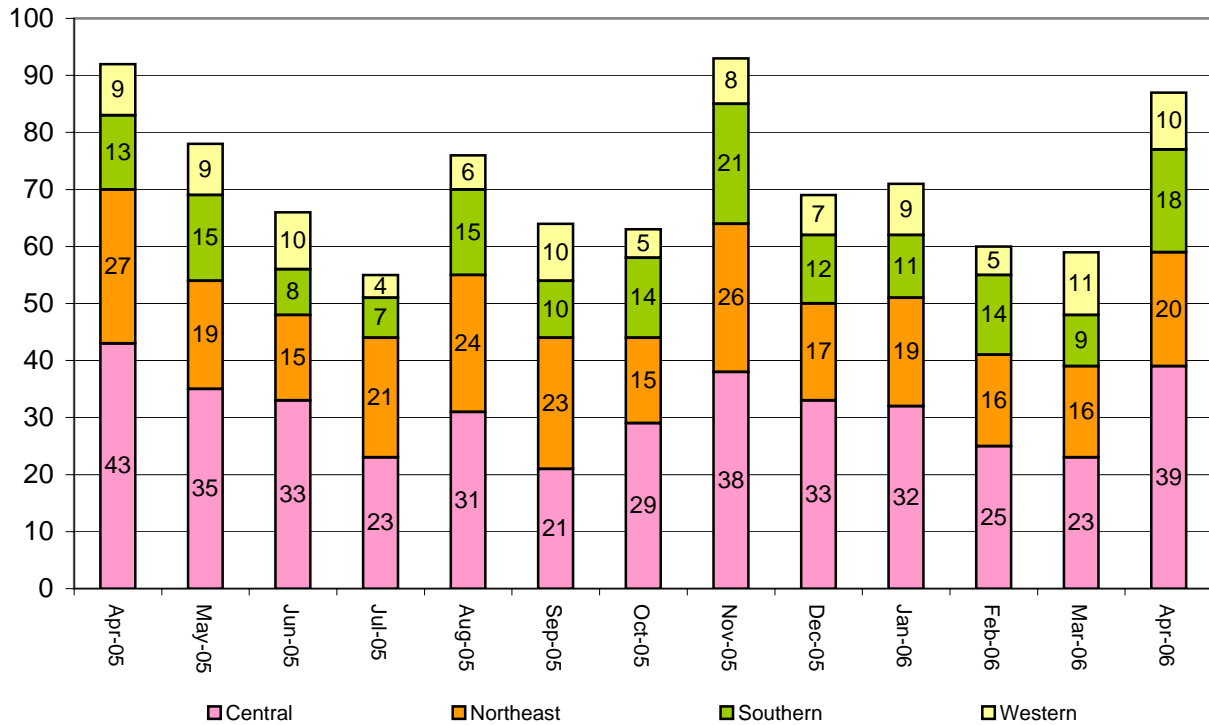
April 2006 DYC Population Report

IV. New Commitments

New Commitments by Region

	<u>April 2006</u>	<u>YTD</u>	<u>April 2005</u>	<u>Last YTD</u>
Central Region	39	328	44	326
Northeast Region	20	212	25	214
Southern Region	18	139	12	143
Western Region	10	76	9	112
New Commitment Total	87	755	90	795

Monthly New Commitments



April 2006 DYC Population Report

V. Parole Services

Parole ADP by Region

	<u>April 2006</u>	<u>YTD</u>	<u>Last YTD</u>
Central Region	200.7	208.0	203.7
Northeast Region	132.6	128.6	114.7
Southern Region	95.5	101.8	95.8
Western Region	57.7	71.0	73.0
Parole Total	486.4	509.3	487.2

	Parole Intakes		Parole Discharges		Parole LOS
	<u>April 2006</u>	<u>YTD</u>	<u>April 2006</u>	<u>YTD</u>	<u>YTD</u>
Central Region	32	333	22	304	6.3
Northeast Region	18	197	16	175	6.7
Southern Region	14	152	7	142	6.7
Western Region	7	95	10	99	7.2
Missing Region Data	1	9	0	0	
Parole Total	72	786	55	720	6.6

Monthly Parole ADP

