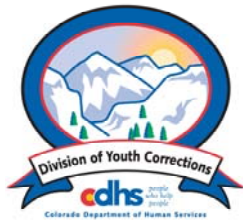


MARCH 2006 MONTHLY POPULATION REPORT

Prepared by the Division of Youth Corrections Research and Evaluation Unit April 18, 2006



Colorado Department of Human Services
Division of Youth Corrections

Working with Colorado Communities to Achieve Justice

March 2006

DYC Population Report

I.	Summary Population Data	1
II.	Detention ADP by Facility	2
III.	Commitment Services	
	A. State and Contract Secure ADP by Facility	3
	B. Community/Other Residential ADP by Facility	4
IV.	New Commitments	5
V.	Parole Services	6

March 2006 DYC Population Report

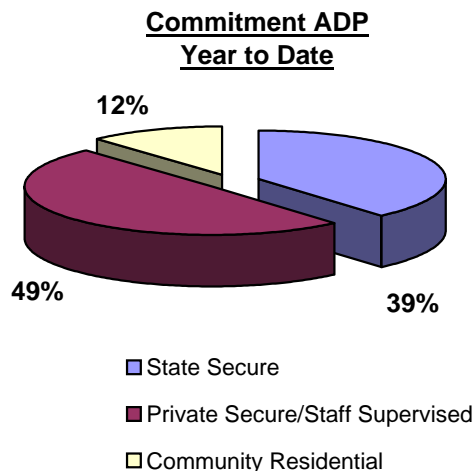
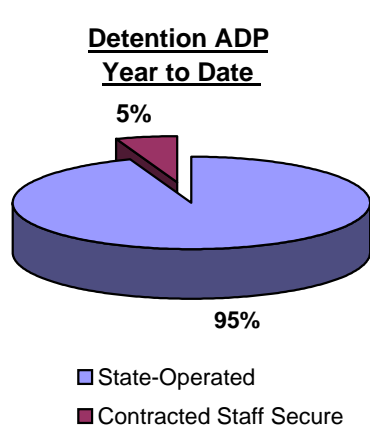
I. Summary Population Data

DETAINED YOUTH	Average Daily Population (ADP)		Length of Stay (LOS)
	March 2006	YTD	YTD
State-Operated	401.1	399.7	14.0 days
Contracted Staff Secure	23.3	23.0	16.4 days
Total Detained	424.3	422.7	14.1 days

COMMITTED YOUTH	Average Daily Population (ADP)		Length of Stay (LOS)
	March 2006	YTD	YTD
State Secure	554.6	550.9	
Private Secure/Staff Supervised	723.4	710.2	
Community Residential	167.0	168.8	
Other Residential*	21.8	19.2	
Total Committed Residential	1,466.7	1,449.1	18.6 months
<i>Committed Residential w/o Boulder</i>	<i>1,457.7</i>	<i>1,442.0</i>	

PAROLED YOUTH	Average Daily Population (ADP)		Length of Stay (LOS)
	March 2006	YTD	YTD
Total Paroled	487.3	510.4	6.7 months

TOTAL STATEWIDE ADP	2,378.3	2,382.2	
----------------------------	----------------	----------------	--

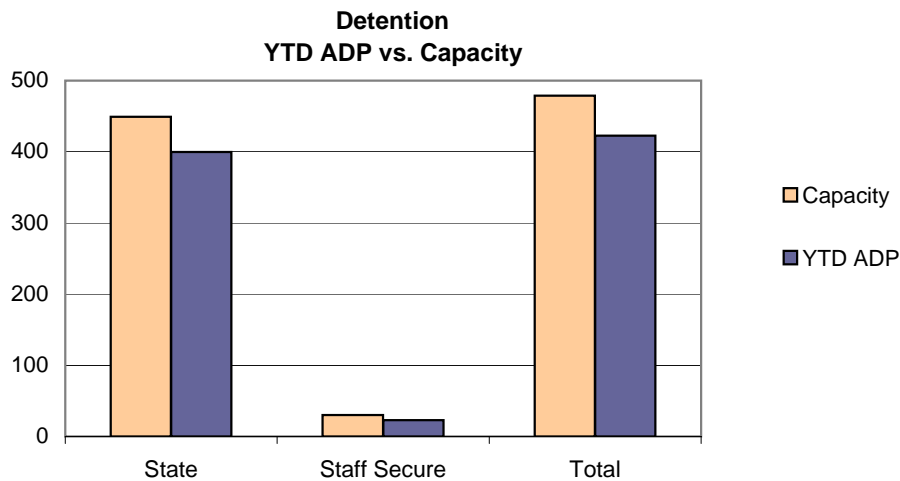


*Other Residential Includes Group Homes, Job Corps, etc.

March 2006 DYC Population Report

II. Detention ADP by Facility

Facility	Average Daily Population			New Admissions		YTD LOS in Days	
	Operating Capacity	March 2006	YTD	YTD % of Capacity	March 2006	YTD	LOS
<i>State Operated Detention</i>							
Adams YSC	28	25.1	24.3	86.9%	77	548	11.6
Gilliam	70	63.6	64.3	91.9%	132	1,150	14.5
Grand Mesa	24	19.1	21.4	89.1%	37	386	13.8
Marvin Foote	96	88.5	86.1	89.7%	156	1,362	16.6
Mount View	60	49.7	52.5	87.4%	104	762	17.8
Platte Valley	69	62.0	63.7	92.3%	143	1,397	12.1
Pueblo	36	32.8	31.1	86.3%	60	546	14.8
Spring Creek	66	60.3	56.4	85.4%	160	1,326	11.1
<i>State Subtotal</i>	<i>449</i>	<i>401.1</i>	<i>399.7</i>	<i>89.0%</i>	<i>869</i>	<i>7,477</i>	<i>14.0</i>
<i>Staff Secure Detention</i>							
Brown Center	2	1.9	1.1	53.5%	1	16	15.5
Emily Griffith	3	1.0	1.8	59.3%	4	37	13.2
Hilltop West	3	2.0	2.7	90.0%	4	32	23.6
Midway Remington	9	6.5	6.7	74.7%	16	139	12.9
Prowers	1	0.4	0.8	82.0%	1	7	30.8
Robert DeNier	9	8.9	7.6	84.3%	12	95	19.8
Youthtrack San Luis Valley	3	2.6	2.3	77.3%	4	40	15.2
<i>Staff Secure Total</i>	<i>30</i>	<i>23.3</i>	<i>23.0</i>	<i>76.7%</i>	<i>42</i>	<i>366</i>	<i>16.4</i>
TOTAL	479	424.3	422.7	88.2%	911	7,843	14.1



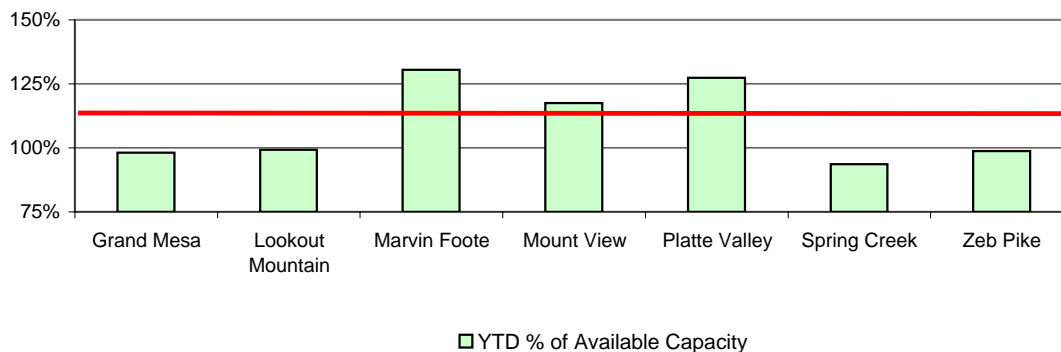
March 2006 DYC Population Report

III. Commitment Services

A. State and Contract Secure ADP by Facility

Facility	<u>Operational Capacity</u>	<u>March 2006</u>	<u>YTD</u>	<u>YTD % of Capacity</u>	<u>YTD % of Available Capacity</u>
State Secure					
Adams	0	1.0	0.3	N/A	N/A
Gilliam	0	2.4	3.5	N/A	N/A
Grand Mesa	44	42.0	44.0	100.1%	100.1%
Lookout	214	213.2	212.0	99.1%	99.1%
Marvin Foote	22	31.5	28.5	129.5%	129.5%
Mount View	73	86.3	86.4	118.4%	118.4%
Platte Valley	66	86.5	85.5	129.5%	129.5%
Pueblo	0	1.6	2.1	N/A	N/A
Spring Creek	44	48.3	48.2	109.5%	109.5%
Zeb Pike	40	41.8	40.3	100.8%	100.8%
<i>State Subtotal</i>	<i>503</i>	<i>554.6</i>	<i>550.9</i>	<i>109.5%</i>	<i>109.5%</i>
Contract Secure/Staff Supervised					
Betty K. Marler Cntr.		38.4	33.9		
Brown Center		1.7	1.9		
Cedar Springs		17.7	13.6		
Childrens Ark		0.0	0.2		
Devereux Cleo Wallace		17.7	15.5		
El Pueblo Ranch		6.1	9.3		
Excelsior Youth Center		2.0	1.9		
Glen Mills Schools		1.0	1.0		
Griffith Centers for Children		15.9	17.8		
Hilltop Youth Services		18.2	17.6		
Jefferson Hills		44.3	43.8		
Jefferson Hills Aurora		66.6	62.5		
Kidz Ark		4.0	5.8		
Mountain Star Center		6.0	4.8		
Ridge View		440.7	436.5		
Robert DeNier		12.1	8.0		
Southern Peaks		23.9	28.5		
Turning Point Center		7.0	7.8		
<i>Contract Secure Subtotal</i>		<i>723.4</i>	<i>710.2</i>		

**State Secure Commitment
Percent of Available Capacity by Facility**



March 2006

DYC Population Report

III. Commitment Services Continued

B. Community/Other Residential APD by Facility

<u>Facility</u>	<u>March 2006</u>	<u>YTD</u>
Community		
AYA Montrose	19.7	17.3
Boulder Community Treatment Center	0.0	0.5
Boulder County Social Services	1.0	0.7
Community Corrections & Work Release	3.5	3.7
Dale House	10.7	10.7
Daybreak Princeton	7.0	6.9
DAYS	11.1	9.6
Gateway	1.0	1.4
Griffith Centers for Children	13.2	9.7
Harmony Host Homes	1.0	0.1
Hilltop Youth Services	0.0	2.1
Kidz Ark New Raymer Ranch	0.3	0.0
Longmont Center	0.8	0.6
Lost and Found	1.0	4.8
Lutheran Family Services of Colo	1.0	0.1
Lyle Alzado Youth Home/PYSB Proctor	0.0	2.5
Miranda Place	0.0	1.1
Prairie View	1.0	1.9
Restitution Center	0.0	0.2
ROP	0.5	1.8
Synergy	7.2	6.0
Third Way	20.5	17.9
Turning Point	1.0	0.6
Turning Point Center for Youth & Family	23.2	21.4
Turning Point Mathews St	9.7	8.8
Youthtrack-Excel	0.0	10.7
Youthtrack-Jeffco	12.0	7.5
Youthtrack-San Luis Valley	3.9	3.4
Youthtrack-Work and Learn	8.1	8.5
Youth Ventures	8.6	8.7
<i>Community Subtotal</i>	<i>167.0</i>	<i>168.8</i>
<i>Private Contract Total</i>	<i>890.3</i>	<i>879.0</i>
<i>Other Residential*</i>	<i>21.8</i>	<i>19.2</i>
RESIDENTIAL TOTAL	1,466.7	1,449.1

*Includes Group Homes, Job Corps, etc.

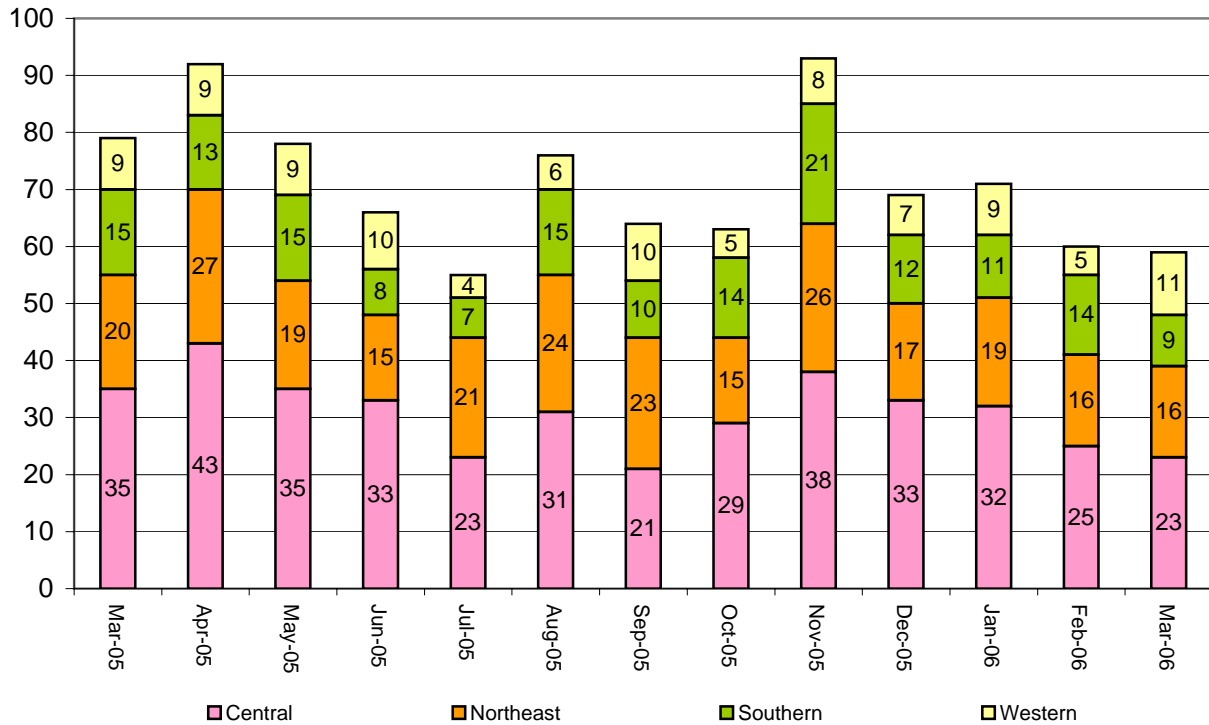
March 2006 DYC Population Report

IV. New Commitments

New Commitments by Region

	<u>March 2006</u>	<u>YTD</u>	<u>March 2005</u>	<u>Last YTD</u>
Central Region	23	285	32	278
Northeast Region	16	193	19	189
Southern Region	9	120	12	128
Western Region	11	66	8	102
New Commitment Total	59	664	71	697

Monthly New Commitments



March 2006 DYC Population Report

V. Parole Services

Parole ADP by Region

	<u>March 2006</u>	<u>YTD</u>	<u>Last YTD</u>
Central Region	203.7	209.6	203.2
Northeast Region	128.8	128.9	115.6
Southern Region	92.4	100.3	97.5
Western Region	62.4	71.7	73.4
Parole Total	487.3	510.4	489.7

	<u>Parole Intakes</u>		<u>Parole Discharges</u>		<u>Parole LOS</u>
	<u>March 2006</u>	<u>YTD</u>	<u>March 2006</u>	<u>YTD</u>	<u>YTD</u>
Central Region	29	302	30	279	6.4
Northeast Region	24	179	14	159	6.7
Southern Region	17	134	19	131	6.9
Western Region	7	88	9	86	7.3
Missing Region Data	2	10	0	0	
Parole Total	79	713	72	655	6.7

Monthly Parole ADP

