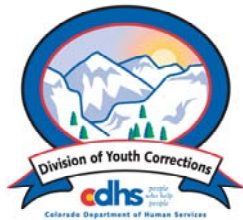


FEBRUARY 2006 MONTHLY POPULATION REPORT

Prepared by the Division of Youth Corrections Research and Evaluation Unit March 21, 2006



Colorado Department of Human Services
Division of Youth Corrections

Working with Colorado Communities to Achieve Justice

February 2006

DYC Population Report

I.	Summary Population Data	1
II.	Detention ADP by Facility	2
III.	Commitment Services	
	A. State and Contract Secure ADP by Facility	3
	B. Community/Other Residential ADP by Facility	4
IV.	New Commitments	5
V.	Parole Services	6

February 2006 DYC Population Report

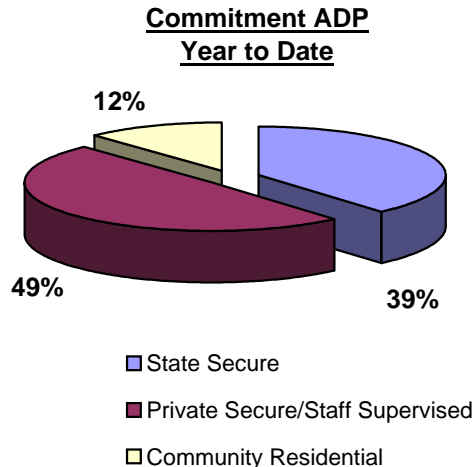
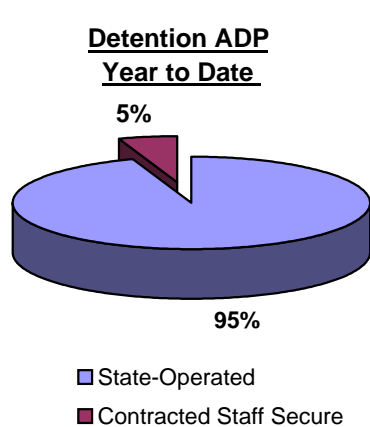
I. Summary Population Data

DETAINED YOUTH	Average Daily Population (ADP)		Length of Stay (LOS)
	February 2006	YTD	YTD
State-Operated	412.3	398.3	14.0 days
Contracted Staff Secure	22.1	22.6	16.4 days
Total Detained	434.4	420.9	14.1 days

COMMITTED YOUTH	Average Daily Population (ADP)		Length of Stay (LOS)
	February 2006	YTD	YTD
State Secure	561.0	550.3	
Private Secure/Staff Supervised	726.9	707.9	
Community Residential	171.1	169.4	
Other Residential*	21.4	18.9	
Total Committed Residential	1,480.4	1,446.5	18.4 months
<i>Committed Residential w/o Boulder</i>	<i>1,471.4</i>	<i>1,439.7</i>	

PAROLED YOUTH	Average Daily Population (ADP)		Length of Stay (LOS)
	February 2006	YTD	YTD
Total Paroled	494.1	511.2	6.7 months

TOTAL STATEWIDE ADP	2,408.9	2,378.6
----------------------------	----------------	----------------

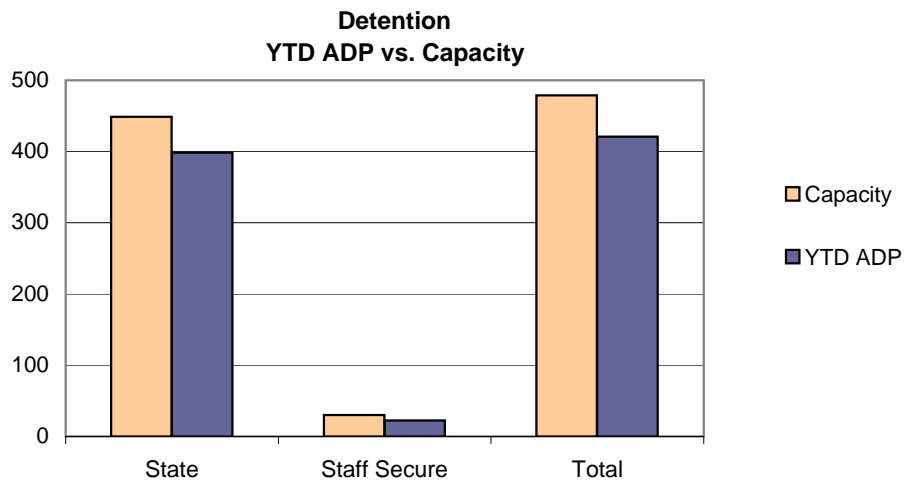


*Other Residential Includes Group Homes, Job Corps, etc.

February 2006 DYC Population Report

II. Detention ADP by Facility

Facility	Average Daily Population			New Admissions		YTD LOS in Days	
	Operating Capacity	February 2006	YTD	YTD % of Capacity	February 2006	YTD	LOS
<i>State Operated Detention</i>							
Adams YSC	28	26.9	24.1	86.0%	59	471	11.9
Gilliam	70	63.3	64.4	92.0%	120	1,018	14.6
Grand Mesa	24	20.9	21.5	89.6%	40	349	13.6
Marvin Foote	96	91.2	85.6	89.2%	136	1,206	16.6
Mount View	60	50.3	52.5	87.5%	78	658	18.3
Platte Valley	69	64.1	63.6	92.1%	133	1,254	11.8
Pueblo	36	32.1	30.9	85.9%	56	486	14.9
Spring Creek	66	63.6	55.7	84.4%	145	1,166	11.2
<i>State Subtotal</i>	<i>449</i>	<i>412.3</i>	<i>398.3</i>	<i>88.7%</i>	<i>767</i>	<i>6,608</i>	<i>14.0</i>
<i>Staff Secure Detention</i>							
Brown Center	2	0.4	0.9	46.0%	1	15	15.5
Emily Griffith	3	0.9	1.9	64.0%	4	33	13.8
Hilltop West	3	2.8	2.8	94.0%	4	28	23.7
Midway Remington	9	8.2	6.7	74.2%	12	123	12.8
Prowers	1	1.0	0.9	88.0%	0	6	34.2
Robert DeNier	9	7.0	7.1	78.3%	4	78	20.0
Youthtrack San Luis Valley	3	1.8	2.3	76.3%	4	36	15.0
<i>Staff Secure Total</i>	<i>30</i>	<i>22.1</i>	<i>22.6</i>	<i>75.2%</i>	<i>29</i>	<i>319</i>	<i>16.4</i>
TOTAL	479	434.4	420.9	87.9%	796	6,927	14.1



February 2006 DYC Population Report

III. Commitment Services

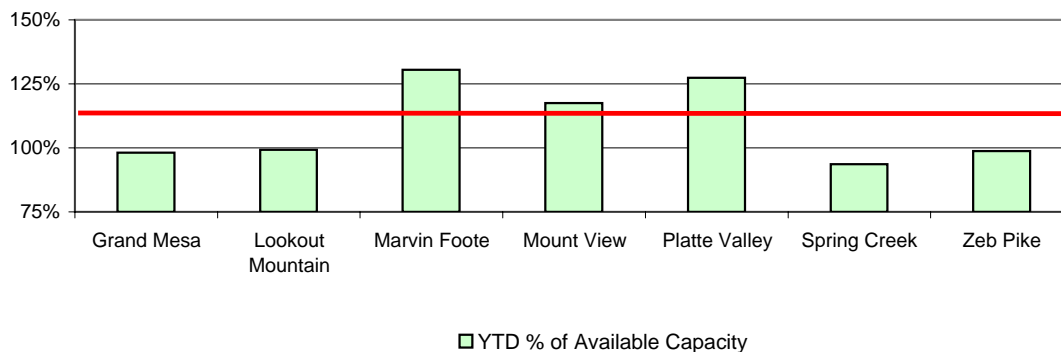
A. State and Contract Secure ADP by Facility

Facility	<u>Operational Capacity</u>	<u>February 2006</u>	<u>YTD</u>	<u>YTD % of Capacity</u>	<u>YTD % of Available Capacity</u>
State Secure					
Adams	0	0.3	0.3	N/A	N/A
Gilliam	0	3.1	3.7	N/A	N/A
Grand Mesa	44	39.6	44.3	100.7%	100.7%
Lookout	214	212.3	211.8	99.0%	99.0%
Marvin Foote	22	29.3	28.1	127.6%	127.6%
Mount View	73	87.5	86.3	118.2%	118.2%
Platte Valley	66	86.9	85.3	129.3%	129.3%
Pueblo	0	3.0	2.2	N/A	N/A
Spring Creek	44	57.3	48.2	109.6%	109.6%
Zeb Pike	40	41.7	40.1	100.3%	100.3%
<i>State Subtotal</i>	<i>503</i>	<i>561.0</i>	<i>550.3</i>	<i>109.4%</i>	<i>109.4%</i>

Contract Secure/Staff Supervised

Betty K. Marler Cntr.		38.2	33.3		
Brown Center		1.0	1.9		
Cedar Springs		15.1	13.1		
Childrens Ark		0.0	0.2		
Devereux Cleo Wallace		17.6	15.2		
El Pueblo Ranch		7.8	9.7		
Excelsior Youth Center		2.0	1.8		
Glen Mills Schools		1.0	1.0		
Griffith Centers for Children		17.6	18.0		
Hilltop Youth Services		18.1	17.5		
Jefferson Hills		43.4	43.3		
Jefferson Hills Aurora		67.2	62.0		
Kidz Ark		3.9	6.1		
Mountain Star Center		6.0	4.6		
Ridge View		453.0	436.0		
Robert DeNier		5.7	7.3		
Southern Peaks		23.3	29.1		
Turning Point Center		5.9	7.9		
<i>Contract Secure Subtotal</i>		<i>726.9</i>	<i>707.9</i>		

**State Secure Commitment
Percent of Available Capacity by Facility**



February 2006

DYC Population Report

III. Commitment Services Continued

B. Community/Other Residential APD by Facility

<u>Facility</u>	<u>February</u> <u>2006</u>	<u>YTD</u>
Community		
AYA Montrose	21.1	17.1
Boulder Community Treatment Center	0.0	0.5
Boulder County Social Services	1.0	0.6
Community Corrections & Work Release	4.3	3.7
Dale House	10.4	10.7
Daybreak Princeton	8.7	6.9
DAYS	11.2	9.4
Gateway	1.0	1.4
Griffith Centers for Children	13.1	9.2
Hilltop Youth Services	1.4	2.4
Longmont Center	1.0	0.6
Lost and Found	1.0	5.3
Lutheran Family Services of Colo	0.3	0.0
Lyle Alzado Youth Home/PYSB Proctor	0.0	2.8
Miranda Place	0.0	1.2
Prairie View	1.0	2.0
Restitution Center	0.1	0.2
ROP	2.0	2.0
Synergy	6.2	6.1
Third Way	18.2	17.5
Turning Point	1.0	0.5
Turning Point Center for Youth & Family	22.9	21.1
Turning Point Mathews St	10.3	8.7
Youthtrack-Excel	0.0	12.0
Youthtrack-Jeffco	11.0	6.9
Youthtrack-San Luis Valley	5.0	3.4
Youthtrack-Work and Learn	10.1	8.6
Youth Ventures	9.0	8.7
<i>Community Subtotal</i>	<i>171.1</i>	<i>169.4</i>
<i>Private Contract Total</i>	<i>898.0</i>	<i>877.3</i>
<i>Other Residential*</i>	<i>21.4</i>	<i>18.9</i>
RESIDENTIAL TOTAL	1,480.4	1,446.5

*Includes Group Homes, Job Corps, etc.

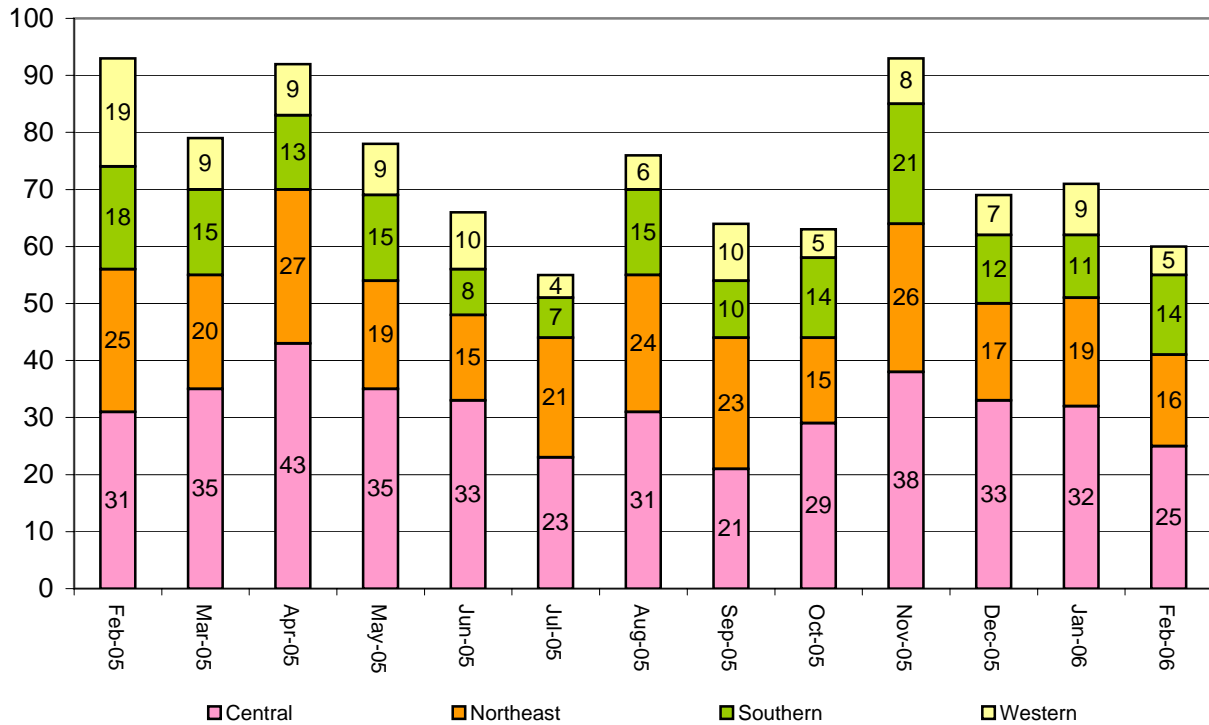
February 2006 DYC Population Report

IV. New Commitments

New Commitments by Region

	<u>February 2006</u>	<u>YTD</u>	<u>February 2005</u>	<u>Last YTD</u>
Central Region	25	262	28	242
Northeast Region	16	174	20	165
Southern Region	14	111	14	113
Western Region	5	55	16	91
New Commitment Total	60	602	78	611

Monthly New Commitments



February 2006 DYC Population Report

V. Parole Services

Parole ADP by Region

	<u>February 2006</u>	<u>YTD</u>	<u>Last YTD</u>
Central Region	203.7	211.1	203.3
Northeast Region	133.1	127.6	112.7
Southern Region	91.0	99.8	95.7
Western Region	66.4	72.7	75.6
Parole Total	494.1	511.2	487.3

	Parole Intakes		Parole Discharges		Parole LOS
	<u>February 2006</u>	<u>YTD</u>	<u>February 2006</u>	<u>YTD</u>	<u>YTD</u>
Central Region	28	272	34	249	6.4
Northeast Region	16	156	23	143	6.8
Southern Region	7	115	11	111	7.0
Western Region	12	80	10	71	7.1
Missing Region Data	0	10	0	0	
Parole Total	63	633	78	574	6.7

Monthly Parole ADP

