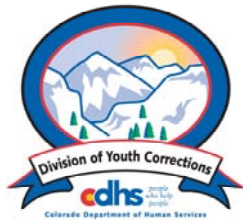


JANUARY 2006 MONTHLY POPULATION REPORT

Prepared by the Division of Youth Corrections Research and Evaluation Unit February 21, 2006



Colorado Department of Human Services
Division of Youth Corrections

Working with Colorado Communities to Achieve Justice

January 2006 DYC Population Report

| | | |
|-------------|--|----------|
| I. | Summary Population Data | 1 |
| II. | Detention ADP by Facility | 2 |
| III. | Commitment Services | |
| | A. State and Contract Secure ADP by Facility | 3 |
| | B. Community/Other Residential ADP by Facility | 4 |
| IV. | New Commitments | 5 |
| V. | Parole Services | 6 |

January 2006 DYC Population Report

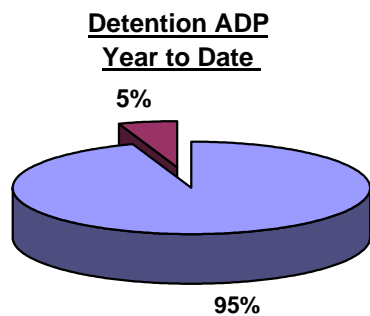
I. Summary Population Data

| DETAINED YOUTH | Average Daily Population (ADP) | | Length of Stay (LOS) |
|-------------------------|---------------------------------------|--------------|-----------------------------|
| | January 2006 | YTD | YTD |
| State-Operated | 394.9 | 396.2 | 13.9 days |
| Contracted Staff Secure | 24.2 | 22.6 | 15.6 days |
| Total Detained | 419.2 | 418.8 | 14.0 days |

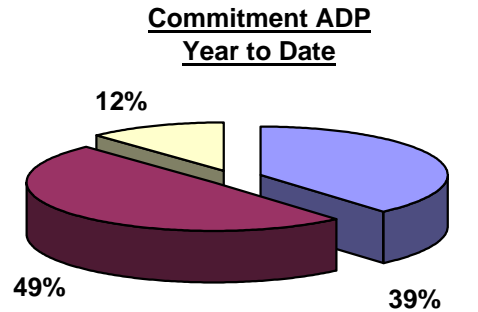
| COMMITTED YOUTH | Average Daily Population (ADP) | | Length of Stay (LOS) |
|--|---------------------------------------|----------------|-----------------------------|
| | January 2006 | YTD | YTD |
| State Secure | 556.0 | 548.3 | |
| Private Secure/Staff Supervised | 708.5 | 705.4 | |
| Community Residential | 175.6 | 168.0 | |
| Other Residential* | 20.7 | 18.0 | |
| Total Committed Residential | 1,460.8 | 1,439.7 | 18.7 months |
| <i>Committed Residential w/o Boulder</i> | <i>1,453.0</i> | <i>1,433.2</i> | |

| PAROLED YOUTH | Average Daily Population (ADP) | | Length of Stay (LOS) |
|----------------------|---------------------------------------|--------------|-----------------------------|
| | January 2006 | YTD | YTD |
| Total Paroled | 508.7 | 510.7 | 6.7 months |

| | | |
|----------------------------|----------------|----------------|
| TOTAL STATEWIDE ADP | 2,388.7 | 2,369.3 |
|----------------------------|----------------|----------------|



■ State-Operated
■ Contracted Staff Secure



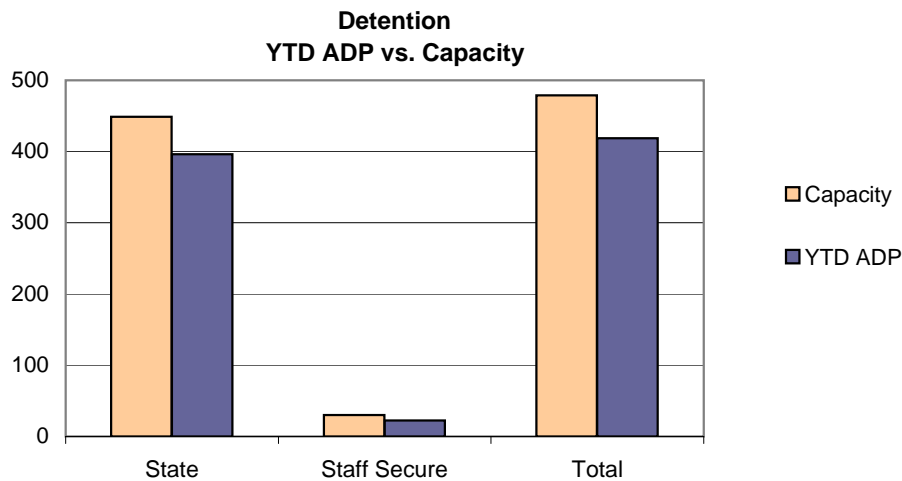
■ State Secure
■ Private Secure/Staff Supervised
■ Community Residential

*Other Residential Includes Group Homes, Job Corps, etc.

January 2006 DYC Population Report

II. Detention ADP by Facility

| Facility | Average Daily Population | | | New Admissions | | YTD LOS in Days | |
|---------------------------------|--------------------------|--------------|--------------|-------------------|--------------|-----------------|-------------|
| | Operating Capacity | January 2006 | YTD | YTD % of Capacity | January 2006 | YTD | LOS |
| <i>State Operated Detention</i> | | | | | | | |
| Adams YSC | 28 | 25.2 | 23.8 | 85.1% | 72 | 412 | 12.2 |
| Gilliam | 70 | 64.2 | 64.6 | 92.2% | 142 | 898 | 14.6 |
| Grand Mesa | 24 | 21.0 | 21.7 | 90.2% | 42 | 309 | 14.0 |
| Marvin Foote | 96 | 84.0 | 85.0 | 88.5% | 166 | 1,070 | 16.5 |
| Mount View | 60 | 51.1 | 52.8 | 87.9% | 92 | 580 | 18.2 |
| Platte Valley | 69 | 65.1 | 63.1 | 91.5% | 155 | 1,121 | 11.5 |
| Pueblo | 36 | 29.2 | 30.8 | 85.6% | 72 | 430 | 15.2 |
| Spring Creek | 66 | 55.2 | 54.5 | 82.5% | 143 | 1,020 | 11.0 |
| <i>State Subtotal</i> | <i>449</i> | <i>394.9</i> | <i>396.2</i> | <i>88.2%</i> | <i>884</i> | <i>5,840</i> | <i>13.9</i> |
| <i>Staff Secure Detention</i> | | | | | | | |
| Brown Center | 2 | 0.2 | 1.0 | 49.0% | 2 | 14 | 15.5 |
| Emily Griffith | 3 | 2.4 | 2.0 | 66.0% | 4 | 29 | 12.0 |
| Hilltop West | 3 | 2.7 | 2.8 | 94.3% | 5 | 24 | 25.3 |
| Midway Remington | 9 | 6.7 | 6.5 | 72.2% | 22 | 111 | 12.3 |
| Prowers | 1 | 1.0 | 0.9 | 87.0% | 1 | 6 | 34.2 |
| Robert DeNier | 9 | 9.2 | 7.1 | 79.1% | 9 | 73 | 17.2 |
| Youthtrack San Luis Valley | 3 | 1.9 | 2.4 | 78.3% | 3 | 32 | 15.7 |
| <i>Staff Secure Total</i> | <i>30</i> | <i>24.2</i> | <i>22.6</i> | <i>75.4%</i> | <i>46</i> | <i>289</i> | <i>15.6</i> |
| TOTAL | 479 | 419.2 | 418.8 | 87.4% | 930 | 6,129 | 14.0 |



January 2006 DYC Population Report

III. Commitment Services

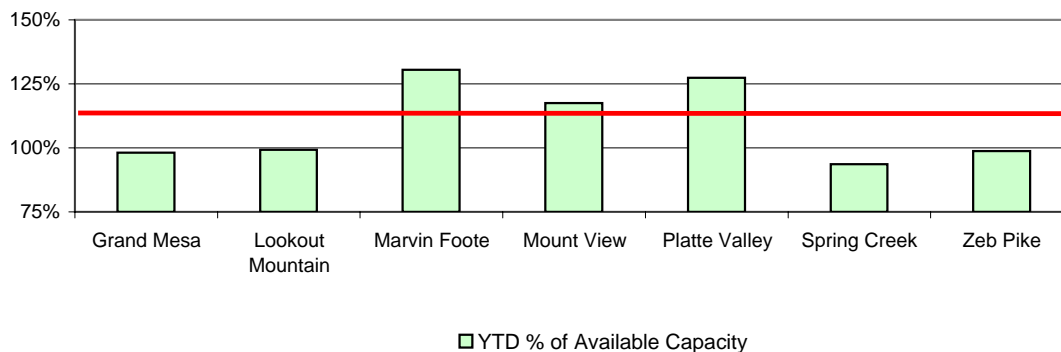
A. State and Contract Secure ADP by Facility

| Facility | <u>Operational Capacity</u> | <u>January 2006</u> | <u>YTD</u> | <u>YTD % of Capacity</u> | <u>YTD % of Available Capacity</u> |
|-----------------------|---------------------------------|---------------------|--------------|------------------------------|--|
| State Secure | | | | | |
| Adams | 0 | 0.0 | 0.3 | N/A | N/A |
| Gilliam | 0 | 2.5 | 3.9 | N/A | N/A |
| Grand Mesa | 44 | 43.4 | 44.9 | 102.0% | 102.0% |
| Lookout | 214 | 211.3 | 211.1 | 98.7% | 98.7% |
| Marvin Foote | 22 | 28.9 | 27.8 | 126.2% | 126.2% |
| Mount View | 73 | 89.3 | 86.1 | 118.0% | 118.0% |
| Platte Valley | 66 | 82.7 | 85.1 | 128.9% | 128.9% |
| Pueblo | 0 | 1.9 | 2.1 | N/A | N/A |
| Spring Creek | 44 | 55.0 | 47.1 | 107.1% | 107.1% |
| Zeb Pike | 40 | 40.9 | 39.9 | 99.8% | 99.8% |
| <i>State Subtotal</i> | <i>503</i> | <i>556.0</i> | <i>548.3</i> | <i>109.0%</i> | <i>109.0%</i> |

Contract Secure/Staff Supervised

| | | | | | |
|---------------------------------|--|--------------|--------------|--|--|
| Betty K. Marler Cntr. | | 38.1 | 32.7 | | |
| Brown Center | | 0.1 | 2.0 | | |
| Cedar Springs | | 11.8 | 12.8 | | |
| Childrens Ark | | 0.2 | 0.3 | | |
| Devereux Cleo Wallace | | 16.4 | 14.9 | | |
| El Pueblo Ranch | | 8.9 | 10.0 | | |
| Excelsior Youth Center | | 2.0 | 1.8 | | |
| Glen Mills Schools | | 1.0 | 1.0 | | |
| Griffith Centers for Children | | 17.8 | 18.1 | | |
| Hilltop West | | 18.8 | 17.0 | | |
| Jefferson Hills | | 42.1 | 43.6 | | |
| Jefferson Hills Aurora | | 67.6 | 61.3 | | |
| Kidz Ark | | 5.2 | 6.4 | | |
| Mountain Star Center | | 5.4 | 4.4 | | |
| Ridge View | | 440.9 | 433.7 | | |
| Robert DeNier | | 5.0 | 7.5 | | |
| Southern Peaks | | 22.5 | 29.9 | | |
| Turning Point Center | | 4.8 | 8.2 | | |
| <i>Contract Secure Subtotal</i> | | <i>708.5</i> | <i>705.4</i> | | |

**State Secure Commitment
Percent of Available Capacity by Facility**



January 2006

DYC Population Report

III. Commitment Services Continued

B. Community/Other Residential APD by Facility

| <u>Facility</u> | <u>January</u> <u>2006</u> | <u>YTD</u> |
|---|-------------------------------|----------------|
| Community | | |
| AYA Montrose | 17.9 | 16.7 |
| Boulder Community Treatment Center | 0.0 | 0.6 |
| Boulder County Social Services | 1.0 | 0.6 |
| Community Corrections & Work Release | 4.0 | 3.6 |
| Dale House | 10.1 | 10.7 |
| Daybreak Princeton | 7.6 | 6.6 |
| DAYS | 11.5 | 9.1 |
| Gateway | 1.0 | 1.5 |
| Griffith Centers for Children | 12.8 | 8.7 |
| Hilltop Youth Services | 2.0 | 2.5 |
| Longmont Center | 0.9 | 0.5 |
| Lost and Found | 1.4 | 5.8 |
| Lyle Alzado Youth Home/PYSB Proctor | 0.0 | 3.2 |
| Miranda Place | 0.8 | 2.1 |
| Prairie View | 1.0 | 2.1 |
| Restitution Center | 0.2 | 0.2 |
| ROP | 2.0 | 2.0 |
| Synergy | 6.8 | 6.1 |
| Third Way | 17.1 | 17.3 |
| Turning Point | 1.0 | 0.4 |
| Turning Point Center for Youth & Family | 24.7 | 21.0 |
| Turning Point Mathews St | 10.7 | 8.5 |
| Youthtrack-Excel | 9.7 | 13.7 |
| Youthtrack-Jeffco | 9.3 | 6.4 |
| Youthtrack-San Luis Valley | 5.0 | 3.2 |
| Youthtrack-Work and Learn | 10.2 | 8.6 |
| Youth Ventures | 7.0 | 6.3 |
| <i>Community Subtotal</i> | <i>175.6</i> | <i>168.0</i> |
| <i>Private Contract Total</i> | <i>884.1</i> | <i>873.4</i> |
| <i>Other Residential*</i> | <i>20.7</i> | <i>18.0</i> |
| RESIDENTIAL TOTAL | 1,460.8 | 1,439.7 |

*Includes Group Homes, Job Corps, etc.

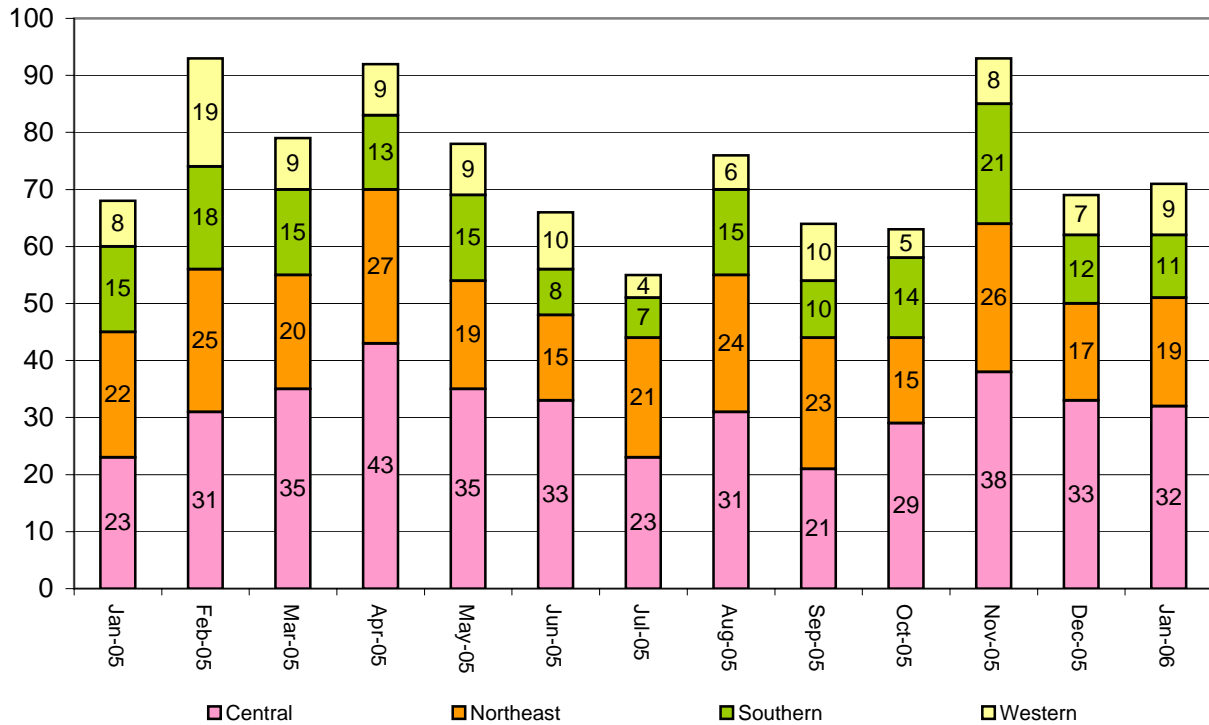
January 2006 DYC Population Report

IV. New Commitments

New Commitments by Region

| | <u>January 2006</u> | <u>YTD</u> | <u>January 2005</u> | <u>Last YTD</u> |
|-----------------------------|---------------------|------------|---------------------|-----------------|
| Central Region | 32 | 232 | 22 | 214 |
| Northeast Region | 19 | 154 | 21 | 144 |
| Southern Region | 11 | 95 | 15 | 97 |
| Western Region | 9 | 50 | 8 | 76 |
| New Commitment Total | 71 | 531 | 66 | 531 |

Monthly New Commitments



January 2006 DYC Population Report

V. Parole Services

Parole ADP by Region

| | <u>January 2006</u> | <u>YTD</u> | <u>Last YTD</u> |
|---------------------|-------------------------|--------------|-----------------|
| Central Region | 207.7 | 209.7 | 204.8 |
| Northeast Region | 132.3 | 127.5 | 111.6 |
| Southern Region | 99.5 | 100.2 | 94.1 |
| Western Region | 69.3 | 73.4 | 74.5 |
| Parole Total | 508.7 | 510.7 | 485.1 |

| | Parole Intakes | | Parole Discharges | | Parole LOS |
|---------------------|-----------------------|------------|--------------------------|------------|-------------------|
| | <u>January 2006</u> | <u>YTD</u> | <u>January 2006</u> | <u>YTD</u> | <u>YTD</u> |
| Central Region | 29 | 241 | 14 | 211 | 6.4 |
| Northeast Region | 22 | 142 | 15 | 120 | 6.8 |
| Southern Region | 13 | 106 | 10 | 95 | 6.7 |
| Western Region | 7 | 68 | 9 | 61 | 7.3 |
| Missing Region Data | 4 | 11 | 0 | 0 | |
| Parole Total | 75 | 568 | 48 | 487 | 6.7 |

Monthly Parole ADP

