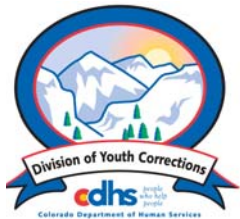


DECEMBER 2005 MONTHLY POPULATION REPORT

Prepared by the Division of Youth Corrections Research and Evaluation Unit January 17, 2006



Colorado Department of Human Services
Division of Youth Corrections

Working with Colorado Communities to Achieve Justice

December 2005

DYC Population Report

I.	Summary Population Data	1
II.	Detention ADP by Facility	2
III.	Commitment Services	
	A. State and Contract Secure ADP by Facility	3
	B. Community/Other Residential ADP by Facility	4
IV.	New Commitments	5
V.	Parole Services	6

December 2005 DYC Population Report

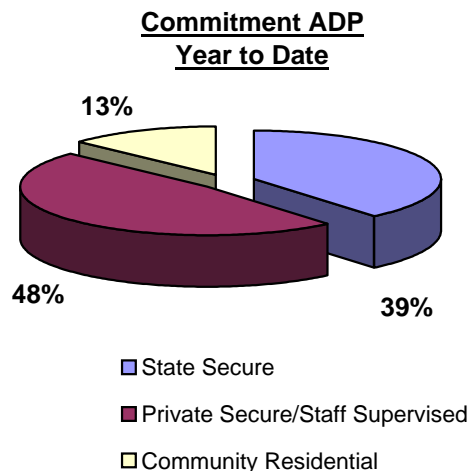
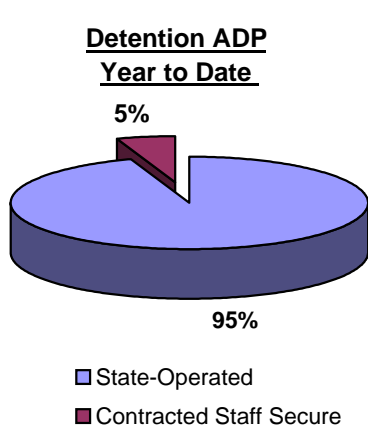
I. Summary Population Data

DETAINED YOUTH	Average Daily Population (ADP)		Length of Stay (LOS)
	December 2005	YTD	YTD
State-Operated	383.3	396.6	13.8 days
Contracted Staff Secure	22.7	22.4	15.5 days
Total Detained	405.9	419.0	13.9 days

COMMITTED YOUTH	Average Daily Population (ADP)		Length of Stay (LOS)
	December 2005	YTD	YTD
State Secure	568.9	547.2	
Private Secure/Staff Supervised	672.7	681.3	
Community Residential	188.3	183.0	
Other Residential*	19.8	17.8	
Total Committed Residential	1,449.7	1,429.3	18.8 months
<i>Committed Residential w/o Boulder</i>	<i>1,442.7</i>	<i>1,422.4</i>	

PAROLED YOUTH	Average Daily Population (ADP)		Length of Stay (LOS)
	December 2005	YTD	YTD
Total Paroled	503.3	512.1	6.7 months

TOTAL STATEWIDE ADP	2,359.0	2,360.4
----------------------------	----------------	----------------



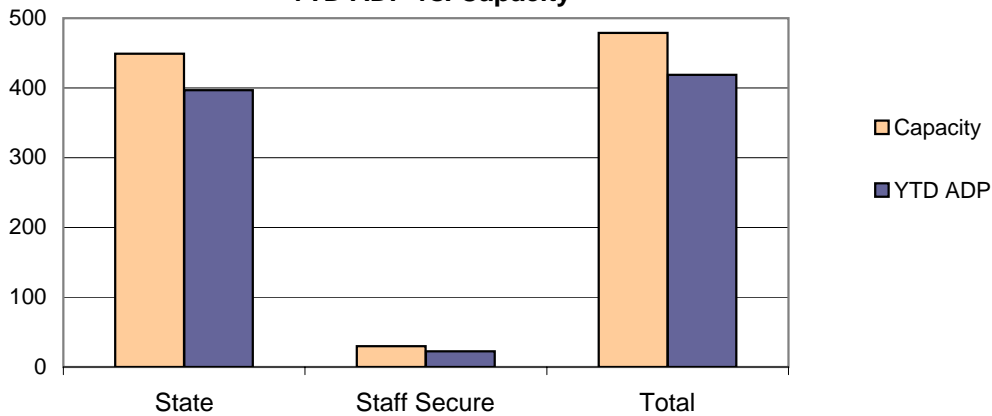
*Other Residential Includes Group Homes, Job Corps, etc.

December 2005 DYC Population Report

II. Detention ADP by Facility

Facility	Average Daily Population				New Admissions		YTD LOS in Days	
	Operating Capacity	December 2005	YTD	YTD % of Capacity	December 2005	YTD	LOS	
<i>State Operated Detention</i>								
Adams YSC	28	23.5	23.5	84.0%	84.0%	60	340	11.9
Gilliam	70	57.9	64.7	92.4%	92.4%	95	756	14.7
Grand Mesa	24	22.1	21.8	90.6%	90.6%	38	267	13.5
Marvin Foote	96	84.7	85.2	88.8%	88.8%	147	904	16.4
Mount View	60	50.9	53.1	88.5%	88.5%	81	488	18.2
Platte Valley	69	58.4	62.9	91.2%	91.2%	135	965	11.4
Pueblo	36	30.9	31.0	86.0%	86.0%	55	358	14.7
Spring Creek	66	55.0	54.5	82.5%	82.5%	118	877	10.8
<i>State Subtotal</i>	<i>449</i>	<i>383.3</i>	<i>396.6</i>	<i>88.3%</i>	<i>88.3%</i>	<i>729</i>	<i>4,955</i>	<i>13.8</i>
<i>Staff Secure Detention</i>								
Brown Center	2	0.7	1.1	57.0%	57.0%	1	12	17.2
Emily Griffith	3	2.1	1.9	64.0%	64.0%	3	25	11.4
Hilltop West	3	2.9	2.9	95.0%	95.0%	4	19	30.1
Midway Remington	9	5.3	6.5	71.9%	71.9%	15	89	12.8
Prowers	1	1.0	0.8	83.0%	83.0%	0	5	22.9
Robert DeNier	9	8.1	6.8	75.6%	75.6%	7	64	16.8
Youthtrack San Luis Valley	3	2.6	2.4	80.3%	80.3%	4	29	13.5
<i>Staff Secure Total</i>	<i>30</i>	<i>22.7</i>	<i>22.4</i>	<i>74.7%</i>	<i>74.7%</i>	<i>34</i>	<i>243</i>	<i>15.5</i>
TOTAL	479	405.9	419.0	87.5%	87.5%	763	5,198	13.9

**Detention
YTD ADP vs. Capacity**



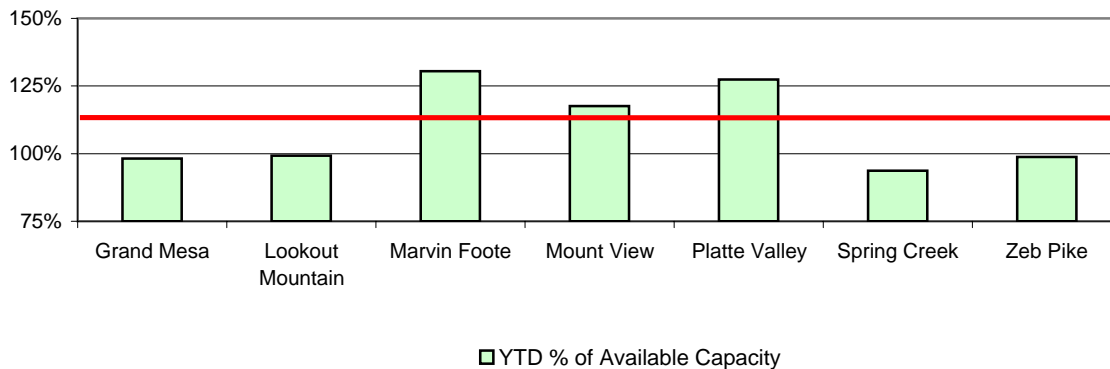
December 2005 DYC Population Report

III. Commitment Services

A. State and Contract Secure ADP by Facility

Facility	<u>Operational Capacity</u>	<u>December 2005</u>	<u>YTD</u>	<u>YTD % of Capacity</u>	<u>YTD % of Available Capacity</u>
State Secure					
Adams	0	0.3	0.3	N/A	N/A
Gilliam	0	4.8	4.1	N/A	N/A
Grand Mesa	44	49.7	45.1	102.6%	102.6%
Lookout	214	209.4	211.3	98.7%	98.7%
Marvin Foote	22	25.1	27.6	125.3%	125.3%
Mount View	73	89.9	85.5	117.2%	117.2%
Platte Valley	66	91.1	85.5	129.5%	129.5%
Pueblo	0	2.9	2.1	N/A	N/A
Spring Creek	44	55.1	45.9	104.3%	104.3%
Zeb Pike	40	40.9	39.8	99.4%	99.4%
<i>State Subtotal</i>	<i>503</i>	<i>568.9</i>	<i>547.2</i>	<i>108.8%</i>	<i>108.8%</i>
Contract Secure/Staff Supervised					
Betty K. Marler Cntr.		38.0	31.7		
Brown Center		2.7	2.3		
Cedar Springs		11.0	13.0		
Childrens Ark		1.0	0.3		
El Pueblo Ranch		8.0	10.1		
Excelsior Youth Center		1.9	1.8		
Glen Mills Schools		1.0	1.0		
Griffith Centers for Children		17.2	18.2		
Hilltop West		9.8	8.8		
Jefferson Hills		102.6	103.3		
Kidz Ark		6.5	6.6		
Mountain Star Center		5.0	4.3		
Ridge View		434.3	432.5		
Robert DeNier		4.5	7.9		
Southern Peaks		23.5	31.0		
Turning Point Center		5.7	8.7		
<i>Contract Secure Subtotal</i>		<i>672.7</i>	<i>681.3</i>		

**State Secure Commitment
Percent of Available Capacity by Facility**



December 2005

DYC Population Report

III. Commitment Services Continued

B. Community/Other Residential APD by Facility

<u>Facility</u>	<u>December</u> <u>2005</u>	<u>YTD</u>
Community		
AYA Montrose	15.9	17.5
Boulder Community Treatment Center	0.0	0.7
Boulder County Social Services	1.0	0.5
Community Corrections & Work Release	3.5	3.6
Dale House	11.5	10.8
Daybreak Princeton	6.1	6.4
DAYS	8.5	8.7
Devereux Cleo Wallace	14.0	14.7
Gateway	1.4	1.5
Griffith Centers for Children	12.3	8.0
Hilltop Youth Services	2.1	2.6
Longmont Center	0.5	0.4
Lost and Found	3.9	6.6
Lyle Alzado Youth Home/PYSB Proctor	0.0	3.7
Miranda Place	2.0	2.9
Prairie View	1.0	2.3
Restitution Center	0.0	0.2
ROP	2.0	2.0
Synergy	7.4	5.9
Third Way	17.2	17.3
Turning Point	34.0	28.9
Youthtrack-Excel	13.2	14.4
Youthtrack-Jeffco	9.8	5.9
Youthtrack-San Luis Valley	4.7	2.9
Youthtrack-Work and Learn	8.3	8.2
Youth Ventures	8.1	6.2
<i>Community Subtotal</i>	<i>188.3</i>	<i>183.0</i>
<i>Private Contract Total</i>	<i>861.0</i>	<i>864.3</i>
<i>Other Residential*</i>	<i>19.8</i>	<i>17.8</i>
RESIDENTIAL TOTAL	1,449.7	1,429.3

*Includes Group Homes, Job Corps, etc.

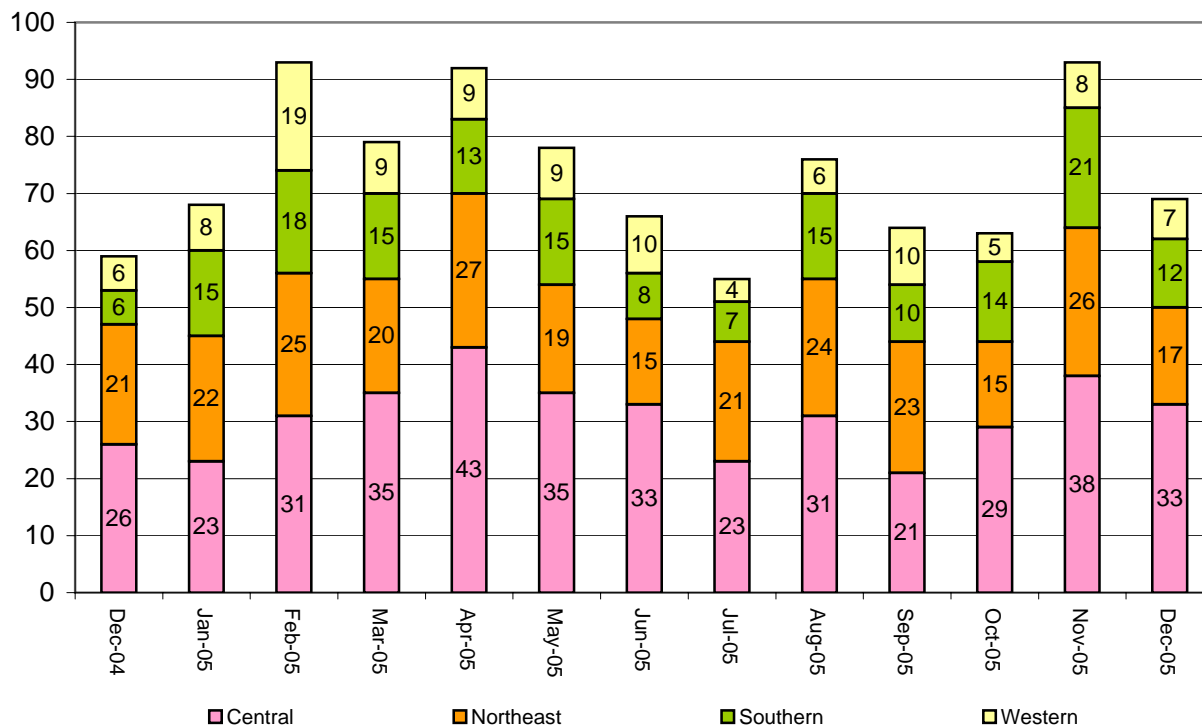
December 2005 DYC Population Report

IV. New Commitments

New Commitments by Region

	<u>December 2005</u>	<u>YTD</u>	<u>December 2004</u>	<u>Last YTD</u>
Central Region	33	198	26	191
Northeast Region	17	133	20	122
Southern Region	12	83	5	81
Western Region	7	41	6	68
New Commitment Total	69	455	57	462

Monthly New Commitments



December 2005 DYC Population Report

V. Parole Services

Parole ADP by Region

	<u>December 2005</u>	<u>YTD</u>	<u>Last YTD</u>
Central Region	212.5	210.5	201.2
Northeast Region	124.6	125.5	107.9
Southern Region	100.3	102.0	91.9
Western Region	65.9	74.1	70.8
Parole Total	503.3	512.1	471.8

Parole Intakes

Parole Discharges

Parole LOS

	<u>December 2005</u>		<u>December 2005</u>		<u>YTD</u>
	YTD	YTD	YTD	YTD	YTD
Central Region	41	215	39	198	6.4
Northeast Region	23	119	16	102	6.9
Southern Region	21	94	13	83	6.7
Western Region	7	60	7	51	7.5
Missing Region Data	1	6	0	0	
Parole Total	93	494	75	434	6.7

Monthly Parole ADP

