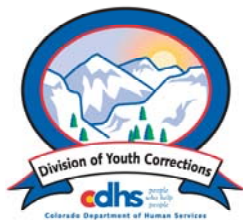


# NOVEMBER 2005 MONTHLY POPULATION REPORT

---

Prepared by the Division of Youth Corrections Research and Evaluation Unit December 20, 2005



**Colorado Department of Human Services**  
**Division of Youth Corrections**

---

Working with Colorado Communities to Achieve Justice

# November 2005

## DYC Population Report

<b>I.</b>	<b>Summary Population Data</b>	<b>1</b>
<b>II.</b>	<b>Detention ADP by Facility</b>	<b>2</b>
<b>III.</b>	<b>Commitment Services</b>	
	A. State and Contract Secure ADP by Facility	<b>3</b>
	B. Community/Other Residential ADP by Facility	<b>4</b>
<b>IV.</b>	<b>New Commitments</b>	<b>5</b>
<b>V.</b>	<b>Parole Services</b>	<b>6</b>

# November 2005 DYC Population Report

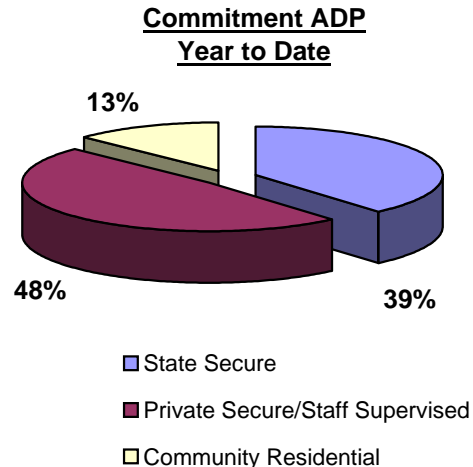
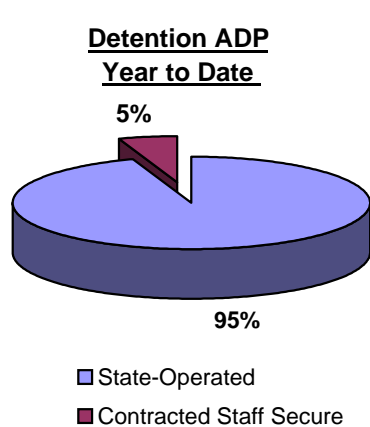
## I. Summary Population Data

<b>DETAINED YOUTH</b>	<b>Average Daily Population (ADP)</b>		<b>Length of Stay (LOS)</b>
	<b>November 2005</b>	<b>YTD</b>	<b>YTD</b>
State-Operated	412.2	397.6	13.5 days
Contracted Staff Secure	23.8	22.3	16.0 days
<b>Total Detained</b>	<b>436.0</b>	<b>419.8</b>	<b>13.6 days</b>

<b>COMMITTED YOUTH</b>	<b>Average Daily Population (ADP)</b>		<b>Length of Stay (LOS)</b>
	<b>November 2005</b>	<b>YTD</b>	<b>YTD</b>
State Secure	551.2	542.8	
Private Secure/Staff Supervised	674.0	683.4	
Community Residential	179.6	180.0	
Other Residential*	21.5	17.7	
<b>Total Committed Residential</b>	<b>1,426.3</b>	<b>1,423.8</b>	<b>18.7 months</b>
<i>Committed Residential w/o Boulder</i>	<i>1,419.3</i>	<i>1,417.0</i>	

<b>PAROLED YOUTH</b>	<b>Average Daily Population (ADP)</b>		<b>Length of Stay (LOS)</b>
	<b>November 2005</b>	<b>YTD</b>	<b>YTD</b>
<b>Total Paroled</b>	<b>508.5</b>	<b>510.5</b>	<b>6.6 months</b>

<b>TOTAL STATEWIDE ADP</b>	<b>2,370.8</b>	<b>2,354.1</b>
----------------------------	----------------	----------------

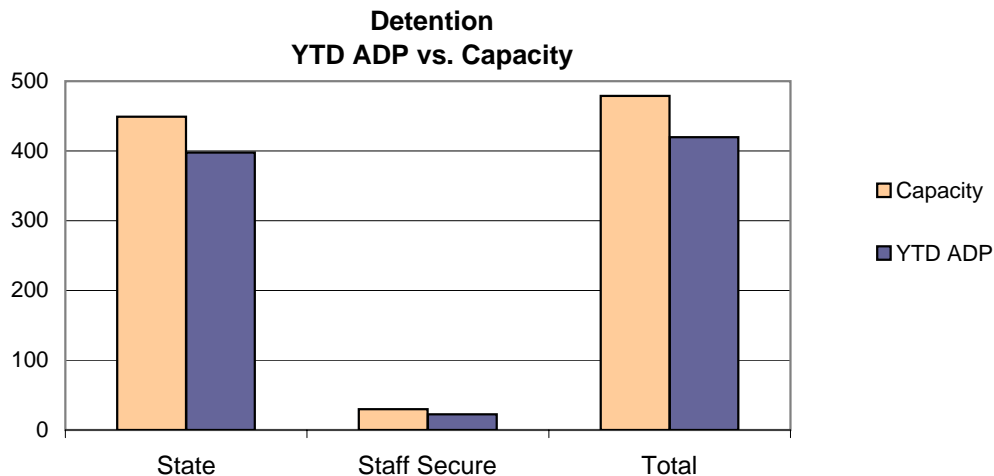


\*Other Residential Includes Group Homes, Job Corps, etc.

# November 2005 DYC Population Report

## II. Detention ADP by Facility

Facility	Average Daily Population				New Admissions		YTD LOS in Days	
	Operating Capacity	November 2005	YTD	YTD % of Capacity	YTD % Available Capacity	November 2005	YTD	LOS
<i>State Operated Detention</i>								
Adams YSC	28	26.2	23.5	84.1%	84.1%	68	280	11.2
Gilliam	70	68.3	66.1	94.4%	94.4%	131	661	14.2
Grand Mesa	24	23.0	21.6	90.2%	90.2%	50	229	13.2
Marvin Foote	96	90.2	85.3	88.9%	88.9%	147	757	16.2
Mount View	60	51.6	53.4	89.0%	89.0%	84	407	18.0
Platte Valley	69	64.0	63.6	92.2%	92.2%	171	831	11.3
Pueblo	36	28.7	30.9	85.9%	85.9%	54	303	15.0
Spring Creek	66	60.2	53.1	80.4%	80.4%	157	759	10.3
<i>State Subtotal</i>	<i>449</i>	<i>412.2</i>	<i>397.6</i>	<i>88.5%</i>	<i>88.5%</i>	<i>862</i>	<i>4,227</i>	<i>13.5</i>
<i>Staff Secure Detention</i>								
Brown Center	2	0.9	1.2	62.0%	62.0%	1	11	18.2
Emily Griffith	3	2.8	1.9	62.0%	62.0%	7	22	12.3
Hilltop West	3	3.0	2.8	94.3%	94.3%	2	15	29.4
Midway Remington	9	7.2	6.7	74.1%	74.1%	27	74	13.9
Prowers	1	1.0	0.8	81.0%	81.0%	1	5	22.9
Robert DeNier	9	6.3	6.5	71.9%	71.9%	10	57	16.9
Youthtrack San Luis Valley	3	2.6	2.4	79.7%	79.7%	3	25	13.7
<i>Staff Secure Total</i>	<i>30</i>	<i>23.8</i>	<i>22.3</i>	<i>74.2%</i>	<i>79.5%</i>	<i>51</i>	<i>209</i>	<i>16.0</i>
<b>TOTAL</b>	<b>479</b>	<b>436.0</b>	<b>419.8</b>	<b>87.6%</b>	<b>88.0%</b>	<b>913</b>	<b>4,436</b>	<b>13.6</b>



# November 2005

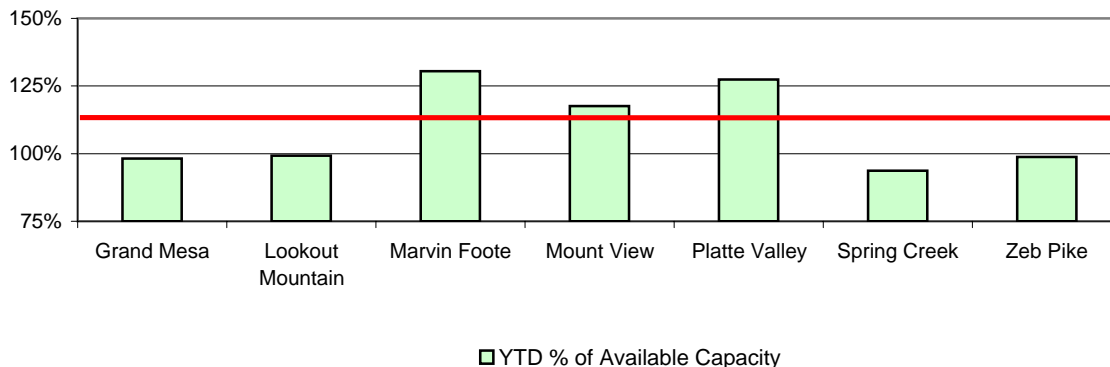
## DYC Population Report

### III. Commitment Services

#### A. State and Contract Secure ADP by Facility

Facility	<u>Operational Capacity</u>	<u>November 2005</u>	<u>YTD</u>	<u>YTD % of Capacity</u>	<u>YTD % of Available Capacity</u>
<b>State Secure</b>					
Adams	0	0.2	0.3	N/A	N/A
Gilliam	0	4.4	3.9	N/A	N/A
Grand Mesa	44	48.4	44.2	100.5%	100.5%
Lookout	214	209.2	211.7	98.9%	98.9%
Marvin Foote	22	25.6	28.1	127.6%	127.6%
Mount View	73	80.2	84.7	116.0%	116.0%
Platte Valley	66	85.3	84.4	127.8%	127.8%
Pueblo	0	2.4	2.0	N/A	N/A
Spring Creek	44	56.0	44.1	100.2%	100.2%
Zeb Pike	40	39.6	39.5	98.8%	98.8%
<i>State Subtotal</i>	<i>503</i>	<i>551.2</i>	<i>542.8</i>	<i>107.9%</i>	<i>107.9%</i>
<b>Contract Secure/Staff Supervised</b>					
Betty K. Marler Cntr.		38.4	30.5		
Brown Center		2.8	2.2		
Cedar Springs		9.6	13.4		
Childrens Ark		0.5	0.1		
El Pueblo Ranch		10.4	10.6		
Excelsior Youth Center		1.0	1.8		
Glen Mills Schools		1.0	1.0		
Griffith Centers for Children		17.3	18.2		
Hilltop West		8.5	8.5		
Jefferson Hills		105.1	103.4		
Kidz Ark		8.0	6.6		
Mountain Star Center		5.0	4.1		
Ridge View		427.4	432.2		
Robert DeNier		5.4	8.6		
Southern Peaks		25.5	32.8		
Turning Point Center		8.1	9.5		
<i>Contract Secure Subtotal</i>		<i>674.0</i>	<i>683.4</i>		

**State Secure Commitment  
Percent of Available Capacity by Facility**



# November 2005

## DYC Population Report

### III. Commitment Services Continued

#### B. Community/Other Residential APD by Facility

<u>Facility</u>	<u>November</u> <u>2005</u>	<u>YTD</u>
<b>Community</b>		
AYA Montrose	13.9	17.9
Boulder Community Treatment Center	0.3	0.9
COMCOR	2.4	3.6
Dale House	11.6	10.6
Daybreak Princeton	7.0	6.5
DAYS	7.7	8.5
Devereux Cleo Wallace	16.2	14.8
Gateway	1.9	1.6
Griffith Centers for Children	9.2	6.9
Hilltop Youth Services	1.7	2.6
Longmont Center	1.0	0.4
Lost and Found	5.4	7.2
Lyle Alzado Youth Home/PYSB Proctor	0.5	4.5
Miranda Place	2.0	3.1
Prairie View	1.0	2.5
Restitution Center	0.0	0.3
ROP	2.0	2.0
Synergy	6.0	5.6
Third Way	19.6	17.5
Turning Point	33.1	27.8
Youthtrack-Excel	15.0	14.6
Youthtrack-Jeffco	6.7	4.8
Youthtrack-San Luis Valley	2.6	2.5
Youthtrack-Work and Learn	6.8	8.2
Youth Ventures	6.2	5.1
<i>Community Subtotal</i>	<i>179.6</i>	<i>180.0</i>
<i>Private Contract Total</i>	<i>853.6</i>	<i>863.4</i>
<i>Other Residential*</i>	<i>21.5</i>	<i>17.7</i>
<b>RESIDENTIAL TOTAL</b>	<b>1,426.3</b>	<b>1,423.8</b>

\*Includes Group Homes, Job Corps, etc.

# November 2005 DYC Population Report

## IV. New Commitments

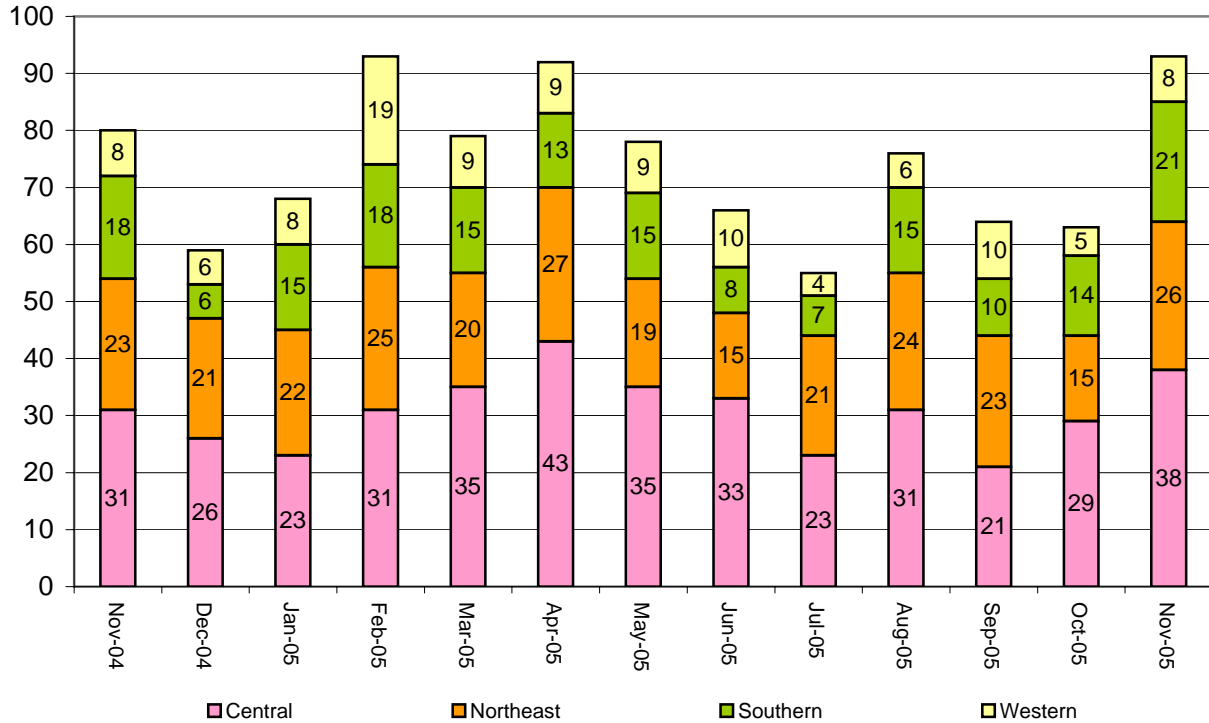
### New Commitments by Region

---

	<u>November 2005</u>	<u>YTD</u>	<u>November 2004</u>	<u>Last YTD</u>
Central Region	38	157	31	165
Northeast Region	26	116	23	104
Southern Region	21	71	18	76
Western Region	8	34	8	61
<b>New Commitment Total</b>	<b>93</b>	<b>378</b>	<b>80</b>	<b>406</b>

---

### Monthly New Commitments



# November 2005 DYC Population Report

## V. Parole Services

**Parole ADP by Region**

	<u>November 2005</u>	<u>YTD</u>	<u>Last YTD</u>
Central Region	209.4	207.2	199.6
Northeast Region	126.3	125.7	106.4
Southern Region	98.9	102.3	82.9
Western Region	73.8	75.2	65.2
<b>Parole Total</b>	<b>508.5</b>	<b>510.5</b>	<b>454.1</b>

**Parole Intakes**

**Parole Discharges**

**Parole LOS**

	<u>November 2005</u>		<u>November 2005</u>		<u>YTD</u>
	November 2005	YTD	November 2005	YTD	YTD
Central Region	35	175	30	158	6.3
Northeast Region	19	97	21	84	6.8
Southern Region	9	74	11	67	6.5
Western Region	5	53	12	39	7.7
Missing Region Data	3	4	0	0	
<b>Parole Total</b>	<b>71</b>	<b>403</b>	<b>74</b>	<b>348</b>	<b>6.6</b>

**Monthly Parole ADP**

