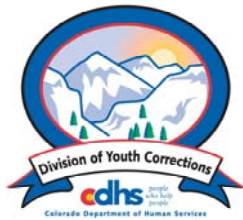


# OCTOBER 2005 MONTHLY POPULATION REPORT

---

Prepared by the Division of Youth Corrections Research and Evaluation Unit November 15, 2005



**Colorado Department of Human Services**  
**Division of Youth Corrections**

---

Working with Colorado Communities to Achieve Justice

# October 2005

## DYC Population Report

<b>I.</b>	<b>Summary Population Data</b>	<b>1</b>
<b>II.</b>	<b>Detention ADP by Facility</b>	<b>2</b>
<b>III.</b>	<b>Commitment Services</b>	
	A. State and Contract Secure ADP by Facility	<b>3</b>
	B. Community/Other Residential ADP by Facility	<b>4</b>
<b>IV.</b>	<b>New Commitments</b>	<b>5</b>
<b>V.</b>	<b>Parole Services</b>	<b>6</b>

# October 2005 DYC Population Report

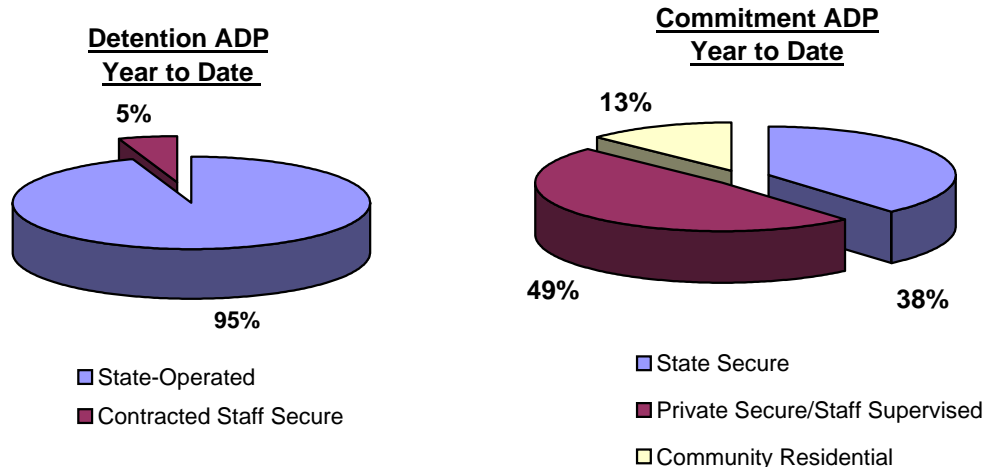
## I. Summary Population Data

<b>DETAINED YOUTH</b>	<b>Average Daily Population (ADP)</b>		<b>Length of Stay (LOS)</b>
	<b>October 2005</b>	<b>YTD</b>	<b>YTD</b>
State-Operated	403.4	394.7	13.2 days
Contracted Staff Secure	21.7	21.8	15.6 days
<b>Total Detained</b>	<b>425.1</b>	<b>416.5</b>	<b>13.3 days</b>

<b>COMMITTED YOUTH</b>	<b>Average Daily Population (ADP)</b>		<b>Length of Stay (LOS)</b>
	<b>October 2005</b>	<b>YTD</b>	<b>YTD</b>
State Secure	538.8	540.9	
Private Secure/Staff Supervised	678.1	684.5	
Community Residential	173.6	179.9	
Other Residential*	17.3	16.1	
<b>Total Committed Residential</b>	<b>1,407.7</b>	<b>1,421.3</b>	<b>18.9 months</b>
<i>Committed Residential w/o Boulder</i>	<i>1,400.3</i>	<i>1,414.7</i>	

<b>PAROLED YOUTH</b>	<b>Average Daily Population (ADP)</b>		<b>Length of Stay (LOS)</b>
	<b>October 2005</b>	<b>YTD</b>	<b>YTD</b>
<b>Total Paroled</b>	<b>528.3</b>	<b>513.2</b>	<b>6.7 months</b>

<b>TOTAL STATEWIDE ADP</b>	<b>2,361.1</b>	<b>2,351.0</b>
----------------------------	----------------	----------------

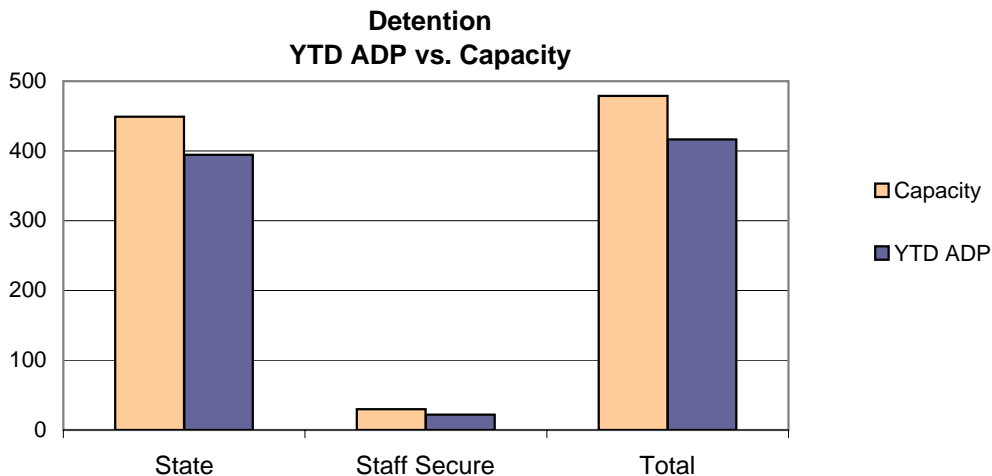


\*Other Residential Includes Group Homes, Job Corps, etc.

# October 2005 DYC Population Report

## II. Detention ADP by Facility

Facility	Average Daily Population				New Admissions		YTD LOS in Days	
	Operating Capacity	October 2005	YTD	YTD % of Capacity	YTD % Available Capacity	October 2005	YTD	LOS
<i>State Operated Detention</i>								
Adams YSC	28	23.6	22.8	81.5%	81.5%	47	212	11.8
Gilliam	70	66.7	65.4	93.4%	93.4%	122	530	13.8
Grand Mesa	24	21.7	21.3	88.9%	88.9%	42	179	12.0
Marvin Foote	96	85.0	84.3	87.9%	87.9%	163	610	15.7
Mount View	60	53.2	53.9	89.8%	89.8%	97	323	18.2
Platte Valley	69	61.4	63.5	92.0%	92.0%	149	660	11.3
Pueblo	36	33.2	31.3	86.9%	86.9%	55	249	14.4
Spring Creek	66	58.6	52.3	79.2%	79.2%	151	602	10.0
<i>State Subtotal</i>	<i>449</i>	<i>403.4</i>	<i>394.7</i>	<i>87.9%</i>	<i>87.9%</i>	<i>826</i>	<i>3,365</i>	<i>13.2</i>
<i>Staff Secure Detention</i>								
Brown Center	2	1.4	1.3	65.0%	65.0%	5	10	17.2
Emily Griffith	3	1.2	1.6	54.0%	54.0%	3	15	13.7
Hilltop West	3	2.7	2.8	93.3%	93.3%	4	13	16.0
Midway Remington	9	6.4	6.6	73.1%	73.1%	11	47	16.2
Prowers	1	1.0	0.8	75.0%	75.0%	1	4	21.1
Robert DeNier	9	6.8	6.5	71.8%	71.8%	8	46	16.9
Youthtrack San Luis Valley	3	2.2	2.3	77.3%	77.3%	10	22	10.6
<i>Staff Secure Total</i>	<i>30</i>	<i>21.7</i>	<i>21.8</i>	<i>72.8%</i>	<i>78.0%</i>	<i>42</i>	<i>157</i>	<i>15.6</i>
<b>TOTAL</b>	<b>479</b>	<b>425.1</b>	<b>416.5</b>	<b>87.0%</b>	<b>87.3%</b>	<b>868</b>	<b>3,522</b>	<b>13.3</b>



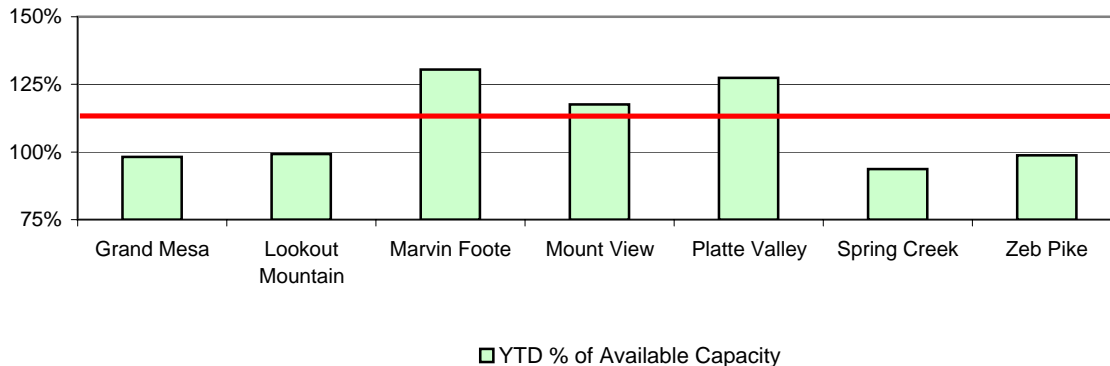
# October 2005 DYC Population Report

## III. Commitment Services

### A. State and Contract Secure ADP by Facility

Facility	<u>Operational Capacity</u>	<u>October 2005</u>	<u>YTD</u>	<u>YTD % of Capacity</u>	<u>YTD % of Available Capacity</u>
<b>State Secure</b>					
Adams	0	0.2	0.3	N/A	N/A
Gilliam	0	5.3	3.7	N/A	N/A
Grand Mesa	44	44.6	43.2	98.2%	98.2%
Lookout	214	210.4	212.4	99.3%	99.3%
Marvin Foote	22	26.8	28.7	130.5%	130.5%
Mount View	73	79.1	85.8	117.5%	117.5%
Platte Valley	66	84.8	84.1	127.4%	127.4%
Pueblo	0	3.7	1.9	N/A	N/A
Spring Creek	44	43.9	41.2	93.6%	93.6%
Zeb Pike	40	40.0	39.5	98.8%	98.8%
<i>State Subtotal</i>	<i>503</i>	<i>538.8</i>	<i>540.9</i>	<i>107.5%</i>	<i>107.5%</i>
<b>Contract Secure/Staff Supervised</b>					
Betty K. Marler Cntr.		35.1	28.5		
Brown Center		2.0	2.1		
Cedar Springs		10.4	14.3		
El Pueblo Ranch		9.6	10.6		
Excelsior Youth Center		1.8	1.9		
Glen Mills Schools		1.0	1.0		
Griffith Centers for Children		20.1	18.4		
Hilltop West		7.0	7.7		
Jefferson Hills		107.7	103.0		
Kidz Ark		7.2	6.2		
Mountain Star Center		5.0	3.9		
Ridge View		424.4	433.3		
Robert DeNier		8.0	9.0		
Southern Peaks		29.5	34.6		
Turning Point Center		9.4	9.9		
<i>Contract Secure Subtotal</i>		<i>678.1</i>	<i>684.5</i>		

**State Secure Commitment  
Percent of Available Capacity by Facility**



# October 2005

## DYC Population Report

### III. Commitment Services Continued

#### B. Community/Other Residential APD by Facility

<u>Facility</u>	<u>October</u> <u>2005</u>	<u>YTD</u>
<b>Community</b>		
AYA Montrose	15.2	18.9
Boulder Community Treatment Center	1.0	1.0
COMCOR	3.3	3.8
Community Correction (Mesa County)	0.0	0.0
Dale House	11.9	10.4
Daybreak Princeton	7.9	6.4
DAYS	8.0	8.7
Devereux Cleo Wallace	14.3	14.5
Gateway	1.5	1.5
Griffith Centers for Children	8.3	6.4
Hilltop Youth Services	2.5	2.9
Longmont Center	1.0	0.3
Lost and Found	5.3	7.7
Lyle Alzado Youth Home/PYSB Proctor	4.4	5.5
Miranda Place	2.8	3.4
Prairie View	1.3	2.9
Restitution Center	0.0	0.4
ROP	2.0	2.0
Synergy	5.5	5.5
Third Way	19.7	17.0
Turning Point	28.5	26.5
Youthtrack-Excel	13.9	14.5
Youthtrack-Jeffco	2.7	4.2
Youthtrack-San Luis Valley	2.1	2.5
Youthtrack-Work and Learn	7.9	8.6
Youth Ventures	2.8	4.8
<i>Community Subtotal</i>	<i>173.6</i>	<i>179.9</i>
<i>Private Contract Total</i>	<i>851.7</i>	<i>864.4</i>
<i>Other Residential*</i>	<i>17.3</i>	<i>16.1</i>
<b>RESIDENTIAL TOTAL</b>	<b>1,407.7</b>	<b>1,421.3</b>

\*Includes Group Homes, Job Corps, etc.

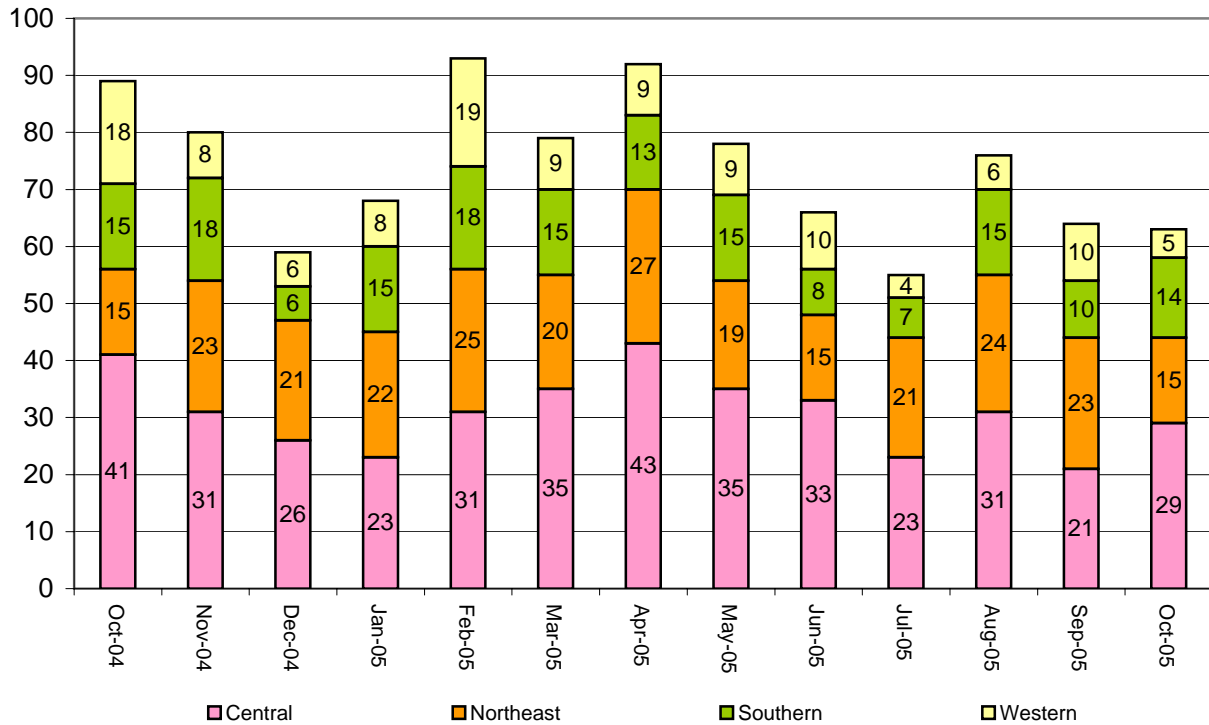
# October 2005 DYC Population Report

## IV. New Commitments

### New Commitments by Region

	<u>October 2005</u>	<u>YTD</u>	<u>October 2004</u>	<u>Last YTD</u>
Central Region	29	118	41	134
Northeast Region	15	90	15	81
Southern Region	14	50	15	58
Western Region	5	25	18	53
<b>New Commitment Total</b>	<b>63</b>	<b>283</b>	<b>89</b>	<b>326</b>

### Monthly New Commitments



# October 2005 DYC Population Report

## V. Parole Services

**Parole ADP by Region**

	<u>October 2005</u>	<u>YTD</u>	<u>Last YTD</u>
Central Region	208.4	207.0	202.6
Northeast Region	134.1	126.2	116.8
Southern Region	106.4	104.6	96.0
Western Region	79.3	75.3	73.8
<b>Parole Total</b>	<b>528.3</b>	<b>513.2</b>	<b>489.2</b>

**Parole Intakes**

**Parole Discharges**

**Parole LOS**

	<u>Parole Intakes</u>		<u>Parole Discharges</u>		<u>Parole LOS</u>
	<u>October 2005</u>	<u>YTD</u>	<u>October 2005</u>	<u>YTD</u>	<u>YTD</u>
Central Region	31	139	28	127	6.5
Northeast Region	19	78	19	62	6.9
Southern Region	9	67	17	55	6.2
Western Region	9	48	6	27	8.4
Missing Region Data	2	3	0	0	
<b>Parole Total</b>	<b>70</b>	<b>335</b>	<b>70</b>	<b>271</b>	<b>6.7</b>

**Monthly Parole ADP**

