

# SEPTEMBER 2005 MONTHLY POPULATION REPORT

---

Prepared by the Division of Youth Corrections Research and Evaluation Unit October 26, 2005



**Colorado Department of Human Services**  
**Division of Youth Corrections**

---

Working with Colorado Communities to Achieve Justice

# September 2005

## DYC Population Report

<b>I.</b>	<b>Summary Population Data</b>	<b>1</b>
<b>II.</b>	<b>Detention ADP by Facility</b>	<b>2</b>
<b>III.</b>	<b>Commitment Services</b>	
	A. State and Contract Secure ADP by Facility	<b>3</b>
	B. Community/Other Residential ADP by Facility	<b>4</b>
<b>IV.</b>	<b>New Commitments</b>	<b>5</b>
<b>V.</b>	<b>Parole Services</b>	<b>6</b>

# September 2005 DYC Population Report

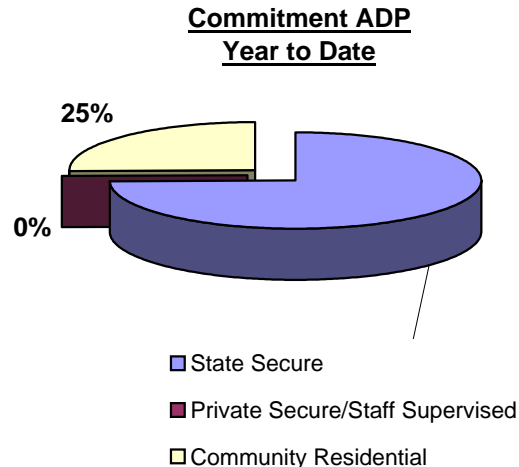
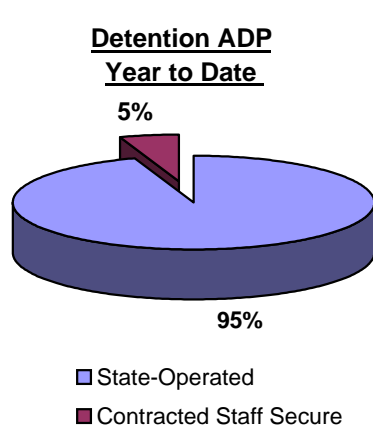
## I. Summary Population Data

DETAINED YOUTH	Average Daily Population (ADP)		Length of Stay (LOS)
	September 2005	YTD	YTD
State-Operated	394.5	389.8	12.8 days
Contracted Staff Secure	22.6	21.9	16.9 days
<b>Total Detained</b>	<b>417.1</b>	<b>411.7</b>	<b>13.0 days</b>

COMMITTED YOUTH	Average Daily Population (ADP)		Length of Stay (LOS)
	September 2005	YTD	YTD
State Secure	541.6	541.5	
Private Secure/Staff Supervised	0.0	0.0	
Community Residential	184.3	183.2	
Other Residential*	15.5	16.5	
<b>Total Committed Residential</b>	<b>741.4</b>	<b>741.2</b>	<b>19.0 months</b>
<i>Committed Residential w/o Boulder</i>	<i>735.7</i>	<i>735.4</i>	

PAROLED YOUTH	Average Daily Population (ADP)		Length of Stay (LOS)
	September 2005	YTD	YTD
<b>Total Paroled</b>	<b>520.1</b>	<b>504.8</b>	<b>6.9 months</b>

<b>TOTAL STATEWIDE ADP</b>	<b>1,678.6</b>	<b>1,657.6</b>
----------------------------	----------------	----------------



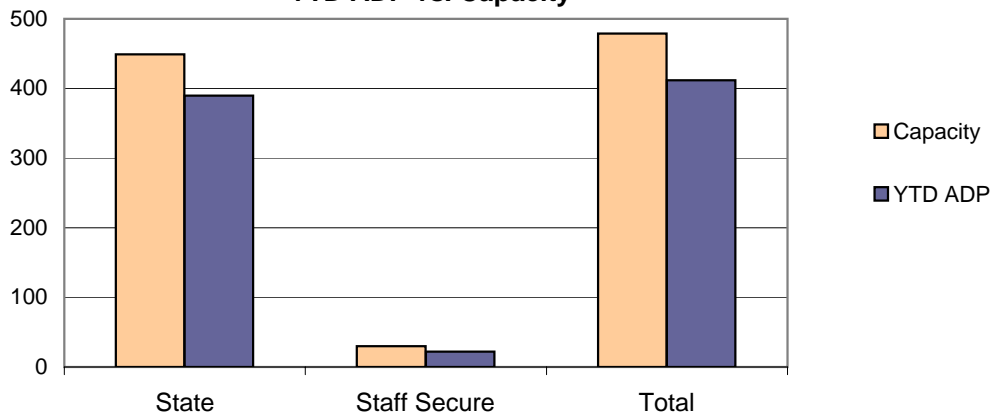
\*Other Residential Includes Group Homes, Job Corps, etc.

# September 2005 DYC Population Report

## II. Detention ADP by Facility

Facility	Average Daily Population				New Admissions		YTD LOS in Days	
	Operating Capacity	September 2005	YTD	YTD % of Capacity	September 2005	YTD	LOS	
<i>State Operated Detention</i>								
Adams YSC	28	20.1	22.5	80.5%	80.5%	47	165	11.6
Gilliam	70	65.7	64.1	91.5%	91.5%	138	408	12.9
Grand Mesa	24	20.6	21.1	88.0%	88.0%	47	136	11.2
Marvin Foote	96	88.7	84.2	87.7%	87.7%	140	447	15.9
Mount View	60	52.0	53.9	89.9%	89.9%	74	226	19.5
Platte Valley	69	63.3	63.9	92.6%	92.6%	163	511	10.7
Pueblo	36	29.1	30.4	84.4%	84.4%	63	194	12.6
Spring Creek	66	55.1	49.6	75.2%	75.2%	164	451	9.4
<i>State Subtotal</i>	<i>449</i>	<i>394.5</i>	<i>389.8</i>	<i>86.8%</i>	<i>86.8%</i>	<i>836</i>	<i>2,538</i>	<i>12.8</i>
<i>Staff Secure Detention</i>								
Brown Center	2	0.7	1.3	63.5%	63.5%	1	5	21.3
Emily Griffith	3	2.6	1.8	59.7%	59.7%	4	12	14.2
Hilltop West	3	2.9	2.8	94.0%	94.0%	5	9	18.4
Midway Remington	9	6.1	6.6	73.3%	73.3%	8	36	15.4
Prowers	1	0.7	0.7	68.0%	68.0%	0	3	21.1
Robert DeNier	9	7.3	6.4	71.0%	71.0%	16	38	17.6
Youthtrack San Luis Valley	3	2.2	2.3	78.0%	78.0%	3	12	17.1
<i>Staff Secure Total</i>	<i>30</i>	<i>22.6</i>	<i>21.9</i>	<i>73.0%</i>	<i>78.2%</i>	<i>37</i>	<i>115</i>	<i>16.9</i>
<b>TOTAL</b>	<b>479</b>	<b>417.1</b>	<b>411.7</b>	<b>85.9%</b>	<b>86.3%</b>	<b>873</b>	<b>2,653</b>	<b>13.0</b>

**Detention  
YTD ADP vs. Capacity**



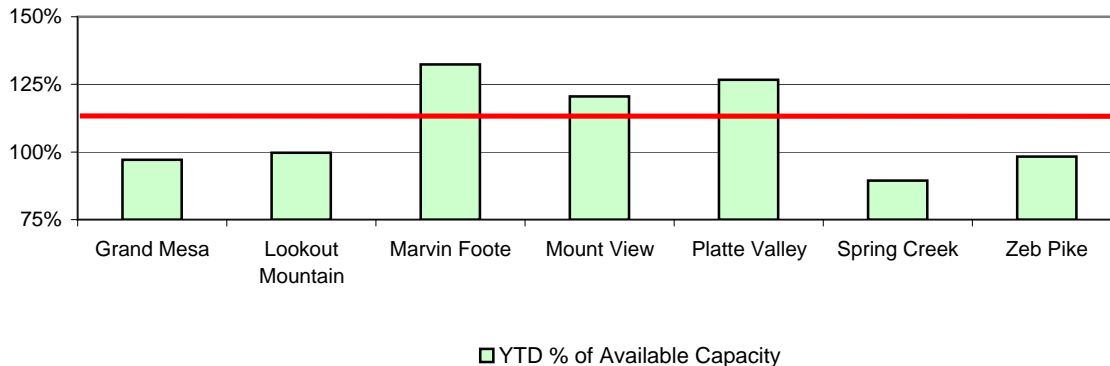
# September 2005 DYC Population Report

## III. Commitment Services

### A. State and Contract Secure ADP by Facility

Facility	<u>Operational Capacity</u>	<u>September 2005</u>	<u>YTD</u>	<u>YTD % of Capacity</u>	<u>YTD % of Available Capacity</u>
<b>State Secure</b>					
Adams	0	0.6	0.4	N/A	N/A
Gilliam	0	4.8	4.3	N/A	N/A
Grand Mesa	44	40.8	42.7	97.1%	97.1%
Lookout	214	212.2	213.3	99.7%	99.7%
Marvin Foote	22	29.6	29.1	132.4%	132.4%
Mount View	73	80.6	88.0	120.5%	120.5%
Platte Valley	66	91.0	83.6	126.7%	126.7%
Pueblo	0	1.2	1.5	N/A	N/A
Spring Creek	44	41.5	39.3	89.4%	89.4%
Zeb Pike	40	39.3	39.3	98.3%	98.3%
<i>State Subtotal</i>	<i>503</i>	<i>541.6</i>	<i>541.5</i>	<i>107.7%</i>	<i>107.7%</i>
<b>Contract Secure/Staff Supervised</b>					
Betty K. Marler Cntr.		29.2	26.0		
Brown Center		2.0	2.1		
Cedar Springs		13.6	15.7		
El Pueblo Ranch		11.0	11.0		
Excelsior Youth Center		2.0	2.0		
Glen Mills Schools		1.0	1.0		
Griffith Centers for Children		18.7	17.8		
Hilltop West		7.0	8.0		
Jefferson Hills		106.4	101.3		
Kidz Ark		6.0	5.9		
Mountain Star Center		4.3	3.5		
Ridge View		426.0	436.3		
Robert DeNier		10.0	9.3		
Southern Peaks		30.5	36.4		
Turning Point Center		8.72	10.03		
<i>Contract Secure Subtotal</i>		<i>676.3</i>	<i>686.2</i>		

**State Secure Commitment  
Percent of Available Capacity by Facility**



# September 2005

## DYC Population Report

### III. Commitment Services Continued

#### B. Community/Other Residential APD by Facility

<u>Facility</u>	<u>September</u> <u>2005</u>	<u>YTD</u>
<b>Community</b>		
AYA Montrose	20.3	20.1
Boulder Community Treatment Center	1.0	1.0
COMCOR	4.6	4.0
Community Correction (Mesa County)	0.0	0.0
Dale House	9.5	9.8
Daybreak Princeton	7.0	5.9
DAYS	9.1	8.9
Devereux Cleo Wallace	13.1	14.5
Gateway	2.0	2.1
Griffith Centers for Children	7.9	5.7
Hilltop Youth Services	3.6	3.0
Longmont Center	0.1	0.0
Lost and Found	7.7	8.5
Lyle Alzado Youth Home/PYSB Proctor	6.0	5.9
Miranda Place	2.8	3.6
Prairie View	3.3	3.5
Restitution Center	1.0	1.0
ROP	2.0	2.0
Synergy	6.6	5.6
Third Way	17.8	16.1
Turning Point	26.9	25.9
Youthtrack-Excel	13.5	14.8
Youthtrack -Grand	0.0	0.0
Youthtrack-Jeffco	4.3	4.7
Youthtrack-San Luis Valley	2.8	2.6
Youthtrack-Work and Learn	8.4	8.8
Youth Ventures	3.1	5.5
<i>Community Subtotal</i>	<i>184.3</i>	<i>183.2</i>
<i>Private Contract Total</i>	<i>184.3</i>	<i>183.2</i>
<i>Other Residential*</i>	<i>691.8</i>	<i>702.8</i>
<b>RESIDENTIAL TOTAL</b>	<b>1,417.7</b>	<b>1,427.4</b>

\*Includes Group Homes, Job Corps, etc.

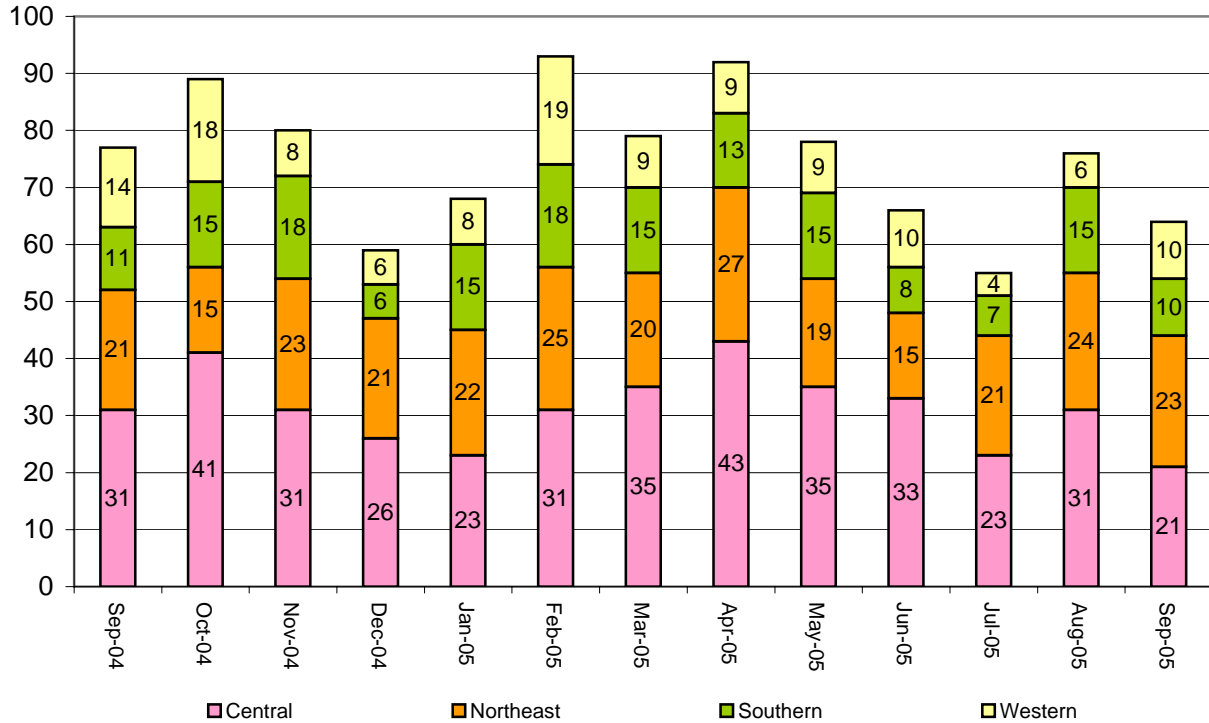
# September 2005 DYC Population Report

## IV. New Commitments

### New Commitments by Region

	<u>September 2005</u>	<u>YTD</u>	<u>September 2004</u>	<u>Last YTD</u>
Central Region	21	82	31	93
Northeast Region	23	70	21	66
Southern Region	10	33	11	43
Western Region	10	20	14	35
<b>New Commitment Total</b>	<b>64</b>	<b>205</b>	<b>77</b>	<b>237</b>

### Monthly New Commitments



# September 2005 DYC Population Report

## V. Parole Services

**Parole ADP by Region**

	<u>September 2005</u>	<u>YTD</u>	<u>Last YTD</u>
Central Region	203.4	204.5	192.4
Northeast Region	131.0	124.7	99.9
Southern Region	105.9	102.9	82.9
Western Region	79.8	72.7	65.2
<b>Parole Total</b>	<b>520.1</b>	<b>504.8</b>	<b>440.4</b>

	<b>Parole Intakes</b>		<b>Parole Discharges</b>		<b>Parole LOS</b>
	<u>September 2005</u>	<u>YTD</u>	<u>September 2005</u>	<u>YTD</u>	<u>YTD</u>
Central Region	39	107	36	98	6.7
Northeast Region	14	59	13	42	7.0
Southern Region	21	56	9	38	6.3
Western Region	9	38	8	21	9.0
Missing Region Data	1	1	0	0	
<b>Parole Total</b>	<b>84</b>	<b>261</b>	<b>66</b>	<b>199</b>	<b>6.9</b>

**Monthly Parole ADP**

