

Fiscal Year 2018 - 2019

Management Reference Manual



CO L O R A D O

Division of Youth Services

Office of Children, Youth & Families

January 2020

This manual provides the information most often requested on DYS client populations. Any questions concerning the data presented in this manual may be directed to Data Management and Analysis, Division of Youth Services, 4141 S. Julian Way, Denver, CO 80236, or Sally.Hill@state.co.us

Colorado Department of Human Services
Office of Children, Youth and Families
Division of Youth Services

January, 2020

<https://www.colorado.gov/cdhs/dys>



COLORADO
Division of Youth Services
Office of Children, Youth & Families
Anders Jacobson, Director

The Colorado Department of Human Services, Office of Children, Youth, and Families, Division of Youth Services (DYS) is pleased to release the Fiscal Year (FY) 2018-19 Management Reference Manual.

This manual is designed to answer many of the data inquiries that are commonly asked of the Division. The manual is arranged by youth population (i.e., *Colorado Youth Detention Continuum*, *Commitment*, and *Parole*) and provides annual trend data spanning several years. In addition to traditional demographic information, this manual attempts to provide a more comprehensive description of the youth served by the Division. Youth measures such as criminogenic risk, behavioral health treatment needs, and history of delinquency allow the Division to gain a better understanding of how evolving youth populations impact system measures such as *Length of Service* (LOS), *Average Daily Population* (ADP), and *Recidivism*. Please refer to the Terms and Definitions section in the pages that follow for working definitions of commonly used terms and acronyms.

As an overview, the Division continues to experience declines in most youth populations served. Detention ADP declined by 3.4% in FY 2018-19, a trend that has been observed in 12 of the previous 13 years. Commitment ADP also demonstrated a decline during FY 2018-19 (10.7%) compared to the previous Fiscal Year and represents the 13th straight year of decline for commitment. Parole ADP increased by 2.3%, ending an 8-year trend of decline.

Other important highlights include:

- Nearly 90% (88.5%) of newly committed girls demonstrated a need for treatment level substance use services and 87.8% demonstrated a need for formal mental health interventions compared to boys (83.4% and 60.4%, respectively).
- Over 7% of newly committed youth in FY 2018-19 were aggravated offenders, marking the second consecutive year of increase, and a notable increase from previous years which averaged between 2-3%.
- The recidivism rate for committed youth continues to be among the most rigorously evaluated in the nation, measuring recidivism for three years post-discharge. The Division's one-year recidivism rate is 34.4%, and remains close to the ten-year average of 30.9%.

Thank you for your interest in the Division of Youth Services. Additional information is available on the Division's website at <http://www.colorado.gov/cdhs/dys>

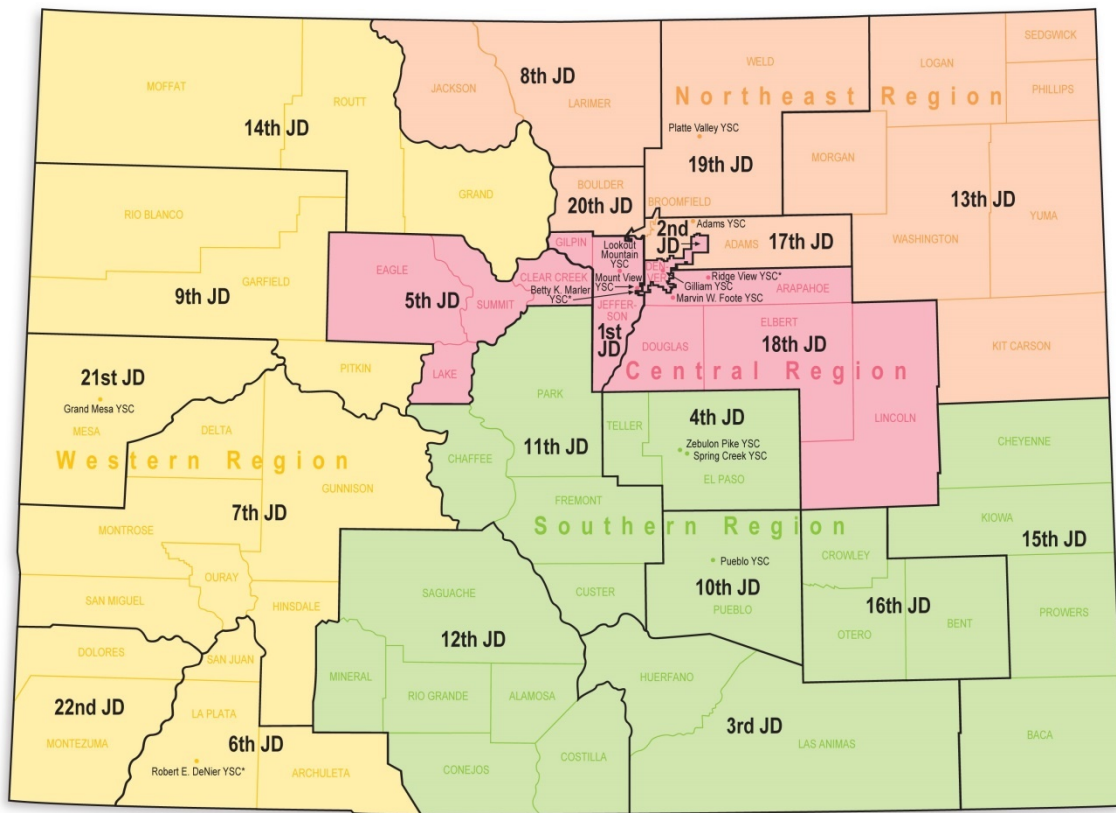
Sincerely,

Anders Jacobson
Director, Division of Youth Services



Department of Human Services
Office of Children, Youth and Families
Division of Youth Services
Statewide Map

Judicial Districts, Regions, and Youth Center Locations



*privately operated (state owned)

TABLE OF CONTENTS

Management Reference Manual

Fiscal Year 2018-19

Terms and Definitions	1
Section I: Colorado State Totals	
Filtering Process to Detention	6
Filtering Process to Commitment	7
All Clients Population Data	8
Section II: Colorado Youth Detention Continuum (CYDC or Senate Bill 91-94)	
Program Outcomes, ADP & JDSAG Results	9
Section III: Detention Population	
Detention Population Trends	10
Detention Average Maximum Bed Usage Trends	12
Detention Reason Detained Overview	13
Detention Population by Program	14
Detention Population Trends, ADP by Program	15
Detention Population Demographic Trends	16
Detention Admission Demographic Trends by Gender	18
Detention Admission Demographic Trends by Ethnicity	19
Detention Population Overview (CJRA, ADP, LOS-D) by Region & Judicial District	21
Detention Population Overview (Age) by Region & Judicial District	22
Section IV: Commitment Population	
Commitment Population Trends	23
New Commitment Trends by Previous Juvenile Justice Involvement	25
Commitment Population Trends by Program Type	26
Commitment Population, Clients Served & ADP by Program	27
Commitment Population Demographic Trends	29
New Commitment Trends by Sentence Type & Offense Type	30
New Commitment Demographic Trends by Gender	32
New Commitment Sentence Type and Offense Type by Gender	33
New Commitment Profile Trends by Gender	34
New Commitment Trends by Ethnicity	35
New Commitment Trends by Youth Acuity & Risk (CJRA)	39
New Commitment Trends by Co-Occurring Treatment Needs	40
Commitment Population ADP Trends & Special Populations	41
Commitment Population Length of Service (LOS-C) Trends	42
Commitment Overview by Region & Judicial District	43
Commitment Overview, Ethnicity by Region & Judicial District	44
Section V: Parole Population	
Parole Population Trends	45
Parole Population Demographic Trends	47
Section VI: Discharges	
Discharge Trends, Overall and by Age	48
Discharge Placement Trends	49
Parole Adjustment and Program Status at Discharge	50
Section VII: Regional Summaries	
Commitment Population Demographic Trends	51
Discharges by Placement, Program Status, Parole Adjustment & LOS	52
Discharge Trends by Program Status	54
Section VIII: Recidivism	
Recidivism Trends	55

Terms and Definitions

Disclaimer: *These definitions are provided for quick reference purposes only. Please refer to the Colorado Revised Statutes for more complete definitions of legal categories and conditions.*

Adjudication - The result of an adjudicatory hearing in which the court determines that it has been proven beyond a reasonable doubt that a juvenile has committed a delinquent act, or that a juvenile has pleaded guilty to committing a delinquent act.

Aggravated Offender (Sentence Type) - see *Sentencing Special Offenders*.

Assessment - Youth committed to DYS are assessed to determine a youth's classification and risk level, as well as needs for appropriate services, placement and program referral.

Average Daily Population (ADP) - The average number of youth present in a youth center or program during the reporting period.

Colorado Client Assessment Record (CCAR) - An assessment tool used to evaluate mental health treatment needs.

Colorado Juvenile Risk Assessment (CJRA) - An assessment tool used to determine risk of recidivism. The comprehensive, empirically validated risk assessment allows the Division to identify and respond to the criminogenic factors directly contributing to youth offending behavior.

Clients Served: Commitment & Parole - The total number of youth served in a particular program during the reporting period. Total clients served in a given category (e.g. secure or staff-supervised) represent unduplicated counts of clients served in those categories. Since youth can be served in more than one type of program over the course of a year, the total clients served in a particular category will not equal the sum of the clients served in each program.

Clients Served: Detention - The total number of youth served in a particular program during the reporting period. Total clients served in a youth center or program (e.g. Adams YSC) represents unduplicated counts of clients served in those youth centers. Since the same youth can have multiple admissions to detention and be served in more than one particular youth center over the course of a year, the total clients served in all youth centers will not equal the sum of the clients served in each youth center.

Commitment - Commitments are dispositions of juvenile cases resulting in the transfer of legal custody to the Department of Human Services by the court as a result of an adjudicatory hearing on charges of delinquent acts committed by the youth.

Commitment Sentence Type - Juveniles who have been adjudicated delinquent and committed to the Division of Youth Services can be given either non-mandatory or mandatory sentences. Mandatory sentences require that a youth spend a specified minimum amount of time in out-of-home placement and can include repeat and violent offenders. Juveniles can also be sentenced as aggravated offenders (Section 19-2-601, C.R.S.).

Colorado Youth Detention Continuum (CYDC)/SB91-94 - A bill enacted in 1991 to provide cost-effective community-based detention services to pre-adjudicated and sentenced youth. The program was designed to create options for community supervision of juvenile offenders awaiting court hearings and/or the disposition of their cases. Services include community-based screening and assessment to determine detention needs as well as community supervision strategies.

Community Residential Placement - DYS contracts with a number of private vendors to provide community-based programs to youth presenting the lowest risk of re-offending and youth transitioning from more secure programs.

Department of Corrections (DOC) - The principal department of the Colorado state government that operates the state adult prisons.

Detention - The custodial status of youth who are being confined or supervised after arrest or while awaiting the completion of judicial proceedings. Detention youth are served in secure state-operated or staff-secure (privately-operated) youth centers. Some detention youth are served in non-residential, community-based supervision programs.

Detention Admission - Each admission to detention for temporary custody of youth is tracked independently. In contrast to unduplicated counts of clients served in detention, one youth can have multiple admissions for a single incident. For example, if a youth is admitted to detention on a pretrial basis (preadjudicated) and released, a later sentencing to detention on the original charge would count as a separate admission, even though it is the same youth and the same incident/case. Likewise, if the youth serves the sentence on weekends, each weekend admission counts as a separate admission.

Detention Capacity Strain - Percentage of days where detention bed usage is at or above 90% of capacity.

Detention Maximum Bed Usage - Represents the maximum number of youth in detention at any given point during the reporting period.

Detention Screen - Refers to Colorado SB91-94 Juvenile Detention Screening and Assessment Guide (JDSAG), which is a screening guide designed to enhance consistency in the detention screening process.

Detention Sentence - The court-imposed sanction of confinement to a detention center as a disposition of a delinquency adjudication. Major sentence types include probation sentences, traffic sentences, handgun sentences, municipal sentences, game and fish sentences, contempt sentences, and non-probation sentences for a delinquent act.

Discharge - Time at which youth have completed their commitment and are no longer under the supervision and custody of the Division; most often directly following the completion of the parole period.

Interstate Compact on Juveniles (ICJ) - A cooperative program amongst states and jurisdictions that provides for the uniform interstate supervision of juveniles on probation or parole.

Length of Service: Commitment (LOS-C) - All commitment LOS figures are measured in months and are calculated for those discharged youth who spent time in the residential program for which LOS is reported (e.g., assessment, secure, staff secure, and community programs) prior to parole.

Length of Service: Commitment & Parole (LOS-C&P) - The average amount of time in DYS custody (sentence start date to discharge date, including parole time) for all youth discharged from DYS during the reporting period, not including escape time.

Length of Service: Parole (LOS-P) - The average amount of time spent on parole status. Parole LOS is measured in months and is based on discharged youth.

Length of Service: State Secure (LOS-SS) - The amount of time spent in a state secure commitment youth center during the reporting period. All commitment LOS figures are measured in months and are based on discharged youth.

Length of Stay: Detention (LOS-D) - The average amount of time spent in a detention youth center or program during the time period. All detention LOS figures are measured in days and are based on released youth.

Mandatory Sentence Offender (Sentence Type) - see *Sentencing Special Offenders*.

Municipal Sentence - Detention sentence imposed by a municipal court for violation of municipal ordinances.

New Commitment - Commitment of youth who were not previously committed, or who were previously committed but had been discharged from DYS.

Non-Mandatory Sentences (Sentence Type) - These sanctions involve no minimum out-of-home sentence length. The maximum sentence length cannot exceed 24 months. The Juvenile Parole Board determines release from commitment to parole status.

Other Residential - Placements include Job Corps, Group Homes, Hospitalization, etc.

Parole - The status of an offender conditionally released from a residential setting by discretion of the Juvenile Parole Board. Colorado juvenile offenders have a mandatory minimum parole length of 6 months. While on parole a youth is placed under the supervision of a parole officer and is required to observe conditions of release set by the parole officer and the Juvenile Parole Board.

Parole Revocation - The administrative action of the Juvenile Parole Board, which removes a youth from parole status in response to a violation of lawfully required conditions of parole, including the prohibition against commission of a new offense.

Parole Suspension - The administrative action of the Juvenile Parole Board, which removes a youth from parole status in response to a violation of lawfully required conditions of parole, including the prohibition against commission of a new offense. Reconsideration of parole must occur within 90 days on a date determined by the Juvenile Parole Board.

Parole Violation - Actions by a parolee that do not conform to the conditions of parole.

Preadjudicated - The legal status of youth pending delinquency adjudication decisions. Often these youth are referred to as pre-trial youth since they are generally admitted to detention pending some court action. This category also includes youth who are serving a sentence, such as probation, on a prior delinquency adjudication and who are in detention pending a new court action.

Prior Adjudications - Adjudications that occurred prior to the current detention or current commitment sentence.

Prior Out-of-home Placements - Placements in Social Services or DYS residential programs or other treatment programs prior to the current commitment sentence.

Recidivism - An adjudication or conviction for a new felony or misdemeanor offense that occurred within one, two, or three years following discharge from the Division of Youth Services.

Repeat Offender (Sentence Type) - see *Sentencing Special Offenders*.

Regional Management Structure - Decentralized DYS management structure comprised of four geographic regions in the state.

Residential Programs - Programs that provide 24-hour care.

Secure Residential Youth Center - A youth center with physical security features such as locked doors, sally-ports, and correctional fencing.

Sentencing Special Offenders (see Section 19-2-908, C.R.S.)

- a. **Mandatory Sentence Offender** - These sanctions specify a minimum time period of up to 24 months or less during which a youth must be in an out-of-home placement.
- b. **Repeat Offender** - A 'repeat' sentence type can be imposed on a juvenile who has been previously adjudicated a juvenile delinquent, and is adjudicated a juvenile delinquent for a delinquent act that constitutes a felony, or if his or her probation is revoked for a delinquent act that constitutes a felony. The court may or may not designate a minimum sentence length.
- c. **Violent Offender** - A juvenile may be sentenced as a violent offender if he or she is adjudicated a juvenile delinquent for a delinquent act that constitutes a crime of violence as defined in Section 16-11-309(2), Colorado Revised Statutes.
- d. **Aggravated Offender** - These sanctions specify a time period of three to seven years, during which time a youth must remain in the custody of the Department of Human Services. Contingent upon court approval, youth may be eligible for non-secure placement, parole, or transfer to the Department of Corrections (adult corrections).

Staff-Supervised Residential Program - Privately owned and operated, staff-supervised programs provide 24-hour line of sight supervision of youth.

State Owned / Privately Operated Programs - Detention or commitment programs which are administered by contract service providers in DYS owned youth centers.

State Owned / State Operated Programs - Detention or commitment programs which are administered by DYS employees in DYS owned youth centers.

Violent Offender (Sentence Type) - see *Sentencing Special Offenders*.

Youthful Offender System (YOS) - a maximum security prison in Pueblo, Colorado, that houses male and female offenders between ages 14–25. Inmates at YOS have all been convicted of a felony (for crimes committed when youth were between 14 – 19 years old) and sentenced as adults (prior to their 21st birthday) through the state's Department of Corrections system.

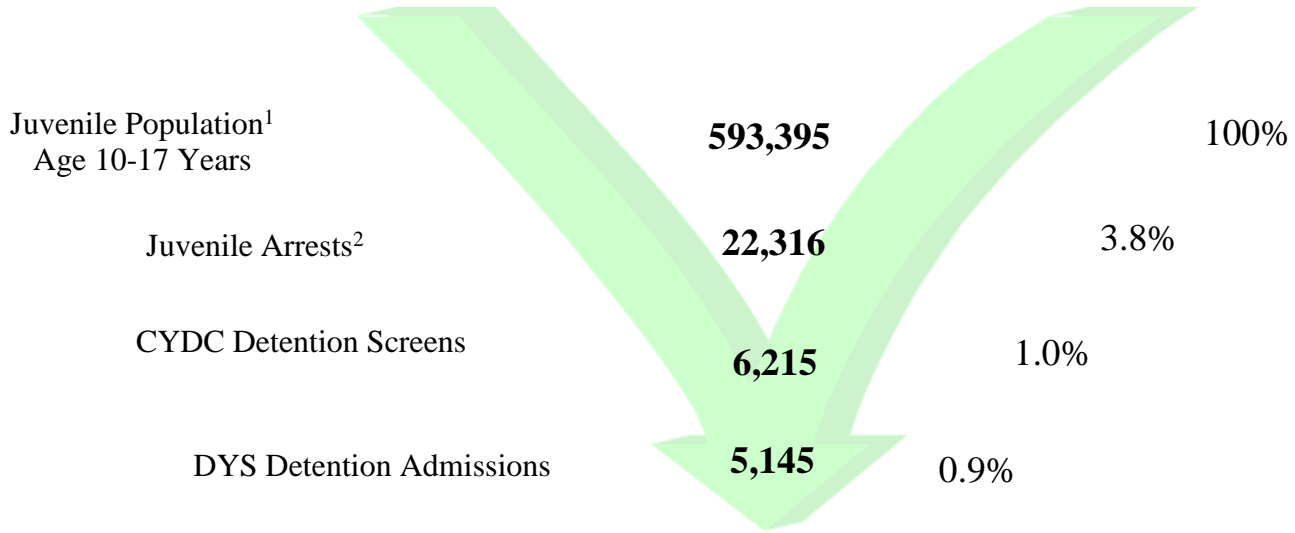
YTD - Year to Date

Page Intentionally Left Blank

COLORADO STATE TOTALS

Fiscal Year 2018-19

Juvenile Justice Filtering Process to Detention



	FY 2014-15	FY 2015-16	FY 2016-17	FY 2017-18	FY 2018-19
Age 10-17 population ¹	577,760	588,083	602,944	613,693	593,395
Juvenile Arrests ²	28,694	27,370	24,871	25,164	22,316
Arrests as % of population	5.0%	4.7%	4.1%	4.1%	3.8%
CYDC Detention Screens	8,018	7,595	7,342	6,853	6,215
Detention Admissions	7,024	6,510	5,980	5,591	5,145
Admissions as % of Population	1.2%	1.1%	1.0%	0.9%	0.9%

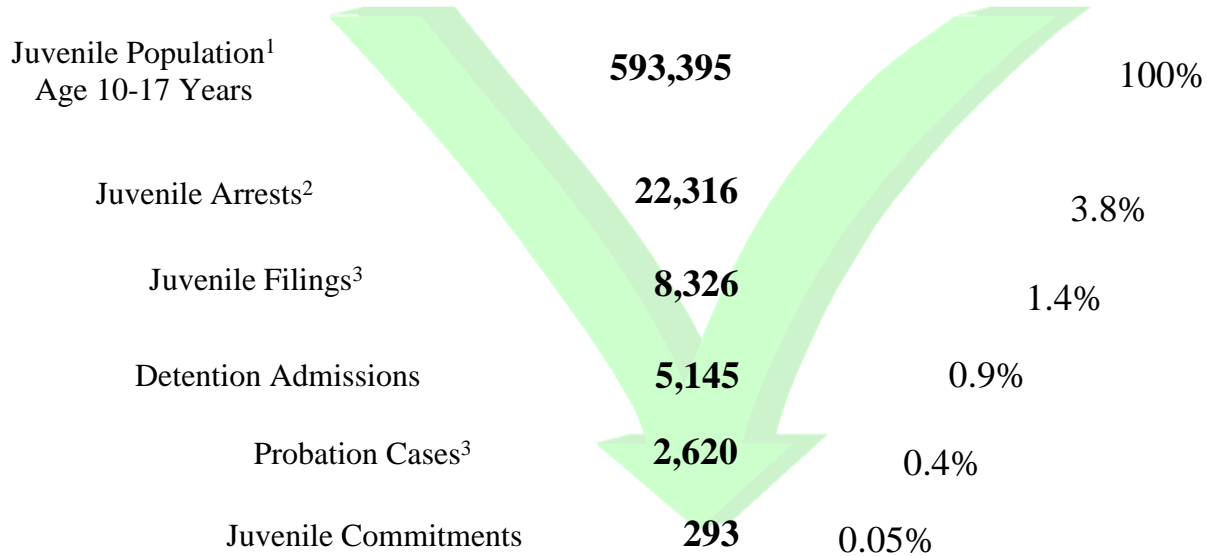
¹Colorado State Department of Local Affairs. Population data are reported for calendar years and based upon the 2010 census. (<http://www.dola.state.co.us/cedis.html>).

²Colorado Bureau of Investigations; Colorado Statewide - National Incident-Based Reporting System (NIBRS) Agency Crime Overview 2018; retrieved July 2019.

COLORADO STATE TOTALS

Fiscal Year 2018-19

Juvenile Justice Filtering Process to Commitment



	FY 2014-15	FY 2015-16	FY 2016-17	FY 2017-18	FY 2018-19
Age 10-17 Population ¹	577,760	588,083	602,944	613,693	593,395
Juvenile Arrests ²	28,694	27,370	24,871	25,164	22,316
Arrests as % of population	5.0%	4.7%	4.1%	4.1%	3.8%
Juvenile Delinquency Filings ³	8,786	8,604	8,337	8,313	8,326
Juvenile Detention Admissions	7,024	6,510	5,980	5,591	5,145
Number of New Probation Cases (reg. & ISP) ³	3,462	3,339	3,056	2,877	2,620
Number of New Commitments	410	387	381	400	293
Commitments as % of Population	0.1%	0.1%	0.1%	0.1%	0.05%

¹Colorado State Department of Local Affairs. Population data are reported for calendar years and based upon the 2010 census. (<http://www.dola.state.co.us/cedis.html>).

²Colorado Bureau of Investigations; Colorado Statewide - National Incident-Based Reporting System (NIBRS) Agency Crime Overview 2018; retrieved August 2019.

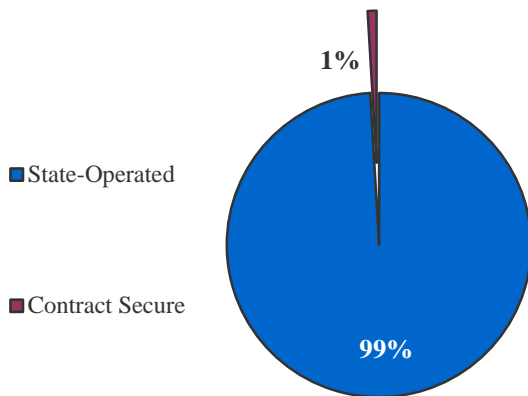
³Colorado Judicial Branch FY 2019 Annual Statistical Report.

ALL CLIENTS POPULATION DATA

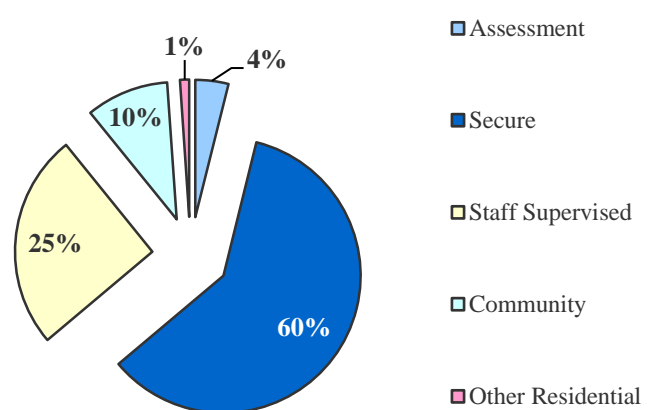
Fiscal Year 2018-19

DETAINED YOUTH	<i>Unique Clients Served¹</i>	New Admissions ²	ADP	LOS-D
State-Operated	3,115	5,096	251.5	17.8 days
Contract Secure	38	49	2.4	17.5 days
<i>Unique Client Count</i>	3,137	Total 5,145	253.9	17.8 days
COMMITTED YOUTH		New Commitments ²	ADP	LOS-C
Assessment	318		22.4	0.9 month
Secure	812		346.3	12.1 months
Staff Supervised	442		146.4	5.7 months
Community	182		56.2	1.7 months
Other Residential ³	38		6.3	0.1 month
<i>Unique Client Count</i>	1,171	Total 293	577.6	19.6 months
PAROLED YOUTH		New Intakes ²	ADP	LOS-P
<i>Unique Client Count</i>	594	Total 364	214.5	7.0 months
ALL YOUTH			ADP	LOS-C&P
<i>Unique Client Count</i>	4,324	Total	1,046.0	27.1 months

Detention ADP
FY 2018-19



Commitment ADP
FY 2018-19



¹Unique Clients Served is an unduplicated count of youth. These counts are not a sum of individual program areas, as youth are often served in multiple program areas (e.g.: assessment and secure) throughout the fiscal year.

²Individual youth (unique clients) can have multiple detention admissions, new commitments, and new parole intakes throughout the fiscal year.

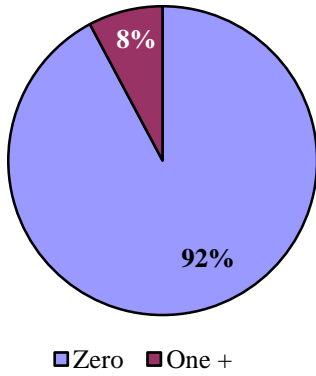
³Other Residential includes Group Homes, Job Corps, Hospitalizations, Shelter Care, etc.

COLORADO YOUTH DETENTION CONTINUUM (CYDC or SB 91-94) PROGRAM OUTCOMES, ADP & JDSAG OVERVIEW

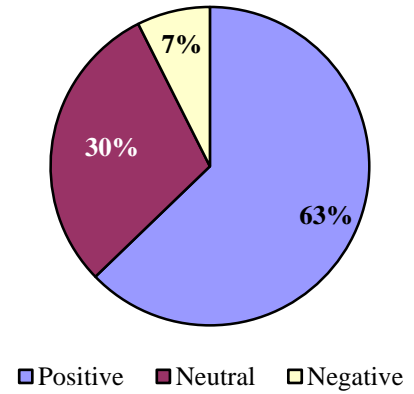
Fiscal Year 2018-19

CYDC OUTCOMES

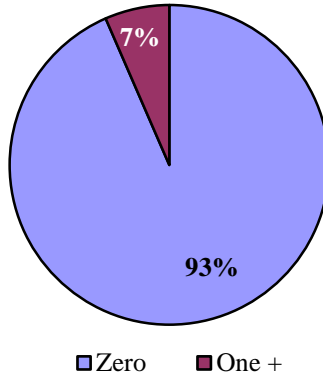
New Charges



Leave Reason

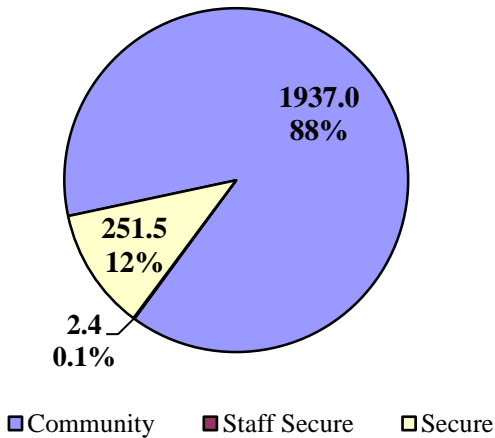


Failure To Appear (FTA)



CYDC ADP JDSAG¹ Results

ADP Breakdown



Actual Placement

Secure	81.6%
Staff Secure	0.8%
Residential/Shelter	0.5%
Home w/ Services	8.7%
Release	8.4%
TOTAL	100.0%

¹Juvenile Detention Screening and Assessment Guide is required for each detention admission.

DETENTION POPULATION TRENDS

10 Year Detention Trends

Fiscal Year	Clients Served ¹	Percentage Change +/-	New Admits	Percentage Change +/-	ADP	Percentage Change +/-	LOS-D (days)	Percentage Change +/-
2009-10	5,765	-10.0%	9,102	-11.6%	363.1	-8.9%	14.2	2.0%
2010-11	5,226	-9.3%	8,435	-7.3%	352.6	-2.9%	15.3	8.0%
2011-12	4,766	-8.8%	7,751	-8.1%	316.8	-10.2%	14.7	-4.2%
2012-13	4,401	-7.7%	7,324	-5.5%	307.6	-2.9%	15.1	3.3%
2013-14	4,013	-8.8%	6,783	-7.4%	290.6	-5.5%	15.4	1.8%
2014-15	4,012	-0.02%	7,024	3.6%	281.8	-3.0%	14.6	-5.3%
2015-16	3,808	-5.1%	6,510	-7.3%	275.0	-2.4%	15.4	5.5%
2016-17	3,521	-7.5%	5,980	-8.1%	257.1	-6.5%	15.3	-0.9%
2017-18	3,283	-6.8%	5,591	-6.5%	262.8	2.2%	16.6	9.0%
2018-19	3,137	-4.4%	5,145	-8.0%	253.9	-3.4%	17.8	7.1%

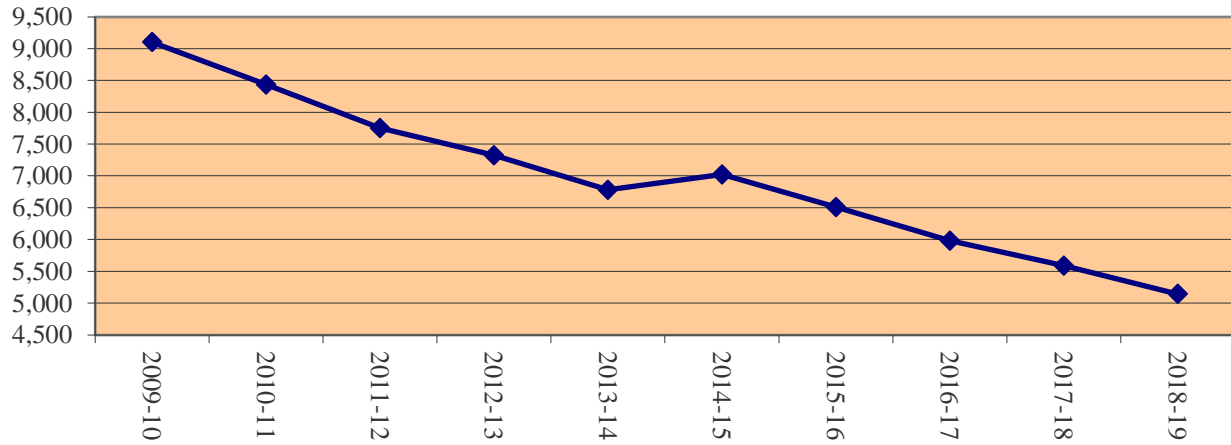
Fiscal Year 2018-19 was the sixth full year of detention operation under the new statewide cap of 382 youth that went into effect on April 1, 2013. FY 2018-19 experienced a 3.4% decrease in Detention ADP from the previous year, demonstrating a trend of decline over 12 of the past 13 years. The average length of stay (LOS-D) for youth in detention increased to 17.8 days. The number of clients served continued a 17-year trend of decline, with a decline of 4.4% from FY 2017-18. The number of new admissions decreased by 8% in FY 2018-19, continuing an 11-year decline. Ninety-nine percent (99%) of newly detained youth were held in state-operated youth centers, while only 1% of this year's new admissions were detained in a contracted secure or staff-secure youth center.

¹Clients served counts are unduplicated.

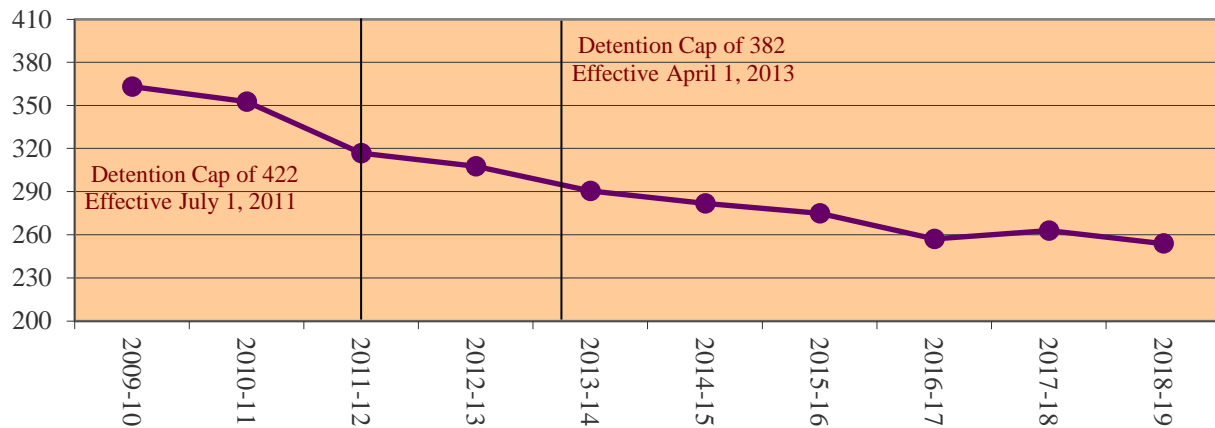
DETENTION POPULATION TRENDS

FY 2009-10 Through FY 2018-19

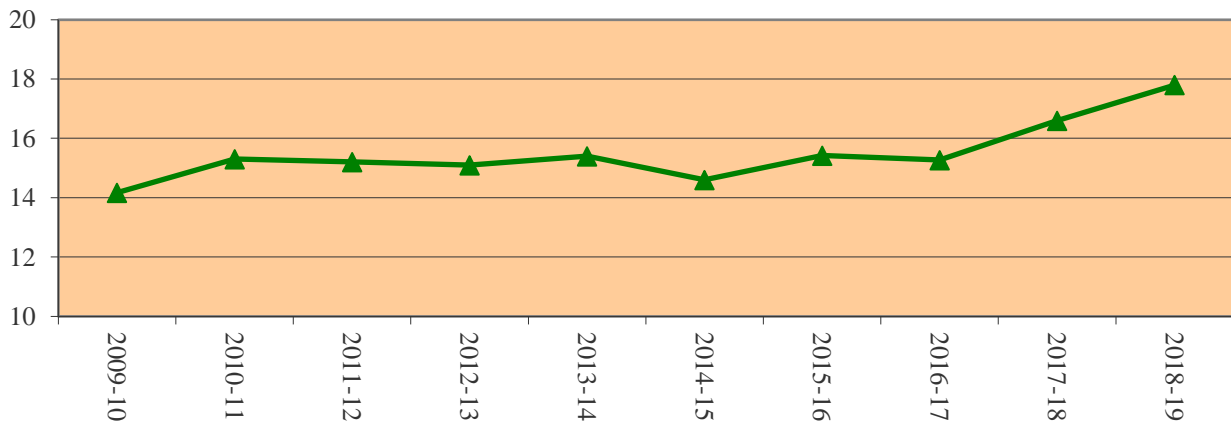
Trends in Detention Admissions



Trends in Detention ADP



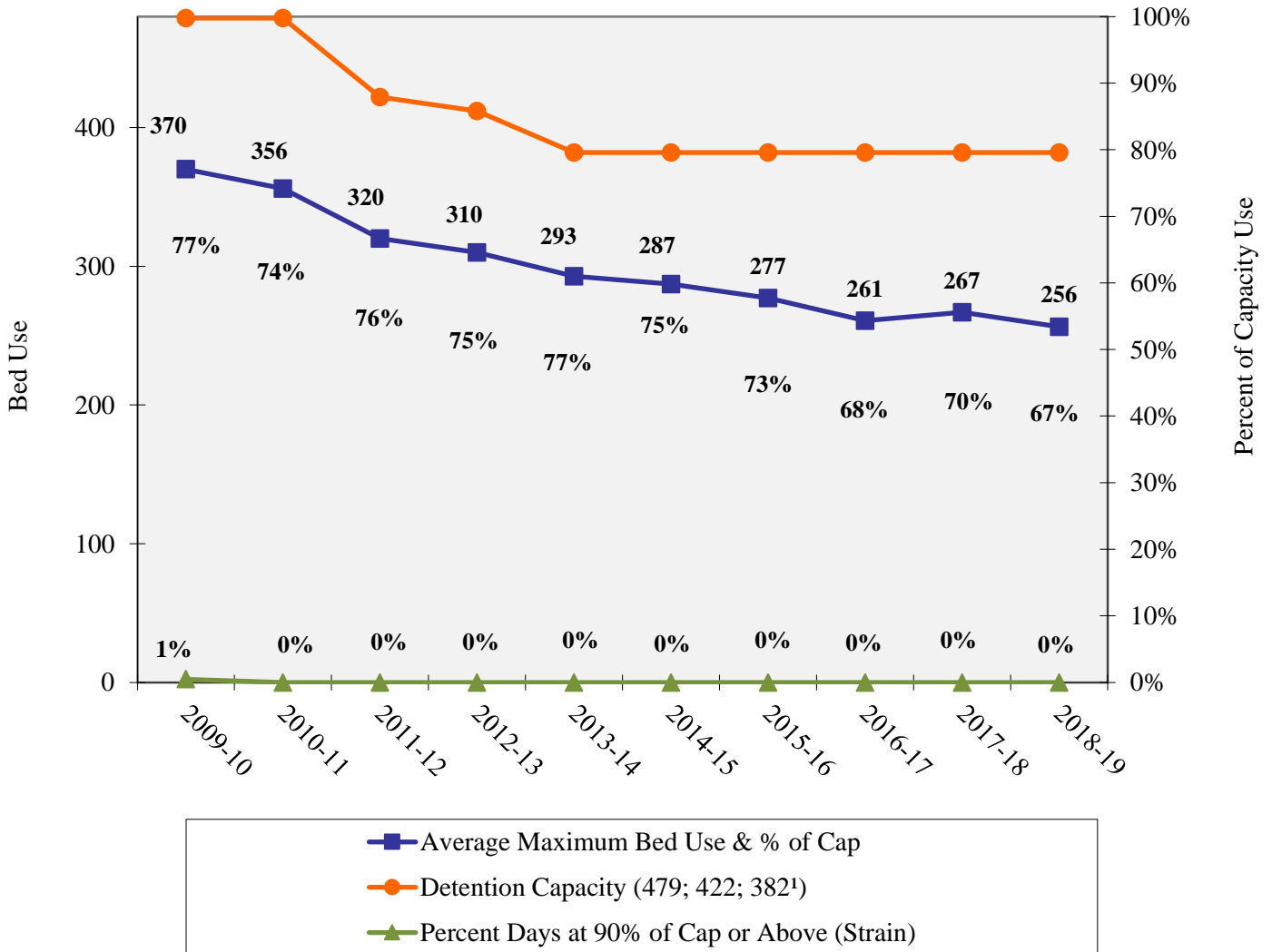
Trends in Detention LOS-D (days)



DETENTION POPULATION TRENDS

FY 2009-10 Through FY 2018-19

AVERAGE MAXIMUM BED USAGE AND CAPACITY STRAIN TRENDS



Maximum Bed Usage represents the maximum number of youth in detention at any given point during the day. The graph above illustrates that during FY 2018-19, on average, the state was operating at a maximum daily count of 256 youth. This represents 67% of the capacity limit (382). In FY 2009-10, this figure reached 77% of capacity with an average maximum of 370 youth in detention on any given day (with a capacity of 479).

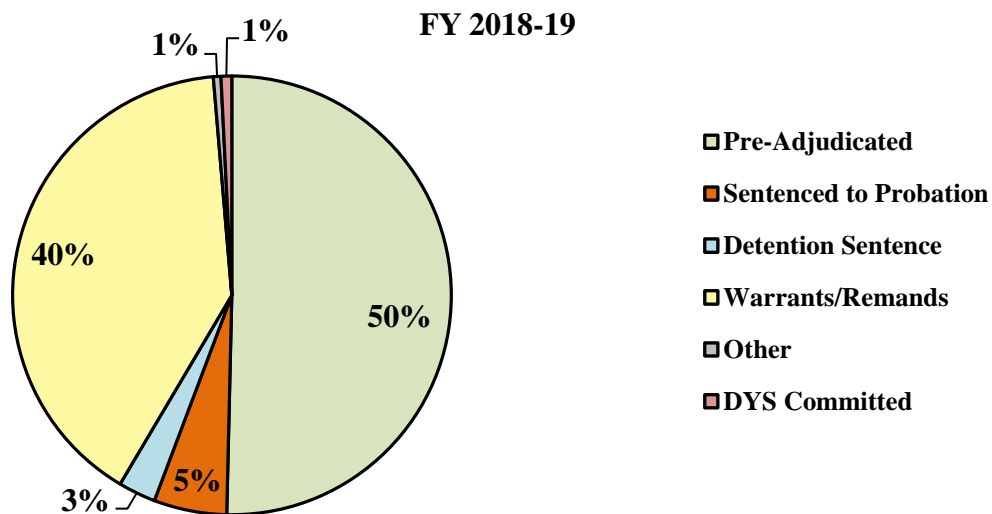
The percent of days when maximum beds used was at or above 90% of the statewide capacity is used as a measure of statewide capacity "strain" involved in managing the daily use of detention beds. For the ninth year in a row, DYS *did not* operate at 90% of capacity (or above) on any day in FY 2018-19. This is the 13th consecutive year of declining strain, after peaking 14 years prior in FY 2005-06, when the Division operated at or above 90% of the 479 capacity 66% of the time.

¹Effective April 1, 2013.

DETENTION REASON DETAINED OVERVIEW

FY 2017-18 Through FY 2018-19¹

	2017-18	2018-19
1) Pre-Adjudicated	44.9%	50.4%
Felony	31.8%	36.9%
Misdemeanor	13.2%	13.5%
2) Sentenced to Probation	8.3%	5.4%
Technical Violator	7.5%	4.7%
New Charges	0.8%	0.7%
3) Detention Sentence	4.5%	2.8%
Probation Sentence	0.0%	0.0%
Detention Sentence	3.4%	2.4%
Valid Court Order (VCO) Truancy	0.2%	0.0%
Awaiting DSS (Social Services) Placement	0.9%	0.3%
4) Warrants/Remands	41.0%	40.1%
Failure To Appear (FTA)	9.6%	8.6%
Failure To Comply (FTC)	31.3%	31.5%
5) Other	0.5%	0.6%
Interstate Compact on Juveniles (ICJ) Hold	0.5%	0.6%
Immigration Hold	0.0%	0.0%
No Bond Hold	0.0%	0.0%
Out-of-County Warrant	0.0%	0.0%
6) DYS Committed	0.8%	0.8%
Institutional	0.7%	0.7%
Parole	0.2%	0.1%



¹Based on New Detention Admissions; excludes missing data. Totals may not sum to 100.0% due to rounding.

DETENTION POPULATION BY PROGRAM

Fiscal Year 2018-19

	Operating Capacity	Clients Served ¹	New Admits	ADP	LOS-D (days)
<i>State Operated</i>					
Adams YSC	30	395	521	22.5	15.9
Gilliam YSC	64	619	809	41.5	17.1
Grand Mesa YSC	30	227	360	19.8	18.7
Marvin W. Foote YSC	62	688	940	44.3	16.6
Mount View YSC	41	355	468	21.5	17.6
Platte Valley YSC	64	602	921	40.2	15.6
Pueblo YSC	35	260	355	15.5	16.4
Spring Creek YSC	52	505	722	46.3	24.7
<i>Subtotal State Operated</i>	<i>378</i>	<i>3,115</i>	<i>5,096</i>	<i>251.5</i>	<i>17.8</i>
<i>Privately Operated</i>					
Robert DeNier	0	9	7	0.3	15.4
Sage Detention ²	4	29	42	2.1	18.0
<i>Subtotal Privately Operated</i>	<i>4</i>	<i>38</i>	<i>49</i>	<i>2.4</i>	<i>17.5</i>
STATEWIDE TOTAL	382	3,137	5,145	253.9	17.8

¹ Clients Served is an unduplicated count. Categorical totals are not a sum of individual program Clients Served.

² Formerly known as Youthtrack San Luis Valley.

DETENTION POPULATION TRENDS
ADP BY PROGRAM

	FY 2014-15	FY 2015-16	FY 2016-17	FY 2017-18	FY 2018-19
<i>State Operated</i>					
Adams YSC	22.0	24.6	21.8	22.6	22.5
Gilliam YSC	53.4	54.3	44.6	41.6	41.5
Grand Mesa YSC	17.2	19.6	17.8	20.7	19.8
Marvin Foote YSC	47.3	39.8	39.4	39.9	44.3
Mount View YSC	29.0	27.2	25.6	30.4	21.5
Platte Valley YSC	50.9	43.7	39.0	37.4	40.2
Pueblo YSC	18.3	18.8	18.3	16.9	15.5
Spring Creek YSC	37.0	41.6	45.7	46.6	46.3
<i>Subtotal State Operated</i>	<i>275.0</i>	<i>269.6</i>	<i>252.1</i>	<i>256.0</i>	<i>251.5</i>
<i>Privately Operated</i>					
Brown Center	1.5	1.1	0.4	0.0	0.0
Robert DeNier	4.0	2.3	2.8	4.9	0.3
Youthtrack Alamosa (SLV ¹)	1.3	1.9	1.8	N/A	N/A
Sage Detention	N/A	N/A	N/A	1.9	2.1
<i>Subtotal Privately Operated</i>	<i>6.8</i>	<i>5.3</i>	<i>5.1</i>	<i>6.8</i>	<i>2.4</i>
STATEWIDE DETENTION	281.8	275.0	257.1	262.8	253.9

¹ San Luis Valley; Changed to Sage Detention in FY 2017-18.

DETENTION POPULATION DEMOGRAPHIC TRENDS

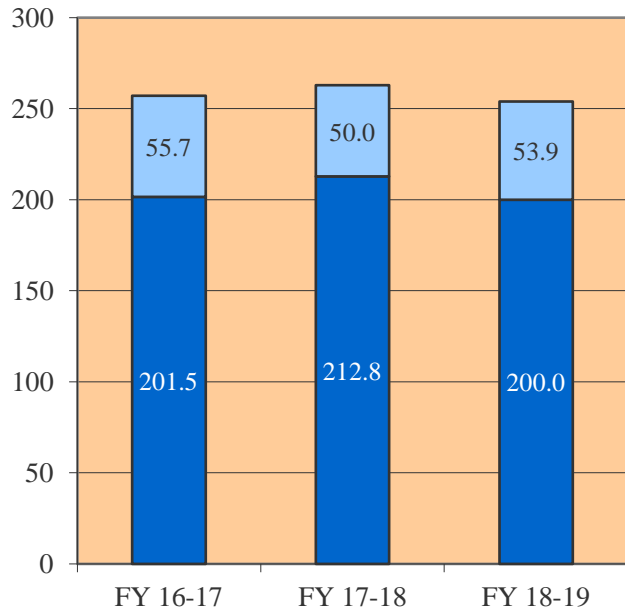
	FY 2016-17				FY 2017-18				FY 2018-19			
	New Admits	%	ADP	LOS-D (days)	New Admits	%	ADP	LOS-D (days)	New Admits	%	ADP	LOS-D (days)
GENDER												
Male	4,461	74.6%	201.5	16.0	4,337	77.6%	212.8	17.1	3,897	75.7%	200.0	18.8
Female	1,519	25.4%	55.7	13.1	1,254	22.4%	50.0	14.9	1,248	24.3%	53.9	14.8
TOTAL	5,980	100%	257.1	15.3	5,591	100%	262.8	16.6	5,145	100%	253.9	17.8
ETHNICITY												
Anglo-American	2,412	40.3%	99.5	14.4	2,301	41.2%	100.4	15.7	1,980	38.5%	90.5	16.7
African-American	1,139	19.0%	55.3	17.5	1,115	19.9%	65.5	19.7	991	19.3%	55.1	21.6
Hispanic/Latino	2,267	37.9%	95.7	15.1	1,993	35.6%	88.9	16.0	1,936	37.6%	97.6	17.6
Native American	60	1.0%	2.8	15.3	62	1.1%	3.8	22.7	58	1.1%	2.5	12.7
Asian-American	30	0.5%	1.2	14.3	35	0.6%	1.4	15.5	72	1.4%	4.3	12.4
Other ¹	72	1.2%	2.7	14.9	85	1.5%	2.8	11.9	108	2.1%	3.9	12.6
AGE												
10 Years	20	0.3%	0.8	11.8	9	0.2%	0.4	19.8	10	0.2%	0.5	16.5
11 Years	37	0.6%	1.3	12.9	22	0.4%	0.4	6.6	15	0.3%	0.3	5.7
12 Years	113	1.9%	3.7	11.9	58	1.0%	1.9	11.7	88	1.7%	3.3	13.9
13 Years	338	5.7%	12.3	13.5	296	5.3%	12.7	14.0	248	4.8%	11.7	18.9
14 Years	802	13.4%	32.7	14.7	738	13.2%	29.7	14.3	741	14.4%	29.6	14.4
15 Years	1,326	22.2%	56.6	15.0	1,225	21.9%	58.1	16.5	1,056	20.5%	53.2	18.2
16 Years	1,642	27.5%	80.4	16.6	1,555	27.8%	84.8	19.4	1,429	27.8%	81.0	20.7
17 Years	1,695	28.3%	69.2	15.2	1,676	30.0%	74.5	16.0	1,554	30.2%	74.3	16.7
18 Years	6	0.1%	0.0	1.0	6	0.1%	0.0	2.4	1	0.0%	0.0	1.4
19 Years +	1	0.0%	0.1	36.0	6	0.1%	0.2	9.9	3	0.1%	0.2	21.7
Average Age at Admission	16.0 Years				16.1 Years				16.1 Years			
Prior Admissions												
None	1,987	33.2%	56.2	9.6	1,866	33.4%	57.9	11.2	1,861	36.2%	56.3	11.3
One	1,051	17.6%	39.7	13.4	998	17.9%	43.4	14.8	947	18.4%	41.5	16.5
Two or more	2,942	49.2%	161.2	19.7	2,727	48.8%	161.5	21.0	2,337	45.4%	156.0	23.6
Program Type												
State Operated	5,863	98.0%	252.1	15.3	5,485	98.1%	256.0	16.5	5,096	99.0%	251.5	17.8
Privately Operated	117	2.0%	5.1	14.7	106	1.9%	6.8	23.8	49	1.0%	2.4	17.5

¹"Other" ethnicities include Native Hawaiian or Other Pacific Islander and Unable to Determine throughout this report.

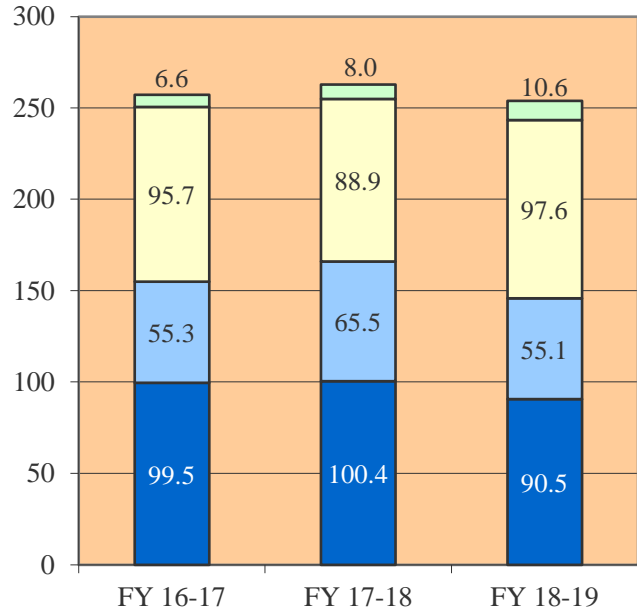
DETENTION POPULATION

DEMOGRAPHIC TRENDS

Detention ADP by Gender



Detention ADP by Ethnicity

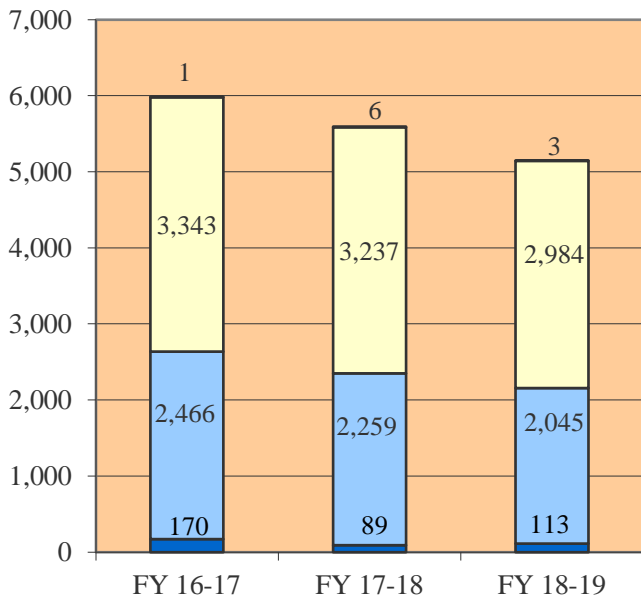


Female Male

Anglo African-American
Hispanic/Latino Other*

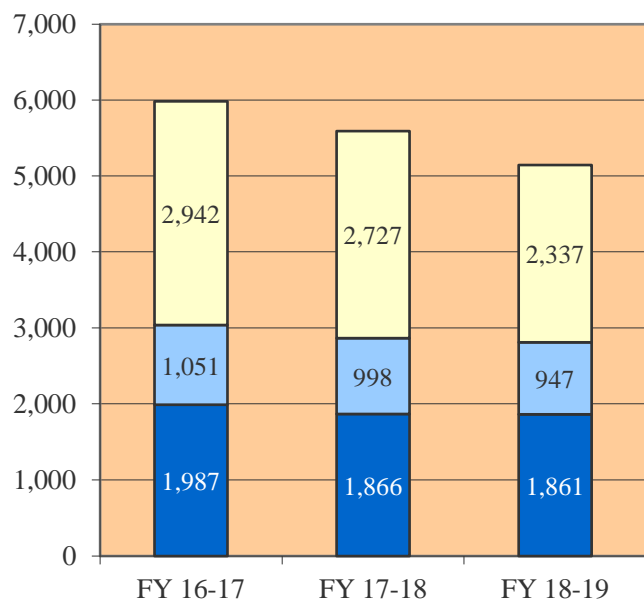
**Other includes Native American, Asian American, etc.*

Detention Admissions by Age at Admission



10-12 Years 13-15 Years
16-18 Years 19-21 Years

Detention Admissions by Number of Prior Admissions

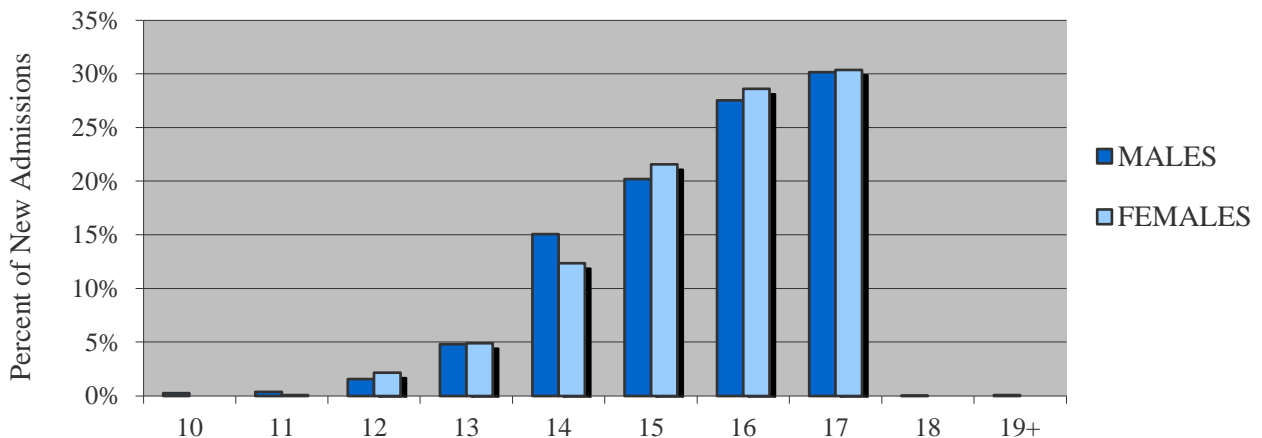


None One Two or more

NEW DETENTION ADMISSIONS DEMOGRAPHIC TRENDS BY GENDER

	MALES						FEMALES					
	FY 2016-17		FY 2017-18		FY 2018-19		FY 2016-17		FY 2017-18		FY 2018-19	
	N	%	N	%	N	%	N	%	N	%	N	%
DEMOGRAPHIC DATA												
Ethnicity												
Anglo-American	1,758	39.4%	1,740	40.1%	1,429	36.7%	654	43.1%	561	44.7%	551	44.2%
African-American	919	20.6%	902	20.8%	786	20.2%	220	14.5%	213	17.0%	205	16.4%
Hispanic/Latino	1,677	37.6%	1,571	36.2%	1,516	38.9%	590	38.8%	422	33.7%	420	33.7%
Native American	36	0.8%	37	0.9%	28	0.7%	24	1.6%	25	2.0%	30	2.4%
Asian-American	27	0.6%	28	0.6%	57	1.5%	3	0.2%	7	0.6%	15	1.2%
Other	44	1.0%	59	1.4%	81	2.1%	28	1.8%	26	2.1%	27	2.2%
TOTAL ADMISSIONS	4,461	100%	4,337	100%	3,897	100%	1,519	100%	1,254	100%	1,248	100%
Age at Admission												
10 Years	19	0.4%	9	0.2%	10	0.3%	1	0.1%	0	0.0%	0	0.0%
11 Years	32	0.7%	21	0.5%	14	0.4%	5	0.3%	1	0.1%	1	0.1%
12 Years	80	1.8%	45	1.0%	61	1.6%	33	2.2%	13	1.0%	27	2.2%
13 Years	244	5.5%	231	5.3%	187	4.8%	94	6.2%	65	5.2%	61	4.9%
14 Years	586	13.1%	584	13.5%	587	15.1%	216	14.2%	154	12.3%	154	12.3%
15 Years	995	22.3%	933	21.5%	787	20.2%	331	21.8%	292	23.3%	269	21.6%
16 Years	1,268	28.4%	1,169	27.0%	1,072	27.5%	374	24.6%	386	30.8%	357	28.6%
17 Years	1,231	27.6%	1,335	30.8%	1,175	30.2%	464	30.5%	341	27.2%	379	30.4%
18 Years	5	0.1%	4	0.1%	1	0.0%	1	0.1%	2	0.2%	0	0.0%
19 Years +	1	0.0%	6	0.1%	3	0.1%	0	0.0%	0	0.0%	0	0.0%
Avg. Age at Admission	16.0 Years		16.1 Years		16.1 Years		16.0 Years		16.1 Years		16.1 Years	
Prior Admissions												
None	1,405	31.5%	1,434	33.1%	1,386	35.6%	582	38.3%	432	34.4%	475	38.1%
One	783	17.6%	758	17.5%	729	18.7%	268	17.6%	240	19.1%	218	17.5%
Two or more	2,273	51.0%	2,145	49.5%	1,782	45.7%	669	44.0%	582	46.4%	555	44.5%

FY 2018-19 Age at Admission



**DETENTION POPULATION
DEMOGRAPHIC TRENDS BY ETHNICITY**

			Age at Admission										TOTAL NEW ADMISSIONS	Average Age
			10	11	12	13	14	15	16	17	18	19+		
Ethnicity														
Anglo-American	FY 18-19	N	6	8	39	112	276	421	503	614	0	1	1,980	16.1
		%	0.3%	0.4%	2.0%	5.7%	13.9%	21.3%	25.4%	31.0%	0.0%	0.1%	100.0%	
	FY 17-18	N	7	9	25	108	298	500	664	689	1	0	2,301	16.1
		%	0.3%	0.4%	1.1%	4.7%	13.0%	21.7%	28.9%	29.9%	0.0%	0.0%	100.0%	
	FY 16-17	N	12	19	53	142	281	538	715	651	1	0	2,412	16.0
		%	0.5%	0.8%	2.2%	5.9%	11.7%	22.3%	29.6%	27.0%	0.0%	0.0%	100.0%	
African-American	FY 18-19	N	2	2	18	33	118	199	320	297	1	1	991	16.2
		%	0.2%	0.2%	1.8%	3.3%	11.9%	20.1%	32.3%	30.0%	0.1%	0.1%	100.0%	
	FY 17-18	N	0	6	12	53	149	231	326	331	2	5	1,115	16.1
		%	0.0%	0.5%	1.1%	4.8%	13.4%	20.7%	29.2%	29.7%	0.2%	0.4%	100.0%	
	FY 16-17	N	4	5	24	57	138	243	320	345	3	0	1,139	16.1
		%	0.4%	0.4%	2.1%	5.0%	12.1%	21.3%	28.1%	30.3%	0.3%	0.0%	100.0%	
Hispanic/Latino	FY 18-19	N	2	3	31	89	300	392	542	576	0	1	1,936	16.1
		%	0.1%	0.2%	1.6%	4.6%	15.5%	20.2%	28.0%	29.8%	0.0%	0.1%	100.0%	
	FY 17-18	N	2	7	15	124	268	457	511	605	3	1	1,993	16.1
		%	0.1%	0.4%	0.8%	6.2%	13.4%	22.9%	25.6%	30.4%	0.2%	0.1%	100.0%	
	FY 16-17	N	1	12	35	132	363	508	570	645	1	0	2,267	16.0
		%	0.0%	0.5%	1.5%	5.8%	16.0%	22.4%	25.1%	28.5%	0.0%	0.0%	100.0%	
Native American	FY 18-19	N	0	1	0	8	9	8	9	23	0	0	58	16.0
		%	0.0%	1.7%	0.0%	13.8%	15.5%	13.8%	15.5%	39.7%	0.0%	0.0%	100.0%	
	FY 17-18	N	0	0	4	2	6	13	17	20	0	0	62	16.1
		%	0.0%	0.0%	6.5%	3.2%	9.7%	21.0%	27.4%	32.3%	0.0%	0.0%	100.0%	
	FY 16-17	N	1	0	0	1	5	14	15	23	1	0	60	16.4
		%	1.7%	0.0%	0.0%	1.7%	8.3%	23.3%	25.0%	38.3%	1.7%	0.0%	100.0%	
Asian-American	FY 18-19	N	0	1	0	2	11	12	33	13	0	0	72	16.1
		%	0.0%	1.4%	0.0%	2.8%	15.3%	16.7%	45.8%	18.1%	0.0%	0.0%	100.0%	
	FY 17-18	N	0	0	0	1	5	8	9	12	0	0	35	16.2
		%	0.0%	0.0%	0.0%	2.9%	14.3%	22.9%	25.7%	34.3%	0.0%	0.0%	100.0%	
	FY 16-17	N	0	0	0	0	6	5	8	11	0	0	30	16.4
		%	0.0%	0.0%	0.0%	0.0%	20.0%	16.7%	26.7%	36.7%	0.0%	0.0%	100.0%	
Other	FY 18-19	N	0	0	0	4	0	1	22	31	0	0	58	15.9
		%	0.0%	0.0%	0.0%	6.9%	0.0%	1.7%	37.9%	53.4%	0.0%	0.0%	100.0%	
	FY 17-18	N	0	0	2	8	12	16	28	19	0	0	85	15.9
		%	0.0%	0.0%	2.4%	9.4%	14.1%	18.8%	32.9%	22.4%	0.0%	0.0%	100.0%	
	FY 16-17	N	2	1	1	6	9	18	14	20	0	1	72	15.8
		%	2.8%	1.4%	1.4%	8.3%	12.5%	25.0%	19.4%	27.8%	0.0%	1.4%	100.0%	

**DETENTION POPULATION
DEMOGRAPHIC TRENDS BY ETHNICITY**

			Prior Admissions			TOTAL NEW ADMISSIONS
Ethnicity			None	One	Two or More	
Anglo-American	FY 18-19	N	739	346	895	1,980
		%	<i>37.3%</i>	<i>17.5%</i>	<i>45.2%</i>	<i>100.0%</i>
	FY 17-18	N	844	414	1,043	2,301
		%	<i>36.7%</i>	<i>18.0%</i>	<i>45.3%</i>	<i>100.0%</i>
	FY 16-17	N	876	450	1,086	2,412
		%	<i>36.3%</i>	<i>18.7%</i>	<i>45.0%</i>	<i>100.0%</i>
African-American	FY 18-19	N	291	180	520	991
		%	<i>29.4%</i>	<i>18.2%</i>	<i>52.5%</i>	<i>100.0%</i>
	FY 17-18	N	310	199	606	1,115
		%	<i>27.8%</i>	<i>17.8%</i>	<i>54.3%</i>	<i>100.0%</i>
	FY 16-17	N	304	168	667	1,139
		%	<i>26.7%</i>	<i>14.7%</i>	<i>58.6%</i>	<i>100.0%</i>
Hispanic/Latino	FY 18-19	N	714	372	850	1,936
		%	<i>36.9%</i>	<i>19.2%</i>	<i>43.9%</i>	<i>100.0%</i>
	FY 17-18	N	620	349	1,024	1,993
		%	<i>31.1%</i>	<i>17.5%</i>	<i>51.4%</i>	<i>100.0%</i>
	FY 16-17	N	722	405	1,140	2,267
		%	<i>31.8%</i>	<i>17.9%</i>	<i>50.3%</i>	<i>100.0%</i>
Native American	FY 18-19	N	28	11	19	58
		%	<i>48.3%</i>	<i>19.0%</i>	<i>32.8%</i>	<i>100.0%</i>
	FY 17-18	N	29	12	21	62
		%	<i>46.8%</i>	<i>19.4%</i>	<i>33.9%</i>	<i>100.0%</i>
	FY 16-17	N	24	10	26	60
		%	<i>40.0%</i>	<i>16.7%</i>	<i>43.3%</i>	<i>100.0%</i>
Asian-American	FY 18-19	N	30	14	28	72
		%	<i>41.7%</i>	<i>19.4%</i>	<i>38.9%</i>	<i>100.0%</i>
	FY 17-18	N	21	8	6	35
		%	<i>60.0%</i>	<i>22.9%</i>	<i>17.1%</i>	<i>100.0%</i>
	FY 16-17	N	19	2	9	30
		%	<i>63.3%</i>	<i>6.7%</i>	<i>30.0%</i>	<i>100.0%</i>
Other	FY 18-19	N	59	24	25	108
		%	<i>54.6%</i>	<i>22.2%</i>	<i>23.1%</i>	<i>100.0%</i>
	FY 17-18	N	42	16	27	85
		%	<i>49.4%</i>	<i>18.8%</i>	<i>31.8%</i>	<i>100.0%</i>
	FY 16-17	N	42	16	14	72
		%	<i>58.3%</i>	<i>22.2%</i>	<i>19.4%</i>	<i>100.0%</i>

DETENTION POPULATION OVERVIEW BY REGION & JUDICIAL DISTRICT

Region	JD	NEW ADMISSIONS	Valid CJRA ¹	PERCENT HIGH RISK (CJRA) ²	ADP	LOS-D (days)
Central						
	1st	440	400	31.3%	19.6	16.7
	2nd	803	767	40.9%	41.3	15.2
	5th	34	30	10.0%	1.3	10.7
	18th	937	845	40.2%	44.3	16.6
Central Total		2,214	2,042	38.3%	106.5	16.0
Northeast						
	8th	280	262	54.2%	10.7	13.5
	13th	79	72	13.9%	3.4	15.0
	17th	534	403	22.3%	22.3	14.5
	19th	433	421	23.8%	18.3	14.0
	20th	124	106	51.9%	7.1	20.2
Northeast Total		1,450	1,264	31.4%	61.8	14.6
Southern						
	3rd	18	17	35.3%	2.1	51.7
	4th	713	675	14.5%	45.9	23.6
	10th	212	208	46.6%	7.6	9.5
	11th	89	74	47.3%	2.8	8.5
	12th	44	34	23.5%	2.2	17.1
	15th	16	14	50.0%	1.3	23.2
	16th	16	15	40.0%	1.2	23.1
Southern Total		1,108	1,037	24.8%	62.9	19.7
Western						
	6th	26	15	33.3%	1.4	18.2
	7th	55	46	60.9%	2.7	15.4
	9th	30	27	40.7%	2.3	20.6
	14th	7	6	50.0%	0.6	40.7
	21st	232	217	47.0%	12.1	13.7
	22nd	23	12	75.0%	1.3	18.8
Western Total		373	323	48.9%	20.3	15.7
Other³					1.8	
Statewide Total		5,145	4,666	34.2%	253.9	17.8

¹Colorado Juvenile Risk Assessment (CJRA) pre-screens are considered valid if they are administered within 14 days of the admission date, and are complete.

²High risk for recidivism on the CJRA pre-screen instrument; excludes missing data (missing = 9.3% statewide).

³DYS measures ADP by judicial district based on a maximum of three reasons detained per client. The "other" ADP comes from clients who exceed three reasons detained.

**FY 2018-19 DETENTION POPULATION OVERVIEW
BY REGION & JUDICIAL DISTRICT**

Region	JD	ADMISSION AGE																				TOTAL																							
		10	11	12	13	14	15	16	17	18	19	20	ADP	%																															
Central																						ADP	%	ADP	%	ADP	%	ADP	%	ADP	%	ADP	%	ADP	%	ADP	%	ADP	%	ADP	%	ADP	%		
	1st	0.0	0%	0.1	0%	0.1	1%	1.2	6%	2.4	12%	4.0	20%	6.0	0%	5.7	29%	0.0	0%	0.0	0%	0.0	0%	19.6	100%																				
	2nd	0.0	0%	0.0	0%	0.6	1%	1.4	3%	4.5	11%	8.6	21%	14.1	34%	12.2	29%	0.0	0%	0.0	0%	0.0	0%	41.3	100%																				
	5th	0.0	0%	0.0	0%	0.0	0%	0.0	1%	0.2	14%	0.4	30%	0.2	17%	0.5	38%	0.0	0%	0.0	0%	0.0	0%	1.3	100%																				
	18th	0.0	0%	0.0	0%	0.5	1%	2.0	4%	5.2	12%	7.1	16%	13.7	31%	15.8	36%	0.0	0%	0.0	0%	0.0	0%	44.3	100%																				
Central Total		0.0	0.0	0.1	0.0	1.2	1%	4.6	4%	12.3	12%	20.0	19%	34.1	32%	34.1	32%	0.0	0%	0.0	0%	0.0	0%	106.5	100%																				
Northeast																						ADP	%	ADP	%	ADP	%	ADP	%	ADP	%	ADP	%	ADP	%	ADP	%	ADP	%	ADP	%	ADP	%	ADP	%
	8th	0.0	0%	0.0	0%	0.0	0%	0.5	5%	1.7	16%	2.2	21%	3.2	30%	3.0	28%	0.0	0%	0.0	0%	0.0	0%	10.7	100%																				
	13th	0.0	0%	0.0	0%	0.1	3%	0.1	3%	0.6	18%	0.3	10%	1.1	31%	1.2	36%	0.0	0%	0.0	0%	0.0	0%	3.4	100%																				
	17th	0.0	0%	0.1	1%	0.2	1%	1.4	6%	2.6	12%	4.9	22%	7.5	33%	5.7	26%	0.0	0%	0.0	0%	0.0	0%	22.3	100%																				
	19th	0.0	0%	0.0	0%	0.2	1%	1.0	6%	3.3	18%	4.7	26%	4.1	23%	4.7	26%	0.0	0%	0.2	1%	0.0	0%	18.3	100%																				
	20th	0.0	0%	0.0	0%	0.3	4%	0.6	9%	0.4	5%	1.2	17%	2.2	31%	2.4	34%	0.0	0%	0.0	0%	0.0	0%	7.1	100%																				
Northeast Total		0.0	0.0	0.1	0.0	0.8	1%	3.6	6%	8.6	14%	13.4	22%	18.0	29%	17.1	28%	0.0	0%	0.2	0%	0.0	0%	61.8	100%																				
Southern																						ADP	%	ADP	%	ADP	%	ADP	%	ADP	%	ADP	%	ADP	%	ADP	%	ADP	%	ADP	%	ADP	%	ADP	%
	3rd	0.0	0%	0.0	0%	0.4	19%	0.0	1%	0.1	2%	0.0	0%	1.3	60%	0.4	18%	0.0	0%	0.0	0%	0.0	0%	2.1	100%																				
	4th	0.0	0%	0.0	0%	0.3	1%	1.7	4%	4.5	10%	11.7	25%	16.2	35%	11.4	25%	0.0	0%	0.0	0%	0.0	0%	45.9	100%																				
	10th	0.1	1%	0.0	0%	0.2	3%	0.2	2%	1.1	14%	1.8	24%	2.4	32%	1.9	25%	0.0	0%	0.0	0%	0.0	0%	7.6	100%																				
	11th	0.0	0%	0.0	0%	0.0	0%	0.2	7%	0.5	18%	0.7	24%	1.0	36%	0.4	15%	0.0	0%	0.0	0%	0.0	0%	2.8	100%																				
	12th	0.1	5%	0.0	0%	0.0	0%	0.0	0%	0.0	2%	0.1	4%	0.7	32%	1.2	56%	0.0	0%	0.0	0%	0.0	0%	2.2	100%																				
	15th	0.0	0%	0.0	0%	0.0	0%	0.0	0%	0.0	0%	0.3	20%	0.4	28%	0.7	52%	0.0	0%	0.0	0%	0.0	0%	1.3	100%																				
	16th	0.0	0%	0.0	0%	0.0	0%	0.2	17%	0.4	33%	0.0	1%	0.5	43%	0.1	7%	0.0	0%	0.0	0%	0.0	0%	1.2	100%																				
Southern Total		0.2	0.0	0.0	0.0	0.9	0.0	2.3	4%	6.6	10%	14.5	23%	22.4	36%	16.1	26%	0.0	0%	0.0	0%	0.0	0%	62.9	100%																				
Western																						ADP	%	ADP	%	ADP	%	ADP	%	ADP	%	ADP	%	ADP	%	ADP	%	ADP	%	ADP	%	ADP	%	ADP	%
	6th	0.2	14%	0.0	0%	0.0	0%	0.0	1%	0.3	25%	0.2	16%	0.2	16%	0.4	28%	0.0	0%	0.0	0%	0.0	0%	1.4	100%																				
	7th	0.0	0%	0.0	0%	0.0	1%	0.0	0%	0.2	7%	0.8	28%	1.1	39%	0.7	25%	0.0	0%	0.0	0%	0.0	0%	2.7	100%																				
	9th	0.0	0%	0.0	0%	0.0	0%	0.5	21%	0.0	0%	0.2	9%	0.1	4%	1.5	67%	0.0	0%	0.0	0%	0.0	0%	2.3	100%																				
	14th	0.0	0%	0.0	0%	0.0	0%	0.0	0%	0.1	10%	0.4	71%	0.0	2%	0.1	17%	0.0	0%	0.0	0%	0.0	0%	0.6	100%																				
	21st	0.0	0%	0.0	0%	0.4	3%	0.4	3%	1.0	8%	3.2	26%	3.4	28%	3.7	31%	0.0	0%	0.0	0%	0.0	0%	12.1	100%																				
	22nd	0.0	0%	0.0	0%	0.0	0%	0.0	0%	0.4	34%	0.3	25%	0.3	23%	0.2	18%	0.0	0%	0.0	0%	0.0	0%	1.3	100%																				
Western Total		0.2	1%	0.0	0%	0.4	2%	0.9	4%	2.0	10%	5.1	25%	5.1	25%	6.6	33%	0.0	0%	0.0	0%	0.0	0%	20.3	100%																				
Other ¹		0.0	0%	0.0	0%	0.0	0%	0.3	19%	0.1	7%	0.2	10%	0.8	47%	0.3	19%	0.0	0%	0.0	0%	0.0	0%	1.8	100%																				
Statewide Total		0.5	0%	0.3	0%	3.3	1%	11.7	5%	29.6	12%	53.2	21%	81.0	32%	74.3	29%	0.0	0%	0.2	0%	0.0	0%	253.9	100%																				

¹DYS measures ADP by judicial district based on a maximum of three reasons detained per client. The "other" ADP comes from clients who exceed three reasons detained.

COMMITMENT POPULATION TRENDS

10 Year Commitment Trends

Fiscal Year	Clients Served ¹	Percentage Change +/-	New Commits	Percentage Change +/-	Commitment ADP ²	Percentage Change +/-	LOS-C (months)	Percent Change +/-
2009-10	2,404	-4.3%	743	-2.2%	1,171.6	-4.7%	18.9	-0.4%
2010-11	2,215	-7.9%	646	-13.1%	1,041.3	-11.1%	18.2	-3.8%
2011-12	1,960	-11.5%	533	-17.5%	983.1	-5.6%	18.3	0.6%
2012-13	1,786	-8.9%	488	-8.4%	851.0	-13.4%	19.2	4.6%
2013-14	1,612	-9.7%	474	-2.9%	797.6	-6.3%	19.3	0.7%
2014-15	1,465	-9.1%	410	-13.5%	740.7	-7.1%	20.3	5.2%
2015-16	1,362	-7.0%	387	-5.6%	692.9	-6.5%	19.8	-2.5%
2016-17	1,292	-5.1%	381	-1.6%	651.1	-6.0%	20.3	2.6%
2017-18	1,255	-2.9%	400	5.0%	646.7	-0.7%	19.9	-1.7%
2018-19	1,171	-6.7%	293	-26.8%	577.6	-10.7%	19.6	-1.6%

During FY 2018-19, the committed population experienced declines in all areas. Commitment ADP decreased by nearly 11% (10.7%) to an ADP of 577.6. The number of clients served decreased by 6.7%, which marked both the 13th consecutive year of decline in unique youth served and ADP. The number of newly committed youth declined by 26.8%, and represents the largest one-year decline to date. Commitment length of service (LOS-C) for youth who discharged during FY 2017-18 was 19.6 months, a decrease of 1.6% from the FY 2017-18 LOS-C of 19.9 months. The low number of new commitment DYS has experienced over the past four years are reminiscent of those experienced in the 1980's, with FY 1981-82 having 404 new commitments.

In their December 2019 forecast estimates, Legislative Council Staff (LCS) projected that DYS' commitment population will continue to experience declines over the next three fiscal years, reaching 452 ADP by FY 2020-21. Similarly, population projections released in January 2020 by the Division of Criminal Justice (DCJ) also indicate continuing declines in DYS commitment levels, reaching 446 ADP by the end of FY 2020-21.

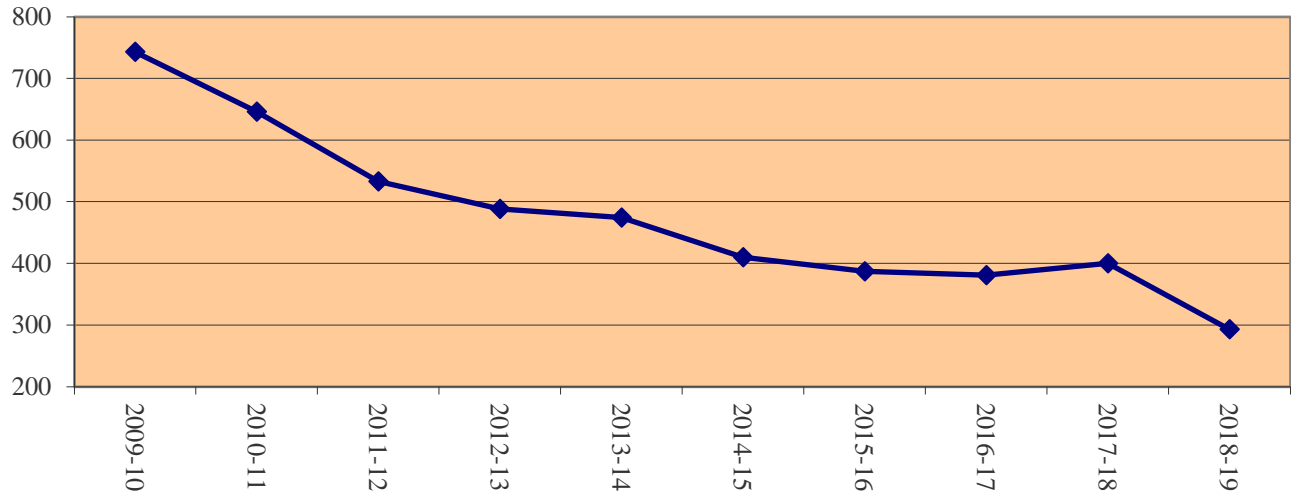
¹Clients Served is an unduplicated count.

²Commitment ADP includes secure, staff-supervised, and community based residential treatment programs.

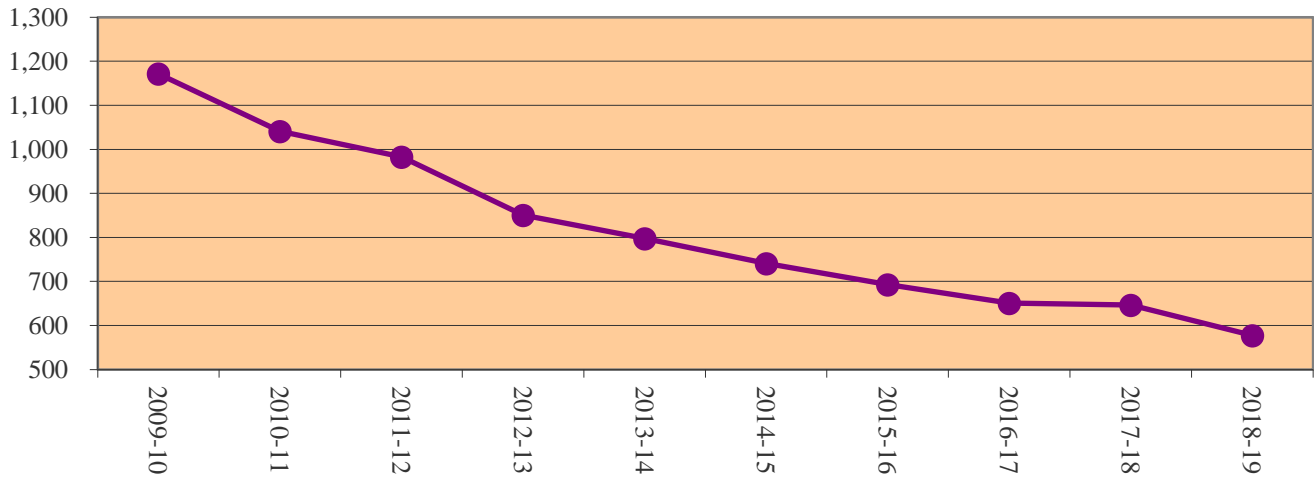
COMMITMENT POPULATION TRENDS

FY 2009-10 Through FY 2018-19

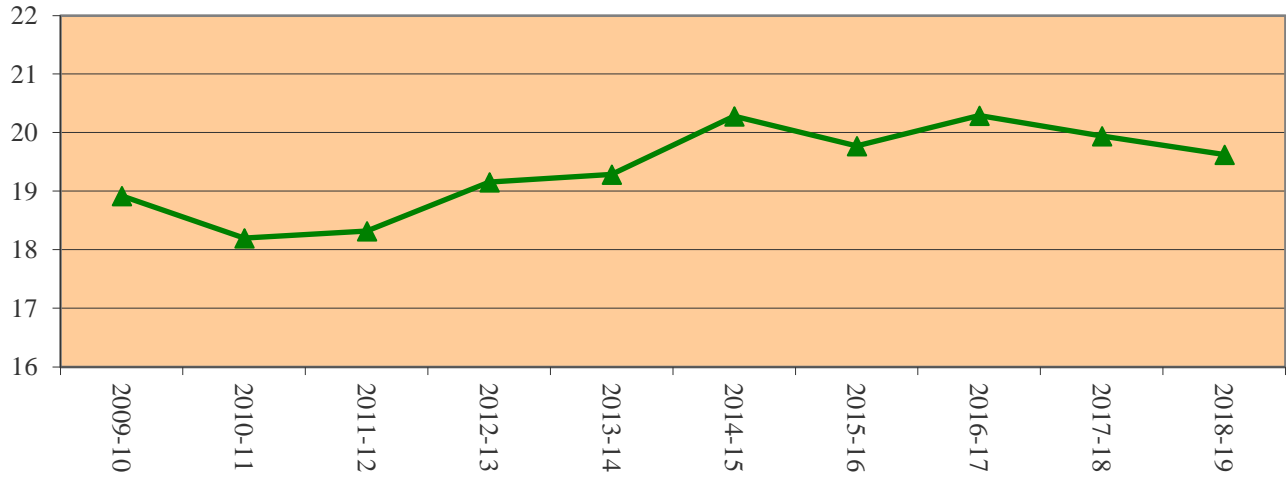
Trends in New Commitments



Trends in Commitment ADP



Trends in Commitment LOS-C (months)



PREVIOUS JUVENILE JUSTICE INVOLVEMENT

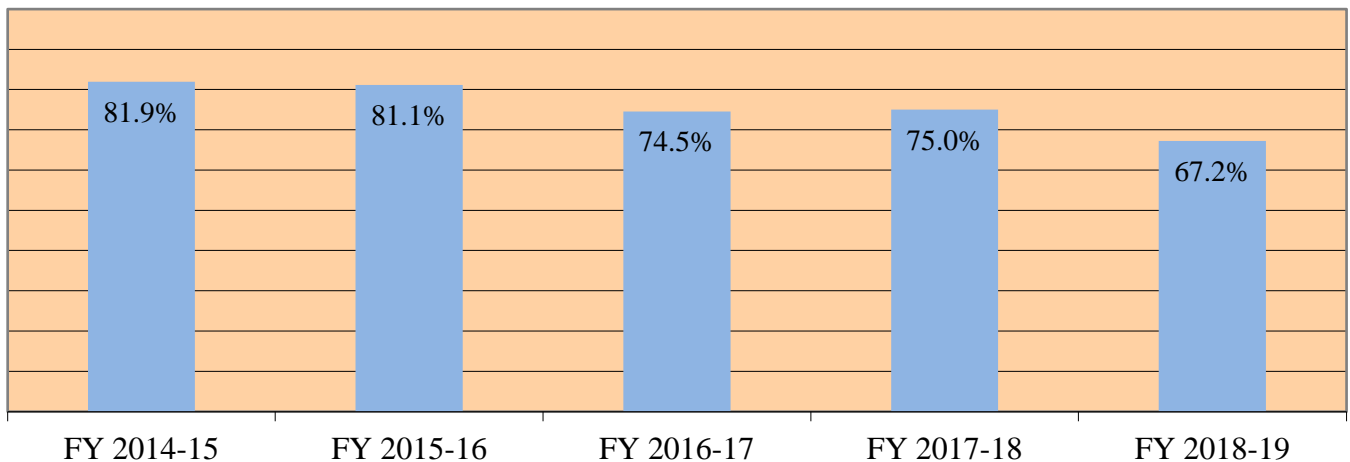
Five-Year New Commitment Trends

	FY 2014-15		FY 2015-16		FY 2016-17		FY 2017-18		FY 2018-19	
	#	%	#	%	#	%	#	%	#	%
1 Probation	300	73.2%	279	72.1%	243	63.8%	254	63.5%	175	59.7%
2 Diversion/Informal Adjustment & Probation	35	8.5%	35	9.0%	37	9.7%	45	11.3%	22	7.5%
3 Deferred or "Reserved" Adjudication ¹	1	0.2%	0	0.0%	4	1.0%	1	0.3%	0	0.0%
4 No Probation	49	12.0%	64	16.5%	60	15.7%	67	16.8%	72	24.6%
5 Diversion/Informal Adjustment	5	1.2%	9	2.3%	16	4.2%	10	2.5%	10	3.4%
6 Unknown at time of Commitment	7	1.7%	0	0.0%	1	0.3%	0	0.0%	1	0.3%
7 Missing/No Information	13	3.2%	0	0.0%	20	5.2%	23	5.8%	13	4.4%
TOTAL	410	100%	387	100%	381	100%	400	100%	293	100%

¹The majority of Deferred youth have open Probation cases as well.

	FY 2014-15		FY 2015-16		FY 2016-17		FY 2017-18		FY 2018-19	
	#	%	#	%	#	%	#	%	#	%
All Probation (categories 1 & 2)	335	81.7%	314	81.1%	280	73.5%	299	74.8%	197	67.2%
All Potential Probation (categories 1, 2 & 3)	336	81.9%	314	81.1%	284	74.5%	300	75.0%	197	67.2%

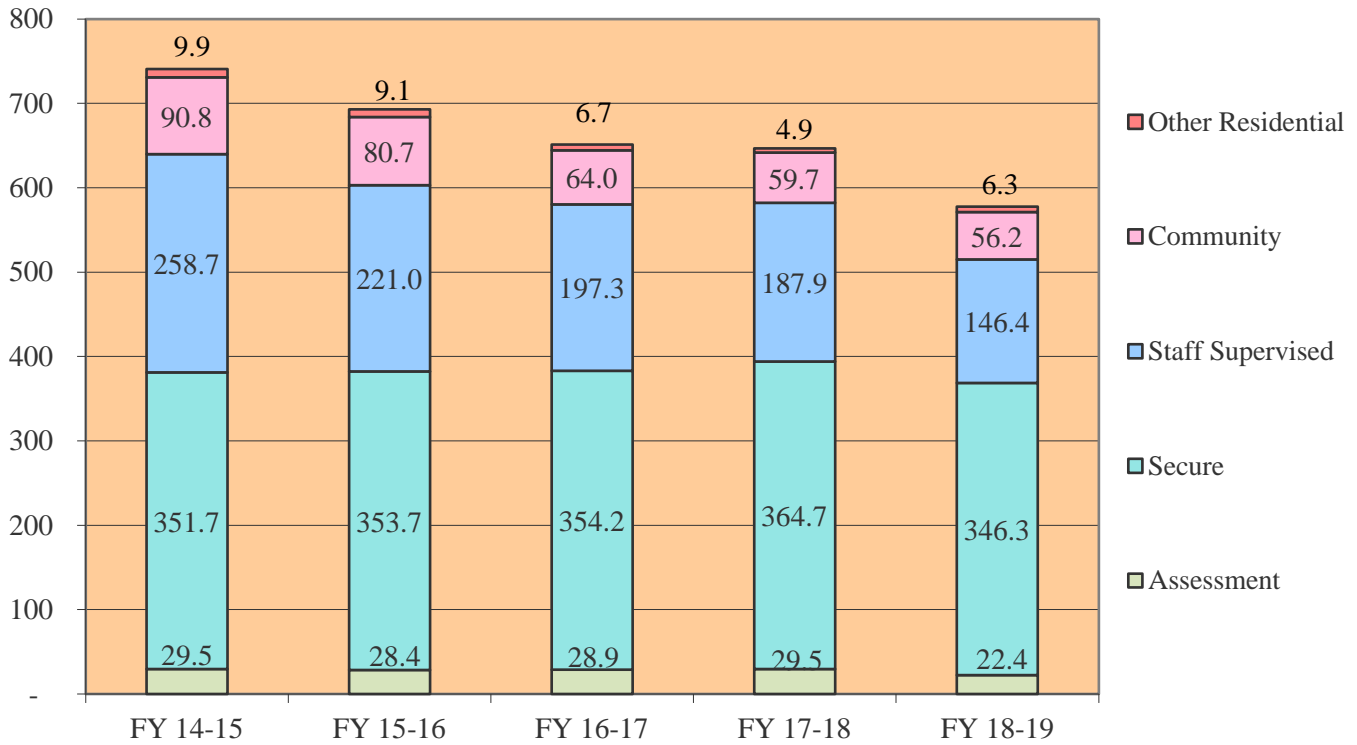
DYS New Commitments With Previous Probation Involvement



COMMITMENT POPULATION TRENDS BY PROGRAM TYPE

	FY 2014-15	FY 2015-16	FY 2016-17	FY 2017-18	FY 2018-19
Assessment	29.5	28.4	28.9	29.5	22.4
Secure	351.7	353.7	354.2	364.7	346.3
Staff Supervised	258.7	221.0	197.3	187.9	146.4
Community	90.8	80.7	64.0	59.7	56.2
Other Residential ¹	9.9	9.1	6.7	4.9	6.3
Total Commitment ADP	740.7	692.9	651.1	646.7	577.6

Commitment ADP



¹Other Residential includes Group Homes, Job Corps, Hospitalizations, Shelter Care, etc.

**COMMITMENT POPULATION
CLIENTS SERVED & ADP BY PROGRAM**

Fiscal Year 2018-19

	<i>Unique Clients Served¹</i>	ADP
Assessment		
State Operated		
Grand Mesa YSC	53	3.7
Mount View YSC	263	18.0
Platte Valley YSC ²	30	0.4
Spring Creek YSC ²	19	0.2
<i>Unique Client Count (Assessment)</i>	318	Total Assessment ADP 22.4
Secure		
State Operated		
Adams YSC ³	N/A	0.7
Gilliam YSC ³	N/A	0.6
Grand Mesa YSC	93	37.6
Lookout Mountain YSC	250	139.6
Marvin W. Foote YSC ³	N/A	2.1
Mount View YSC	392	59.7
Platte Valley YSC	176	57.3
Pueblo YSC ³	N/A	1.2
Spring Creek YSC ³	30	3.0
Zebulon Pike YSC	76	40.5
<i>Unique Client Count (State Op.)</i>		Subtotal State Operated 342.4
Privately Operated		
Betty K. Marler Center	39	1.5
Robert Denier YSC	23	2.3
<i>Unique Client Count (Privately Op.)</i>		Subtotal Privately Operated 3.9
<i>Unique Client Count (Secure)</i>	812	Total Secure ADP 346.3
Staff-Supervised (Contract)		
Alternative Homes for Youth	34	13.1
Devereux Cleo Wallace	1	0.1
Gateway Residential-Delta	16	5.5
Hilltop Residential Youth Services	15	2.3
Jefferson Hills Aurora	92	26.7
Ridge View YSC	265	87.7
ROP - Sage Residential	2	0.5
Southern Peaks	5	0.6
Third Way Center - Lowry	37	9.8
<i>Unique Client Count (Staff-Supervised)</i>	442	Total Staff-Supervised ADP 146.4

¹Unique Clients Served is an unduplicated count of youth. These counts are not a sum of individual program areas, as youth are often served in multiple program areas (e.g.: assessment and secure) throughout the fiscal year.

²Not assessment facilities, but hold youth who are en route to the Front Range Assessment Center at Mount View.

³Detention-only facilities periodically and briefly serve committed youth in certain instances.

**COMMITMENT POPULATION
CLIENTS SERVED & ADP BY PROGRAM
Fiscal Year 2018-19**

	<i>Unique Clients Served¹</i>		ADP
Community (Contract)			
Ariel Clinical Services	3		0.7
Community Corrections (Comcor)	1		0.1
Dale House Project	35		8.8
Denver Area Youth Services	7		2.5
Gateway Residential Program - Grand Junction	5		0.7
Griffith Centers for Children Inc.	6		1.9
Job Corps	2		1.4
Kids Crossing	5		1.4
Mesa County Community Corrections	6		1.3
Mt. Evans Qualifying House	31		9.3
Sage Residential	2		0.5
Savio House	1		0.2
Synergy	3		0.5
Third Way Center - Bannock	1		0.4
Third Way Center - Pontiac	15		6.1
Third Way Center - York	12		4.7
Third Way Center - Lincoln	12		4.0
Turning Point Center - Prospect	18		4.6
Turning Point - Mathews St.	28		7.0
Whimspire Child Placement Agency	1		0.03
<i>Unique Client Count (Community)</i>	182	Total Community (Contract)	56.2
Other Residential			
Job Corps Program (Federally Funded)	1		0.0
Shelter Care (Short Term)	8		1.1
Hospital	7		0.6
Residential Programs (Mental Health, Drug & Alcohol, Work)	14		1.8
Mental Health Institutes/Facilities	18		0.4
<i>Unique Client Count (Other Residential²)</i>	38	Total Other Residential	6.3
STATEWIDE COMMITMENT		1,171	577.6

¹Unique Clients Served is an unduplicated count of youth. These counts are not a sum of individual program areas, as youth are often served in multiple program areas (e.g.: assessment and secure) throughout the fiscal year.

²Due to relatively few youth referred to these types of placements, the Other Residential subtotals may not be the sum of individual placements; this is typically the result of rounding errors and the method by which ADP is calculated.

DYS COMMITMENT POPULATION DEMOGRAPHIC TRENDS

	FY 2016-17				FY 2017-18				FY 2018-19			
	New Coms	%	ADP	%	New Coms	%	ADP	%	New Coms	%	ADP	%
GENDER												
Male	325	85.3%	554.6	85.2%	346	86.5%	560.3	86.6%	241	82.3%	502.7	87.0%
Female	56	14.7%	96.5	14.8%	54	13.5%	86.3	13.4%	52	17.7%	74.9	13.0%
TOTAL	381	100%	651.1	100%	400	100%	646.7	100%	293	100%	577.6	100%
ETHNICITY												
Anglo-Amer.	153	40.2%	222.2	34.1%	160	40.0%	233.6	36.1%	107	36.5%	219.6	38.0%
African-Amer.	60	15.7%	133.1	20.4%	80	20.0%	132.5	20.5%	66	22.5%	127.5	22.1%
Hispanic/Latino	164	43.0%	284.7	43.7%	154	38.5%	272.6	42.1%	112	38.2%	223.9	38.8%
Native-American	2	0.5%	5.9	0.9%	3	0.8%	3.2	0.5%	3	1.0%	2.9	0.5%
Asian-American	1	0.3%	2.9	0.4%	1	0.3%	1.5	0.2%	2	0.7%	1.4	0.2%
Other	1	0.3%	2.4	0.4%	2	0.5%	3.1	0.5%	3	1.0%	2.3	0.4%
AGE¹ at Commitment												
11 Years	0	0.0%	0.0	0.0%	0	0.0%	0.0	0.0%	0	0.0%	0.0	0.0%
12 Years	0	0.0%	1.3	0.2%	1	0.3%	1.9	0.3%	0	0.0%	0.1	0.0%
13 Years	6	1.6%	16.9	2.6%	3	0.8%	15.8	2.4%	2	0.7%	9.2	1.6%
14 Years	27	7.1%	55.6	8.5%	19	4.8%	47.3	7.3%	26	8.9%	50.8	8.8%
15 Years	70	18.4%	131.1	20.1%	60	15.0%	122.5	18.9%	41	14.0%	100.9	17.5%
16 Years	104	27.3%	172.4	26.5%	105	26.3%	179.9	27.8%	77	26.3%	152.4	26.4%
17 Years	119	31.2%	199.9	30.7%	131	32.8%	189.1	29.2%	86	29.4%	169.4	29.3%
18 Years	46	12.1%	60.2	9.3%	65	16.3%	77.1	11.9%	51	17.4%	78.2	13.5%
19 Years	8	2.1%	13.7	2.1%	15	3.8%	13.0	2.0%	10	3.4%	16.7	2.9%
20 Years	1	0.3%	13.7	2.1%	1	0.3%	0.1	0.0%	0	0.0%	0.0	0.0%
Average Age at Commitment:	16.81	Years			16.77	Years			16.90	Years		
Rate of New Commitments per 10,000 Juvenile Population	6.3				6.5				4.9			

¹New Commitment counts for each age category correspond to age at commitment. However, ADP figures for each age category are based on the youth's age on the last day of the fiscal year or at the time of discharge, whichever comes first.

NEW COMMITMENT TRENDS
SENTENCE TYPE & OFFENSE TYPE (Number)

Fiscal Year	2014-15	2015-16	2016-17	2017-18	2018-19
Sentence Type					
Non-Mandatory	310	311	300	295	208
Mandatory	53	43	48	52	37
Repeat	34	17	13	16	17
Violent	3	3	8	15	9
Aggravated Juvenile	10	13	12	22	21
Data Not Available	0	0	0	0	1
TOTAL NEW COMMITMENTS	410	387	381	400	293
Offense Level					
Felony	236	238	210	241	175
Misdemeanor	169	149	171	159	118
Petty	1	0	0	0	0
Data Not Available	4	0	0	0	0
TOTAL NEW COMMITMENTS	410	387	381	400	293
Offense Type					
Person Felony	86	95	96	116	86
Person Misdemeanor	66	67	89	58	29
Property Felony	107	85	75	83	61
Property Misdemeanor	41	37	36	34	13
Drug Felony	17	20	14	14	11
Drug Misdemeanor	11	3	7	12	7
Weapons Felony	6	9	15	11	6
Weapons Misdemeanor	18	28	27	49	46
Other ¹	53	43	22	23	34
Data Not Available	5	0	0	0	0
TOTAL NEW COMMITMENTS	410	387	381	400	293
Offense Type					
Person	169	162	185	174	115
Property	150	122	111	117	74
Drug	28	23	21	26	18
Weapon	25	37	42	60	52
Other ¹	38	43	22	23	34
Data Not Available	0	0	0	0	0
TOTAL NEW COMMITMENTS	410	387	381	400	293

¹Other offenses include financial crimes, escape, traffic offenses, disorderly conduct, interfering with judicial proceedings, etc.

NEW COMMITMENT TRENDS
SENTENCE TYPE & OFFENSE TYPE (Percentage)

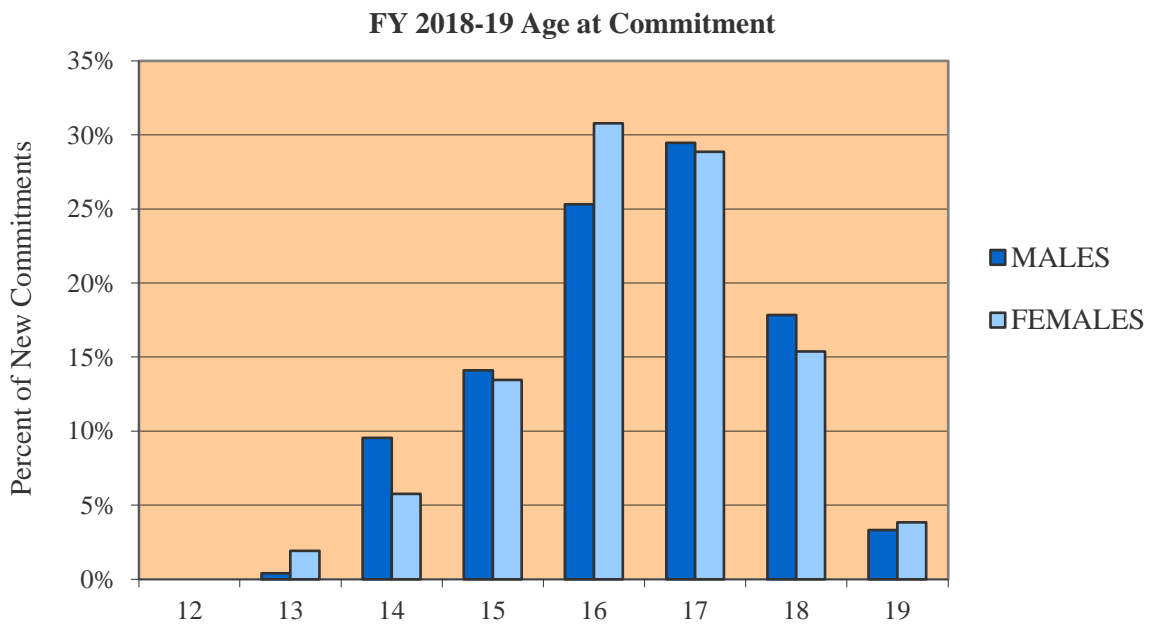
Fiscal Year	2014-15	2015-16	2016-17	2017-18	2018-19
Sentence Type					
Non-Mandatory	75%	80%	79%	74%	71%
Mandatory	13%	11%	13%	13%	13%
Repeat	8%	4%	3%	4%	6%
Violent	1%	1%	2%	4%	3%
Aggravated Juvenile	2.5%	3.4%	3.1%	5.5%	7.2%
Data Not Available	0%	0%	0%	0%	0%
TOTAL NEW COMMITMENTS	100%	100%	100%	100%	100%
Offense Level					
Felony	57%	62%	55%	60%	60%
Misdemeanor	41%	39%	45%	40%	40%
Petty	0%	0%	0%	0%	0%
Data Not Available	1%	0%	0%	0%	0%
TOTAL NEW COMMITMENTS	100%	100%	100%	100%	100%
Offense Type					
Person Felony	21%	25%	25%	29%	29%
Person Misdemeanor	16%	17%	23%	15%	10%
Property Felony	26%	22%	20%	21%	21%
Property Misdemeanor	10%	10%	9%	9%	4%
Drug Felony	4%	5%	4%	4%	4%
Drug Misdemeanor	3%	1%	2%	3%	2%
Weapons Felony	1%	2%	4%	3%	2%
Weapons Misdemeanor	4%	7%	7%	12%	16%
Other ¹	13%	11%	6%	6%	12%
Data Not Available	1%	0%	0%	0%	0%
TOTAL NEW COMMITMENTS	100%	100%	100%	100%	100%
Offense Type					
Person	37%	38%	49%	44%	39%
Property	36%	34%	29%	29%	25%
Drug	7%	7%	6%	7%	6%
Weapon	6%	2%	11%	15%	18%
Other ¹	13%	20%	6%	6%	12%
Data Not Available	1%	0%	0%	0%	0%
TOTAL NEW COMMITMENTS	100%	100%	100%	100%	100%

¹Other offenses include financial crimes, escape, traffic offenses, disorderly conduct, interfering with judicial proceedings, etc.

NEW COMMITMENT TRENDS

DEMOGRAPHICS BY GENDER

	MALES						FEMALES					
	FY 2016-17		FY 2017-18		FY 2018-19		FY 2016-17		FY 2017-18		FY 2018-19	
	N	%	N	%	N	%	N	%	N	%	N	%
DEMOGRAPHIC DATA¹												
Ethnicity												
Anglo-American	132	40.6%	131	37.9%	86	35.7%	21	37.5%	29	53.7%	21	40.4%
African-American	57	17.5%	70	20.2%	56	23.2%	3	5.4%	10	18.5%	10	19.2%
Hispanic/Latino	134	41.2%	142	41.0%	93	38.6%	30	53.6%	12	22.2%	19	36.5%
Native American	0	0.0%	1	0.3%	3	1.2%	2	3.6%	2	3.7%	0	0.0%
Asian-American	1	0.3%	1	0.3%	2	0.8%	0	0.0%	0	0.0%	0	0.0%
Other	1	0.3%	1	0.3%	1	0.4%	0	0.0%	1	1.9%	2	3.8%
TOTAL NEW COMMITMENTS	325	100%	346	100%	241	100%	56	100%	54	100%	52	100%
Age												
12 Years	0	0.0%	1	0.3%	0	0.0%	0	0.0%	0	0.0%	0	0.0%
13 Years	5	1.5%	3	0.9%	1	0.4%	1	1.8%	0	0.0%	1	1.9%
14 Years	23	7.1%	17	4.9%	23	9.5%	4	7.1%	2	3.7%	3	5.8%
15 Years	64	19.7%	51	14.7%	34	14.1%	6	10.7%	9	16.7%	7	13.5%
16 Years	91	28.0%	96	27.7%	61	25.3%	13	23.2%	9	16.7%	16	30.8%
17 Years	97	29.8%	113	32.7%	71	29.5%	22	39.3%	18	33.3%	15	28.8%
18 Years	36	11.1%	51	14.7%	43	17.8%	10	17.9%	14	25.9%	8	15.4%
19 Years	9	2.8%	14	4.0%	8	3.3%	0	0.0%	2	3.7%	2	3.8%
Average Age at Commitment (Years)	16.8		17.0		16.9		16.9		17.3		16.9	



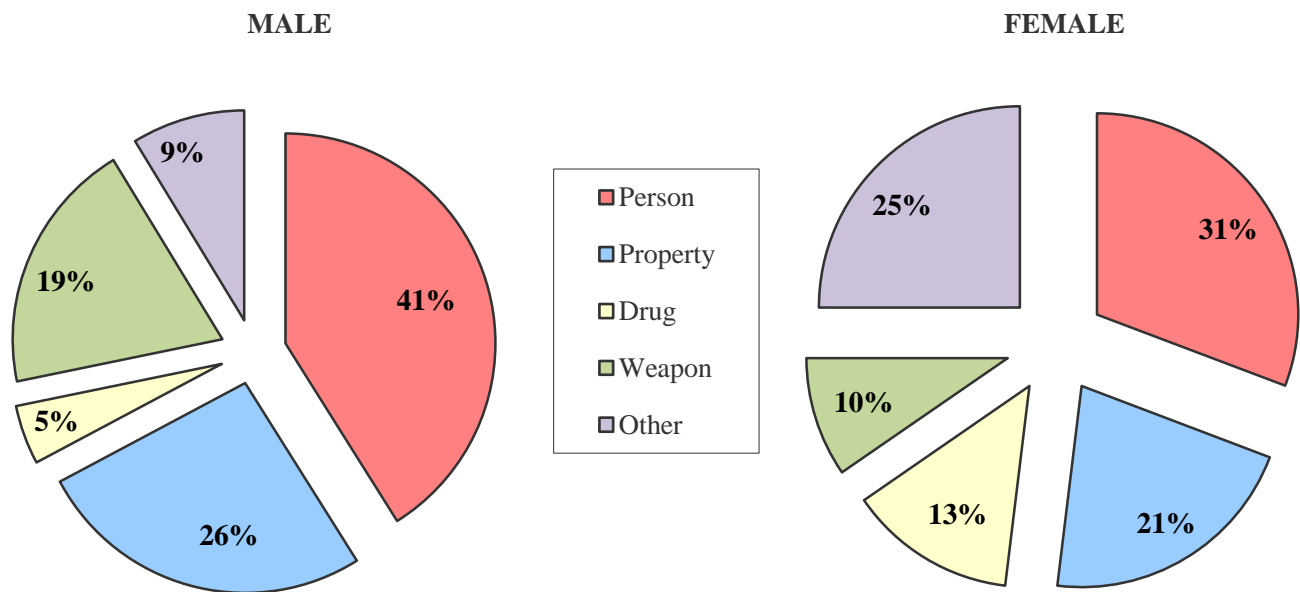
¹Data based on new commitments.

NEW COMMITMENT TRENDS

OFFENSE TYPE & SENTENCE TYPE BY GENDER

NEW COMMITMENT DATA	MALES						FEMALES					
	FY 2016-17		FY 2017-18		FY 2018-19		FY 2016-17		FY 2017-18		FY 2018-19	
	N	%	N	%	N	%	N	%	N	%	N	%
Offense Type												
Person Felony	83	25.5%	105	30.3%	80	33.2%	13	23.2%	11	20.4%	6	11.5%
Person Misdemeanor	76	23.4%	45	13.0%	19	7.9%	13	23.2%	13	24.1%	10	19.2%
Property Felony	65	20.0%	71	20.5%	56	23.2%	10	17.9%	12	22.2%	5	9.6%
Property Misdemeanor	30	9.2%	29	8.4%	7	2.9%	6	10.7%	5	9.3%	6	11.5%
Drug Felony	12	3.7%	12	3.5%	7	2.9%	2	3.6%	2	3.7%	4	7.7%
Drug Misdemeanor	4	1.2%	8	2.3%	4	1.7%	3	5.4%	4	7.4%	3	5.8%
Weapons Felony	14	4.3%	11	3.2%	6	2.5%	1	1.8%	0	0.0%	0	0.0%
Weapons Misdemeanor	27	8.3%	49	14.2%	41	17.0%	0	0.0%	0	0.0%	5	9.6%
Other ¹	14	4.3%	16	4.6%	21	8.7%	8	14.3%	7	13.0%	13	25.0%
TOTAL NEW COMMITMENTS	325	100%	346	100%	241	100%	56	100%	54	100%	52	100%
Sentence Type												
Non-Mandatory	250	76.9%	252	72.8%	165	68.5%	50	89.3%	43	79.6%	43	82.7%
Mandatory	46	14.2%	46	13.3%	30	12.4%	2	3.6%	6	11.1%	7	13.5%
Repeat	11	3.4%	15	4.3%	16	6.6%	2	3.6%	1	1.9%	1	1.9%
Violent	7	2.2%	15	4.3%	9	3.7%	1	1.8%	0	0.0%	0	0.0%
Aggravated Juvenile	11	3.4%	18	5.2%	20	8.3%	1	1.8%	4	7.4%	1	1.9%
Data Not Available	0	0.0%	0	0.0%	1	0.4%	0	0.0%	0	0.0%	0	0.0%

FY 2018-19 Committing Offense Type²



¹Includes other types of felony, misdemeanor, and petty offenses like financial crimes, disorderly conduct, impersonation, obstruction, etc.

²Felony and misdemeanor counts are combined.

**NEW COMMITMENT
PROFILE TRENDS BY GENDER**

	MALES						FEMALES					
	FY 2016-17		FY 2017-18		FY 2018-19		FY 2016-17		FY 2017-18		FY 2018-19	
	N	%	N	%	N	%	N	%	N	%	N	%
NEW COMMITMENT PROFILE												
TOTAL NEW COMMITMENTS	325	100%	346	100%	241	100%	56	100%	54	100%	52	100%
Prior Out-of-Home Placements												
None	103	31.7%	112	32.4%	92	38.2%	9	16.1%	14	25.9%	10	19.2%
One	81	24.9%	81	23.4%	45	18.7%	11	19.6%	11	20.4%	4	7.7%
Two or more	141	43.4%	153	44.2%	104	43.2%	36	64.3%	29	53.7%	38	73.1%
Runaway History Prior to Commitment¹												
No Runaway History	70	21.5%	81	23.4%	49	20.3%	5	8.9%	5	9.3%	4	7.7%
Runaway History	255	78.5%	265	76.6%	192	79.7%	51	91.1%	49	90.7%	48	92.3%
Assessed Substance Abuse Counseling Needs²												
No Treatment	55	16.9%	47	13.6%	36	14.9%	6	10.7%	6	11.1%	6	11.5%
Treatment	268	87.4%	288	83.2%	201	83.4%	50	98.4%	48	88.9%	46	88.5%
Data Not Available	2	0.0%	11	3.2%	4	1.7%	0	0.0%	0	0.0%	0	0.0%
Assessed Mental Health Needs³												
No Formal Intervention Required	123	40.7%	119	36.8%	91	39.6%	6	11.1%	15	28.3%	6	12.2%
Formal Intervention Required	179	59.3%	204	63.2%	139	60.4%	48	88.9%	38	71.7%	43	87.8%
Data Not Available	23	N/A	23	N/A	11	N/A	2	N/A	1	N/A	3	N/A
Average Age at First Adjudication (Years)	14.8		15.1		15.2		15.2		15.6		15.2	

¹Refers to running away from a secure or nonsecure placement as well as from home during the 12 months prior to commitment.

²Substance abuse history and treatment needs are assessed within one month of commitment, using the Juvenile Automated Substance Abuse Evaluation (JASAE). Youth with minimal substance abuse history and/or treatment needs are identified for prevention services ("No Treatment") whereas those reporting the greatest history of abuse and treatment needs are targeted for substance abuse "Treatment" services.

³Colorado Client Assessment Record used to assess mental health needs within one month of commitment. Percentages are based on total New Commitment CCARs given and do not include missing data (based on valid percents).

**NEW COMMITMENT
AGE TRENDS BY ETHNICITY**

Age at Commitment

			12	13	14	15	16	17	18	19+	TOTAL NEW COMMITMENTS	Average Age at Commitment	
Ethnicity													
Anglo-American	FY 18-19	N	0	1	12	12	26	29	20	7	107	17.0	
		%	0.0%	0.9%	11.2%	11.2%	24.3%	27.1%	18.7%	6.5%	100.0%		
	FY 17-18	N	1	2	8	27	34	53	26	9	160	17.0	
		%	0.6%	1.3%	5.0%	16.9%	21.3%	33.1%	16.3%	5.6%	100.0%		
	FY 16-17	N	0	3	10	23	44	45	20	8	153	16.9	
		%	0.0%	2.0%	6.5%	15.0%	28.8%	29.4%	13.1%	5.2%	100.0%		
African-American	FY 18-19	N	0	0	2	11	18	20	14	1	66	17.0	
		%	0.0%	0.0%	3.0%	16.7%	27.3%	30.3%	21.2%	1.5%	100.0%		
	FY 17-18	N	0	0	4	10	18	30	16	2	80	17.1	
		%	0.0%	0.0%	5.0%	12.5%	22.5%	37.5%	20.0%	2.5%	100.0%		
	FY 16-17	N	0	1	3	12	14	23	7	0	60	16.9	
		%	0.0%	1.7%	5.0%	20.0%	23.3%	38.3%	11.7%	0.0%	100.0%		
Hispanic/Latino	FY 18-19	N	0	1	12	16	32	36	14	1	112	16.7	
		%	0.0%	0.9%	10.7%	14.3%	28.6%	32.1%	12.5%	0.9%	100.0%		
	FY 17-18	N	0	1	7	23	49	46	23	5	154	17.0	
		%	0.0%	0.6%	4.5%	14.9%	31.8%	29.9%	14.9%	3.2%	100.0%		
	FY 16-17	N	0	2	13	35	46	49	18	1	164	16.7	
		%	0.0%	1.2%	7.9%	21.3%	28.0%	29.9%	11.0%	0.6%	100.0%		
Native American	FY 18-19	N	0	0	0	1	1	0	1	0	3	16.8	
		%	0.0%	0.0%	0.0%	33.3%	33.3%	0.0%	33.3%	0.0%	100.0%		
	FY 17-18	N	0	0	0	0	1	2	0	0	3	17.4	
		%	0.0%	0.0%	0.0%	0.0%	33.3%	66.7%	0.0%	0.0%	100.0%		
	FY 16-17	N	0	0	1	0	0	0	1	0	2	16.5	
		%	0.0%	0.0%	50.0%	0.0%	0.0%	0.0%	50.0%	0.0%	100.0%		
Asian-American	FY 18-19	N	0	0	0	1	0	1	0	0	2	16.6	
		%	0.0%	0.0%	0.0%	50.0%	0.0%	50.0%	0.0%	0.0%	100.0%		
	FY 17-18	N	0	0	0	0	1	0	0	0	1	16.4	
		%	0.0%	0.0%	0.0%	0.0%	100.0%	0.0%	0.0%	0.0%	100.0%		
	FY 16-17	N	0	0	0	0	0	1	0	0	1	17.1	
		%	0.0%	0.0%	0.0%	0.0%	0.0%	100.0%	0.0%	0.0%	100.0%		
Other	FY 18-19	N	0	0	0	1	0	0	2	1	4	18.9	
		%	0.0%	0.0%	0.0%	25.0%	0.0%	0.0%	50.0%	25.0%	100.0%		
	FY 17-18	N	0	0	0	0	2	0	0	0	2	16.8	
		%	0.0%	0.0%	0.0%	0.0%	100.0%	0.0%	0.0%	0.0%	100.0%		
	FY 16-17	N	0	0	0	0	0	1	0	0	1	17.9	
		%	0.0%	0.0%	0.0%	0.0%	0.0%	100.0%	0.0%	0.0%	100.0%		

**NEW COMMITMENT
PROFILE TRENDS BY ETHNICITY**

		Prior Out-of-Home Placements			Runaway History		TOTAL NEW COMMITMENTS	Average Age at First Adjudication	
		None	One	Two or more	No Runaway History	Runaway History			
Ethnicity									
Anglo-American	FY 18-19	N	40	12	55	21	86	107	15.4
		%	37.4%	11.2%	51.4%	19.6%	80.4%		
	FY 17-18	N	45	30	85	32	128	160	15.3
		%	28.1%	18.8%	53.1%	20.0%	80.0%		
	FY 16-17	N	31	34	88	33	120	153	15.2
		%	20.3%	22.2%	57.5%	21.6%	78.4%		
African-American	FY 18-19	N	19	13	34	11	55	66	15.3
		%	28.8%	19.7%	51.5%	16.7%	83.3%		
	FY 17-18	N	20	18	42	20	60	80	15.5
		%	25.0%	22.5%	52.5%	25.0%	75.0%		
	FY 16-17	N	21	16	23	13	47	60	14.5
		%	35.0%	26.7%	38.3%	21.7%	78.3%		
Hispanic/Latino	FY 18-19	N	42	23	47	21	91	112	14.9
		%	37.5%	20.5%	42.0%	18.8%	81.3%		
	FY 17-18	N	59	42	53	34	120	154	14.8
		%	38.3%	27.3%	34.4%	22.1%	77.9%		
	FY 16-17	N	59	41	64	29	135	164	14.7
		%	36.0%	25.0%	39.0%	17.7%	82.3%		
Native American	FY 18-19	N	0	0	3	0	3	3	14.0
		%	0.0%	0.0%	100.0%	0.0%	100.0%		
	FY 17-18	N	2	1	0	0	3	3	16.3
		%	66.7%	33.3%	0.0%	0.0%	100.0%		
	FY 16-17	N	0	0	2	0	2	2	15.0
		%	0.0%	0.0%	100.0%	0.0%	100.0%		
Asian-American	FY 18-19	N	1	0	1	0	2	2	14.5
		%	50.0%	0.0%	50.0%	0.0%	100.0%		
	FY 17-18	N	0	0	1	0	1	1	15.0
		%	0.0%	0.0%	100.0%	0.0%	100.0%		
	FY 16-17	N	0	1	0	0	1	1	16.0
		%	0.0%	100.0%	0.0%	0.0%	100.0%		
Other	FY 18-19	N	0	1	2	0	3	3	17.0
		%	0.0%	33.3%	66.7%	0.0%	100.0%		
	FY 17-18	N	0	1	1	0	2	2	17.0
		%	0.0%	50.0%	50.0%	0.0%	100.0%		
	FY 16-17	N	1	0	0	0	1	1	13.0
		%	100.0%	0.0%	0.0%	0.0%	100.0%		

NEW COMMITMENT
TREATMENT NEED TRENDS BY ETHNICITY

		Assessed Substance Abuse Counseling Needs ¹			Assessed Mental Health Intervention Needs ²		TOTAL NEW COMS
		No Tx	Treatment	No Formal Intervention Required	Formal Intervention Required		
Ethnicity							
Anglo-American	FY 18-19	N	20	85	39	65	107
		%	18.7%	79.4%	37.5%	62.5%	
	FY 17-18	N	23	137	59	94	160
		%	14.4%	85.6%	38.6%	61.4%	
	FY 16-17	N	32	121	58	84	153
		%	20.9%	79.1%	40.8%	59.2%	
African-American	FY 18-19	N	11	55	19	43	66
		%	16.7%	83.3%	30.6%	69.4%	
	FY 17-18	N	19	61	20	53	80
		%	23.8%	76.3%	27.4%	72.6%	
	FY 16-17	N	12	48	12	43	60
		%	20.0%	80.0%	21.8%	78.2%	
Hispanic/Latino	FY 18-19	N	10	100	35	70	112
		%	8.9%	89.3%	33.3%	66.7%	
	FY 17-18	N	21	133	52	92	154
		%	13.6%	86.4%	36.1%	63.9%	
	FY 16-17	N	19	145	58	97	164
		%	11.6%	88.4%	37.4%	62.6%	
Native American	FY 18-19	N	1	2	1	2	3
		%	33.3%	66.7%	33.3%	66.7%	
	FY 17-18	N	0	3	2	1	3
		%	0.0%	100.0%	66.7%	33.3%	
	FY 16-17	N	0	2	0	2	2
		%	0.0%	100.0%	0.0%	100.0%	
Asian-American	FY 18-19	N	0	2	1	1	2
		%	0.0%	100.0%	50.0%	50.0%	
	FY 17-18	N	0	1	0	1	1
		%	0.0%	100.0%	0.0%	100.0%	
	FY 16-17	N	0	1	1	0	1
		%	0.0%	100.0%	100.0%	0.0%	
Other	FY 18-19	N	0	3	2	1	3
		%	0.0%	100.0%	66.7%	33.3%	
	FY 17-18	N	1	1	1	1	2
		%	50.0%	50.0%	50.0%	50.0%	
	FY 16-17	N	0	1	0	1	1
		%	0.0%	100.0%	0.0%	100.0%	

¹Substance abuse history and treatment needs are assessed within one month of commitment, using the Juvenile Automated Substance Abuse Evaluation (JASAE). Youth with minimal substance abuse history and/or treatment needs are identified for prevention services ("No Treatment") whereas those reporting the greatest history of abuse and treatment needs are targeted for substance abuse "Treatment" services. Percentages are based on total New Commitment JASAEs given and do not include missing data (valid percentages shown).

²Colorado Client Assessment Record (CCAR) is used to assess mental health needs within one month of commitment. Percentages are based on total New Commitment CCARs given and do not include missing data (valid percentages shown).

**NEW COMMITMENT
TRENDS BY ETHNICITY**

		Offense Type					Sentence Type						TOTAL NEW COMS	
		Person	Property	Drug	Weapon	Other	Non-Mandatory	Mandatory	Repeat	Violent	Aggravated	Data Not Available		
Ethnicity														
Anglo-American	FY 18-19	N	51	23	12	12	9	82	15	5	2	3	0	107
		%	47.7%	21.5%	11.2%	11.2%	8.4%	76.6%	14.0%	4.7%	1.9%	2.8%	0.0%	
	FY 17-18	N	72	57	13	10	8	136	12	2	4	6	0	
	%	45.0%	35.6%	8.1%	6.3%	5.0%	85.0%	7.5%	1.3%	2.5%	3.8%	0.0%		
FY 16-17	N	88	41	10	6	8	131	17	2	2	1	0	153	
	%	57.5%	26.8%	6.5%	3.9%	5.2%	85.6%	11.1%	1.3%	1.3%	0.7%	0.0%		
African-American	FY 18-19	N	27	19	1	16	3	42	9	3	3	9		0
		%	40.9%	28.8%	1.5%	24.2%	4.5%	63.6%	13.6%	4.5%	4.5%	13.6%	0.0%	
	FY 17-18	N	41	14	4	19	2	45	21	4	4	6	0	80
	%	51.3%	17.5%	5.0%	23.8%	2.5%	56.3%	26.3%	5.0%	5.0%	7.5%	0.0%		
FY 16-17	N	27	12	4	12	5	39	11	4	3	3	0	60	
	%	45.0%	20.0%	6.7%	20.0%	8.3%	65.0%	18.3%	6.7%	5.0%	5.0%	0.0%		
Hispanic/Latino	FY 18-19	N	47	28	5	23	9	78	12	8	4	9		1
		%	42.0%	25.0%	4.5%	20.5%	8.0%	69.6%	10.7%	7.1%	3.6%	8.0%	0.9%	
	FY 17-18	N	59	44	9	31	11	111	17	10	7	9	0	154
	%	38.3%	28.6%	5.8%	20.1%	7.1%	72.1%	11.0%	6.5%	4.5%	5.8%	0.0%		
FY 16-17	N	70	55	7	24	8	126	20	7	3	8	0	164	
	%	42.7%	33.5%	4.3%	14.6%	4.9%	76.8%	12.2%	4.3%	1.8%	4.9%	0.0%		
Native American	FY 18-19	N	1	2	0	0	0	2	1	0	0	0		0
		%	33.3%	66.7%	0.0%	0.0%	0.0%	66.7%	33.3%	0.0%	0.0%	0.0%	0.0%	
	FY 17-18	N	2	1	0	0	0	2	0	0	0	1	0	3
	%	66.7%	33.3%	0.0%	0.0%	0.0%	66.7%	0.0%	0.0%	0.0%	33.3%	0.0%		
FY 16-17	N	0	1	0	0	1	2	0	0	0	0	0	2	
	%	0.0%	50.0%	0.0%	0.0%	50.0%	100.0%	0.0%	0.0%	0.0%	0.0%	0.0%		
Asian-American	FY 18-19	N	1	1	0	0	0	1	0	1	0	0		0
		%	50.0%	50.0%	0.0%	0.0%	0.0%	50.0%	0.0%	50.0%	0.0%	0.0%	0.0%	
	FY 17-18	N	0	0	0	0	1	0	1	0	0	0	0	1
	%	0.0%	0.0%	0.0%	0.0%	100.0%	0.0%	100.0%	0.0%	0.0%	0.0%	0.0%		
FY 16-17	N	0	1	0	0	0	1	0	0	0	0	0	1	
	%	0.0%	100.0%	0.0%	0.0%	0.0%	100.0%	0.0%	0.0%	0.0%	0.0%	0.0%		
Other	FY 18-19	N	1	1	0	1	0	3	0	0	0	0		0
		%	25.0%	25.0%	0.0%	25.0%	0.0%	75.0%	0.0%	0.0%	0.0%	0.0%	0.0%	
	FY 17-18	N	0	1	0	0	1	1	1	0	0	0	0	2
	%	0.0%	50.0%	0.0%	0.0%	50.0%	50.0%	50.0%	0.0%	0.0%	0.0%	0.0%		
FY 16-17	N	0	1	0	0	0	1	0	0	0	0	0	1	
	%	0.0%	100.0%	0.0%	0.0%	0.0%	100.0%	0.0%	0.0%	0.0%	0.0%	0.0%		

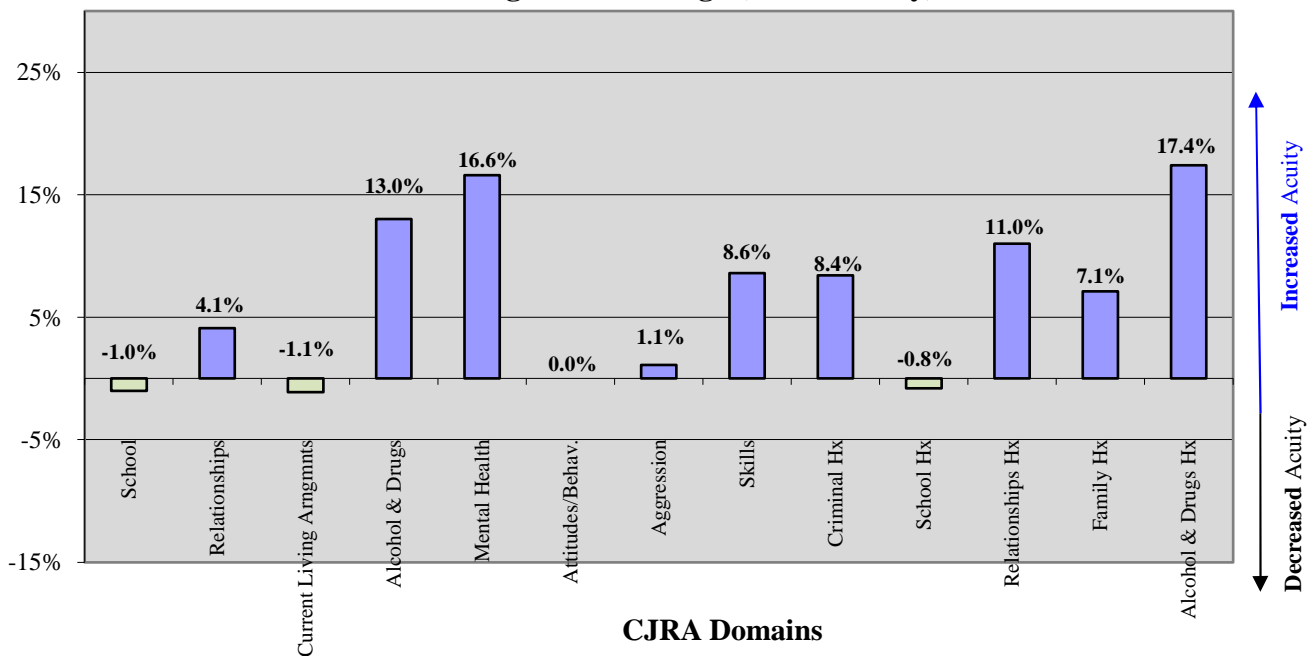
NEW COMMITMENT TRENDS

YOUTH ACUITY and RISK

Colorado Juvenile Risk Assessment (CJRA) Initial Assessment Trends

CJRA Domain Area	FY 14-15	FY 15-16	FY 16-17	FY 17-18	FY 18-19	Change in % over 5 FYs
DYNAMIC RISK FACTORS	% High Risk	% High Risk	% High Risk	% High Risk	% High Risk	
3b School (current)	57.7%	71.0%	64.7%	65.3%	56.7%	-1.0%
4b Use of Free Time (current)	N/A	N/A	N/A	N/A	N/A	N/A
5b Employment (current)	N/A	N/A	N/A	N/A	N/A	N/A
6b Relationships (current)	86.2%	87.3%	92.0%	93.0%	90.3%	4.1%
7b Current Living Arrangements	76.9%	65.4%	73.7%	73.9%	75.8%	-1.1%
8b Alcohol & Drugs (current)	58.4%	70.4%	77.8%	75.1%	71.4%	13.0%
9b Mental Health (current)	25.0%	29.0%	33.2%	33.9%	41.6%	16.6%
10 Attitudes/Behaviors	94.1%	93.7%	94.6%	94.9%	94.1%	0.0%
11 Aggression	79.6%	83.1%	78.7%	79.1%	80.7%	1.1%
12 Skills	75.8%	79.7%	79.3%	80.8%	84.4%	8.6%
STATIC RISK FACTORS						
1 Criminal History	77.8%	85.5%	84.2%	88.6%	86.2%	8.4%
2 Demographics	N/A	N/A	N/A	N/A	N/A	N/A
3a School (history)	27.6%	28.5%	25.0%	28.2%	26.8%	-0.8%
4a Use of Free Time (historic)	N/A	N/A	N/A	N/A	N/A	N/A
5a Employment (history)	N/A	N/A	N/A	N/A	N/A	N/A
6a Relationships (history of)	55.9%	57.5%	66.8%	68.3%	66.9%	11.0%
7a Family (history)	78.8%	82.6%	86.0%	86.4%	85.9%	7.1%
8a Alcohol & Drugs (history)	60.7%	69.7%	80.7%	83.2%	78.1%	17.4%
9a Mental Health (history)	N/A	N/A	N/A	N/A	N/A	N/A

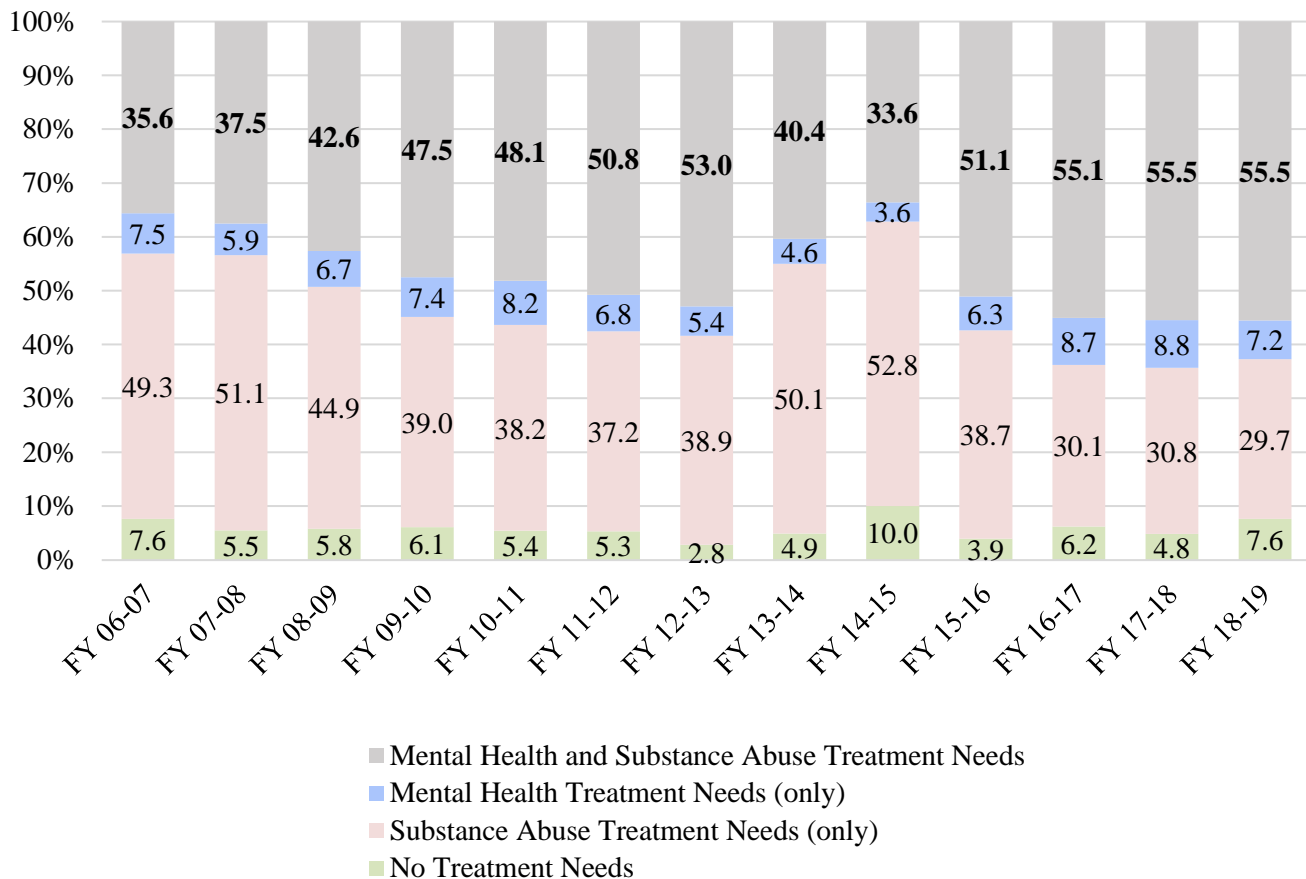
Change in Percentage (Youth Acuity)



NEW COMMITMENT TRENDS CO-OCCURRING TREATMENT NEEDS

	No Treatment Needs	Substance Abuse Treatment Needs	Mental Health Treatment Needs	Mental Health and Substance Abuse Treatment Needs	TOTAL
FY 06-07	7.6%	49.3%	7.5%	35.6%	100%
FY 07-08	5.5%	51.1%	5.9%	37.5%	100%
FY 08-09	5.8%	44.9%	6.7%	42.6%	100%
FY 09-10	6.1%	39.0%	7.4%	47.5%	100%
FY 10-11	5.4%	38.2%	8.2%	48.1%	100%
FY 11-12	5.3%	37.2%	6.8%	50.8%	100%
FY 12-13	2.8%	38.9%	5.4%	53.0%	100%
FY 13-14	4.9%	50.1%	4.6%	40.4%	100%
FY 14-15	10.0%	52.8%	3.6%	33.6%	100%
FY 15-16	3.9%	38.7%	6.3%	51.1%	100%
FY 16-17	6.2%	30.1%	8.7%	55.1%	100%
FY 17-18	4.8%	30.8%	8.8%	55.5%	100%
FY 18-19	7.6%	29.7%	7.2%	55.5%	100%

Percentage of Youth with Co-Occurring Treatment Needs*



*Valid percentages shown.

COMMITMENT POPULATION ADP TRENDS & SPECIAL POPULATIONS

YOUTH HISTORY	FY 2014-15		FY 2015-16		FY 2016-17		FY 2017-18		FY 2018-19	
	ADP	%	ADP	%	ADP	%	ADP	%	ADP	%
TOTAL ADP	740.7	100.0%	692.9	100.0%	486.9	100.0%	646.7	100.0%	577.6	100.0%
Prior Out-of-Home Placements										
None	226.9	30.6%	219.7	31.7%	187.2	28.7%	181.0	28.0%	177.0	30.6%
One	183.7	24.8%	140.8	20.3%	147.7	22.7%	150.6	23.3%	118.7	20.5%
Two or more	330.2	44.6%	332.3	48.0%	316.3	48.6%	315.0	48.7%	281.9	48.8%
TOTAL ADP	740.7	100.0%	692.9	100.0%	651.1	100.0%	646.7	100.0%	577.6	100.0%
Runaway History ¹										
No Runaway History	173.7	23.5%	155.4	22.4%	120.9	18.6%	117.4	18.2%	108.2	18.7%
Runaway History	567.0	76.5%	537.5	77.6%	530.2	81.4%	529.3	81.8%	469.4	81.3%
TOTAL ADP	740.7	100.0%	692.9	100.0%	651.1	100.0%	646.7	100.0%	577.6	100.0%

DYS SPECIAL POPULATIONS

Assessed Substance Abuse Counseling Needs ²										
No Treatment	84.8	11.5%	87.7	12.7%	90.2	13.9%	99.4	15.4%	91.8	15.9%
Treatment	655.9	88.5%	605.2	87.3%	560.7	86.1%	546.0	84.4%	481.4	83.3%
Data Not Available	0.0	0.0%	0.0	0.0%	0.2	0.0%	1.3	0.2%	4.4	0.8%
TOTAL ADP	740.7	100.0%	692.9	100.0%	651.1	100.0%	646.7	100.0%	577.6	100.0%
Assessed Mental Health Needs ³										
No Formal MH Intervention Required	387.5	52.3%	360.3	52.0%	274.1	42.1%	235.4	36.4%	204.4	35.4%
Formal MH Intervention Required	353.3	47.7%	326.8	47.2%	367.2	56.4%	404.9	62.6%	366.4	63.4%
Data Not Available	0.0	0.0%	5.8	0.8%	9.8	1.5%	6.3	1.0%	6.8	1.2%
TOTAL ADP	740.7	100.0%	692.9	100.0%	651.1	100.0%	646.7	100.0%	577.6	100.0%
Youth Requiring Sexual Offense Specific Treatment ⁴										
Youth Not Requiring S.O. Specific Tx	631.1	85.2%	601.2	86.8%	567.7	87.2%	569.0	88.0%	513.9	89.0%
Youth Requiring S.O. Specific Tx	109.6	14.8%	91.7	13.2%	83.4	12.8%	77.7	12.0%	63.7	11.0%
TOTAL ADP	740.7	100.0%	692.9	100.0%	651.1	100.0%	646.7	100.0%	577.6	100.0%

¹Refers to running away from a secure or nonsecure placement as well as from home during the 12 months prior to commitment.

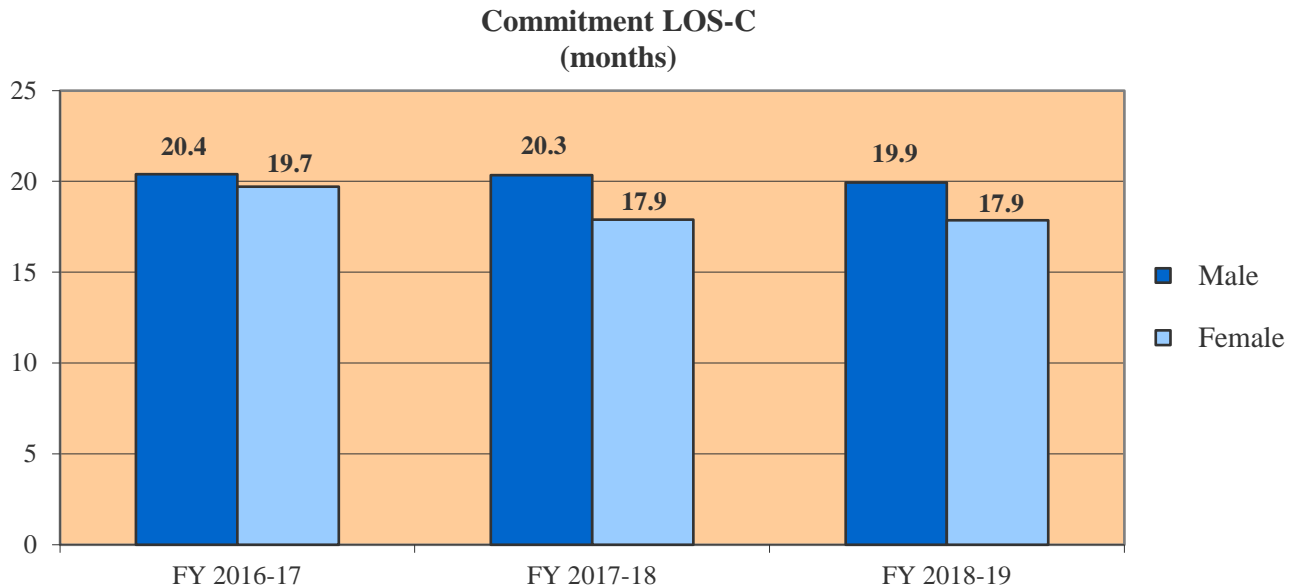
²Substance abuse history and treatment needs are assessed within one month of commitment, using the Juvenile Automated Substance Abuse Evaluation (JASAE). Percentages are based on total New Commitment JASAEs given and do not include missing data (valid percentages shown).

³Colorado Client Assessment Record (CCAR) is used to assess mental health needs within one month of commitment. Percentages are based on Total Commitment ADP of CCARs given at time of assessment.

⁴According to Sex Offender Management Board (SOMB) Standards.

COMMITMENT POPULATION LENGTH OF SERVICE (LOS-C) TRENDS

	FY 2016-17	FY 2017-18	FY 2018-19
GENDER			
Male	20.4	20.3	19.9
Female	19.7	17.9	17.9
Commitment LOS-C (in months)	20.3	19.9	19.6
ETHNICITY			
Anglo-American	18.6	17.8	19.8
African-American	22.8	23.1	21.8
Hispanic/Latino	20.6	20.5	18.6
Native American	22.6	13.4	9.9
Asian-American	20.3	12.0	21.8
Other	N/A	20.4	26.3
AGE¹			
11 Years	N/A	N/A	N/A
12 Years	56.8	N/A	32.3
13 Years	31.4	27.0	34.1
14 Years	27.5	27.0	24.0
15 Years	22.3	24.5	21.7
16 Years	19.9	20.1	19.5
17 Years	19.3	17.7	18.2
18 Years	16.3	16.5	15.9
19 Years	13.7	15.6	14.5



¹ Refers to Age at Commitment.

COMMITMENT OVERVIEW BY REGION & JUDICIAL DISTRICT

Region ¹	JD	New Commitments	ADP	LOS-C (months)
Central				
	1st	51	85.3	20.2
	2nd	38	82.7	23.0
	5th	4	6.1	20.5
	18th	46	92.4	21.5
Central Total		139	266.6	21.8
Northeast				
	8th	8	22.6	18.5
	13th	2	3.1	24.9
	17th	25	59.3	20.4
	19th	26	45.8	16.8
	20th	2	3.8	20.7
Northeast Total		63	134.6	18.8
Southern				
	3rd	3	0.5	N/A
	4th	35	87.4	19.7
	10th	7	15.0	16.6
	11th	1	5.1	14.9
	12th	2	1.8	16.8
	15th	2	4.7	8.9
	16th	1	0.6	N/A
Southern Total		51	115.0	17.9
Western				
	6th	3	4.7	14.4
	7th	5	9.1	15.8
	9th	1	5.7	24.9
	14th	1	1.7	12.0
	21st	28	35.1	18.2
	22nd	2	5.1	13.7
Western Total		40	61.4	17.5
Statewide Total		293	577.6	19.6

¹Region is defined here by the JD in which the client was committed. Regional totals are then a sum of their respective judicial districts.

COMMITMENT OVERVIEW

ETHNICITY BY REGION & JUDICIAL DISTRICT

Region	JD	Anglo-American		African-American		Hispanic / Latino		Native-American		Asian-American		Other		TOTAL	
		ADP	%	ADP	%	ADP	%	ADP	%	ADP	%	ADP	%	ADP	%
Central															
	1st	43.6	51.1%	3.6	4.3%	37.5	43.9%	0.2	0.3%	0.3	0.0%	0.0	0.0%	85.3	100%
	2nd	4.3	5.2%	35.5	42.9%	41.9	50.7%	1.0	1.2%	0.0	0.0%	0.0	0.0%	82.7	100%
	5th	2.4	39.2%	0.0	0.0%	3.7	60.8%	0.0	0.0%	0.0	0.0%	0.0	0.0%	6.1	100%
	18th	31.2	33.8%	41.4	44.8%	19.5	21.2%	0.0	0.0%	0.0	0.0%	0.2	0.2%	92.4	100%
Central Total		81.5	30.6%	80.6	30.2%	102.7	38.5%	1.2	0.5%	0.3	0.1%	0.2	0.1%	266.6	100%
Northeast															
	8th	15.2	67.5%	1.6	7.2%	5.7	25.3%	0.0	0.0%	0.0	0.0%	0.0	0.0%	22.6	100%
	13th	2.1	66.8%	0.0	1.5%	1.0	31.7%	0.0	0.0%	0.0	0.0%	0.0	0.0%	3.1	100%
	17th	21.5	36.2%	4.9	8.3%	32.8	55.4%	0.1	0.1%	0.0	0.0%	0.0	0.0%	59.3	100%
	19th	15.0	32.8%	1.7	3.7%	29.0	63.4%	0.0	0.0%	0.1	0.2%	0.0	0.0%	45.8	100%
	20th	2.2	57.0%	0.3	7.8%	1.4	35.2%	0.0	0.0%	0.0	0.0%	0.0	0.0%	3.8	100%
Northeast Total		56.0	41.6%	8.6	6.4%	69.9	51.9%	0.1	0.1%	0.1	0.1%	0.0	0.0%	134.6	100%
Southern															
	3rd	0.1	10.5%	0.0	0.0%	0.4	89.5%	0.0	0.0%	0.0	0.0%	0.0	0.0%	0.5	100%
	4th	26.1	29.9%	33.4	38.2%	24.7	28.2%	0.2	0.2%	0.9	1.1%	2.1	2.4%	87.4	100%
	10th	3.1	20.3%	2.3	15.5%	9.6	64.1%	0.0	0.0%	0.0	0.0%	0.0	0.0%	15.0	100%
	11th	4.5	88.1%	0.0	0.0%	0.6	11.9%	0.0	0.0%	0.0	0.0%	0.0	0.0%	5.1	100%
	12th	0.7	37.9%	0.0	0.0%	1.1	62.1%	0.0	0.0%	0.0	0.0%	0.0	0.0%	1.8	100%
	15th	1.7	37.2%	0.0	0.0%	2.9	62.8%	0.0	0.0%	0.0	0.0%	0.0	0.0%	4.7	100%
	16th	0.6	0.0%	0.0	0.0%	0.1	0.0%	0.0	0.0%	0.0	0.0%	0.0	0.0%	0.6	0%
Southern Total		36.7	31.9%	35.7	31.1%	39.4	34.2%	0.2	0.1%	0.9	0.8%	2.1	1.9%	115.0	100%
Western															
	6th	3.6	76.1%	0.4	8.3%	0.7	15.6%	0.0	0.0%	0.0	0.0%	0.0	0.0%	4.7	100%
	7th	7.4	81.4%	0.0	0.0%	1.4	15.8%	0.3	2.9%	0.0	0.0%	0.0	0.0%	9.1	100%
	9th	4.7	82.9%	0.0	0.0%	1.0	17.1%	0.0	0.0%	0.0	0.0%	0.0	0.0%	5.7	100%
	14th	1.7	100.0%	0.0	0.0%	0.0	0.0%	0.0	0.0%	0.0	0.0%	0.0	0.0%	1.7	100%
	21st	24.1	68.7%	2.2	6.4%	8.7	24.9%	0.0	0.0%	0.0	0.0%	0.0	0.0%	35.1	100%
	22nd	3.8	75.8%	0.0	0.0%	0.0	0.6%	1.2	23.6%	0.0	0.0%	0.0	0.0%	5.1	100%
Western Total		45.4	73.9%	2.6	4.3%	11.9	19.4%	1.5	2.4%	0.0	0.0%	0.0	0.0%	61.4	100%
Statewide Total		219.6	38.0%	127.5	22.1%	223.9	38.8%	2.9	0.5%	1.4	0.2%	2.3	0.4%	577.6	100%

PAROLE POPULATION TRENDS

10 Year Parole Trends

Fiscal Year	Clients Served ¹	Percentage Change +/-	New Intakes	Percentage Change +/-	ADP	Percentage Change +/-	LOS-P (months)	Percentage Change +/-
2009-10	1,270	0.0%	799	8.0%	446.9	2.4%	6.7	1.8%
2010-11	1,173	-7.6%	712	-10.9%	418.0	-6.5%	6.7	-0.4%
2011-12	1,056	-10.0%	617	-13.3%	363.0	-13.1%	7.0	3.9%
2012-13	958	-9.3%	532	-13.8%	334.4	-7.9%	6.7	-3.2%
2013-14	803	-16.2%	478	-10.2%	281.3	-15.9%	7.0	3.9%
2014-15	710	-11.6%	433	-9.4%	246.1	-12.5%	6.6	-5.5%
2015-16	690	-2.8%	412	-4.8%	246.3	0.1%	7.0	6.3%
2016-17	625	-9.4%	356	-13.6%	220.4	-10.5%	7.3	3.9%
2017-18	567	-9.3%	356	0.0%	209.6	-4.9%	6.9	-5.5%
2018-19	594	4.8%	364	2.2%	214.5	2.3%	7.0	0.9%

During Fiscal Year 2018-19, the parole population increased following eight straight years of population decline. The number of clients served increased by 4.8%, the average daily population increased by 2.3%, and the number of new intakes increased by 2.2%. The Length of Service (LOS-P) on parole was 7.0 months for FY 2018-19 discharges. Overall, LOS-P has remained relatively stable for the past decade, ranging from 6.6 months to 7.3 months.

Fiscal Year 2018-19 was the fifteenth full year following the implementation of Senate Bill 03-284, which shortened the mandatory parole length (from nine) to six months, effective May 1, 2003. Since the passage of SB 03-284, LOS-P has continued to slightly exceed the mandatory parole period of six months. For high risk youth, the Juvenile Parole Board has the statutory authority to extend parole for 90 days if determined to be “within the best interest of the juvenile and the public to do so,” or for an additional 15 months if there is a “finding of special circumstances” for youth adjudicated for certain offenses (e.g.: violent offenses, sex offenses, etc.).

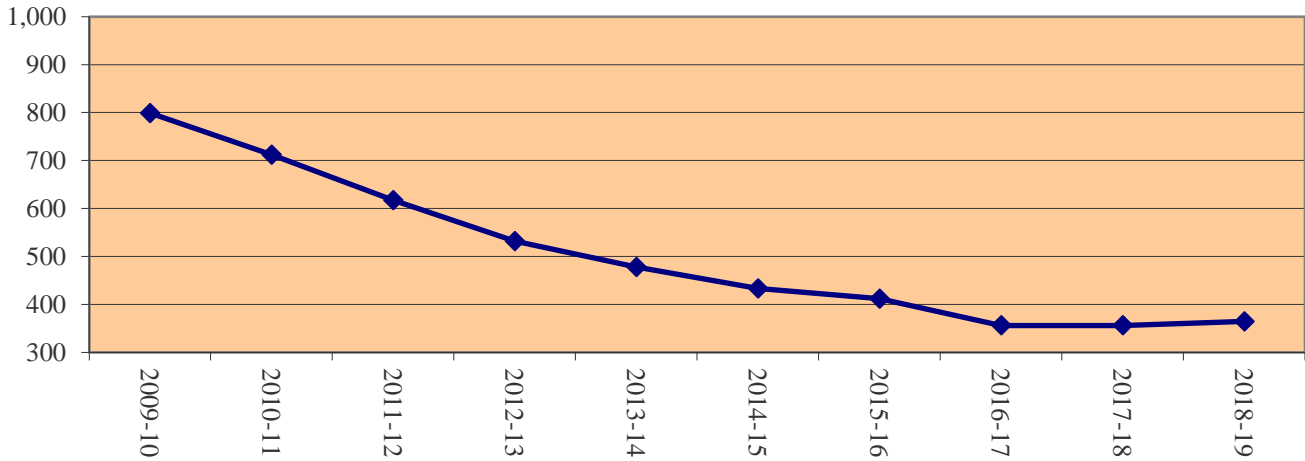
The Colorado Juvenile Parole Board (JPB) is established as a Type-1 transfer board and requires gubernatorial appointment. The board's creation, membership, and authority are defined in statute (24-1-105 C.R.S. and 19-2-206, C.R.S.). All rendering of findings during juvenile parole hearings **are formed independent** of the Executive Director of the Department of Human Services.

¹Clients served counts are unduplicated.

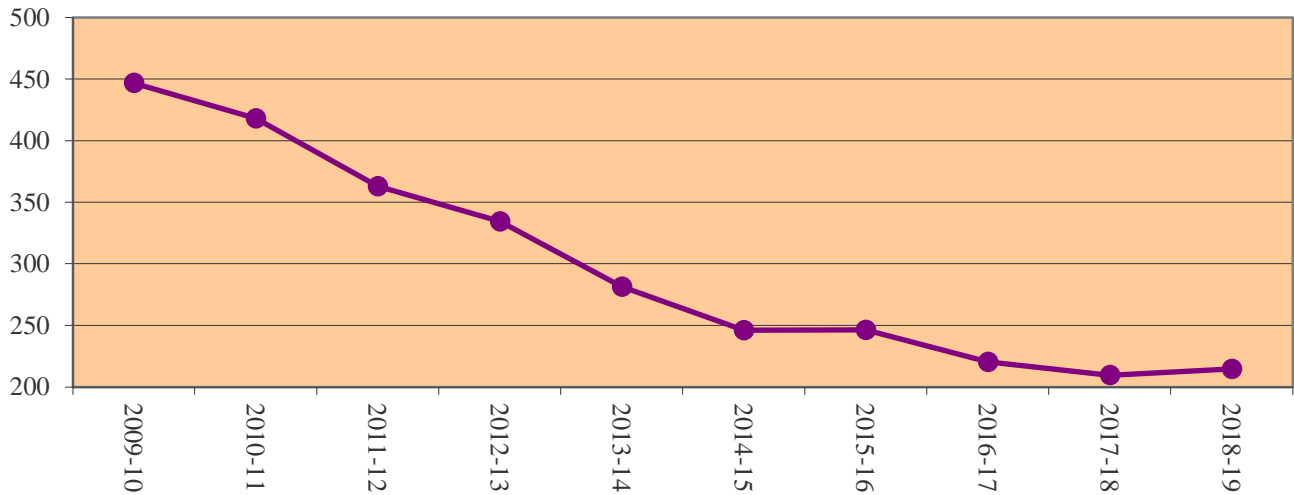
PAROLE POPULATION TRENDS

FY 2009-10 Through FY 2018-19

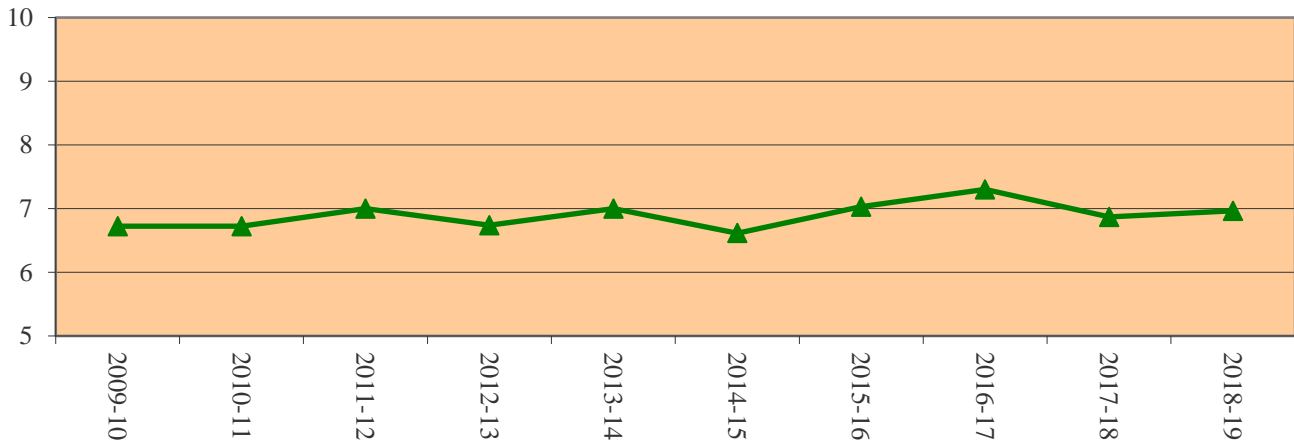
Trends in New Parole Intakes



Trends in Parole ADP



Trends in Parole LOS-P (months)



PAROLE POPULATION

DEMOGRAPHIC TRENDS

	FY 2016-17			FY 2017-18			FY 2018-19		
	LOS-P			LOS-P			LOS-P		
	ADP	%	(months)	ADP	%	(months)	ADP	%	(months)
REGION									
Central	86.6	39.3%	7.4	75.1	35.8%	6.8	85.8	40.0%	7.5
Northeast	68.8	31.2%	7.1	65.1	31.1%	6.8	58.3	27.2%	6.4
Southern	44.8	20.3%	7.4	41.7	19.9%	7.0	46.7	21.8%	6.5
Western	20.2	9.2%	6.9	27.7	13.2%	7.0	23.8	11.1%	7.1
TOTAL	220.4	100%	7.3	209.6	100%	6.9	214.5	100%	7.0
GENDER									
Male	193.4	87.8%	7.4	176.2	84.1%	7.0	184.9	86.2%	7.0
Female	26.9	12.2%	6.5	33.4	15.9%	6.2	29.6	13.8%	6.5
ETHNICITY									
Anglo American	79.0	35.9%	7.5	75.9	36.2%	6.7	85.0	39.6%	6.8
African-American	45.3	20.5%	7.1	36.9	17.6%	7.3	40.0	18.7%	7.5
Hispanic/Latino	92.6	42.0%	7.1	92.2	44.0%	6.9	87.2	40.6%	7.0
Native American	2.2	1.0%	7.1	2.2	1.1%	6.0	1.5	0.7%	6.0
Asian-American	1.2	0.6%	9.0	1.1	0.5%	6.0	0.1	0.1%	6.0
Other	0.0	0.0%	N/A	1.3	0.6%	6.0	0.7	0.3%	6.1
AGE¹									
13 Years	0.0	0.0%	N/A	0.0	0.0%	N/A	0.0	0.0%	6.1
14 Years	0.0	0.0%	11.1	0.6	0.3%	4.8	0.7	0.3%	6.1
15 Years	1.5	0.7%	9.4	9.0	4.3%	8.3	3.9	1.8%	7.2
16 Years	7.3	3.3%	6.3	25.9	12.4%	6.7	6.8	3.2%	6.6
17 Years	29.8	13.5%	7.4	38.4	18.3%	6.9	22.1	10.3%	7.4
18 Years	45.0	20.4%	7.2	71.1	33.9%	7.4	53.8	25.1%	7.3
19 Years +	136.8	62.1%	7.3	64.5	30.8%	6.4	127.2	59.3%	6.5
Average Age at Parole ²		18.3	years		18.4	years		18.3	years

¹LOS-P for each age category corresponds to age at the time of parole. ADP figures are based on the youth's age on the last day of the fiscal year, or at the time of discharge, whichever comes first.

²Based on new parole intakes.

DISCHARGE TRENDS

10 Year Discharge Trends

Fiscal Year	New Discharges	Percentage Change +/-	Average Age at Discharge	LOS-C&P ¹ (Months)	Percentage Change +/-
2009-10	823	-4.1%	18.9	25.8	5.3%
2010-11	786	-4.5%	18.8	25.0	-3.1%
2011-12	655	-16.7%	18.9	25.2	0.8%
2012-13	666	1.7%	19.0	26.2	4.0%
2013-14	556	-16.5%	19.0	26.3	0.4%
2014-15	476	-14.4%	19.1	27.1	3.0%
2015-16	444	-6.7%	19.1	26.8	-1.1%
2016-17	436	-1.8%	19.1	27.4	2.2%
2017-18	377	-13.5%	19.1	26.9	-1.8%
2018-19	395	4.8%	19.0	27.1	0.8%

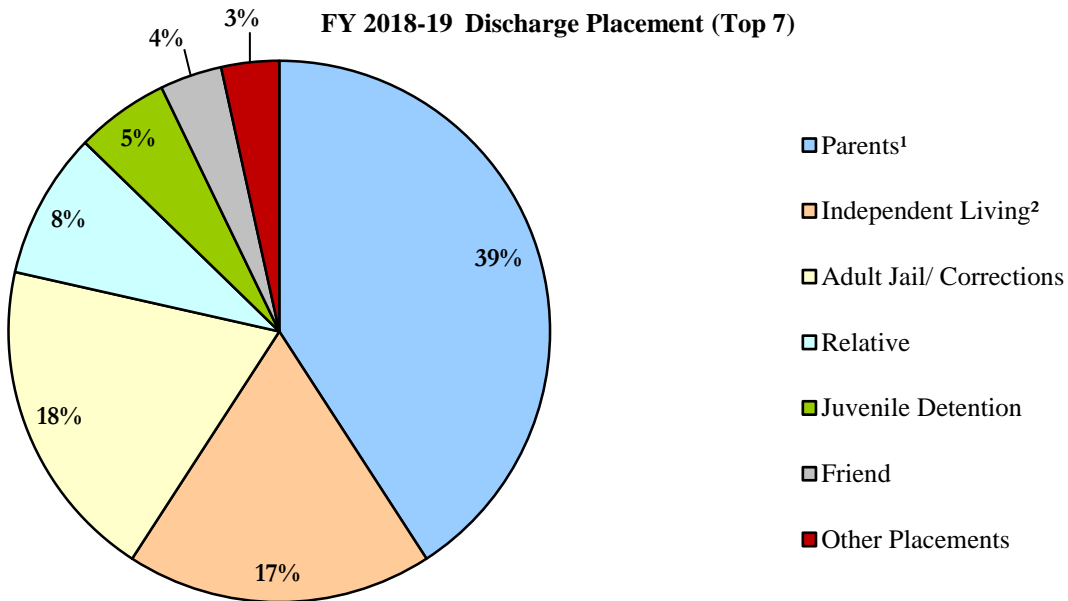
Discharge Trends, by Age at Discharge

Age	FY 2016-17		FY 2017-18		FY 2018-19	
	#	%	#	%	#	%
11	0	0%	0	0%	0	0%
12	0	0%	0	0%	0	0%
13	0	0%	0	0%	1	0%
14	1	0%	0	0%	1	0%
15	4	1%	4	1%	9	2%
16	25	6%	20	6%	16	4%
17	70	16%	55	16%	55	14%
18	95	22%	68	22%	93	24%
19	121	28%	130	28%	112	28%
20	78	18%	63	18%	74	19%
21	42	10%	37	10%	34	9%
Total	436	100%	377	100%	395	100%

¹LOS-C&P is the sum of LOS-C (commitment residential) and LOS-P (parole).

DISCHARGE TRENDS

DISCHARGED YOUTH	FY 2016-17		FY 2017-18		FY 2018-19	
	N	%	N	%	N	%
DISCHARGE PLACEMENT						
Parents ¹	202	46.3%	161	42.7%	154	39.0%
Independent Living ²	52	11.9%	59	15.6%	69	17.5%
Adult Jail/ Corrections	63	14.4%	66	17.5%	73	18.5%
Relative	38	8.7%	21	5.6%	33	8.4%
Juvenile Detention	22	5.0%	27	7.2%	21	5.3%
Friend	14	3.2%	14	3.7%	14	3.5%
Other Placements	18	4.1%	14	3.7%	13	3.3%
Transfer to Child Welfare	11	2.5%	4	1.1%	7	1.8%
Escape	2	0.5%	4	1.1%	1	0.3%
Homeless	5	1.1%	3	0.8%	8	2.0%
Shelter Care (Short Term)	2	0.5%	1	0.3%	0	0.0%
Inpatient Treatment (non-medical) ³	2	0.5%	1	0.3%	1	0.3%
Job Corps	2	0.5%	0	0.0%	0	0.0%
Deceased	1	0.2%	1	0.3%	0	0.0%
Unknown/Data Not Available	0	0.0%	1	0.3%	0	0.0%
Deported	2	0.5%	0	0.0%	1	0.3%
TOTAL DISCHARGES	436	100.0%	377	100.0%	395	100.0%



¹Includes: One Parent, Both Parents, Parent and Step-Parent, Step-Parent or Guardian.

²Includes: Self and Spouse.

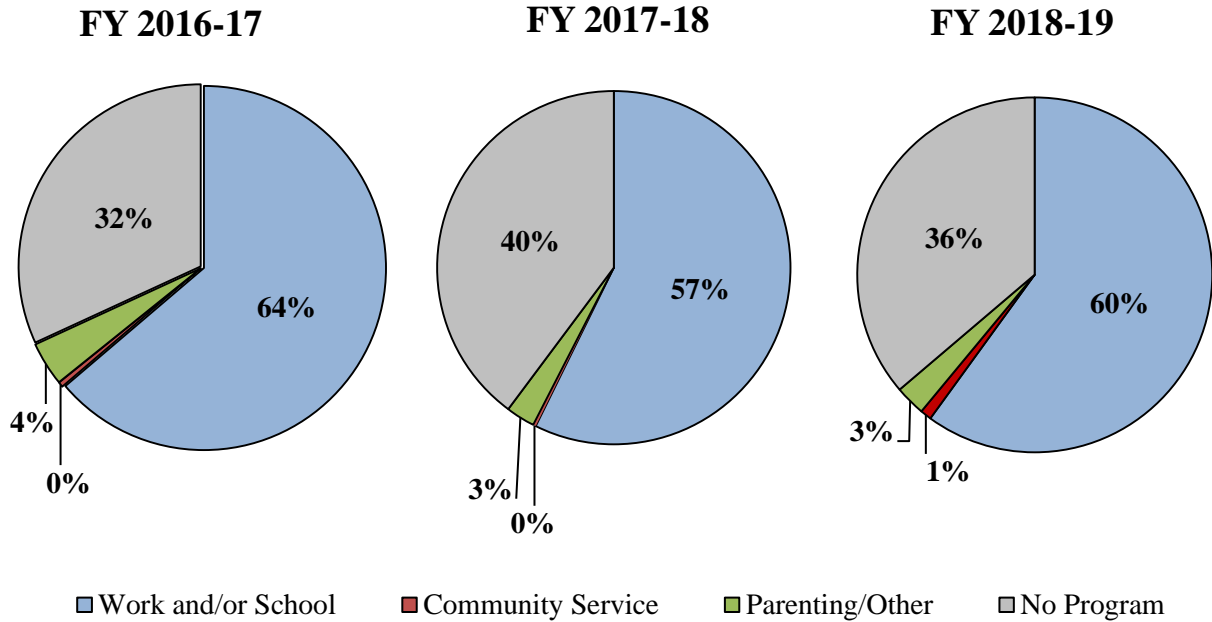
³Mental Health/Drug Alcohol.

DISCHARGE TRENDS

DISCHARGED YOUTH	FY 2016-17		FY 2017-18		FY 2018-19	
	N	%	N	%	N	%
PAROLE ADJUSTMENT AT DISCHARGE						
Satisfactory to Excellent	227	52.1%	167	44.3%	179	45.3%
Poor to Unsatisfactory	188	43.1%	184	48.8%	184	46.6%
Not on Parole at Time of Discharge ¹	21	4.8%	26	6.9%	32	8.1%
TOTAL	436	100.0%	377	100.0%	395	100.0%

PROGRAM STATUS AT DISCHARGE	FY 2016-17		FY 2017-18		FY 2018-19	
	N	%	N	%	N	%
Work Only	151	34.6%	115	30.5%	146	37.0%
School Only	42	9.6%	36	9.5%	31	7.8%
Community Service Only	2	0.5%	1	0.3%	4	1.0%
Work & School	83	19.0%	63	16.7%	59	14.9%
Work & Community Service	2	0.5%	1	0.3%	1	0.3%
Work, School, & Community Service	0	0.0%	1	0.3%	0	0.0%
Parenting	4	0.9%	2	0.5%	2	0.5%
Other	13	3.0%	8	2.1%	9	2.3%
No Program at Discharge	139	31.9%	150	39.8%	143	36.2%
TOTAL	436	100.0%	377	100.0%	395	100.0%

Program Status At Discharge by Fiscal Year



¹Youth may discharge directly to adult corrections, turn 21 prior to parole being granted, be deported, have their sentence terminated by the court, etc.

COMMITMENT POPULATION BY REGION¹

DEMOGRAPHIC TRENDS

Fiscal Year 2018-19

	CENTRAL			NORTHEAST			SOUTHERN			WESTERN		
	New Com	ADP	LOS-C (months)	New Com	ADP	LOS-C (months)	New Com	ADP	LOS-C (months)	New Com	ADP	LOS-C (months)
GENDER												
Male	102	218.0	22.0	60	131.0	19.4	43	102.7	17.9	36	51.0	17.3
Female	28	41.6	20.1	10	13.0	14.8	10	10.4	18.0	4	9.9	18.2
TOTAL	130	259.6	21.8	70	144.0	18.8	53	113.1	17.9	40	60.9	17.5
ETHNICITY												
Anglo-American	38	83.8	20.5	27	58.8	19.7	13	35.0	20.8	29	42.0	17.9
African-American	43	78.0	24.8	8	9.6	18.0	13	36.3	17.2	2	3.6	24.2
Hispanic/Latino	45	97.1	21.0	34	75.5	18.5	26	38.4	15.2	7	12.9	15.9
Native American	1	0.2	11.9	0	0.1	8.9	0	0.2	0.0	2	2.5	9.0
Asian-American	1	0.3	0.0	1	0.1	0.0	0	0.9	0.0	0	0.0	21.8
Other	2	0.2	0.0	0	0.0	0.0	1	2.1	42.2	0	0.0	10.4
AGE²												
11 Years	0	0.0	N/A	0	0.0	N/A	0	0.0	N/A	0	0.0	N/A
12 Years	0	0.0	53.8	0	0.0	N/A	0	0.0	N/A	0	0.0	10.9
13 Years	0	0.0	31.0	1	0.0	40.4	0	0.0	35.4	1	0.0	29.0
14 Years	11	2.2	33.0	9	1.7	15.6	3	1.0	14.7	3	1.4	19.5
15 Years	20	8.9	24.2	5	8.5	19.9	11	4.1	23.4	5	1.2	19.7
16 Years	29	27.2	21.6	22	17.4	18.9	11	13.2	18.5	15	10.9	16.4
17 Years	38	50.2	21.8	18	28.0	16.5	17	20.9	15.5	13	13.6	15.5
18 Years	26	65.3	14.2	12	47.8	19.5	10	41.0	15.3	3	21.0	16.5
19 Years and Older	6	105.8	13.5	3	40.6	13.3	1	32.9	16.6	0	12.9	20.7
Average Age at Commitment:	17.0 Years			16.9 Years			16.9 Years			16.6 Years		
SENTENCE TYPE												
Non-Mandatory	89	166.9	20.5	49	105.7	17.6	38	78.8	17.8	33	53.7	16.0
Mandatory	17	45.4	20.7	11	12.5	18.7	5	12.8	17.0	4	3.4	23.8
Repeat	5	7.7	22.7	9	11.0	16.9	0	0.5	22.0	3	1.9	32.8
Violent	6	9.6	40.7	1	2.6	0.0	2	9.9	22.5	0	0.0	0.0
Aggravated	13	30.0	33.2	0	12.2	47.9	8	11.0	0.0	0	2.0	0.0

¹Regional totals reported here may differ slightly from those in the Annual CYDC Report due to the definition of Region. Region is defined here by active client caseloads (e.g.: the region in which the client was served). When reporting information by Judicial District (JD), region is defined by the JD in which the client was committed, and subsequently, are a sum of their respective judicial districts.

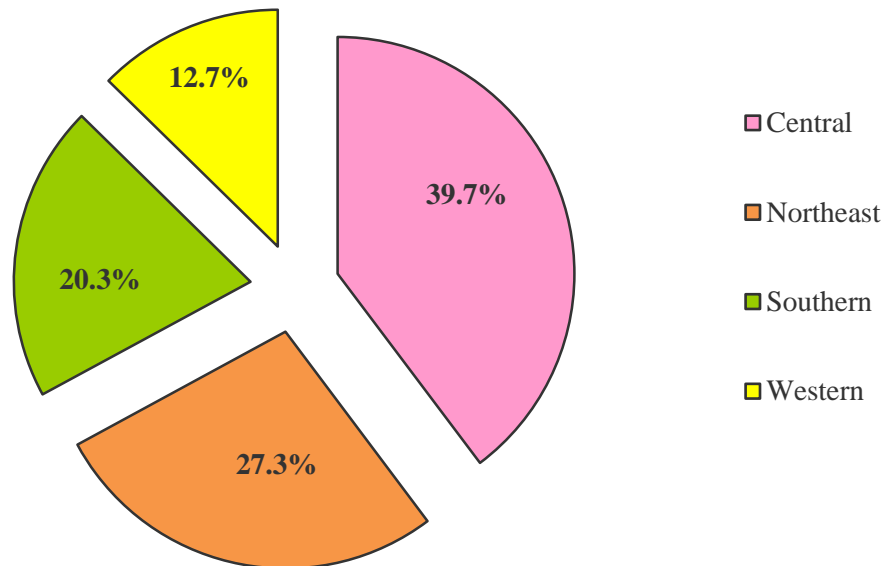
²Actual counts and LOS-C for each age category correspond to age at commitment. ADP figures for each age category are based on the youth's age on the last day of the fiscal year, or at the time of discharge, whichever comes first.

DISCHARGES BY REGION

Fiscal Year 2018-19

	CENTRAL		NORTHEAST		SOUTHERN		WESTERN	
	N	%	N	%	N	%	N	%
DISCHARGED YOUTH								
DISCHARGE PLACEMENT								
Parents	68	43.3%	39	36.1%	21	26.3%	26	52.0%
Adult Jail/ Corrections	27	17.2%	21	19.4%	21	26.3%	4	8.0%
Independent Living ¹	21	13.4%	23	21.3%	17	21.3%	8	16.0%
Juvenile Detention	2	1.3%	12	11.1%	7	8.8%	0	0.0%
Relative	18	11.5%	8	7.4%	4	5.0%	3	6.0%
Other Placements	5	3.2%	0	0.0%	5	6.3%	3	6.0%
Friend	3	1.9%	4	3.7%	4	5.0%	3	6.0%
Transfer to Child Welfare	7	4.5%	0	0.0%	0	0.0%	0	0.0%
Homeless	4	2.5%	1	0.9%	0	0.0%	3	6.0%
Deported	1	0.6%	0	0.0%	0	0.0%	0	0.0%
Inpatient Treatment (non-medical)	1	0.6%	0	0.0%	0	0.0%	0	0.0%
Escape	0	0.0%	0	0.0%	1	1.3%	0	0.0%
TOTAL	157	100%	108	100%	80	100%	50	100%

FY 2018-19 Percent of Discharged Youth by Region



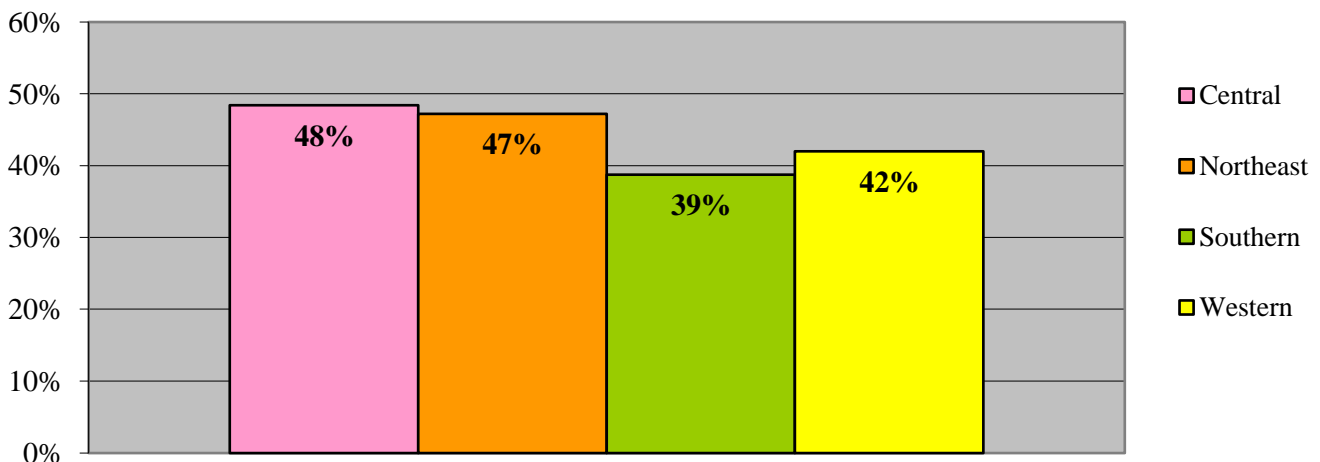
¹Includes: One Parent, Both Parents, Parent and Step-Parent, Step-Parent or Guardian.

DISCHARGES BY REGION

Fiscal Year 2018-19

	CENTRAL		NORTHEAST		SOUTHERN		WESTERN	
DISCHARGED YOUTH	N	%	N	%	N	%	N	%
PROGRAM STATUS AT DISCHARGE¹								
Work Only	73	46.5%	37	34.3%	21	26.3%	15	30.0%
School/Vocational Training Only	9	5.7%	9	8.3%	10	12.5%	3	6.0%
School/Work	21	13.4%	16	14.8%	7	8.8%	15	30.0%
Community Service Only	1	0.6%	1	0.9%	0	0.0%	2	4.0%
Work & Community Service	0	0.0%	1	0.9%	0	0.0%	0	0.0%
Work, School/Voc. Training, & Community Service	0	0.0%	0	0.0%	0	0.0%	0	0.0%
Parenting	0	0.0%	0	0.0%	2	2.5%	0	0.0%
Other	5	3.2%	3	2.8%	0	0.0%	1	2.0%
No Program at Discharge	48	30.6%	41	38.0%	40	50.0%	14	28.0%
TOTAL	157	100%	108	100%	80	100%	50	100%
PAROLE ADJUSTMENT AT DISCHARGE								
Satisfactory to Excellent	76	48.4%	51	47.2%	31	38.8%	21	42.0%
Poor to Unsatisfactory	69	43.9%	45	41.7%	43	53.8%	27	54.0%
Not on Parole at Time of Discharge	12	7.6%	12	11.1%	6	7.5%	2	4.0%
Data Not Available	0	0.0%	0	0.0%	0	0.0%	0	0.0%
PROGRAM TYPE								
	LOS (months)							
Secure	13.8		10.5		11.4		11.4	
Staff Supervised	6.1		6.7		4.5		4.1	
Community Residential	1.6		1.5		2.0		1.7	
Total Commitment (LOS-C)	21.8		18.8		17.9		17.5	
Parole (LOS-P)	7.5		6.4		6.5		7.1	
Total Commitment & Parole (LOS-C&P)	29.8		25.6		25.7		24.1	

'Satisfactory to Excellent' Parole Adjustment at Discharge by Region

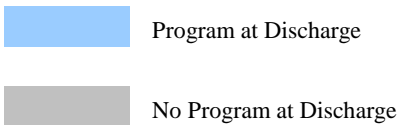


¹Regional trends on this factor are shown on the following page.

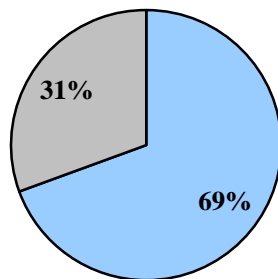
DISCHARGE TRENDS BY REGION

REGION			Program Status				Program Status		TOTAL DISCHRGs
			Work and/or School/Voc. Trng	Community Service	Parenting/ Other	No Program at Discharge	Program at Discharge ¹	No Program at Discharge	
Central	FY 18-19	N	103	1	5	48	109	48	157
		%	65.6%	0.6%	3.2%	30.6%	69.4%	30.6%	
	FY 17-18	N	67	0	3	56	70	56	126
		%	53.2%	0.0%	2.4%	44.4%	55.6%	44.4%	
	FY 16-17	N	120	1	6	57	127	57	184
		%	65.2%	0.5%	3.3%	31.0%	69.0%	31.0%	
Northeast	FY 18-19	N	63	1	3	41	67	41	108
		%	58.3%	0.9%	2.8%	38.0%	62.0%	38.0%	
	FY 17-18	N	80	0	5	37	85	37	122
		%	65.6%	0.0%	4.1%	30.3%	69.7%	30.3%	
	FY 16-17	N	79	0	6	39	85	39	124
		%	63.7%	0.0%	4.8%	31.5%	68.5%	31.5%	
Southern	FY 18-19	N	38	0	2	40	40	40	80
		%	47.5%	0.0%	2.5%	50.0%	50.0%	50.0%	
	FY 17-18	N	40	1	2	45	43	45	88
		%	45.5%	1.1%	2.3%	51.1%	48.9%	51.1%	
	FY 16-17	N	47	0	5	31	52	31	83
		%	56.6%	0.0%	6.0%	37.3%	62.7%	37.3%	
Western	FY 18-19	N	33	2	1	14	36	14	50
		%	66.0%	4.0%	2.0%	28.0%	72.0%	28.0%	
	FY 17-18	N	29	0	0	12	29	12	41
		%	70.7%	0.0%	0.0%	29.3%	70.7%	29.3%	
	FY 16-17	N	32	1	0	12	33	12	45
		%	71.1%	2.2%	0.0%	26.7%	73.3%	26.7%	

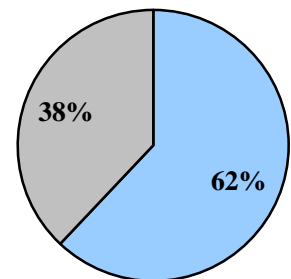
FY 2018-19 Discharges



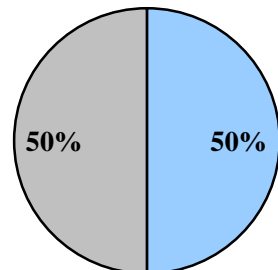
Central



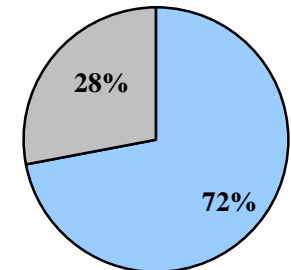
Northeast



Southern



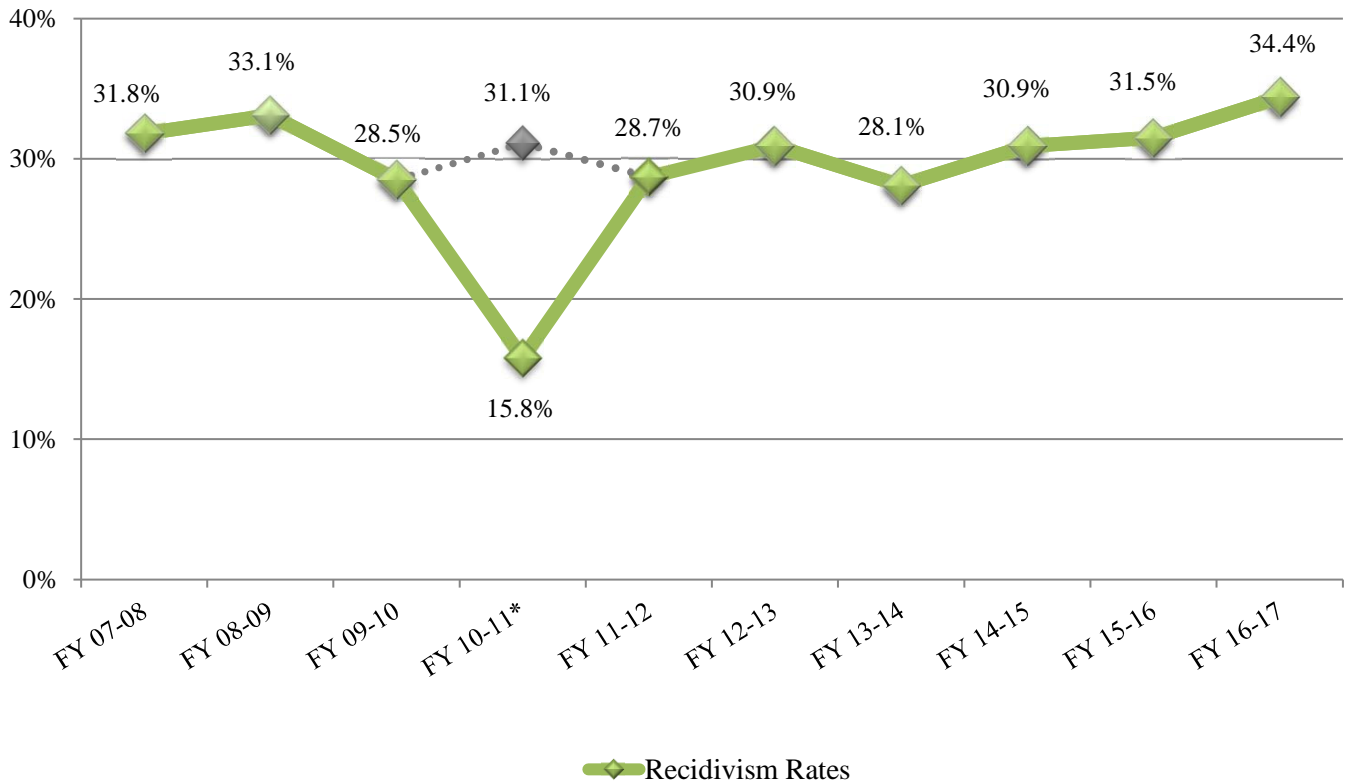
Western



¹Sum of Work and/or School/Voc. Trng, Community Service, Parenting/Other.

RECIDIVISM TRENDS

One-Year Post-Discharge Recidivism Rates FY 2007-08 Through FY 2016-17 Discharges



*New data system coding error resulted in an artificially low recidivism rate (15.8%) reported for this cohort initially; actual rate was 31.1%.

The most current DYS recidivism rates reported in this manual are associated with youth who discharged in FY 2016-17. These rates are published in the Division's annual Recidivism Report, released on July 1 of each year. This time lag allows the Division to track all youth, following their discharge (post-discharge), for a period of one year before reporting out recidivism rates. This trend graph shows that recidivism rates have ranged from 28.1% (FY 2013-14) to 34.4% (FY 2016-17).

Currently, five states and the District of Columbia define, measure, and report juvenile recidivism utilizing a research methodology *similar* to Colorado, thus providing six data points for a between-states comparison of recidivism rates. When comparing the one-year post-discharge recidivism rates between comparable states, Colorado's rate (34.4%) is the median of the performance range (20% - 46.7%). Maryland (20%), Idaho (29%), and the District of Columbia (32%) had rates that were lower than Colorado.