

Fiscal Year 2012 - 2013

Management Reference Manual



COLORADO

**Office of Children,
Youth & Families**

Division of Youth Corrections

October 2014

This manual provides the information most often requested on DYC client populations. Any questions concerning the data presented in this manual may be directed to the Research and Evaluation Unit, Division of Youth Corrections, 4255 S. Knox Court, Denver, CO 80236, or Kelli.Burmeister@state.co.us

Colorado Department of Human Services
Office of Children, Youth and Families
Division of Youth Corrections



October, 2014

<http://www.colorado.gov/cdhs/dyc>



COLORADO

**Office of Children,
Youth & Families**

Division of Youth Corrections

Al J. Estrada, Associate Director

The Colorado Department of Human Services, Office of Children, Youth, and Families, Division of Youth Corrections (DYC) is pleased to release the **FY 2012-13 Management Reference Manual**.

The manual is designed to answer many of the data questions that are commonly referred to the Division. This manual is arranged by youth population (i.e., *Senate Bill 91-94, Detention, Commitment, and Parole*) and provides annual trend data over several years. In addition to traditional demographic information, this manual attempts to provide a more comprehensive description of the kinds of youth of served. Youth measures such as criminogenic risk, delinquency history, and behavioral health treatment needs, assist the Division in understanding how the evolving youth population impacts system measures such as *Length of Service (LOS), Average Daily Population (ADP), and Recidivism*.

As an overview, the Division continues to evidence declines in youth population. For example, the detention population evidenced a decline in ADP of 2.9% over the previous fiscal year. The ADP for the commitment and parole populations similarly declined with 13.4% and 8.6%, respectively. Population declines in these populations mirror national juvenile justice trends (Hockenberry et al. 2013).

Other important highlights include:

- The Division implemented a capacity realignment which created legislation to reduce the statewide detention cap from 422 youth to 382 youth. The realignment also reduced the statewide commitment cap from 394 to 324, and consolidated assessment operations along the Front Range at the Mount View Youth Services Center.
- Despite the declines in youth populations, the acuity and complexity of these youth and their treatment service needs continue to rise. Based upon a five-year Colorado Juvenile Risk Assessment (CJRA) trend analyses, youth are scoring higher in risk on multiple (9 of 13) CJRA domains.
- The recidivism rate for committed youth in Colorado continues to be one of the lowest in the nation. Although the recidivism rate did show an increase over last year's findings, multi-year trend data still demonstrates that recidivism rates appear to be declining, suggesting an increased level of performance for the Division on this measure.

Thank you for your interest in the Division of Youth Corrections. Additional information is available on the Division's web site at <http://www.colorado.gov/cdhs/dyc>.

Sincerely,

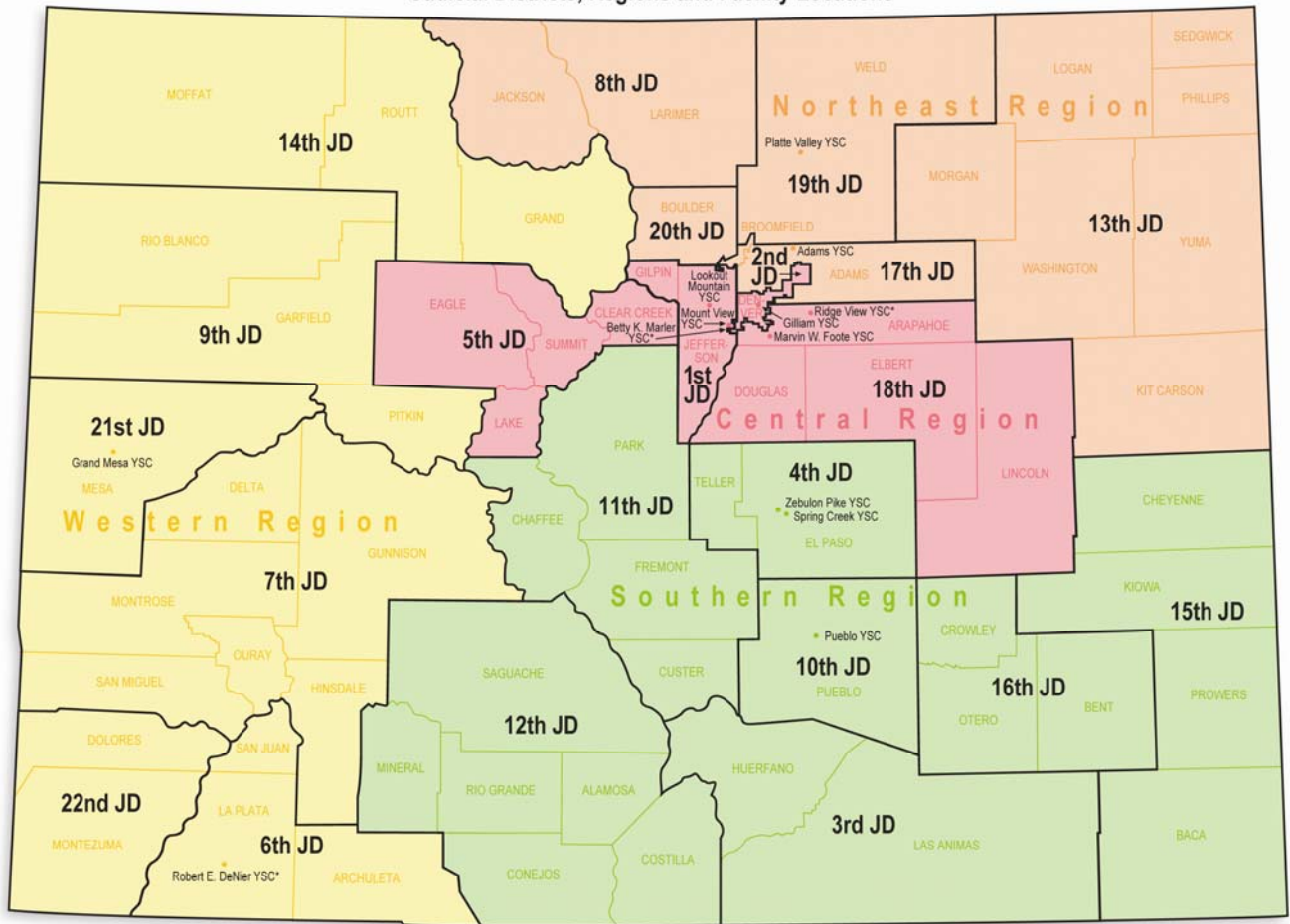
Al J. Estrada

Associate Director, Division of Youth Corrections



**Department of Human Services
Office of Children, Youth and Families
Division of Youth Corrections
Statewide Map**

Colorado Department of Human Services—Division of Youth Corrections
Judicial Districts, Regions and Facility Locations



*privately operated (state owned)

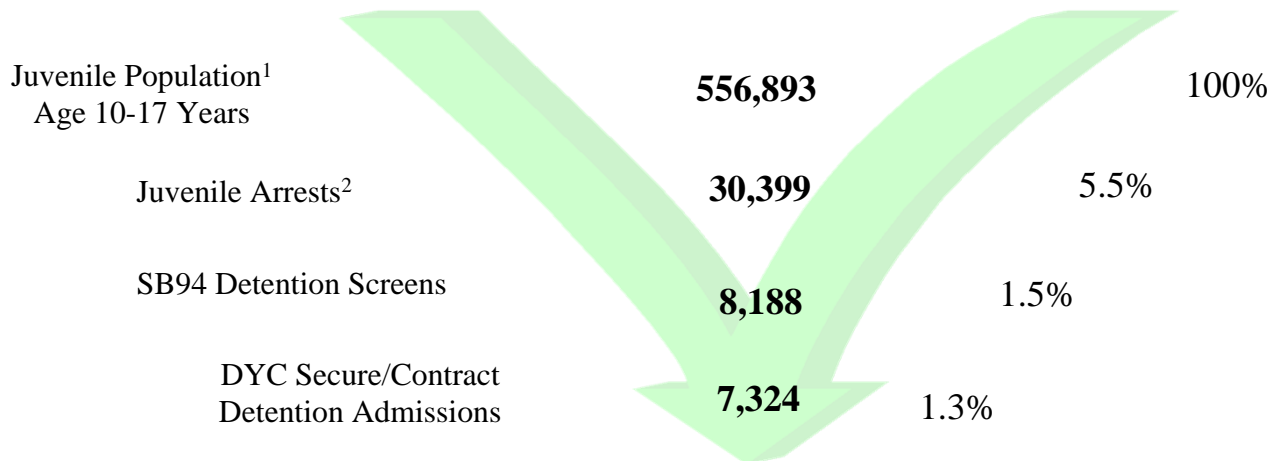
TABLE OF CONTENTS

Management Reference Manual Fiscal Year 2012-2013

Section I: Colorado State Totals	
Filtering Process to Detention	1
Filtering Process to Commitment	2
All Clients Population Data	3
Section II: Senate Bill 94 Program Services	
Program Outcomes, ADP & JDSAG Overview	4
Section III: Detention Program Services	
Detention Population Trends	5
Detention Maximum Bed Usage Trends	7
Detention Reason Detained Overview	8
Detention Population by Program	9
Detention Population Trends, ADP by Program	10
Detention Population Demographic Trends	11
Detention Admission Demographic Trends by Gender	13
Detention Admission Demographic Trends by Ethnicity	14
Detention Population Overview by Region & Judicial District	16
Section IV: Commitment Program Services	
Commitment Population Trends	17
New Commitment Trends by Previous Juvenile Justice Involvement	19
Commitment Population Trends by Program Type	20
Commitment Population, Clients Served & ADP by Program	21
New Commitment & ADP Demographic Trends	23
New Commitment Demographic Trends by Gender	24
New Commitment Demographic Trends by Ethnicity	27
New Commitment Trends by Youth Acuity (CJRA Risk)	31
New Commitment Trends by Commitment Classification	32
Commitment Population ADP Trends & Special Populations	33
Commitment Population Length of Service Trends	34
Commitment Overview by Region & Judicial District	35
Commitment Overview, Ethnicity by Region & Judicial District	36
Section V: Parole Program Services and Discharges	
Parole Population Trends	37
Parole Population Demographic Trends	39
Discharge Trends	40
Section VI: Regional Summaries	
Commitment Population Demographic Trends	42
Discharge Trends	43
Section VII: Recidivism	
Recidivism Trends	46
Glossary of Terms	Appendix

Fiscal Year 2012-2013

Juvenile Justice Filtering Process to Detention



	FY 2008-09	FY 2009-10	FY 2010-11	FY 2011-12	FY 2012-13
Age 10-17 population ¹	535,446	539,167	543,413	549,029	556,893
Juvenile Arrests ²	46,395	39,876	37,699	34,131	30,399
Arrests as % of population	8.7%	7.4%	6.9%	6.2%	5.5%
SB94 Detention Screens	10,987	9,853	9,399	8,729	8,188
Detention Admissions	10,295	9,102	8,435	7,751	7,324
Admissions as % of Population	1.9%	1.7%	1.6%	1.4%	1.3%

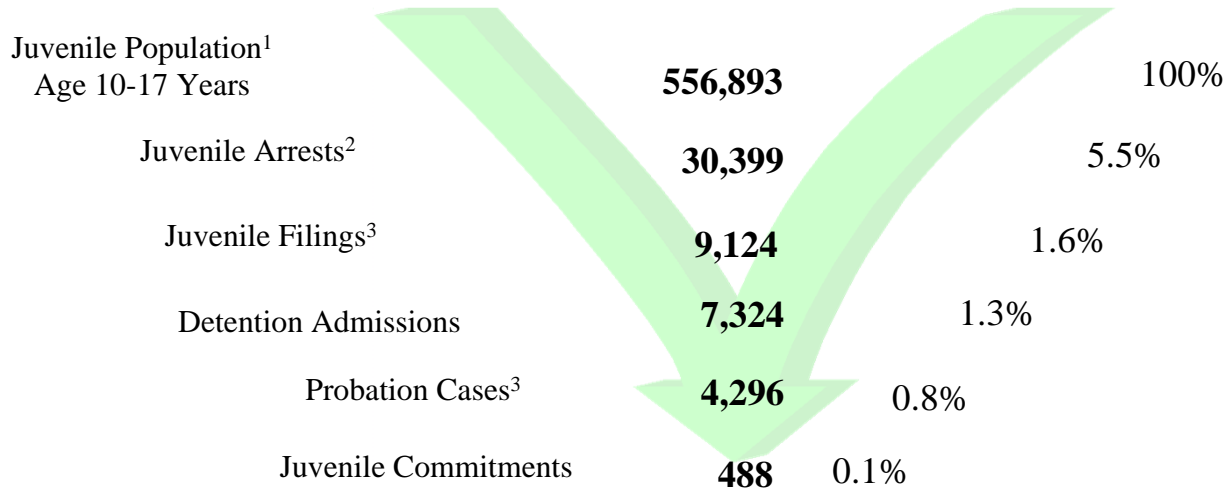
¹Colorado State Department of Local Affairs. Population data are reported for calendar years and based upon the 2000 and 2010 census. (<http://www.dola.state.co.us/cedis.html>).

²Colorado Bureau of Investigations, *Crime in Colorado 2012*.

COLORADO STATE TOTALS

Fiscal Year 2012-2013

Juvenile Justice Filtering Process to Commitment



	FY 2008-09	FY 2009-10	FY 2010-11	FY 2011-12	FY 2012-13
Age 10-17 Population ¹	535,446	539,167	543,413	549,029	556,893
Juvenile Arrests ²	46,395	39,876	37,699	34,131	30,399
Arrests as % of population	8.7%	7.4%	6.9%	6.2%	5.5%
Juvenile Delinquency Filings ³	13,668	11,640	11,286	10,019	9,124
Juvenile Detention Admissions	10,295	9,102	8,435	7,751	7,324
Number of New Probation Cases (reg. & ISP) ³	6,219	5,270	5,039	4,434	4,296
Number of New Commitments	760	743	646	533	488
Commitments as % of Population	0.1%	0.1%	0.1%	0.1%	0.1%

¹Colorado State Department of Local Affairs. Population data are reported for calendar years and based upon the 2000 and 2010 census.

(<http://www.dola.state.co.us/cedis.html>).

²Colorado Bureau of Investigations, *Crime in Colorado 2012*.

³Colorado Judicial Branch FY 2013 Annual Statistical Report.

ALL CLIENTS POPULATION DATA

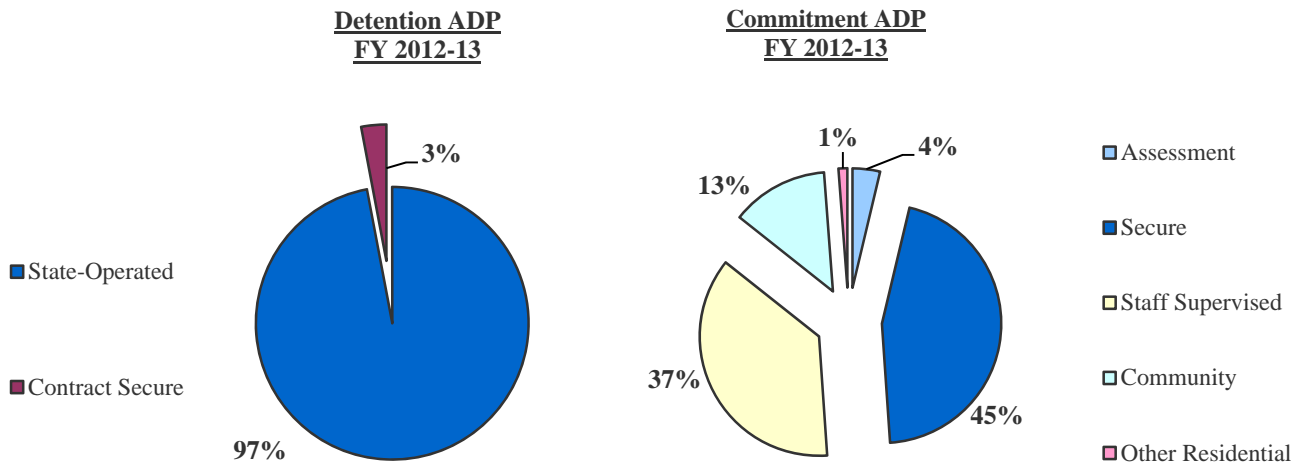
Fiscal Year 2012-2013

DETAINED YOUTH	Clients Served¹	New Admits	ADP	LOS
State-Operated	4,310	7,172	298.4	15.0 days
Contract Secure	117	152	9.1	21.4 days
Total Detained	4,401	7,324	307.6	15.1 days

COMMITTED YOUTH	Clients Served¹	New Commitments	ADP	LOS
Assessment	541		31.6	0.7 month
Secure	1,147		384.7	9.6 months
Staff Supervised	718		312.7	6.9 months
Community	369		111.8	2.5 months
Other Residential ²	55		10.2	0.1 month
Total Residential	1,786	488	851.0	19.2 months

PAROLED YOUTH	Clients Served¹	New Intakes	ADP	LOS
Total Paroled	958	532	334.4	6.7 months

STATEWIDE TOTAL	Clients Served¹	ADP	LOS
STATEWIDE TOTAL	6,063	1,493.0	26.2 months



¹Clients Served is an unduplicated count. Categorical totals are not a sum of individual program counts and are not available for all categories.

²Other Residential includes Group Homes, Job Corps, Hospitalizations, Shelter Care, etc.

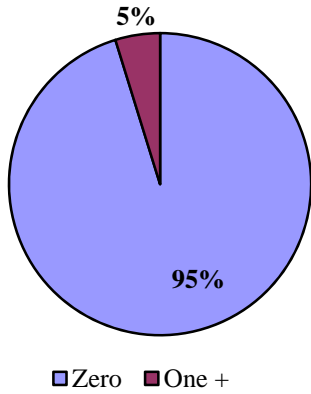
NOTE: Throughout the Reference Manual, category sums may vary slightly from given totals due to rounding differences.

PROGRAM OUTCOMES, ADP & JDSAG OVERVIEW

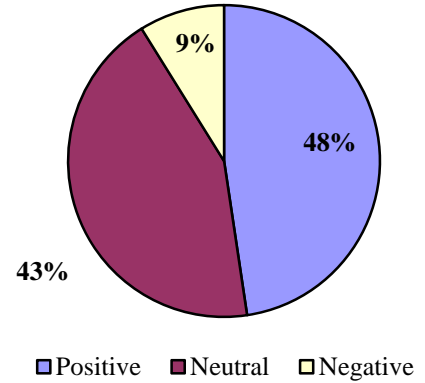
Fiscal Year 2012-2013

SB94 OUTCOMES

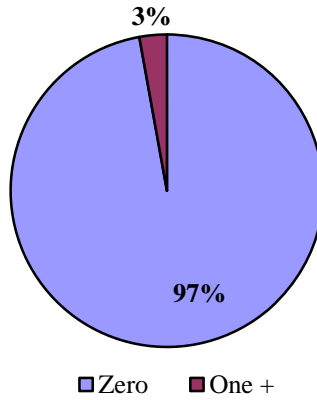
New Charges



Leave Reason

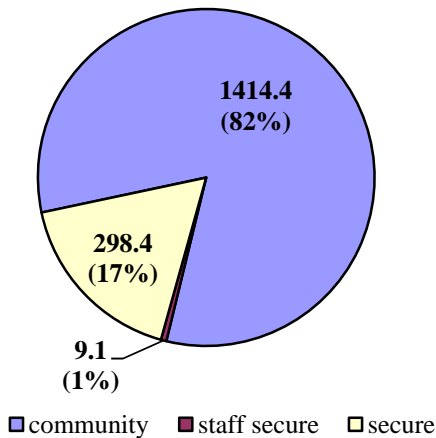


Failure To Appear (FTA)



ADP

SB94 ADP Breakdown



JDSAG¹ Results

Actual Placement

Secure	86.1%
Staff Secure	0.7%
Residential/Shelter	0.4%
Home w/ Services	7.2%
Release	5.7%
TOTAL	100.0%

¹Juvenile Detention Screening and Assessment Guide is required for each detention admission.

DETENTION POPULATION TRENDS

10 Year Detention Trends

Fiscal Year	Clients Served ¹	Percentage Change +/-	New Admits	Percentage Change +/-	ADP	Percentage Change +/-	LOS (Days)	Percentage Change +/-
2003-04	7,290	-11.6%	11,148	-20.7%	396.2	-20.3%	12.8	-16.3%
2004-05	7,252	-0.5%	10,970	-1.6%	402.0	1.5%	13.1	2.3%
2005-06	7,215	-0.5%	10,698	-2.5%	426.3	6.0%	14.1	7.6%
2006-07	7,195	-0.3%	10,591	-1.0%	414.9	-2.7%	14.0	-0.7%
2007-08	6,589	-8.4%	10,792	1.9%	408.8	-1.5%	13.7	-2.1%
2008-09	6,409	-2.7%	10,295	-4.6%	398.7	-2.5%	13.9	1.4%
2009-10	5,765	-10.0%	9,102	-11.6%	363.1	-8.9%	14.2	2.0%
2010-11	5,226	-9.3%	8,435	-7.3%	352.6	-2.9%	15.3	8.0%
2011-12	4,766	-8.8%	7,751	-8.1%	316.8	-10.2%	14.7	-4.2%
2012-13	4,401	-7.7%	7,324	-5.5%	307.6	-2.9%	15.1	3.3%

In response to declining populations and uncertain economic times, the Division made a recommendation to the legislature that the statewide detention cap be reduced once again, from 422 youth to 382 youth. This recommendation was accepted and went into effect April 1, 2013.

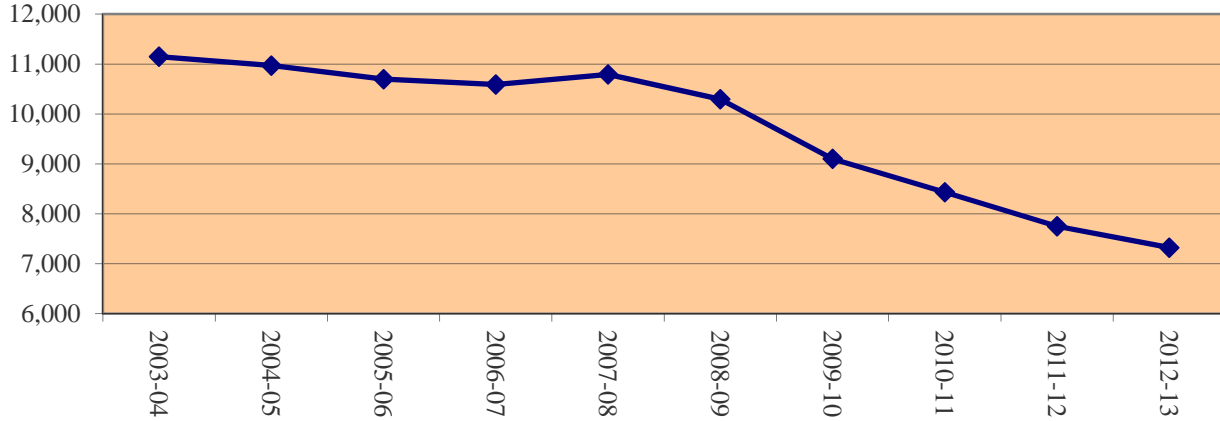
Detention ADP follows a seven year decline, with a decrease of 2.9% from the previous year. The average length of stay (LOS) for youth in detention increased from 14.7 days to 15.1 days, higher than its ten year average of 14.1 days. The number of clients served decreased by 7.7% from FY 2011-12, making this the tenth consecutive year of declining detention clients served. The number of new admissions also decreased (-5.5%) in FY 2012-13, a 25-year low. Most youth are detained in State-Operated facilities (97.0%), continuing a pattern of less reliance on Privately-Operated placements (3.0%).

¹Clients served counts are unduplicated.

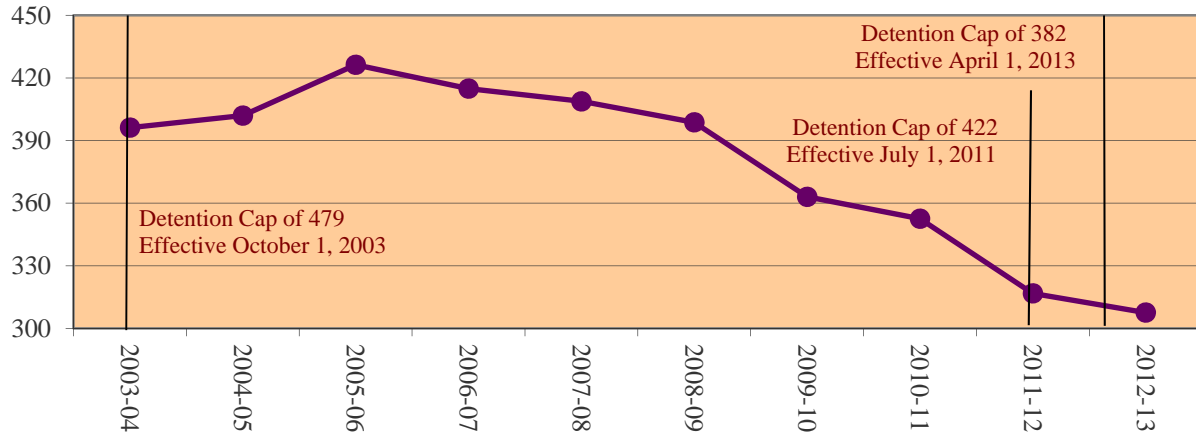
DETENTION POPULATION TRENDS

FY 2003-04 Through FY 2012-13

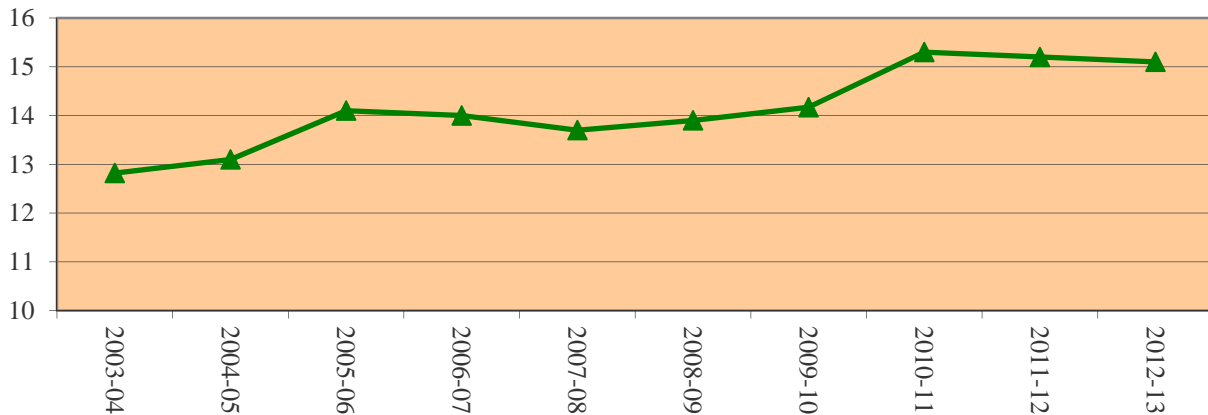
Trends in Detention Admissions



Trends in Detention ADP



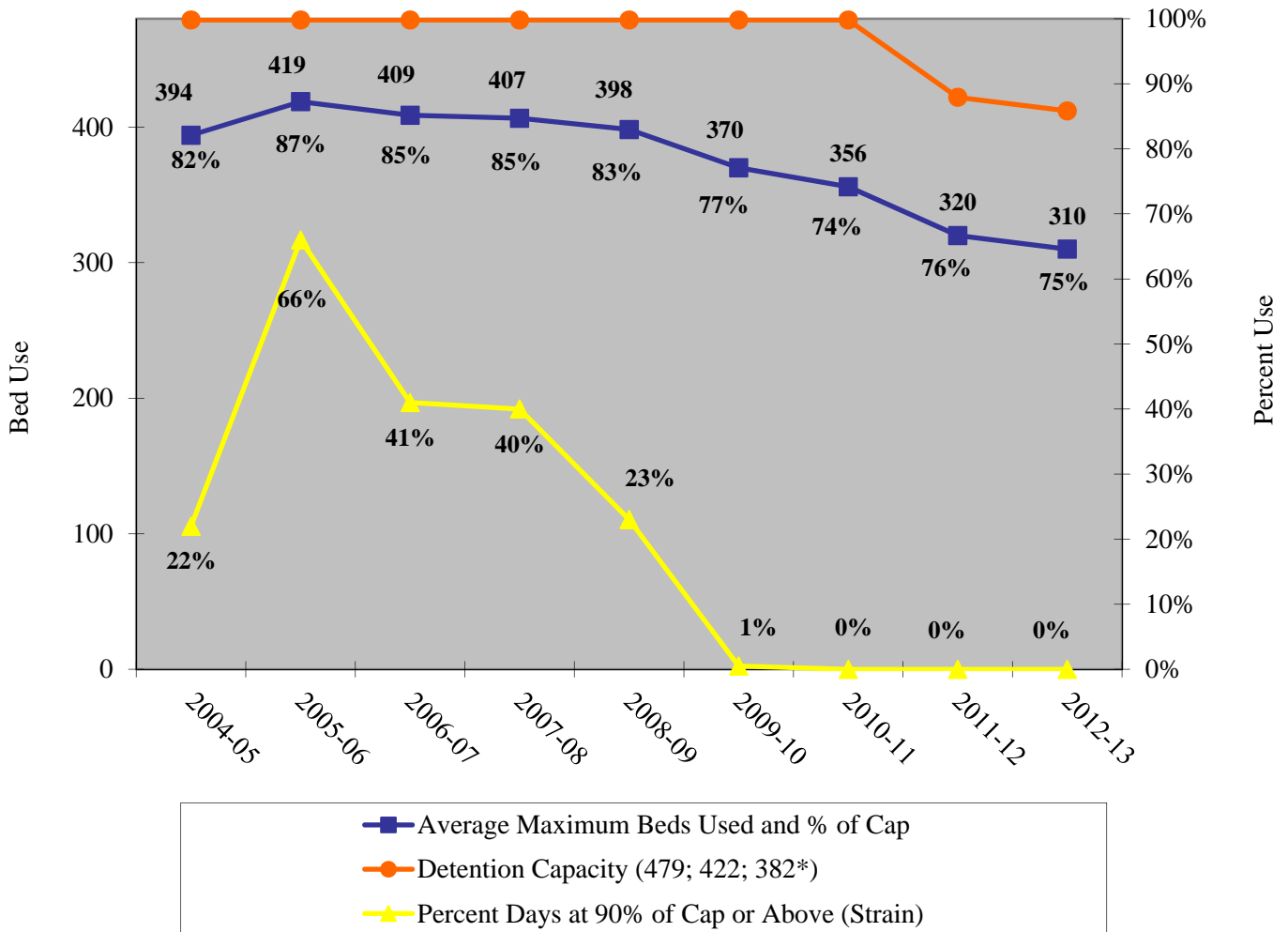
Trends in Detention LOS (Days)



DETENTION POPULATION TRENDS

FY 2004-05 Through FY 2012-13

AVERAGE MAXIMUM BED USAGE AND CAPACITY STRAIN TRENDS



Maximum Bed Usage represents the maximum number of youth in detention at any given point during the day. The graph above illustrates that during FY 2012-13, on average, the state was operating at a maximum daily count of 310 youth. This represents 75% of the weighted capacity limits (capacity limits changed from 422 to 382 mid-fiscal year). In FY 2005-06, this figure reached 87% of capacity with an average maximum of 419 youth in detention on any given day (with a capacity of 479).

The percent of days when maximum beds used was at or above 90% of the statewide capacity is used as a measure of statewide capacity "strain" involved in managing the daily use of detention beds. During FY 2012-13, DYC *did not* operate at 90% of capacity (or above). This is the seventh year of declining strain, after peaking 7 years prior in FY 2005-06, when the Division operated at or above 90% of the 479 capacity 66% of the time.

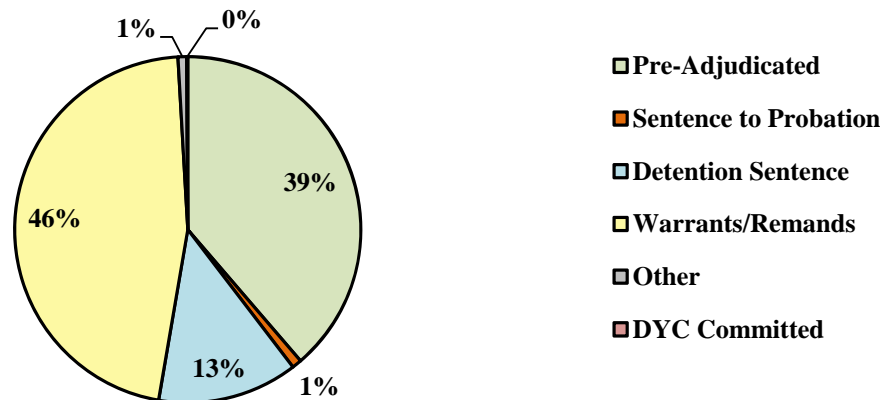
*Effective April 1, 2013

DETENTION REASON DETAINED OVERVIEW

FY 2011-12 Through FY 2012-13*

	2011-12	2012-13
1) Pre-Adjudicated	37.5 %	38.7 %
Felony	23.5 %	23.5 %
Misdemeanor	14.0 %	15.2 %
2) Sentence to Probation	1.1 %	0.9 %
Technical Violator	0.8 %	0.5 %
New Charges	0.3 %	0.4 %
3) Detention Sentence	15.2 %	13.1 %
Probation Sentence	1.6 %	0.5 %
Detention Sentence	10.4 %	9.7 %
Valid Court Order (VCO) Truancy	3.1 %	2.8 %
Awaiting DSS (Social Services) Placement	0.1 %	0.1 %
4) Warrants/Remands	45.4 %	46.4 %
Failure To Appear (FTA)	9.2 %	10.1 %
Failure To Comply (FTC)	36.2 %	36.3 %
5) Other	0.7 %	0.8 %
Interstate Compact on Juveniles (ICJ) Hold	0.1 %	0.1 %
Immigration Hold	0.0 %	0.0 %
No Bond Hold	0.4 %	0.7 %
Out-of-County Warrant	0.2 %	0.0 %
6) DYC Committed	0.1 %	0.1 %
Institutional	0.0 %	0.0 %
Parole	0.1 %	0.1 %

FY 2012-13



*Based on New Detention Admissions.

**DETENTION POPULATION
BY PROGRAM**

Fiscal Year 2012-2013

	Clients Served ¹	New Admits	ADP	LOS (Days)
<i>State Operated</i>				
Adams YSC	377	549	20.0	13.1
Gilliam YSC	710	1,062	56.2	19.3
Grand Mesa YSC	257	367	21.1	20.6
Marvin W. Foote YSC	901	1,272	55.2	16.7
Mount View YSC	614	832	30.5	13.7
Platte Valley YSC	851	1,434	51.0	13.1
Pueblo YSC	420	631	18.0	10.6
Spring Creek YSC	739	1,025	46.4	16.9
<i>Subtotal State Operated</i>	<i>4,310</i>	<i>7,172</i>	<i>298.4</i>	<i>15.0</i>
<i>Privately Operated</i>				
Brown Center	17	21	1.4	24.0
Robert DeNier	65	84	5.5	23.3
Youthtrack Alamosa (SLV ²)	35	47	2.2	18.6
<i>Subtotal Privately Operated</i>	<i>117</i>	<i>152</i>	<i>9.1</i>	<i>21.4</i>
STATEWIDE TOTAL	4,401	7,324	307.6	15.1

¹ Clients Served is an unduplicated count. Categorical totals are not a sum of individual program Clients Served.

² San Luis Valley.

DETENTION POPULATION TRENDS

ADP BY PROGRAM

	FY 2008-09	FY 2009-10	FY 2010-11	FY 2011-12	FY 2012-13
<i>State Operated</i>					
Adams YSC	23.5	22.3	20.9	19.1	20.0
Gilliam YSC	67.1	58.5	63.7	55.2	56.2
Grand Mesa YSC	19.3	20.4	20.2	20.5	21.1
Marvin Foote YSC	81.2	75.0	67.4	57.1	55.2
Mount View YSC	46.5	37.6	38.8	33.2	30.5
Platte Valley YSC	62.8	60.2	55.4	55.5	51.0
Pueblo YSC	30.3	27.7	25.5	18.2	18.0
Spring Creek YSC	46.0	44.9	45.8	48.6	46.4
<i>Subtotal State Operated</i>	<i>376.7</i>	<i>346.6</i>	<i>337.5</i>	<i>307.3</i>	<i>298.4</i>
<i>Privately Operated</i>					
Brown Center	1.5	1.1	1.4	0.8	1.4
Hilltop Youth Services	4.2	0.0	0.0	0.0	0.0
Prowers	0.0	0.0	0.0	0.0	0.0
Robert DeNier	7.9	6.4	5.9	5.6	5.5
Youthtrack Alamosa (SLV ¹)	3.0	3.5	3.2	3.0	2.2
<i>Subtotal Privately Operated</i>	<i>16.6</i>	<i>11.0</i>	<i>10.5</i>	<i>9.4</i>	<i>9.1</i>
STATEWIDE DETENTION	393.4	357.5	348.0	316.8	307.6

¹ San Luis Valley.

DETENTION POPULATION

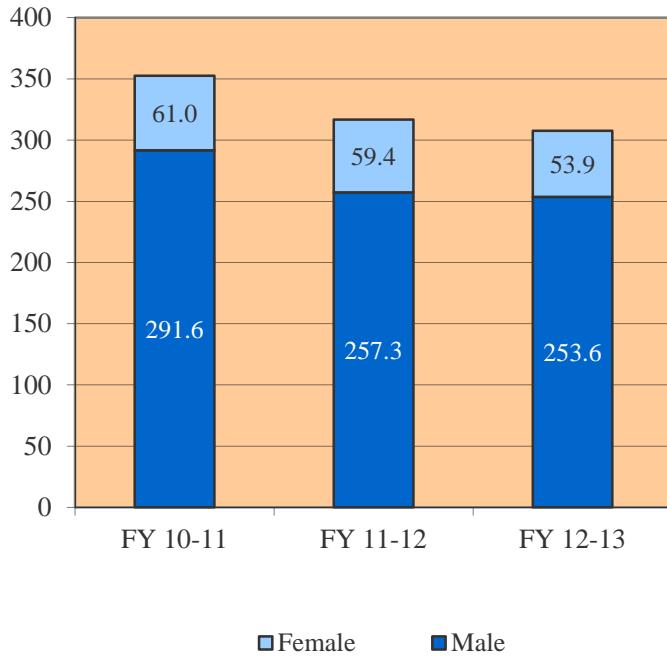
DEMOGRAPHIC TRENDS

	FY 2010-11				FY 2011-12				FY 2012-13			
	New Admits	%	ADP	LOS (days)	New Admits	%	ADP	LOS (days)	New Admits	%	ADP	LOS (days)
GENDER												
Male	6,590	78.1%	291.6	16.2	6,017	77.6%	257.3	15.3	5,685	77.6%	53.9	11.8
Female	1,845	21.9%	61.0	12.0	1,734	22.4%	59.4	12.4	1,639	22.4%	253.6	16.1
TOTAL	8,435	100%	352.6	15.3	7,751	100%	316.8	14.7	7,324	100%	307.6	15.1
ETHNICITY												
Anglo-American	3,551	42.1%	136.9	13.9	3,242	41.8%	121.6	13.5	2,931	40.0%	118.6	14.6
African-American	1,326	15.7%	64.2	18.3	1,148	14.8%	57.6	17.7	1,309	17.9%	62.1	17.2
Hispanic/Latino	3,257	38.6%	140.3	15.8	3,116	40.2%	127.8	14.7	2,827	38.6%	115.7	14.8
Native American	114	1.4%	3.9	12.6	98	1.3%	4.0	14.6	93	1.3%	4.0	15.0
Asian-American	81	1.0%	3.2	14.6	51	0.7%	1.9	12.9	62	0.8%	3.0	17.6
Other	106	1.3%	4.1	13.5	96	1.2%	3.8	14.8	102	1.4%	4.2	13.5
AGE												
10 Years	19	0.2%	0.2	3.8	12	0.2%	0.2	7.2	15	0.2%	0.1	3.4
11 Years	64	0.8%	1.8	9.3	64	0.8%	1.9	11.4	39	0.5%	0.7	7.0
12 Years	207	2.5%	7.5	12.4	204	2.6%	6.6	12.0	159	2.2%	5.2	11.8
13 Years	445	5.3%	17.5	15.1	468	6.0%	18.5	14.1	417	5.7%	15.3	13.5
14 Years	959	11.4%	38.0	14.4	917	11.8%	36.5	14.3	940	12.8%	38.3	14.5
15 Years	1,856	22.0%	74.7	15.1	1,641	21.2%	67.1	14.2	1,496	20.4%	63.6	15.1
16 Years	2,391	28.3%	108.8	16.5	2,180	28.1%	93.4	15.5	2,075	28.3%	94.9	16.4
17 Years	2,483	29.4%	104.0	15.2	2,260	29.2%	92.4	14.9	2,165	29.6%	89.3	15.1
18 Years	10	0.1%	0.1	4.3	4	0.1%	0.0	0.8	15	0.2%	0.1	1.3
19 Years +	1	0.0%	0.1	20.9	1	0.0%	0.0	0.7	3	0.0%	0.0	2.6
Average Age at Admission			16.1 Years		16.1 Years			16.1 Years				
Prior Admissions												
None	3,035	36.0%	87.2	10.4	2,707	34.9%	79.2	10.6	2,499	34.1%	73.5	10.6
One	1,689	20.0%	71.4	15.3	1,545	19.9%	57.2	13.5	1,410	19.3%	54.0	13.8
Two or more	3,711	44.0%	194.0	19.4	3,499	45.1%	180.3	18.4	3,415	46.6%	180.1	19.0
Program Type												
State Operated	8,080	95.8%	337.5	15.3	7,556	97.5%	307.3	14.6	7,172	97.9%	298.4	15.0
Privately Operated	355	4.2%	15.1	15.6	195	2.5%	9.4	17.8	152	2.1%	9.1	21.4

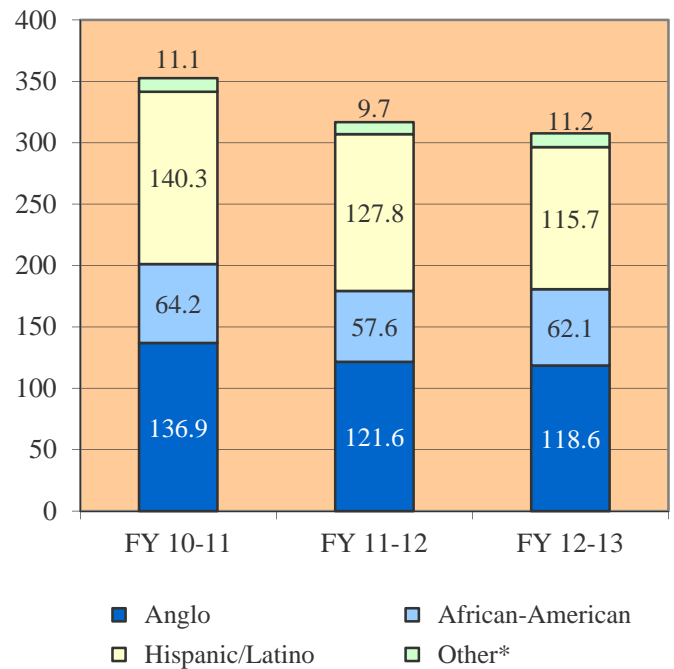
DETENTION POPULATION

DEMOGRAPHIC TRENDS

Detention ADP by Gender

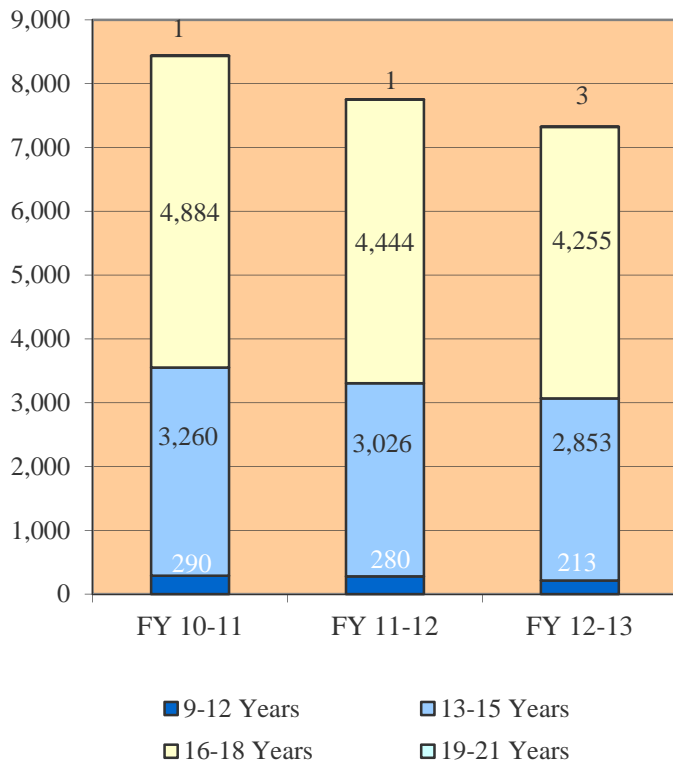


Detention ADP by Ethnicity

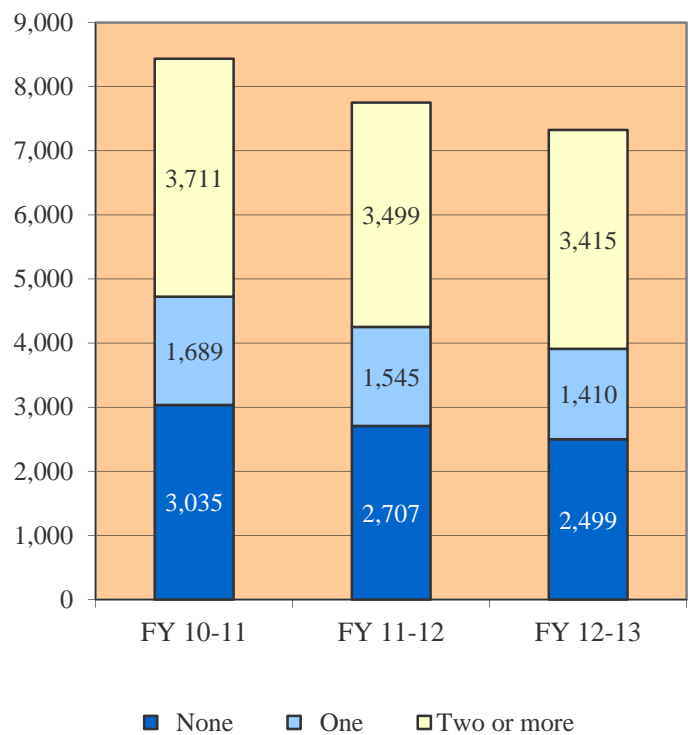


*Other includes Native American, Asian American, etc.

Detention Admissions by Age at Admission



Detention Admissions by Number of Prior Admissions

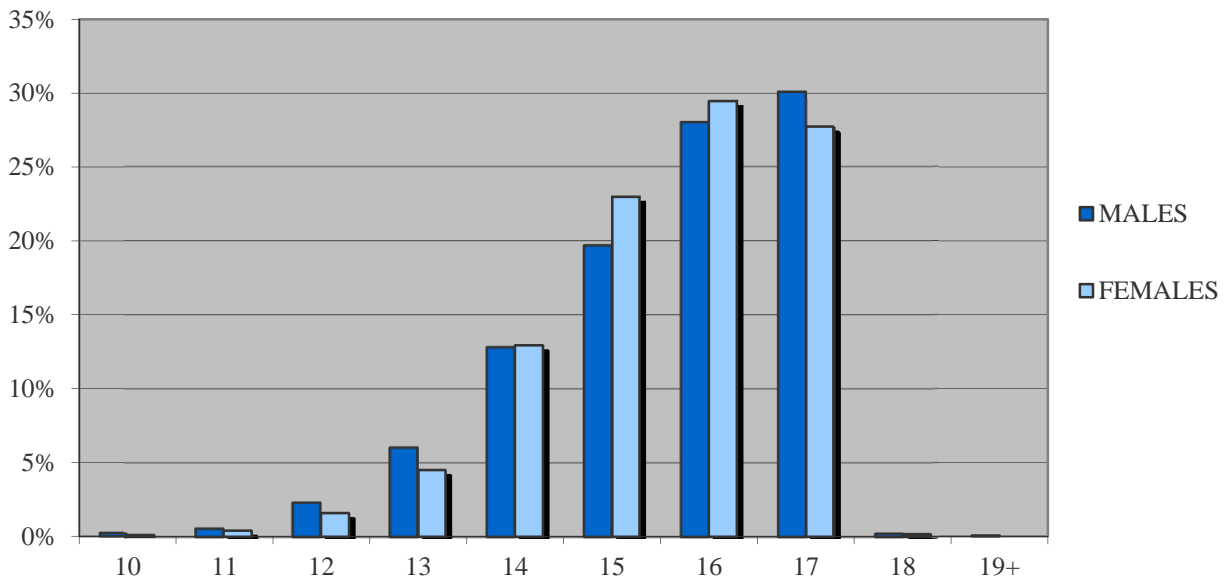


DETENTION ADMISSIONS

DEMOGRAPHIC TRENDS BY GENDER

	MALES						FEMALES					
	FY 2010-11		FY 2011-12		FY 2012-13		FY 2010-11		FY 2011-12		FY 2012-13	
	N	%	N	%	N	%	N	%	N	%	N	%
DEMOGRAPHIC DATA												
Ethnicity												
Anglo-American	2,701	41.0%	2,430	40.4%	2,202	38.7%	850	46.1%	812	46.8%	729	44.5%
African-American	1,028	15.6%	907	15.1%	1,036	18.2%	298	16.2%	241	13.9%	273	16.7%
Hispanic/Latino	2,619	39.7%	2,486	41.3%	2,246	39.5%	638	34.6%	630	36.3%	581	35.4%
Native American	86	1.3%	75	1.2%	73	1.3%	28	1.5%	23	1.3%	20	1.2%
Asian-American	69	1.0%	42	0.7%	44	0.8%	12	0.7%	9	0.5%	18	1.1%
Other	87	1.3%	77	1.3%	84	1.5%	19	1.0%	19	1.1%	18	1.1%
TOTAL NEW ADMISSIONS	6,590	100.0%	6,017	100.0%	5,685	100.0%	1,845	100.0%	1,734	100.0%	1,639	100.0%
Age at Admission												
10 Years	17	0.3%	9	0.1%	13	0.2%	2	0.1%	3	0.2%	2	0.1%
11 Years	58	0.9%	51	0.8%	32	0.6%	6	0.3%	13	0.7%	7	0.4%
12 Years	164	2.5%	169	2.8%	132	2.3%	43	2.3%	35	2.0%	27	1.6%
13 Years	357	5.4%	380	6.3%	343	6.0%	88	4.8%	88	5.1%	74	4.5%
14 Years	726	11.0%	714	11.9%	728	12.8%	233	12.6%	203	11.7%	212	12.9%
15 Years	1,435	21.8%	1,227	20.4%	1,119	19.7%	421	22.8%	414	23.9%	377	23.0%
16 Years	1,877	28.5%	1,630	27.1%	1,592	28.0%	514	27.9%	550	31.7%	483	29.5%
17 Years	1,951	29.6%	1,833	30.5%	1,711	30.1%	532	28.8%	427	24.6%	454	27.7%
18 Years	4	0.1%	3	0.0%	12	0.2%	6	0.3%	1	0.1%	3	0.2%
19 Years +	1	0.0%	1	0.0%	3	0.1%	0	0.0%	0	0.0%	0	0.0%
Avg. Age at Admission	16.1 Years		16.0 Years		16.1 Years		16.1 Years		16.0 Years		16.1 Years	
Prior Admissions												
None	2,281	34.6%	2,015	33.5%	1,873	32.9%	754	40.9%	692	42.2%	626	38.2%
One	1,297	19.7%	1,178	19.6%	1,087	19.1%	392	21.2%	367	22.4%	323	19.7%
Two or more	3,012	45.7%	2,824	46.9%	2,725	47.9%	699	37.9%	675	41.2%	690	42.1%

FY 2012-13 Age at Admission



DETENTION POPULATION

DEMOGRAPHIC TRENDS BY ETHNICITY

Age at Admission

			10	11	12	13	14	15	16	17	18	19+	TOTAL NEW ADMISSIONS	Average Age
Ethnicity														
Anglo-American	FY 12-13	N	14	13	62	164	309	592	855	917	3	2	2,931	16.1
		%	0.5%	0.4%	2.1%	5.6%	10.5%	20.2%	29.2%	31.3%	0.1%	0.1%	100.0%	
	FY 11-12	N	5	31	69	177	352	697	941	970	0	0	3,242	16.1
		%	0.2%	1.0%	2.1%	5.5%	10.9%	21.5%	29.0%	29.9%	0.0%	0.0%	100.0%	
	FY 10-11	N	10	34	99	168	403	773	985	1,075	3	1	3,551	16.1
		%	0.3%	1.0%	2.8%	4.7%	11.3%	21.8%	27.7%	30.3%	0.1%	0.0%	100.0%	
African-American	FY 12-13	N	0	9	35	75	203	274	346	365	2	0	1,309	16.0
		%	0.0%	0.7%	2.7%	5.7%	15.5%	20.9%	26.4%	27.9%	0.2%	0.0%	100.0%	
	FY 11-12	N	1	8	35	87	116	250	314	336	1	0	1,148	16.0
		%	0.1%	0.7%	3.0%	7.6%	10.1%	21.8%	27.4%	29.3%	0.1%	0.0%	100.0%	
	FY 10-11	N	2	7	33	84	128	300	406	364	2	0	1,326	16.0
		%	0.2%	0.5%	2.5%	6.3%	9.7%	22.6%	30.6%	27.5%	0.2%	0.0%	100.0%	
Hispanic/Latino	FY 12-13	N	1	14	55	162	408	563	803	810	10	1	2,827	16.0
		%	0.0%	0.5%	1.9%	5.7%	14.4%	19.9%	28.4%	28.7%	0.4%	0.0%	100.0%	
	FY 11-12	N	4	24	90	197	427	648	845	877	3	1	3,116	16.0
		%	0.1%	0.8%	2.9%	6.3%	13.7%	20.8%	27.1%	28.1%	0.1%	0.0%	100.0%	
	FY 10-11	N	7	23	71	178	397	705	925	946	5	0	3,257	16.1
		%	0.2%	0.7%	2.2%	5.5%	12.2%	21.6%	28.4%	29.0%	0.2%	0.0%	100.0%	
Native American	FY 12-13	N	0	0	4	7	6	23	26	27	0	0	93	16.1
		%	0.0%	0.0%	4.3%	7.5%	6.5%	24.7%	28.0%	29.0%	0.0%	0.0%	100.0%	
	FY 11-12	N	1	2	3	9	17	35	31	31	0	0	98	16.2
		%	1.0%	2.0%	3.1%	9.2%	17.3%	35.7%	31.6%	0.0%	0.0%	0.0%	100.0%	
	FY 10-11	N	0	0	1	5	12	33	28	35	0	0	114	16.2
		%	0.0%	0.0%	0.9%	4.4%	10.5%	28.9%	24.6%	30.7%	0.0%	0.0%	100.0%	
Asian-American	FY 12-13	N	0	0	0	1	3	16	22	20	0	0	62	16.4
		%	0.0%	0.0%	0.0%	1.6%	4.8%	25.8%	35.5%	32.3%	0.0%	0.0%	100.0%	
	FY 11-12	N	0	0	4	2	7	8	13	17	0	0	51	16.0
		%	0.0%	0.0%	7.8%	3.9%	13.7%	15.7%	25.5%	33.3%	0.0%	0.0%	100.0%	
	FY 10-11	N	0	0	2	4	6	18	22	29	0	0	81	16.3
		%	0.0%	0.0%	2.5%	4.9%	7.4%	22.2%	27.2%	35.8%	0.0%	0.0%	100.0%	
Other	FY 12-13	N	0	3	3	8	11	28	23	26	0	0	102	15.8
		%	0.0%	2.9%	2.9%	7.8%	10.8%	27.5%	22.5%	25.5%	0.0%	0.0%	100.0%	
	FY 11-12	N	1	1	4	2	6	21	32	29	0	0	96	16.1
		%	1.0%	1.0%	4.2%	2.1%	6.3%	21.9%	33.3%	30.2%	0.0%	0.0%	100.0%	
	FY 10-11	N	0	0	1	6	13	27	25	34	0	0	106	16.2
		%	0.0%	0.0%	0.9%	5.7%	12.3%	25.5%	23.6%	32.1%	0.0%	0.0%	100.0%	

DETENTION POPULATION

DEMOGRAPHIC TRENDS BY ETHNICITY

			Prior Admissions			TOTAL NEW ADMISSIONS
Ethnicity			None	One	Two or More	
Anglo-American	FY 12-13	N	1,106	573	1,252	2,931
		%	37.7%	19.5%	42.7%	100.0%
	FY 11-12	N	1,241	640	1,361	3,242
		%	38.3%	19.7%	42.0%	100.0%
	FY 10-11	N	1,341	688	1,522	3,551
		%	37.8%	19.4%	42.9%	100.0%
African-American	FY 12-13	N	360	229	720	1,309
		%	27.5%	17.5%	55.0%	100.0%
	FY 11-12	N	346	217	585	1,148
		%	30.1%	18.9%	51.0%	100.0%
	FY 10-11	N	396	262	668	1,326
		%	29.9%	19.8%	50.4%	100.0%
Hispanic/Latino	FY 12-13	N	911	571	1,345	2,827
		%	32.2%	20.2%	47.6%	100.0%
	FY 11-12	N	1,021	632	1,463	3,116
		%	32.8%	20.3%	47.0%	100.0%
	FY 10-11	N	1,183	668	1,406	3,257
		%	36.3%	20.5%	43.2%	100.0%
Native American	FY 12-13	N	39	17	37	93
		%	41.9%	18.3%	39.8%	100.0%
	FY 11-12	N	38	17	43	98
		%	38.8%	17.3%	43.9%	100.0%
	FY 10-11	N	45	27	42	114
		%	39.5%	23.7%	36.8%	100.0%
Asian-American	FY 12-13	N	22	8	32	62
		%	35.5%	12.9%	51.6%	100.0%
	FY 11-12	N	23	16	12	51
		%	45.1%	31.4%	23.5%	100.0%
	FY 10-11	N	23	17	41	81
		%	28.4%	21.0%	50.6%	100.0%
Other	FY 12-13	N	61	12	29	102
		%	59.8%	11.8%	28.4%	100.0%
	FY 11-12	N	38	23	35	96
		%	39.6%	24.0%	36.5%	100.0%
	FY 10-11	N	47	27	32	106
		%	44.3%	25.5%	30.2%	100.0%

DETENTION POPULATION OVERVIEW
BY REGION & JUDICIAL DISTRICT

Region	JD	NEW ADMISSIONS	PERCENT HIGH RISK (CJRA) ¹	ADP	LOS (days)
Central					
	1st	763	42.1%	26.0	12.1
	2nd	1,093	35.3%	57.2	18.2
	5th	40	15.6%	2.7	22.1
	18th	1,159	33.7%	51.3	15.8
Central Total		3,055	36.1%	137.2	15.8
Northeast					
	8th	421	51.5%	15.4	13.1
	13th	103	41.8%	4.3	15.5
	17th	655	27.3%	23.4	11.7
	19th	587	20.7%	23.8	14.4
	20th	327	42.9%	7.5	7.7
Northeast Total		2,093	32.2%	74.4	12.3
Southern					
	3rd	24	18.2%	0.8	10.3
	4th	901	26.4%	41.3	16.5
	10th	468	39.4%	11.2	8.4
	11th	172	37.0%	6.7	13.7
	12th	53	35.6%	2.4	17.3
	15th	36	41.4%	2.2	15.5
	16th	50	42.9%	1.8	13.5
Southern Total		1,704	30.1%	66.3	13.8
Western					
	6th	46	52.0%	3.4	24.8
	7th	71	65.1%	5.9	25.1
	9th	66	54.7%	3.7	17.6
	14th	16	100.0%	0.8	16.7
	21st	235	33.6%	11.9	17.0
	22nd	38	60.7%	2.1	18.1
Western Total		472	45.4%	27.8	19.1
Other ²				1.8	
Statewide Total		7,324	32.3%	307.6	15.1

¹High risk for recidivism on the Colorado Juvenile Risk Assessment (CJRA) Pre-Screen instrument; excludes missing data (missing = 17% statewide).

²DYC measures ADP by judicial district based on a maximum of three reasons detained per client. The "other" ADP comes from clients who exceed three reasons detained.

COMMITMENT POPULATION TRENDS

10 Year Commitment Trends

Fiscal Year	Clients Served ¹	Percentage Change +/-	New Commits	Percentage Change +/-	Commitment ADP ²	Percentage Change +/-	LOS (Months)	Percent Change +/-
2003-04	2,840	5.6%	924	12.1%	1,385.8	4.4%	18.9	-3.1%
2004-05	2,974	4.7%	950	2.8%	1,453.5	4.9%	18.8	-0.5%
2005-06	3,233	8.7%	933	-1.8%	1,453.4	0.0%	18.2	-3.2%
2006-07	3,149	-2.6%	827	-11.4%	1,424.9	-2.0%	19	4.4%
2007-08	2,700	-14.3%	795	-3.9%	1,287.9	-9.6%	18.5	-2.6%
2008-09	2,513	-6.9%	760	-4.4%	1,229.2	-4.6%	19.0	2.6%
2009-10	2,404	-4.3%	743	-2.2%	1,171.6	-4.7%	18.9	-0.4%
2010-11	2,215	-7.9%	646	-13.1%	1,041.3	-11.1%	18.2	-3.8%
2011-12	1,960	-11.5%	533	-17.5%	983.1	-5.6%	18.3	0.6%
2012-13	1,786	-8.9%	488	-8.4%	851.0	-13.4%	19.2	4.6%

Multiple declines occurred within the commitment population during FY 2012-13. Commitment ADP dropped to 851.0, a decline of 13%. There were 9% fewer clients served, which marked the seventh consecutive year of decline in unique youth served. The number of new commitments also decreased in FY 2012-13 (-8.4%) with 488 newly committed youth. New commitment figures have not been in the 400 levels since FY 1988-89. Commitment length of service (LOS) for youth that discharged during FY 2012-13 was 19.2 months, an increase of 4.6% from the FY 2011-12 LOS of 18.3.

In their December 2013 forecast estimates, Legislative Council Staff (LCS) projected that DYC's commitment population will continue to decline over the next three fiscal years, reaching 616 ADP by FY 2015-16. Similarly, population projections released in January 2014 by the Division of Criminal Justice (DCJ) also indicate a decline in DYC commitment levels, reaching the 729 ADP by the end of FY 2015-16.

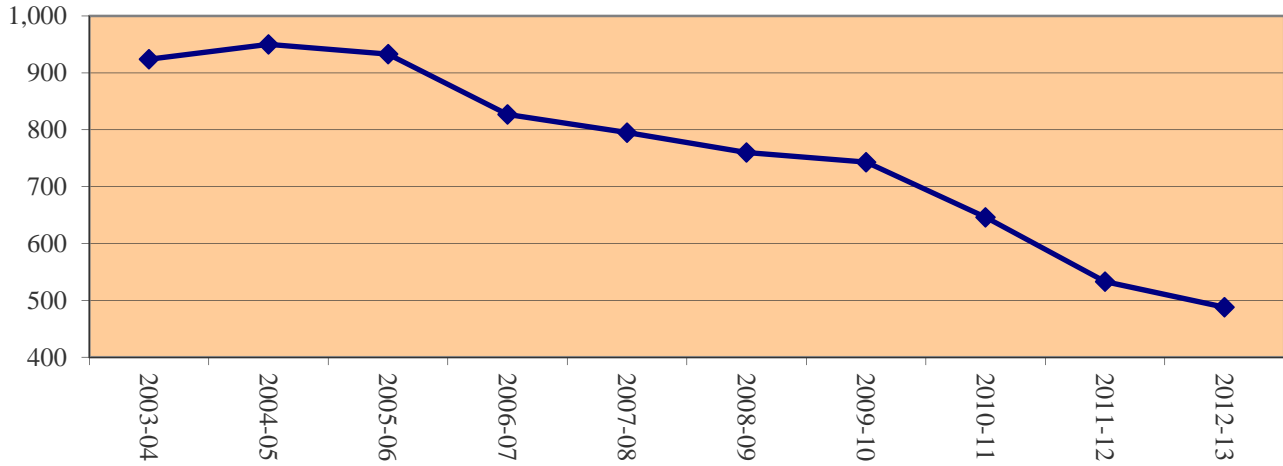
¹Clients Served is an unduplicated count.

²Commitment ADP includes secure, staff-supervised, and community based residential treatment programs.

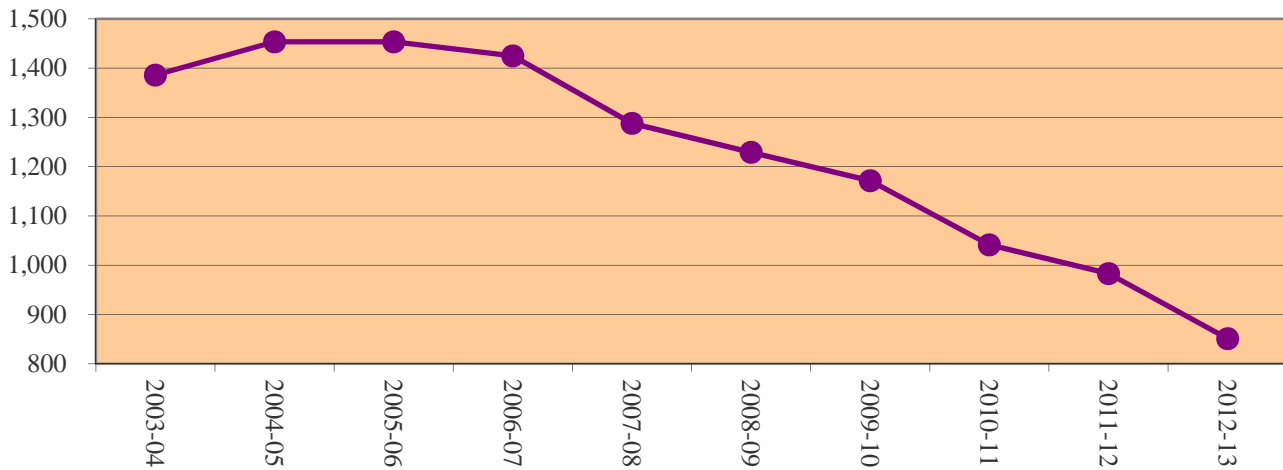
COMMITMENT POPULATION TRENDS

FY 2003-04 Through FY 2012-13

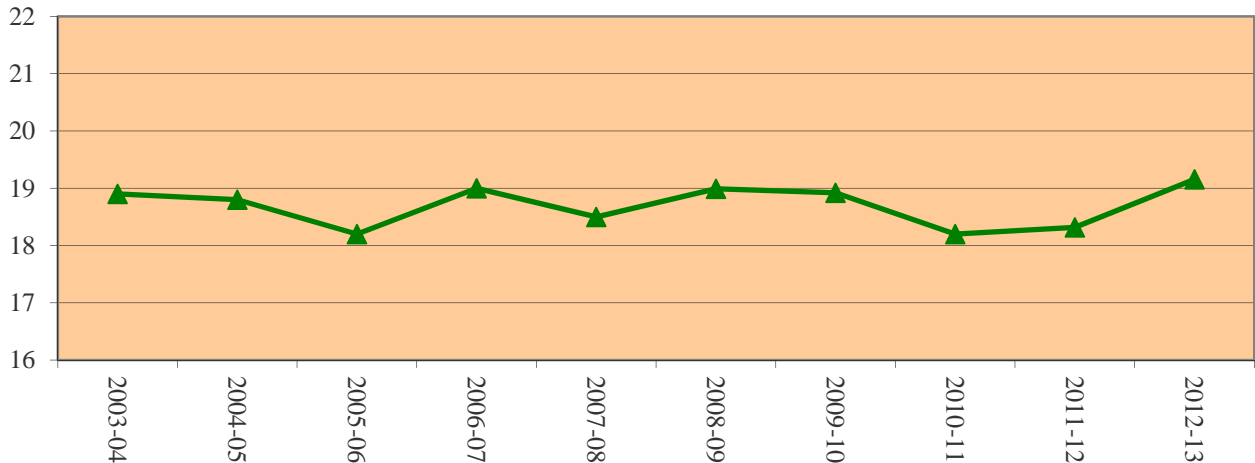
Trends in New Commitments



Trends in Commitment ADP



Trends in Commitment LOS (Months)



PREVIOUS JUVENILE JUSTICE INVOLVEMENT

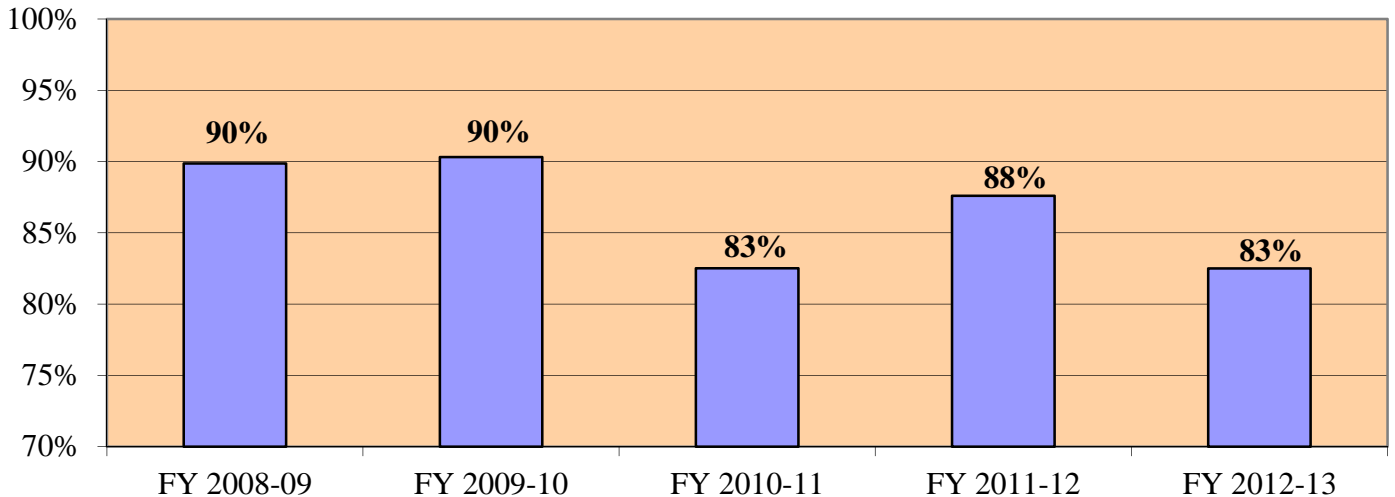
5-Year New Commitment Trends

	FY 2008-09		FY 2009-10		FY 2010-11		FY 2011-12		FY 2012-13	
	#	%	#	%	#	%	#	%	#	%
1 Probation	602	79%	578	78%	464	72%	408	77%	355	73%
2 Diversion/Informal Adjustment & Probation	80	11%	93	13%	69	11%	59	11%	45	9%
3 Deferred or "Reserved" Adjudication*	1	0%	0	0%	0	0%	0	0%	3	1%
4 No Probation	56	7%	54	7%	90	14%	54	10%	59	12%
5 Diversion/Informal Adjustment	13	2%	15	2%	13	2%	9	2%	7	1%
6 Unknown at time of Commitment	2	0%	3	0%	10	2%	1	0%	1	0%
7 Missing	6	1%	0	0%	0	0%	2	0%	18	4%
TOTAL	795	100%	743	100%	646	100%	533	100%	488	100%

*The majority of Deferred youth have open Probation cases as well.

	FY 2008-09		FY 2009-10		FY 2010-11		FY 2011-12		FY 2012-13	
	#	%	#	%	#	%	#	%	#	%
All Probation (categories 1 & 2)	682	90%	671	90%	533	83%	467	88%	400	82%
All Potential* Probation (categories 1, 2 & 3)	683	90%	671	90%	533	83%	467	88%	403	83%

DYC New Commitments With Previous Probation Involvement

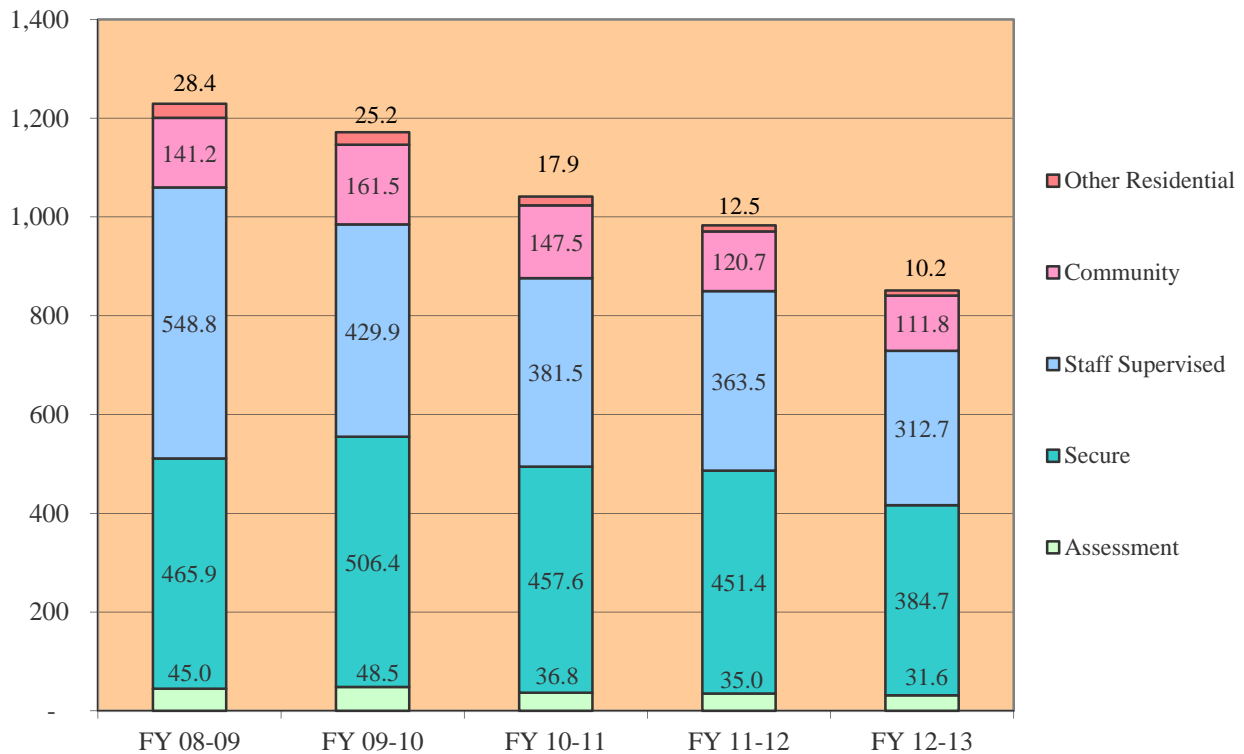


COMMITMENT POPULATION TRENDS

BY PROGRAM TYPE

	FY 2008-09	FY 2009-10	FY 2010-11	FY 2011-12	FY 2012-13
Assessment	45.0	48.5	36.8	35.0	31.6
Secure	465.9	506.4	457.6	451.4	384.7
Staff Supervised	548.8	429.9	381.5	363.5	312.7
Community	141.2	161.5	147.5	120.7	111.8
Other Residential ¹	28.4	25.2	17.9	12.5	10.2
Total Commitment ADP	1,229.2	1,171.6	1,041.3	983.1	851.0

Commitment ADP



¹Other Residential includes Group Homes, Job Corps, Hospitalizations, etc.

COMMITMENT POPULATION

CLIENTS SERVED & ADP BY PROGRAM

Fiscal Year 2012-2013

	Clients Served ¹	ADP
Assessment		
<i>State Operated</i>		
Grand Mesa YSC	65	4.1
Mount View YSC	287	16.1
Platte Valley YSC	139	7.4
Spring Creek YSC	97	4.1
Total Assessment	541	31.6
Secure		
<i>State Operated</i>		
Adams YSC ²	N/A	0.5
Gilliam YSC ²	N/A	0.2
Grand Mesa YSC	102	37.7
Lookout Mountain YSC	260	142.6
Marvin W. Foote YSC	29	0.6
Mount View YSC	419	39.6
Platte Valley YSC	246	40.2
Pueblo YSC ²	N/A	0.8
Spring Creek YSC	130	33.4
Zebulon Pike YSC	71	36.7
<i>Subtotal State Operated</i>	<i>969</i>	<i>332.3</i>
<i>Privately Operated</i>		
Betty K. Marler Center	71	39.9
Robert Denier YSC	47	12.5
<i>Subtotal Privately Operated</i>	<i>116</i>	<i>52.4</i>
Total Secure	1,147	384.7
Staff-Supervised (Contract)		
Alternative Homes for Youth	31	10.6
Childrens Ark at Pueblo	20	6.8
Devereux Cleo Wallace	60	24.0
Gateway Residential-Delta	12	4.3
Hilltop Residential Youth Services	21	3.9
Jefferson Hills Aurora	103	35.8
Mountain Crest/Poudre Valley Health :	18	7.2
Ridgeview YSC	401	193.2
Robert A Brown Center	8	1.8
Southern Peaks	41	14.5
Third Way Center - Lowry	40	10.7
Total Staff-Supervised (Contract)	718	312.7

¹Clients Served is an unduplicated count. Categorical totals are not a sum of individual program counts and are not available for all categories.

²Detention-only facilities periodically and briefly serve committed youth in certain instances.

COMMITMENT POPULATION
CLIENTS SERVED & ADP BY PROGRAM
Fiscal Year 2012-2013

	Clients Served ¹	ADP
Community (Contract)		
Ariel Clinical Services	7	1.7
Community Corrections and Work Release	4	0.8
Dale House Project	29	8.2
Denver Area Youth Services	3	0.8
Gateway Residential Program - Grand Junction	8	1.8
Griffith Centers for Children Inc.	19	7.5
Griffith Centers for Children Inc. Chins Up	2	0.3
Job Corps	10	3.2
Kids Crossing	6	1.4
Larimer Community Corrections	1	0.1
Lost and Found - Arvada	9	0.6
Mesa County Community Corrections	8	1.9
Mt. Evans Qualifying House	25	7.5
Reflections for Youth (RFY) Grismore	2	0.4
Reflections for Youth (RFY) Prairie View	1	0.4
Savio House	10	1.6
Summit Treatment Service	36	10.3
Synergy	24	7.4
Third Way Center	20	6.0
Third Way Center - Pontiac	23	5.7
Third Way Center - York	41	10.0
Third Way Center - Lincoln	39	9.9
Turning Point Center - Prospect	12	3.4
Turning Point - Mathews St.	27	5.8
Whimspire Child Placement Agency	8	1.7
Youthtrack San Louis Valley	11	4.6
Youthtrack Work and Learn	31	8.8
Total Community (Contract)	369	111.8
<hr/>		
Total Other Residential	55	10.2

STATEWIDE COMMITMENT	1,786	851.0
-----------------------------	--------------	--------------

¹Clients Served is an unduplicated count. Categorical totals are not a sum of individual program counts.

²Mental Health, ³ Drug/Alcohol

COMMITMENT POPULATION

NEW COMMITMENT & ADP DEMOGRAPHIC TRENDS

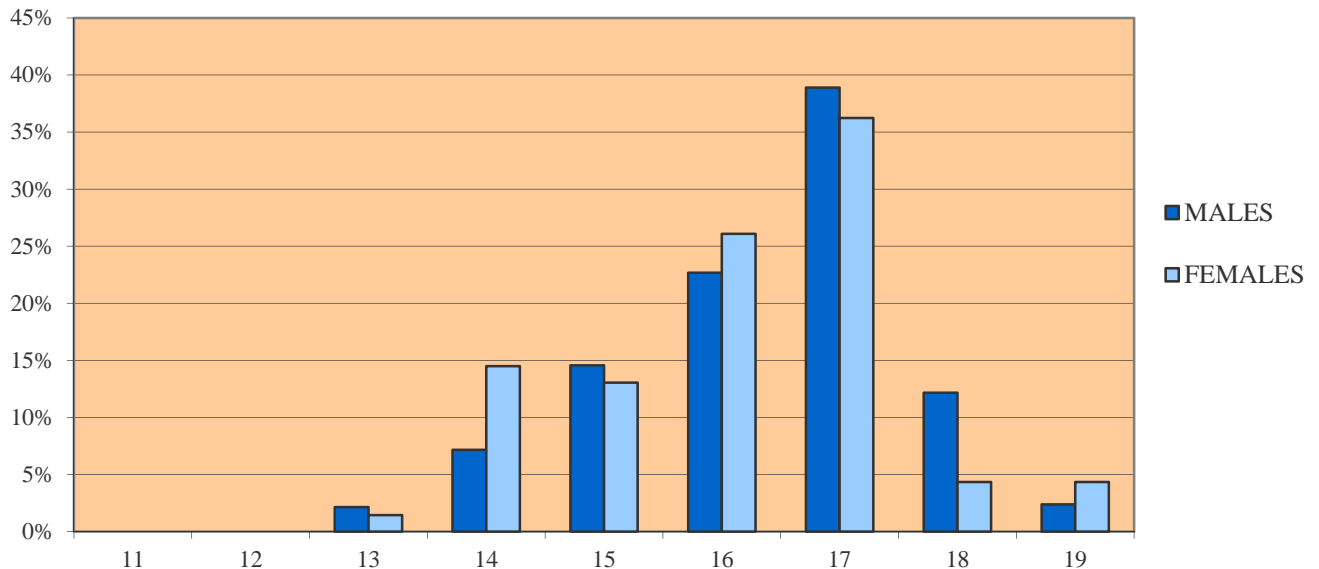
	FY 2010-11				FY 2011-12				FY 2012-13			
	New Coms	%	ADP	%	New Coms	%	ADP	%	New Coms	%	ADP	%
GENDER												
Male	550	85.1%	898.0	86.3%	460	86.3%	847.0	86.2%	419	85.9%	732.9	86.1%
Female	96	14.9%	143.2	13.8%	73	13.7%	136.1	13.8%	69	14.1%	118.1	13.9%
TOTAL	646	100.0%	1,041.2	100.0%	533	100.0%	983.0	100.0%	488	100.0%	851.0	100.0%
ETHNICITY												
Anglo-Amer.	268	41.5%	439.6	42.2%	231	43.3%	411.1	41.8%	210	43.0%	366.2	43.0%
African-Amer.	112	17.3%	207.7	19.9%	78	14.6%	185.2	18.8%	91	18.6%	152.1	17.9%
Hispanic/Latino	236	36.5%	356.2	34.2%	209	39.2%	347.8	35.4%	170	34.8%	302.9	35.6%
Native American	13	2.0%	22.9	2.2%	4	0.8%	16.0	1.6%	5	1.0%	13.0	1.5%
Asian-American	10	1.5%	9.2	0.9%	4	0.8%	11.8	1.2%	9	1.8%	10.3	1.2%
Other	7	1.1%	5.6	0.5%	7	1.3%	11.2	1.1%	3	0.6%	6.6	0.8%
AGE¹												
11 Years	0	0.0%	0.1	0.0%	0	0.0%	0.0	0.0%	0	0.0%	0.0	0.0%
12 Years	2	0.3%	5.1	0.5%	1	0.2%	5.7	0.6%	0	0.0%	5.0	0.6%
13 Years	9	1.4%	20.0	1.9%	10	1.9%	22.5	2.3%	10	2.0%	23.1	2.7%
14 Years	47	7.3%	93.1	8.9%	33	6.2%	90.6	9.2%	40	8.2%	82.0	9.6%
15 Years	93	14.4%	209.1	20.1%	82	15.4%	176.5	18.0%	70	14.3%	146.4	17.2%
16 Years	175	27.1%	292.0	28.0%	152	28.5%	275.4	28.0%	113	23.2%	236.1	27.7%
17 Years	237	36.7%	312.9	30.1%	178	33.4%	294.5	30.0%	188	38.5%	265.4	31.2%
18 Years	71	11.0%	92.3	8.9%	68	12.8%	102.9	10.5%	54	11.1%	83.9	9.9%
19 Years +	12	1.9%	16.6	1.6%	9	1.7%	15.0	1.5%	13	2.7%	9.2	1.1%
Average Age												
at Commitment:	16.8 Years				16.8 Years				16.8 Years			
Rate of New Commitments per 10,000 Juvenile Population	11.9				9.7				8.8			

¹New Commitment counts for each age category correspond to age at commitment. ADP figures for each age category, however, are based on the youth's age on the last day of the fiscal year.

NEW COMMITMENT
DEMOGRAPHIC TRENDS BY GENDER

	MALES						FEMALES					
	FY 2010-11		FY 2011-12		FY 2012-13		FY 2010-11		FY 2011-12		FY 2012-13	
	N	%	N	%	N	%	N	%	N	%	N	%
DEMOGRAPHIC DATA¹												
Ethnicity												
Anglo-American	221	40.2%	184	40.0%	169	40.3%	47	49.0%	47	64.4%	41	59.4%
African-American	93	16.9%	74	16.1%	78	18.6%	19	19.8%	4	5.5%	13	18.8%
Hispanic/Latino	212	38.5%	189	41.1%	156	37.2%	24	25.0%	20	27.4%	14	20.3%
Native American	11	2.0%	3	0.7%	4	1.0%	2	2.1%	1	1.4%	1	1.4%
Asian-American	7	1.3%	4	0.9%	9	2.1%	3	3.1%	0	0.0%	0	0.0%
Other	6	1.1%	6	1.3%	3	0.7%	1	1.0%	1	1.4%	0	0.0%
TOTAL NEW COMMITMENTS	550	100%	460	100%	419	100%	96	100.0%	73	100.0%	69	100.0%
Age												
11 Years	0	0.0%	0	0.0%	0	0.0%	0	0.0%	0	0.0%	0	0.0%
12 Years	2	0.4%	1	0.2%	0	0.0%	0	0.0%	0	0.0%	0	0.0%
13 Years	8	1.5%	8	1.7%	9	2.1%	1	1.0%	2	2.7%	1	1.4%
14 Years	43	7.8%	29	6.3%	30	7.2%	4	4.2%	4	5.5%	10	14.5%
15 Years	85	15.5%	63	13.7%	61	14.6%	8	8.3%	19	26.0%	9	13.0%
16 Years	147	26.7%	134	29.1%	95	22.7%	28	29.2%	18	24.7%	18	26.1%
17 Years	194	35.3%	155	33.7%	163	38.9%	43	44.8%	23	31.5%	25	36.2%
18 Years	59	10.7%	61	13.3%	51	12.2%	12	12.5%	7	9.6%	3	4.3%
19 Years	12	2.2%	9	2.0%	10	2.4%	0	0.0%	0	0.0%	3	4.3%
Average Age at Commitment	16.8 Yrs		16.9 Yrs		16.9 Yrs		17.0 Yrs		16.6 Yrs		16.6 Yrs	

FY 2012-13 Age at Commitment



¹Data based on new commitments.

NEW COMMITMENT
DEMOGRAPHIC TRENDS BY GENDER

NEW COMMITMENT PROFILE	MALES						FEMALES					
	FY 2010-11		FY 2011-12		FY 2012-13		FY 2010-11		FY 2011-12		FY 2012-13	
	N	%	N	%	N	%	N	%	N	%	N	%
Prior Adjudications												
None	161	29.3%	100	21.7%	112	26.7%	36	37.5%	28	38.4%	26	37.7%
One	140	25.5%	127	27.6%	113	27.0%	21	21.9%	19	26.0%	23	33.3%
Two or more	249	45.3%	233	50.7%	194	46.3%	39	40.6%	26	35.6%	20	29.0%
TOTAL NEW COMMITMENTS	550	100%	460	100%	419	100%	96	100%	73	100%	69	100%
Prior Out-of-Home Placements												
None	204	37.1%	162	35.2%	149	35.6%	17	17.7%	10	13.7%	10	14.5%
One	138	25.1%	115	25.0%	99	23.6%	29	30.2%	19	26.0%	14	20.3%
Two or more	208	37.8%	183	39.8%	171	40.8%	50	52.1%	44	60.3%	45	65.2%
Runaway History¹												
No runaway history	182	33.1%	147	32.0%	122	29.1%	8	8.3%	7	9.6%	12	17.4%
Runaway history	368	66.9%	313	68.0%	297	70.9%	88	91.7%	66	90.4%	57	82.6%
Assessed Substance Abuse Counseling Needs²												
Prevention	71	12.9%	55	12.0%	35	8.4%	15	15.6%	9	12.3%	5	7.2%
Intervention	104	18.9%	82	17.8%	78	18.6%	11	11.5%	11	15.1%	15	21.7%
Treatment	373	67.8%	322	70.0%	306	73.0%	70	72.9%	53	72.6%	49	71.0%
Data Not Available	2	0.4%	1	0.2%	0	0.0%	0	0.0%	0	0.0%	0	0.0%
Assessed Mental Health Needs³												
Formal Intervention Required	294	55.5%	259	56.9%	219	55.6%	70	77.8%	47	66.2%	50	75.8%
No Formal Intervention Required	236	44.5%	196	43.1%	175	44.4%	20	22.2%	24	33.8%	16	24.2%
Data Not Available	20	N/A	5	N/A	25	N/A	6	N/A	2	N/A	3	N/A
Average Age at First Adjudication:	14.7		14.5		14.1		15.1		14.9		14.4	

¹Refers to running away from a secure or nonsecure placement as well as from home during the 12 months prior to commitment.

²Substance abuse history and treatment needs are assessed within one month of commitment. Youth with minimal substance abuse history and/or treatment needs are identified for prevention services whereas those reporting the greatest history of abuse and treatment needs are targeted for substance abuse treatment services.

³Colorado Client Assessment Record used to assess mental health needs within one month of commitment. Percentages are based on total New Commitment CCARs given and do not include missing data (based on valid percents).

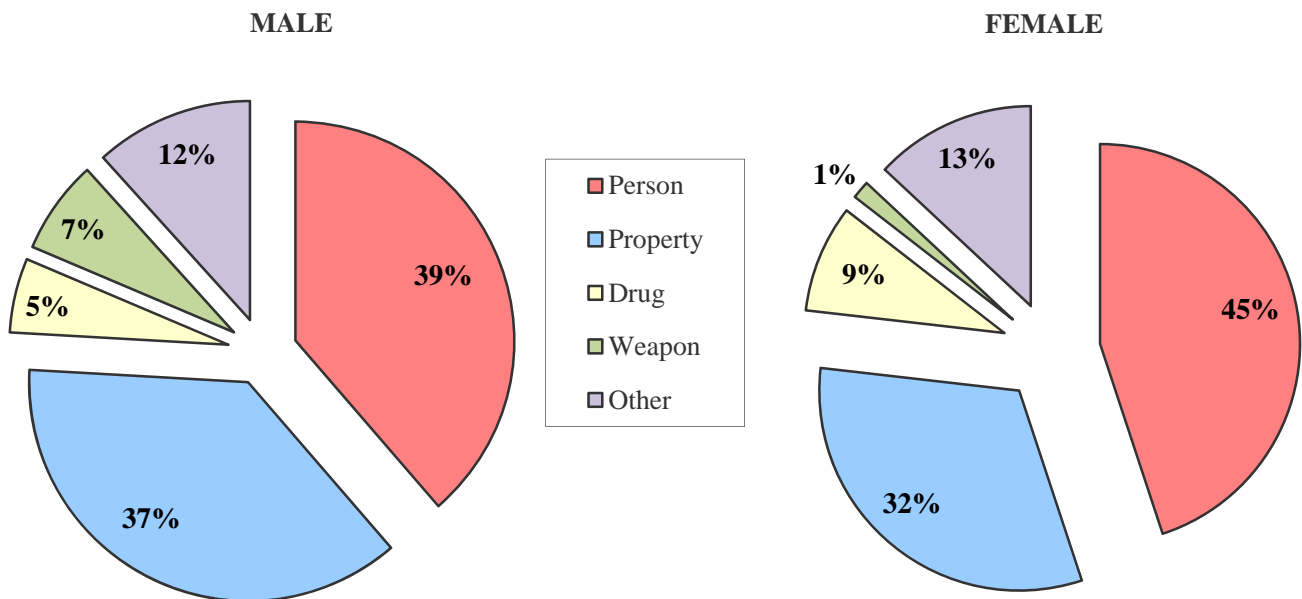
NEW COMMITMENT TRENDS

BY GENDER

NEW COMMITMENT DATA	MALES						FEMALES					
	FY 2010-11		FY 2011-12		FY 2012-13		FY 2010-11		FY 2011-12		FY 2012-13	
	N	%	N	%	N	%	N	%	N	%	N	%
Offense Type												
Person Felony	111	20.2%	82	17.8%	88	21.0%	14	14.6%	8	11.0%	10	14.5%
Person Misdemeanor	105	19.1%	65	14.1%	74	17.7%	27	28.1%	14	19.2%	21	30.4%
Property Felony	184	33.5%	147	32.0%	116	27.7%	19	19.8%	14	19.2%	12	17.4%
Property Misdemeanor	55	10.0%	46	10.0%	40	9.5%	20	20.8%	10	13.7%	10	14.5%
Drug Felony	26	4.7%	27	5.9%	17	4.1%	7	7.3%	2	2.7%	5	7.2%
Drug Misdemeanor	2	0.4%	1	0.2%	6	1.4%	0	0.0%	1	1.4%	1	1.4%
Weapons Felony	8	1.5%	9	2.0%	10	2.4%	0	0.0%	0	0.0%	0	0.0%
Weapons Misdemeanor	3	0.5%	17	3.7%	19	4.5%	0	0.0%	0	0.0%	1	1.4%
Other ¹	33	6.0%	31	6.7%	49	11.7%	7	7.3%	16	21.9%	9	13.0%
Data Not Available	23	4.2%	35	7.6%	0	0.0%	2	2.1%	8	11.0%	0	0.0%
TOTAL NEW COMMITMENTS	550	100.0%	460	100.0%	419	100.0%	96	100.0%	73	100.0%	69	100.0%

Sentence Type												
Non-Mandatory	373	67.8%	307	66.7%	283	67.5%	73	76.0%	48	65.8%	53	76.8%
Mandatory	101	18.4%	90	19.6%	82	19.6%	17	17.7%	15	20.5%	11	15.9%
Repeat	57	10.4%	52	11.3%	45	10.7%	5	5.2%	8	11.0%	5	7.2%
Violent	3	0.5%	2	0.4%	4	1.0%	1	1.0%	0	0.0%	0	0.0%
Aggravated Juvenile	15	2.7%	8	1.7%	5	1.2%	0	0.0%	2	2.7%	0	0.0%
Data Not Available	1	0.2%	1	0.2%	0	0.0%	0	0.0%	0	0.0%	0	0.0%

FY 2012-13 Offense Type²



¹Includes other types of felony, misdemeanor and petty offenses

²Felony and Misdemeanor counts are combined

NEW COMMITMENT

DEMOGRAPHIC TRENDS BY ETHNICITY

Age at Commitment

			10	11	12	13	14	15	16	17	18	19+	TOTAL NEW COMMITMENTS	Average Age at Commitment	
Ethnicity															
Anglo-American	FY 12-13	N	0	0	0	3	12	25	48	86	29	7	210	17.1	
		%	0.0%	0.0%	0.0%	1.4%	5.7%	11.9%	22.9%	41.0%	13.8%	3.3%	100.0%		
	FY 11-12	N	0	0	1	4	10	35	65	74	36	6	231	16.9	
		%	0.0%	0.0%	0.4%	1.7%	4.3%	15.2%	28.1%	32.0%	15.6%	2.6%	100.0%		
	FY 10-11	N	0	0	1	3	17	34	65	99	40	9	268	17.0	
		%	0.0%	0.0%	0.4%	1.1%	6.3%	12.7%	24.3%	36.9%	14.9%	3.4%	100.0%		
African-American	FY 12-13	N	0	0	0	2	12	13	24	35	5	0	91	16.5	
		%	0.0%	0.0%	0.0%	2.2%	13.2%	14.3%	26.4%	38.5%	5.5%	0.0%	100.0%		
	FY 11-12	N	0	0	0	2	5	12	22	25	11	1	78	16.8	
		%	0.0%	0.0%	0.0%	2.6%	6.4%	15.4%	28.2%	32.1%	14.1%	1.3%	100.0%		
	FY 10-11	N	0	0	0	1	4	17	37	41	10	2	112	16.8	
		%	0.0%	0.0%	0.0%	0.9%	3.6%	15.2%	33.0%	36.6%	8.9%	1.8%	100.0%		
Hispanic/Latino	FY 12-13	N	0	0	0	5	15	31	37	59	17	6	170	16.7	
		%	0.0%	0.0%	0.0%	2.9%	8.8%	18.2%	21.8%	34.7%	10.0%	3.5%	100.0%		
	FY 11-12	N	0	0	0	4	18	35	61	71	18	2	209	16.7	
		%	0.0%	0.0%	0.0%	1.9%	8.6%	16.7%	29.2%	34.0%	8.6%	1.0%	100.0%		
	FY 10-11	N	0	0	1	4	21	37	67	87	18	1	236	16.7	
		%	0.0%	0.0%	0.4%	1.7%	8.9%	15.7%	28.4%	36.9%	7.6%	0.4%	100.0%		
Native American	FY 12-13	N	0	0	0	0	1	0	2	1	1	0	5	16.7	
		%	0.0%	0.0%	0.0%	0.0%	20.0%	0.0%	40.0%	20.0%	20.0%	0.0%	100.0%		
	FY 11-12	N	0	0	0	0	0	0	0	1	2	1	0	4	17.6
		%	0.0%	0.0%	0.0%	0.0%	0.0%	0.0%	25.0%	50.0%	25.0%	0.0%	100.0%		
	FY 10-11	N	0	0	0	0	3	4	3	3	2	1	0	13	16.0
		%	0.0%	0.0%	0.0%	0.0%	23.1%	30.8%	23.1%	15.4%	7.7%	0.0%	100.0%		
Asian-American	FY 12-13	N	0	0	0	0	0	1	2	4	2	0	9	17.4	
		%	0.0%	0.0%	0.0%	0.0%	0.0%	11.1%	22.2%	44.4%	22.2%	0.0%	100.0%		
	FY 11-12	N	0	0	0	0	0	0	0	1	2	1	0	4	17.4
		%	0.0%	0.0%	0.0%	0.0%	0.0%	0.0%	25.0%	50.0%	25.0%	0.0%	100.0%		
	FY 10-11	N	0	0	0	0	2	1	1	1	5	1	0	10	16.8
		%	0.0%	0.0%	0.0%	0.0%	20.0%	10.0%	10.0%	50.0%	10.0%	0.0%	100.0%		
Other	FY 12-13	N	0	0	0	0	0	0	0	3	0	0	3	17.5	
		%	0.0%	0.0%	0.0%	0.0%	0.0%	0.0%	0.0%	100.0%	0.0%	0.0%	100.0%		
	FY 11-12	N	0	0	0	0	0	0	0	2	4	1	0	7	17.4
		%	0.0%	0.0%	0.0%	0.0%	0.0%	0.0%	28.6%	57.1%	14.3%	0.0%	100.0%		
	FY 10-11	N	0	0	0	0	1	0	2	2	3	1	0	7	16.7
		%	0.0%	0.0%	0.0%	0.0%	14.3%	0.0%	28.6%	42.9%	14.3%	0.0%	100.0%		

NEW COMMITMENT

DEMOGRAPHIC TRENDS BY ETHNICITY

		Prior Adjudications			Prior Out-of-Home Placements			Runaway History		TOTAL NEW COMMITMENTS	Average Age at First Adjudication	
		None	One	Two or more	None	One	Two or more	No Runaway History	Runaway History			
Ethnicity												
Anglo-American	FY 12-13	N	59	55	96	53	55	102	61	149	210	14.5
		%	28.1%	26.2%	45.7%	25.2%	26.2%	48.6%	29.0%	71.0%		
	FY 11-12	N	62	63	106	53	61	117	65	166	231	14.7
		%	26.8%	27.3%	45.9%	22.9%	26.4%	50.6%	28.1%	71.9%		
	FY 10-11	N	89	65	114	79	66	123	73	195	268	14.9
		%	33.2%	24.3%	42.5%	29.5%	24.6%	45.9%	27.2%	72.8%		
African-American	FY 12-13	N	21	35	35	35	16	40	24	67	91	13.9
		%	23.1%	38.5%	38.5%	38.5%	17.6%	44.0%	26.4%	73.6%		
	FY 11-12	N	16	27	35	19	20	39	17	61	78	14.7
		%	20.5%	34.6%	44.9%	24.4%	25.6%	50.0%	21.8%	78.2%		
	FY 10-11	N	37	24	51	32	28	52	35	77	112	14.8
		%	33.0%	21.4%	45.5%	28.6%	25.0%	46.4%	31.3%	68.8%		
Hispanic/Latino	FY 12-13	N	50	44	76	66	38	66	44	126	170	13.7
		%	29.4%	25.9%	44.7%	38.8%	22.4%	38.8%	25.9%	74.1%		
	FY 11-12	N	47	51	111	94	51	64	67	142	209	14.4
		%	22.5%	24.4%	53.1%	45.0%	24.4%	30.6%	32.1%	67.9%		
	FY 10-11	N	64	64	108	101	60	75	72	164	236	14.6
		%	27.1%	27.1%	45.8%	42.8%	25.4%	31.8%	30.5%	69.5%		
Native American	FY 12-13	N	1	0	4	2	2	1	3	2	5	14.4
		%	20.0%	0.0%	80.0%	40.0%	40.0%	20.0%	60.0%	40.0%		
	FY 11-12	N	2	0	2	2	0	2	2	2	4	16.0
		%	50.0%	0.0%	50.0%	50.0%	0.0%	50.0%	50.0%	50.0%		
	FY 10-11	N	3	4	6	4	7	2	5	8	13	14.5
		%	23.1%	30.8%	46.2%	30.8%	53.8%	15.4%	38.5%	61.5%		
Asian-American	FY 12-13	N	5	2	2	2	2	5	1	8	9	15.6
		%	55.6%	22.2%	22.2%	22.2%	22.2%	55.6%	11.1%	88.9%		
	FY 11-12	N	0	2	2	1	0	3	1	3	4	11.5
		%	0.0%	50.0%	50.0%	25.0%	0.0%	75.0%	25.0%	75.0%		
	FY 10-11	N	0	4	6	3	4	3	2	8	10	14.3
		%	0.0%	40.0%	60.0%	30.0%	40.0%	30.0%	20.0%	80.0%		
Other	FY 12-13	N	2	0	1	1	0	2	1	2	3	15.3
		%	66.7%	0.0%	33.3%	33.3%	0.0%	66.7%	33.3%	66.7%		
	FY 11-12	N	1	3	3	3	2	2	2	5	7	15.4
		%	14.3%	42.9%	42.9%	42.9%	28.6%	28.6%	28.6%	71.4%		
	FY 10-11	N	4	0	3	2	2	3	3	4	7	15.4
		%	57.1%	0.0%	42.9%	28.6%	28.6%	42.9%	42.9%	57.1%		

NEW COMMITMENT

DEMOGRAPHIC TRENDS BY ETHNICITY

		Assessed Substance Abuse Counseling Needs				Assessed Mental Health Intervention Needs*		TOTAL NEW COMS
		Prevention	Intervention	Treatment	No Formal Intervention Required	Formal Intervention Required		
Ethnicity								
Anglo-American	FY 12-13	N	19	42	149	87	114	210
		%	9.0%	20.0%	71.0%	43.3%	56.7%	
	FY 11-12	N	40	30	161	87	141	231
		%	17.3%	13.0%	69.7%	38.2%	61.8%	
	FY 10-11	N	45	41	182	94	161	268
		%	16.8%	15.3%	67.9%	36.9%	63.1%	
African-American	FY 12-13	N	8	21	62	31	54	91
		%	8.8%	23.1%	68.1%	36.5%	63.5%	
	FY 11-12	N	10	23	45	30	47	78
		%	12.8%	29.5%	57.7%	39.0%	61.0%	
	FY 10-11	N	15	27	70	47	62	112
		%	13.4%	24.1%	62.5%	43.1%	56.9%	
Hispanic/Latino	FY 12-13	N	11	29	130	64	93	170
		%	6.5%	17.1%	76.5%	40.8%	59.2%	
	FY 11-12	N	12	41	156	96	111	209
		%	5.7%	19.6%	74.6%	46.4%	53.6%	
	FY 10-11	N	24	44	168	108	124	236
		%	10.2%	18.6%	71.2%	46.6%	53.4%	
Native American	FY 12-13	N	1	1	3	3	2	5
		%	20.0%	20.0%	60.0%	60.0%	40.0%	
	FY 11-12	N	0	0	4	2	2	4
		%	0.0%	0.0%	100.0%	50.0%	50.0%	
	FY 10-11	N	1	1	11	4	8	13
		%	7.7%	7.7%	84.6%	33.3%	66.7%	
Asian-American	FY 12-13	N	1	0	8	4	5	9
		%	11.1%	0.0%	88.9%	44.4%	55.6%	
	FY 11-12	N	1	0	3	2	2	4
		%	25.0%	0.0%	75.0%	50.0%	50.0%	
	FY 10-11	N	1	3	6	2	7	10
		%	10.0%	30.0%	60.0%	22.2%	77.8%	
Other	FY 12-13	N	0	0	3	2	1	3
		%	0.0%	0.0%	100.0%	66.7%	33.3%	
	FY 11-12	N	1	0	6	3	3	7
		%	14.3%	0.0%	85.7%	50.0%	50.0%	
	FY 10-11	N	0	0	7	5	2	7
		%	0.0%	0.0%	100.0%	71.4%	28.6%	

NEW COMMITMENT

TRENDS BY ETHNICITY

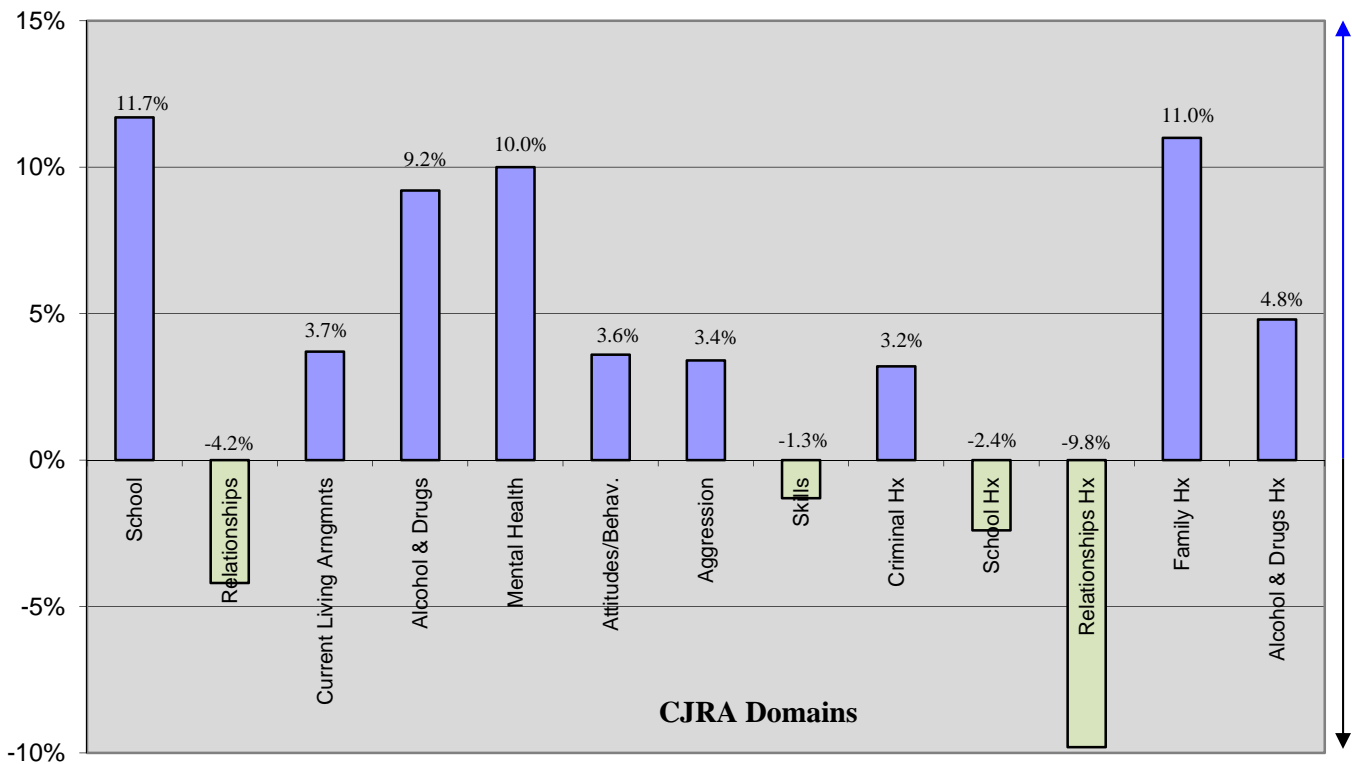
		Offense Type							Sentence Type						TOTAL NEW COMMITMENTS
		Person	Property	Drug	Weapon	Other	Data Not Available	Non-Mandatory	Mandatory	Repeat	Violent	Aggravated	Data Not Available		
Ethnicity															
Anglo-American	FY 12-13	N	73	83	17	16	21	0	142	41	25	1	1	0	210
		%	34.8%	39.5%	8.1%	7.6%	10.0%	0.0%	67.6%	19.5%	11.9%	0.5%	0.5%	0.0%	
	FY 11-12	N	75	88	16	8	24	20	157	44	22	0	7	1	231
		%	32.5%	38.1%	6.9%	3.5%	10.4%	8.7%	68.0%	19.0%	9.5%	0.0%	3.0%	0.4%	
	FY 10-11	N	125	102	14	4	23	0	194	44	24	1	5	0	268
		%	46.6%	38.1%	5.2%	1.5%	8.6%	0.0%	72.4%	16.4%	9.0%	0.4%	1.9%	0.0%	
African-American	FY 12-13	N	44	27	3	5	12	0	62	23	4	1	1	0	91
		%	48.4%	29.7%	3.3%	5.5%	13.2%	0.0%	68.1%	25.3%	4.4%	1.1%	1.1%	0.0%	
	FY 11-12	N	28	35	2	8	3	2	61	14	3	0	0	0	78
		%	35.9%	44.9%	2.6%	10.3%	3.8%	2.6%	78.2%	17.9%	3.8%	0.0%	0.0%	0.0%	
	FY 10-11	N	54	46	6	2	4	0	79	18	10	1	4	0	112
		%	48.2%	41.1%	5.4%	1.8%	3.6%	0.0%	70.5%	16.1%	8.9%	0.9%	3.6%	0.0%	
Hispanic/Latino	FY 12-13	N	73	58	9	8	22	0	118	27	20	2	3	0	170
		%	42.9%	34.1%	5.3%	4.7%	12.9%	0.0%	69.4%	15.9%	11.8%	1.2%	1.8%	0.0%	
	FY 11-12	N	63	88	10	9	19	20	128	43	33	2	3	0	209
		%	30.1%	42.1%	4.8%	4.3%	9.1%	9.6%	61.2%	20.6%	15.8%	1.0%	1.4%	0.0%	
	FY 10-11	N	90	113	13	5	15	0	154	49	25	2	5	1	236
		%	38.1%	47.9%	5.5%	2.1%	6.4%	0.0%	65.3%	20.8%	10.6%	0.8%	2.1%	0.4%	
Native American	FY 12-13	N	0	4	0	0	1	0	4	1	0	0	0	0	5
		%	0.0%	80.0%	0.0%	0.0%	20.0%	0.0%	80.0%	20.0%	0.0%	0.0%	0.0%	0.0%	
	FY 11-12	N	1	2	0	0	1	0	2	1	1	0	0	0	4
		%	25.0%	50.0%	0.0%	0.0%	25.0%	0.0%	50.0%	25.0%	25.0%	0.0%	0.0%	0.0%	
	FY 10-11	N	6	7	0	0	0	0	7	3	3	0	0	0	13
		%	46.2%	53.8%	0.0%	0.0%	0.0%	0.0%	53.8%	23.1%	23.1%	0.0%	0.0%	0.0%	
Asian-American	FY 12-13	N	2	4	0	1	2	0	7	1	1	0	0	0	9
		%	22.2%	44.4%	0.0%	11.1%	22.2%	0.0%	77.8%	11.1%	11.1%	0.0%	0.0%	0.0%	
	FY 11-12	N	1	0	1	1	0	1	3	1	0	0	0	0	4
		%	25.0%	0.0%	25.0%	25.0%	0.0%	25.0%	75.0%	25.0%	0.0%	0.0%	0.0%	0.0%	
	FY 10-11	N	3	5	2	0	0	0	7	3	0	0	0	0	10
		%	30.0%	50.0%	20.0%	0.0%	0.0%	0.0%	70.0%	30.0%	0.0%	0.0%	0.0%	0.0%	
Other	FY 12-13	N	1	2	0	0	0	0	3	0	0	0	0	0	3
		%	33.3%	66.7%	0.0%	0.0%	0.0%	0.0%	100.0%	0.0%	0.0%	0.0%	0.0%	0.0%	
	FY 11-12	N	1	4	2	0	0	0	4	2	1	0	0	0	7
		%	14.3%	57.1%	28.6%	0.0%	0.0%	0.0%	57.1%	28.6%	14.3%	0.0%	0.0%	0.0%	
	FY 10-11	N	2	5	0	0	0	0	5	1	0	0	1	0	7
		%	28.6%	71.4%	0.0%	0.0%	0.0%	0.0%	71.4%	14.3%	0.0%	0.0%	14.3%	0.0%	

**NEW COMMITMENT TRENDS
BY YOUTH ACUITY (CJRA RISK)**

Initial CJRA Youth Risk Acuity Trends

CJRA Domain Area		FY 08-09	FY 09-10	FY 10-11	FY 11-12	FY 12-13	% Change over 5 FY
		% High Risk	% High Risk	% High Risk	% High Risk	% High Risk	
DYNAMIC RISK FACTORS							
3b	School (current)	62.5%	63.3%	64.5%	68.2%	74.2%	11.7%
4b	Use of Free Time (current)	N/A	N/A	N/A	N/A	N/A	N/A
5b	Employment (current)	N/A	N/A	N/A	N/A	N/A	N/A
6b	Relationships (current)	83.7%	83.4%	83.1%	80.4%	79.5%	-4.2%
7b	Current Living Arrangements	73.8%	70.4%	71.6%	74.3%	77.5%	3.7%
8b	Alcohol & Drugs (current)	60.6%	58.8%	66.0%	68.7%	69.8%	9.2%
9b	Mental Health (current)	16.4%	19.2%	19.9%	20.6%	26.4%	10.0%
10	Attitudes/Behaviors	93.0%	95.6%	95.9%	97.1%	96.6%	3.6%
11	Aggression	80.7%	75.5%	77.8%	81.6%	84.1%	3.4%
12	Skills	80.5%	84.0%	83.5%	85.2%	79.2%	-1.3%
STATIC RISK FACTORS							
1	Criminal History	77.3%	80.5%	78.2%	81.6%	80.5%	3.2%
2	Demographics	N/A	N/A	N/A	N/A	N/A	N/A
3a	School (history)	29.7%	34.2%	26.6%	28.2%	27.3%	-2.4%
4a	Use of Free Time (historic)	N/A	N/A	N/A	N/A	N/A	N/A
5a	Employment (history)	N/A	N/A	N/A	N/A	N/A	N/A
6a	Relationships (history of)	55.7%	58.9%	54.5%	51.1%	45.9%	-9.8%
7a	Family (history)	72.9%	73.4%	75.9%	76.7%	83.9%	11.0%
8a	Alcohol & Drugs (history)	74.7%	71.2%	73.5%	78.4%	79.5%	4.8%
9a	Mental Health (history)	N/A	N/A	N/A	N/A	N/A	N/A

% Change in Youth Acuity



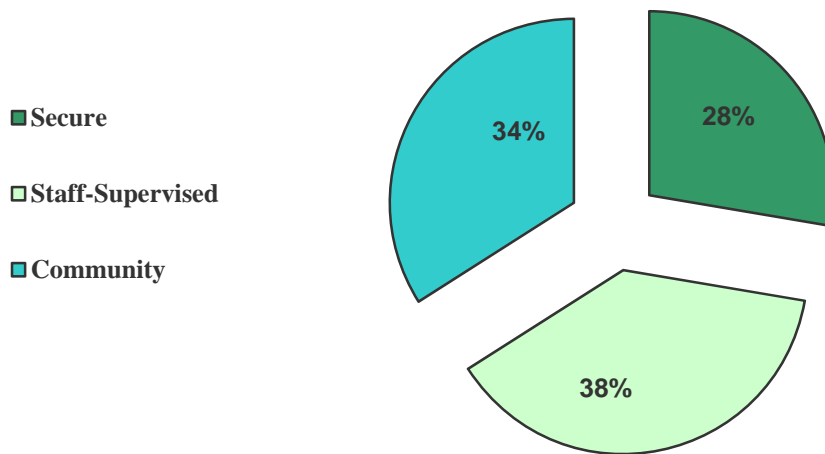
NEW COMMITMENT TRENDS

COMMITMENT CLASSIFICATION & MODIFICATION

	FY 2010-11		FY 2011-12		FY 2012-13	
	N	%	N	%	N	%
INITIAL COMMITMENT CLASSIFICATION¹						
Secure	164	25.4%	144	27.0%	135	27.7%
Staff-Supervised	242	37.5%	195	36.6%	187	38.3%
Community	240	37.2%	194	36.4%	166	34.0%
Total	646	100%	533	100%	488	100%

SECURITY LEVEL MODIFICATION²						
Modified Increase in Security Level	165	25.5%	142	26.6%	119	24.4%
Modified Decrease in Security Level	10	1.5%	31	5.8%	28	5.7%
No Security Level Modification	471	72.9%	360	67.5%	341	69.9%
Total	646	100%	533	100%	488	100%

FY 2012-13 Initial Commitment Classification¹



Offense Severity Score

Serious Person: 8+	16	17	18	19	20	<div style="display: flex; flex-direction: column; align-items: center;"> <div style="width: 20px; height: 20px; background-color: #2e8b57; margin-bottom: 5px;"></div> Secure <div style="width: 20px; height: 20px; background-color: #90ee90; margin-bottom: 5px; margin-left: 20px;"></div> Staff Supervised <div style="width: 20px; height: 20px; background-color: #40e0d0; margin-bottom: 5px; margin-left: 20px;"></div> Community </div>
Major Property, Lesser Person: 3 - 7	11	12	13	14	15	
Minor Property: 1 - 2	6	7	8	9	10	
Other Less Serious: 0	1	2	3	4	5	
	1-3	4-7	8-10	11-12	13-14	

Recidivism Risk Score

¹These initial security levels are subject to modification.

²Security Level Modification considers those factors pertaining to the current commitment charges and individualized service needs that support a recommendation to override the program security level resulting from the juvenile's classification score.

COMMITMENT POPULATION
ADP TRENDS & SPECIAL POPULATIONS

	FY 2008-09		FY 2009-10		FY 2010-11		FY 2011-12		FY 2012-13	
	ADP	%	ADP	%	ADP	%	ADP	%	ADP	%
Prior Adjudications										
None	321.7	26.2%	312.2	26.7%	288.8	27.7%	275.3	28.0%	223.1	26.2%
One	400.2	32.6%	346.0	29.5%	297.6	28.6%	264.3	26.9%	229.0	26.9%
Two or more	507.4	41.3%	513.5	43.8%	454.9	43.7%	443.4	45.1%	398.9	46.9%
TOTAL ADP	1229.2	100.0%	1171.6	100.0%	1041.3	100.0%	983.1	100.0%	851.0	100.0%
Prior Out-of-Home Placements										
None	360.8	29.4%	348.6	29.8%	319.0	30.6%	296.0	30.1%	242.5	28.5%
One	314.9	25.6%	298.9	25.5%	262.2	25.2%	242.6	24.7%	215.3	25.3%
Two or more	553.5	45.0%	524.2	44.7%	460.1	44.2%	444.4	45.2%	393.3	46.2%
	1229.2	100.0%	1171.7	100.0%	1041.3	100.0%	983.1	100.0%	851.0	100.0%
Runaway History¹										
No runaway history	381.4	31.0%	356.5	30.4%	309.5	29.7%	280.5	28.5%	224.8	26.4%
Runaway history	834.9	67.9%	815.1	69.6%	731.8	70.3%	702.6	71.5%	626.3	73.6%
Data Not Available	12.9	1.1%	0.0	0.0%	0.0	0.0%	0.0	0.0%	0.0	0.0%
	1229.2	100.0%	1171.7	100.0%	1041.3	100.0%	983.1	100.0%	851.0	100.0%
DYC SPECIAL POPULATION TRENDS										
Assessed Substance Abuse Counseling Needs²										
Prevention	169.9	13.8%	169.5	14.5%	157.2	15.1%	150.4	15.3%	108.7	12.8%
Intervention	329.2	26.8%	258.6	22.1%	204.1	19.6%	186.7	19.0%	164.3	19.3%
Treatment	728.6	59.3%	743.6	63.5%	679.4	65.2%	644.0	65.5%	578.0	67.9%
Data Not Available	1.6	0.1%	0.0	0.0%	0.6	0.1%	1.9	0.2%	0.0	0.0%
	1229.2	100.0%	1171.7	100.0%	1041.3	100.0%	983.1	100.0%	851.0	100.0%
Assessed Mental Health Needs³										
Formal MH Intervention Required	619.8	50.4%	640.0	54.6%	622.2	59.8%	586.2	59.6%	493.2	58.0%
No Formal MH Intervention Required	591.2	48.1%	523.7	44.7%	409.8	39.4%	387.4	39.4%	348.8	41.0%
Data Not Available	18.2	1.5%	8.0	0.7%	9.3	0.9%	9.4	1.0%	9.0	1.1%
	1229.2	98.5%	1171.7	99.3%	1041.3	99.1%	983.1	99.0%	851.0	98.9%
Youth Requiring Sexual Offense Specific Treatment⁴										
Youth Requiring S.O. Specific Tx	179.7	14.6%	150.9	12.9%	127.3	12.2%	130.5	13.3%	110.0	12.9%
Youth Not Requiring S.O. Specific Tx	1049.5	85.4%	1020.8	87.1%	913.93	87.8%	852.6	86.7%	741.1	87.1%
	1229.2	100.0%	1171.7	100.0%	1041.3	100.0%	983.1	100.0%	851.0	100.0%

¹Refers to running away from a secure or nonsecure placement as well as from home during the 12 months prior to commitment.

²Substance abuse history and treatment needs are assessed within one month of commitment. Youth with minimal substance abuse history and/or treatment needs are identified for prevention services whereas those reporting the greatest history of abuse and treatment needs are targeted for substance abuse treatment services.

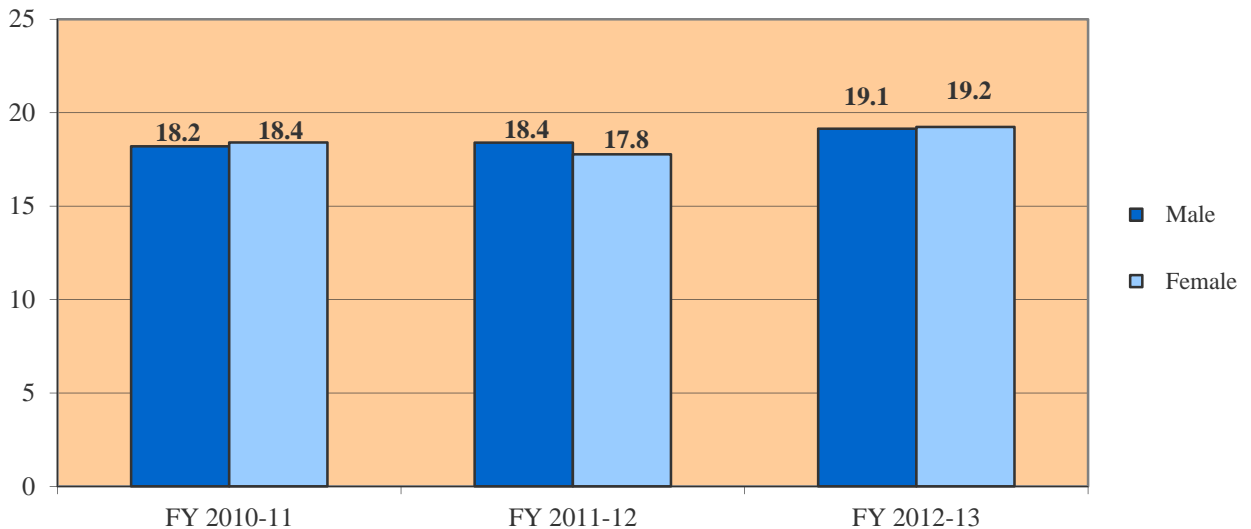
³Colorado Client Assessment Record used to assess mental health needs within one month of commitment. Percentages are based on Total Commitment ADP of CCARs given at time of assessment.

⁴According to Sex Offender Management Board (SOMB) Standards.

COMMITMENT POPULATION
LENGTH OF SERVICE (LOS) TRENDS

	FY 2010-11	FY 2011-12	FY 2012-13
GENDER			
Male	18.2	18.4	19.1
Female	18.4	17.8	19.2
TOTAL Commitment LOS (months)	18.2	18.3	19.2
ETHNICITY			
Anglo-American	18.0	18.4	18.8
African-American	19.3	19.5	21.5
Hispanic/Latino	17.5	17.3	18.4
Native American	25.1	20.6	17.5
Asian-American	15.1	19.2	20.7
Other	20.3	21.3	19.4
AGE¹			
11 Years	N/A	36.1	N/A
12 Years	32.9	43.1	24.0
13 Years	24.5	34.4	27.7
14 Years	25.5	23.0	23.8
15 Years	21.7	20.6	23.1
16 Years	17.8	18.6	19.7
17 Years	15.7	16.2	16.4
18 Years	16.1	15.8	16.0
19 Years	12.1	17.6	12.9

**Commitment LOS
(months)**



¹ Refers to Age at Commitment

COMMITMENT OVERVIEW
BY REGION & JUDICIAL DISTRICT

Region ¹	JD	New Commitments	ADP	LOS (months)
Central				
	1st	45	109.4	19.4
	2nd	77	131.1	22.9
	5th	5	4.4	20.2
	18th	74	128.3	19.2
Central Total		201	373.2	20.9
Northeast				
	8th	27	45.2	16.1
	13th	13	12.5	16.6
	17th	58	77.7	18.8
	19th	25	56.7	16.5
	20th	6	11.2	27.8
Northeast Total		129	203.4	17.5
Southern				
	3rd	1	1.6	12.6
	4th	57	121.1	20.0
	10th	23	21.0	17.6
	11th	4	7.9	12.2
	12th	9	13.0	11.9
	15th	1	3.3	0.0
	16th	2	6.1	15.3
Southern Total		97	174.1	18.2
Western				
	6th	8	18.5	16.5
	7th	10	19.0	22.4
	9th	7	12.9	17.4
	14th	3	4.0	13.9
	21st	26	38.1	20.1
	22nd	7	8.0	18.1
Western Total		61	100.4	19.1
Statewide Total		488	851.0	19.2

¹Region is defined here by the JD in which the client was committed. Regional totals are then a sum of their respective judicial districts.

COMMITMENT OVERVIEW

ETHNICITY BY REGION & JUDICIAL DISTRICT

Region	JD	Anglo-American		African-American		Hispanic / Latino		Native-American		Asian-American		Other		TOTAL	
		ADP	%	ADP	%	ADP	%	ADP	%	ADP	%	ADP	%	ADP	%
Central															
	1st	58.7	53.7%	11.5	10.5%	36.8	33.6%	1.1	1.0%	0.3	0.3%	1.0	0.9%	109.4	100%
	2nd	10.4	8.0%	53.9	41.1%	63.4	48.4%	1.4	1.1%	2.0	1.5%	0.0	0.0%	131.1	100%
	5th	2.5	58.1%	0.0	0.0%	1.8	41.9%	0.0	0.0%	0.0	0.0%	0.0	0.0%	4.4	100%
	18th	55.3	43.1%	40.5	31.6%	28.8	22.4%	0.9	0.7%	2.2	1.7%	0.6	0.5%	128.3	100%
Central Total		127.0	34.0%	105.9	28.4%	130.8	35.1%	3.4	0.9%	4.5	1.2%	1.5	0.4%	373.2	100%
Northeast															
	8th	32.4	71.6%	0.8	1.7%	11.3	24.9%	0.8	1.7%	0.0	0.0%	0.0	0.0%	45.2	100%
	13th	6.9	55.1%	1.2	9.8%	4.0	32.3%	0.0	0.0%	0.0	0.0%	0.4	2.9%	12.5	100%
	17th	31.0	39.9%	11.2	14.4%	34.7	44.6%	0.0	0.0%	0.5	0.7%	0.3	0.4%	77.7	100%
	19th	24.0	42.3%	0.5	0.8%	31.4	55.3%	0.0	0.0%	0.6	1.1%	0.2	0.4%	56.7	100%
	20th	5.7	50.5%	0.4	3.7%	4.5	39.9%	0.0	0.0%	0.7	5.9%	0.0	0.0%	11.2	100%
Northeast Total		100.0	49.2%	14.1	6.9%	85.8	42.2%	0.8	0.4%	1.9	0.9%	0.9	0.4%	203.4	100%
Southern															
	3rd	1.0	60.9%	0.0	0.0%	0.6	39.1%	0.0	0.0%	0.0	0.0%	0.0	0.0%	1.6	100%
	4th	58.7	48.5%	27.4	22.6%	29.4	24.3%	0.3	0.2%	3.3	2.8%	2.0	1.6%	121.1	100%
	10th	3.7	17.7%	1.0	4.8%	15.9	75.5%	0.0	0.0%	0.0	0.0%	0.4	2.1%	21.0	100%
	11th	7.9	100.0%	0.0	0.0%	0.0	0.0%	0.0	0.0%	0.0	0.0%	0.0	0.0%	7.9	100%
	12th	2.7	20.8%	0.0	0.0%	10.3	79.2%	0.0	0.0%	0.0	0.0%	0.0	0.0%	13.0	100%
	15th	1.6	48.7%	0.0	0.0%	1.7	51.3%	0.0	0.0%	0.0	0.0%	0.0	0.0%	3.3	100%
	16th	1.9	30.6%	0.0	0.0%	4.3	69.4%	0.0	0.0%	0.0	0.0%	0.0	0.0%	6.1	100%
Southern Total		77.5	44.5%	28.4	16.3%	62.1	35.7%	0.3	0.2%	3.3	1.9%	2.4	1.4%	174.1	100%
Western															
	6th	10.3	55.7%	1.4	7.5%	3.3	17.7%	2.6	14.3%	0.0	0.0%	0.9	4.9%	18.5	100%
	7th	10.8	56.9%	0.0	0.0%	6.2	32.6%	2.0	10.5%	0.0	0.0%	0.0	0.0%	19.0	100%
	9th	6.9	53.6%	0.0	0.0%	6.0	46.4%	0.0	0.0%	0.0	0.0%	0.0	0.0%	12.9	100%
	14th	3.3	81.8%	0.0	0.0%	0.7	18.2%	0.0	0.0%	0.0	0.0%	0.0	0.0%	4.0	100%
	21st	26.9	70.7%	2.3	6.0%	7.1	18.6%	0.3	0.8%	0.6	1.5%	0.9	2.3%	38.1	100%
	22nd	3.6	45.2%	0.0	0.0%	0.9	10.6%	3.5	44.2%	0.0	0.0%	0.0	0.0%	8.0	100%
Western Total		61.8	61.5%	3.7	3.7%	24.1	24.0%	8.5	8.4%	0.6	0.6%	1.8	1.8%	100.4	100%
Statewide Total		366.2	43.0%	152.1	17.9%	302.9	35.6%	13.0	1.5%	10.3	1.2%	6.6	0.8%	851.0	100%

PAROLE POPULATION TRENDS

10 Year Parole Trends

Fiscal Year	Clients Served ¹	Percentage Change +/-	New Intakes	Percentage Change +/-	ADP	Percentage Change +/-	LOS (Months)	Percentage Change +/-
2003-04	1,487	N/A	761	N/A	535.6	-5.6%	8.0	N/A
2004-05	1,596	7.3%	889	16.8%	490.3	-8.5%	7.1	-11.3%
2005-06	1,863	16.7%	898	1.0%	508.7	3.8%	6.4	-9.9%
2006-07	1,908	2.4%	938	4.5%	522.6	2.7%	6.8	6.2%
2007-08	1,431	-25.0%	880	-6.2%	509.4	-2.5%	6.7	-1.5%
2008-09	1,270	-11.3%	740	-15.9%	436.6	-14.3%	6.6	-1.5%
2009-10	1,270	0.0%	799	8.0%	446.9	2.4%	6.7	1.8%
2010-11	1,173	-7.6%	712	-10.9%	418.0	-6.5%	6.7	-0.4%
2011-12	1,056	-10.0%	617	-13.3%	363.0	-13.1%	7.0	3.9%
2012-13	958	-9.3%	532	-13.8%	334.4	-7.9%	6.7	-3.2%

During Fiscal Year 2012-13, the parole population experienced decreases across several areas. The number of clients served decreased by 9.3%, the number of new intakes decreased by 13.8%, and the average daily population also decreased by 7.9%. Length of Service (LOS) also decreased by 3.2%, approximately nine days less than the prior fiscal year's Parole LOS of 7.0 months.

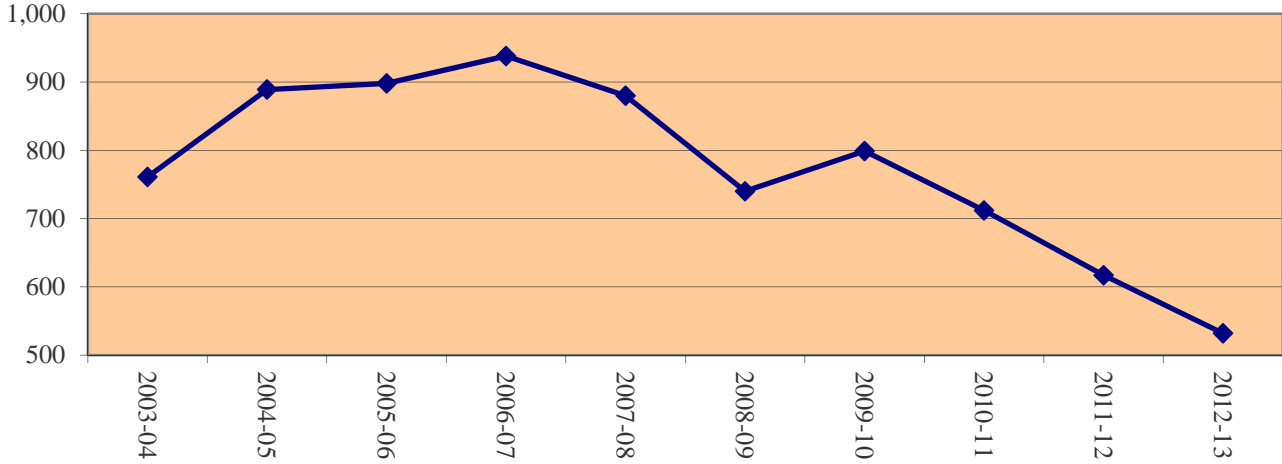
Fiscal Year 2012-13 was the ninth full year following the implementation of Senate Bill 03-284, which shortened the mandatory parole length from nine to six months, effective May 1, 2003. Since the passage of SB 03-284, parole LOS has continued to slightly exceed the mandatory parole period of six months. For high risk youth, the Parole Board has the statutory authority to extend parole for 90 days if determined to be “within the best interest of the juvenile and the public to do so”, or for an additional 15 months if there is a “finding of special circumstances” for youth adjudicated for certain offenses (e.g., violent offense, sex offenses, etc.). A decline in parole LOS was anticipated as a result of the legislation that reduced mandatory parole LOS from nine to six months, and this decline did occur the first two years following implementation. Overall, parole LOS has remained stable for the past seven years, ranging from 6.6 months to 7.0 months.

¹Clients served counts are unduplicated.

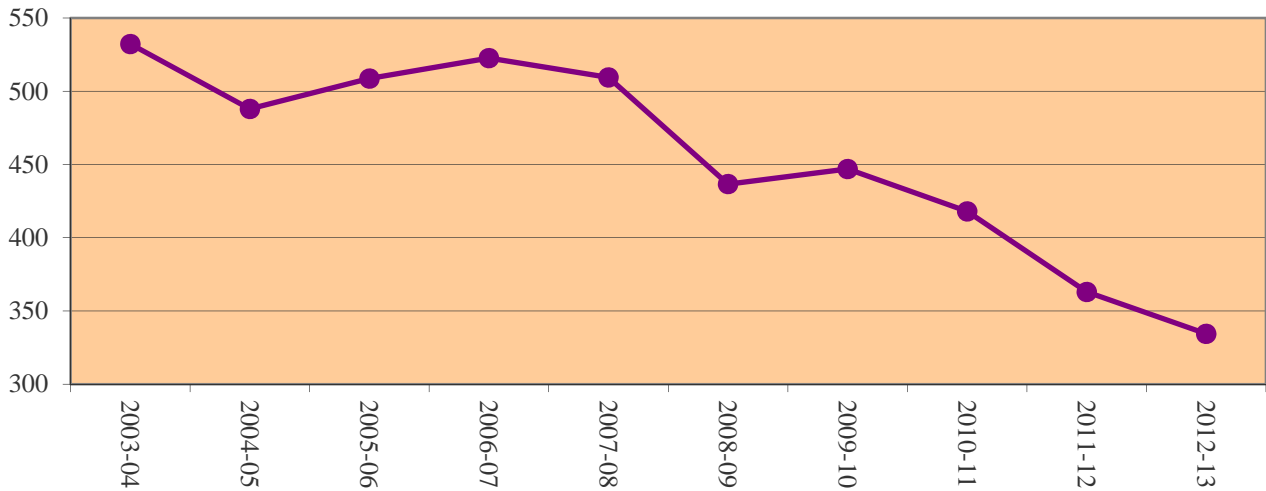
PAROLE POPULATION TRENDS

FY 2003-04 Through FY 2012-13

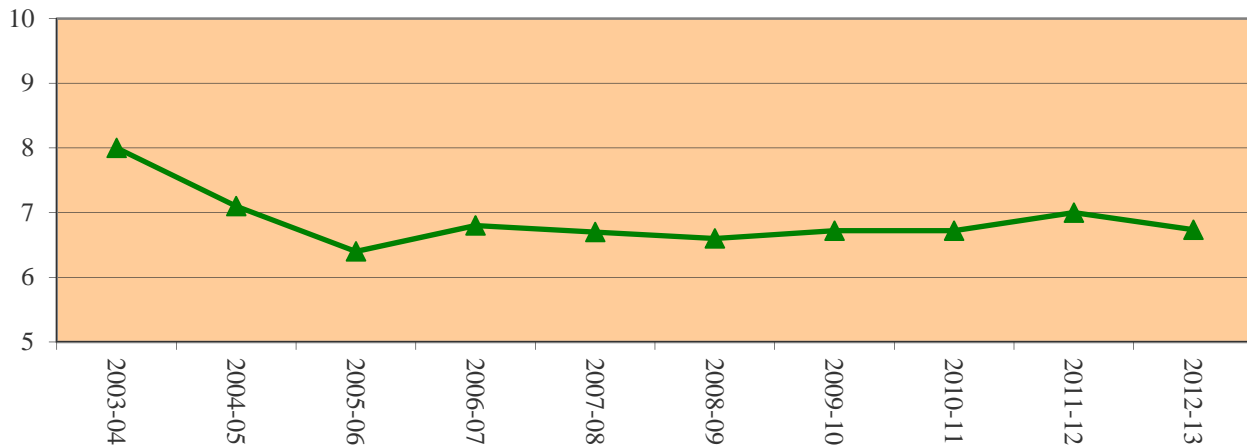
Trends in New Parole Intakes



Trends in Parole ADP



Trends in Parole LOS (Months)



PAROLE POPULATION

DEMOGRAPHIC TRENDS

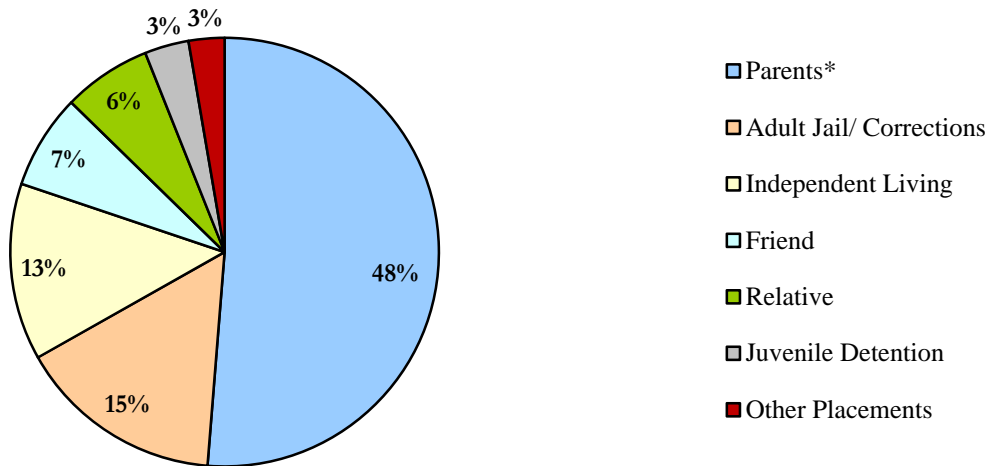
	FY 2010-11			FY 2011-12			FY 2012-13		
	ADP	%	LOS (months)	ADP	%	LOS (months)	ADP	%	LOS (months)
REGION									
Central	186.6	44.7%	6.6	163.2	44.9%	7.3	136.5	40.8%	7.2
Northeast	110.9	26.5%	6.3	97.3	26.8%	6.5	99.4	29.7%	6.6
Southern	81.4	19.5%	7.2	67.8	18.7%	6.9	67.6	20.2%	6.2
Western	39.1	9.4%	7.5	34.7	9.6%	6.9	31.0	9.3%	6.0
TOTAL	418.0	100%	6.7	363.0	100%	7.0	334.4	100%	6.7
GENDER									
Male	364.9	87.3%	6.7	318.6	87.8%	7.1	288.6	86.3%	6.8
Female	53.1	12.7%	6.4	44.4	12.2%	6.2	45.8	13.7%	6.1
ETHNICITY									
Anglo American	182.5	43.7%	6.8	148.5	40.9%	6.8	138.6	41.4%	6.4
African-American	85.4	20.4%	6.9	70.1	19.3%	7.4	59.7	17.8%	7.3
Hispanic/Latino	136.2	32.6%	6.6	133.9	36.9%	6.8	125.7	37.6%	6.8
Native American	9.6	2.3%	5.7	6.3	1.7%	7.7	4.7	1.4%	6.9
Asian-American	2.0	0.5%	6.0	2.8	0.8%	7.0	3.6	1.1%	7.1
Other	2.3	0.6%	6.0	1.4	0.4%	8.2	2.1	0.6%	6.0
AGE¹									
13 Years	0.0	0.0%	6.1	0.0	0.0%	0.0	0.0	0.0%	0.0
14 Years	0.9	0.2%	7.5	0.0	0.0%	9.6	0.0	0.0%	5.8
15 Years	5.3	1.3%	9.1	4.1	1.1%	7.5	6.7	2.0%	8.9
16 Years	18.5	4.4%	7.4	17.1	4.7%	8.7	15.0	4.5%	7.8
17 Years	56.3	13.5%	7.3	52.2	14.4%	7.5	43.6	13.0%	7.6
18 Years	109.0	26.1%	6.6	90.4	24.9%	6.9	71.0	21.2%	7.0
19 Years +	228.1	54.6%	6.3	199.3	54.9%	6.6	198.1	59.2%	6.1

¹LOS for each age category corresponds to age at the time of parole. ADP figures are based on the youth's age on the last day of the fiscal year.

DISCHARGE TRENDS

DISCHARGED YOUTH	FY 2010-11		FY 2011-12		FY 2012-13	
	N	%	N	%	N	%
DISCHARGE PLACEMENT						
Parents*	375	43.6%	280	42.7%	323	48.5%
Adult Jail/ Corrections	84	13.6%	77	11.8%	98	14.7%
Independent Living	97	13.1%	85	13.0%	84	12.6%
Friend	34	6.3%	33	5.0%	45	6.8%
Relative	122	11.2%	103	15.7%	42	6.3%
Juvenile Detention	0	0.0%	0	0.0%	21	3.2%
Other Placements	11	2.3%	13	2.0%	17	2.6%
Transfer to Child Welfare	14	1.7%	16	2.4%	7	1.1%
Homeless	0	0.0%	0	0.0%	7	1.1%
Deported	9	1.2%	7	1.1%	6	0.9%
Job Corps	2	0.2%	6	0.9%	4	0.6%
Escape	1	0.1%	2	0.3%	4	0.6%
Unknown/Data Not Available	13	1.3%	12	1.8%	2	0.3%
Spouse	2	0.4%	4	0.6%	2	0.3%
Shelter Care (Short Term)	3	1.1%	3	0.5%	2	0.3%
Institution (MH/DA**)	10	2.1%	7	1.1%	1	0.2%
Deceased	2	0.0%	2	0.3%	1	0.2%
Residential Child Care Facility	4	1.0%	4	0.6%	0	0.0%
Foster Care Family	1	0.1%	1	0.2%	0	0.0%
Adoptive Family	1	0.1%	0	0.0%	0	0.0%
Group Care	1	0.5%	0	0.0%	0	0.0%
TOTAL	786	100.0%	655	100.0%	666	100.0%

FY 2012-13 Discharge Placement (Top 7)



*Includes: One Parent, Both Parents, Parent and Step-Parent, Step-Parent or Guardian

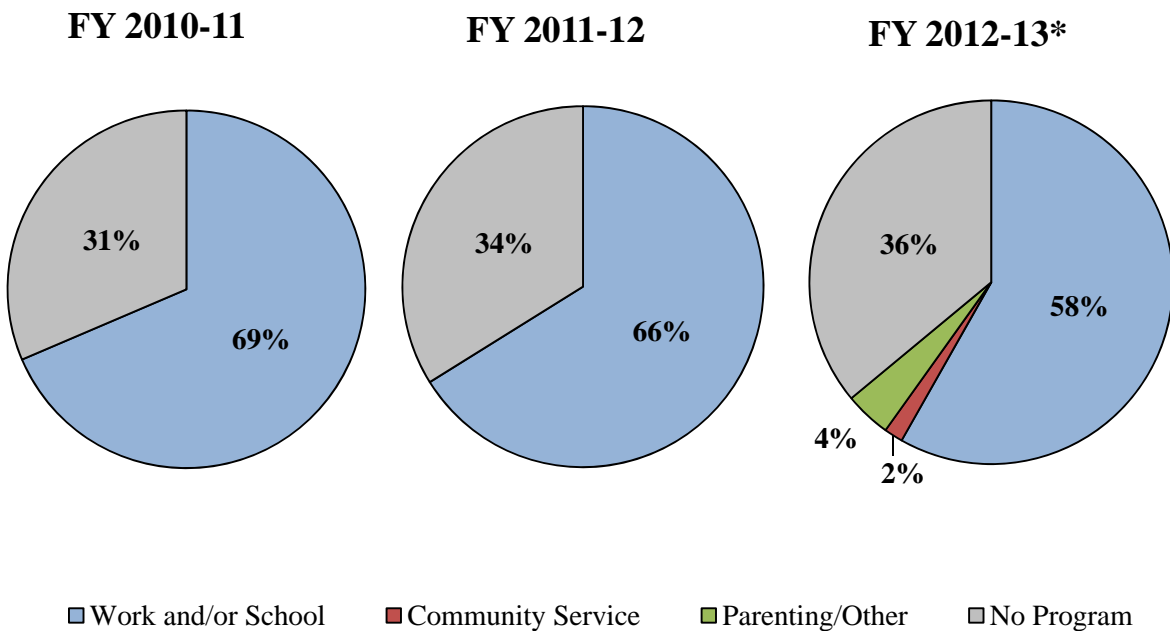
**Mental Health/Drug Alcohol

DISCHARGE TRENDS

DISCHARGED YOUTH		FY 2010-11		FY 2011-12		FY 2012-13*	
PAROLE ADJUSTMENT AT DISCHARGE		N	%	N	%	N	%
Satisfactory to Excellent		458	57.5%	383	58.5%	366	55.0%
Poor to Unsatisfactory		270	33.8%	234	35.7%	269	40.4%
Not on Parole at Time of Discharge ¹		36	6.1%	38	5.8%	31	4.7%
Data Not Available		22	2.7%	0	0.0%	0	0.0%
TOTAL		786	100.0%	655	100.0%	666	100.0%

PROGRAM STATUS AT DISCHARGE		N	%	N	%	N	%
Work Only		167	21.2%	153	23.4%	196	29.4%
School Only ²		168	21.4%	128	19.5%	144	21.6%
Community Service Only		N/A	N/A	N/A	N/A	11	1.7%
Work & Community Service		N/A	N/A	N/A	N/A	11	1.7%
Work, School, & Community Service ³		204	26.0%	135	20.6%	32	4.8%
Parenting		N/A	N/A	N/A	N/A	6	0.9%
Other		N/A	N/A	N/A	N/A	21	3.2%
No Program at Discharge		247	31.4%	213	32.5%	237	35.6%
Data Not Available		0	0.0%	26	4.0%	8	1.2%
TOTAL		786	100.0%	655	100.0%	666	100.0%

Program Status At Discharge by Fiscal Year



*New Program Status categories were created in FY 2012-13 ("N/A" is indicated for prior years, before this detailed data was available).

¹Youth may discharge directly to adult corrections, or directly from a DYC facility or program prior to parole being granted.

²School data includes Vocational Training, starting FY 12-13.

³Community Service data inclusion began FY 12-13.

COMMITMENT POPULATION BY REGION*

DEMOGRAPHIC TRENDS

Fiscal Year 2012-13

	CENTRAL			NORTHEAST			SOUTHERN			WESTERN		
	New Com	ADP	LOS (months)	New Com	ADP	LOS (months)	New Com	ADP	LOS (months)	New Com	ADP	LOS (months)
GENDER												
Male	171	308.9	20.8	111	187.0	17.4	91	153.9	18.2	46	83.2	19.3
Female	28	51.3	21.2	21	29.7	17.9	8	20.3	18.0	12	16.9	18.2
TOTAL	199	360.1	20.9	132	216.6	17.5	99	174.2	18.2	58	100.0	19.1
ETHNICITY												
Anglo-American	71	122.3	19.9	57	103.3	17.6	40	79.9	18.2	42	60.8	20.0
African-American	61	103.4	23.2	16	15.8	19.1	13	29.1	19.9	1	3.7	12.8
Hispanic/Latino	59	125.1	20.2	56	94.8	17.0	42	58.2	17.1	13	24.8	18.8
Native American	2	3.4	18.8	0	0.0	22.0	1	1.1	0.0	2	8.5	15.8
Asian-American	6	5.3	21.1	1	1.9	22.1	2	2.5	13.3	0	0.6	23.1
Other	0	0.6	0.0	2	0.9	17.1	1	3.4	24.0	0	1.8	0.0
AGE ¹												
11 Years	0	0.0	0.0	0	0.0	0.0	0	0.0	0.0	0	0.0	0.0
12 Years	0	0.0	24.0	0	0.0	0.0	0	0.0	0.0	0	0.0	0.0
13 Years	2	0.2	31.6	4	0.1	24.6	4	0.7	24.4	0	0.0	24.4
14 Years	20	1.6	24.4	7	4.4	25.8	7	3.9	21.5	6	1.6	21.8
15 Years	32	18.8	24.1	17	7.9	21.0	12	8.3	26.2	9	9.2	20.8
16 Years	50	51.2	21.8	31	23.2	17.4	19	24.6	19.1	13	8.2	18.9
17 Years	72	83.4	17.4	55	56.1	14.9	36	34.6	16.1	25	23.1	17.4
18 Years	17	104.3	18.7	14	54.2	14.8	19	50.3	14.9	4	38.4	15.5
19 Years and Older	6	100.6	15.8	4	70.6	10.1	2	51.8	11.6	1	19.6	0.0
Average Age at Commitment:	16.8 Years			16.9 Years			16.9 Years			16.8 Years		
SENTENCE TYPE												
Non-Mandatory	142	272.9	20.5	89	113.9	16.7	82	133.7	18.8	23	41.3	20.4
Mandatory	42	57.4	21.0	17	48.8	17.5	15	29.4	16.1	19	30.1	19.0
Repeat	10	16.1	20.4	22	39.5	15.5	2	6.3	12.8	16	25.6	17.4
Violent	2	3.2	19.2	2	3.2	22.4	0	0.8		0	0.0	16.1
Aggravated	3	10.5	42.9	2	11.3	45.7	0	4.0	29.2	0	3.0	18.2

*Regional totals reported here may differ slightly from those in the Annual SB94 Report due to the definition of Region. Region is defined here by active client caseloads (i.e., the region in which the client was served). When reporting information by Judicial District (JD), region is defined by the JD in which the client was committed, and subsequently, are a sum of their respective judicial districts.

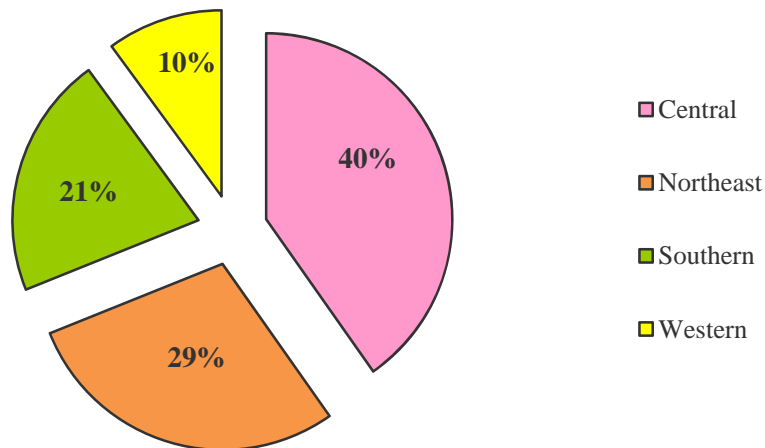
¹Actual counts and LOS for each age category correspond to age at commitment. ADP figures for each age category are based on the youth's age on the last day of the fiscal year.

DISCHARGES BY REGION

Fiscal Year 2012-13

	CENTRAL		NORTHEAST		SOUTHERN		WESTERN	
	N	%	N	%	N	%	N	%
DISCHARGED YOUTH								
DISCHARGE PLACEMENT								
Parents ¹	134	50.0%	99	51.8%	55	39.3%	35	52.2%
Relative	15	5.6%	16	8.4%	8	5.7%	3	4.5%
Independent Living	37	13.8%	19	9.9%	21	15.0%	7	10.4%
Adult Jail/ Corrections	36	13.4%	25	13.1%	28	20.0%	9	13.4%
Friend	14	5.2%	13	6.8%	13	9.3%	5	7.5%
Transfer to Child Welfare	5	1.9%	1	0.5%	1	0.7%	0	0.0%
Unknown/Data Not Available	0	0.0%	0	0.0%	2	1.4%	0	0.0%
Other Placements	9	3.4%	3	1.6%	3	2.1%	2	3.0%
Institution (MH/DA ²)	1	0.4%	0	0.0%	0	0.0%	0	0.0%
Deported	5	1.9%	0	0.0%	1	0.7%	0	0.0%
Juvenile Detention	7	2.6%	8	4.2%	5	3.6%	1	1.5%
Shelter Care (Short Term)	2	0.7%	0	0.0%	0	0.0%	0	0.0%
Spouse	2	0.7%	0	0.0%	0	0.0%	0	0.0%
Job Corps	0	0.0%	0	0.0%	0	0.0%	4	6.0%
Deceased	0	0.0%	1	0.5%	0	0.0%	0	0.0%
Adoptive Family	0	0.0%	0	0.0%	0	0.0%	0	0.0%
Foster Care Family	0	0.0%	0	0.0%	0	0.0%	0	0.0%
Homeless	0	0.0%	5	2.6%	1	0.7%	1	1.5%
Escape	1	0.4%	1	0.5%	2	1.4%	0	0.0%
TOTAL	268	100%	191	100%	140	100%	67	100%

FY 2012-13 Percent of Discharged Youth by Region



¹Includes: One Parent, Both Parents, Parent and Step-Parent, Step-Parent or Guardian

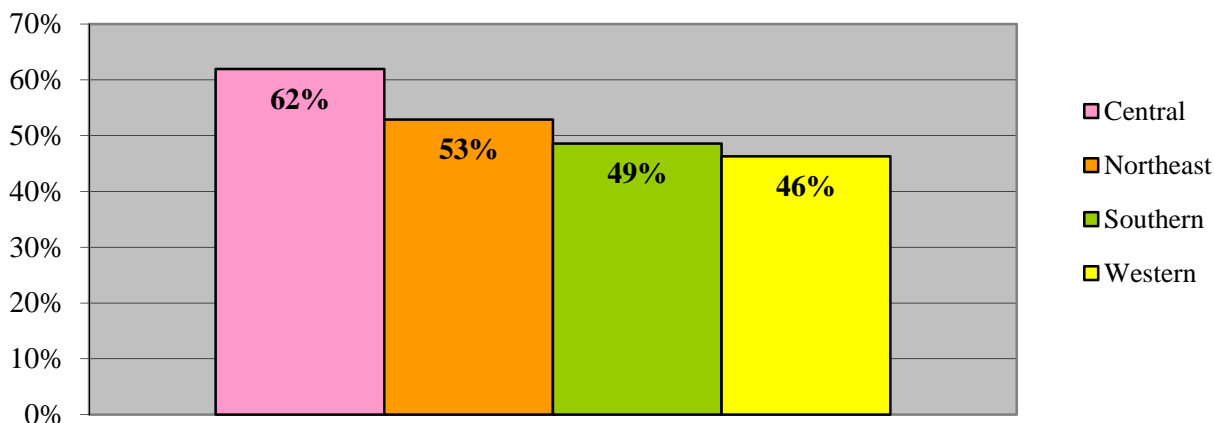
²Mental Health/Drug Alcohol

DISCHARGES BY REGION

Fiscal Year 2012-13

	CENTRAL		NORTHEAST		SOUTHERN		WESTERN	
	N	%	N	%	N	%	N	%
DISCHARGED YOUTH								
PROGRAM STATUS AT DISCHARGE¹								
Work Only	94	35.1%	57	29.8%	34	24.3%	11	16.4%
School/Vocational Training Only	63	23.5%	34	17.8%	23	16.4%	24	35.8%
Community Service Only	6	2.2%	4	2.1%	0	0.0%	1	1.5%
Work & Community Service	3	1.1%	7	3.7%	0	0.0%	1	1.5%
Work, School/Voc. Trng., & Community Service ⁴	16	6.0%	10	5.2%	4	2.9%	2	3.0%
Parenting	1	0.4%	3	1.6%	2	1.4%	0	0.0%
Other	4	1.5%	4	2.1%	13	9.3%	0	0.0%
No Program at Discharge	81	30.2%	72	37.7%	64	45.7%	28	41.8%
TOTAL	268	100%	191	100%	140	100%	67	100%
PAROLE ADJUSTMENT AT DISCHARGE								
Satisfactory to Excellent	166	61.9%	101	52.9%	68	48.6%	31	46.3%
Poor to Unsatisfactory	94	35.1%	82	42.9%	64	45.7%	29	43.3%
Not on Parole at Time of Discharge	8	3.0%	8	4.2%	8	5.7%	7	10.4%
Data Not Available	0	0.0%	0	0.0%	0	0.0%	0	0.0%
PROGRAM TYPE	LOS (Months)							
Secure	9.5		8.8		10.3		10.7	
Staff Supervised	8.7		6.2		5.6		5.1	
Community Residential	2.5		2.4		2.2		2.8	
Total Commitment	20.9		17.5		18.2		19.1	
Parole	7.2		6.6		6.2		6.0	
Total Commitment & Parole	28.1		24.1		24.4		25.0	

'Satisfactory to Excellent' Parole Adjustment at Discharge by Region

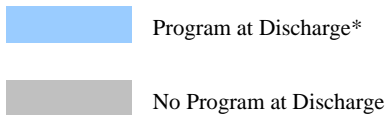


¹Regional trends on this factor are shown on the following page.

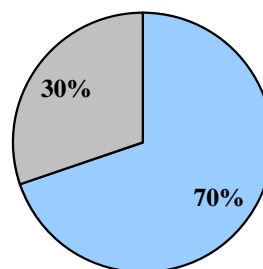
DISCHARGE TRENDS BY REGION

REGION			Program Status					Program Status ¹		TOTAL DISCHRGs
			Work and/or School/Voc. Trng	Community Service	Parenting/ Other	No Program at Discharge	Data Not Available	Program at Discharge*	No Program at Discharge	
Central	FY 12-13	N	176	6	5	81	0	187	81	268
		%	65.7%	2.2%	1.9%	30.2%	0.0%	69.8%	30.2%	
	FY 11-12	N	179	N/A	N/A	94	5	179	99	278
		%	64.4%	N/A	N/A	33.8%	1.8%	64.4%	35.6%	
	FY 10-11	N	211	N/A	N/A	147	0	211	147	358
		%	58.9%	N/A	N/A	41.1%	0.0%	58.9%	41.1%	
Northeast	FY 12-13	N	108	4	7	72	0	119	72	191
		%	56.5%	2.1%	3.7%	37.7%	0.0%	62.3%	37.7%	
	FY 11-12	N	113	N/A	N/A	68	3	113	71	184
		%	61.4%	N/A	N/A	37.0%	1.6%	61.4%	38.6%	
	FY 10-11	N	159	N/A	N/A	59	0	159	59	218
		%	72.9%	N/A	N/A	27.1%	0.0%	72.9%	27.1%	
Southern	FY 12-13	N	61	0	15	64	0	76	64	140
		%	43.6%	0.0%	10.7%	45.7%	0.0%	54.3%	45.7%	
	FY 11-12	N	75	N/A	N/A	42	14	75	56	131
		%	57.3%	N/A	N/A	32.1%	10.7%	57.3%	42.7%	
	FY 10-11	N	103	N/A	N/A	31	0	103	56	134
		%	76.9%	N/A	N/A	23.1%	0.0%	76.9%	23.1%	
Western	FY 12-13	N	38	1	0	28	0	39	28	67
		%	56.7%	1.5%	0.0%	41.8%	0.0%	58.2%	41.8%	
	FY 11-12	N	49	N/A	N/A	9	4	49	13	62
		%	79.0%	N/A	N/A	14.5%	6.5%	79.0%	21.0%	
	FY 10-11	N	66	N/A	N/A	10	0	66	10	76
		%	86.8%	N/A	N/A	13.2%	0.0%	86.8%	13.2%	

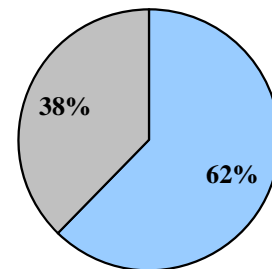
FY 2012-13 Discharges



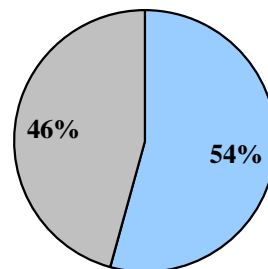
Central



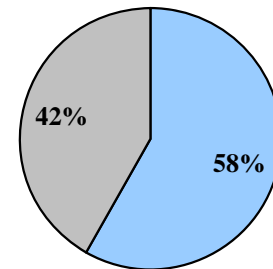
Northeast



Southern



Western

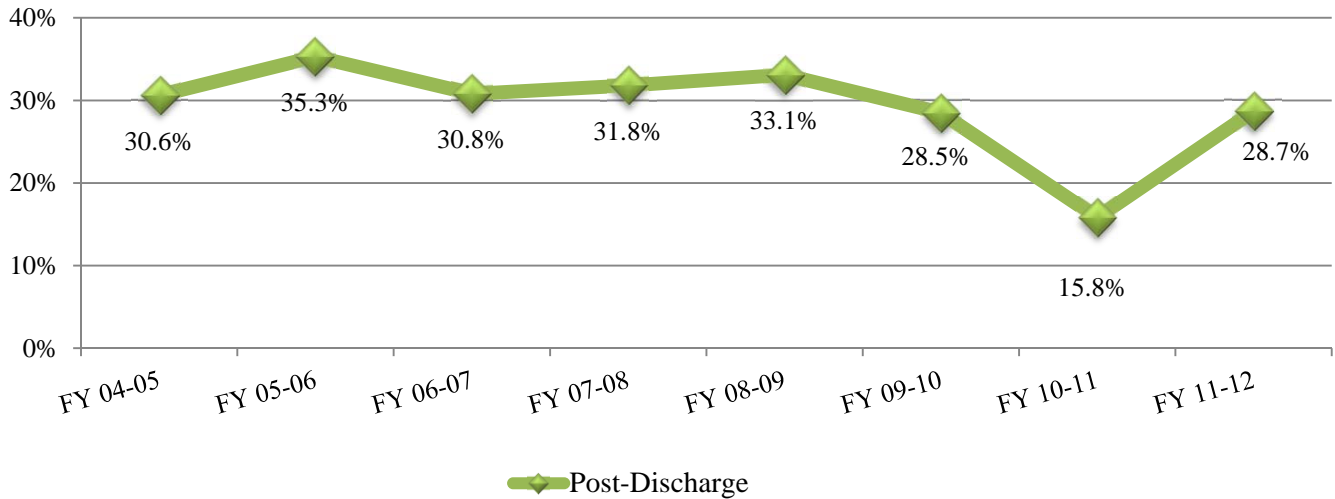


¹This breakdown excludes missing data.

*Includes: The sum of Work and/or School, Community Service, Parenting/Other.

RECIDIVISM TRENDS

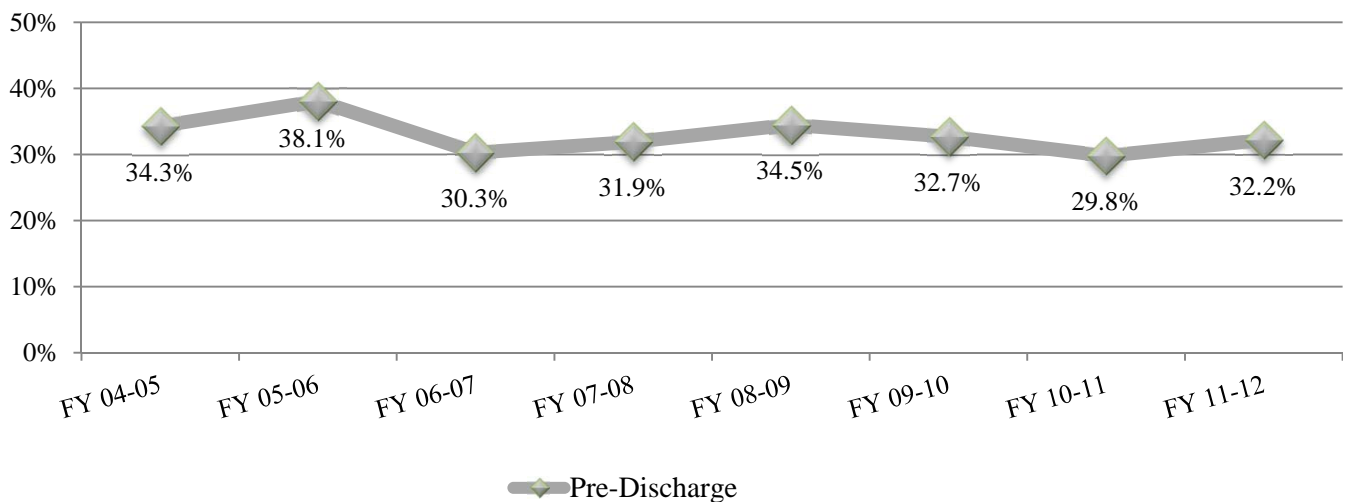
Post-Discharge Recidivism Rates FY 2004-05 through FY 2011-12



The most current DYC recidivism rates, reported in this manual, are associated with youth who discharged in FY 2011-12. These rates were initially published in the Division's annual Recidivism Report, released January 1, 2014. This time lag allows the Division to track all youth, following their discharge (post-discharge), for a period of one year before reporting out recidivism rates. This trend graph shows that recidivism rates have ranged from 15.8% (FY 2010-11) to 35.3% (FY 2005-06).

When compared to other states that measure juvenile recidivism in a similar fashion (new adjudication or conviction for a felony or misdemeanor offense), Maryland (19%), Louisiana (19%), Maine (22%), Colorado (29%), and Idaho (30%) have the lowest one-year recidivism rates in the nation.

Pre-Discharge Recidivism Rates FY 2004-05 through FY 2011-12



Colorado is one of few states that tracks pre-discharge recidivism rates, or re-offending that occurs while the youth is under the custody of DYC. Pre-discharge offending includes new adjudications or convictions that occur while a youth is in residential placement or on parole status.

Glossary of Terms Used

Disclaimer: *These definitions are provided for quick reference purposes only. Please refer to the Colorado Revised Statutes for more complete definitions of legal categories and conditions.*

Adjudication – The result of an adjudicatory hearing in which the court determines that it has been proven beyond a reasonable doubt that a juvenile has committed a delinquent act, or that a juvenile has pled guilty to committing a delinquent act.

Aggravated Offender (Sentence Type) – see *Sentencing Special Offenders*.

Assessment - Youth committed to DYC are assessed to determine a youth's classification and risk level, as well as needs for appropriate services, placement and program referral.

Average Daily Population (ADP) - The average number of youth present in a facility or program during the reporting period.

Colorado Client Assessment Record (CCAR) - An assessment tool used to evaluate mental health treatment needs.

Colorado Juvenile Risk Assessment (CJRA) - An assessment tool used to determine risk of recidivism. The comprehensive, empirically validated risk assessment allows the Division to identify and respond to the criminogenic factors directly contributing to youth offending behavior.

Community Accountability Program – Youth could be sentenced to the Community Accountability Program (CAP) as a condition of probation, after the cessation of the Regimented Juvenile Training Program. The sentence included a 60-day residential program, focusing on restorative justice and youth skill development. The residential phase was followed by an intensive aftercare program for 120 days, or until the period of probation expires. The aftercare phase, also based on a restorative justice model, focused on continued service delivery to youth and families as well as reintegration into the community. Funding for CAP was eliminated in the FY 2002-03 Supplemental Reduction.

Clients Served: Commitment & Parole - The total number of youth served in a particular program during the reporting period. Total clients served in a given category (e.g. secure or staff-supervised) represent unduplicated counts of clients served in those categories. Since youth can be served in more than one type of program in the course of a year, the total clients served in a particular category will not equal the sum of the clients served in each program.

Clients Served: Detention - The total number of youth served in a particular program during the reporting period. Total clients served in a facility or program (e.g. Adams YSC) represents unduplicated counts of clients served in those facilities. Since the same youth can have multiple admissions to detention and be served in more than one particular facility in the course of a year, the total clients served in all facilities will not equal the sum of the clients served in each facility.

Commitment - Commitments are dispositions of juvenile cases resulting in the transfer of legal custody to the Department of Human Services by the court as a result of an adjudicatory hearing on charges of delinquent acts committed by the youth.

Commitment Sentence Type - Juveniles who have been adjudicated delinquent and committed to the Division of Youth Corrections can be given either non-mandatory or mandatory sentences. Mandatory sentences require that a youth spend a specified minimum amount of time in out-of-home placement and can include repeat and violent offenders. Juveniles can also be sentenced as aggravated offenders (Section 19-2-601, C.R.S.).

Community Residential Placement – DYC contracts with a number of private vendors to provide community-based programs to youth presenting the lowest risk of re-offending and youth transitioning from more secure programs.

Detention - The custodial status of youth who are being confined or supervised after arrest or while awaiting the completion of judicial proceedings. Detention youth are served in secure state-operated or staff-secure (privately-operated) facilities. Some detention youth are served in non-residential, community-based supervision programs.

Detention Admission - Each admission to detention for temporary custody of youth is tracked independently. In contrast to unduplicated counts of clients served in detention, one youth can have multiple admissions for a single incident. For example, if a youth is admitted to detention on a pretrial basis (preadjudicated) and released, a later sentencing to detention on the original charge would count as a separate admission, even though it is the same youth and the same incident. Likewise, if the youth serves the sentence on weekends, each weekend admission counts as a separate admission.

Detention Capacity Strain – Percentage of days where detention bed usage is at or above 90% of capacity.

Detention Maximum Bed Usage – Represents the maximum number of youth in detention at any given point during the day.

Detention Screen - Refers to Colorado SB94 Juvenile Detention Screening and Assessment Guide (JDSAG), which is a screening guide designed to enhance consistency in the detention screening process.

Detention Sentence - The court imposed sanction of confinement to a detention facility as a disposition of a delinquency adjudication. Major sentence types include probation sentences, traffic sentences, handgun sentences, municipal sentences, game and fish sentences, contempt sentences, and non-probation sentences for a delinquent act.

Discharge - Time at which youth have completed their commitment and are no longer under the supervision and custody of the Division; most often directly following the completion of the parole period.

Initial Commitment Classification Instrument (ICCI) - An objective commitment classification instrument is administered during assessment to guide the placement decisions concerning the type of commitment program most suitable for individual youth given the severity of their commitment offense coupled with the risk of re-offending.

Interstate Compact on Juveniles (ICJ) - A cooperative program amongst states and jurisdictions that provides for the uniform interstate supervision of juveniles on probation or parole.

Length of Service (LOS): Commitment - All commitment LOS figures are measured in months and are calculated for those discharged youth who spent time in the program for which LOS is reported (e.g., assessment, secure, staff secure, and community programs) prior to parole.

Length of Service (LOS): Parole - The amount of time spent on parole status. Parole LOS is measured in months and is based on discharged youth.

Length of Service (LOS): Commitment & Parole - The average amount of time in DYC custody (sentence start date to discharge date including parole) for all youth discharged from DYC during the reporting period, not including escape time.

Length of Stay (LOS): Detention - The amount of time spent in a detention facility or program during the time period. All detention LOS figures are measured in days and are based on released youth.

Mandatory Sentence Offender- See *Sentencing Special Offenders*.

Municipal Sentence - Detention sentence imposed by a municipal court for violation of municipal ordinances.

New Commitment - Commitment of youth who were not previously committed, or who were previously committed but had been discharged from DYC.

Non-Mandatory Sentences - These sanctions involve no minimum out-of-home sentence length. The maximum sentence length cannot exceed 24 months. The Juvenile Parole Board determines release from commitment to parole status.

Other Residential – Placements include Job Corps, Group Homes, Hospitalization, etc.

Parole - The status of an offender conditionally released from a residential setting by discretion of the Juvenile Parole Board. Colorado juvenile offenders have a mandatory minimum parole length of 6 months. While on parole a youth is placed under the supervision of a parole officer and is required to observe conditions of release set by the parole officer and the Juvenile Parole Board.

Parole Revocation - The administrative action of the Juvenile Parole Board, which removes a youth from parole status in response to a violation of lawfully required conditions of parole, including the prohibition against commission of a new offense.

Parole Suspension - The administrative action of the Juvenile Parole Board, which removes a youth from parole status in response to a violation of lawfully required conditions of parole, including the prohibition against commission of a new offense. Reconsideration of parole must occur within 90 days on a date determined by the Juvenile Parole Board.

Parole Violation – Actions by a parolee that do not conform to the conditions of parole.

Preadjudicated - The legal status of youth pending delinquency adjudication decisions. Often these youth are referred to as pre-trial youth since they are generally admitted to detention pending some court action. This category also includes youth who are serving a sentence, such as probation, on a prior delinquency adjudication and who are in detention pending a new court action.

Prior Adjudications - Adjudications that occurred prior to the current detention or commitment event.

Prior Out-of-home Placements - Placements in Social Services or DYC residential programs or other treatment programs prior to the current commitment sentence.

Recidivism (Post-Discharge) – A filing for a new felony or misdemeanor offense that occurred within one year following discharge from the Division of Youth Corrections.

Recidivism (Pre-Discharge) - A filing for a new felony or misdemeanor offense that occurred prior to discharge (while the youth is under DYC supervision) from the Division of Youth Corrections.

Repeat Offender - see *Sentencing Special Offenders*.

Regional Management Structure - Decentralized DYC management structure comprised of four geographic regions in the state.

Residential Programs - Programs that provide 24-hour care.

Secure Residential Facility – A facility with physical security features such as locked doors, sally-ports, and correctional fencing.

Sentencing Special Offenders (see Section 19-2-908, C.R.S.)

- a. ***Mandatory Sentence Offender*** – These sanctions specify a minimum time period of up to 24 months or less during which a youth must be in an out-of-home placement.
- b. ***Repeat Offender (Sentence Type)*** - A 'repeat' sentence type can be imposed on a juvenile who has been previously adjudicated a juvenile delinquent, and is adjudicated a juvenile delinquent for a delinquent act that constitutes a felony, or if his or her probation is revoked for a delinquent act that constitutes a felony. The court may or may not designate a minimum sentence length.
- c. ***Violent Offender (Sentence Type)*** - A juvenile may be sentenced as a violent offender if he or she is adjudicated a juvenile delinquent for a delinquent act that constitutes a crime of violence as defined in Section 16-11-309(2), Colorado Revised Statutes.
- d. ***Aggravated Offender (Sentence Type)*** – These sanctions specify a time period of three to seven years, during which time a youth must remain in the custody of the Department of Human Services. Contingent upon court approval, youth may be eligible for non-secure placement, parole, or transfer to the Department of Corrections (adult corrections).

Staff-Supervised Residential Facility – Privately owned and operated, staff-supervised facilities provide 24-hour line of sight supervision of youth.

State Owned / Privately Operated Programs - Detention or commitment programs which are administered by contract service providers in NYC owned facilities.

State Owned / State Operated Programs - Detention or commitment programs which are administered by NYC employees in NYC owned facilities.

Violent Offender (Sentence Type) – see *Sentencing Special Offenders*.