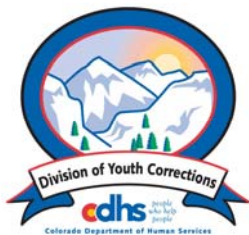


Fiscal Year 2011 - 2012

**Management Reference Manual**



**Colorado Department of Human Services  
Office of Children, Youth and Family Services  
Division of Youth Corrections**

---

*Working with Colorado Communities to Achieve Justice*

March 2013

This manual provides the information most often requested on DYC client populations. Any questions concerning the data presented in this manual may be directed to the Research and Evaluation Unit, Division of Youth Corrections, 4255 S. Knox Court, Denver, CO 80236, or [Ann.Duenas@state.co.us](mailto:Ann.Duenas@state.co.us)

**Colorado Department of Human Services  
Division of Youth Corrections**



March, 2013

<http://www.colorado.gov/cdhs/dyc>

# STATE OF COLORADO



**Colorado Department of Human Services**

*people who help people*

**OFFICE OF CHILDREN, YOUTH AND FAMILIES**  
Julie Krow, MA, LPC, Director

**DIVISION OF YOUTH CORRECTIONS**  
John Gomez, Director

4255 South Knox Court  
Denver, Colorado 80236  
Phone 303-866-7345  
FAX 303-866-7344  
[www.cdhs.state.co.us](http://www.cdhs.state.co.us)



John W. Hickenlooper  
Governor

Reggie Bicha  
Executive Director

The Colorado Department of Human Services, Division of Youth Corrections (DYC) is pleased to release its FY 2011-12 Management Reference Manual. The manual is designed to provide 'frequently requested' population information on youth served by the Division during the prior fiscal year (FY) and trend data over several years.

The Division operates several programs and initiatives, including Detention (which includes SB94), Commitment, and Parole programs throughout the state. In accordance with national juvenile justice population trends, DYC has experienced population declines in many of these areas over the last few years.

Detention clients served, the number of new admissions, average daily population (ADP), and length of stay all experienced declines in FY 2011-12. Maximum bed usage, a concept that captures the daily utilization of detention beds around the state, averaged 320 youth, or 76% of the 422 (newly implemented) limited detention capacity during FY 2011-12. Reason detained data for the same time period show that the majority of youth detained had warrants or remands (45%) or were pre-adjudicated for an offense (38%). The remaining youth were detained as a result of detention sentences (15%), probation violations (1%), other holds (0.7%), or were DYC committed youth with new charges (0.1%).

The commitment population also witnessed declines across most categories in FY 2011-12, including average daily population (-6%), clients served (-12%), and new commitments (-18%). Length of service increased nominally from 18.2 to 18.3 months total time in a commitment residential placement. Although the number of youth served by the Division has declined, the acuity and complexity of those youth and their treatment service needs are on the rise. Based upon Colorado Juvenile Risk Assessment (CJRA) trend analyses, youth are scoring higher in risk in multiple CJRA domains over the past five years. In fact, eleven of the thirteen domains experienced increases since last year, the highest proportion over the past 5 years.

Similar to the declines in other areas, the Division's parole population experienced several decreases in FY 2011-12, specifically in the areas of clients served, ADP, and new intakes. However, length of service actually increased from 6.7 to 7.0 months (+4%). This increase in length of parole, or the period of transitioning back into the community, may be an artifact of more serious, acute and complex youth committed to the Division.

Thank you for your interest in the Division of Youth Corrections. Additional information is available on the Division's web site at <http://www.colorado.gov/cdhs/dyc>.

Sincerely,

A handwritten signature in blue ink that reads 'John Gomez'.

John Gomez  
Director, Division of Youth Corrections

# Division of Youth Corrections

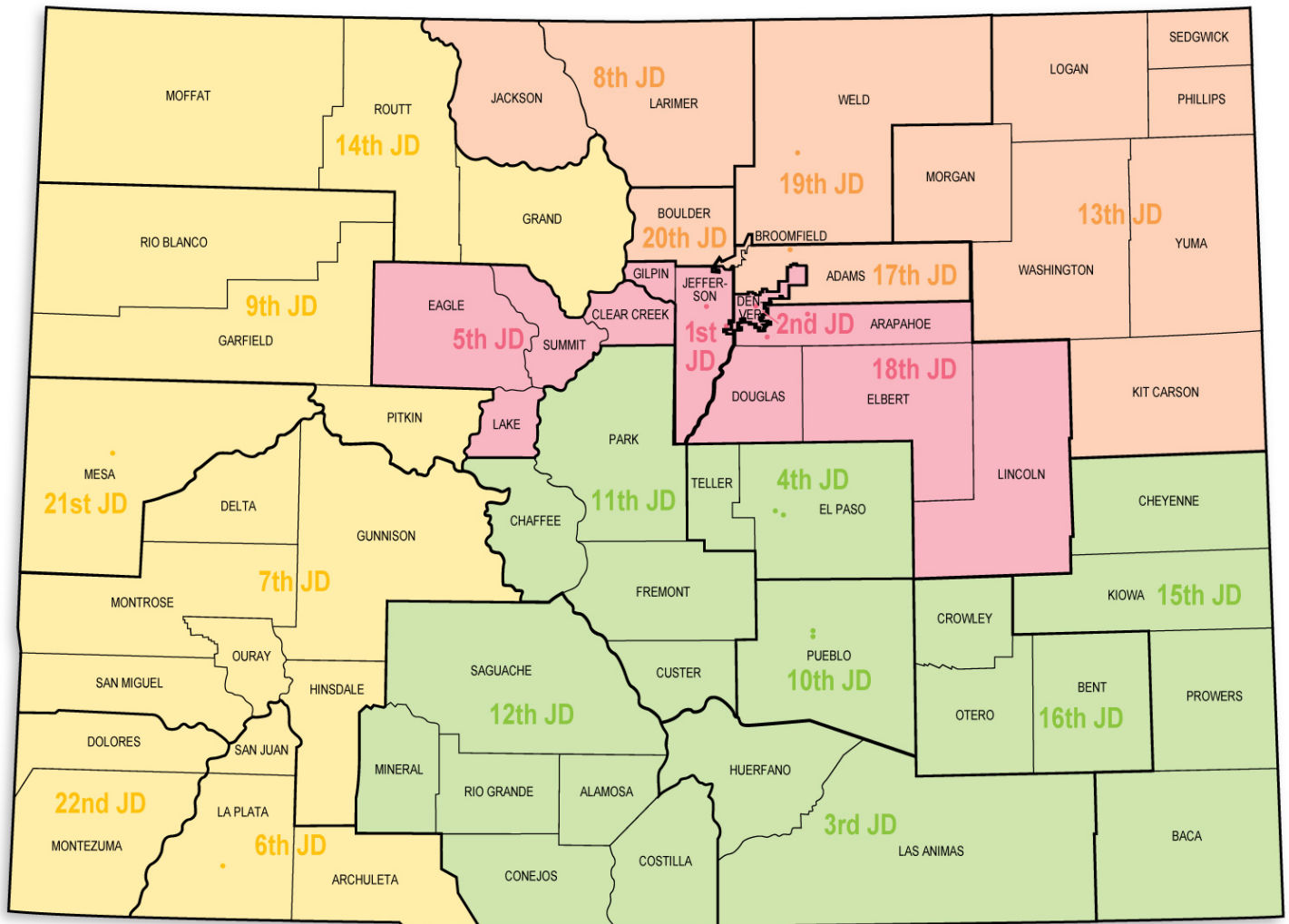
## Regional Management Structure

Central Region

Northeast Region

Southern Region

Western Region



**Management Reference Manual**  
**Fiscal Year 2011-2012**

---

<b>Executive Summary</b>	i
<b>Section I: Colorado State Totals</b>	
Filtering Process to Detention	1
Filtering Process to Commitment	2
All Clients Population Data	3
<b>Section II: Senate Bill 94 Program Services</b>	
Program Outcomes, ADP & JDSAG Overview	4
<b>Section III: Detention Program Services</b>	
Detention Population Trends	5
Detention Maximum Bed Usage Trends	7
Detention Reason Detained Overview	8
Detention Population by Program	9
Detention Population Trends, ADP by Program	10
Detention Population Demographic Trends	11
Detention Admission Demographic Trends by Gender	13
Detention Admission Demographic Trends by Ethnicity	14
Detention Population Overview by Region & Judicial District	16
<b>Section IV: Commitment Program Services</b>	
Commitment Population Trends	17
New Commitment Trends by Previous Juvenile Justice Involvement	19
Commitment Population Trends by Program Type	20
Commitment Population, Clients Served & ADP by Program	21
New Commitment & ADP Demographic Trends	23
New Commitment Demographic Trends by Gender	24
New Commitment Demographic Trends by Ethnicity	27
New Commitment Trends by Youth Acuity (CJRA Risk)	31
New Commitment Trends by Commitment Classification	32
Commitment Population ADP Trends & Special Populations	33
Commitment Population Length of Service Trends	34
Commitment Overview by Region & Judicial District	35
Commitment Overview, Ethnicity by Region & Judicial District	36
<b>Section V: Parole Program Services and Discharges</b>	
Parole Population Trends	37
Parole Population Demographic Trends	39
Discharge Trends	40
<b>Section VI: Regional Summaries</b>	
Commitment Population Demographic Trends	42
Discharge Trends	43
<b>Section VII: Recidivism</b>	
Recidivism Trends	46
<b>Glossary of Terms</b>	Appendix

---

## **Fiscal Year 2011-12 Executive Summary**

The Management Reference Manual is designed to provide ‘frequently requested’ population information on youth served by the Division of Youth Corrections (DYC) during the previous fiscal year (FY) and trend data from several years prior. Section I contains statewide population summary information, Section II provides information on the Senate Bill 94 program and population, Sections III and IV provide more detailed data describing the detained and committed populations, respectively. Section V contains the Division’s parole and discharge data, Section VI contains regional summaries, and Section VII provides recidivism results and trends. A report summary is provided below.

### **Senate Bill 94:**

The Senate Bill 94 (SB94) program continues to produce successful outcomes, with 96% of cases terminating without any new charges, 98% terminating without failing to appear for court, and 92% terminating with a positive or neutral leave reason. The program also continues to serve the majority of the detention continuum in the community (83.2%), in comparison with youth served in secure detention placements (16.9%) and staff-secure contract placements (0.5%).

### **Detention:**

On May 5, 2011, Senate Bill 11-217 was signed into law. This legislation (19-2-1201 C.R.S) further reduced the “cap” or limit on detention beds from 479 to 422, effective July 1, 2011. A review of trends in average daily population (ADP) over the past 10 years shows a steady decline in ADP since the high of 545 in FY 2001-02. With the current cap, the detention population can never exceed 422 statewide. Each of the State’s 22 judicial districts are allocated a portion of the 422 beds. Statutory language provides that districts may borrow beds within an established ‘catchment’ area. Statutes also contain provisions for emergency release of detained youth in the event that a district is unable to borrow a bed.

During FY 2011-12, ninety-seven percent of detained youth were held in State-Operated facilities. Since the first detention cap was implemented in 2003, there has been a decreased reliance on Privately-Operated placements. Only three percent of this year's ADP was detained in a contracted secure or staff secure facility.

Maximum Bed Usage captures the daily utilization of detention beds around the state. Maximum Bed Usage represents the maximum number of youth in detention at any given point during the day. In FY 2011-12, on average, the state was operating at a maximum daily count of 320 youth, or 76% of the 422 limited bed capacity. With declines in the detention population, DYC has also witnessed a reduction in “capacity strain”, a measure that captures the percent of days when maximum bed usage was at or above 90% of the statewide capacity. During FY 2005-06, the Division peaked in the amount of time it operated in the capacity strain at 66% of the time. Since then, there has been a decline in

the amount of time DYC experienced capacity strain. For the past two years, DYC has not witnessed capacity strain at the statewide level.

The average length of stay (LOS) for a youth in detention decreased in FY 2011-12 by 0.6 days, declining from an LOS of 15.3 days to 14.7 days. The number of clients served followed a nine-year trend of decline, with a decrease of 9% since last year. The number of new detention admissions also decreased this year, by 8%, making it a 24-year low. Because of the capping legislation, declines in detention admissions were anticipated; juvenile justice agencies, once again, were required to reevaluate their utilization of this limited resource. Instead of viewing detention beds as an at-will resource, juvenile justice agencies adopted the policy shift of reserving the most secure component of the detention continuum for those youth who present the greatest risk to public safety.

FY 2011-12 'reason detained' figures show that the majority of youth detained were youth with warrants or remands (45.4%) or pre-adjudicated youth (37.5%). The remaining youth were detained due to detention sentences (15.2%), probation violations (1.1%), other holds (0.7%), or were DYC committed youth pending new charges (0.1%).

**Commitment:**

During FY 2011-12, the committed population experienced a year of decline in all areas, except LOS which increased to 18.3. Commitment ADP experienced a decrease of 58.2 ADP (six percent), going from 1,041.3 in FY 2010-11 to 983.1 in FY 2011-12. Clients served decreased by eleven percent, the seventh decrease in the past ten years, with the first decrease of 2.1% occurring in FY 2002-03. The number of new commitments also decreased by 18%, with 533 in FY 2011-12. For the past ten years, the number of new commitments had fluctuated between 646 and 950 each year, however, this year, new commitments dropped to the lowest since FY 1990-91 when there were 543 commitments.

Although the Division has witnessed fewer new youth committed, the average acuity of those committed continue to increase. The rising complexity and seriousness of these youth is based on analysis that show youth scoring higher in risk on multiple CJRA domains, including the areas of school (current), relationships, family, alcohol and drug, mental health, and attitudes and behavior when measured at the time of first assessment. The only two CJRA domains that have shown acuity decreases were the criminal history domain, and the relationships history domain.

In regard to Commitment ADP decreases, Colorado's dropping juvenile commitment rate mirrors a nation-wide trend of decline in this area. This population decrease is certainly an artifact of the consistent decline in the number of new commitments for the past seven fiscal years as well. In addition, the impact of the Continuum of Care may also be somewhat reflected in the decrease of commitment ADP for the past five years. With all other commitment figures experiencing decreases, commitment length of service (LOS) increased slightly to 18.3 compared to 18.2 in FY 2010-11. This is a shift in momentum considering a notable decrease from last year's 3.8% decline in LOS.

**Parole:**

Similar to the Detention and Commitment populations, the Parole population experienced declines across most areas this fiscal year. Clients served totaled 1,056, a 10% decline from FY 2010-11. Like the Commitment population, LOS increased. This increase was close to 4% and is notable as Parole LOS has not been in the seven month range since FY 2004-05.

Fiscal Year 2011-12 was the eighth full year following the implementation of Senate Bill 03-284, which shortened the mandatory parole length from nine to six months, effective May 1, 2003. Since the passage of SB 03-284, the parole LOS has slightly exceeded the mandatory parole period of six months. For many high risk youth, the Parole Board has the statutory authority to extend parole for 90 days if determined to be “within the best interest of the juvenile and the public to do so”<sup>1</sup> or for an additional 15 months if there is a “finding of special circumstances” for youth adjudicated for certain offenses (e.g., violent offense, sex offenses, etc.)<sup>1</sup>. A decline in parole LOS was anticipated as a result of the legislation that reduced mandatory parole length of stay from nine to six months, and this decline did in fact occur the two years directly following implementation. Later, in FY 2006-07, Parole LOS increased slightly to 6.8 months, and has remained fairly stable at 6.6 and 6.7 months for the past four years. However, it has gone up to 7.0 this fiscal year and may be the result of the higher acuity level of clients served.

**Recidivism:**

The recidivism rate trends contained in this manual are based upon youth that discharged from the Division in the specified Fiscal Years. The most recent results are from youth who discharged in FY 2010-11, and in order to be more comparable to other states, a new definition of recidivism has been adopted. Due to the retrospective nature of reporting recidivism rates, these figures are the most recent rates currently available, published January 2013. Over the past seven years, pre-discharge recidivism rates have ranged from 29.8% (FY 2011-12) to 38.1% (FY 2005-06). This year’s pre-discharge recidivism rate, 29.8%, is the lowest reported in recent years. The post-discharge recidivism rate, 15.8% for youth discharged in FY 2010-11, is a marked (statistically significant) decline from the rate reported for FY 2009-10 discharges. Prior to this most recent study, rates were between 28.5% and 35.3%. Nationally, Colorado, North Dakota and Missouri compete for the lowest juvenile recidivism rates, when comparing states with similar definitions and measures of post-discharge recidivism.

---

<sup>1</sup> 19-2-1002 (5)(a)(I), C.R.S.



*\*Data based on new admissions in FY 2011-12 are not representative of the total detention population.*

*\*Data based on new commitments in FY 2011-12 are not representative of the total committed population.*

## **I. STATE TOTALS Fiscal Year 2011-12**

### **A. Juvenile Justice Filtering Process to Detention**

- There were 7,751 new admissions to DYC Detention during FY 2011-12. This represents 1.4% of the 10-17 year old Colorado population, and it represents 22.7% of Colorado's juvenile arrests.
- Admissions are down 8% from last FY, representing a 24-year low. DYC has witnessed declines in new admissions for the past nine of ten fiscal years.

### **B. Juvenile Justice Filtering Process to Commitment**

- There were 533 new commitments to DYC during FY 2011-12. This represents 0.1% of the 10-17 year old Colorado population, and it represents 5.3% of Colorado's 10,019 juvenile filings<sup>2</sup>.
- This commitment rate (9.7 youth per 10,000 youth in the Colorado population), as well as the three previous years' rates, have decreased from the fairly constant rate of 15.0 for the preceding ten fiscal years.

### **C. Clients Served**

- There were 6,568 youth served in DYC programs<sup>3</sup> during FY 2011-12, which reflects an unduplicated count of individual youth. There were 4,766 youth served in detention programs, 1,960 youth served in commitment programs, and 1,056 youth served in parole services.

### **D. DYC Population Summary**

- There was an ADP of 316.8 detained youth, which marks the sixth year of decline.
- There was an ADP of 983.1 committed youth, which is an 6% decline from the previous year.
- After ten years of increases in commitment ADP, FY 2011-12 was the sixth year of decline. In fact, in the past six years combined, there has been a 38% decrease (-2.0% in FY 2006-07; -9.6% in FY 2007-08; -4.6% in FY 2008-09; - 4.7% in FY 2009-10; -11.1% in FY 2010-11, and -5.6% in FY 2011-12).
- There was an ADP of 363.0 paroled youth for FY 2011-12.
- There were 7,751 new admissions to detention, which is a 24-year low.
- There were 533 new commitments in FY 2011-12, a 17-year low.

<sup>2</sup> Colorado Judicial Branch FY 2012 Annual Statistical Report.

<sup>3</sup> Does not include all clients served by Senate Bill 94.

## **II. SENATE BILL 94 POPULATION Outcomes and Program Details**

### **A. Outcomes**

- In FY 2011-12, 96% of SB94 cases terminated with youth acquiring no new charges, 98% of cases terminated without failing to appear (FTA) for court, and 92% of cases terminated with a positive or neutral leave reason.

### **B. Program Details**

- Based on average daily population, SB 94 served 83% of the detention continuum in the community in FY 2011-12, 17% of the ADP in secure detention placements, and less than one percent of the ADP in staff secure (contract) detention placements.
- JDSAG<sup>4</sup> results show that 83.2% of youth screened by the SB94 program statewide are initially placed in secure detention, followed by 9.5% sent home with services, 6.0% released without services, 0.9% placed in staff secure detention, and 0.4% placed in residential or shelter placements.

## **III. DETENTION POPULATION Trends and Characteristics**

### **A. Population Trends**

- Detention ADP for FY 2011-12 was 316.8, a 22-year low. The lowest Detention ADP prior to this fiscal year was in FY 1989-90, when it was 344.5.
- With 7,751 Detention Admissions, this represents a 24-year low.
- Ninety-seven percent of detained youth were held in State-Operated facilities, essentially the same percent as in previous years. Since the detention cap was implemented, there has been a decreased reliance on Privately-Operated placements. Only three percent of this year's ADP was detained in a contracted secure or staff secure facility.
- The average Length of Stay (LOS) for a youth in detention is 14.7 days, a decrease of 0.6 days over last year's LOS of 15.3 days.
- The majority of youth entered detention in FY 2011-12 having a warrant or remand (45.4%), and 37.5% of youth were pre-adjudicated. The remaining youth were detained due to detention sentences (15.2%), were probation youth (1.1%), had other holds (0.7%), or were DYC committed youth held in detention for new offenses. (0.1%).

---

<sup>4</sup> Juvenile Detention Screening and Assessment Guide.

## **B. Population Characteristics**

### **1. Gender**

- Over the past three years the proportion of new admissions to detention by gender has remained fairly stable. In FY 2011-12, seventy-eight percent of new detention admissions were male and 22% were female.

### **2. Ethnicity**

- Anglo-American youth (42%) have consistently represented the largest ethnic group in DYC detention facilities, followed by Hispanic / Latino youth (40%), and African-American youth (15%). The remaining three percent of admissions are Native-American, Asian-American, and other ethnicities.
- African-American youth tend to have a higher number of prior detention admissions, when compared to other ethnic groups. On the other hand, the “Other” ethnicity group consistently has a higher percentage of youth with no previous detention admissions.

### **3. Age**

- The average age at admission in FY 2011-12 was 16.1 years, which is the same as the last five years.
- The age distribution for FY 2011-12 is similar to that of prior years as well. Eighty percent (78.5%) of new admissions to detention were between the ages of 15 and 17 at the time of admission.

### **4. Prior Admissions**

- Sixty-five percent of the youth admitted to detention in FY 2011-12 had one or more prior detention admissions. This percentage has been consistent for the past few years.

## **IV. COMMITMENT POPULATION Trends and Characteristics**

### **A. Population Trends**

- Except for LOS, the committed population experienced a decline across all categories: Commitment ADP experienced a six percent decrease; clients served decreased by twelve percent; new commitments decreased by eighteen percent; and commitment LOS inched up by 0.6%.

## **B. Population Characteristics<sup>5</sup>**

### 1. Gender

- The percentage of female new commitments decreased from last year. Fourteen percent of new commitments were female for FY 2011-12 and 86% were male. In FY 2010-11, 15% were female; and in FY 2009-10, 12% were female.
- Females represent 14% of DYC's commitment ADP, which has been consistent for the past few years.

### 2. Ethnicity

- The majority of new commitments have historically been Anglo, Hispanic/Latino, and African American youth, respectively. This holds true for FY 2011-12. This year's ethnic distribution was 43.3% Anglo, 39.2% Hispanic, 14.6% African American, and 0.8 % Native American. The remaining 2.1 percent is split between Asian American and 'other' ethnicities.

### 3. Age

- The average age at commitment has remained stable over the last four fiscal years, remaining between 16.7 (FY 2009-10) and 16.8 (FY 2010-11 and FY 2011-12) years of age.
- The majority of youth are 16 or 17 years old when committed (29% and 33%, respectively), and 18% were 15 years old. These proportions have not changed significantly in several years.

### 4. Other Characteristics

- Twenty percent of newly committed youth received mandatory sentences, which is down by 11% from last year. Mandatory sentences include repeat offenders, violent offenders and aggravated offenders as well as sentences mandated by the courts. This leaves 80% of youth with non-mandatory sentences.
- The average age at first adjudication was 14.5 years for males and 14.9 years for females.
- Sixty-eight percent of youth had one or more out-of-home placements. Thirty-five percent of males committed in FY 2011-12 had no prior out-of-home placements, while only 14% of females committed in FY 2011-12 had no prior out-of-home placements; both male and female percentages of no prior out-of-home placements are down from prior years.
- The percent of females with a history of running away was 90% in FY 2011-12; this is down 2% from last FY. The percent of males with a runaway history increased, from 67% in FY 2010-11 to 68% in FY 2011-12.

---

<sup>5</sup> Refers to youth who were newly committed during FY 2011-12, unless otherwise specified.

- The percent of newly committed youth in need of treatment level substance abuse services increased again in FY 2011-12; 70.4% of those newly committed indicated a need for treatment. A few years prior, this percent remained closer to 60%. The male population in need of treatment has increased from 68% to 70%, while the female treatment population has remained essentially constant at 73%.
- Seventy-six percent of newly committed youth had one or more prior adjudications. Fewer males have no prior adjudications (22%) than females (38%).
- Fifty-seven percent of youth were committed for felony offenses in FY 2011-12. This is consistent with the past two years, but down from 63% three years prior.
- In regard to mental health needs during FY 2011-12, the percent of newly committed youth assessed as “Requiring Formal Mental Health Intervention” was 57.4% (CCAR data). A larger percentage of females show a need for mental health intervention (64.4%) in comparison to males (56.3%).

## **V. PAROLE POPULATION AND DISCHARGES**

### **Trends and Characteristics**

- Parole ADP experienced a decrease in FY 2011-12, with an ADP of 363.0; down from 418.0 in FY 2010-11. This represents a 13.1% decrease from last year’s parole ADP.
- Parole LOS went up to 7.0 months. It has not been in the 7.0 level since FY 2004-05.
- The top three discharge placements after parole have been proportionally consistent over the past few years. This year, youth discharged to their parents (42.7%), other relatives (15.7%), or independent living situations (13.0%). These top three discharge placements account for 72% of all discharge placements. Last fiscal year, these top three placements accounted for 76% of all discharge placements.
- Twelve percent (11.8%) of youth discharged directly into Adult Jail/Corrections.
- Nearly sixty-four percent of newly discharged youth were employed and/or enrolled in school upon discharge in FY 2011-12.

## **VI. REGIONAL SUMMARY**

### **Results and Trends**

- Youth in the Western Region discharge to their parents or relatives 65% of the time; this is the highest percentage of the four regions. The Central Region is second with 60% discharging to their parents or relatives; the

Northeast and Southern Regions are similar with 57% and 56%, respectively.

- Seventy-nine percent (79.0%) of youth discharged from the Western Region are either enrolled in school or employed or both. The other three regions are substantially lower in this area. (CR 64.4%; NR 61.4%; SR 57.3%)

## **VII. RECIDIVISM**

### **Results and Trends**

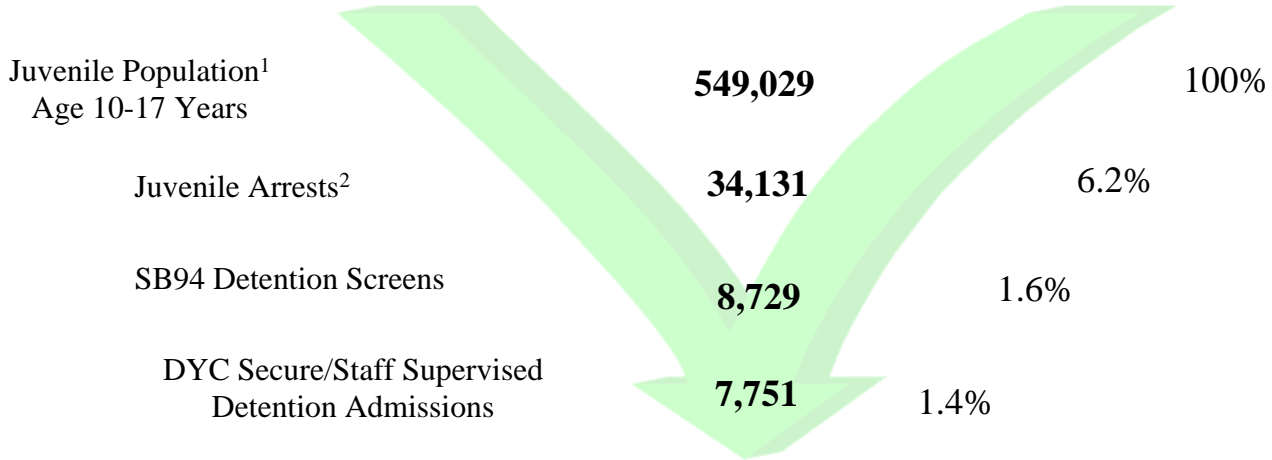
- The Pre-discharge recidivism rate for youth that discharged in FY 2010-11 was 29.8%.
- Post-discharge recidivism was 15.8% for the same cohort.
- These two rates represent a decline in both types of recidivism. While the pre-discharge rate is not significantly different from the previous cohort, the post-discharge rate is a marked and significant reduction. These are the most recent study results published by the Division in January 2013.



**COLORADO STATE TOTALS**

**Fiscal Year 2011-2012**

**Juvenile Justice Filtering Process to Detention**



	FY 2007-08	FY 2008-09	FY 2009-10	FY 2010-11	FY 2011-12
Age 10-17 population <sup>1</sup>	530,504	535,446	539,167	543,413	549,029
Juvenile Arrests <sup>2</sup>	46,376	46,395	39,876	37,699	34,131
Arrests as % of population	8.7%	8.7%	7.4%	6.9%	6.2%
SB94 Detention Screens	12,008	10,987	9,853	9,399	8,729
Detention Admissions	10,792	10,295	9,102	8,435	7,751
Admissions as % of Population	2.0%	1.9%	1.7%	1.6%	1.4%

<sup>1</sup>Colorado State Department of Local Affairs. Population data are reported for calendar years and based upon the 2000 and 2010 census.

(<http://www.dola.state.co.us/cedis.html>).

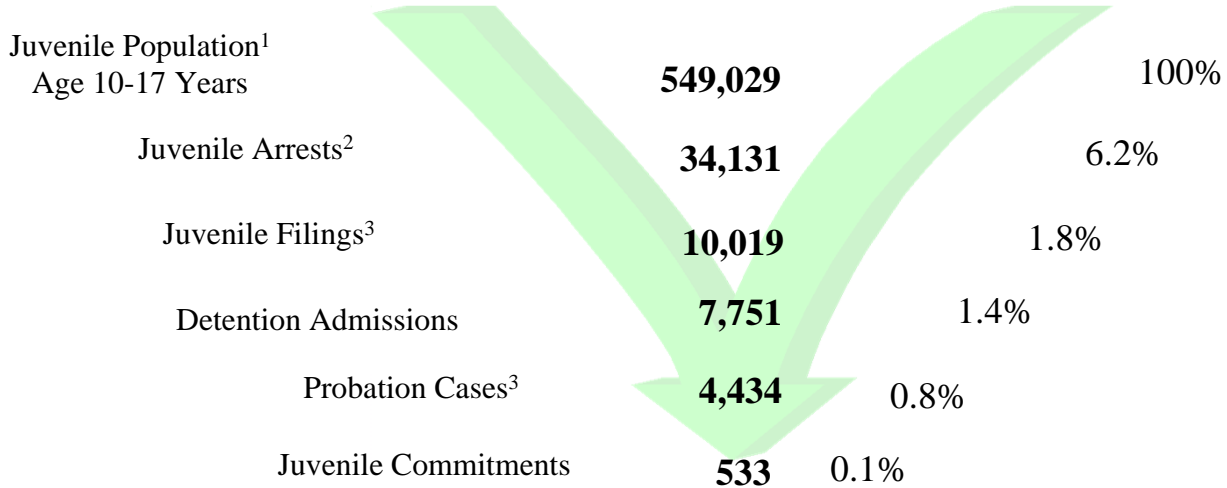
<sup>2</sup>Colorado Bureau of Investigations, *Crime in Colorado 2011*.



**COLORADO STATE TOTALS**

**Fiscal Year 2011-2012**

**Juvenile Justice Filtering Process to Commitment**



	FY 2007-08	FY 2008-09	FY 2009-10	FY 2010-11	FY 2011-12
Age 10-17 Population <sup>1</sup>	530,504	535,446	539,167	543,413	549,029
Juvenile Arrests <sup>2</sup>	46,376	46,395	39,876	37,699	34,131
Arrests as % of population	8.7%	8.7%	7.4%	6.9%	6.2%
Juvenile Delinquency Filings <sup>3</sup>	14,106	13,668	11,640	11,286	10,019
Juvenile Detention Admissions	10,792	10,295	9,102	8,435	7,751
Number of New Probation Cases (reg. & ISP) <sup>3</sup>	6,403	6,219	5,270	5,039	4,434
Number of New Commitments	795	760	743	646	533
Commitments as % of Population	0.1%	0.1%	0.1%	0.1%	0.1%

<sup>1</sup>Colorado State Department of Local Affairs. Population data are reported for calendar years. Population estimates are based upon the 2000 & 2010 census (<http://dola.colorado.gov/demog/demog.cfm>).

<sup>2</sup>Colorado Bureau of Investigations, *Crime in Colorado 2011*.

<sup>3</sup>Colorado Judicial Branch FY 2012 Annual Statistical Report (preliminary figures).

# ALL CLIENTS POPULATION DATA

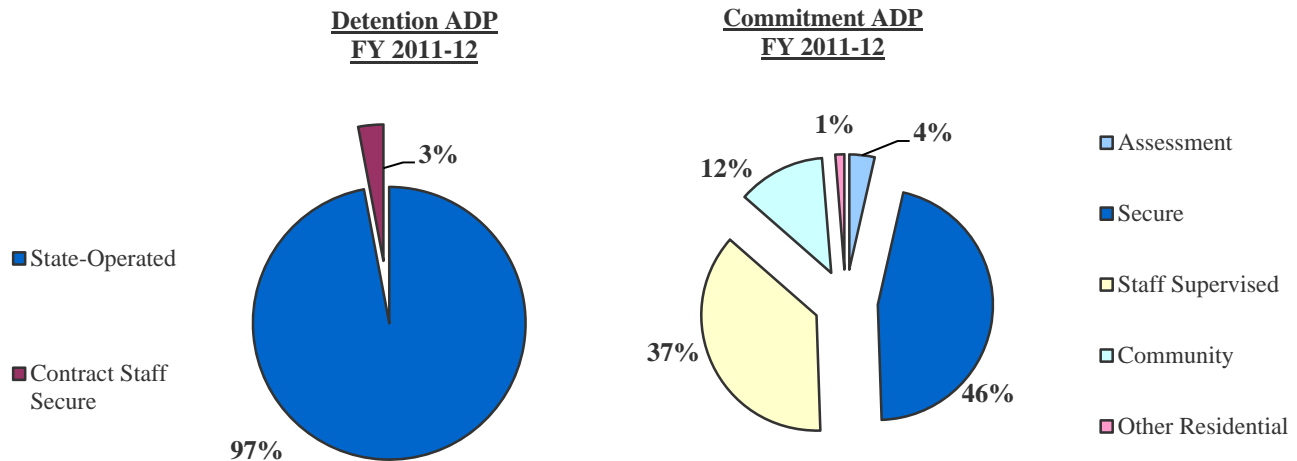
Fiscal Year 2011-2012

DETAINED YOUTH	Clients Served <sup>1</sup>	New Admits	ADP	LOS
State-Operated	4,651	7,556	307.3	14.6 days
Contract Staff Secure	139	195	9.4	17.8 days
<b>Total Detained</b>	<b>4,766</b>	<b>7,751</b>	<b>316.8</b>	<b>14.7 days</b>

COMMITTED YOUTH	Clients Served <sup>1</sup>	New Commitments	ADP	LOS
Assessment	586		35.0	0.7 month
Secure	1,280		451.4	8.4 months
Staff Supervised	797		363.5	7.0 months
Community	388		120.7	2.7 months
Other Residential <sup>2</sup>	55		12.5	0.2 month
<b>Total Residential</b>	<b>1,960</b>	<b>533</b>	<b>983.1</b>	<b>18.3 months</b>

PAROLED YOUTH	Clients Served <sup>1</sup>	New Intakes	ADP	LOS
<b>Total Paroled</b>	<b>1,056</b>	<b>617</b>	<b>363.0</b>	<b>7.0 months</b>

STATEWIDE TOTAL	Clients Served <sup>1</sup>	ADP	LOS
<b>STATEWIDE TOTAL</b>	<b>6,568</b>	<b>1,662.9</b>	<b>25.2 months</b>



<sup>1</sup>Clients Served is an unduplicated count. Categorical totals are not a sum of individual program counts and are not available for all categories.

<sup>2</sup>Other Residential includes Group Homes, Job Corps, Hospitalizations, Shelter Care, etc.

NOTE: Throughout the Reference Manual, category sums may vary slightly from given totals due to rounding differences.



# DETENTION POPULATION TRENDS

## 10 Year Detention Trends

Fiscal Year	Clients Served <sup>1</sup>	Percentage Change +/-	New Admits	Percentage Change +/-	ADP <sup>2</sup>	Percentage Change +/-	LOS (Days)	Percentage Change +/-
2002-03	8,242	-7.6%	14,059	-13.8%	497.1	-8.8%	15.3	-2.5%
2003-04	7,290	-11.6%	11,148	-20.7%	396.2	-20.3%	12.8	-16.3%
2004-05	7,252	-0.5%	10,970	-1.6%	402.0	1.5%	13.1	2.3%
2005-06	7,215	-0.5%	10,698	-2.5%	426.3	6.0%	14.1	7.6%
2006-07	7,195	-0.3%	10,591	-1.0%	414.9	-2.7%	14.0	-0.7%
2007-08	6,589	-8.4%	10,792	1.9%	408.8	-1.5%	13.7	-2.1%
2008-09	6,409	-2.7%	10,295	-4.6%	398.7	-2.5%	13.9	1.4%
2009-10	5,765	-10.0%	9,102	-11.6%	363.1	-8.9%	14.2	2.0%
2010-11	5,226	-9.3%	8,435	-7.3%	352.6	-2.9%	15.3	8.0%
2011-12	4,766	-8.8%	7,751	-8.1%	316.8	-10.2%	14.7	-4.2%

Fiscal Year 2011-12 was the first full year of detention operation under the legislative, statewide cap of 422 youth. The detention population (ADP) decreased 10.2% from the previous year. Ninety-seven percent (97.0%) of detained youth were held in State-Operated facilities. Since the original detention cap of 479 was implemented, there has been a decreased reliance on Privately-Operated placements. Only three percent of this year's ADP was detained in a contracted secure or staff-secure facility. The average length of stay (LOS) for a youth in detention decreased from 15.3 to 14.7 days, but previously lingered around 14 days. The number of clients served decreased by 8.8%, and the number of new detention admissions decreased this year by 8.1%, making it a 24-year low. Juvenile corrections as a whole, and across the nation, is experiencing a marked decline in population levels.

The initial decrease in detention admissions was anticipated following the statewide capping legislation (19-2-1201 C.R.S.) in FY 2003-04, which established a juvenile detention bed cap of 479 statewide that forced a marked change in the composition of youth held in detention facilities. Juvenile justice agencies were required to re-evaluate their utilization of this limited resource. Instead of viewing detention beds as an at-will resource, juvenile justice agencies adopted the policy shift of reserving the most secure component of the detention continuum for those youth who present the greatest risk to public safety.

In an environment of declining populations and uncertain economic times, the Division has recently recommended that the statewide cap be reduced once again, from 422 to 382. This legislation is forthcoming, but it is anticipated that a new and reduced statewide detention cap will be implemented on or before July 1, 2013.

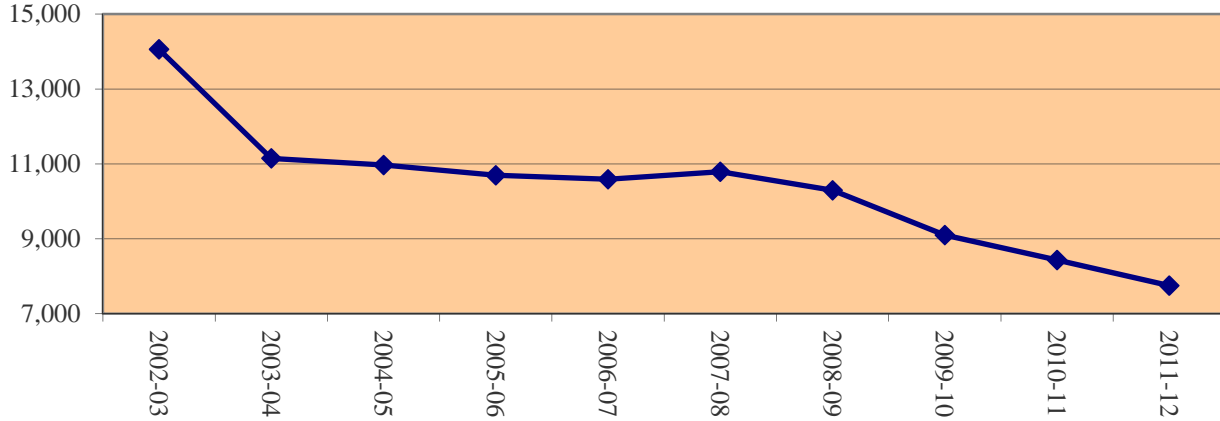
<sup>1</sup>Clients served counts are unduplicated.

<sup>2</sup>The detention ADP includes youth in the Boot Camp/CAP program during FY 1996-97 through FY 2002-03.

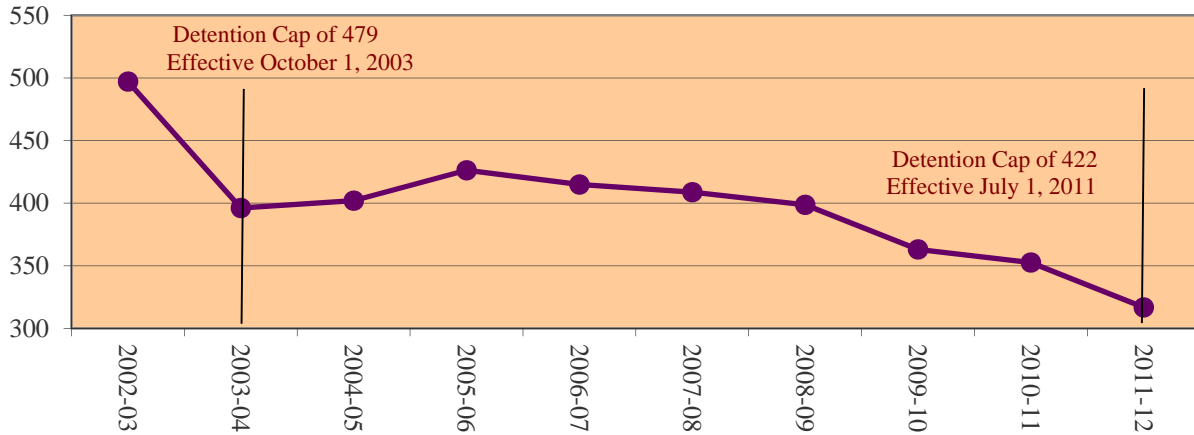
# DETENTION POPULATION TRENDS

FY 2002-03 Through FY 2011-12

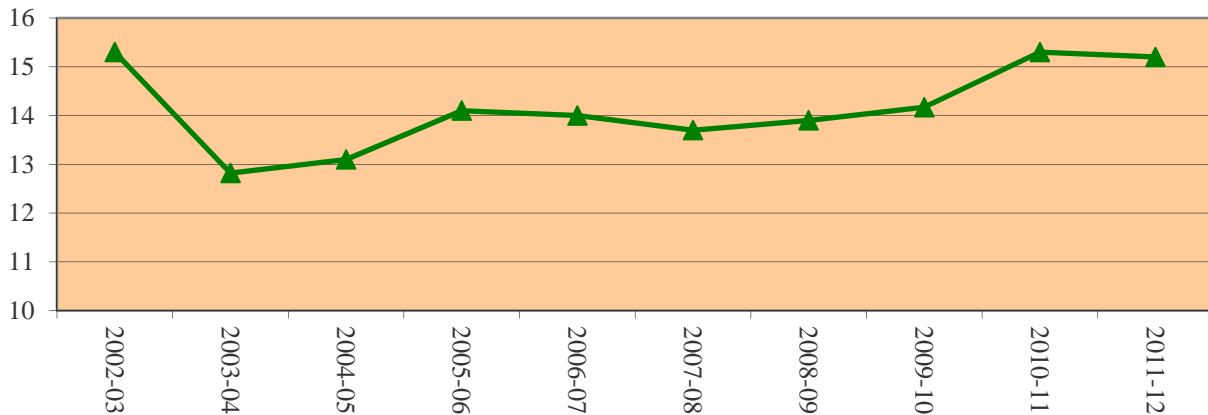
### Trends in Detention Admissions



### Trends in Detention ADP



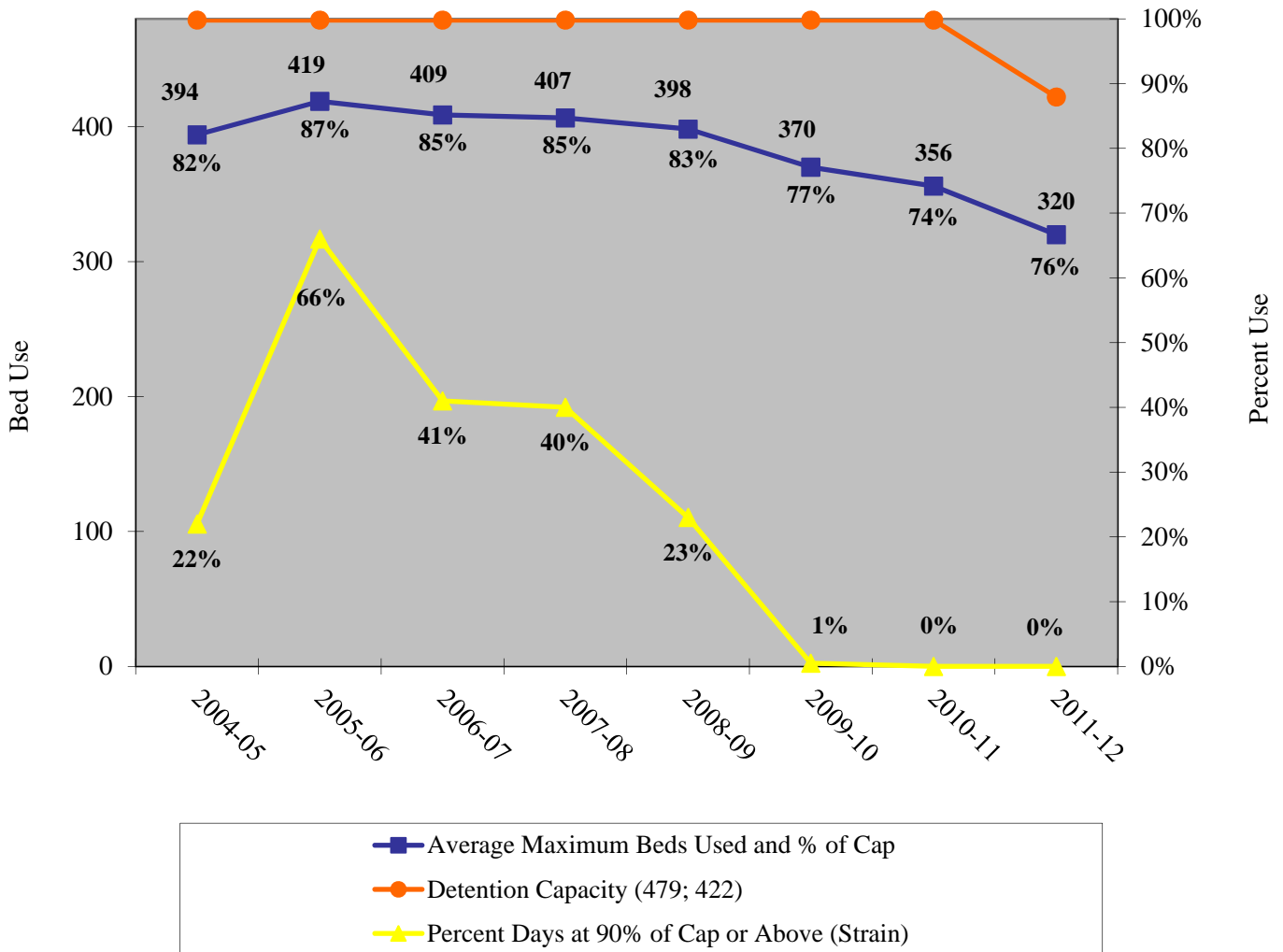
### Trends in Detention LOS (Days)



# DETENTION POPULATION TRENDS

FY 2004-05 Through FY 2011-12

## AVERAGE MAXIMUM BED USAGE AND CAPACITY STRAIN TRENDS



Maximum Bed Usage represents the maximum number of youth in detention at any given point during the day. The graph above illustrates that in FY 2011-12, on average, the state was operating at a maximum daily count of 320 youth, or 76% of the 422 limited capacity. In FY 2005-06 this figure reached 91% of capacity with an average maximum of 434.6 youth in detention on any given day (with a capacity of 479).

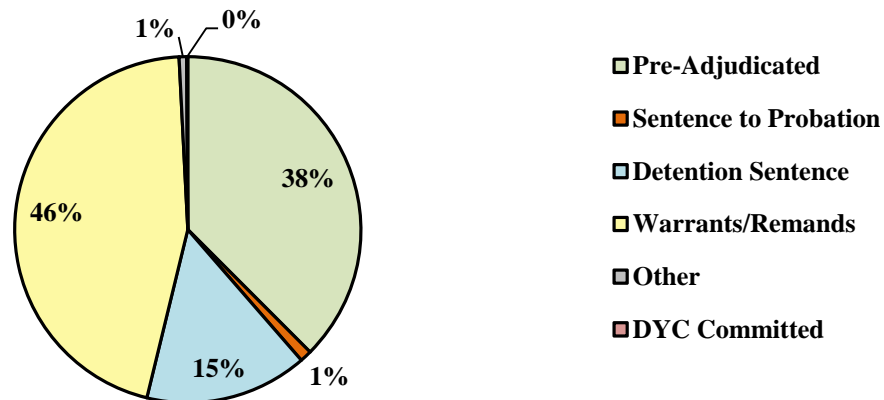
The percent of days when maximum beds used was at or above 90% of the statewide capacity is used as a measure of statewide capacity "strain" involved in managing the daily use of detention beds. In FY 2011-12, the DYC operated at 90% of capacity (or above) zero percent of the time. This represents the sixth year of declining strain, after peaking 6 years prior in FY 2005-06, when the Division operated at or above 90% of the 479 capacity 66% of the time.

# DETENTION REASON DETAINED OVERVIEW

FY 2010-11 Through FY 2011-12\*

	2010-11	2011-12
<b>1) Pre-Adjudicated</b>	<b>37.7 %</b>	<b>37.5 %</b>
Felony	23.2 %	23.5 %
Misdemeanor	14.5 %	14.0 %
<b>2) Sentence to Probation</b>	<b>1.9 %</b>	<b>1.1 %</b>
Technical Violator	1.1 %	0.8 %
New Charges	0.8 %	0.3 %
<b>3) Detention Sentence</b>	<b>13.8 %</b>	<b>15.2 %</b>
Probation Sentence	1.0 %	1.6 %
Detention Sentence	8.9 %	10.4 %
Valid Court Order (VCO) Truancy	3.9 %	3.1 %
Awaiting DSS (Social Services) Placement	0.0 %	0.1 %
<b>4) Warrants/Remands</b>	<b>45.9 %</b>	<b>45.4 %</b>
Failure To Appear (FTA)	10.2 %	9.2 %
Failure To Comply (FTC)	35.7 %	36.2 %
<b>5) Other</b>	<b>0.5 %</b>	<b>0.7 %</b>
Interstate Compact on Juveniles (ICJ) Hold	0.1 %	0.1 %
Immigration Hold	0.0 %	0.0 %
No Bond Hold	0.3 %	0.4 %
Out-of-County Warrant	0.1 %	0.2 %
<b>6) DYC Committed</b>	<b>0.2 %</b>	<b>0.1 %</b>
Institutional	0.1 %	0.0 %
Parole	0.1 %	0.1 %

**FY 2011-12**



\*Based on New Detention Admissions.

**DETENTION POPULATION  
BY PROGRAM**

**Fiscal Year 2011-2012**

	Clients Served <sup>1</sup>	New Admits	ADP	LOS (Days)
<i>State Operated</i>				
Adams YSC	391	554	19.1	12.7
Gilliam YSC	801	1,105	55.2	18.5
Grand Mesa YSC	260	388	20.5	20.4
Marvin W. Foote YSC	922	1,303	57.1	16.3
Mount View YSC	666	895	33.2	13.8
Platte Valley YSC	878	1,556	55.5	13.3
Pueblo YSC	431	584	18.2	11.7
Spring Creek YSC	803	1,171	48.6	15.2
<i>Subtotal State Operated</i>	<i>4,651</i>	<i>7,556</i>	<i>307.3</i>	<i>14.6</i>
<i>Privately Operated</i>				
Brown Center	14	17	0.8	17.3
Robert DeNier	82	117	5.6	18.2
Youthtrack Alamosa (SLV <sup>2</sup> )	43	61	3.0	17.6
<i>Subtotal Privately Operated</i>	<i>139</i>	<i>195</i>	<i>9.4</i>	<i>17.8</i>
<b>STATEWIDE TOTAL</b>	<b>4,766</b>	<b>7,751</b>	<b>316.8</b>	<b>14.7</b>

<sup>1</sup> Clients Served is an unduplicated count. Categorical totals are not a sum of individual program Clients Served.

<sup>2</sup> San Luis Valley.



# DETENTION POPULATION TRENDS

## ADP BY PROGRAM

	FY 2007-08	FY 2008-09	FY 2009-10	FY 2010-11	FY 2011-12
<i>State Operated</i>					
Adams YSC	25.8	23.5	22.3	20.9	19.1
Gilliam YSC	69.2	67.1	58.5	63.7	55.2
Grand Mesa YSC	18.8	19.3	20.4	20.2	20.5
Marvin Foote YSC	84.2	81.2	75.0	67.4	57.1
Mount View YSC	46.3	46.5	37.6	38.8	33.2
Platte Valley YSC	63.2	62.8	60.2	55.4	55.5
Pueblo YSC	34.0	30.3	27.7	25.5	18.2
Spring Creek YSC	45.6	46.0	44.9	45.8	48.6
<i>Subtotal State Operated</i>	<i>387.2</i>	<i>376.7</i>	<i>346.6</i>	<i>337.5</i>	<i>307.3</i>
<i>Privately Operated</i>					
Brown Center	1.3	1.5	1.1	1.4	0.8
Hilltop Youth Services	2.8	4.2	0.0	0.0	0.0
Prowers	0.1	0.0	0.0	0.0	0.0
Robert DeNier	7.8	7.9	6.4	5.9	5.6
Youthtrack Alamosa (SLV <sup>1</sup> )	3.7	3.0	3.5	3.2	3.0
<i>Subtotal Privately Operated</i>	<i>21.7</i>	<i>22.0</i>	<i>16.6</i>	<i>15.1</i>	<i>9.4</i>
<b>STATEWIDE DETENTION</b>	<b>408.8</b>	<b>398.7</b>	<b>363.1</b>	<b>352.6</b>	<b>316.8</b>

<sup>1</sup> San Luis Valley.

# DETENTION POPULATION

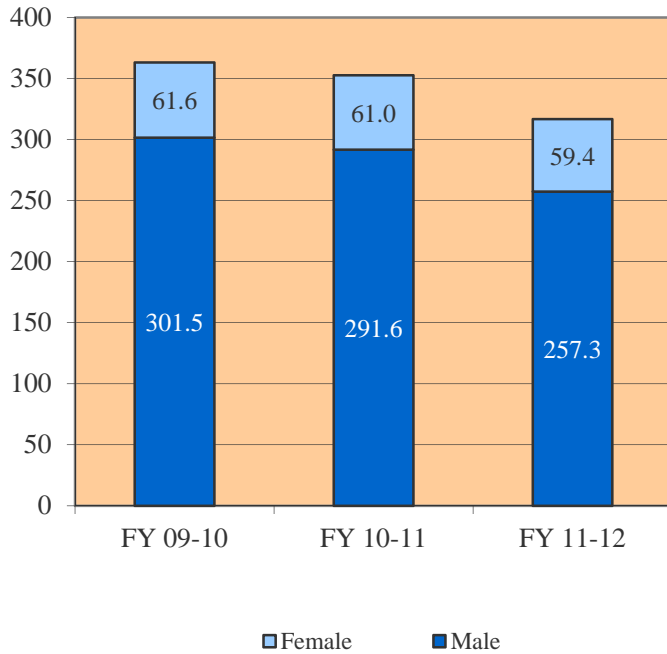
## DEMOGRAPHIC TRENDS

	FY 2009-10				FY 2010-11				FY 2011-12			
	New Admits	%	ADP	LOS (days)	New Admits	%	ADP	LOS (days)	New Admits	%	ADP	LOS (days)
<b>GENDER</b>												
Male	7,177	78.9%	301.5	14.9	6,590	78.1%	291.6	16.2	6,017	77.6%	257.3	15.3
Female	1,925	21.1%	61.6	11.5	1,845	21.9%	61.0	12.0	1,734	22.4%	59.4	12.4
<b>TOTAL</b>	<b>9,102</b>	<b>100%</b>	<b>363.1</b>	<b>14.2</b>	<b>8,435</b>	<b>100%</b>	<b>352.6</b>	<b>15.3</b>	<b>7,751</b>	<b>100%</b>	<b>316.8</b>	<b>14.7</b>
<b>ETHNICITY</b>												
Anglo-American	3,824	42.0%	140.9	13.2	3,551	42.1%	136.9	13.9	3,242	41.8%	121.6	13.5
African-American	1,373	15.1%	66.3	17.4	1,326	15.7%	64.2	18.3	1,148	14.8%	57.6	17.7
Hispanic/Latino	3,550	39.0%	142.1	13.9	3,257	38.6%	140.3	15.8	3,116	40.2%	127.8	14.7
Native American	121	1.3%	5.7	17.2	114	1.4%	3.9	12.6	98	1.3%	4.0	14.6
Asian-American	91	1.0%	3.3	12.7	81	1.0%	3.2	14.6	51	0.7%	1.9	12.9
Other	143	1.6%	4.8	12.0	106	1.3%	4.1	13.5	96	1.2%	3.8	14.8
<b>AGE</b>												
10 Years	14	0.2%	0.1	3.2	19	0.2%	0.2	3.8	12	0.2%	0.2	7.2
11 Years	37	0.4%	0.6	5.6	64	0.8%	1.8	9.3	64	0.8%	1.9	11.4
12 Years	203	2.2%	6.1	10.8	207	2.5%	7.5	12.4	204	2.6%	6.6	12.0
13 Years	467	5.1%	18.3	14.4	445	5.3%	17.5	15.1	468	6.0%	18.5	14.1
14 Years	1,038	11.4%	41.2	14.0	959	11.4%	38.0	14.4	917	11.8%	36.5	14.3
15 Years	1,966	21.6%	75.5	13.8	1,856	22.0%	74.7	15.1	1,641	21.2%	67.1	14.2
16 Years	2,702	29.7%	114.4	14.7	2,391	28.3%	108.8	16.5	2,180	28.1%	93.4	15.5
17 Years	2,673	29.4%	106.9	14.4	2,483	29.4%	104.0	15.2	2,260	29.2%	92.4	14.9
18 Years	1	0.0%	0.0	1.5	10	0.1%	0.1	4.3	4	0.1%	0.0	0.8
19 Years +	1	0.0%	0.0	10.1	1	0.0%	0.1	20.9	1	0.0%	0.0	0.7
Average Age at Admission				16.1 Years				16.1 Years				16.1 Years
<b>Prior Admissions</b>												
None	3,269	35.9%	95.6	10.4	3,035	36.0%	87.2	10.4	2,707	34.9%	79.2	10.6
One	1,849	20.3%	68.9	13.4	1,689	20.0%	71.4	15.3	1,545	19.9%	57.2	13.5
Two or more	3,984	43.8%	198.6	17.6	3,711	44.0%	194.0	19.4	3,499	45.1%	180.3	18.4
<b>Program Type</b>												
State Operated	8,650	95.0%	346.5	14.2	8,080	95.8%	337.5	15.3	7,556	97.5%	307.3	14.6
Privately Operated	452	5.0%	16.6	13.1	355	4.2%	15.1	15.6	195	2.5%	9.4	17.8

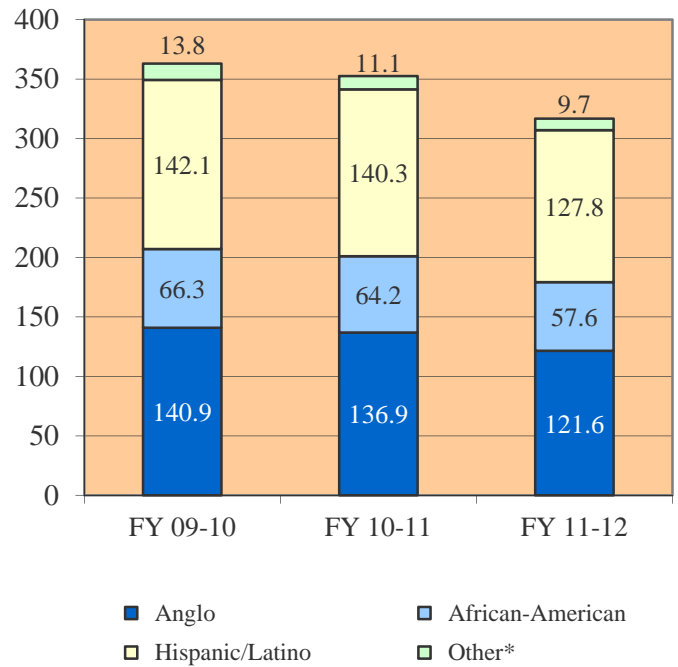
# DETENTION POPULATION

## DEMOGRAPHIC TRENDS

### Detention ADP by Gender

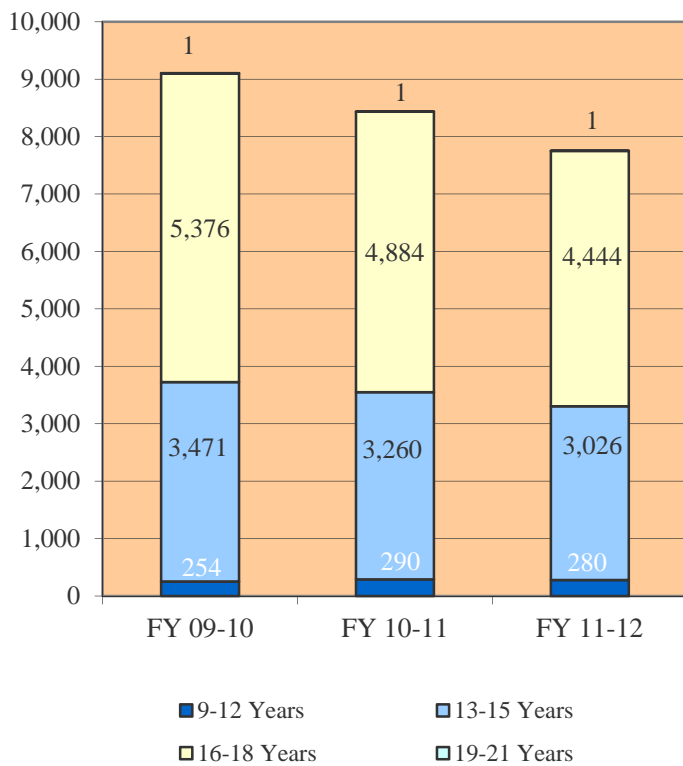


### Detention ADP by Ethnicity

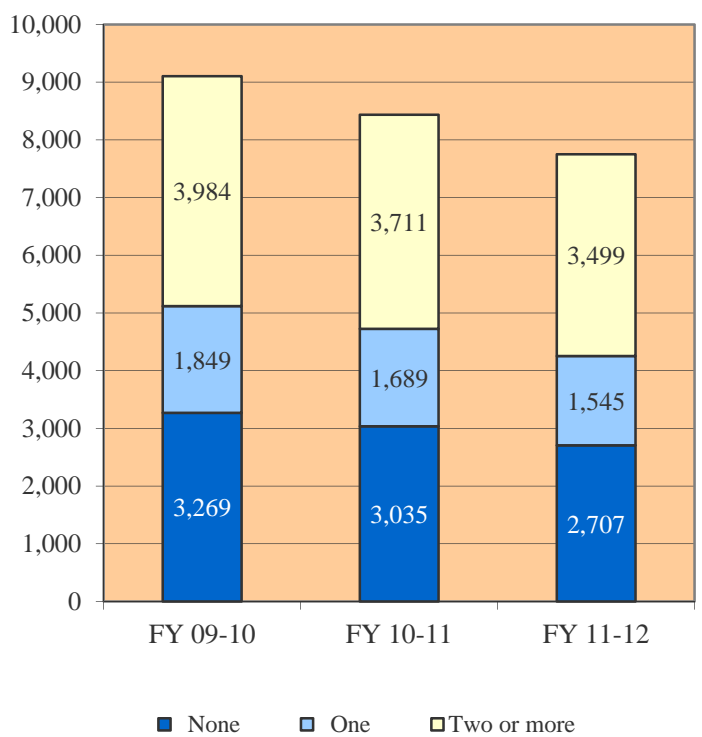


\*Other includes Native American, Asian American, etc.

### Detention Admissions by Age at Admission



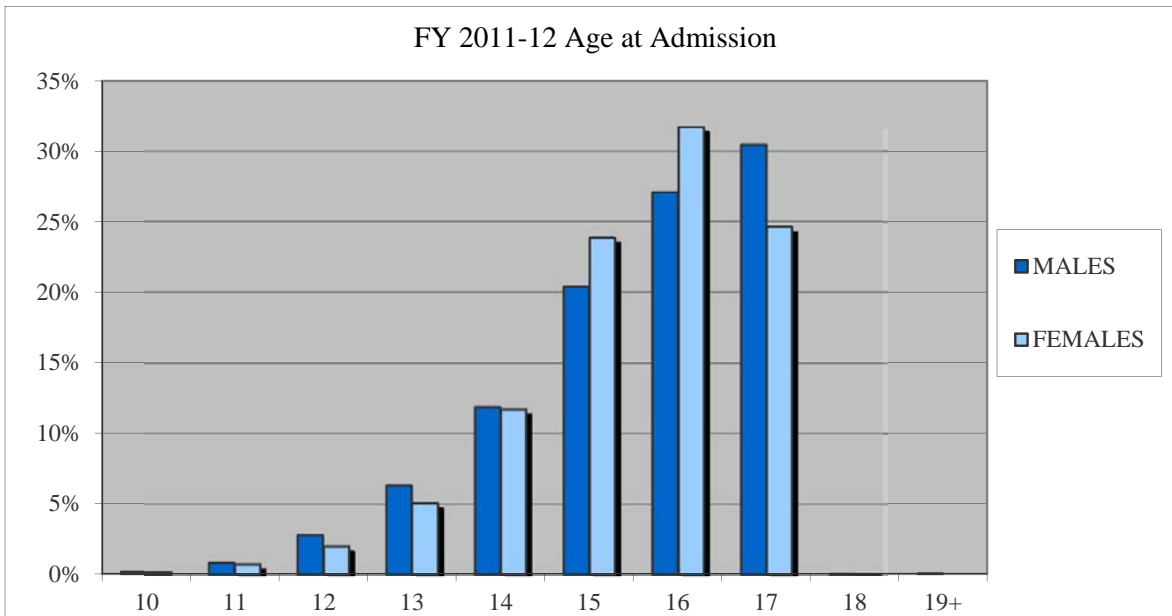
### Detention Admissions by Number of Prior Admissions



# DETENTION ADMISSIONS

## DEMOGRAPHIC TRENDS BY GENDER

	MALES						FEMALES					
	FY 2009-10		FY 2010-11		FY 2011-12		FY 2009-10		FY 2010-11		FY 2011-12	
	N	%	N	%	N	%	N	%	N	%	N	%
<b>DEMOGRAPHIC DATA</b>												
<b>Ethnicity</b>												
Anglo-American	2,957	41.2%	2,701	41.0%	2,430	40.4%	867	45.0%	850	46.1%	812	46.8%
African-American	1,082	15.1%	1,028	15.6%	907	15.1%	291	15.1%	298	16.2%	241	13.9%
Hispanic/Latino	2,884	40.2%	2,619	39.7%	2,486	41.3%	666	34.6%	638	34.6%	630	36.3%
Native American	90	1.3%	86	1.3%	75	1.2%	31	1.6%	28	1.5%	23	1.3%
Asian-American	70	1.0%	69	1.0%	42	0.7%	21	1.1%	12	0.7%	9	0.5%
Other	94	1.3%	87	1.3%	77	1.3%	49	2.5%	19	1.0%	19	1.1%
<b>TOTAL NEW ADMISSIONS</b>	<b>7,177</b>	<b>100%</b>	<b>6,590</b>	<b>100.0%</b>	<b>6,017</b>	<b>100.0%</b>	<b>1,925</b>	<b>100%</b>	<b>1,845</b>	<b>100.0%</b>	<b>1,734</b>	<b>100.0%</b>
<b>Age at Admission</b>												
10 Years	13	0.2%	17	0.3%	9	0.1%	1	0.1%	2	0.1%	3	0.2%
11 Years	28	0.4%	58	0.9%	51	0.8%	9	0.5%	6	0.3%	13	0.7%
12 Years	158	2.2%	164	2.5%	169	2.8%	45	2.3%	43	2.3%	35	2.0%
13 Years	376	5.2%	357	5.4%	380	6.3%	91	4.7%	88	4.8%	88	5.1%
14 Years	835	11.6%	726	11.0%	714	11.9%	203	10.5%	233	12.6%	203	11.7%
15 Years	1,498	20.9%	1,435	21.8%	1,227	20.4%	468	24.3%	421	22.8%	414	23.9%
16 Years	2,087	29.1%	1,877	28.5%	1,630	27.1%	615	31.9%	514	27.9%	550	31.7%
17 Years	2,180	30.4%	1,951	29.6%	1,833	30.5%	493	25.6%	532	28.8%	427	24.6%
18 Years	1	0.0%	4	0.1%	3	0.0%	0	0.0%	6	0.3%	1	0.1%
19 Years +	1	0.0%	1	0.0%	1	0.0%	0	0.0%	0	0.0%	0	0.0%
Average Age at Admission	16.1 Years		16.1 Years		16.0 Years		16.1 Years		16.1 Years		16.0 Years	
<b>Prior Admissions</b>												
None	2,443	34.0%	2,281	34.6%	2,015	33.5%	826	42.9%	754	40.9%	692	39.9%
One	1,448	20.2%	1,297	19.7%	1,178	19.6%	401	20.8%	392	21.2%	367	21.2%
Two or more	3,286	45.8%	3,012	45.7%	2,824	46.9%	698	36.3%	699	37.9%	675	38.9%



**DETENTION POPULATION**

**DEMOGRAPHIC TRENDS BY ETHNICITY**

			Age at Admission										TOTAL NEW	Average Age
			10	11	12	13	14	15	16	17	18	19+	ADMISSIONS	
<b>Ethnicity</b>														
Anglo-American	FY 11-12	N	5	31	69	177	352	697	941	970	0	0	3,242	16.1
		%	0.2%	1.0%	2.1%	5.5%	10.9%	21.5%	29.0%	29.9%	0.0%	0.0%	100.0%	
	FY 10-11	N	10	34	99	168	403	773	985	1,075	3	1	3,551	16.1
		%	0.3%	1.0%	2.8%	4.7%	11.3%	21.8%	27.7%	30.3%	0.1%	0.0%	100.0%	
	FY 09-10	N	8	14	74	169	431	870	1,164	1,094	0	0	3,824	16.1
		%	0.2%	0.4%	1.9%	4.4%	11.3%	22.8%	30.4%	28.6%	0.0%	0.0%	100.0%	
African-American	FY 11-12	N	1	8	35	87	116	250	314	336	1	0	1,148	16.0
		%	0.1%	0.7%	3.0%	7.6%	10.1%	21.8%	27.4%	29.3%	0.1%	0.0%	100.0%	
	FY 10-11	N	2	7	33	84	128	300	406	364	2	0	1,326	16.0
		%	0.2%	0.5%	2.5%	6.3%	9.7%	22.6%	30.6%	27.5%	0.2%	0.0%	100.0%	
	FY 09-10	N	2	10	49	91	179	281	376	385	0	0	1,373	16.0
		%	0.1%	0.7%	3.6%	6.6%	13.0%	20.5%	27.4%	28.0%	0.0%	0.0%	100.0%	
Hispanic/Latino	FY 11-12	N	4	24	90	197	427	648	845	877	3	1	3,116	16.0
		%	0.1%	0.8%	2.9%	6.3%	13.7%	20.8%	27.1%	28.1%	0.1%	0.0%	100.0%	
	FY 10-11	N	7	23	71	178	397	705	925	946	5	0	3,257	16.1
		%	0.2%	0.7%	2.2%	5.5%	12.2%	21.6%	28.4%	29.0%	0.2%	0.0%	100.0%	
	FY 09-10	N	4	13	67	183	391	735	1,081	1,075	1	0	3,550	16.1
		%	0.1%	0.4%	1.9%	5.2%	11.0%	20.7%	30.5%	30.3%	0.0%	0.0%	100.0%	
Native American	FY 11-12	N	1	2	3	9	17	35	31	0	0	0	98	16.2
		%	1.0%	2.0%	3.1%	9.2%	17.3%	35.7%	31.6%	0.0%	0.0%	0.0%	100.0%	
	FY 10-11	N	0	0	1	5	12	33	28	35	0	0	114	16.2
		%	0.0%	0.0%	0.9%	4.4%	10.5%	28.9%	24.6%	30.7%	0.0%	0.0%	100.0%	
	FY 09-10	N	0	0	5	7	14	19	21	55	0	0	121	16.3
		%	0.0%	0.0%	4.1%	5.8%	11.6%	15.7%	17.4%	45.5%	0.0%	0.0%	100.0%	
Asian-American	FY 11-12	N	0	0	4	2	7	8	13	17	0	0	51	16.0
		%	0.0%	0.0%	7.8%	3.9%	13.7%	15.7%	25.5%	33.3%	0.0%	0.0%	100.0%	
	FY 10-11	N	0	0	2	4	6	18	22	29	0	0	81	16.3
		%	0.0%	0.0%	2.5%	4.9%	7.4%	22.2%	27.2%	35.8%	0.0%	0.0%	100.0%	
	FY 09-10	N	0	0	2	10	7	26	26	20	0	0	91	15.9
		%	0.0%	0.0%	2.2%	11.0%	7.7%	28.6%	28.6%	22.0%	0.0%	0.0%	100.0%	
Other	FY 11-12	N	1	1	4	2	6	21	32	29	0	0	96	16.1
		%	1.0%	1.0%	4.2%	2.1%	6.3%	21.9%	33.3%	30.2%	0.0%	0.0%	100.0%	
	FY 10-11	N	0	0	1	6	13	27	25	34	0	0	106	16.2
		%	0.0%	0.0%	0.9%	5.7%	12.3%	25.5%	23.6%	32.1%	0.0%	0.0%	100.0%	
	FY 09-10	N	0	0	6	7	16	35	34	44	0	1	143	16.1
		%	0.0%	0.0%	4.2%	4.9%	11.2%	24.5%	23.8%	30.8%	0.0%	0.7%	100.0%	

# DETENTION POPULATION

## DEMOGRAPHIC TRENDS BY ETHNICITY

			Prior Admissions			TOTAL NEW ADMISSIONS
			None	One	Two or More	
Ethnicity						
Anglo-American	FY 11-12	N	1,241	640	1,361	3,242
		%	38.3%	19.7%	42.0%	100.0%
	FY 10-11	N	1,341	688	1,522	3,551
		%	37.8%	19.4%	42.9%	100.0%
	FY 09-10	N	1,427	790	1,607	3,824
		%	37.3%	20.7%	42.0%	100.0%
African-American	FY 11-12	N	346	217	585	1,148
		%	30.1%	18.9%	51.0%	100.0%
	FY 10-11	N	396	262	668	1,326
		%	29.9%	19.8%	50.4%	100.0%
	FY 09-10	N	422	265	686	1,373
		%	30.7%	19.3%	50.0%	100.0%
Hispanic/Latino	FY 11-12	N	1,021	632	1,463	3,116
		%	32.8%	20.3%	47.0%	100.0%
	FY 10-11	N	1,183	668	1,406	3,257
		%	36.3%	20.5%	43.2%	100.0%
	FY 09-10	N	1,278	722	1,550	3,550
		%	36.0%	20.3%	43.7%	100.0%
Native American	FY 11-12	N	38	17	43	98
		%	38.8%	17.3%	43.9%	100.0%
	FY 10-11	N	45	27	42	114
		%	39.5%	23.7%	36.8%	100.0%
	FY 09-10	N	43	25	53	121
		%	35.5%	20.7%	43.8%	100.0%
Asian-American	FY 11-12	N	23	16	12	51
		%	45.1%	31.4%	23.5%	100.0%
	FY 10-11	N	23	17	41	81
		%	28.4%	21.0%	50.6%	100.0%
	FY 09-10	N	38	17	36	91
		%	41.8%	18.7%	39.6%	100.0%
Other	FY 11-12	N	38	23	35	96
		%	39.6%	24.0%	36.5%	100.0%
	FY 10-11	N	47	27	32	106
		%	44.3%	25.5%	30.2%	100.0%
	FY 09-10	N	61	30	52	143
		%	42.7%	21.0%	36.4%	100.0%

**DETENTION POPULATION OVERVIEW**  
**BY REGION & JUDICIAL DISTRICT**

Region	JD	NEW ADMISSIONS	PERCENT OF YOUTH HIGH RISK (CJRA) <sup>1</sup>	ADP	LOS (days)
<b>Central</b>					
	1st	833	22.1%	30.8	12.8
	2nd	1,124	46.9%	53.9	17.0
	5th	53	8.9%	1.8	11.6
	18th	1,140	29.0%	51.4	15.4
<b>Central Total</b>		<b>3,150</b>	<b>33.5%</b>	<b>137.9</b>	<b>15.2</b>
<b>Northeast</b>					
	8th	451	44.4%	16.8	12.4
	13th	111	44.6%	4.8	13.7
	17th	695	27.0%	24.2	12.2
	19th	555	21.1%	24.0	15.8
	20th	442	45.9%	9.8	7.7
<b>Northeast Total</b>		<b>2,254</b>	<b>33.5%</b>	<b>79.6</b>	<b>12.3</b>
<b>Southern</b>					
	3rd	36	30.8%	1.5	16.4
	4th	973	22.7%	42.5	14.9
	10th	435	25.9%	10.5	8.6
	11th	208	51.7%	6.4	9.9
	12th	71	27.5%	3.6	16.9
	15th	47	36.0%	3.0	22.1
	16th	56	43.1%	2.6	13.6
<b>Southern Total</b>		<b>1,826</b>	<b>28.3%</b>	<b>70.0</b>	<b>13.1</b>
<b>Western</b>					
	6th	77	36.7%	4.1	19.8
	7th	79	53.6%	4.3	16.0
	9th	79	52.6%	5.0	21.0
	14th	11	66.7%	0.9	26.0
	21st	235	31.4%	11.1	16.8
	22nd	40	80.0%	1.5	14.9
<b>Western Total</b>		<b>521</b>	<b>42.9%</b>	<b>26.9</b>	<b>17.8</b>
Other <sup>2</sup>				2.4	
<b>Statewide Total</b>		<b>7,751</b>	<b>32.9%</b>	<b>316.8</b>	<b>14.7</b>

<sup>1</sup>High risk for recidivism on the Colorado Juvenile Risk Assessment (CJRA) Pre-Screen instrument; excludes missing data (missing = 12.1% statewide).

<sup>2</sup>DYC measures ADP by judicial district based on a maximum of three reasons detained per client. The "other" ADP comes from clients who exceed three reasons detained.

# COMMITMENT POPULATION TRENDS

## 10 Year Commitment Trends

Fiscal Year	Clients Served <sup>1</sup>	Percentage Change +/-	New Commits	Percentage Change +/-	Commitment ADP <sup>2</sup>	Percentage Change +/-	LOS (Months)	Percent Change +/-
2002-03	2,689	-2.1%	824	-2.3%	1,327.8	4.8%	19.5	10.2%
2003-04	2,840	5.6%	924	12.1%	1,385.8	4.4%	18.9	-3.1%
2004-05	2,974	4.7%	950	2.8%	1,453.5	4.9%	18.8	-0.5%
2005-06	3,233	8.7%	933	-1.8%	1,453.4	0.0%	18.2	-3.2%
2006-07	3,149	-2.6%	827	-11.4%	1,424.9	-2.0%	19	4.4%
2007-08	2,700	-14.3%	795	-3.9%	1,287.9	-9.6%	18.5	-2.6%
2008-09	2,513	-6.9%	760	-4.4%	1,229.2	-4.6%	19.0	2.6%
2009-10	2,404	-4.3%	743	-2.2%	1,171.6	-4.7%	18.9	-0.4%
2010-11	2,215	-7.9%	646	-13.1%	1,041.3	-11.1%	18.2	-3.8%
2011-12	1,960	-11.5%	533	-17.5%	983.1	-5.6%	18.3	0.6%

During FY 2011-12, the committed population experienced declines in most areas. Commitment ADP decreased by 6% to an ADP of 983.1. The number of clients served decreased by 12%, the sixth consecutive year of decrease in youth served. New Commitments also went down in FY 2011-12, with a decline of almost 18% to 533. This is the lowest number of new commitments in 17 years, or since FY 1994-95, when there were 606 new commitments. Commitment length of service (LOS) increased slightly by 0.6%, moving from 18.2 months in FY 2010-11 to 18.3 months in FY 2011-12.

Population projections released by Legislative Council Staff (in December 2012) estimate that DYC commitment levels will continue to decline over the next three fiscal years, reaching the 779 ADP mark by FY 2014-15. Population projections released by the Division of Criminal Justice (in January 2013) also estimate that DYC commitment levels will decline, but at a faster rate, reaching the 710 mark by the end of FY 2014-15.

<sup>1</sup>Clients Served is an unduplicated count.

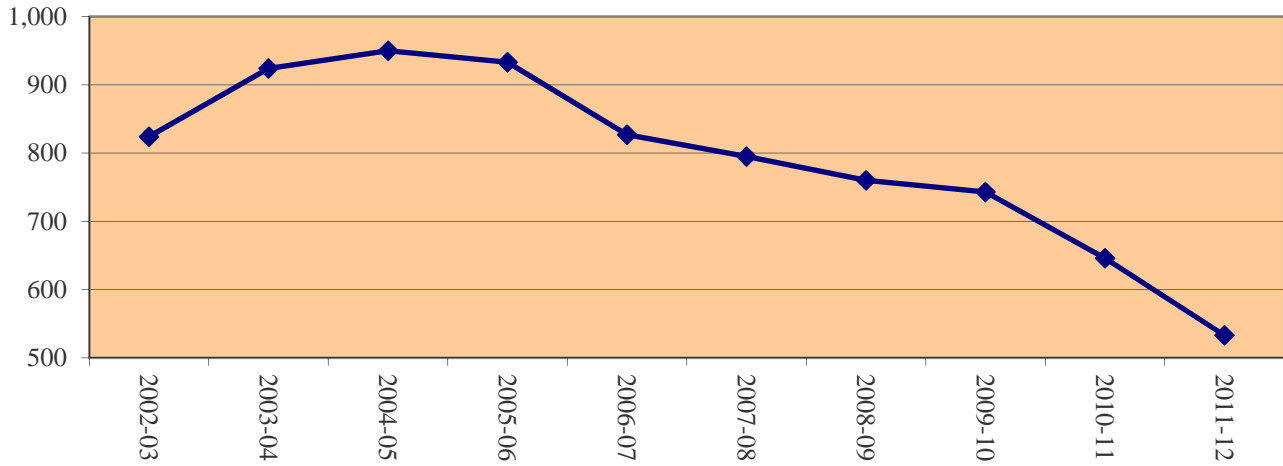
<sup>2</sup>Commitment ADP includes secure, staff-supervised, and community based residential treatment programs.



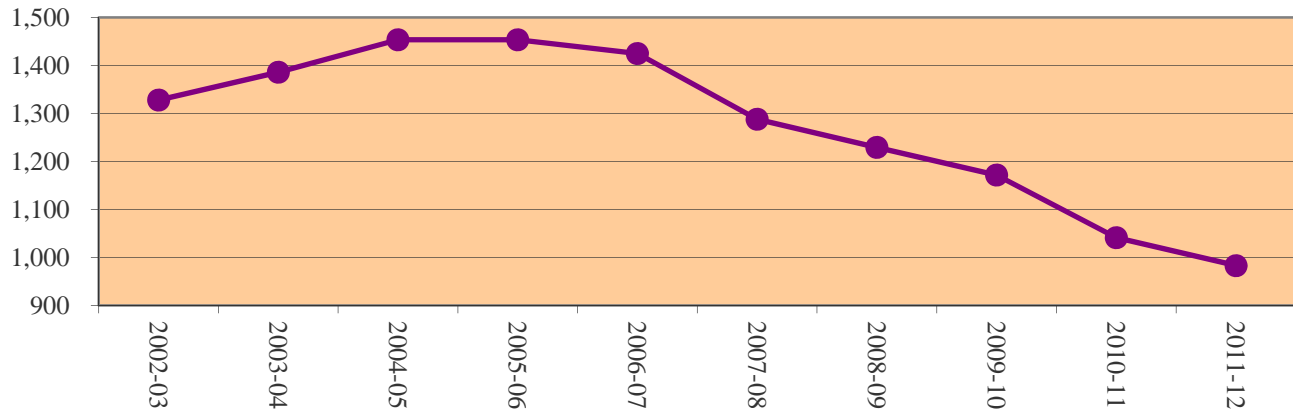
# COMMITMENT POPULATION TRENDS

FY 2002-03 Through FY 2011-12

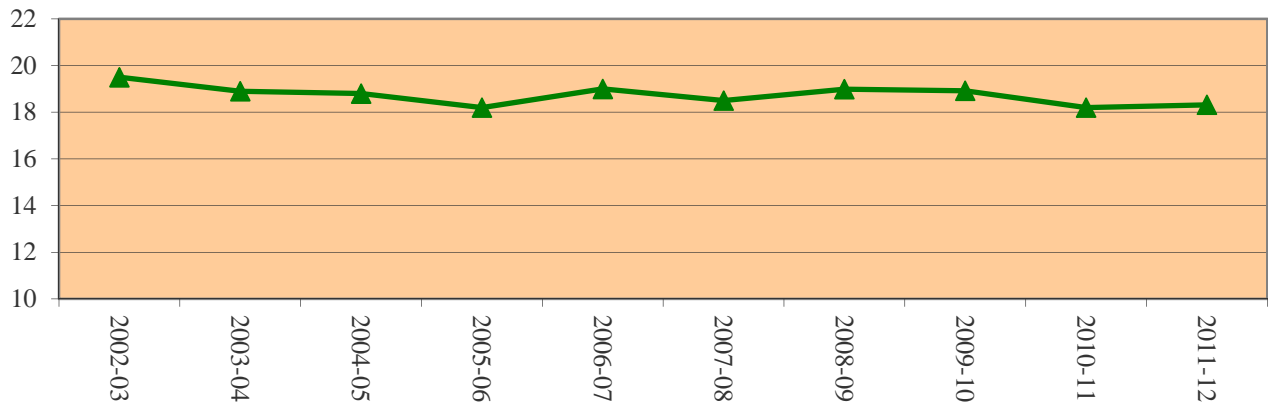
## Trends in New Commitments



## Trends in Commitment ADP



## Trends in Commitment LOS (Months)



**PREVIOUS JUVENILE JUSTICE INVOLVEMENT**

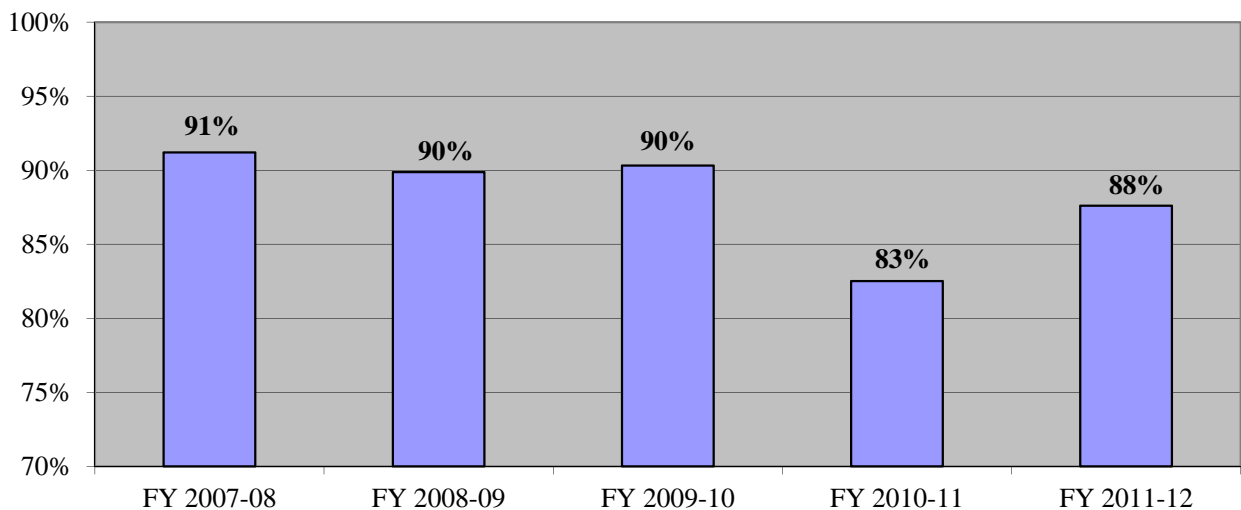
**5-Year New Commitment Trends**

		FY 2007-08		FY 2008-09		FY 2009-10		FY 2010-11		FY 2011-12	
		#	%	#	%	#	%	#	%	#	%
<b>1</b>	Probation	658	83%	602	79%	578	78%	464	72%	408	77%
<b>2</b>	Diversion/Informal Adjustment & Probation	65	8%	80	11%	93	13%	69	11%	59	11%
<b>3</b>	Deferred or "Reserved" Adjudication*	2	0%	1	0%	0	0%	0	0%	0	0%
<b>4</b>	No Probation	46	6%	56	7%	54	7%	90	14%	54	10%
<b>5</b>	Diversion/Informal Adjustment	16	2%	13	2%	15	2%	13	2%	9	2%
<b>6</b>	Unknown at time of Commitment	1	0%	2	0%	3	0%	10	2%	1	0%
<b>7</b>	Missing	7	1%	6	1%	0	0%	0	0%	2	0%
<b>TOTAL</b>		<b>795</b>	<b>100%</b>	<b>760</b>	<b>100%</b>	<b>743</b>	<b>100%</b>	<b>646</b>	<b>100%</b>	<b>533</b>	<b>100%</b>

\*The majority of Deferred youth have open Probation cases as well.

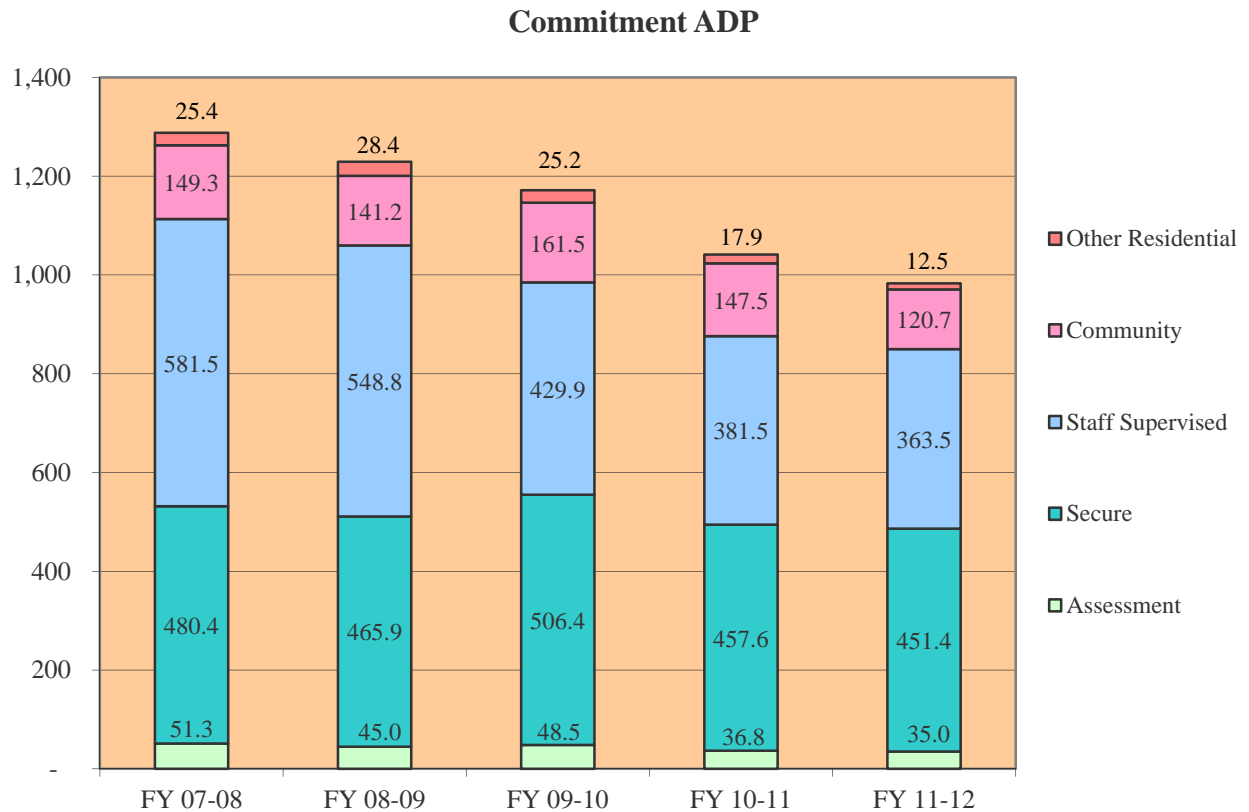
	FY 2007-08		FY 2008-09		FY 2009-10		FY 2010-11		FY 2011-12	
	#	%	#	%	#	%	#	%	#	%
<b>All Probation</b> (categories 1 & 2)	723	91%	682	90%	671	90%	533	83%	467	88%
<b>All Potential* Probation</b> (categories 1, 2 & 3)	725	91%	683	90%	671	90%	533	83%	467	88%

**Percent of DYC New Commitments With Previous Probation Involvement**



**COMMITMENT POPULATION TRENDS  
BY PROGRAM TYPE**

	<b>FY 2007-08</b>	<b>FY 2008-09</b>	<b>FY 2009-10</b>	<b>FY 2010-11</b>	<b>FY 2011-12</b>
Assessment	51.3	45.0	48.5	36.8	35.0
Secure	480.4	465.9	506.4	457.6	451.4
Staff Supervised	581.5	548.8	429.9	381.5	363.5
Community	149.3	141.2	161.5	147.5	120.7
Other Residential <sup>1</sup>	25.4	28.4	25.2	17.9	12.5
<b>Total Commitment ADP</b>	<b>1,287.9</b>	<b>1,229.2</b>	<b>1,171.6</b>	<b>1,041.3</b>	<b>983.1</b>



<sup>1</sup>Other Residential includes Group Homes, Job Corps, Hospitalizations, etc.

**COMMITMENT POPULATION**  
**CLIENTS SERVED & ADP BY PROGRAM**  
**Fiscal Year 2011-2012**

	Clients Served <sup>1</sup>	ADP
<b>Assessment</b>		
<i>State Operated</i>		
Grand Mesa YSC	63	4.2
Mount View YSC	237	13.2
Platte Valley YSC	184	10.6
Spring Creek YSC	116	7.0
<b>Total Assessment</b>	<b>586</b>	<b>35.0</b>
<b>Secure</b>		
<i>State Operated</i>		
Adams YSC <sup>2</sup>	N/A	0.0
Gilliam YSC <sup>2</sup>	N/A	0.0
Grand Mesa YSC	97	37.7
Lookout Mountain YSC	292	155.5
Marvin W. Foote YSC	102	8.1
Mount View YSC	344	58.3
Platte Valley YSC	269	49.9
Pueblo YSC <sup>2</sup>	N/A	0.0
Sol Vista YSC	25	6.5
Spring Creek YSC	152	40.9
Zebulon Pike YSC	74	39.7
<i>Subtotal State Operated</i>	<i>1,059</i>	<i>396.6</i>
<i>Privately Operated</i>		
Betty K. Marler Center	76	39.8
Robert Denier YSC	44	14.9
<i>Subtotal Privately Operated</i>	<i>120</i>	<i>54.8</i>
<b>Total Secure</b>	<b>1,280</b>	<b>451.4</b>
<b>Staff-Supervised (Contract)</b>		
Alternative Homes for Youth	39	10.8
Childrens Ark	13	2.2
Childrens Ark at Pueblo	10	3.7
Devereux Cleo Wallace	44	23.9
Gateway Residential	7	1.0
Gateway Residential-Delta	9	2.2
Gateway Residential-Grand Junction	2	0.5
Hand Up Homes for Youth-West	2	0.7
Hilltop/Residential Youth Services	18	3.6
Jefferson Hills Aurora	141	41.4
Ridgeview YSC	484	234.9
Robert A Brown Center	4	0.3
Southern Peaks	60	21.1
Third Way Center - Lowry	60	11.9
Turning Point Center Youth & Family	22	5.2
<b>Total Staff-Supervised (Contract)</b>	<b>797</b>	<b>363.5</b>

<sup>1</sup>Clients Served is an unduplicated count. Categorical totals are not a sum of individual program counts and are not available for all categories.

<sup>2</sup>Detention-only facilities periodically and briefly serve committed youth in certain instances.

**COMMITMENT POPULATION**  
**CLIENTS SERVED & ADP BY PROGRAM**

**Fiscal Year 2011-2012**

	Clients Served <sup>1</sup>	ADP
<b>Community (Contract)</b>		
Ariel Clinical Services	4	1.0
Boulder Community Treatment Center	1	0.1
Community Corrections and Work Release	5	0.9
Dale House Project	34	11.0
Denver Area Youth Services	9	2.8
Gateway Residential Program - Grand Junction	8	1.7
Griffith Centers for Children Inc.	23	6.0
Griffith Centers for Children Inc. Chins Up	1	0.5
Job Corps	18	4.5
Kids Crossing	2	1.3
Kidz Ark Sterling	5	0.2
Kidz Ark New Raymer Ranch	1	0.0
Lost and Found - Arvada	36	8.0
Lost and Found - Independent Living	1	0.1
Maple Star Colorado	1	0.0
Mesa County Community Corrections	2	0.6
Mt. Evans Qualifying House	31	12.1
Reflections for Youth (RFY) Grismore	4	0.7
Reflections for Youth (RFY) Prairie View	4	0.8
Savio House	10	1.9
Summit Treatment Service	46	10.4
Synergy	28	7.1
Third Way Center	20	4.7
Third Way Center - Pontiac	31	6.4
Third Way Center - York	46	8.4
Third Way Center - Lincoln	40	8.3
Turning Point Center - Youth and Family	27	5.9
Turning Point Center - Prospect	9	0.4
Turning Point - Mathews St.	29	4.5
Whimspire Child Placement Agency	4	2.0
Youthtrack San Louis Valley	8	1.5
Youthtrack Work and Learn	36	6.6
<b>Total Community (Contract)</b>	<b>388</b>	<b>120.7</b>
<b>Total Other Residential</b>	<b>55</b>	<b>12.5</b>

**STATEWIDE COMMITMENT**

**1,960**

**983.1**

<sup>1</sup>Clients Served is an unduplicated count. Categorical totals are not a sum of individual program counts.

<sup>2</sup>Mental Health, <sup>3</sup>Drug/Alcohol

**COMMITMENT POPULATION**

**NEW COMMITMENT & ADP DEMOGRAPHIC TRENDS**

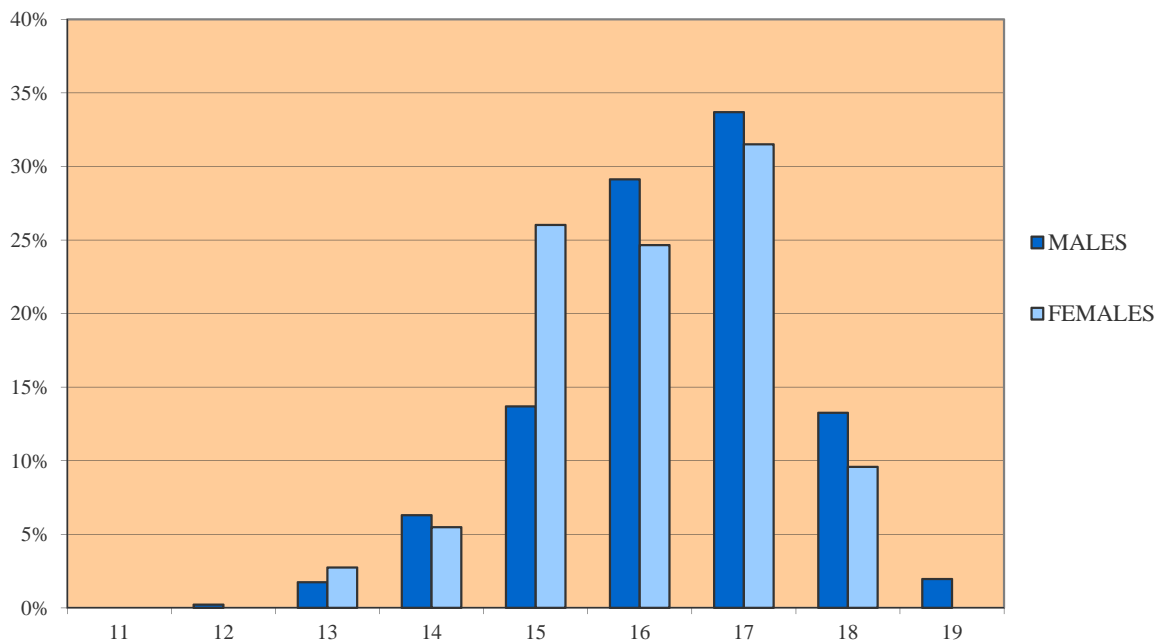
	FY 2009-10				FY 2010-11				FY 2011-12			
	New Commits	%	ADP	%	New Commits	%	ADP	%	New Commits	%	ADP	%
<b>GENDER</b>												
Male	651	87.6%	1,014.2	86.6%	550	85.1%	898.0	86.3%	460	86.3%	847.0	86.2%
Female	92	12.4%	157.4	13.4%	96	14.9%	143.2	13.8%	73	13.7%	136.1	13.8%
<b>TOTAL</b>	<b>743</b>	<b>100.0%</b>	<b>1,171.6</b>	<b>100.0%</b>	<b>646</b>	<b>100.0%</b>	<b>1,041.2</b>	<b>100.0%</b>	<b>533</b>	<b>100.0%</b>	<b>983.1</b>	<b>100.0%</b>
<b>ETHNICITY</b>												
Anglo-American	322	43.3%	500.5	42.7%	268	41.5%	439.6	42.2%	231	43.3%	411.1	41.8%
African-American	138	18.6%	238.9	20.4%	112	17.3%	207.7	19.9%	78	14.6%	185.2	18.8%
Hispanic/Latino	269	36.2%	395.2	33.7%	236	36.5%	356.2	34.2%	209	39.2%	347.8	35.4%
Native American	10	1.3%	24.5	2.1%	13	2.0%	22.9	2.2%	4	0.8%	16.0	1.6%
Asian-American	2	0.3%	7.0	0.6%	10	1.5%	9.2	0.9%	4	0.8%	11.8	1.2%
Other	2	0.3%	5.6	0.5%	7	1.1%	5.6	0.5%	7	1.3%	11.2	1.1%
<b>AGE<sup>1</sup></b>												
11 Years	0	0.0%	1.0	0.1%	0	0.0%	0.1	0.0%	0	0.0%	0.0	0.0%
12 Years	4	0.5%	4.8	0.4%	2	0.3%	5.1	0.5%	1	0.2%	5.7	0.6%
13 Years	9	1.2%	26.3	2.2%	9	1.4%	20.0	1.9%	10	1.9%	22.5	2.3%
14 Years	56	7.5%	92.7	7.9%	47	7.3%	93.1	8.9%	33	6.2%	90.6	9.2%
15 Years	134	18.0%	240.7	20.5%	93	14.4%	209.1	20.1%	82	15.4%	176.5	18.0%
16 Years	216	29.1%	323.6	27.6%	175	27.1%	292.0	28.0%	152	28.5%	275.4	28.0%
17 Years	236	31.8%	378.0	32.3%	237	36.7%	312.9	30.1%	178	33.4%	294.5	30.0%
18 Years	73	9.8%	92.9	7.9%	71	11.0%	92.3	8.9%	68	12.8%	102.9	10.5%
19 Years +	15	2.0%	11.6	1.0%	12	1.9%	16.6	1.6%	9	1.7%	15.0	1.5%
Average Age at Commitment:	16.7 Years				16.8 Years				16.8 Years			
Commitments per 10,000 Juvenile	13.8				11.9				9.7			

<sup>1</sup>New Commitment counts for each age category correspond to age at commitment. ADP figures for each age category, however, are based on the youth's age on the last day of the fiscal year.

**NEW COMMITMENT**  
**DEMOGRAPHIC TRENDS BY GENDER**

	MALES						FEMALES					
	FY 2009-10		FY 2010-11		FY 2011-12		FY 2009-10		FY 2010-11		FY 2011-12	
	N	%	N	%	N	%	N	%	N	%	N	%
<b>DEMOGRAPHIC DATA<sup>1</sup></b>												
<b>Ethnicity</b>												
Anglo-American	272	41.8%	221	40.2%	184	40.0%	50	54.3%	47	49.0%	47	64.4%
African-American	124	19.0%	93	16.9%	74	16.1%	14	15.2%	19	19.8%	4	5.5%
Hispanic/Latino	245	37.6%	212	38.5%	189	41.1%	24	26.1%	24	25.0%	20	27.4%
Native American	6	0.9%	11	2.0%	3	0.7%	4	4.3%	2	2.1%	1	1.4%
Asian-American	2	0.3%	7	1.3%	4	0.9%	0	0.0%	3	3.1%	0	0.0%
Other	2	0.3%	6	1.1%	6	1.3%	0	0.0%	1	1.0%	1	1.4%
<b>TOTAL NEW COMMITMENTS</b>	<b>651</b>	<b>100%</b>	<b>550</b>	<b>100%</b>	<b>460</b>	<b>100%</b>	<b>92</b>	<b>100.0%</b>	<b>96</b>	<b>100.0%</b>	<b>73</b>	<b>100.0%</b>
<b>Age</b>												
11 Years	0	0.0%	0	0.0%	0	0.0%	0	0.0%	0	0.0%	0	0.0%
12 Years	3	0.5%	2	0.4%	1	0.2%	1	1.1%	0	0.0%	0	0.0%
13 Years	7	1.1%	8	1.5%	8	1.7%	2	2.2%	1	1.0%	2	2.7%
14 Years	49	7.5%	43	7.8%	29	6.3%	7	7.6%	4	4.2%	4	5.5%
15 Years	116	17.8%	85	15.5%	63	13.7%	18	19.6%	8	8.3%	19	26.0%
16 Years	187	28.7%	147	26.7%	134	29.1%	29	31.5%	28	29.2%	18	24.7%
17 Years	211	32.4%	194	35.3%	155	33.7%	25	27.2%	43	44.8%	23	31.5%
18 Years	63	9.7%	59	10.7%	61	13.3%	10	10.9%	12	12.5%	7	9.6%
19 Years	15	2.3%	12	2.2%	9	2.0%	0	0.0%	0	0.0%	0	0.0%
<b>Average Age at Commitment</b>	<b>16.7 Yrs</b>		<b>16.8 Yrs</b>		<b>16.9 Yrs</b>		<b>16.5 Yrs</b>		<b>17.0 Yrs</b>		<b>16.6 Yrs</b>	

**FY 2011-12 Age at Commitment**



<sup>1</sup>Data based on new commitments.

**NEW COMMITMENT**  
**DEMOGRAPHIC TRENDS BY GENDER**

	MALES						FEMALES					
	FY 2009-10		FY 2010-11		FY 2010-12		FY 2009-10		FY 2010-11		FY 2011-12	
	N	%	N	%	N	%	N	%	N	%	N	%
<b>NEW COMMITMENT PROFILE</b>												
<b>Prior Adjudications</b>												
None	166	25.5%	161	29.3%	100	21.7%	43	46.7%	36	37.5%	28	38.4%
One	189	29.0%	140	25.5%	127	27.6%	18	19.6%	21	21.9%	19	26.0%
Two or more	296	45.5%	249	45.3%	233	50.7%	31	33.7%	39	40.6%	26	35.6%
<b>TOTAL NEW COMMITMENTS</b>	<b>651</b>	<b>100%</b>	<b>550</b>	<b>100%</b>	<b>460</b>	<b>100%</b>	<b>92</b>	<b>100%</b>	<b>96</b>	<b>100%</b>	<b>73</b>	<b>100%</b>
<b>Prior Out-of-Home Placements</b>												
None	244	37.5%	204	37.1%	162	35.2%	17	18.5%	17	17.7%	10	13.7%
One	175	26.9%	138	25.1%	115	25.0%	23	25.0%	29	30.2%	19	26.0%
Two or more	232	35.6%	208	37.8%	183	39.8%	52	56.5%	50	52.1%	44	60.3%
<b>Runaway History <sup>1</sup></b>												
No runaway history	244	37.5%	182	33.1%	147	32.0%	14	15.2%	8	8.3%	7	9.6%
Runaway history	407	62.5%	368	66.9%	313	68.0%	78	84.8%	88	91.7%	66	90.4%
<b>Assessed Substance Abuse Counseling Needs <sup>2</sup></b>												
Prevention	93	14.3%	71	12.9%	55	12.0%	7	7.6%	15	15.6%	9	12.3%
Intervention	128	19.7%	104	18.9%	82	17.8%	18	19.6%	11	11.5%	11	15.1%
Treatment	430	66.1%	373	67.8%	322	70.0%	67	72.8%	70	72.9%	53	72.6%
Data Not Available	0	0.0%	2	0.4%	1	0.2%	0	0.0%	0	0.0%	0	0.0%
<b>Assessed Mental Health Needs <sup>3</sup></b>												
Formal Intervention Required	339	52.1%	294	53.5%	259	56.3%	69	75.0%	70	72.9%	47	64.4%
No Formal Intervention Required	312	47.9%	256	46.5%	201	43.7%	23	25.0%	26	27.1%	26	35.6%
Average Age at First Adjudication:	14.6		14.7		14.5		14.6		15.1		14.9	

<sup>1</sup>Refers to running away from a secure or nonsecure placement as well as from home during the 12 months prior to commitment.

<sup>2</sup>Substance abuse history and treatment needs are assessed within one month of commitment. Youth with minimal substance abuse history and/or treatment needs are identified for prevention services whereas those reporting the greatest history of abuse and treatment needs are targeted for substance abuse treatment services.

<sup>3</sup>Colorado Client Assessment Record used to assess mental health needs within one month of commitment. Percentages are based on total New Commitment CCARs given and do not include missing data.

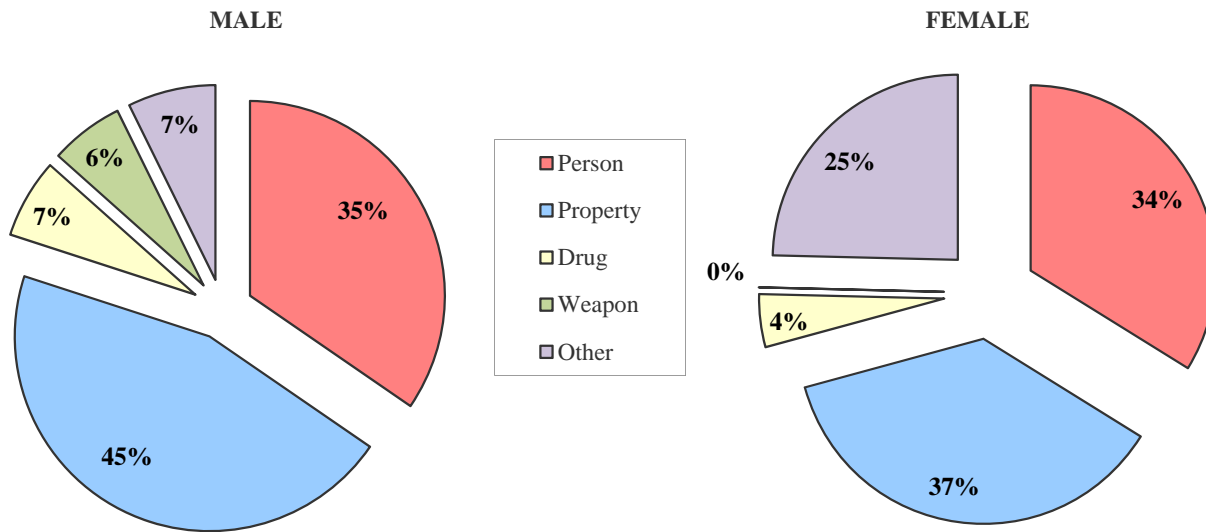


# NEW COMMITMENT TRENDS

## BY GENDER

	MALES						FEMALES					
	FY 2009-10		FY 2010-11		FY 2011-12		FY 2009-10		FY 2010-11		FY 2011-12	
	N	%	N	%	N	%	N	%	N	%	N	%
<b>NEW COMMITMENT DATA</b>												
<b>Offense Type</b>												
Person Felony	157	24.1%	111	20.2%	82	17.8%	13	14.1%	14	14.6%	8	11.0%
Person Misdemeanor	133	20.4%	105	19.1%	65	14.1%	30	32.6%	27	28.1%	14	19.2%
Property Felony	199	30.6%	184	33.5%	147	32.0%	9	9.8%	19	19.8%	14	19.2%
Property Misdemeanor	76	11.7%	55	10.0%	46	10.0%	16	17.4%	20	20.8%	10	13.7%
Drug Felony	39	6.0%	26	4.7%	27	5.9%	6	6.5%	7	7.3%	2	2.7%
Drug Misdemeanor	0	0.0%	2	0.4%	1	0.2%	1	1.1%	0	0.0%	1	1.4%
Weapons Felony	5	0.8%	8	1.5%	9	2.0%	0	0.0%	0	0.0%	0	0.0%
Weapons Misdemeanor	10	1.5%	3	0.5%	17	3.7%	1	1.1%	0	0.0%	0	0.0%
Other <sup>1</sup>	32	4.9%	33	6.0%	31	6.7%	16	17.4%	7	7.3%	16	21.9%
Data Not Available	0	0.0%	23	4.2%	35	7.6%	0	0.0%	2	2.1%	8	11.0%
<b>TOTAL NEW COMMITMENTS</b>	<b>651</b>	<b>100.0%</b>	<b>550</b>	<b>100.0%</b>	<b>460</b>	<b>100.0%</b>	<b>92</b>	<b>100.0%</b>	<b>96</b>	<b>100.0%</b>	<b>73</b>	<b>100.0%</b>
<b>Sentence Type</b>												
Non-Mandatory	447	68.7%	373	67.8%	307	66.7%	69	75.0%	73	76.0%	48	65.8%
Mandatory	149	22.9%	101	18.4%	90	19.6%	17	18.5%	17	17.7%	15	20.5%
Repeat	37	5.7%	57	10.4%	52	11.3%	5	5.4%	5	5.2%	8	11.0%
Violent	11	1.7%	3	0.5%	2	0.4%	0	0.0%	1	1.0%	0	0.0%
Aggravated Juvenile	7	1.1%	15	2.7%	8	1.7%	1	1.1%	0	0.0%	2	2.7%
Data Not Available	0	0.0%	1	0.2%	1	0.2%	0	0.0%	0	0.0%	0	0.0%

**FY 2011-12 Offense Type<sup>2</sup>**



<sup>1</sup>Includes other types of felony, misdemeanor and petty offenses

<sup>2</sup>Felony and Misdemeanor counts are combined

**NEW COMMITMENT**

**DEMOGRAPHIC TRENDS BY ETHNICITY**

**Age at Commitment**

Ethnicity			Age at Commitment										TOTAL NEW COMMITMENTS	Average Age at Commitment
			10	11	12	13	14	15	16	17	18	19+		
Anglo-American	FY 11-12	N	0	0	1	4	10	35	65	74	36	6	231	16.9
		%	0.0%	0.0%	0.4%	1.7%	4.3%	15.2%	28.1%	32.0%	15.6%	2.6%	100.0%	
	FY 10-11	N	0	0	1	3	17	34	65	99	40	9	268	17.0
		%	0.0%	0.0%	0.4%	1.1%	6.3%	12.7%	24.3%	36.9%	14.9%	3.4%	100.0%	
	FY 09-10	N	0	0	1	2	23	57	90	99	42	8	322	16.8
		%	0.0%	0.0%	0.3%	0.6%	7.1%	17.7%	28.0%	30.7%	13.0%	2.5%	100.0%	
African-American	FY 11-12	N	0	0	0	2	5	12	22	25	11	1	78	16.8
		%	0.0%	0.0%	0.0%	2.6%	6.4%	15.4%	28.2%	32.1%	14.1%	1.3%	100.0%	
	FY 10-11	N	0	0	0	1	4	17	37	41	10	2	112	16.8
		%	0.0%	0.0%	0.0%	0.9%	3.6%	15.2%	33.0%	36.6%	8.9%	1.8%	100.0%	
	FY 09-10	N	0	0	2	1	13	18	42	48	12	2	138	17.0
		%	0.0%	0.0%	1.4%	0.7%	9.4%	13.0%	30.4%	34.8%	8.7%	1.4%	100.0%	
Hispanic/Latino	FY 11-12	N	0	0	0	4	18	35	61	71	18	2	209	16.7
		%	0.0%	0.0%	0.0%	1.9%	8.6%	16.7%	29.2%	34.0%	8.6%	1.0%	100.0%	
	FY 10-11	N	0	0	1	4	21	37	67	87	18	1	236	16.7
		%	0.0%	0.0%	0.4%	1.7%	8.9%	15.7%	28.4%	36.9%	7.6%	0.4%	100.0%	
	FY 09-10	N	0	0	1	5	17	56	83	84	18	5	269	16.6
		%	0.0%	0.0%	0.4%	1.9%	6.3%	20.8%	30.9%	31.2%	6.7%	1.9%	100.0%	
Native American	FY 11-12	N	0	0	0	0	0	0	1	2	1	0	4	17.6
		%	0.0%	0.0%	0.0%	0.0%	0.0%	0.0%	0.0%	25.0%	50.0%	25.0%	0.0%	
	FY 10-11	N	0	0	0	0	3	4	3	2	1	0	13	16.0
		%	0.0%	0.0%	0.0%	0.0%	23.1%	30.8%	23.1%	15.4%	7.7%	0.0%	100.0%	
	FY 09-10	N	0	0	0	1	1	1	1	5	1	0	10	16.5
		%	0.0%	0.0%	0.0%	10.0%	10.0%	10.0%	10.0%	50.0%	10.0%	0.0%	100.0%	
Asian-American	FY 11-12	N	0	0	0	0	0	0	1	2	1	0	4	17.4
		%	0.0%	0.0%	0.0%	0.0%	0.0%	0.0%	0.0%	25.0%	50.0%	25.0%	0.0%	
	FY 10-11	N	0	0	0	0	2	1	1	5	1	0	10	16.8
		%	0.0%	0.0%	0.0%	0.0%	20.0%	10.0%	10.0%	50.0%	10.0%	0.0%	100.0%	
	FY 09-10	N	0	0	0	0	1	1	0	0	0	0	2	15.1
		%	0.0%	0.0%	0.0%	0.0%	50.0%	50.0%	0.0%	0.0%	0.0%	0.0%	100.0%	
Other	FY 11-12	N	0	0	0	0	0	0	2	4	1	0	7	17.4
		%	0.0%	0.0%	0.0%	0.0%	0.0%	0.0%	0.0%	28.6%	57.1%	14.3%	0.0%	
	FY 10-11	N	0	0	0	0	1	0	2	3	1	0	7	16.7
		%	0.0%	0.0%	0.0%	0.0%	14.3%	0.0%	28.6%	42.9%	14.3%	0.0%	100.0%	
	FY 09-10	N	0	0	0	0	1	1	0	0	0	0	2	15.2
		%	0.0%	0.0%	0.0%	0.0%	50.0%	50.0%	0.0%	0.0%	0.0%	0.0%	100.0%	

NEW COMMITMENT

DEMOGRAPHIC TRENDS BY ETHNICITY

Ethnicity	Year	N	Prior Adjudications			Prior Out-of-Home Placements			Runaway History		TOTAL NEW COMMITMENTS	Average Age at First Adjudication
			None	One	Two or more	None	One	Two or more	No Runaway History	Runaway History		
Anglo-American	FY 11-12	N	62	63	106	53	61	117	65	166	231	14.7
		%	26.8%	27.3%	45.9%	22.9%	26.4%	50.6%	28.1%	71.9%		
	FY 10-11	N	89	65	114	79	66	123	73	195	268	14.9
		%	33.2%	24.3%	42.5%	29.5%	24.6%	45.9%	27.2%	72.8%		
	FY 09-10	N	98	88	136	95	93	134	116	206	322	14.6
		%	30.4%	27.3%	42.2%	29.5%	28.9%	41.6%	36.0%	64.0%		
African-American	FY 11-12	N	16	27	35	19	20	39	17	61	78	14.7
		%	20.5%	34.6%	44.9%	24.4%	25.6%	50.0%	21.8%	78.2%		
	FY 10-11	N	37	24	51	32	28	52	35	77	112	14.8
		%	33.0%	21.4%	45.5%	28.6%	25.0%	46.4%	31.3%	68.8%		
	FY 09-10	N	38	48	52	45	40	53	35	103	138	14.6
		%	27.5%	34.8%	37.7%	32.6%	29.0%	38.4%	25.4%	74.6%		
Hispanic/Latino	FY 11-12	N	47	51	111	94	51	64	67	142	209	14.4
		%	22.5%	24.4%	53.1%	45.0%	24.4%	30.6%	32.1%	67.9%		
	FY 10-11	N	64	64	108	101	60	75	72	164	236	14.6
		%	27.1%	27.1%	45.8%	42.8%	25.4%	31.8%	30.5%	69.5%		
	FY 09-10	N	70	66	133	117	62	90	103	166	269	14.5
		%	26.0%	24.5%	49.4%	43.5%	23.0%	33.5%	38.3%	61.7%		
Native American	FY 11-12	N	2	0	2	2	0	2	2	2	4	16.0
		%	50.0%	0.0%	50.0%	50.0%	0.0%	50.0%	50.0%	50.0%		
	FY 10-11	N	3	4	6	4	7	2	5	8	13	14.5
		%	23.1%	30.8%	46.2%	30.8%	53.8%	15.4%	38.5%	61.5%		
	FY 09-10	N	3	3	4	1	3	6	3	7	10	14.4
		%	30.0%	30.0%	40.0%	10.0%	30.0%	60.0%	30.0%	70.0%		
Asian-American	FY 11-12	N	0	2	2	1	0	3	1	3	4	11.5
		%	0.0%	50.0%	50.0%	25.0%	0.0%	75.0%	25.0%	75.0%		
	FY 10-11	N	0	4	6	3	4	3	2	8	10	14.3
		%	0.0%	40.0%	60.0%	30.0%	40.0%	30.0%	20.0%	80.0%		
	FY 09-10	N	0	1	1	2	0	0	1	1	2	14.0
		%	0.0%	50.0%	50.0%	100.0%	0.0%	0.0%	50.0%	50.0%		
Other	FY 11-12	N	1	3	3	3	2	2	2	5	7	15.4
		%	14.3%	42.9%	42.9%	42.9%	28.6%	28.6%	28.6%	71.4%		
	FY 10-11	N	4	0	3	2	2	3	3	4	7	15.4
		%	57.1%	0.0%	42.9%	28.6%	28.6%	42.9%	42.9%	57.1%		
	FY 09-10	N	0	1	1	1	0	1	0	2	2	13.0
		%	0.0%	50.0%	50.0%	50.0%	0.0%	50.0%	0.0%	100.0%		

**NEW COMMITMENT**

**DEMOGRAPHIC TRENDS BY ETHNICITY**

Ethnicity		N	Assessed Substance Abuse Counseling Needs			Assessed Mental Health Intervention Needs		TOTAL NEW COMMITMENTS
			Prevention	Intervention	Treatment	No Formal Intervention Required	Formal Intervention Required	
Anglo-American	FY 11-12	N	40	30	161	90	141	231
		%	17.3%	13.0%	69.7%	39.0%	61.0%	
	FY 10-11	N	45	41	182	107	161	268
		%	16.8%	15.3%	67.9%	39.9%	60.1%	
	FY 09-10	N	49	49	224	121	201	322
		%	15.2%	15.2%	69.6%	37.6%	62.4%	
African-American	FY 11-12	N	10	23	45	31	47	78
		%	12.8%	29.5%	57.7%	39.7%	60.3%	
	FY 10-11	N	15	27	70	50	62	112
		%	13.4%	24.1%	62.5%	44.6%	55.4%	
	FY 09-10	N	23	33	82	74	64	138
		%	16.7%	23.9%	59.4%	53.6%	46.4%	
Hispanic/Latino	FY 11-12	N	12	41	156	98	111	209
		%	5.7%	19.6%	74.6%	46.9%	53.1%	
	FY 10-11	N	24	44	168	112	124	236
		%	10.2%	18.6%	71.2%	47.5%	52.5%	
	FY 09-10	N	24	61	184	133	136	269
		%	8.9%	22.7%	68.4%	49.4%	50.6%	
Native American	FY 11-12	N	0	0	4	2	2	4
		%	0.0%	0.0%	100.0%	50.0%	50.0%	
	FY 10-11	N	1	1	11	5	8	13
		%	7.7%	7.7%	84.6%	38.5%	61.5%	
	FY 09-10	N	2	3	5	5	5	10
		%	20.0%	30.0%	50.0%	50.0%	50.0%	
Asian-American	FY 11-12	N	1	0	3	2	2	4
		%	25.0%	0.0%	75.0%	50.0%	50.0%	
	FY 10-11	N	1	3	6	3	7	10
		%	10.0%	30.0%	60.0%	30.0%	70.0%	
	FY 09-10	N	1	0	1	2	0	2
		%	50.0%	0.0%	50.0%	100.0%	0.0%	
Other	FY 11-12	N	1	0	6	4	3	7
		%	14.3%	0.0%	85.7%	57.1%	42.9%	
	FY 10-11	N	0	0	7	5	2	7
		%	0.0%	0.0%	100.0%	71.4%	28.6%	
	FY 09-10	N	1	0	1	0	2	2
		%	50.0%	0.0%	50.0%	0.0%	100.0%	

NEW COMMITMENT

TRENDS BY ETHNICITY

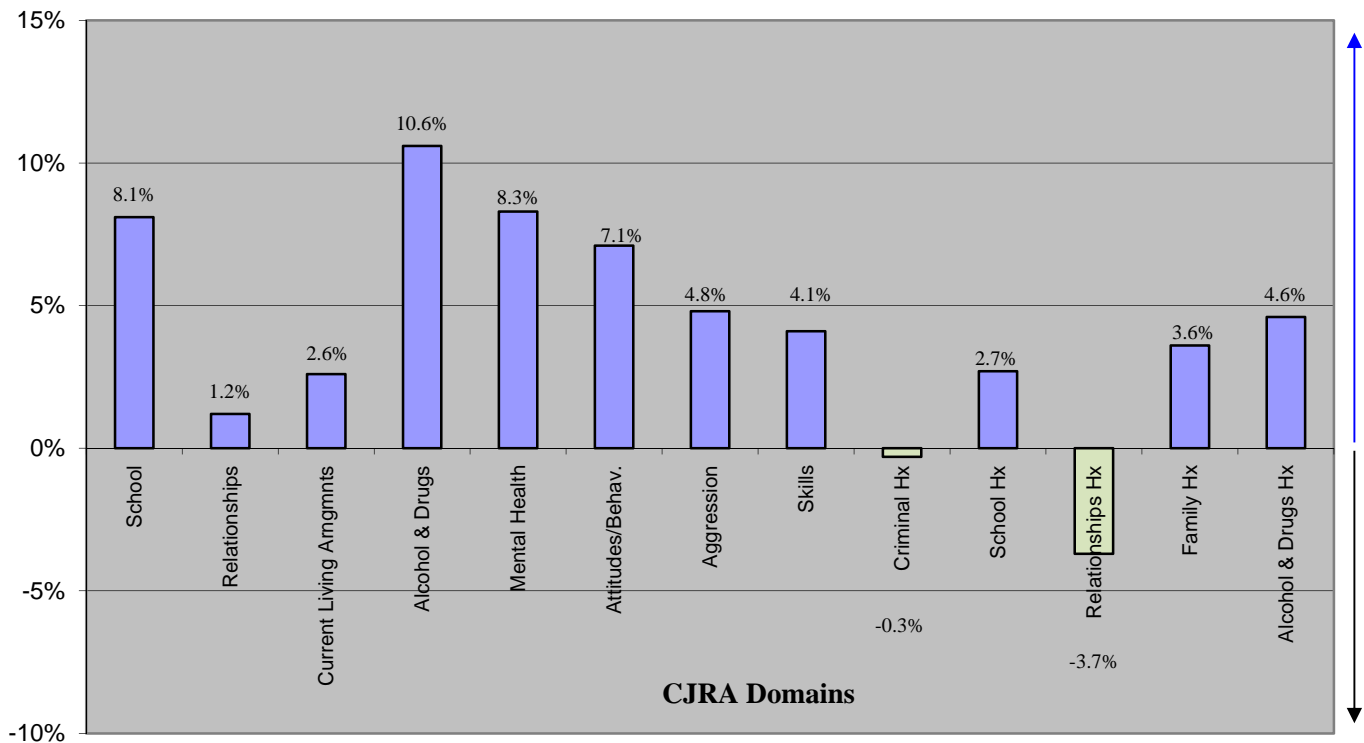
		Offense Type							Sentence Type						TOTAL NEW COMMITMENTS
		Person	Property	Drug	Weapon	Other	Data Not Available	Non-Mandatory	Mandatory	Repeat	Violent	Aggravated	Data Not Available		
<b>Ethnicity</b>															
Anglo-American	FY 11-12	N	75	88	16	8	24	20	157	44	22	0	7	1	231
		%	32.5%	38.1%	6.9%	3.5%	10.4%	8.7%	68.0%	19.0%	9.5%	0.0%	3.0%	0.4%	
	FY 10-11	N	125	102	14	4	23	0	194	44	24	1	5	0	268
		%	46.6%	38.1%	5.2%	1.5%	8.6%	0.0%	72.4%	16.4%	9.0%	0.4%	1.9%	0.0%	
	FY 09-10	N	139	134	19	2	28	0	228	73	18	2	1	0	322
		%	43.2%	41.6%	5.9%	0.6%	8.7%	0.0%	70.8%	22.7%	5.6%	0.6%	0.3%	0.0%	
African-American	FY 11-12	N	28	35	2	8	3	2	61	14	3	0	0	0	78
		%	35.9%	44.9%	2.6%	10.3%	3.8%	2.6%	78.2%	17.9%	3.8%	0.0%	0.0%	0.0%	
	FY 10-11	N	54	46	6	2	4	0	79	18	10	1	4	0	112
		%	48.2%	41.1%	5.4%	1.8%	3.6%	0.0%	70.5%	16.1%	8.9%	0.9%	3.6%	0.0%	
	FY 09-10	N	72	47	9	5	5	0	109	19	6	4	0	0	138
		%	52.2%	34.1%	6.5%	3.6%	3.6%	0.0%	79.0%	13.8%	4.3%	2.9%	0.0%	0.0%	
Hispanic/Latino	FY 11-12	N	63	88	10	9	19	20	128	43	33	2	3	0	209
		%	30.1%	42.1%	4.8%	4.3%	9.1%	9.6%	61.2%	20.6%	15.8%	1.0%	1.4%	0.0%	
	FY 10-11	N	90	113	13	5	15	0	154	49	25	2	5	1	236
		%	38.1%	47.9%	5.5%	2.1%	6.4%	0.0%	65.3%	20.8%	10.6%	0.8%	2.1%	0.4%	
	FY 09-10	N	118	112	17	9	13	0	169	70	18	5	7	0	269
		%	43.9%	41.6%	6.3%	3.3%	4.8%	0.0%	62.8%	26.0%	6.7%	1.9%	2.6%	0.0%	
Native American	FY 11-12	N	1	2	0	0	1	0	2	1	1	0	0	0	4
		%	25.0%	50.0%	0.0%	0.0%	25.0%	0.0%	50.0%	25.0%	25.0%	0.0%	0.0%	0.0%	
	FY 10-11	N	6	7	0	0	0	0	7	3	3	0	0	0	13
		%	46.2%	53.8%	0.0%	0.0%	0.0%	0.0%	53.8%	23.1%	23.1%	0.0%	0.0%	0.0%	
	FY 09-10	N	3	6	0	0	1	0	7	3	0	0	0	0	10
		%	30.0%	60.0%	0.0%	0.0%	10.0%	0.0%	70.0%	30.0%	0.0%	0.0%	0.0%	0.0%	
Asian-American	FY 11-12	N	1	0	1	1	0	1	3	1	0	0	0	0	4
		%	25.0%	0.0%	25.0%	25.0%	0.0%	25.0%	75.0%	25.0%	0.0%	0.0%	0.0%	0.0%	
	FY 10-11	N	3	5	2	0	0	0	7	3	0	0	0	0	10
		%	30.0%	50.0%	20.0%	0.0%	0.0%	0.0%	70.0%	30.0%	0.0%	0.0%	0.0%	0.0%	
	FY 09-10	N	1	1	0	0	0	0	2	0	0	0	0	0	2
		%	50.0%	50.0%	0.0%	0.0%	0.0%	0.0%	100.0%	0.0%	0.0%	0.0%	0.0%	0.0%	
Other	FY 11-12	N	1	4	2	0	0	0	4	2	1	0	0	0	7
		%	14.3%	57.1%	28.6%	0.0%	0.0%	0.0%	57.1%	28.6%	14.3%	0.0%	0.0%	0.0%	
	FY 10-11	N	2	5	0	0	0	0	5	1	0	0	1	0	7
		%	28.6%	71.4%	0.0%	0.0%	0.0%	0.0%	71.4%	14.3%	0.0%	0.0%	14.3%	0.0%	
	FY 09-10	N	0	1	1	0	0	0	1	1	0	0	0	0	2
		%	0.0%	50.0%	50.0%	0.0%	0.0%	0.0%	50.0%	50.0%	0.0%	0.0%	0.0%	0.0%	

## NEW COMMITMENT TRENDS BY YOUTH ACUITY (CJRA RISK)

### Initial CJRA Youth Risk Acuity Trends

CJRA Domain Area		YR 1	YR 2	YR 3	YR 4	YR 5	YR 1-5
		FY 07-08 % High Risk	FY 08-09 % High Risk	FY 09-10 % High Risk	FY 10-11 % High Risk	FY 11-12 % High Risk	% Change
<b>DYNAMIC RISK FACTORS</b>							
3b	School (current)	60.1%	62.5%	63.3%	64.5%	68.2%	8.1%
4b	Use of Free Time (current)	N/A	N/A	N/A	N/A	N/A	N/A
5b	Employment (current)	N/A	N/A	N/A	N/A	N/A	N/A
6b	Relationships (current)	79.2%	83.7%	83.4%	83.1%	80.4%	1.2%
7b	Current Living Arrangements	71.7%	73.8%	70.4%	71.6%	74.3%	2.6%
8b	Alcohol & Drugs (current)	58.1%	60.6%	58.8%	66.0%	68.7%	10.6%
9b	Mental Health (current)	12.3%	16.4%	19.2%	19.9%	20.6%	8.3%
10	Attitudes/Behaviors	90.0%	93.0%	95.6%	95.9%	97.1%	7.1%
11	Aggression	76.8%	80.7%	75.5%	77.8%	81.6%	4.8%
12	Skills	81.1%	80.5%	84.0%	83.5%	85.2%	4.1%
<b>STATIC RISK FACTORS</b>							
1	Criminal History	81.9%	77.3%	80.5%	78.2%	81.6%	-0.3%
2	Demographics	N/A	N/A	N/A	N/A	N/A	N/A
3a	School (history)	25.5%	29.7%	34.2%	26.6%	28.2%	2.7%
4a	Use of Free Time (historic)	N/A	N/A	N/A	N/A	N/A	N/A
5a	Employment (history)	N/A	N/A	N/A	N/A	N/A	N/A
6a	Relationships (history of)	54.8%	55.7%	58.9%	54.5%	51.1%	-3.7%
7a	Family (history)	73.1%	72.9%	73.4%	75.9%	76.7%	3.6%
8a	Alcohol & Drugs (history)	73.8%	74.7%	71.2%	73.5%	78.4%	4.6%
9a	Mental Health (history)	N/A	N/A	N/A	N/A	N/A	N/A

### % Change in Youth Acuity



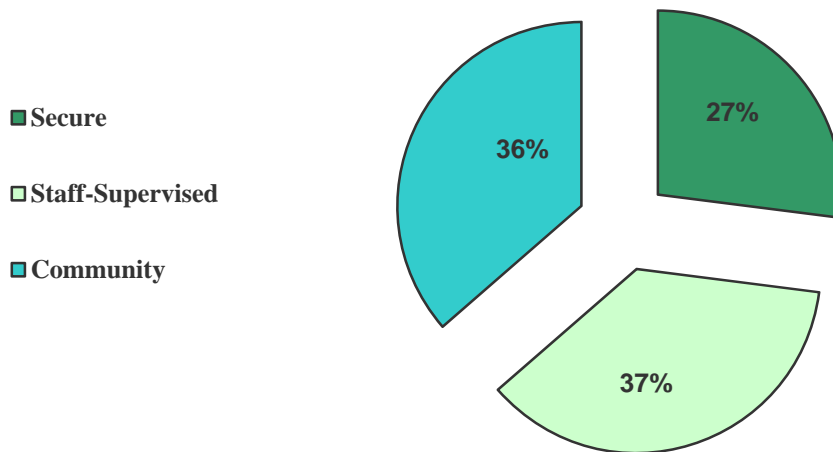
# NEW COMMITMENT TRENDS

## COMMITMENT CLASSIFICATION & MODIFICATION

	FY 2009-10		FY 2010-11		FY 2011-12	
	N	%	N	%	N	%
<b>INITIAL COMMITMENT CLASSIFICATION<sup>1</sup></b>						
Secure	183	24.6%	164	25.4%	144	27.0%
Staff-Supervised	259	34.9%	242	37.5%	195	36.6%
Community	301	40.5%	240	37.2%	194	36.4%
<b>Total</b>	<b>743</b>	<b>100%</b>	<b>646</b>	<b>100%</b>	<b>533</b>	<b>100%</b>

<b>SECURITY LEVEL MODIFICATION<sup>2</sup></b>						
Modified Increase in Security Level	159	21.4%	165	25.5%	142	26.6%
Modified Decrease in Security Level	8	1.1%	10	1.5%	31	5.8%
No Security Level Modification	576	77.5%	471	72.9%	360	67.5%
<b>Total</b>	<b>743</b>	<b>100%</b>	<b>646</b>	<b>100%</b>	<b>533</b>	<b>100%</b>

FY 2011-12 Initial Commitment Classification<sup>1</sup>



### Offense Severity Score

Serious Person: 8+	16	17	18	19	20	<div style="display: flex; flex-direction: column; align-items: center;"> <div style="width: 15px; height: 15px; background-color: #2e8b57; margin-bottom: 5px;"></div> Secure           <div style="width: 15px; height: 15px; background-color: #90ee90; margin-bottom: 5px; margin-left: 20px;"></div> Staff Supervised           <div style="width: 15px; height: 15px; background-color: #40e0d0; margin-bottom: 5px; margin-left: 20px;"></div> Community         </div>
Major Property, Lesser Person: 3 - 7	11	12	13	14	15	
Minor Property: 1 - 2	6	7	8	9	10	
Other Less Serious: 0	1	2	3	4	5	
	1-3	4-7	8-10	11-12	13-14	

### Recidivism Risk Score

<sup>1</sup>These initial security levels are subject to modification.

<sup>2</sup>Security Level Modification considers those factors pertaining to the current commitment charges and individualized service needs that support a recommendation to override the program security level resulting from the juvenile's classification score.

**COMMITMENT POPULATION**  
**ADP TRENDS & SPECIAL POPULATIONS**

	FY 2007-08		FY 2008-09		FY 2009-10		FY 2010-11		FY 2011-12	
	ADP	%	ADP	%	ADP	%	ADP	%	ADP	%
<b>Prior Adjudications</b>										
None	334.5	26.0%	321.7	26.2%	312.2	26.7%	288.8	27.7%	275.3	28.0%
One	420.0	32.6%	400.2	32.6%	346.0	29.5%	297.6	28.6%	264.3	26.9%
Two or more	533.2	41.4%	507.4	41.3%	513.5	43.8%	454.9	43.7%	443.4	45.1%
Data Not Available	0.1	0.0%	0.0	0.0%	0.0	0.0%	0.0	0.0%	0.0	0.0%
<b>TOTAL ADP</b>	<b>1287.9</b>	<b>100.0%</b>	<b>1229.2</b>	<b>100.0%</b>	<b>1171.6</b>	<b>100.0%</b>	<b>1041.3</b>	<b>100.0%</b>	<b>983.1</b>	<b>100.0%</b>
<b>Prior Out-of-Home Placements</b>										
None	359.0	27.9%	360.8	29.4%	348.6	29.8%	319.0	30.6%	296.0	30.1%
One	331.6	25.7%	314.9	25.6%	298.9	25.5%	262.2	25.2%	242.6	24.7%
Two or more	597.2	46.4%	553.5	45.0%	524.2	44.7%	460.1	44.2%	444.4	45.2%
Data Not Available	0.1	0.0%	0.0	0.0%	0.0	0.0%	0.0	0.0%	0.0	0.0%
<b>TOTAL ADP</b>	<b>1287.9</b>	<b>100.0%</b>	<b>1229.2</b>	<b>100.0%</b>	<b>1171.6</b>	<b>100.0%</b>	<b>1041.3</b>	<b>100.0%</b>	<b>983.1</b>	<b>100.0%</b>
<b>Runaway History<sup>1</sup></b>										
No runaway history	425.8	33.1%	381.4	31.0%	356.5	30.4%	309.5	29.7%	280.5	28.5%
Runaway history	838.4	65.1%	834.9	67.9%	815.1	69.6%	731.8	70.3%	702.6	71.5%
Data Not Available	23.7	1.8%	12.9	1.1%	0.0	0.0%	0.0	0.0%	0.0	0.0%
<b>TOTAL ADP</b>	<b>1287.9</b>	<b>100.0%</b>	<b>1229.2</b>	<b>100.0%</b>	<b>1171.6</b>	<b>100.0%</b>	<b>1041.3</b>	<b>100.0%</b>	<b>983.1</b>	<b>100.0%</b>
<b>DYC SPECIAL POPULATION TRENDS</b>										
<b>Assessed Substance Abuse Counseling Needs<sup>2</sup></b>										
Prevention	202.4	15.7%	169.9	13.8%	169.5	14.5%	157.2	15.1%	150.4	15.3%
Intervention	338.2	26.3%	329.2	26.8%	258.6	22.1%	204.1	19.6%	186.7	19.0%
Treatment	747.0	58.0%	728.6	59.3%	743.6	63.5%	679.4	65.2%	644.0	65.5%
Data Not Available	0.3	0.0%	1.6	0.1%	0.0	0.0%	0.6	0.1%	1.9	0.2%
<b>TOTAL ADP</b>	<b>1287.9</b>	<b>100.0%</b>	<b>1229.2</b>	<b>100.0%</b>	<b>1171.6</b>	<b>100.0%</b>	<b>1041.3</b>	<b>100.0%</b>	<b>983.1</b>	<b>100.0%</b>
<b>Assessed Mental Health Needs<sup>3</sup></b>										
Formal MH Intervention Required	728.6	56.6%	619.8	50.4%	640.0	54.6%	622.2	59.8%	585.6	59.6%
No Formal MH Intervention Required	559.3	43.4%	609.4	49.6%	531.6	45.4%	419.1	40.2%	397.4	40.4%
Data Not Available	0.0	0.0%	0.0	0.0%	0.0	0.0%	0.0	0.0%	0.0	0.0%
<b>TOTAL ADP</b>	<b>1287.9</b>	<b>100.0%</b>	<b>1229.2</b>	<b>100.0%</b>	<b>1171.6</b>	<b>100.0%</b>	<b>1041.3</b>	<b>100.0%</b>	<b>983.1</b>	<b>100.0%</b>
<b>Youth Requiring Sexual Offense Specific Treatment<sup>4</sup></b>										
Youth Requiring S.O. Specific Tx	212.1	16.5%	179.7	14.6%	150.9	12.9%	127.3	12.2%	130.5	13.3%
Youth Not Requiring S.O. Specific Tx	1075.8	83.5%	1049.5	85.4%	1020.8	87.1%	913.9	87.8%	852.6	86.7%
<b>TOTAL ADP</b>	<b>1287.9</b>	<b>100.0%</b>	<b>1229.2</b>	<b>100.0%</b>	<b>1171.6</b>	<b>100.0%</b>	<b>1041.3</b>	<b>100.0%</b>	<b>983.1</b>	<b>100.0%</b>

<sup>1</sup>Refers to running away from a secure or nonsecure placement as well as from home during the 12 months prior to commitment.

<sup>2</sup>Substance abuse history and treatment needs are assessed within one month of commitment. Youth with minimal substance abuse history and/or treatment needs are identified for prevention services whereas those reporting the greatest history of abuse and treatment needs are targeted for substance abuse treatment services.

<sup>3</sup>Colorado Client Assessment Record used to assess mental health needs within one month of commitment. Percentages are based on Total Commitment ADP of CCARs given at time of assessment.

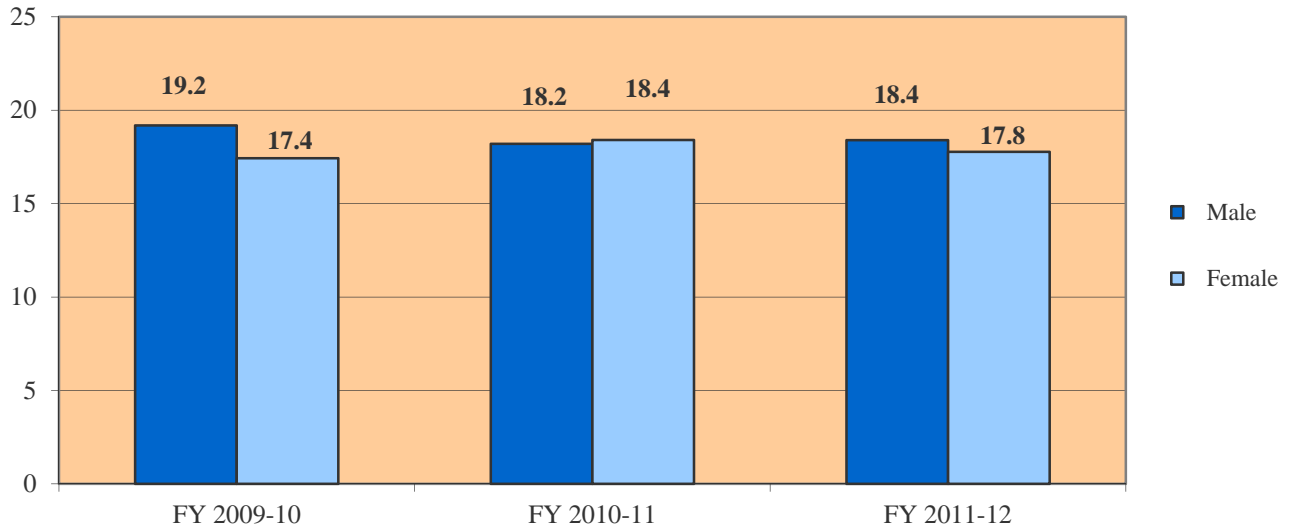
<sup>4</sup>According to Sex Offender Management Board (SOMB) Standards.



**COMMITMENT POPULATION**  
**LENGTH OF SERVICE (LOS) TRENDS**

	FY 2009-10	FY 2010-11	FY 2011-12
<b>GENDER</b>			
Male	19.2	18.2	18.4
Female	17.4	18.4	17.8
<b>TOTAL Commitment LOS (months)</b>	<b>18.9</b>	<b>18.2</b>	<b>18.3</b>
<b>ETHNICITY</b>			
Anglo-American	18.4	18.0	18.4
African-American	19.7	19.3	19.5
Hispanic/Latino	19.0	17.5	17.3
Native American	20.0	25.1	20.6
Asian-American	21.8	15.1	19.2
Other	25.3	20.3	21.3
<b>AGE<sup>1</sup></b>			
11 Years	N/A	N/A	36.1
12 Years	41.9	32.9	43.1
13 Years	32.0	24.5	34.4
14 Years	23.5	25.5	23.0
15 Years	21.2	21.7	20.6
16 Years	18.3	17.8	18.6
17 Years	16.3	15.7	16.2
18 Years	17.3	16.1	15.8
19 Years	16.5	12.1	17.6

**Commitment LOS  
(months)**



<sup>1</sup> Refers to Age at Commitment

**COMMITMENT OVERVIEW**  
**BY REGION & JUDICIAL DISTRICT**

Region <sup>1</sup>	JD	New Commitments	ADP	LOS (months)
<b>Central</b>				
	1st	78	120.9	18.1
	2nd	75	152.8	20.9
	5th	2	4.0	16.1
	18th	61	156.8	16.6
<b>Central Total</b>		<b>216</b>	<b>434.4</b>	<b>18.9</b>
<b>Northeast</b>				
	8th	45	61.6	14.7
	13th	9	11.2	14.3
	17th	45	81.1	20.1
	19th	53	70.5	17.3
	20th	10	13.9	19.4
<b>Northeast Total</b>		<b>162</b>	<b>238.3</b>	<b>16.8</b>
<b>Southern</b>				
	3rd	1	2.3	20.7
	4th	65	148.1	21.8
	10th	9	25.0	18.7
	11th	8	11.5	25.2
	12th	11	11.1	17.8
	15th	4	2.1	9.2
	16th	7	7.3	11.4
<b>Southern Total</b>		<b>105</b>	<b>207.5</b>	<b>19.8</b>
<b>Western</b>				
	6th	13	21.7	14.0
	7th	11	15.8	15.0
	9th	8	8.8	13.9
	14th	2	4.1	25.3
	21st	15	44.5	18.9
	22nd	1	7.9	20.4
<b>Western Total</b>		<b>50</b>	<b>102.8</b>	<b>17.0</b>
<b>Statewide Total</b>		<b>533</b>	<b>983.1</b>	<b>18.3</b>

<sup>1</sup>Region is defined here by the JD in which the client was committed. Regional totals are then a sum of their respective judicial districts.

## COMMITMENT OVERVIEW

### ETHNICITY BY REGION & JUDICIAL DISTRICT

Region	JD	Anglo-American		African-American		Hispanic / Latino		Native-American		Asian-American		Other		TOTAL	
		ADP	%	ADP	%	ADP	%	ADP	%	ADP	%	ADP	%	ADP	%
<b>Central</b>															
	1st	63.5	52.5%	13.2	10.9%	40.6	33.6%	2.0	1.7%	0.8	0.7%	0.8	0.6%	120.9	100%
	2nd	17.2	11.2%	56.3	36.8%	76.2	49.9%	1.8	1.2%	1.3	0.8%	0.0	0.0%	152.8	100%
	5th	2.0	50.2%	0.0	0.0%	2.0	49.8%	0.0	0.0%	0.0	0.0%	0.0	0.0%	4.0	100%
	18th	66.8	42.6%	51.6	32.9%	34.1	21.8%	0.1	0.0%	2.6	1.7%	1.5	0.9%	156.8	100%
<b>Central Total</b>		<b>149.5</b>	<b>34.4%</b>	<b>121.1</b>	<b>27.9%</b>	<b>152.9</b>	<b>35.2%</b>	<b>3.9</b>	<b>0.9%</b>	<b>4.7</b>	<b>1.1%</b>	<b>2.2</b>	<b>0.5%</b>	<b>434.4</b>	<b>100%</b>
<b>Northeast</b>															
	8th	40.4	65.6%	2.0	3.3%	17.0	27.5%	0.7	1.2%	0.0	0.0%	1.5	2.4%	61.6	100%
	13th	5.4	48.3%	1.7	15.2%	4.1	36.6%	0.0	0.0%	0.0	0.0%	0.0	0.0%	11.2	100%
	17th	34.3	42.3%	9.1	11.2%	34.9	43.0%	0.0	0.0%	2.8	3.5%	0.0	0.0%	81.1	100%
	19th	24.4	34.7%	2.2	3.1%	42.9	60.9%	0.0	0.0%	0.0	0.0%	1.0	1.4%	70.5	100%
	20th	6.2	44.7%	1.0	6.9%	5.4	39.1%	0.4	2.8%	0.9	6.5%	0.0	0.0%	13.9	100%
<b>Northeast Total</b>		<b>110.8</b>	<b>46.5%</b>	<b>16.0</b>	<b>6.7%</b>	<b>104.3</b>	<b>43.8%</b>	<b>1.1</b>	<b>0.5%</b>	<b>3.7</b>	<b>1.6%</b>	<b>2.5</b>	<b>1.0%</b>	<b>238.3</b>	<b>100%</b>
<b>Southern</b>															
	3rd	1.4	61.7%	0.0	0.0%	0.9	38.3%	0.0	0.0%	0.0	0.0%	0.0	0.0%	2.3	100%
	4th	65.1	43.9%	42.6	28.7%	34.1	23.0%	0.5	0.3%	2.4	1.6%	3.6	2.4%	148.1	100%
	10th	4.0	15.9%	2.0	7.8%	19.0	75.9%	0.1	0.4%	0.0	0.0%	0.0	0.0%	25.0	100%
	11th	10.2	88.5%	0.0	0.0%	1.3	11.5%	0.0	0.0%	0.0	0.0%	0.0	0.0%	11.5	100%
	12th	1.2	11.2%	0.0	0.0%	9.1	81.9%	0.0	0.0%	0.0	0.0%	0.8	6.8%	11.1	100%
	15th	1.1	52.5%	0.0	0.0%	1.0	47.5%	0.0	0.0%	0.0	0.0%	0.0	0.0%	2.1	100%
	16th	1.5	20.2%	0.0	0.0%	5.9	79.8%	0.0	0.0%	0.0	0.0%	0.0	0.0%	7.3	100%
<b>Southern Total</b>		<b>84.5</b>	<b>40.7%</b>	<b>44.5</b>	<b>21.4%</b>	<b>71.2</b>	<b>34.3%</b>	<b>0.5</b>	<b>0.3%</b>	<b>2.4</b>	<b>1.2%</b>	<b>4.3</b>	<b>2.1%</b>	<b>207.5</b>	<b>100%</b>
<b>Western</b>															
	6th	11.2	51.5%	1.0	4.7%	3.6	16.4%	4.8	22.3%	0.0	0.0%	1.1	5.1%	21.7	100%
	7th	10.8	68.5%	0.0	0.0%	4.2	26.6%	0.8	4.9%	0.0	0.0%	0.0	0.0%	15.8	100%
	9th	5.2	59.5%	0.0	0.0%	3.6	40.5%	0.0	0.0%	0.0	0.0%	0.0	0.0%	8.8	100%
	14th	2.9	70.5%	0.0	0.0%	1.2	29.5%	0.0	0.0%	0.0	0.0%	0.0	0.0%	4.1	100%
	21st	32.0	71.8%	2.6	5.8%	6.8	15.3%	1.2	2.6%	1.0	2.2%	1.0	2.2%	44.5	100%
	22nd	4.2	53.3%	0.0	0.0%	0.0	0.0%	3.7	46.7%	0.0	0.0%	0.0	0.0%	7.9	100%
<b>Western Total</b>		<b>66.3</b>	<b>64.5%</b>	<b>3.6</b>	<b>3.5%</b>	<b>19.3</b>	<b>18.8%</b>	<b>10.5</b>	<b>10.2%</b>	<b>1.0</b>	<b>1.0%</b>	<b>2.1</b>	<b>2.0%</b>	<b>102.8</b>	<b>100%</b>
<b>Statewide Total</b>		<b>411.1</b>	<b>41.8%</b>	<b>185.2</b>	<b>18.8%</b>	<b>347.8</b>	<b>35.4%</b>	<b>16.0</b>	<b>1.6%</b>	<b>11.8</b>	<b>1.2%</b>	<b>11.2</b>	<b>1.1%</b>	<b>983.1</b>	<b>100%</b>

## PAROLE POPULATION TRENDS

### 10 Year Parole Trends

Fiscal Year	Clients Served <sup>1</sup>	Percentage Change +/-	New Intakes	Percentage Change +/-	ADP	Percentage Change +/-	LOS (Months)	Percentage Change +/-
2002-03	N/A	N/A	N/A	N/A	567.3	-18.1%	N/A	N/A
2003-04	1,487	N/A	761	N/A	535.6	-5.6%	8.0	N/A
2004-05	1,596	7.3%	889	16.8%	490.3	-8.5%	7.1	-11.3%
2005-06	1,863	16.7%	898	1.0%	508.7	3.8%	6.4	-9.9%
2006-07	1,908	2.4%	938	4.5%	522.6	2.7%	6.8	6.2%
2007-08	1,431	-25.0%	880	-6.2%	509.4	-2.5%	6.7	-1.5%
2008-09	1,270	-11.3%	740	-15.9%	436.6	-14.3%	6.6	-1.5%
2009-10	1,270	0.0%	799	8.0%	446.9	2.4%	6.7	1.8%
2010-11	1,173	-7.6%	712	-10.9%	418.0	-6.5%	6.7	-0.4%
2011-12	1,056	-10.0%	617	-13.3%	363.0	-13.1%	7.0	3.9%

The parole population in Fiscal Year 2011-12 experienced several decreases. Clients served on parole declined (-10.0%) as well as new Parole intakes (-13.3%). The average daily population also declined by 13.1% or 55.0 ADP.

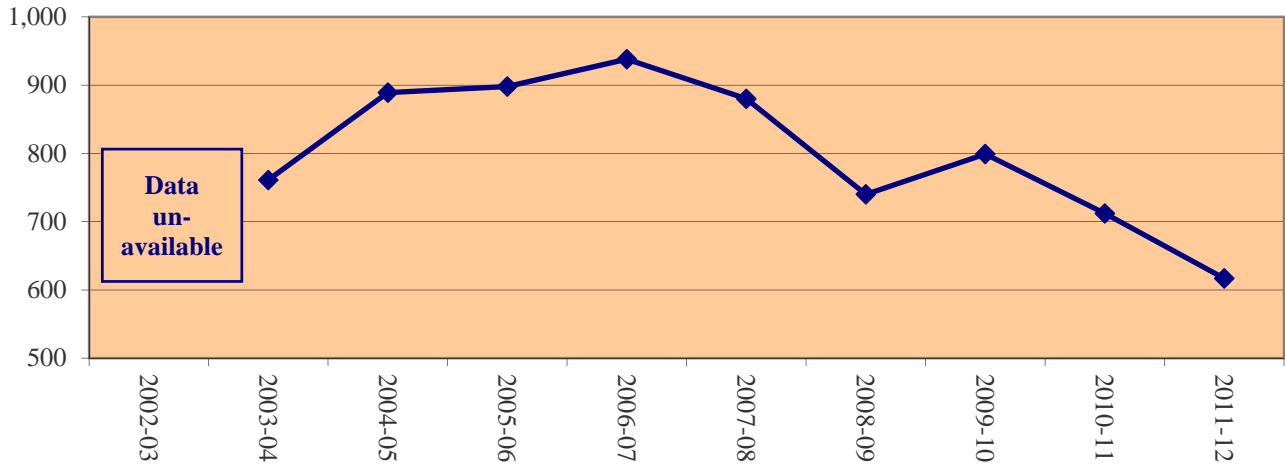
Fiscal Year 2011-12 was the eighth full year following the implementation of Senate Bill 03-284, which shortened the mandatory parole length from nine to six months, effective May 1, 2003. Since the passage of SB 03-284, the parole LOS has continued to slightly exceed the mandatory parole period of six months. For many high risk youth, the Parole Board has the statutory authority to extend parole for 90 days if determined to be “within the best interest of the juvenile and the public to do so” or for an additional 15 months if there is a “finding of special circumstances” for youth adjudicated for certain offenses (e.g., violent offense, sex offenses, etc.). A decline in parole LOS was anticipated as a result of the legislation that reduced mandatory parole length of stay from nine to six months, and this decline did occur the first two years following implementation. Overall parole LOS has remained stable for the past six years, ranging from 6.6 months to 7.0 months.

<sup>1</sup>Clients served counts are unduplicated.

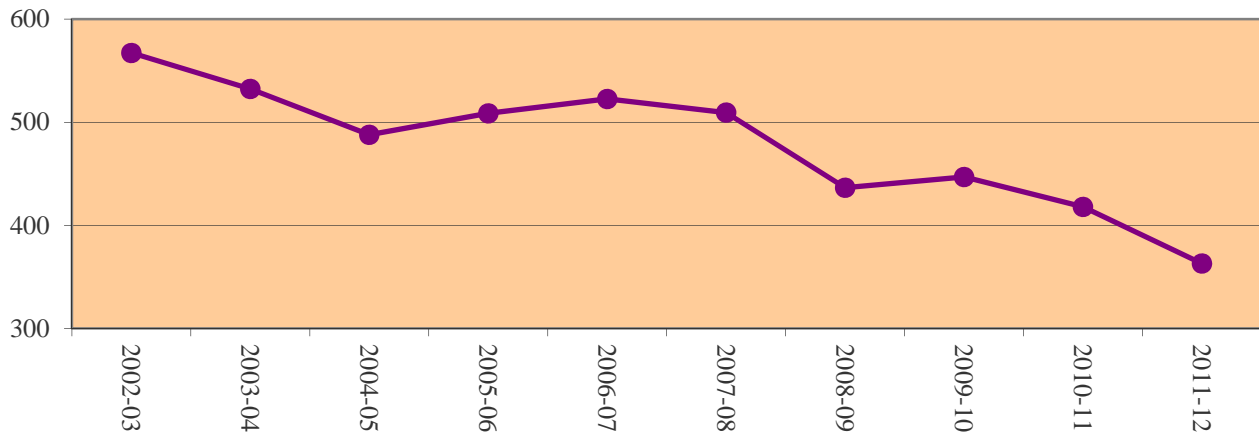
# PAROLE POPULATION TRENDS

FY 2002-03 Through FY 2011-12

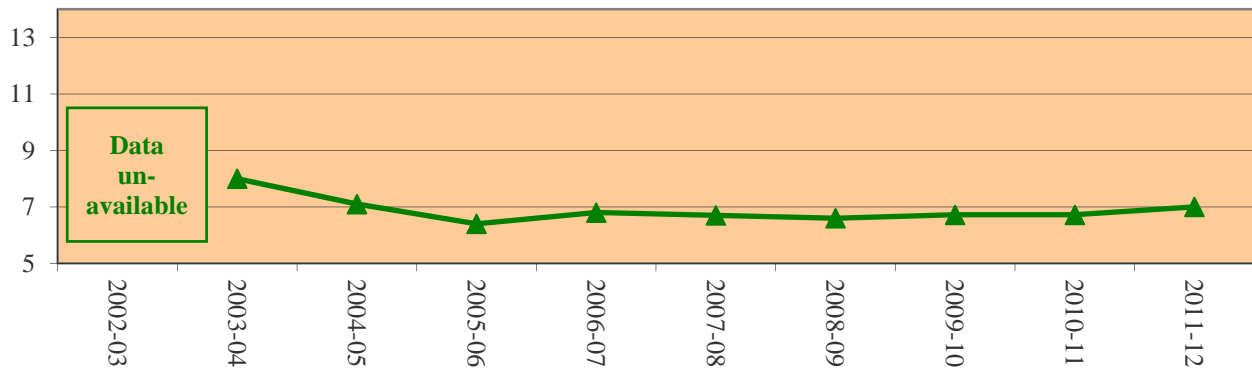
### Trends in New Parole Intakes



### Trends in Parole ADP



### Trends in Parole LOS (Months)



# PAROLE POPULATION

## DEMOGRAPHIC TRENDS

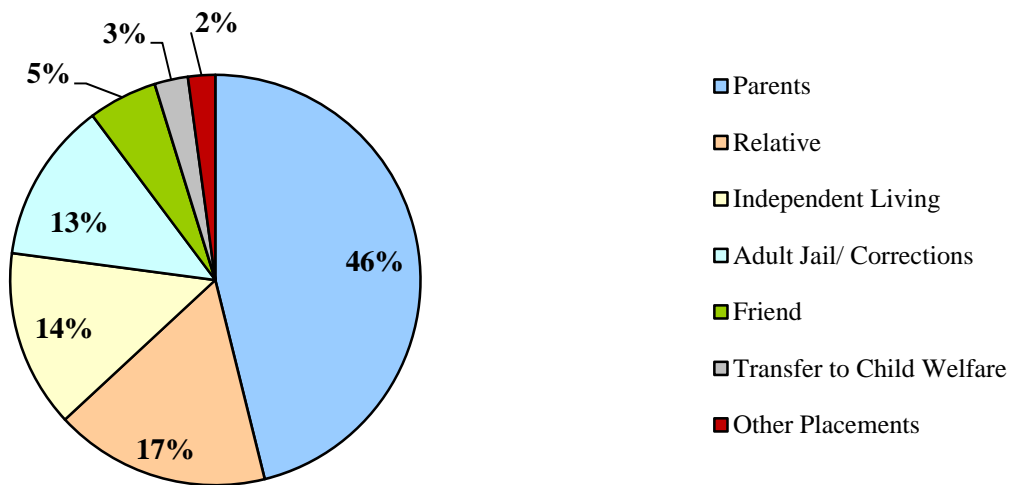
	FY 2009-10			FY 2010-11			FY 2011-12		
			LOS			LOS			LOS
	ADP	%	(months)	ADP	%	(months)	ADP	%	(months)
<b>DYC REGION</b>									
Central	191.0	42.8%	6.7	186.6	44.7%	6.6	163.2	44.9%	7.3
Northeast	124.1	27.8%	7.0	110.9	26.5%	6.3	97.3	26.8%	6.5
Southern	85.9	19.2%	6.7	81.4	19.5%	7.2	67.8	18.7%	6.9
Western	45.9	10.3%	6.1	39.1	9.4%	7.5	34.7	9.6%	6.9
<b>TOTAL</b>	<b>446.9</b>	<b>100%</b>	<b>6.7</b>	<b>418.0</b>	<b>100%</b>	<b>6.7</b>	<b>363.0</b>	<b>100%</b>	<b>7.0</b>
<b>GENDER</b>									
Male	393.1	88.0%	6.9	364.9	87.3%	6.7	318.6	87.8%	7.1
Female	53.9	12.1%	6.0	53.1	12.7%	6.4	44.4	12.2%	6.2
<b>ETHNICITY</b>									
Anglo American	191.0	42.7%	6.6	182.5	43.7%	6.8	148.5	40.9%	6.8
African-American	74.4	16.7%	6.8	85.4	20.4%	6.9	70.1	19.3%	7.4
Hispanic/Latino	169.0	37.8%	6.8	136.2	32.6%	6.6	133.9	36.9%	6.8
Native American	7.9	1.8%	7.4	9.6	2.3%	5.7	6.3	1.7%	7.7
Asian-American	3.2	0.7%	5.4	2.0	0.5%	6.0	2.8	0.8%	7.0
Other	1.4	0.3%	9.3	2.3	0.6%	6.0	1.4	0.4%	8.2
<b>AGE<sup>1</sup></b>									
13 Years	0.0	0.0%	0.0	0.0	0.0%	6.1	0.0	0.0%	0.0
14 Years	0.8	0.2%	14.5	0.9	0.2%	7.5	0.0	0.0%	9.6
15 Years	6.5	1.5%	9.4	5.3	1.3%	9.1	4.1	1.1%	7.5
16 Years	27.5	6.2%	8.5	18.5	4.4%	7.4	17.1	4.7%	8.7
17 Years	66.0	14.8%	6.8	56.3	13.5%	7.3	52.2	14.4%	7.5
18 Years	120.8	27.0%	6.3	109.0	26.1%	6.6	90.4	24.9%	6.9
19 Years +	225.3	50.4%	6.6	228.1	54.6%	6.3	199.3	54.9%	6.6

<sup>1</sup>LOS for each age category corresponds to age at the time of parole. ADP figures are based on the youth's age on the last day of the fiscal year.

## DISCHARGE TRENDS

	FY 2009-10		FY 2010-11		FY 2011-12	
	N	%	N	%	N	%
<b>DISCHARGED YOUTH</b>						
<b>DISCHARGE PLACEMENT</b>						
Parents <sup>1</sup>	359	43.6%	375	47.7%	280	42.7%
Relative	92	11.2%	122	15.5%	103	15.7%
Independent Living	108	13.1%	97	12.3%	85	13.0%
Adult Jail/ Corrections	112	13.6%	84	10.7%	77	11.8%
Friend	52	6.3%	34	4.3%	33	5.0%
Transfer to Child Welfare	14	1.7%	14	1.8%	16	2.4%
Other Placements	11	2.3%	11	1.4%	13	2.0%
Unknown/Data Not Available	19	1.3%	13	1.7%	12	1.8%
Institution (MH/DA <sup>2</sup> )	17	2.1%	10	1.3%	7	1.1%
Deported	10	1.2%	9	1.1%	7	1.1%
Job Corps	9	0.2%	2	0.3%	6	0.9%
Residential Child Care Facility	2	1.0%	4	0.5%	4	0.6%
Spouse	3	0.4%	2	0.3%	4	0.6%
Shelter Care (Short Term)	8	1.1%	3	0.4%	3	0.5%
Deceased	0	0.0%	2	0.3%	2	0.3%
Escape	4	0.1%	1	0.1%	2	0.3%
Foster Care Family	1	0.1%	1	0.1%	1	0.2%
Adoptive Family	1	0.1%	1	0.1%	0	0.0%
Group Care	1	0.5%	1	0.1%	0	0.0%
<b>TOTAL</b>	<b>823</b>	<b>100.0%</b>	<b>786</b>	<b>100.0%</b>	<b>655</b>	<b>100.0%</b>

**FY 2011-12 Discharge Placement (Top 7)**



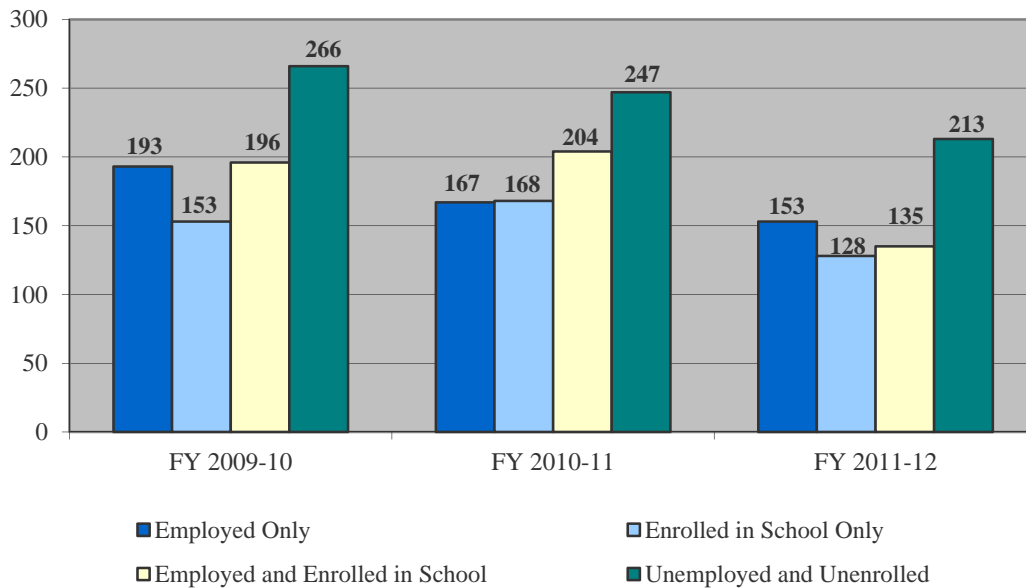
<sup>1</sup>Includes: One Parent, Both Parents, Parent and Step-Parent, Step-Parent or Guardian

<sup>2</sup>Mental Health/Drug Alcohol

## DISCHARGE TRENDS

DISCHARGED YOUTH	FY 2009-10		FY 2010-11		FY 2011-12	
	N	%	N	%	N	%
<b>JOB/ SCHOOL STATUS AT DISCHARGE</b>						
Employed Only	193	23.5%	167	21.2%	153	23.4%
Enrolled in School Only	153	18.6%	168	21.4%	128	19.5%
Employed and Enrolled in School	196	23.8%	204	26.0%	135	20.6%
Unemployed and Unenrolled	266	32.3%	247	31.4%	213	32.5%
Data Not Available	15	1.8%	0	0.0%	26	4.0%
<b>TOTAL</b>	<b>823</b>	<b>100.0%</b>	<b>786</b>	<b>100.0%</b>	<b>655</b>	<b>100.0%</b>

**Job/School Status at Parole Discharge**



DISCHARGED YOUTH	FY 2009-10		FY 2010-11		FY 2011-12	
	N	%	N	%	N	%
<b>PAROLE ADJUSTMENT AT DISCHARGE</b>						
Satisfactory to Excellent	473	57.5%	458	57.5%	382	58.3%
Poor to Unsatisfactory	278	33.8%	270	33.8%	234	35.7%
Not on Parole at Time of Discharge <sup>1</sup>	50	6.1%	36	6.1%	33	5.0%
Data Not Available	22	2.7%	22	2.7%	6	0.9%
<b>TOTAL</b>	<b>823</b>	<b>100.0%</b>	<b>786</b>	<b>100.0%</b>	<b>655</b>	<b>100.0%</b>

<sup>1</sup>Youth may discharge directly to adult corrections, or directly from a DYC facility or program prior to parole being granted.



# COMMITMENT POPULATION BY REGION\*

## DEMOGRAPHIC TRENDS

**Fiscal Year 2011-12**

	CENTRAL			NORTHEAST			SOUTHERN			WESTERN		
	New <sup>1</sup>	ADP	LOS (months)	New <sup>1</sup>	ADP	LOS (months)	New <sup>1</sup>	ADP	LOS (months)	New <sup>1</sup>	ADP	LOS (months)
<b>GENDER</b>												
Male	188	354.4	19.0	133	222.7	17.1	94	183.1	19.8	45	86.8	16.9
Female	28	54.5	18.9	26	39.7	14.4	12	24.4	20.2	7	17.5	17.7
<b>TOTAL</b>	<b>216</b>	<b>408.9</b>	<b>18.9</b>	<b>159</b>	<b>262.4</b>	<b>16.8</b>	<b>106</b>	<b>207.5</b>	<b>19.8</b>	<b>52</b>	<b>104.3</b>	<b>17.0</b>
<b>ETHNICITY</b>												
Anglo-American	71	141.9	18.4	80	117.4	16.7	48	86.5	22.3	32	65.3	17.5
African-American	52	114.7	19.0	5	21.2	18.8	17	46.1	21.4	4	3.2	23.7
Hispanic/Latino	88	141.5	19.5	72	118.0	16.6	36	67.9	16.1	13	20.4	14.8
Native American	1	3.9	28.0	0	0.4	16.3	1	1.3	21.8	2	10.5	20.0
Asian-American	2	5.6	17.4	1	2.9	0.0	1	2.4	22.9	0	1.0	0.0
Other	2	1.4	0.0	1	2.5	19.7	3	3.3	23.0	1	3.9	0.0
<b>AGE<sup>2</sup></b>												
11 Years	0	0.0	36.1	0	0.0	N/A	0	0.0	N/A	0	0.0	N/A
12 Years	0	0.0	N/A	1	0.0	43.1	0	0.0	N/A	0	0.0	N/A
13 Years	3	0.0	38.0	4	0.9	27.8	2	1.1	49.0	1	1.0	15.2
14 Years	17	3.6	24.4	4	3.5	22.8	8	2.1	23.3	4	3.4	20.2
15 Years	36	19.9	22.8	22	5.7	15.8	14	15.4	24.0	10	5.0	17.8
16 Years	60	60.5	18.2	44	36.2	16.8	30	19.0	23.0	18	13.0	16.9
17 Years	75	91.4	16.7	58	53.4	15.9	31	36.5	15.6	14	36.3	16.3
18 Years	23	122.6	16.9	20	94.1	14.4	20	63.3	15.6	5	24.1	12.2
19 Years and Older	2	111.0	17.5	6	68.6	16.6	1	70.1	22.2	0	21.6	12.0
Average Age at Commitment:	16.7 Years			17.0 Years			16.9 Years			16.6 Years		
<b>SENTENCE TYPE</b>												
Non-Mandatory	172	319.1	18.7	79	129.5	15.3	77	160.6	19.2	27	51.0	16.7
Mandatory	31	52.1	20.6	41	83.3	18.4	23	32.3	23.5	10	24.9	17.5
Repeat	9	23.0	20.1	33	32.8	18.8	5	8.8	17.4	13	25.2	17.3
Violent	1	3.6	12.8	1	2.3	12.3	0	1.9	0.0	0	1.0	0.0
Aggravated	3	10.9	36.1	4	13.4	29.2	1	3.9	52.1	2	2.3	0.0

\*Regional totals reported here may differ slightly from those in the Annual SB94 Report due to the definition of Region. Region is defined here by active client caseloads (i.e., the region in which the client was served). When reporting information by Judicial District (JD), region is defined by the JD in which the client was committed, and subsequently, are a sum of their respective judicial districts.

<sup>1</sup>Indicates new commitments.

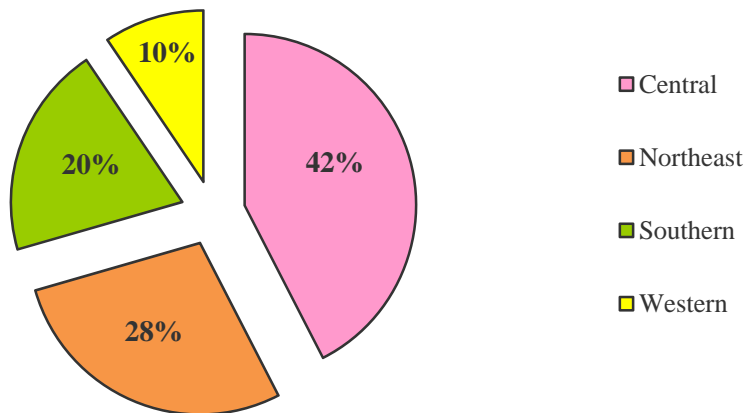
<sup>2</sup>Actual counts and LOS for each age category correspond to age at commitment. ADP figures for each age category are based on the youth's age on the last day of the fiscal year.

# DISCHARGES BY REGION

Fiscal Year 2011-12

	CENTRAL		NORTHEAST		SOUTHERN		WESTERN	
	N	%	N	%	N	%	N	%
DISCHARGED YOUTH								
DISCHARGE PLACEMENT								
Parents <sup>1</sup>	119	42.8%	83	45.1%	48	36.6%	30	48.4%
Relative	47	16.9%	21	11.4%	25	19.1%	10	16.1%
Independent Living	31	11.2%	26	14.1%	21	16.0%	7	11.3%
Adult Jail/ Corrections	33	11.9%	20	10.9%	18	13.7%	6	9.7%
Friend	19	6.8%	9	4.9%	4	3.1%	1	1.6%
Transfer to Child Welfare	10	3.6%	4	2.2%	2	1.5%	0	0.0%
Unknown/Data Not Available	5	1.8%	5	2.7%	2	1.5%	0	0.0%
Other Placements	3	1.1%	4	2.2%	4	3.1%	2	3.2%
Institution (MH/DA <sup>2</sup> )	3	1.1%	4	2.2%	0	0.0%	0	0.0%
Deported	2	0.7%	5	2.7%	0	0.0%	0	0.0%
Residential Child Care Facility	2	0.7%	1	0.5%	1	0.8%	0	0.0%
Shelter Care (Short Term)	1	0.4%	1	0.5%	1	0.8%	0	0.0%
Spouse	2	0.7%	0	0.0%	2	1.5%	0	0.0%
Job Corps	0	0.0%	0	0.0%	0	0.0%	6	9.7%
Deceased	1	0.4%	0	0.0%	1	0.8%	0	0.0%
Adoptive Family	0	0.0%	0	0.0%	0	0.0%	0	0.0%
Foster Care Family	0	0.0%	1	0.5%	0	0.0%	0	0.0%
Group Care	0	0.0%	0	0.0%	0	0.0%	0	0.0%
Escape	0	0.0%	0	0.0%	2	1.5%	0	0.0%
<b>TOTAL</b>	<b>278</b>	<b>100%</b>	<b>184</b>	<b>100%</b>	<b>131</b>	<b>100%</b>	<b>62</b>	<b>100%</b>

**FY 2011-12 Percent of Discharged Youth by Region**



<sup>1</sup>Includes: One Parent, Both Parents, Parent and Step-Parent, Step-Parent or Guardian

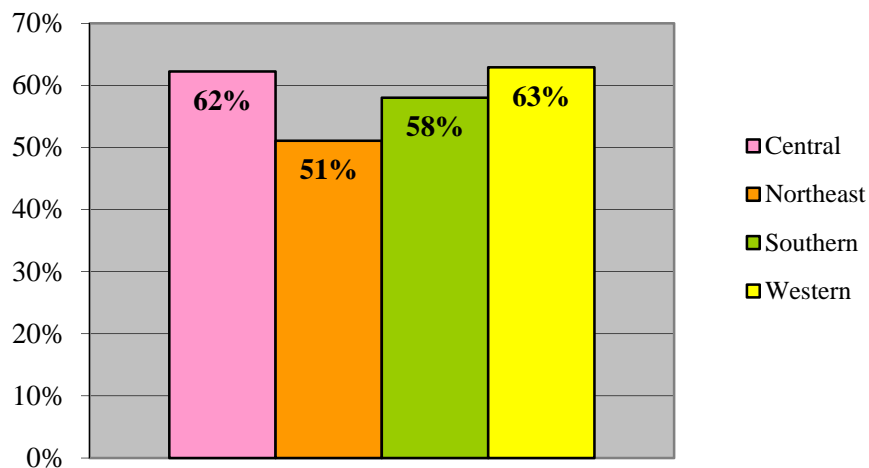
<sup>2</sup>Mental Health/Drug Alcohol

## DISCHARGES BY REGION

Fiscal Year 2011-12

	CENTRAL		NORTHEAST		SOUTHERN		WESTERN	
	N	%	N	%	N	%	N	%
<b>DISCHARGED YOUTH</b>								
<b>JOB/ SCHOOL STATUS<sup>1</sup></b>								
Employed Only	70	25.2%	50	27.2%	29	22.1%	4	6.5%
Enrolled in School Only	59	21.2%	38	20.7%	19	14.5%	12	19.4%
Employed and Enrolled in School	50	18.0%	25	13.6%	27	20.6%	33	53.2%
Unemployed and Unenrolled	94	33.8%	68	37.0%	42	32.1%	9	14.5%
Data Not Available	5	1.8%	3	1.6%	14	10.7%	4	6.5%
<b>TOTAL</b>	<b>278</b>	<b>100%</b>	<b>184</b>	<b>100%</b>	<b>131</b>	<b>100%</b>	<b>62</b>	<b>100.0%</b>
<b>PAROLE ADJUSTMENT</b>								
Satisfactory to Excellent	173	62.2%	94	51.1%	76	58.0%	39	62.9%
Poor to Unsatisfactory	90	32.4%	77	41.8%	44	33.6%	23	37.1%
Not on Parole at Time of Discharge	10	3.6%	13	7.1%	10	7.6%	0	0.0%
Data Not Available	5	1.8%	0	0.0%	1	0.8%	0	0.0%
<b>PROGRAM TYPE</b>								
	<b>LOS (Months)</b>							
Secure	7.8		7.2		11.1		9.3	
Staff Supervised	8.4		5.9		6.5		5.2	
Community Residential	2.6		3.4		2.2		1.6	
Total Commitment	18.9		16.8		19.8		17.0	
Parole	7.3		6.5		6.9		6.9	
Total Commitment & Parole	26.2		23.2		26.8		23.8	

**'Satisfactory to Excellent' Parole Adjustment Rating at Discharge by Region**

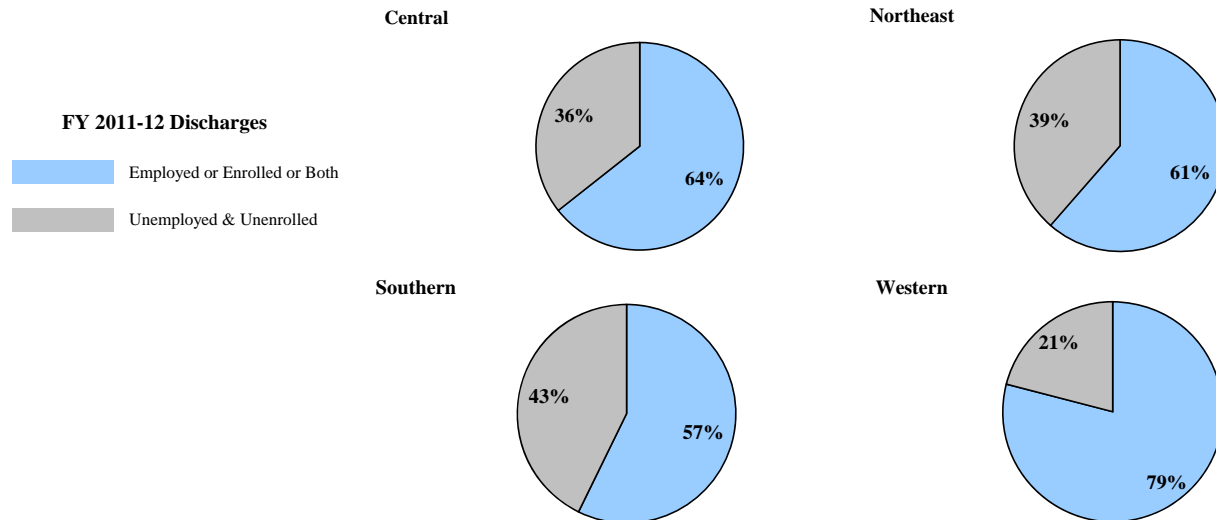


<sup>1</sup>Regional trends on this factor are shown on the following page.

**DISCHARGE TRENDS BY REGION**

**Employment and School Enrollment 3-Year Trends**

REGION			Job/School Status					Job/School Status <sup>1</sup>		TOTAL DISCHARGES
			Employed Only	Enrolled in School Only	Employed and Enrolled in School	Unemployed and Unenrolled	Data Not Available	Employed or Enrolled or Both <sup>2</sup>	Unemployed and Unenrolled	
Central	FY 11-12	N	70	59	50	94	5	179	99	278
		%	25.2%	21.2%	18.0%	33.8%	1.8%	64.4%	35.6%	
	FY 10-11	N	63	82	66	147	0	211	147	358
		%	17.6%	22.9%	18.4%	41.1%	0.0%	58.9%	41.1%	
	FY 09-10	N	87	51	86	118	5	211	123	347
		%	25.1%	14.7%	24.8%	34.0%	1.4%	58.9%	41.1%	
Northeast	FY 11-12	N	50	38	25	68	3	113	71	184
		%	27.2%	20.7%	13.6%	37.0%	1.6%	61.4%	38.6%	
	FY 10-11	N	73	50	36	59	0	159	59	218
		%	33.5%	22.9%	16.5%	27.1%	0.0%	72.9%	27.1%	
	FY 09-10	N	64	66	32	74	1	159	75	237
		%	27.0%	27.8%	13.5%	31.2%	0.4%	72.9%	27.1%	
Southern	FY 11-12	N	29	19	27	42	14	75	56	131
		%	22.1%	14.5%	20.6%	32.1%	10.7%	57.3%	42.7%	
	FY 10-11	N	25	22	56	31	0	103	31	134
		%	18.7%	16.4%	41.8%	23.1%	0.0%	76.9%	23.1%	
	FY 09-10	N	33	22	45	51	7	103	58	158
		%	20.9%	13.9%	28.5%	32.3%	4.4%	76.9%	23.1%	
Western	FY 11-12	N	4	12	33	9	4	49	13	62
		%	6.5%	19.4%	53.2%	14.5%	6.5%	79.0%	21.0%	
	FY 10-11	N	6	14	46	10	0	66	10	76
		%	7.9%	18.4%	60.5%	13.2%	0.0%	86.8%	13.2%	
	FY 09-10	N	9	14	33	23	2	66	25	81
		%	11.1%	17.3%	40.7%	28.4%	2.5%	86.8%	13.2%	

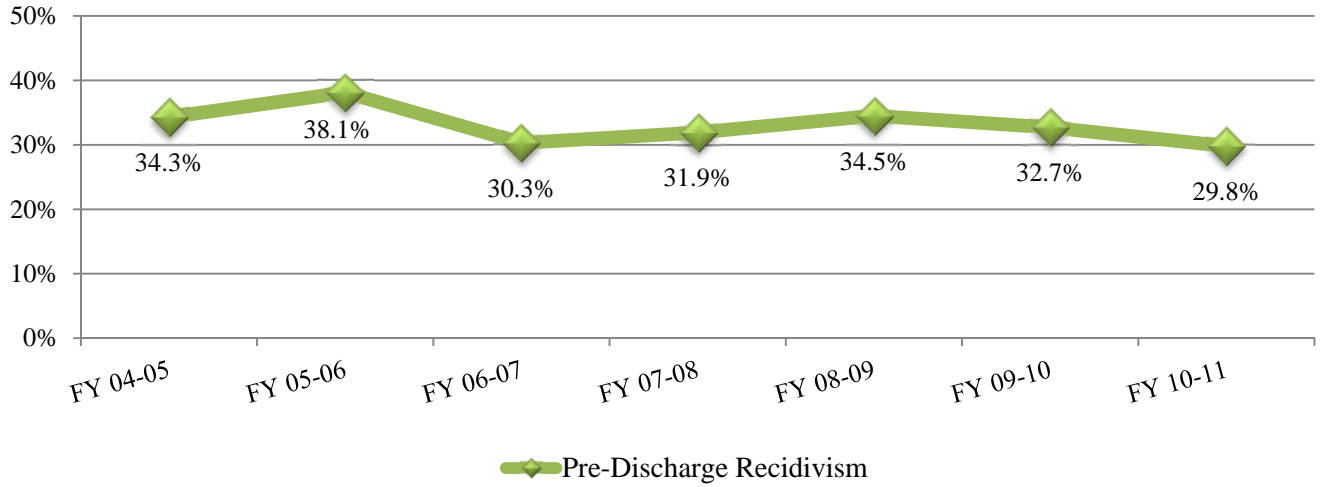


<sup>1</sup>This breakdown excludes missing data.

<sup>2</sup>Includes: The sum of Employed Only, Enrolled in School Only, and Employed and Enrolled in School.

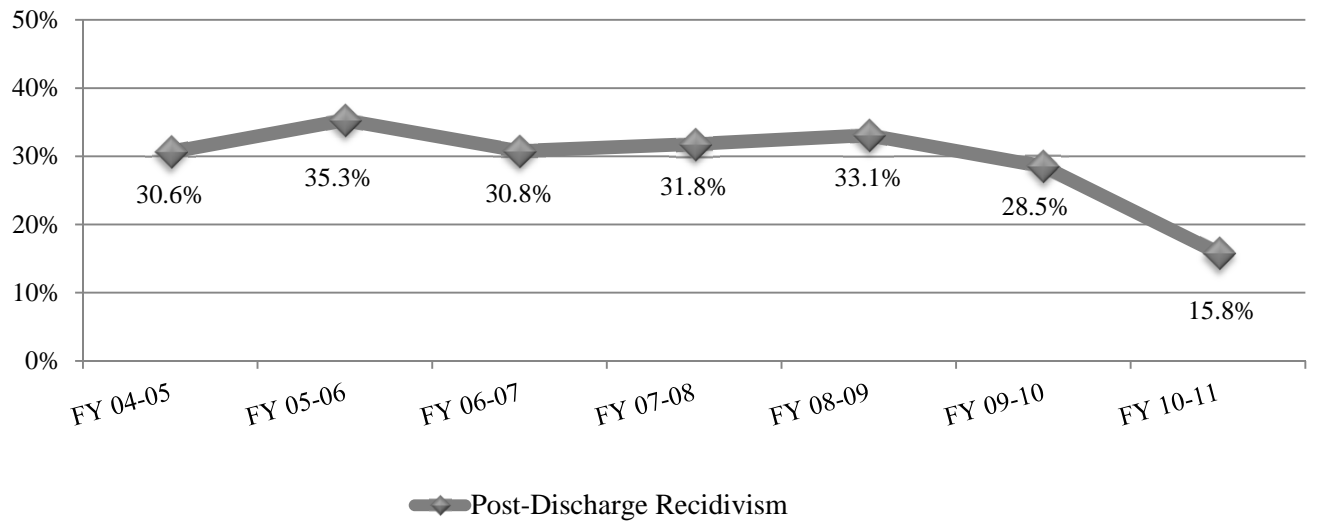
# RECIDIVISM TRENDS

## Pre-Discharge Recidivism Rates FY 2004-05 through FY 2010-11



Over the past seven years, pre-discharge recidivism rates have ranged from 29.8% (FY 2010-11) to 38.1% (FY 2005-06). This year's pre-discharge recidivism rate, 29.8%, is the lowest rate in the seven year period.

## Post-Discharge Recidivism Rates FY 2004-05 through FY 2010-11



Post-discharge recidivism rates declined for FY 2010-11 discharges. The decline is significantly less than the FY 2009-10 discharge rate. When compared to other states that measure juvenile recidivism in a similar fashion, Colorado, North Dakota, and Missouri are the three lowest rates in the nation.

## Glossary of Terms Used

**Disclaimer:** *These definitions are provided for quick reference purposes only. Please refer to the Colorado Revised Statutes for more complete definitions of legal categories and conditions.*

**Adjudication** – The result of an adjudicatory hearing in which the court determines that it has been proven beyond a reasonable doubt that a juvenile has committed a delinquent act, or that a juvenile has pled guilty to committing a delinquent act.

**Aggravated Offender (Sentence Type)** – see *Sentencing Special Offenders*.

**Assessment** - Youth committed to DYC are assessed to determine a youth's classification and risk level, as well as needs for appropriate services, placement and program referral.

**Average Daily Population (ADP)** - The average number of youth present in a facility or program during the reporting period.

**Colorado Client Assessment Record (CCAR)** - An assessment tool used to evaluate mental health treatment needs.

**Colorado Juvenile Risk Assessment (CJRA)** - An assessment tool used to determine risk of recidivism. The comprehensive, empirically validated risk assessment allows the Division to identify and respond to the criminogenic factors directly contributing to youth offending behavior.

**Community Accountability Program** – Youth could be sentenced to the Community Accountability Program (CAP) as a condition of probation, after the cessation of the Regimented Juvenile Training Program. The sentence included a 60-day residential program, focusing on restorative justice and youth skill development. The residential phase was followed by an intensive aftercare program for 120 days, or until the period of probation expires. The aftercare phase, also based on a restorative justice model, focused on continued service delivery to youth and families as well as reintegration into the community. Funding for CAP was eliminated in the FY 2002-03 Supplemental Reduction.

**Clients Served: Commitment & Parole** - The total number of youth served in a particular program during the reporting period. Total clients served in a given category (e.g. secure or staff-supervised) represent unduplicated counts of clients served in those categories. Since youth can be served in more than one type of program in the course of a year, the total clients served in a particular category will not equal the sum of the clients served in each program.

**Clients Served: Detention** - The total number of youth served in a particular program during the reporting period. Total clients served in a facility or program (e.g. Adams YSC) represents unduplicated counts of clients served in those facilities. Since the same youth can have multiple admissions to detention and be served in more than one particular facility in the course of a year, the total clients served in all facilities will not equal the sum of the clients served in each facility.

**Commitment** - Commitments are dispositions of juvenile cases resulting in the transfer of legal custody to the Department of Human Services by the court as a result of an adjudicatory hearing on charges of delinquent acts committed by the youth.

***Commitment Sentence Type*** - Juveniles who have been adjudicated delinquent and committed to the Division of Youth Corrections can be given either non-mandatory or mandatory sentences. Mandatory sentences require that a youth spend a specified minimum amount of time in out-of-home placement and can include repeat and violent offenders. Juveniles can also be sentenced as aggravated offenders (Section 19-2-601, C.R.S.).

***Community Residential Placement*** – DYC contracts with a number of private vendors to provide community-based programs to youth presenting the lowest risk of re-offending and youth transitioning from more secure programs.

***Detention*** - The custodial status of youth who are being confined or supervised after arrest or while awaiting the completion of judicial proceedings. Detention youth are served in secure state-operated or staff-secure (privately-operated) facilities. Some detention youth are served in non-residential, community-based supervision programs.

***Detention Admission*** - Each admission to detention for temporary custody of youth is tracked independently. In contrast to unduplicated counts of clients served in detention, one youth can have multiple admissions for a single incident. For example, if a youth is admitted to detention on a pretrial basis (preadjudicated) and released, a later sentencing to detention on the original charge would count as a separate admission, even though it is the same youth and the same incident. Likewise, if the youth serves the sentence on weekends, each weekend admission counts as a separate admission.

***Detention Capacity Strain*** – Percentage of days where detention bed usage is at or above 90% of capacity.

***Detention Maximum Bed Usage*** – Represents the maximum number of youth in detention at any given point during the day.

***Detention Screen*** - Refers to Colorado SB94 Juvenile Detention Screening and Assessment Guide (JDSAG), which is a screening guide designed to enhance consistency in the detention screening process.

***Detention Sentence*** - The court imposed sanction of confinement to a detention facility as a disposition of a delinquency adjudication. Major sentence types include probation sentences, traffic sentences, handgun sentences, municipal sentences, game and fish sentences, contempt sentences, and non-probation sentences for a delinquent act.

***Discharge*** - Time at which youth have completed their commitment and are no longer under the supervision and custody of the Division; most often directly following the completion of the parole period.

***Initial Commitment Classification Instrument (ICCI)*** - An objective commitment classification instrument is administered during assessment to guide the placement decisions concerning the type of commitment program most suitable for individual youth given the severity of their commitment offense coupled with the risk of re-offending.

***Interstate Compact on Juveniles (ICJ)*** - A cooperative program amongst states and jurisdictions that provides for the uniform interstate supervision of juveniles on probation or parole.

***Length of Service (LOS): Commitment*** - All commitment LOS figures are measured in months and are calculated for those discharged youth who spent time in the program for which LOS is reported (e.g., assessment, secure, staff secure, and community programs) prior to parole.

***Length of Service (LOS): Parole*** - The amount of time spent on parole status. Parole LOS is measured in months and is based on discharged youth.

***Length of Service (LOS): Commitment & Parole*** - The average amount of time in DYC custody (sentence start date to discharge date including parole) for all youth discharged from DYC during the reporting period, not including escape time.

***Length of Stay (LOS): Detention*** - The amount of time spent in a detention facility or program during the time period. All detention LOS figures are measured in days and are based on released youth.

***Mandatory Sentence Offender***- See *Sentencing Special Offenders*.

***Municipal Sentence*** - Detention sentence imposed by a municipal court for violation of municipal ordinances.

***New Commitment*** - Commitment of youth who were not previously committed, or who were previously committed but had been discharged from DYC.

***Non-Mandatory Sentences*** - These sanctions involve no minimum out-of-home sentence length. The maximum sentence length cannot exceed 24 months. The Juvenile Parole Board determines release from commitment to parole status.

***Other Residential*** – Placements include Job Corps, Group Homes, Hospitalization, etc.

***Parole*** - The status of an offender conditionally released from a residential setting by discretion of the Juvenile Parole Board. Colorado juvenile offenders have a mandatory minimum parole length of 6 months. While on parole a youth is placed under the supervision of a parole officer and is required to observe conditions of release set by the parole officer and the Juvenile Parole Board.

***Parole Revocation*** - The administrative action of the Juvenile Parole Board, which removes a youth from parole status in response to a violation of lawfully required conditions of parole, including the prohibition against commission of a new offense.

***Parole Suspension*** - The administrative action of the Juvenile Parole Board, which removes a youth from parole status in response to a violation of lawfully required conditions of parole, including the prohibition against commission of a new offense. Reconsideration of parole must occur within 90 days on a date determined by the Juvenile Parole Board.

***Parole Violation*** – Actions by a parolee that do not conform to the conditions of parole.



***Preadjudicated*** - The legal status of youth pending delinquency adjudication decisions. Often these youth are referred to as pre-trial youth since they are generally admitted to detention pending some court action. This category also includes youth who are serving a sentence, such as probation, on a prior delinquency adjudication and who are in detention pending a new court action.

***Prior Adjudications*** - Adjudications that occurred prior to the current detention or commitment event.

***Prior Out-of-home Placements*** - Placements in Social Services or DYC residential programs or other treatment programs prior to the current commitment sentence.

***Recidivism (Post-Discharge)*** – A filing for a new felony or misdemeanor offense that occurred within one year following discharge from the Division of Youth Corrections.

***Recidivism (Pre-Discharge)*** - A filing for a new felony or misdemeanor offense that occurred prior to discharge (while the youth is under DYC supervision) from the Division of Youth Corrections.

***Repeat Offender*** - see *Sentencing Special Offenders*.

***Regional Management Structure*** - Decentralized DYC management structure comprised of four geographic regions in the state.

***Residential Programs*** - Programs that provide 24-hour care.

***Secure Residential Facility*** – A facility with physical security features such as locked doors, sally-ports, and correctional fencing.

***Sentencing Special Offenders*** (see Section 19-2-908, C.R.S.)

- a. ***Mandatory Sentence Offender*** – These sanctions specify a minimum time period of up to 24 months or less during which a youth must be in an out-of-home placement.
- b. ***Repeat Offender (Sentence Type)*** - A 'repeat' sentence type can be imposed on a juvenile who has been previously adjudicated a juvenile delinquent, and is adjudicated a juvenile delinquent for a delinquent act that constitutes a felony, or if his or her probation is revoked for a delinquent act that constitutes a felony. The court may or may not designate a minimum sentence length.
- c. ***Violent Offender (Sentence Type)*** - A juvenile may be sentenced as a violent offender if he or she is adjudicated a juvenile delinquent for a delinquent act that constitutes a crime of violence as defined in Section 16-11-309(2), Colorado Revised Statutes.
- d. ***Aggravated Offender (Sentence Type)*** – These sanctions specify a time period of three to seven years, during which time a youth must remain in the custody of the Department of Human Services. Contingent upon court approval, youth may be eligible for non-secure placement, parole, or transfer to the Department of Corrections (adult corrections).

***Staff-Supervised Residential Facility*** – Privately owned and operated, staff-supervised facilities provide 24-hour line of sight supervision of youth.

***State Owned / Privately Operated Programs*** - Detention or commitment programs which are administered by contract service providers in NYC owned facilities.

***State Owned / State Operated Programs*** - Detention or commitment programs which are administered by NYC employees in NYC owned facilities.

***Violent Offender (Sentence Type)*** – see *Sentencing Special Offenders*.