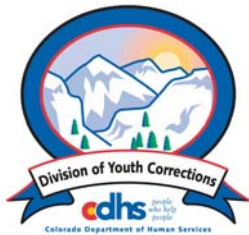


Fiscal Year 2007-2008

Management Reference Manual



**Colorado Department of Human Services**  
**Office of Children, Youth and Family Services**  
**Division of Youth Corrections**

---

*Working with Colorado Communities to Achieve Justice*

April 2009

This manual provides the information most often requested on DYC client populations. Any questions concerning the data presented in this manual may be directed to the Research and Evaluation Unit, Division of Youth Corrections, 4255 S. Knox Court, Denver, CO 80236, or [Kelli.Burmeister@state.co.us](mailto:Kelli.Burmeister@state.co.us)

**Colorado Department of Human Services  
Division of Youth Corrections**



April, 2009

<http://www.cdhs.state.co.us/dyc/Research.htm>

# STATE OF COLORADO



**Colorado Department of Human Services**

*people who help people*

**OFFICE OF CHILDREN, YOUTH AND FAMILY SERVICES**  
George Kennedy, Deputy Executive Director

**DIVISION OF YOUTH CORRECTIONS**  
John Gomez, Director

4255 South Knox Court  
Denver, Colorado 80236  
Phone 303-866-7345  
FAX 303-866-7344  
[www.cdhs.state.co.us](http://www.cdhs.state.co.us)



Bill Ritter, Jr.  
Governor

Karen L. Beye  
Executive Director

The Division of Youth Corrections (DYC) is pleased to release its FY 2007-08 Management Reference Manual. This reference manual is designed to provide population information and other trend data for youth served by DYC. This report primarily focuses on detained youth, committed youth, and youth released to the community on parole.

FY 2007-08 was the fourth year that the Division has operated under statutory limits on the total detention population; whereas the detention population cannot exceed 479 youth at any time. As a result of the provisions of SB 03-286, detention Average Daily Population (ADP) is still significantly lower than it had been before the statutory change. Detention ADP is 18% lower than it was five years ago. At 408.8, it is down 1.5% from the previous fiscal year.

Despite steady growth trends in the commitment population throughout the 1990s and the first half of this decade, recent population data has observed a reversal of this trend. There was a ten percent reduction in the Commitment ADP compared to fiscal year 2006-07. The ADP for the Committed Population for FY 2006-07 and FY 2007-08 was 1424.9 and 1287.9, respectively.

The parole population experienced a three-percent decrease in ADP for FY 2007-08. While parole ADP has only witnessed an increase two times over the last six years, the Division anticipates that the parole population will grow as a consequence of having more youth benefit from the services made available through the Continuum of Care Initiative.

Thank you for your interest in the Division of Youth Corrections. Additional information is available on the Division's web site at <http://www.cdhs.state.co.us/dyc>.

Sincerely,

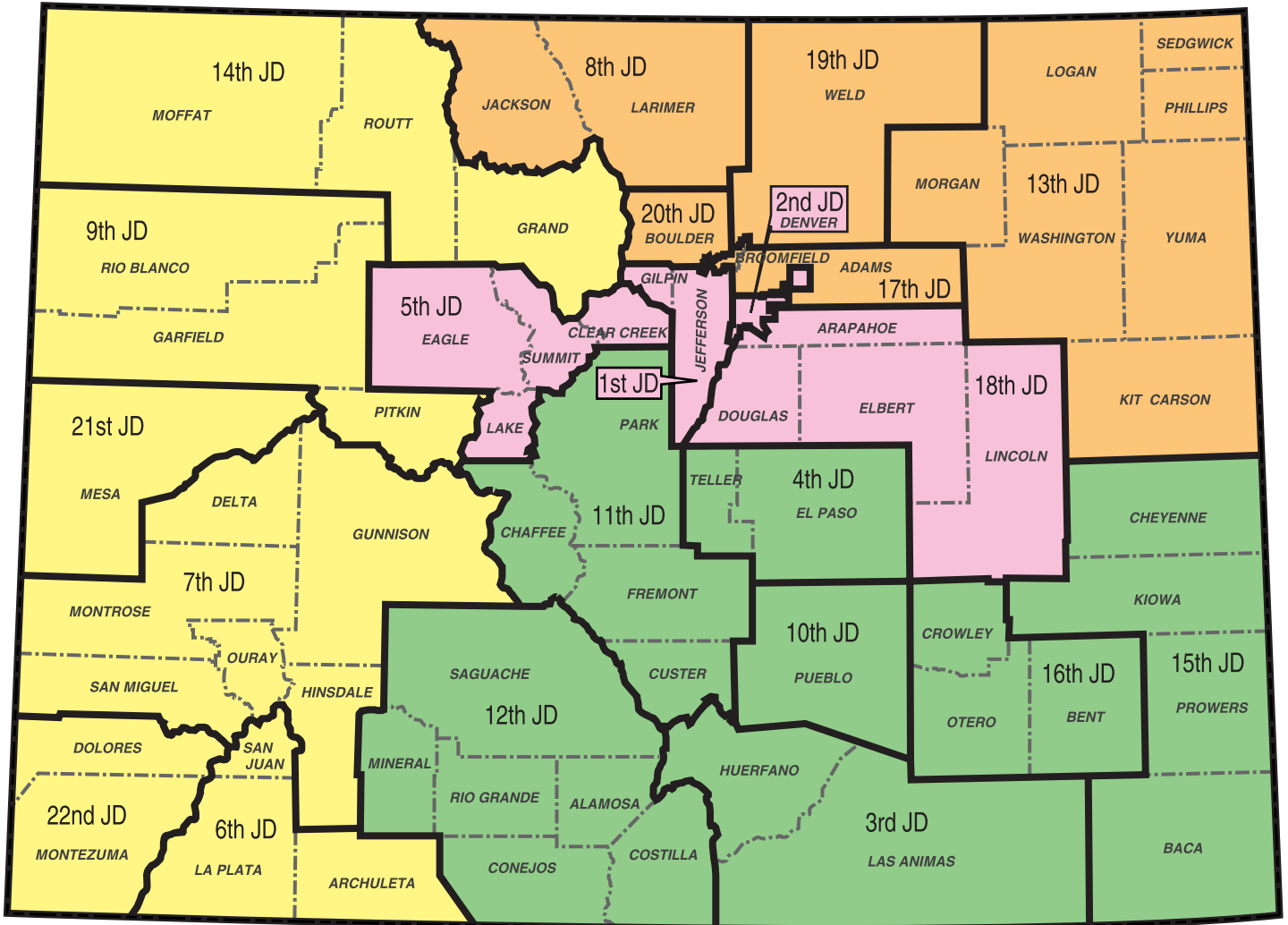
A handwritten signature in black ink that reads "John Gomez". The signature is written in a cursive, flowing style.

John Gomez  
Director, Division of Youth Corrections

Division of Youth Corrections

Catchment Areas/DYC Regional Management Structure

Central Region, Northeast Region, Southern Region, and Western Region



**Management Reference Manual  
Fiscal Year 2007-2008**

---

<b>Executive Summary</b>	i
<b>Section I: Colorado State Totals</b>	
Filtering Process to Detention	1
Filtering Process to Commitment	2
All Clients Population Data	3
<b>Section II: Detention Program Services</b>	
Detention Population Trends	4
Detention Population by Program	6
Detention Population Trends ADP by Program	7
Detention Demographic Trends	8
Detention Demographic Trends by Gender	10
Detention Overview by Region and Judicial District	11
<b>Section III: Commitment Program Services</b>	
Commitment Population Trends	12
Commitment Population by Program	14
Commitment Population Trends ADP	16
Commitment Demographic Trends	17
Commitment Demographic Trends by Gender	18
New Commitment Trends by Gender	19
Commitment Classification	21
Commitment Length of Stay Trends	22
Commitment Overview by Region and Judicial District	23
<b>Section IV: Parole Program Services</b>	
Parole Trends	24
Discharge Trends	25
<b>Section V: Regional Summaries</b>	
Commitment Demographic Trends	26
Discharge Trends	27
<b>Glossary of Terms</b>	Appendix

---

## **Fiscal Year 2007-08 Executive Summary**

The Management Reference Manual is designed to provide population information on youth served by the Division of Youth Corrections (DYC) during FY 2007-08 and other trend data. Section I contains statewide population information, while Sections II and III provide more detailed population data that describes the detained and committed populations respectively. Section IV contains the Division's parole data, and Section V contains regional summaries. A report summary is included below.

### **Detention:**

Senate Bill 03-286 was signed into law on May 1, 2003. This legislation established a 'cap' or limit of 479 on the number of State funded detention beds. This legislation was implemented October 1, 2003. The FY 2000-01 detention average daily population (ADP) was 583.0, but since implementation, under current state law, the detention population can never exceed 479. Each of the State's 22 judicial districts has been allocated a portion of the 479 beds. Statutory language provides that districts may borrow beds within an established 'catchment' area. Statutes also contain provisions for emergency release of detained youth in the event that a district is unable to borrow a bed.

FY 2007-08 was the fourth full year of operation under the cap. Detention ADP decreased 1.5% from FY 2006-07 to 408.8, which marks the second year of decline following 2 years of growth. The average Length of Stay (LOS) for a youth in detention remained relatively stable at 13.7 days in FY 2007-08, a decrease of 2.1% from last year's 14.0 days. There were 10,792 new admissions to detention. One year prior, new admissions were at an 18-year low. Declines in detention admissions were expected following the implementation of the statewide capping legislation. Prior to the cap, local jurisdictions were given substantial discretion as to which youth could be admitted into detention. Currently, local jurisdictions still have this level of discretion, but now it must be balanced by the reality of a finite number of allocated beds. As a result, detention is now experiencing a marked reduction in usage particularly in the admission of truants, status offenders, and other less serious offenders.

### **Commitment:**

In December 2007, Legislative Council Staff (LCS) and the Division of Criminal Justice (DCJ) released their FY 2007-08 projections. At that time, LCS and DCJ both projected substantial decreases in ADP, with DCJ predicting ADP levels lower than LCS. One of the expected outcomes of the Continuum of Care Initiative was the gradual reduction of commitment ADP as youth transition from commitment placements into the community on parole. The impact of the Continuum of Care is reflected in the decrease of commitment ADP for the past two years. The average daily population experienced a 28.5 decrease from FY 2005-06 to FY 2006-07, and then ADP decreased even more substantially, by 137.0 (-9.6%), in FY 2007-08. This population decrease may also be related to the decline in the number of new commitments for the past two fiscal years.

New commitments decreased by 4% to 795 during FY 2007-08. The new commitment rate also decreased to 15.0 committed youth per 10,000 Colorado youth, from 15.7

committed youth per 10,000 Colorado youth in FY 2006-07. For the past 10 years, the number of new commitments have fluctuated between 766 and 950 each year.

In FY 2007-08, the committed population of youth experienced ADP decreases across the board. *Assessment* ADP decreased by 24% to 51.3. The ADP in *secure* placement decreased by 7.5% to 480.4. The ADP of youth in *staff supervised* placement also experienced a decrease from 644.9 ADP to 581.5 ADP (10%). Similarly, the population of youth in *community* placements decreased 13%, to 149.3 ADP.

**Parole:**

The Legislative Council Staff (LCS) projected that the parole population would decrease in FY 2007-08, while the Division of Criminal Justice (DCJ) projected the parole population would rise. LCS projected the parole population would decrease 2.3% to 505 ADP. DCJ projected the parole population would increase 8.2% to 564.4 ADP. The actual data from the fiscal year reveals a parole ADP decrease to 509.4. This is a 2.5% decrease from 522.6 in FY 2006-07.

Parole populations may gradually increase because of the Division's Continuum of Care Initiative. As the Division begins to actively identify appropriate youth in committed placement and establish community-based services to address the youth's criminogenic needs, it is reasonable to expect that this initiative will yield more Parole Board referrals and ultimately an increased Parole ADP level.

Fiscal Year 2007-08 was the fourth full year following the implementation of Senate Bill 03-284, which shortened the mandatory parole length from nine to six months, effective May 1, 2003. However, since the passage of SB 03-284, the parole LOS has slightly exceeded the mandatory parole period of 6 months. For many high risk youth, the Parole Board has the statutory authority to extend parole for 90 days if determined to be "within the best interest of the juvenile and the public to do so"<sup>1</sup> or for an additional 15 months if there is a "finding of special circumstances" for youth adjudicated for certain offenses (e.g., violent offense, sex offenses, etc.)<sup>2</sup>. A decline was expected as a result of the legislation that reduced mandatory parole length of stay from nine to six months, and this decline did occur the two years directly following implementation. Later, in FY 2006-07, Parole LOS increased slightly to 6.8 months, and in FY 2007-08 has remained fairly even at 6.7 months.

---

<sup>1</sup> 19-2-1002 (5)(a)(I), C.R.S.

<sup>2</sup> 19-2-1002 (5)(a)(II), C.R.S.

*\*Data based on new admissions in FY 2007-08 are not representative of the total detention population.*

*\*Data based on new commitments in FY 2007-08 are not representative of the total committed population.*

## **I. STATE TOTALS FY 2007-08**

### **A. Juvenile Justice Filtering Process to Detention**

- There were 10,792 new admissions to DYC Detention during FY 2007-08. This represents 2.0% of the 10-17 year old Colorado population, and it represents 23.3% of Colorado's juvenile arrests.
- Admissions are back up from an 18-year low experienced last FY. Detention Admissions increased by 1.9%. The increase in FY 2007-08 disrupted a five-year trend of decline.

### **B. Juvenile Justice Filtering Process to Commitment**

- There were 795 new commitments to DYC during FY 2007-08. This represents 0.1% of the 10-17 year old Colorado population, and it represents 5.6% of Colorado's 14,091 juvenile filings.
- This commitment rate (15.0 youth per 10,000 youth in the Colorado population) has remained fairly constant for the past 10 fiscal years.

### **C. Clients Served<sup>3</sup>**

- There were 8,848 youth served in DYC programs during FY 2007-08, which reflects an unduplicated count of individual youth. There were 6,589 youth served in detention programs, 2,271 youth were served in commitment programs, and 1,431 youth were served in parole services.

### **D. DYC Population Summary**

- There was an ADP of 408.8 detained youth, which marks the second year of decline following 2 years of growth.
- There was an ADP of 1,287.9 committed youth, which is a 137.0 ADP decline from last year.
- Commitment ADP had increased steadily over the past 10 years; however, this is the second year of decline.
- There was an ADP of 509.4 paroled youth for FY 2007-08.
- There were 10,792 new admissions to detention, which is a 2% increase following the 18-year low experienced in FY 2006-07.
- There were 795 new commitments in FY 2007-08.

---

<sup>3</sup> Clients Served is an unduplicated count. Categorical totals are not a sum of individual program counts and are not available for all categories.



## **II. DETENTION POPULATION Trends and Characteristics**

### **A. Population Trends**

- Fiscal year 2007-08 was the fourth year operating under the statewide statutory cap of 479 youth. As a result of the provisions of SB 03-286, detention ADP is still much lower than it had been before the capping legislation. Detention ADP is 18% lower than it was five years ago. At 408.8, it is down 1.5% since last fiscal year.
- Detention Admissions are at 10,792, and are 23% lower than they were five years ago in FY 2002-03.
- Ninety-five percent of detained youth were held in State-Operated facilities, essentially the same percent as FY 2006-07. Since the detention cap was implemented, there has been a decreased reliance on Privately-Operated placements. Only 5% of this year's ADP was detained in a contracted secure or staff-secure facility.
- The average Length of Stay (LOS) for a youth in detention decreased slightly to 13.7 days, a decrease of 2.1% from last year's 14.0 days. It is 11% below what it was five years ago. A decrease in LOS was anticipated because of the detention cap, corresponding to the decrease in detention ADP.

### **B. Population Characteristics**

#### **1. Gender**

- Over the past three years the proportion of new admissions to detention by gender has remained fairly stable. In FY 2007-08, seventy-seven percent of new detention admissions were male and 23% were female.

#### **2. Ethnicity**

- Anglo-American youth (42%) have consistently represented the largest ethnic group in DYC detention facilities, followed by Hispanic / Latino youth (40%), and African-American youth (16%).

#### **3. Age**

- The average age at admission in FY 2007-08 was 16.1 years, slightly above what it had been for several years prior (16.0).
- The age distribution for FY 2007-08 is similar to that of FY 2006-07. Eighty percent of new admissions to detention were between the ages of 15 and 17 at the time of admission.

#### 4. Prior Admissions

- Sixty-four percent of the youth admitted to detention in FY 2007-08 had one or more prior detention admissions. This is the relatively the same percentage as last fiscal year, up 2%.

### III. COMMITMENT POPULATION

#### Trends and Characteristics

##### A. Population Trends

- The committed population experienced a decline across four categories. Commitment ADP experienced a 10% decrease since last fiscal year; clients served decreased by 14%; new commitments decreased by 4%; and commitment LOS decreased by 3%.

##### B. Population Characteristics<sup>4</sup>

###### 1. Gender

- The percentage of female new commitments increased from last year. Sixteen percent of new commitments were female for FY 2007-08, while 84% were male. In FY 2006-07 only 12% were female.
- Females still only represented 12% of the average daily population, while males represented 88% of the ADP.

###### 2. Ethnicity

- The majority of new commitments have historically been Anglo, Hispanic/Latino, and African American youth, respectively. This holds true for FY 2007-08. This year's ethnic distribution was 42.5% Anglo, 35.6% Hispanic and 19.6% African American.

###### 3. Age

- The average age at commitment has been slowly increasing over the last three fiscal years. The average age at commitment for FY 2007-08 was 16.7 years, approximately three and half months older than youth committed just two fiscal years prior (16.4 years).
- Thirty-five percent of youth were 17 years old, 29% were 16 years old, and 19% were 15 years old. These proportions have not changed significantly in several years.

---

<sup>4</sup> Refers to youth who were newly committed during FY 2007-08, unless otherwise specified.

#### 4. Other Characteristics

- Twenty-nine percent of newly committed youth received mandatory sentences. Mandatory sentences include repeat offenders, violent offenders and aggravated offenders as well as sentences mandated by the courts. Repeat offenders accounted for 6% of new commitments in FY 2007-08.
- The average age at first adjudication was 14.4 years for both males and females.
- Sixty-nine percent of youth had one or more out-of-home placements. This is a 2% increase from FY 2006-07.
- Thirty-four percent of males committed in FY 2007-08 had no prior out-of-home placements, while only 15% of females committed in FY 2007-08 had no prior out-of-home placements.
- The percent of females with a history of running away increased from 88% in FY 2006-07 to 91% in FY 2007-08. The percent of males with a runaway history increased as well to 61% from 58%.
- The percent of newly committed youth in need of treatment level substance abuse services remained the same as the last two years at approximately 60%. The female population in need of treatment has increased slightly from 66% to 67%, and the male treatment population remained the same at 59%.
- Seventy-two percent of newly committed youth had one or more prior adjudications, which is lower than in FY 2006-07 (76%). Fewer males have no prior adjudications (25%) than females (39%).
- Sixty-three percent of youth were committed for felony offenses in FY 2007-08. This is only a slight increase from 61% last FY, and 60% the two fiscal years prior.
- In regards to mental health needs during the FY 2007-08, the percent of youth assessed with “High-Moderate to Severe” needs was 22%, while 78% of youth newly committed had “Low Moderate/None to Slight” assessed mental health needs. A larger percentage of females assess at the “High-Moderate to Severe” level (25%) in comparison to males (21%).

#### **IV. PAROLE POPULATION**

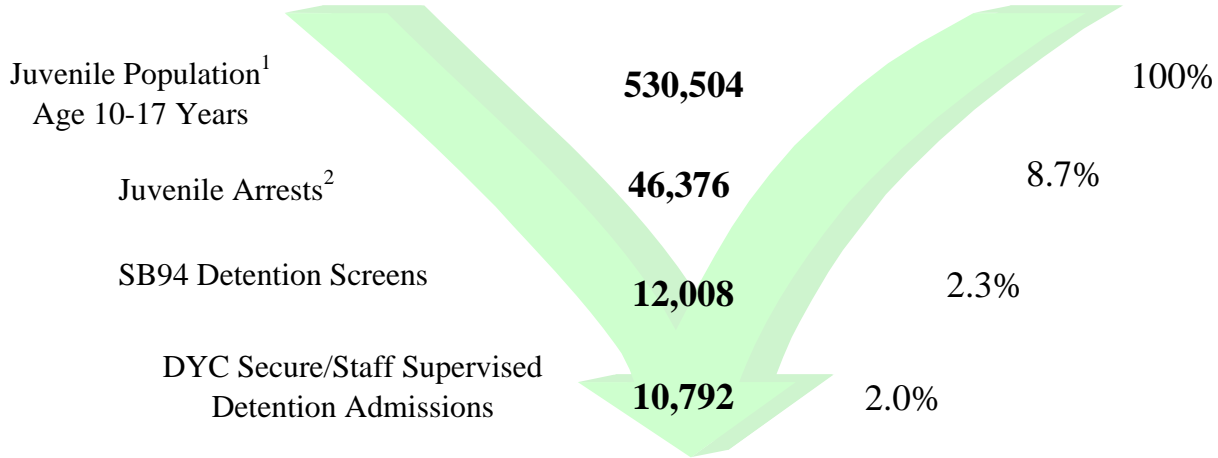
##### **Trends and Characteristics**

- Parole ADP experienced a decrease in FY 2007-08, coming in at 509.4. This represents a 2.5% decrease from last year’s parole ADP of 522.6.
- Parole LOS decreased slightly from 6.8 months in FY 2006-07 to 6.7 in FY 2007-08.
- Eighty-three percent of youth were discharged from parole into their homes (including foster homes, step parents, spouses, single parents, etc) during FY 2007-08. Ten percent discharged directly into Adult Jail/ Corrections. This statistic has decreased slightly over the past couple of years; from 12.9% in FY 2005-06 to 10.6% in FY 2006-07 to 9.7% last fiscal year.

**Colorado State Totals**

**Fiscal Year 2007-2008**

**Juvenile Justice Filtering Process to Detention**



	FY2003-04	FY2004-05	FY2005-06	FY2006-07	FY2007-08
Age 10-17 population <sup>1</sup>	520,797	518,930	521,508	525,713	530,504
Juvenile Arrests <sup>2</sup>	45,836	48,105	47,596	44,985	46,376
Arrests as % of population	8.8%	9.3%	9.1%	8.6%	8.7%
SB94 Detention Screens	12,692	12,607	12,453	11,842	12,008
Detention Admissions	11,148	10,970	10,698	10,591	10,792
Admissions as % of Population	2.1%	2.1%	2.1%	2.0%	2.0%

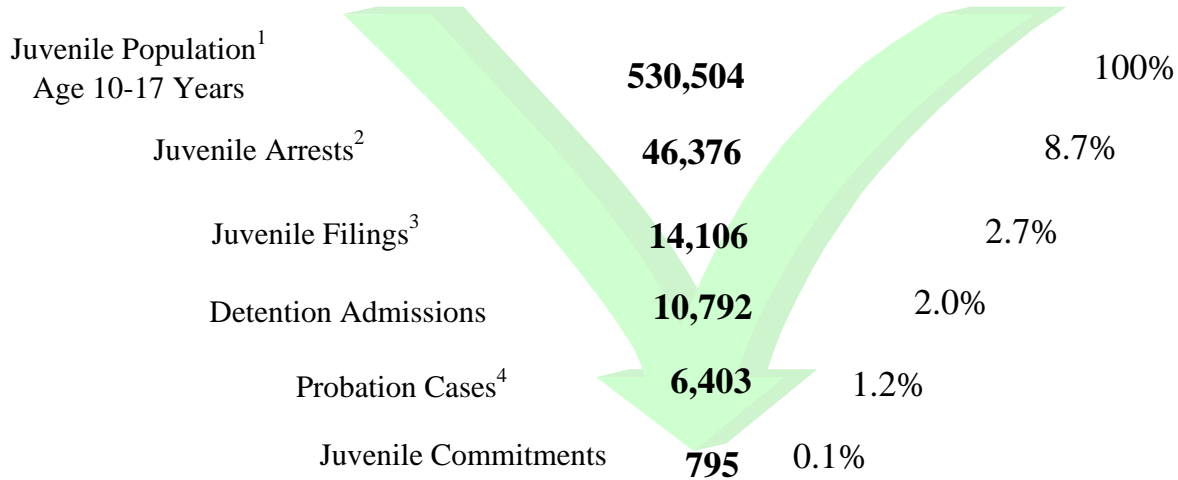
<sup>1</sup>Colorado State Department of Local Affairs. Population data are reported for calendar years. Population estimates are based upon the 2000 census (<http://www.dola.state.co.us/cedis.html>).

<sup>2</sup>Colorado Bureau of Investigations, *Crime in Colorado 2007*.

# Colorado State Totals

## Fiscal Year 2007-2008

### Juvenile Justice Filtering Process to Commitment



	FY2003-04	FY2004-05	FY2005-06	FY2006-07	FY2007-08
Age 10-17 Population <sup>1</sup>	520,797	518,930	521,508	525,713	530,504
Juvenile Arrests <sup>2</sup>	45,836	48,105	47,596	44,985	46,376
Arrests as % of population	8.8%	9.3%	9.1%	8.6%	8.7%
Juvenile Delinquency Filings <sup>3</sup>	15,981	15,156	14,926	14,389	14,106
Juvenile Detention Admissions	11,148	10,970	10,698	10,591	10,792
Number of New Probation Cases (reg. & ISP) <sup>3</sup>	7,222	6,543	6,826	6,510	6,403
Number of Commitments	924	950	933	827	795
Commitments as % of Population	0.2%	0.2%	0.2%	0.2%	0.1%

<sup>1</sup>Colorado State Department of Local Affairs. Population data are reported for calendar years. Population estimates are based upon the 2000 census (<http://dola.colorado.gov/demog/demog.cfm>).

<sup>2</sup>Colorado Bureau of Investigations, *Crime in Colorado 2007*.

<sup>3</sup>Colorado Judicial Branch FY 2007-08.

<sup>4</sup>Colorado Judicial Branch FY 2007-08.

**ALL CLIENTS POPULATION DATA**

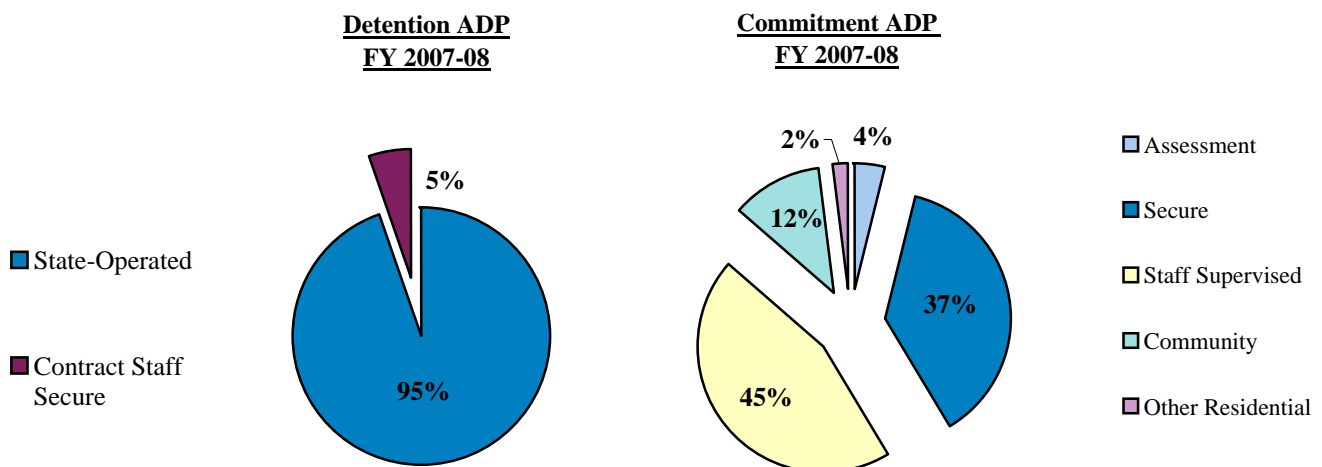
**Fiscal Year 2007-2008**

<b>DETAINED YOUTH</b>	<b>Clients Served<sup>1</sup></b>	<b>New Admits</b>	<b>ADP</b>	<b>LOS</b>
State-Operated	6,339	10,189	387.2	13.7 days
Contract Staff Secure	494	603	21.6	13.3 days
<b>Total Detained</b>	<b>6,589</b>	<b>10,792</b>	<b>408.8</b>	<b>13.7 days</b>

<b>COMMITTED YOUTH</b>	<b>Clients Served<sup>1</sup></b>	<b>ADP</b>	<b>LOS</b>
Assessment	880	51.3	1.1 months
Secure	1,672	480.4	7.2 months
Staff Supervised	1,242	581.5	8.9 months
Community	493	149.3	2.1 months
Other Residential <sup>2</sup>	N/A	25.4	N/A
<b>Total Residential</b>	<b>2,271</b>	<b>1,287.9</b>	<b>18.5</b>

<b>PAROLED YOUTH</b>	<b>Clients Served<sup>1</sup></b>	<b>New Intakes</b>	<b>ADP</b>	<b>LOS</b>
<b>Total Paroled</b>	<b>1,431</b>	<b>880</b>	<b>509.4</b>	<b>6.7</b>

<b>STATEWIDE TOTAL</b>	<b>Clients Served<sup>1</sup></b>	<b>ADP</b>	<b>LOS</b>
<b>STATEWIDE TOTAL</b>	<b>8,848</b>	<b>2,206.1</b>	<b>25.2 months</b>



<sup>1</sup>Clients Served is an unduplicated count. Categorical totals are not a sum of individual program counts and are not available for all categories.

<sup>2</sup>Other Residential includes Group Homes, Job Corps, Hospitalizations, Shelter Care, etc.

NOTE: Throughout the Reference Manual, category sums may vary slightly from given totals due to rounding differences.



**10 Year Detention Trends**

<b>Fiscal Year</b>	<b>Clients Served<sup>1</sup></b>	<b>Percentage Change +/-</b>	<b>New Admits</b>	<b>Percentage Change +/-</b>	<b>ADP<sup>2</sup></b>	<b>Percentage Change +/-</b>	<b>LOS (Days)</b>	<b>Percentage Change +/-</b>
1998-99	8,924	1.6%	15,212	-1.4%	602.4	1.8%	14.6	5.0%
1999-00	8,799	-1.4%	15,294	0.5%	589.1	-2.2%	14.3	-2.1%
2000-01	8,899	1.1%	14,921	-2.4%	583.0	-1.0%	14.5	1.4%
2001-02	8,916	0.2%	16,310	9.3%	545.0	-6.5%	15.7	8.3%
2002-03	8,242	-7.6%	14,059	-13.8%	497.1	-8.8%	15.3	-2.5%
2003-04	7,290	-11.6%	11,148	-20.7%	396.2	-20.3%	12.8	-16.3%
2004-05	7,252	-0.5%	10,970	-1.6%	402.0	1.5%	13.1	2.3%
2005-06	7,215	-0.5%	10,698	-2.5%	426.3	6.0%	14.1	7.6%
2006-07	7,195	-0.3%	10,591	-1.0%	414.9	-2.7%	14.0	-0.7%
2007-08	6,589	-8.4%	10,792	1.9%	408.8	-1.5%	13.7	-2.1%

Fiscal Year 2007-08 was the fourth full year of detention operation under the legislative, statewide cap of 479 youth. The detention population decreased 1.5% from last year's ADP. Ninety-five percent of detained youth were held in State-Operated facilities. Since the detention cap was implemented, there has been a decreased reliance on Privately-Operated placements. Only 5% of this year's ADP was detained in a contracted secure or staff-secure facility. The average length of stay (LOS) for a youth in detention decreased from 14.0 to 13.7 days. The number of clients served followed a six-year trend of decline, with a decrease of 8.4%. The number of new detention admissions increased this year by nearly 2%, which ended a five-year trend of decline. In the previous year (FY 2006-07) the number of new admissions to detention hit an 18-year low. Detention admission decreases were expected following the statewide capping legislation, as only the most serious youth offenders are held in detention, excluding the admission of truants, status offenders, and other less serious offenders.

<sup>1</sup>Clients served counts are unduplicated.

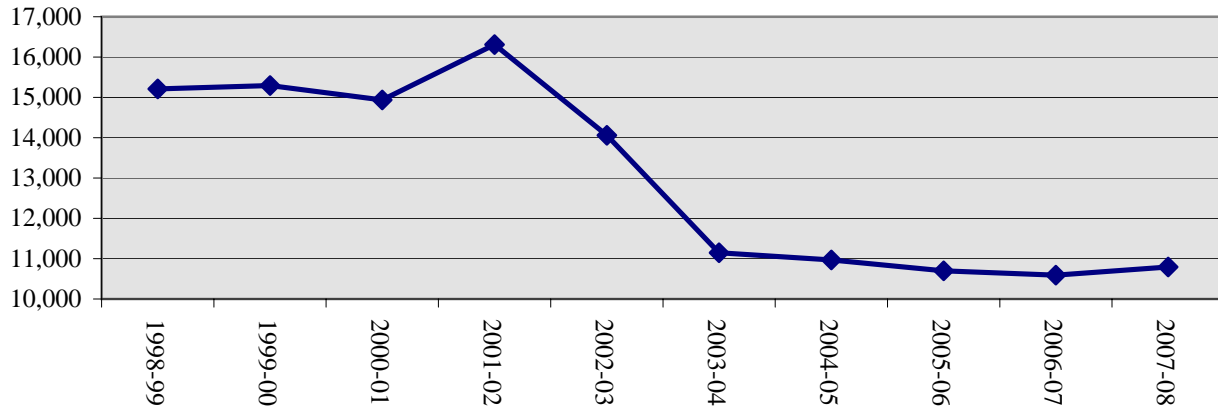
<sup>2</sup>The detention ADP includes youth in the Boot Camp / CAP program during FY 1996-97 through FY 2002-03.



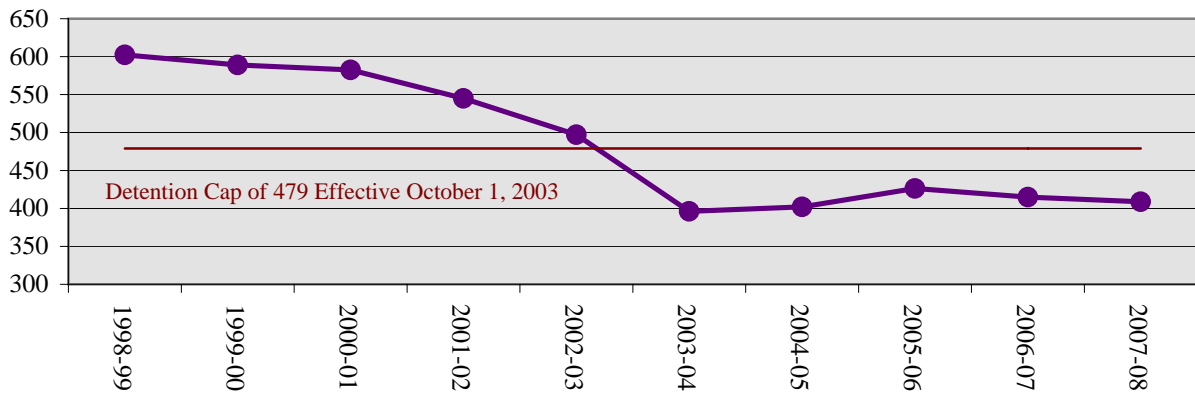
# DETENTION POPULATION TRENDS

FY 1998-99 Through FY 2007-08

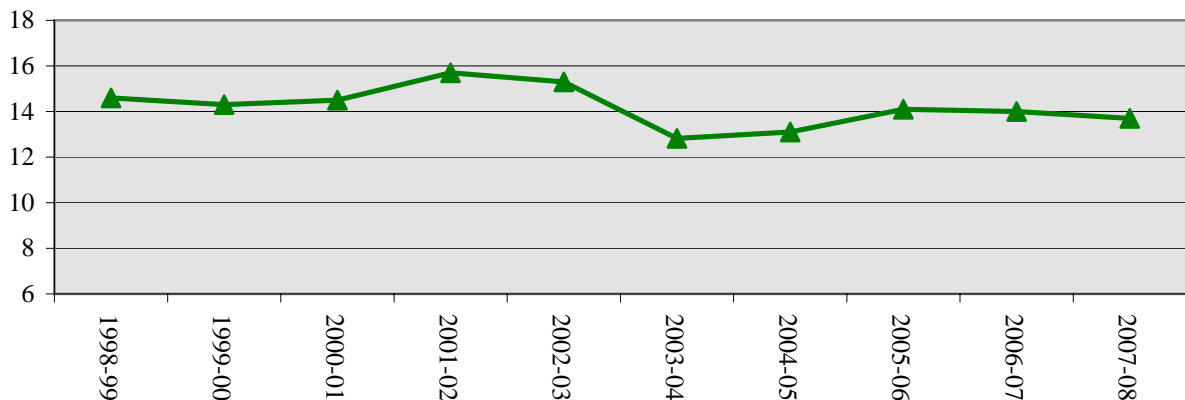
## Trends in Detention Admissions



## Trends in Detention ADP



## Trends in Detention LOS (Days)



**DETENTION**  
**POPULATION BY PROGRAM**

**Fiscal Year 2007-2008**

	Clients Served <sup>1</sup>	New Admits	ADP	LOS (Days)
<i>State Operated</i>				
Adams YSC	556	842	25.8	11.1
Gilliam YSC	1,099	1,377	69.2	17.9
Grand Mesa YSC	356	481	18.8	14.2
Marvin W. Foote YSC	1,591	1,911	84.2	16.2
Mount View YSC	1,072	1,154	46.3	14.3
Platte Valley YSC	1,231	1,845	63.2	12.3
Pueblo YSC	764	1,072	34.0	11.7
Spring Creek YSC	1,171	1,507	45.6	10.9
<i>Subtotal State Operated</i>	<i>6,339</i>	<i>10,189</i>	<i>387.2</i>	<i>13.7</i>
<i>Privately Operated</i>				
Brown Center	21	21	1.3	21.3
Hilltop Youth Services	72	75	2.8	15.7
Midway Remington	205	227	5.9	9.6
Prowers	4	4	0.1	12.9
Robert DeNier	133	175	7.8	15.9
Youthtrack Alamosa (SLV)	79	101	3.7	13.5
<i>Subtotal Privately Operated</i>	<i>494</i>	<i>603</i>	<i>21.6</i>	<i>13.3</i>
<b>STATEWIDE TOTAL</b>	<b>6,589</b>	<b>10,792</b>	<b>408.8</b>	<b>13.7</b>

<sup>1</sup> Clients Served is an unduplicated count. Categorical totals are not a sum of individual program Clients Served.

**DETENTION POPULATION TRENDS**

**ADP BY PROGRAM**

	<b>FY 2003-04</b>	<b>FY 2004-05</b>	<b>FY 2005-06</b>	<b>FY 2006-07</b>	<b>FY 2007-08</b>
<i>State Operated</i>					
Adams YSC	23.6	23.9	24.8	25.9	25.8
Gilliam YSC	62.6	62.8	65.6	63.4	69.2
Grand Mesa YSC	21.6	20.5	21.0	20.8	18.8
Marvin Foote YSC	74.6	80.8	87.1	86.6	84.2
Mount View YSC	47.8	47.3	52.7	51.1	46.3
Platte Valley YSC	62.2	61.4	64.4	63.4	63.2
Pueblo YSC	27.7	29.1	30.7	32.4	34.0
Spring Creek YSC	56.2	53.5	57.6	47.6	45.6
<i>Subtotal State Operated</i>	<i>376.4</i>	<i>379.2</i>	<i>403.8</i>	<i>391.3</i>	<i>387.2</i>
<i>Privately Operated</i>					
Brown Center	1.3	1.5	1.0	1.6	1.3
Colorado West	1.4	0.0	0.0	0.0	0.0
Dahlia Street	0.7	0.0	0.0	0.0	0.0
Emily Griffith	0.4	1.6	1.6	1.4	0.0
Gateway (Southern)	0.0	0.0	0.0	0.0	0.0
Hilltop Youth Services	1.9	2.7	2.5	2.5	2.8
Midway Shelter	0.2	0.0	0.0	0.0	0.0
Midway Remmington	4.4	6.6	6.8	6.8	5.9
Prowers	0.6	0.8	0.8	0.8	0.1
Robert DeNier	7.4	7.1	7.6	7.3	7.8
Youthtrack Alamosa (SLV)	1.5	2.5	2.3	3.3	3.7
<i>Subtotal Privately Operated</i>	<i>19.8</i>	<i>22.8</i>	<i>22.5</i>	<i>23.6</i>	<i>21.6</i>
<b>STATEWIDE DETENTION</b>	<b>396.2</b>	<b>402.0</b>	<b>426.3</b>	<b>414.9</b>	<b>408.8</b>

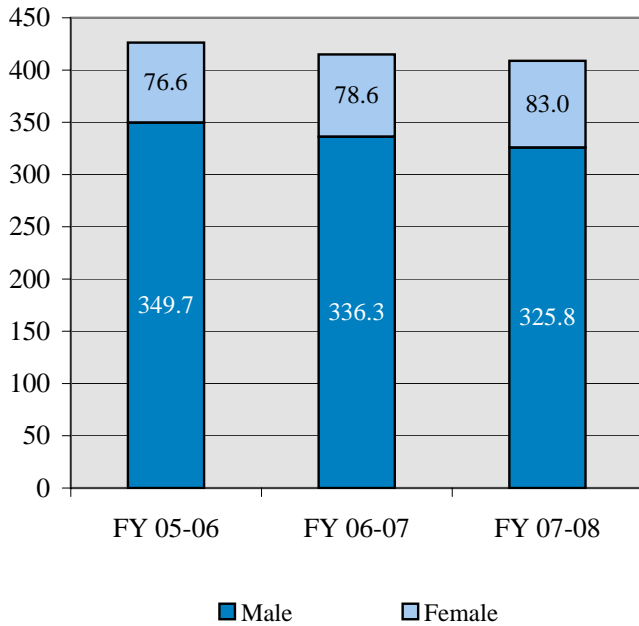
**DETENTION**  
**DEMOGRAPHIC TRENDS**

	FY 2005-06				FY 2006-07				FY 2007-08			
	New Admits	%	ADP	LOS <sup>1</sup>	New Admits	%	ADP	LOS <sup>1</sup>	New Admits	%	ADP	LOS <sup>1</sup>
<b>GENDER</b>												
Male	8,304	77.6%	349.7	14.8	8,082	76.3%	336.3	14.9	8,270	76.6%	325.8	14.3
Female	2,394	22.4%	76.6	11.4	2,509	23.7%	78.6	11.2	2,522	23.4%	83.0	12.0
<b>TOTAL</b>	<b>10,698</b>	<b>100%</b>	<b>426.3</b>	<b>14.1</b>	<b>10,591</b>	<b>100%</b>	<b>414.9</b>	<b>14.0</b>	<b>10,792</b>	<b>100%</b>	<b>408.8</b>	<b>13.7</b>
<b>ETHNICITY</b>												
Anglo-American	4,541	42.4%	169.3	13.2	4,514	42.6%	166.1	13.1	4,487	41.6%	156.5	12.6
African-American	1,720	16.1%	75.8	15.1	1,724	16.3%	75.9	15.9	1,727	16.0%	78.4	16.3
Hispanic/Latino	4,131	38.6%	169.3	14.6	4,012	37.9%	158.2	14.1	4,277	39.6%	162.2	13.8
Native American	151	1.4%	6.4	15.5	117	1.1%	5.9	17.9	133	1.2%	5.8	16.0
Asian-American	64	0.6%	2.6	14.0	107	1.0%	3.9	13.3	57	0.5%	1.4	9.0
Other	91	0.9%	2.8	11.0	117	1.1%	4.8	13.8	111	1.0%	4.5	15.5
<b>AGE</b>												
10 Years	17	0.2%	0.2	5.0	21	0.2%	0.2	3.7	21	0.2%	0.2	3.9
11 Years	73	0.7%	1.8	8.9	55	0.5%	1.0	6.5	55	0.5%	1.6	10.4
12 Years	223	2.1%	8.0	13.0	198	1.9%	8.0	13.7	181	1.7%	5.7	12.1
13 Years	656	6.1%	25.2	13.4	580	5.5%	21.9	13.5	629	5.8%	24.1	13.7
14 Years	1,449	13.5%	56.7	13.3	1,442	13.6%	57.0	14.0	1,250	11.6%	46.2	13.5
15 Years	2,429	22.7%	99.5	14.3	2,486	23.5%	95.1	13.7	2,421	22.4%	90.7	13.5
16 Years	2,821	26.4%	112.2	14.3	2,808	26.5%	113.1	14.4	3,138	29.1%	124.5	14.3
17 Years	3,015	28.2%	122.4	14.5	2,970	28.0%	118.3	14.3	3,088	28.6%	115.6	13.7
18 Years	11	0.1%	0.1	2.5	28	0.3%	0.1	1.7	6	0.1%	0.2	11.0
19 Years and Older	4	0.0%	0.3	24.8	3	0.0%	0.2	25.3	3	0.0%	0.0	3.3
Average Age at Admission	16.0 Years				16.0 Years				16.1 Years			
<b>Prior Admissions</b>												
None	3,986	37.3%	117.0	10.5	4,038	38.1%	113.5	10.0	3,889	36.0%	102.9	9.7
One	2,303	21.5%	97.4	14.8	2,197	20.7%	89.6	14.5	2,274	21.1%	90.7	14.6
Two or more	4,409	41.2%	211.9	17.0	4,356	41.1%	211.8	17.5	4,629	42.9%	215.2	16.7
<b>Program Type</b>												
State Operated	10,182	95.2%	403.8	14.0	9,941	93.9%	391.3	14.1	10,189	94.4%	387.2	13.7
Privately Operated	516	4.8%	22.5	15.6	650	6.1%	23.6	13.0	603	5.6%	21.6	13.3

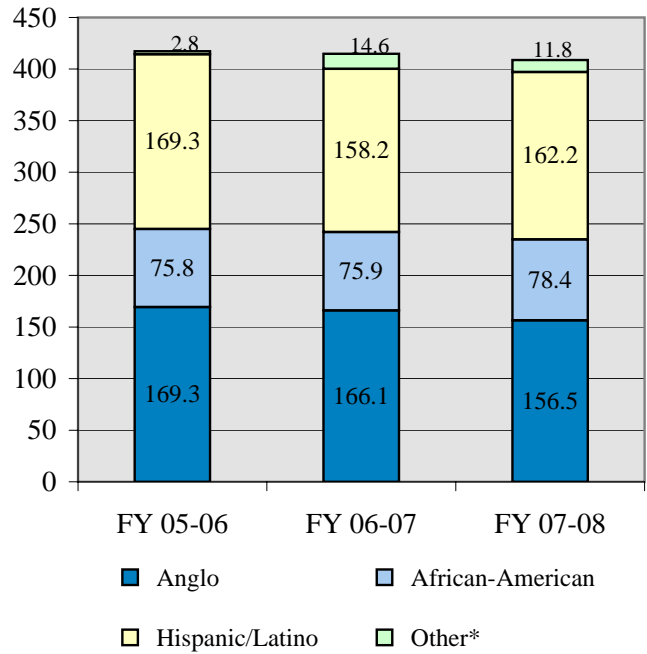
<sup>1</sup>Detained LOS expressed in days.

# DETENTION DEMOGRAPHIC TRENDS

### Detention ADP By Gender

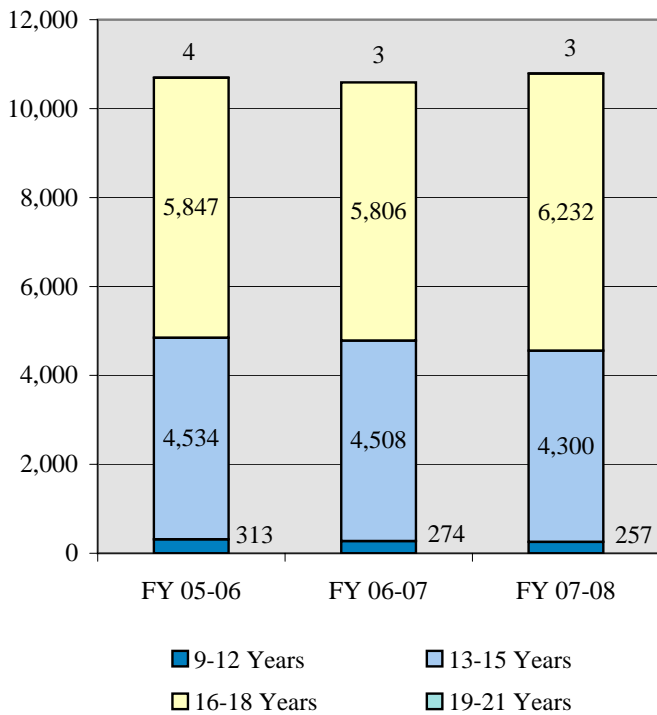


### Detention ADP by Ethnicity

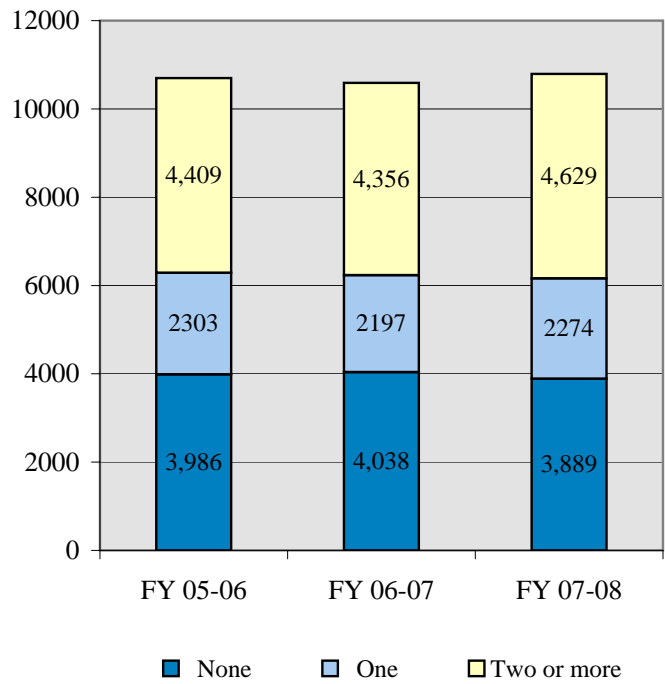


\*Other includes Native American, Asian American, etc.

### Detention Admissions by Age at Admissions



### Detention Admissions by Number of Prior Admissions

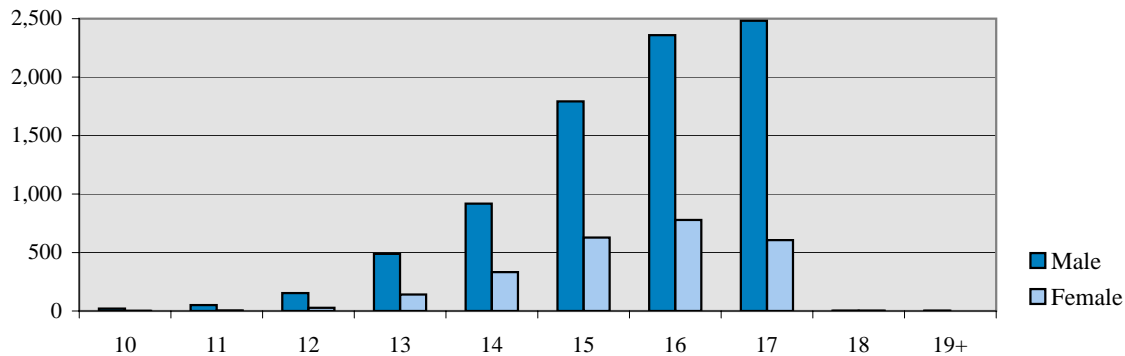


**DETENTION**

**NEW ADMIT DEMOGRAPHIC TRENDS BY GENDER**

	MALES						FEMALES					
	FY 2005-06		FY 2006-07		FY 2007-08		FY 2005-06		FY 2006-07		FY 2007-08	
	N	%	N	%	N	%	N	%	N	%	N	%
<b>DEMOGRAPHIC DATA</b>												
<b>Ethnicity</b>												
Anglo-American	3,393	40.9%	3,288	40.7%	3,273	39.6%	1,148	48.0%	1,226	48.9%	1,214	48.1%
African-American	1,436	17.3%	1,416	17.5%	1,414	17.1%	284	11.9%	308	12.3%	313	12.4%
Hispanic/Latino	3,245	39.1%	3,123	38.6%	3,369	40.7%	886	37.0%	889	35.4%	908	36.0%
Native American	119	1.4%	93	1.2%	103	1.2%	32	1.3%	24	1.0%	30	1.2%
Asian-American	53	0.6%	80	1.0%	42	0.5%	11	0.5%	27	1.1%	15	0.6%
Other	58	0.7%	82	1.0%	69	0.8%	33	1.4%	35	1.4%	42	1.7%
<b>TOTAL NEW ADMISSIONS</b>	<b>8,304</b>	<b>100%</b>	<b>8,082</b>	<b>100%</b>	<b>8,270</b>	<b>100%</b>	<b>2,394</b>	<b>100%</b>	<b>2,509</b>	<b>100%</b>	<b>2,522</b>	<b>100%</b>
<b>Age at Admission</b>												
10 Years	17	0.2%	19	0.2%	20	0.2%	0	0.0%	2	0.1%	1	0.0%
11 Years	65	0.8%	47	0.6%	51	0.6%	8	0.3%	8	0.3%	4	0.2%
12 Years	182	2.2%	162	2.0%	153	1.9%	41	1.7%	36	1.4%	28	1.1%
13 Years	513	6.2%	415	5.1%	488	5.9%	143	6.0%	165	6.6%	141	5.6%
14 Years	1,081	13.0%	1,099	13.6%	918	11.1%	368	15.4%	343	13.7%	332	13.2%
15 Years	1,808	21.8%	1,821	22.5%	1,793	21.7%	621	25.9%	665	26.5%	628	24.9%
16 Years	2,212	26.6%	2,152	26.6%	2,359	28.5%	609	25.4%	656	26.1%	779	30.9%
17 Years	2,413	29.1%	2,345	29.0%	2,482	30.0%	602	25.1%	625	24.9%	606	24.0%
18 Years	9	0.1%	19	0.2%	3	0.0%	2	0.1%	9	0.4%	3	0.1%
19 Years and Older	4	0.0%	3	0.0%	3	0.0%	0	0.0%	0	0.0%	0	0.0%
Average Age at Admission	16.0 Years		16.0 Years		16.1 Years		15.9 Years		16.0 Years		16.0 Years	
<b>Prior Admissions</b>												
None	2,971	35.8%	3,036	37.6%	2,914	35.2%	1,015	42.4%	1,002	39.9%	975	38.7%
One	1,806	21.7%	1,673	20.7%	1,753	21.2%	497	20.8%	524	20.9%	521	20.7%
Two or more	3,527	42.5%	3,373	41.7%	3,603	43.6%	882	36.8%	983	39.2%	1,026	40.7%

**FY 2007-08 Age at Admission**



**DETENTION OVERVIEW**  
**By Region and Judicial District**

Region	JD	YTD New Admits	YTD ADP	YTD LOS
<b>Central</b>				
	1st	1,058	42.8	15.0
	2nd	1,529	75.6	19.2
	5th	77	2.7	13.9
	18th	1,595	69.3	17.9
	<b>Central Total</b>	<b>4,259</b>	<b>190.4</b>	<b>17.5</b>
<b>Northeast</b>				
	8th	696	19.2	10.1
	13th	138	6.7	17.8
	17th	1,029	32.0	12.0
	19th	705	28.3	15.1
	20th	538	15.0	9.7
	<b>Northeast Total</b>	<b>3,106</b>	<b>101.2</b>	<b>10.5</b>
<b>Southern</b>				
	3rd	62	2.5	16.0
	4th	1,472	45.2	11.9
	10th	646	19.0	12.7
	11th	292	7.5	9.4
	12th	115	4.1	14.3
	15th	22	2.0	32.0
	16th	69	2.7	18.0
	<b>Southern Total</b>	<b>2,678</b>	<b>83.0</b>	<b>11.9</b>
<b>Western</b>				
	6th	129	5.8	16.0
	7th	88	4.7	20.3
	9th	64	3.1	16.3
	14th	41	2.2	21.7
	21st	384	12.7	13.2
	22nd	43	1.7	15.6
	<b>Western Total</b>	<b>749</b>	<b>30.2</b>	<b>14.6</b>
	Other ADP*		4.0	
	<b>Statewide Total</b>	<b>10,792</b>	<b>408.8</b>	<b>13.7</b>

\*DYC measures ADP by judicial district based on a maximum of three reasons detained per admission. Other ADP comes from clients who exceed three reasons detained.

**COMMITMENT POPULATION TRENDS**

**Ten Year Commitment Trends**

<b>Fiscal Year</b>	<b>Clients Served<sup>1</sup></b>	<b>Percentage Change +/-</b>	<b>New Commits</b>	<b>Percentage Change +/-</b>	<b>Commitment ADP<sup>2</sup></b>	<b>Percentage Change +/-</b>	<b>LOS (Months)</b>	<b>Percentage Change +/-</b>
1998-99	2,269	10.9%	878	12.4%	1,112.2	14.2%	15.6	3.3%
1999-00	2,544	12.1%	848	-3.4%	1,198.3	7.7%	15.5	-0.6%
2000-01	2,702	6.2%	766	-9.7%	1,251.8	4.5%	16.3	5.2%
2001-02	2,747	1.7%	843	10.1%	1,266.8	1.2%	17.7	8.6%
2002-03	2,689	-2.1%	824	-2.3%	1,327.8	4.8%	19.5	10.2%
2003-04	2,840	5.6%	924	12.1%	1,385.8	4.4%	18.9	-3.1%
2004-05	2,974	4.7%	950	2.8%	1,453.5	4.9%	18.8	-0.5%
2005-06	3,233	8.7%	933	-1.8%	1,453.4	0.0%	18.2	-3.2%
2006-07	3,149	-2.6%	827	-11.4%	1,424.9	-2.0%	19.0	4.4%
2007-08	2,700	-14.3%	795	-3.9%	1,287.9	-9.6%	18.5	-2.6%

During FY 2007-08, the committed population experienced a year of decline in all areas. Commitment ADP experienced a decrease of 137.1 ADP (nearly 10%), going from 1,424.9 in FY 2006-07 to 1,287.9 in FY 2007-08. Clients served decreased by 14.3%. This is the third decrease in the past 10 years, the first decrease of 2.1% occurred in FY 2002-03. The number of new commitments decreased by 3.9%, with 795 in FY 2007-08. For the past 10 years, the number of new commitments have increased and dropped, remaining between 766 and 950 each year. Commitment length of stay (LOS) experienced a 3.0% decrease, going from 19.0 months in FY 2006-07 to 18.4 months in FY 2007-08. LOS has experienced decreases for 4 out of the past 5 years.

<sup>1</sup>Clients Served is an unduplicated count.

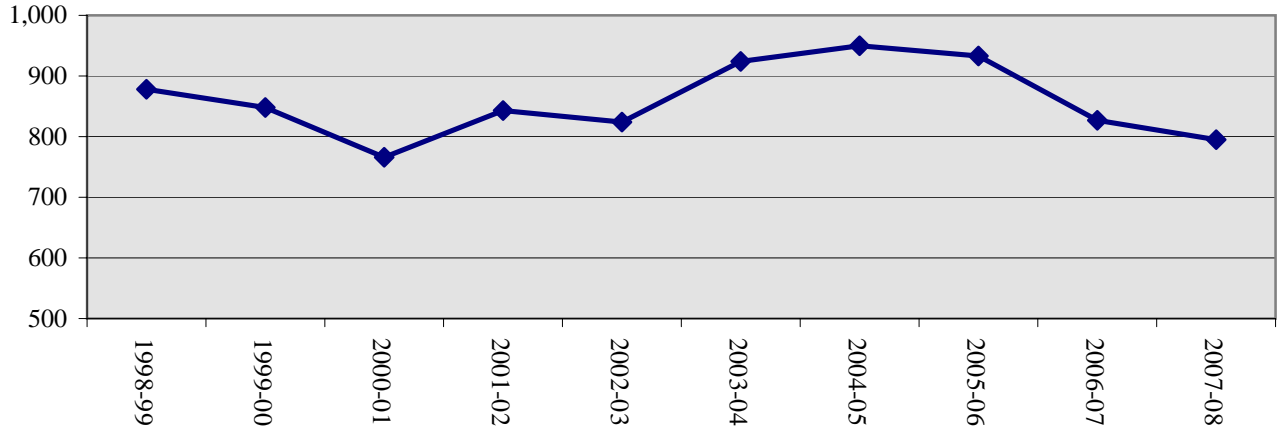
<sup>2</sup>Commitment ADP includes secure, staff-supervised, and community based residential treatment programs.



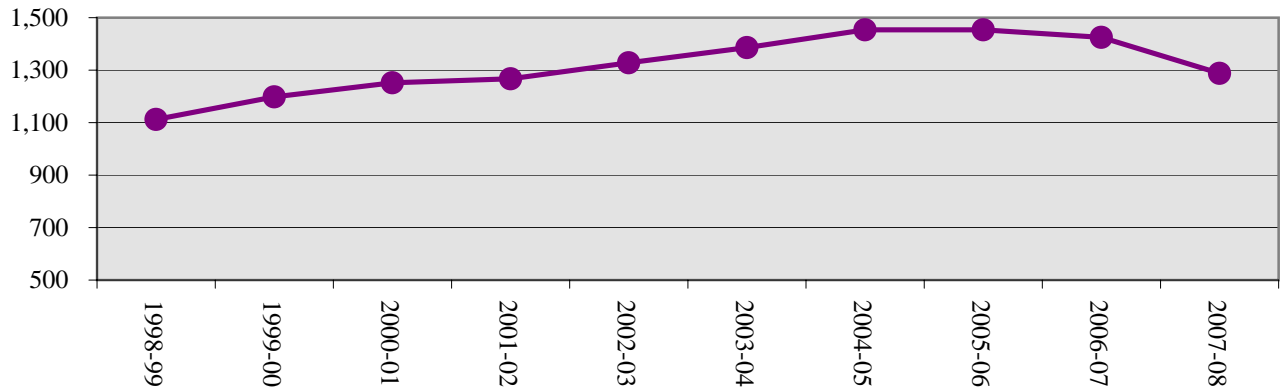
# COMMITMENT POPULATION TRENDS

FY 1998-99 Through FY 2007-08

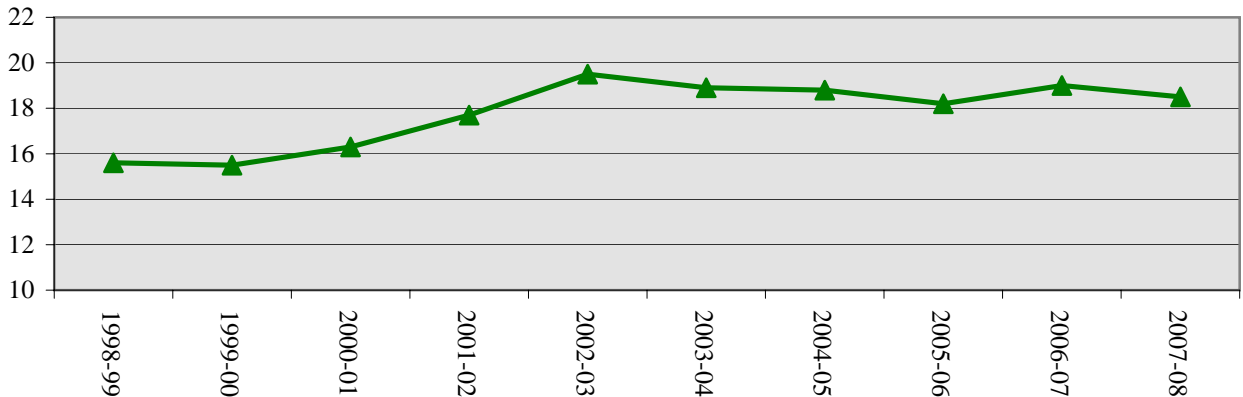
### Trends in New Commitments



### Trends in Commitment ADP



### Trends in Commitment LOS (Months)



**COMMITMENT**  
**POPULATION BY PROGRAM**  
**Fiscal Year 2007-2008**

	Clients Served <sup>1</sup>	ADP
<b>Assessment</b>		
Grand Mesa YSC	90	4.6
Mount View YSC	323	14.6
Platte Valley YSC	286	17.0
Ridge View YSC	111	6.7
Robert Denier YSC	6	0.1
Spring Creek YSC	173	8.2
Zeb Pike YSC	2	0.1
<b>Total Assessment</b>	<b>880</b>	<b>51.3</b>
<b>Secure</b>		
<i>State Operated</i>		
Grand Mesa YSC	138	35.6
Lookout Mountain YSC	335	182.1
Marvin W. Foote YSC	209	14.7
Mount View YSC	357	57.3
Platte Valley YSC	297	46.8
Sol Vista YSC	38	18.9
Spring Creek YSC	198	31.9
Zeb Pike YSC	82	39.3
<i>Subtotal State Operated</i>	<i>1,334</i>	<i>426.6</i>
<i>Privately Operated</i>		
Betty K. Marler Center	82	39.8
Robert Denier YSC	51	14.1
<i>Subtotal Privately Operated</i>	<i>132</i>	<i>53.8</i>
<b>Total Secure</b>	<b>1,672</b>	<b>480.4</b>
<b>Staff-Supervised (Contract)</b>		
Alternative Homes for Youth	18	7.4
Brown Center	12	2.6
Cedar Springs	2	0.5
Childrens Ark	17	6.3
Devereux Cleo Wallace	63	19.6
El Pueblo Ranch	12	3.2
Excelsior Youth Center	1	0.2
Gateway Residential	3	0.7
Griffith Centers - Grand Ave.	25	4.9
Griffith Centers for Children (SR)	8	1.6
Glen Mills Schools	1	0.7
Hand Up Homes for Youth-West	3	1.7
Hilltop/Residential Youth Services	50	11.1
Jefferson Hills	103	40.4
Jefferson Hills Aurora	125	55.4
Kidz Ark-Sterling	8	2.2
Mountain Star Center	9	3.6
Ridgeview YSC	801	400.8
Southern Peaks	48	17.9
Third Way Center - Lowry	5	0.7
Youth Villages Dogwood	1	0.2
<b>Total Staff-Supervised (Contract)</b>	<b>1,242</b>	<b>581.5</b>

<sup>1</sup>Clients Served is an unduplicated count. Categorical totals are not a sum of individual program counts and are not available for all categories.

**COMMITMENT POPULATION**

**BY PROGRAM**

**Fiscal Year 2007-2008**

	Clients Served <sup>1</sup>	ADP
<b>Community (Contract)</b>		
Ariel Clinical Services	5	1.0
Boulder Community Treatment Center	1	0.1
Community Corrections & Work Release	1	0.1
Dale House Project	37	10.0
Daybreak & Daybreak-Princeton	12	4.5
DAYS	33	6.0
Gateway	3	0.7
Griffith Centers for Children (SR)	37	13.4
Job Corps	6	1.4
Kidz Ark New Raymer Ranch	1	0.6
Longmont Community Treatment Center	1	0.2
Lost and Found - Arvada	29	8.6
Lost and Found - Morrison	14	5.0
Maple Star Colorado	2	1.2
Marilee Center	14	5.5
Mesa County Community Corrections	11	2.3
Mt. Evans Qualifying House	35	7.8
Reflections for Youth (RFY) Prairie View	4	1.9
Reflections for Youth (RFY) Wilderness	2	0.6
ROP - Canyon State Academy	1	0.5
Southwest Colorado Community Corrections	1	0.0
Summit Treatment Service	21	4.5
Synergy	14	5.2
Third Way Center	3	1.7
Third Way Center - Pontiac	N/A	3.8
Third Way Center - York	18	4.7
Third Way Center - Lincoln	16	3.6
Touchton Foster Homes	1	0.2
Turning Point Center - Youth and Family	48	14.7
Turning Point Center - Youth and Family Dev	6	2.1
Turning Point - Mathews St.	21	6.5
Youthtrack Jeffco	17	5.8
Youthtrack San Louis Valley	10	2.8
Youthtrack Work and Learn	40	8.9
Youth Ventures <sup>2</sup>	48	14.8
<b>Total Community (Contract)</b>	<b>493</b>	<b>149.3</b>
<b>Other Residential<sup>3</sup></b>	<b>N/A</b>	<b>25.4</b>

<b>STATEWIDE COMMITMENT</b>	<b>2,271</b>	<b>1,287.9</b>
-----------------------------	--------------	----------------

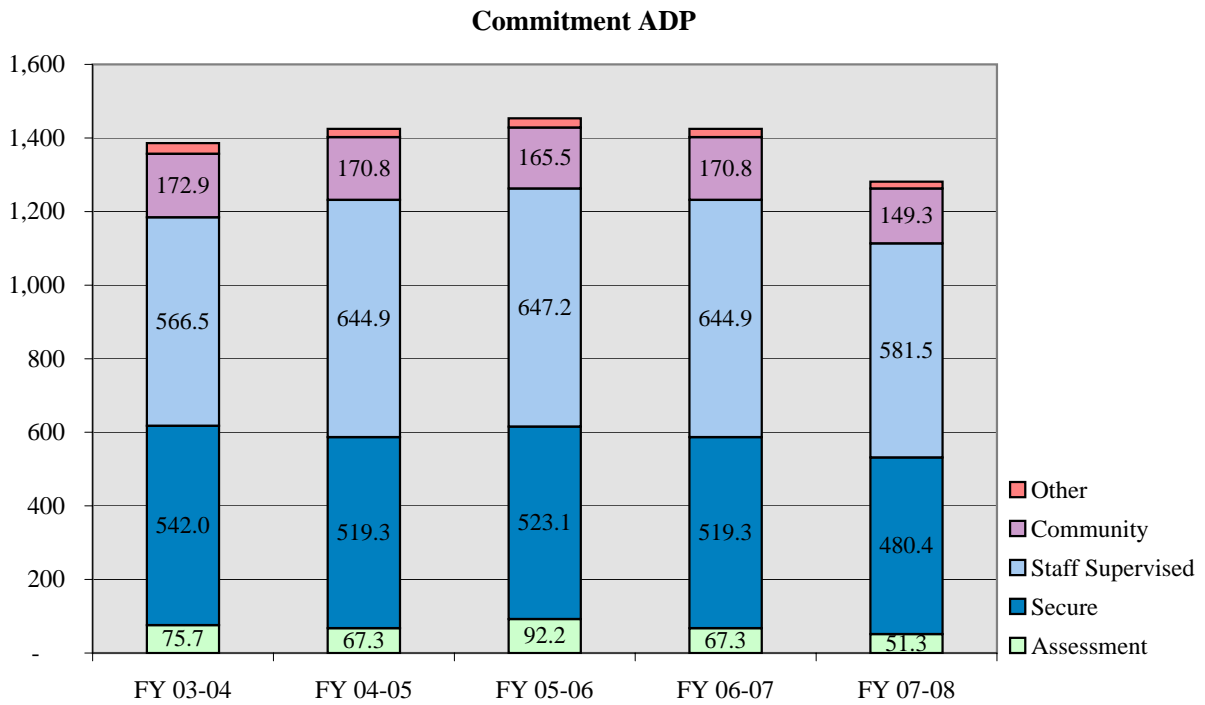
<sup>1</sup>Clients Served is an unduplicated count. Categorical totals are not a sum of individual program counts and are not available for all categories.

<sup>2</sup>Represents a sum of two or more program types or locations

<sup>3</sup>Other Residential includes Group Homes, Job Corps, Hospitalizations etc.

**COMMITMENT POPULATION TRENDS**  
**AVERAGE DAILY POPULATION**

	<b>FY 2003-04</b>	<b>FY 2004-05</b>	<b>FY 2005-06</b>	<b>FY 2006-07</b>	<b>FY 2007-08</b>
Assessment	75.7	72.0	92.2	67.3	51.3
Secure	542.0	498.7	523.1	519.3	480.4
Staff Supervised	566.5	650.2	647.2	644.9	581.5
Community	172.9	203.1	165.5	170.8	149.3
Other Residential <sup>1</sup>	28.8	29.5	25.4	22.6	25.4
<b>Total Commitment ADP</b>	<b>1,385.8</b>	<b>1,453.5</b>	<b>1,453.4</b>	<b>1,424.9</b>	<b>1,287.9</b>



<sup>1</sup>Other Residential includes Group Homes, Job Corps, Hospitalizations etc.

**COMMITMENT**  
**DEMOGRAPHIC TRENDS**

	FY 2005-06			FY 2006-07			FY 2007-08		
	New Commits	%	ADP	New Commits	%	ADP	New Commits	%	ADP
<b>GENDER</b>									
Male	821	88.0%	1,268.4	729	88.1%	1,266.9	671	84.4%	1,136.1
Female	112	12.0%	185.0	98	11.9%	158.0	124	15.6%	151.8
<b>TOTAL</b>	<b>933</b>	<b>100.0%</b>	<b>1,453.4</b>	<b>827</b>	<b>100.0%</b>	<b>1,424.9</b>	<b>795</b>	<b>100.0%</b>	<b>1,287.9</b>
<b>ETHNICITY</b>									
Anglo-American	374	40.1%	632.2	374	45.2%	597.8	338	42.5%	534.9
African-American	167	17.9%	262.5	134	16.2%	262.8	156	19.6%	249.8
Hispanic/Latino	361	38.7%	514.3	290	35.1%	515.7	283	35.6%	458.1
Native American	22	2.4%	25.9	13	1.6%	30.5	11	1.4%	28.1
Asian-American	3	0.3%	7.3	7	0.8%	6.1	3	0.4%	8.0
Other	6	0.6%	11.2	9	1.1%	12.0	4	0.5%	8.9
<b>AGE<sup>1</sup></b>									
11 Years	1	0.1%	0.0	0	0.0%	0.0	1	0.1%	0.0
12 Years	6	0.6%	0.3	3	0.4%	12.6	2	0.3%	1.4
13 Years	24	2.6%	5.0	20	2.4%	48.2	14	1.8%	2.2
14 Years	92	9.9%	45.2	76	9.2%	156.4	52	6.5%	23.5
15 Years	179	19.2%	110.1	131	15.8%	290.4	151	19.0%	80.2
16 Years	240	25.7%	213.9	218	26.4%	365.4	231	29.1%	195.3
17 Years	341	36.5%	376.4	294	35.6%	458.6	278	35.0%	316.1
18 Years	42	4.5%	439.4	70	8.5%	80.2	59	7.4%	372.6
19 Years or Older	8	0.9%	263.1	15	1.8%	13.1	7	0.9%	296.5
Average Age at Commitment:	16.4 Years			16.5 Years			16.7 Years		
Commitments per 10,000 Juvenile	17.9			15.7			15.0		

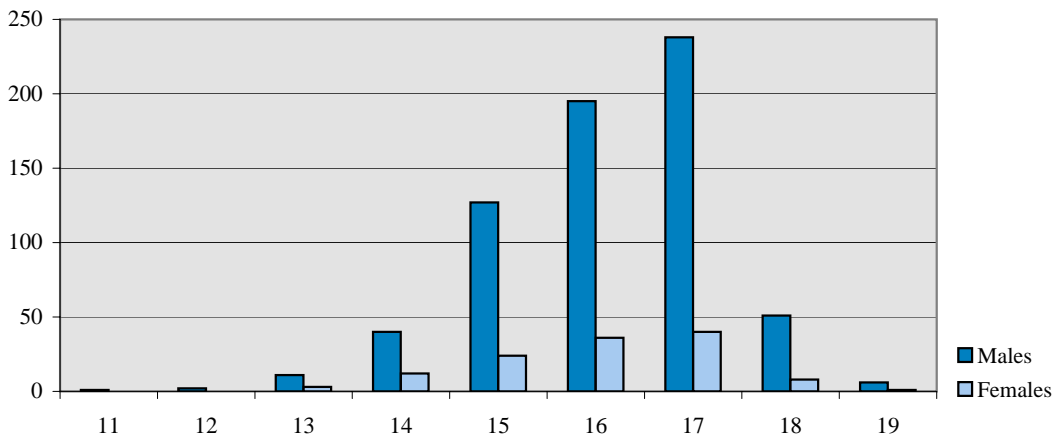
<sup>1</sup>New Commitment counts for each age category correspond to age at commitment. ADP figures for each age category, however, are based on the youth's age on the last day of the fiscal year.

**NEW COMMITMENT TRENDS**

**BY GENDER**

	MALES						FEMALES					
	FY 2005-06		FY 2006-07		FY 2007-08		FY 2005-06		FY 2006-07		FY 2007-08	
	N	%	N	%	N	%	N	%	N	%	N	%
<b>DEMOGRAPHIC DATA<sup>1</sup></b>												
<b>Ethnicity</b>												
Anglo:	316	38.5%	327	44.9%	277	41.3%	58	51.8%	47	48.0%	61	49.2%
African-American:	151	18.4%	122	16.7%	137	20.4%	16	14.3%	12	12.2%	19	15.3%
Hispanic/Latino:	327	39.8%	255	35.0%	244	36.4%	34	30.4%	35	35.7%	39	31.5%
Native American:	20	2.4%	12	1.6%	8	1.2%	2	1.8%	1	1.0%	3	2.4%
Asian-American:	2	0.2%	6	0.8%	3	0.4%	1	0.9%	1	1.0%	0	0.0%
Other:	5	0.6%	7	1.0%	2	0.3%	1	0.9%	2	2.0%	2	1.6%
<b>TOTAL NEW COMMITMENTS</b>	<b>821</b>	<b>100%</b>	<b>729</b>	<b>100%</b>	<b>671</b>	<b>100%</b>	<b>112</b>	<b>100%</b>	<b>98</b>	<b>100%</b>	<b>124</b>	<b>100%</b>
<b>Age</b>												
11 Years	1	0.1%	0	0.0%	1	0.1%	0	0.0%	0	0.0%	0	0.0%
12 Years	6	0.7%	3	0.4%	2	0.3%	0	0.0%	0	0.0%	0	0.0%
13 Years	18	2.2%	16	2.2%	11	1.6%	6	5.4%	4	4.1%	3	2.4%
14 Years	82	10.0%	67	9.2%	40	6.0%	10	8.9%	9	9.2%	12	9.7%
15 Years	159	19.4%	116	15.9%	127	18.9%	20	17.9%	15	15.3%	24	19.4%
16 Years	209	25.5%	194	26.6%	195	29.1%	31	27.7%	24	24.5%	36	29.0%
17 Years	298	36.3%	255	35.0%	238	35.5%	43	38.4%	39	39.8%	40	32.3%
18 Years	40	4.9%	63	8.6%	51	7.6%	2	1.8%	7	7.1%	8	6.5%
19 Years	8	1.0%	15	2.1%	6	0.9%	0	0.0%	0	0.0%	1	0.8%
<b>Average Age at Commitment</b>	<b>16.5 Yrs</b>		<b>16.7 Yrs</b>		<b>16.7 Yrs</b>		<b>16.5 Yrs</b>		<b>16.6 Yrs</b>		<b>16.5 Yrs</b>	

**FY 2007-08 Age at Commitment**



<sup>1</sup>Data based on new commitments.

**NEW COMMITMENT TRENDS  
BY GENDER**

	MALES						FEMALES					
	FY 2005-06		FY 2006-07		FY 2007-08		FY 2005-06		FY 2006-07		FY 2007-08	
	N	%	N	%	N	%	N	%	N	%	N	%
<b>NEW COMMITMENT PROFILE</b>												
<b>Prior Adjudications</b>												
None	241	29.4%	167	22.9%	171	25.5%	48	42.9%	29	29.6%	49	39.5%
One	245	29.8%	243	33.3%	200	29.8%	41	36.6%	41	41.8%	38	30.6%
Two or more	335	40.8%	319	43.8%	300	44.7%	23	20.5%	28	28.6%	37	29.8%
<b>TOTAL NEW COMMITMENTS</b>	<b>821</b>	<b>100%</b>	<b>729</b>	<b>100%</b>	<b>671</b>	<b>100%</b>	<b>112</b>	<b>100%</b>	<b>98</b>	<b>100%</b>	<b>124</b>	<b>100%</b>
<b>Prior Out-of-Home Placements</b>												
None	315	38.4%	260	35.7%	226	33.7%	21	18.8%	15	15.3%	19	15.3%
One	198	24.1%	190	26.1%	190	28.3%	22	19.6%	25	25.5%	31	25.0%
Two or more	308	37.5%	279	38.3%	255	38.0%	69	61.6%	58	59.2%	74	59.7%
<b>Runaway History<sup>1</sup></b>												
No runaway history	302	36.8%	306	42.0%	261	38.9%	22	19.6%	12	12.2%	11	8.9%
Runaway history	474	57.7%	423	58.0%	410	61.1%	88	78.6%	86	87.8%	113	91.1%
Data Not Available	45	5.5%	0	0.0%	0	0.0%	2	1.8%	0	0.0%	0	0.0%
<b>Assessed Substance Abuse Counseling Needs<sup>2</sup></b>												
Prevention	122	14.9%	114	15.6%	79	11.8%	6	5.4%	9	9.2%	12	9.7%
Intervention	217	26.4%	186	25.5%	197	29.4%	33	29.5%	24	24.5%	29	23.4%
Treatment	481	58.6%	427	58.6%	395	58.9%	73	65.2%	65	66.3%	83	66.9%
Data Not Available	1	0.1%	2	0.3%	0	0.0%	0	0.0%	0	0.0%	0	0.0%
<b>Assessed Mental Health Needs<sup>3</sup></b>												
High-Moderate to Severe	490	60.2%	147	20.8%	143	21.3%	58	52.7%	28	29.5%	31	25.0%
Low Moderate/None to Slight	324	39.8%	561	79.2%	528	78.7%	52	47.3%	67	70.5%	93	75.0%
Data Not Available	7	N/A	21	N/A	0	N/A	2	N/A	3	N/A	0	N/A
Average Age at First Adjudication:	13.8		14.2		14.4		14.3		14.5		14.4	

<sup>1</sup>Refers to running away from a secure or nonsecure placement as well as from home during the 12 months prior to commitment.

<sup>2</sup>Substance abuse history and treatment needs are assessed within one month of commitment. Youth with minimal substance abuse history and/or treatment needs are identified for prevention services whereas those reporting the greatest history of abuse and treatment needs are targeted for substance abuse treatment services.

<sup>3</sup>Colorado Client Assessment Record used to assess mental health needs within one month of commitment. Percentages are based on total New Commitment CCRs given and do not include missing data.

**NEW COMMITMENT TRENDS**

**BY GENDER**

	MALES						FEMALES					
	FY 2005-06		FY 2006-07		FY 2007-08		FY 2005-06		FY 2006-07		FY 2007-08	
	N	%	N	%	N	%	N	%	N	%	N	%

**NEW COMMITMENT DATA**

**Offense Type**

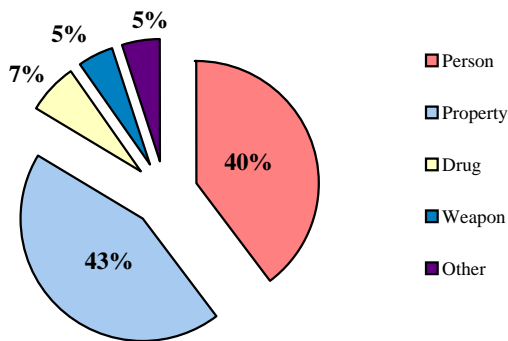
Person Felony	169	20.6%	165	22.6%	156	23.2%	10	8.9%	3	3.1%	17	13.7%
Person Misdemeanor	137	16.7%	141	19.3%	111	16.5%	20	17.9%	28	28.6%	41	33.1%
Property Felony	272	33.1%	238	32.6%	232	34.6%	32	28.6%	24	24.5%	26	21.0%
Property Misdemeanor	71	8.6%	74	10.2%	62	9.2%	21	18.8%	18	18.4%	18	14.5%
Drug Felony	50	6.1%	52	7.1%	43	6.4%	12	10.7%	14	14.3%	3	2.4%
Drug Misdemeanor	7	0.9%	2	0.3%	2	0.3%	1	0.9%	1	1.0%	1	0.8%
Weapons Felony	9	1.1%	10	1.4%	20	3.0%	2	1.8%	1	1.0%	1	0.8%
Weapons Misdemeanor	15	1.8%	11	1.5%	12	1.8%	1	0.9%	0	0.0%	1	0.8%
Other	40	4.9%	14	1.9%	33	4.9%	7	6.3%	5	5.1%	16	12.9%
Data Not Available	51	6.2%	22	3.0%	0	0.0%	6	5.4%	4	4.1%	0	0.0%
<b>TOTAL NEW COMMITMENTS</b>	<b>821</b>	<b>100%</b>	<b>729</b>	<b>100%</b>	<b>671</b>	<b>100%</b>	<b>112</b>	<b>100%</b>	<b>98</b>	<b>100%</b>	<b>124</b>	<b>100%</b>

**Sentence Type**

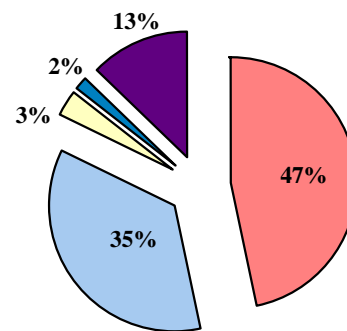
Non-Mandatory	585	71.3%	518	71.1%	471	70.2%	97	86.6%	76	77.6%	91	73.4%
Mandatory	143	17.4%	167	22.9%	151	22.5%	11	9.8%	18	18.4%	25	20.2%
Repeat	68	8.3%	34	4.7%	39	5.8%	3	2.7%	4	4.1%	7	5.6%
Violent	9	1.1%	2	0.3%	3	0.4%	0	0.0%	0	0.0%	0	0.0%
Aggravated Juvenile	10	1.2%	8	1.1%	7	1.0%	1	0.9%	0	0.0%	1	0.8%
Data Not Available	6	0.7%	0	0.0%	0	0.0%	0	0.0%	0	0.0%	0	0.0%

**FY 2007-08 Offense Type<sup>1</sup>**

**MALE**



**FEMALE**



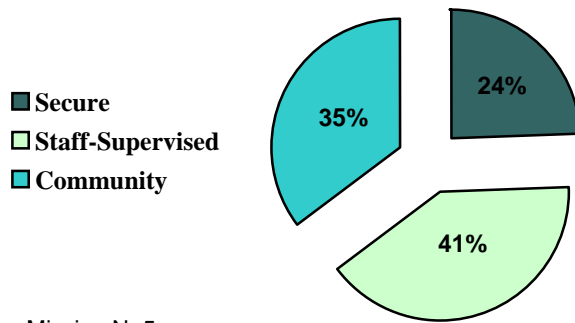
<sup>1</sup>Felony and Misdemeanor counts are combined



**COMMITMENT**  
**COMMITMENT CLASSIFICATION**

	FY 2005-06		FY 2006-07		FY 2007-08	
	N	%	N	%	N	%
<b>COMMITMENT CLASSIFICATION</b>						
Secure	249	26.7%	215	26.0%	193	24.3%
Staff-Supervised	370	39.7%	314	38.0%	319	40.1%
Community	288	30.9%	293	35.4%	278	35.0%
Data Not Available	26	2.8%	5	0.6%	5	0.6%
<b>Total</b>	<b>933</b>	<b>100%</b>	<b>827</b>	<b>100%</b>	<b>795</b>	<b>100%</b>

**FY 2007-08 Initial Commitment Classification**



Missing N=5

**Offense Severity Score**

Serious Person: 8+	16	17	18	19	20
Major Property, Lesser Person: 3 - 7	11	12	13	14	15
Minor Property: 1 - 2	6	7	8	9	10
Other Less Serious: 0	1	2	3	4	5
	1-3	4-7	8-10	11-12	13-14

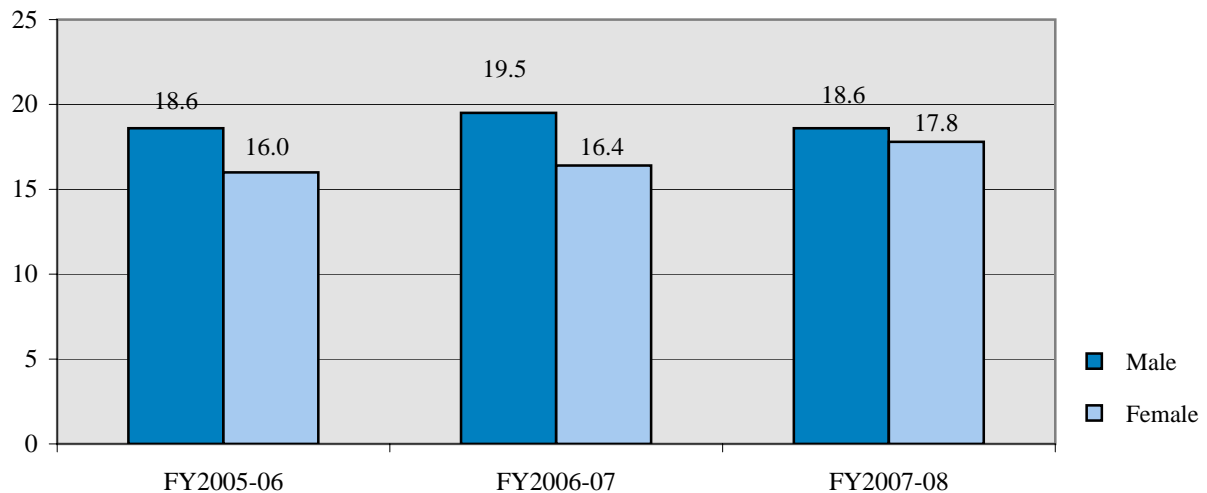
**Recidivism Risk Score**



**COMMITMENT**  
**LENGTH OF STAY (LOS) TRENDS**

	FY 2005-06	FY 2006-07	FY 2007-08
<b>GENDER</b>			
Male	18.6	19.5	18.6
Female	16.0	16.4	17.8
<b>TOTAL Commitment LOS</b>	<b>18.2</b>	<b>19.0</b>	<b>18.5</b>
<b>ETHNICITY</b>			
Anglo-American	17.7	19.5	18.2
African-American	19.1	19.4	20.1
Hispanic/Latino	18.4	18.2	18.0
Native American	17.5	18.5	21.7
Asian-American	19.7	26.8	12.9
Other	14.0	17.8	18.6
<b>AGE<sup>1</sup></b>			
11 Years	0.5	0.0	N/A
12 Years	24.3	35.9	18.0
13 Years	20.6	27.8	27.0
14 Years	19.7	23.7	20.9
15 Years	20.7	20.6	20.4
16 Years	19.1	18.8	18.8
17 Years	15.6	16.7	16.7
18 Years	15.2	15.9	15.8
19 Years	14.6	11.9	13.7

**Commitment LOS**



<sup>1</sup> Refers to Age at Commitment

**COMMITMENT OVERVIEW**  
**By Region and Judicial District**

Region	JD	YTD New Commits	YTD ADP	YTD LOS
<b>Central</b>				
	1st	75	128.0	18.2
	2nd	126	197.7	20.4
	5th	8	12.2	15.9
	18th	119	207.6	19.4
<b>Central Total</b>		<b>328</b>	<b>545.5</b>	<b>19.4</b>
<b>Northeast</b>				
	8th	69	94.7	15.5
	13th	10	18.1	11.5
	17th	74	109.6	18.3
	19th	71	98.8	17.5
	20th	18	20.5	19.5
<b>Northeast Total</b>		<b>242</b>	<b>341.7</b>	<b>16.9</b>
<b>Southern</b>				
	3rd	3	6.4	17.6
	4th	84	173.1	21.5
	10th	22	50.6	19.0
	11th	15	27.5	20.7
	12th	11	10.9	17.5
	15th	4	2.4	6.8
	16th	8	11.9	9.3
<b>Southern Total</b>		<b>147</b>	<b>282.9</b>	<b>20.0</b>
<b>Western</b>				
	6th	15	16.6	13.0
	7th	7	14.2	15.0
	9th	6	10.0	18.9
	14th	4	5.8	14.4
	21st	37	59.2	17.9
	22nd	9	12.1	12.3
<b>Western Total</b>		<b>78</b>	<b>117.8</b>	<b>16.4</b>
<b>Statewide Total</b>		<b>795</b>	<b>1,287.9</b>	<b>18.5</b>

## PAROLE TRENDS

	FY 2005-06			FY 2006-07			FY 2007-08		
	ADP	%	LOS <sup>1</sup>	ADP	%	LOS <sup>1</sup>	ADP	%	LOS <sup>1</sup>
<b>DYC REGION</b>									
Central	209.2	41.1%	6.2	224.6	43.0%	6.6	215.3	42.3%	6.4
Northeast	129.4	25.4%	6.4	144.1	27.6%	6.8	137.3	27.0%	6.8
Southern	100.1	19.7%	6.7	92.1	17.6%	6.9	105.5	20.7%	7.1
Western	70.0	13.8%	6.9	61.7	11.8%	7.3	51.3	10.1%	6.5
<b>TOTAL</b>	<b>508.7</b>	<b>100%</b>	<b>6.4</b>	<b>522.6</b>	<b>100%</b>	<b>6.8</b>	<b>509.4</b>	<b>100%</b>	<b>6.7</b>
<b>GENDER</b>									
Male	438.1	86.1%	6.6	450.2	86.1%	6.8	450.4	88.4%	6.7
Female	70.7	13.9%	5.7	72.4	13.9%	6.5	59.0	11.6%	6.3
<b>ETHNICITY</b>									
Anglo American	240.6	47.3%	6.5	237.8	45.5%	6.9	208.7	41.0%	6.7
African-American	79.3	15.6%	6.2	85.8	16.4%	6.3	94.7	18.6%	6.9
Hispanic/Latino	170.8	33.6%	6.6	185.2	35.4%	6.8	185.7	36.5%	6.5
Native American	10.4	2.0%	5.1	9.1	1.7%	7.9	14.1	2.8%	7.5
Asian-American	3.2	0.6%	7.5	2.9	0.6%	5.0	1.7	0.3%	8.0
Other	4.3	0.8%	6.0	1.8	0.3%	6.0	4.6	0.9%	6.0
<b>AGE<sup>2</sup></b>									
13 Years	0.0	0.0%	8.4	0.5	0.1%	7.8	0.0	0.0%	6.0
14 Years	2.7	0.5%	7.1	3.5	0.7%	13.6	1.1	0.2%	10.3
15 Years	13.5	2.6%	6.7	21.0	4.0%	6.7	7.4	1.5%	8.5
16 Years	42.8	8.4%	7.1	41.0	7.9%	7.7	40.6	8.0%	7.1
17 Years	90.9	17.9%	7.2	87.0	16.6%	7.0	74.8	14.7%	7.5
18 Years	155.1	30.5%	6.4	160.2	30.7%	6.6	132.1	25.9%	6.3
19 Years and older	203.8	40.1%	6.3	209.4	40.1%	6.0	253.3	49.7%	6.3

<sup>1</sup>Parole LOS expressed in months.

<sup>2</sup>LOS for each age category corresponds to age at the time of parole. ADP figures are based on the youth's age on the last day of the fiscal year.

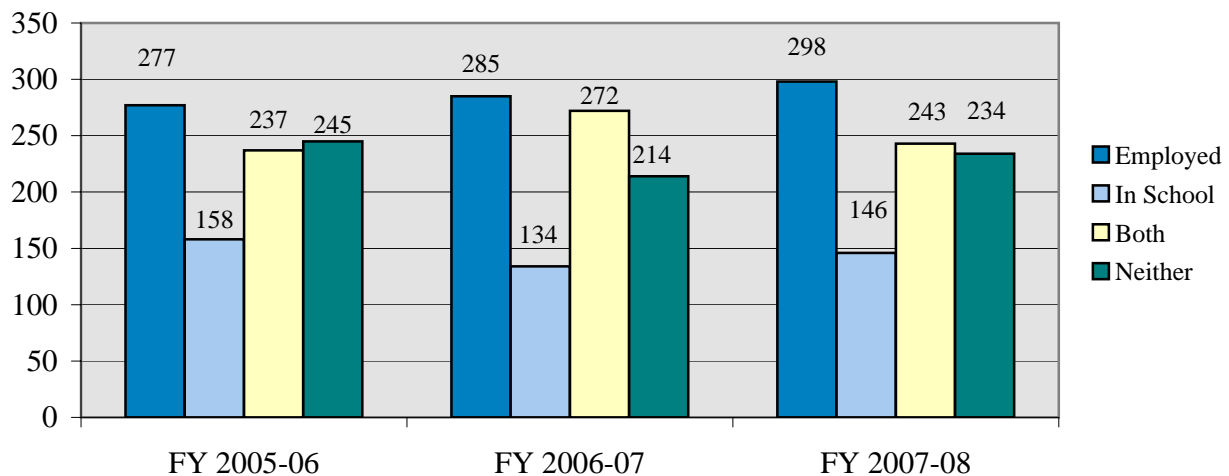
## DISCHARGE TRENDS

	FY 2005-06		FY 2006-07		FY 2007-08	
	N	%	N	%	N	%
<b>DISCHARGED YOUTH</b>						
<b>DISCHARGE PLACEMENT</b>						
Adult Jail/ Corrections Home <sup>1</sup>	120	12.9%	100	10.6%	95	10.0%
Home <sup>1</sup>	765	82.3%	782	83.0%	783	82.4%
Group Living	9	1.0%	16	1.7%	14	1.5%
Other Placement	31	3.3%	35	3.7%	47	4.9%
Escape	3	0.3%	3	0.3%	1	0.1%
Data Not Available	1	0.1%	6	0.6%	10	1.1%
<b>TOTAL</b>	<b>929</b>	<b>100%</b>	<b>942</b>	<b>99%</b>	<b>950</b>	<b>100.0%</b>

<b>JOB/ SCHOOL STATUS AT DISCHARGE</b>						
Employed Only	277	29.8%	285	30.3%	298	31.4%
Enrolled in School Only	158	17.0%	134	14.2%	146	15.4%
Employed and Enrolled in School	237	25.5%	272	28.9%	243	25.6%
Unemployed and Unenrolled	245	26.4%	214	22.7%	234	24.6%
Data Not Available	12	1.3%	37	3.9%	29	3.1%

<b>PAROLE ADJUSTMENT AT DISCHARGE</b>						
Satisfactory to Excellent	610	65.7%	645	68.5%	605	63.7%
Poor to Unsatisfactory	262	28.2%	248	26.3%	286	30.1%
Not on Parole at Time of Discharge	46	5.0%	43	4.6%	47	4.9%
Data Not Available	11	1.2%	6	0.6%	12	1.3%

**Job / School Status at Parole Discharge**



<sup>1</sup>The 'Home' category includes parent(s), guardian, adoptive family, foster family, relative, spouse, friend, independent living.

**COMMITMENT DEMOGRAPHIC TRENDS**

**FY 2007-2008 DATA BY REGION**

	CENTRAL			NORTHEAST			SOUTHERN			WESTERN		
	New <sup>1</sup>	ADP	LOS <sup>2</sup>	New <sup>1</sup>	ADP	LOS <sup>2</sup>	New <sup>1</sup>	ADP	LOS <sup>2</sup>	New <sup>1</sup>	ADP	LOS <sup>2</sup>
<b>GENDER</b>												
Male	284	483.3	19.2	197	301.7	17.3	128	246.9	19.7	62	104.2	17.6
Female	41	55.5	20.8	49	47.1	14.8	19	32.5	22.5	15	16.7	12.2
<b>TOTAL</b>	<b>325</b>	<b>538.8</b>	<b>19.4</b>	<b>246</b>	<b>348.8</b>	<b>16.9</b>	<b>147</b>	<b>279.4</b>	<b>20.0</b>	<b>77</b>	<b>120.9</b>	<b>16.4</b>
<b>ETHNICITY</b>												
Anglo-American	111	181.7	18.3	114	150.5	17.4	65	128.7	20.1	48	74.1	17.2
African-American	108	159.3	20.2	17	27.2	14.1	27	55.6	22.1	4	7.8	11.3
Hispanic/Latino	100	181.3	19.5	112	159.7	16.3	52	90.0	18.5	19	27.1	16.3
Native American	3	10.7	25.1	1	5.8	24.2	2	1.9	31.1	5	9.6	12.9
Asian-American	3	5.7	11.7	0	2.3	15.3	0	0.0	N/A	0	0.0	N/A
Other	0	0.1	25.5	2	3.2	27.3	1	3.2	10.6	1	2.4	16.4
<b>AGE<sup>3</sup></b>												
11 Years	1	0.0	N/A	0	0.0	N/A	0	0.0	N/A	0	0.0	N/A
12 Years	0	0.9	N/A	1	0.6	N/A	1	0.0	19.0	0	0.0	17.1
13 Years	7	0.4	30.0	3	0.0	19.9	3	1.8	26.7	1	0.0	25.5
14 Years	18	4.8	23.0	18	8.9	16.9	12	6.2	23.7	4	3.7	16.9
15 Years	57	26.7	21.8	50	26.0	19.2	26	20.3	23.9	18	7.3	13.8
16 Years	88	78.2	19.9	71	48.4	17.4	52	46.6	18.8	20	22.1	17.5
17 Years	122	133.4	17.0	83	78.6	15.8	44	71.9	17.6	29	32.2	16.5
18 Years	28	155.1	13.8	18	98.8	17.1	9	80.6	17.3	4	38.1	11.3
19 Years and Older	4	139.3	15.7	2	87.6	10.1	0	52.0	N/A	1	17.6	N/A
Average Age at Commitment:	16.8 Years			16.6 Years			16.5 Years			16.7 Years		
<b>SENTENCE TYPE</b>												
Non-Mandatory	273	418.1	19.1	123	178.9	15.9	118	223.9	19.8	48	74.6	16.3
Mandatory	31	85.2	20.6	101	131.5	17.7	23	37.9	17.0	21	28.9	16.5
Repeat	16	26.0	20.2	18	25.6	18.9	6	10.3	19.3	6	15.2	16.3
Violent	1	3.6	19.5	1	0.9	17.9	0	0.4	13.4	1	0.4	24.0
Aggravated Juvenile	4	6.0	N/A	3	11.9	26.2	0	6.9	39.3	1	1.8	N/A

<sup>1</sup>Indicates new commitments.

<sup>2</sup>Commitment LOS expressed in months.

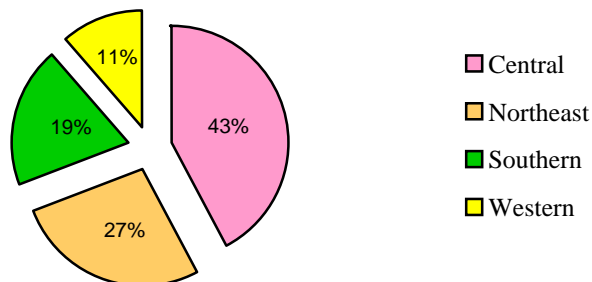
<sup>3</sup>Actual counts and LOS for each age category correspond to age at commitment. ADP figures for each age category are based on the youth's age on the last day of the fiscal year.

# DISCHARGE DEMOGRAPHIC TRENDS

## FY 2007-2008 DATA BY REGION

	CENTRAL		NORTHEAST		SOUTHERN		WESTERN	
	N	%	N	%	N	%	N	%
<b>DISCHARGED YOUTH</b>								
<b>DISCHARGE PLACEMENT</b>								
Adult Jail/ Corrections Home <sup>1</sup>	40	10.0%	20	7.8%	25	13.6%	10	9.3%
Home <sup>1</sup>	326	81.5%	222	86.0%	147	79.9%	88	81.5%
Group Living	4	1.0%	3	1.2%	3	1.6%	4	3.7%
Other Placement	24	6.0%	11	4.3%	8	4.3%	4	3.7%
Escape	0	0.0%	1	0.4%	0	0.0%	0	0.0%
Data Not Available	6	1.5%	1	0.4%	1	0.5%	2	1.9%
<b>TOTAL</b>	<b>400</b>	<b>99%</b>	<b>258</b>	<b>100%</b>	<b>184</b>	<b>100%</b>	<b>108</b>	<b>100%</b>
<b>JOB/ SCHOOL STATUS</b>								
Employed Only	131	32.8%	110	42.6%	43	23.4%	14	13.0%
Enrolled in School Only	66	16.5%	48	18.6%	16	8.7%	16	14.8%
Employed and Enrolled in School	90	22.5%	38	14.7%	55	29.9%	60	55.6%
Unemployed and Unenrolled	105	26.3%	61	23.6%	56	30.4%	12	11.1%
Data Not Available	8	2.0%	1	0.4%	14	7.6%	6	5.6%
<b>PAROLE ADJUSTMENT</b>								
Satisfactory to Excellent	263	65.8%	159	61.6%	110	59.8%	73	67.6%
Poor to Unsatisfactory	116	29.0%	82	31.8%	63	34.2%	25	23.1%
Not on Parole at Time of Discharge	15	3.8%	15	5.8%	9	4.9%	8	7.4%
Data Not Available	6	1.5%	2	0.8%	2	1.1%	2	1.9%
<b>PROGRAM TYPE</b>								
	<b>LOS (Months)</b>							
Secure	7.3		6.8		7.8		7.4	
Staff Supervised	9.8		7.9		9.4		7.3	
Community Residential	2.2		2.1		2.7		1.1	
Total Commitment	19.4		16.9		20.0		16.4	
Parole	6.4		6.8		7.1		6.5	
Total Commitment & Parole	26.2		24.0		26.8		22.4	

**FY 2007-08 Percent of Discharged Youth by Region**



<sup>1</sup>The 'Home' category includes parent(s), guardian, adoptive family, foster family, relative, spouse, friend, independent living.

## Glossary of Terms Used

**Disclaimer:** *These definitions are provided for quick reference purposes only. Please refer to the Colorado Revised Statutes for more complete definitions of legal categories and conditions.*

**Adjudication** – The result of an adjudicatory hearing in which the court determines that it has been proven beyond a reasonable doubt that a juvenile has committed a delinquent act, or that a juvenile has pled guilty to committing a delinquent act.

**Aggravated Offender (Sentence Type)** – see *Sentencing Special Offenders*.

**Assessment** - Youth committed to DYC are assessed to determine a youth's classification level and needs for appropriate placement and program referral.

**Average Daily Population (ADP)** - The average number of youth present in a facility or program during the reporting period.

**Colorado Client Assessment Record (CCAR)** - An assessment tool used to evaluate mental health treatment needs.

**Community Accountability Program** – Youth could be sentenced to the Community Accountability Program (CAP) as a condition of probation, after the cessation of the Regimented Juvenile Training Program. The sentence included a 60-day residential program, focusing on restorative justice and youth skill development. The residential phase was followed by an intensive aftercare program for 120 days, or until the period of probation expires. The aftercare phase, also based on a restorative justice model, focused on continued service delivery to youth and families as well as reintegration into the community. Funding for CAP was eliminated in the FY 2002-03 Supplemental Reduction.

**Clients Served: Residential & Parole (commitment)** - The total number of youth served in a particular program during the reporting period. Total clients served in a given category (e.g. secure or staff-supervised) represent unduplicated counts of clients served in those categories. Since youth can be served in more than one type of program in the course of a year, the total clients served in a particular category will not equal the sum of the clients served in each program.

**Clients Served: Detention** - The total number of youth served in a particular program during the reporting period. Total clients served in a facility or program (e.g. Adams YSC) represents unduplicated counts of clients served in those facilities. Since the same youth can have multiple admissions to detention and be served in more than one particular facility in the course of a year, the total clients served in all facilities will not equal the sum of the clients served in each facility.

**Commitment** - Commitments are dispositions of juvenile cases resulting in the transfer of legal custody to the Department of Human Services by the court as a result of an adjudicatory hearing on charges of delinquent acts committed by the youth.



***Commitment Sentence Type*** - Juveniles who have been adjudicated delinquent and committed to the Division of Youth Corrections can be given either non-mandatory or mandatory sentences. Mandatory sentences require that a youth spend a specified minimum amount of time in out-of-home placement and can include repeat and violent offenders. Juveniles can also be sentenced as aggravated offenders (Section 19-2-601, C.R.S.).

***Community Residential Placement*** – DYC contracts with a number of private vendors to provide community-based programs to youth presenting the lowest risk of re-offending and youth transitioning from more secure programs.

***Detention*** - The custodial status of youth who are being confined or supervised after arrest or while awaiting the completion of judicial proceedings. Detention youth are served in secure state-operated or staff-secure (privately-operated) facilities. Some detention youth are served in non-residential, community-based supervision programs.

***Detention Admission*** - Each admission to detention for temporary custody of youth is tracked independently. In contrast to unduplicated counts of clients served in detention, one youth can have multiple admissions for a single incident. For example, if a youth is admitted to detention on a pretrial basis (preadjudicated) and released, a later sentencing to detention on the original charge would count as a separate admission, even though it is the same youth and the same incident. Likewise, if the youth serves the sentence on weekends, each weekend admission counts as a separate admission.

***Detention Sentence*** - The court imposed sanction of confinement to a detention facility as a disposition of a delinquency adjudication. Major sentence types include probation sentences, traffic sentences, handgun sentences, municipal sentences, game and fish sentences, contempt sentences, and non-probation sentences for a delinquent act.

***Initial Commitment Classification Instrument (ICCI)*** - An objective commitment classification instrument is administered during assessment to guide the placement decisions concerning the type of commitment program most suitable for individual youth given the severity of their commitment offense coupled with the risk of re-offending.

***Length of Stay (LOS): Residential*** - All residential LOS figures are measured in months and are calculated for those discharged youth who spent time in the program for which LOS is reported (e.g., secure) prior to parole.

***Length of Stay (LOS): Detention*** - The amount of time spent in a detention facility or program during the time period. All detention LOS figures are measured in days and are based on released youth.

***Length of Stay (LOS): Parole*** – The amount of time spent on parole status. Parole LOS is measured in months and are based on discharged youth.

***Mandatory Sentence Offender***- See *Sentencing Special Offenders*.

***Municipal Sentence*** - Detention sentence imposed by a municipal court for violation of municipal ordinances.

***New Commitment*** - Commitment of youth who were not previously committed, or who were previously committed but had been discharged from DYC.

***Non-Mandatory Sentences*** - These sanctions involve no minimum out-of-home sentence length. The maximum sentence length cannot exceed 24 months. The Juvenile Parole Board determines release from commitment to parole status.

***Other Residential*** – Placements include Job Corps, Group Homes, Hospitalization, etc.

***Parole*** - The status of an offender conditionally released from a residential setting by discretion of the Juvenile Parole Board. Colorado juvenile offenders have a mandatory minimum parole length of 6 months. While on parole a youth is placed under the supervision of a parole officer and is required to observe conditions of release set by the parole officer and the Juvenile Parole Board.

***Parole Revocation*** - The administrative action of the Juvenile Parole Board, which removes a youth from parole status in response to a violation of lawfully required conditions of parole, including the prohibition against commission of a new offense.

***Parole Suspension*** - The administrative action of the Juvenile Parole Board, which removes a youth from parole status in response to a violation of lawfully required conditions of parole, including the prohibition against commission of a new offense. Reconsideration of parole must occur within 90 days on a date determined by the Juvenile Parole Board.

***Parole Violation*** – Actions by a parolee that do not conform to the conditions of parole.

***Preadjudicated*** - The legal status of youth pending delinquency adjudication decisions. Often these youth are referred to as pre-trial youth since they are generally admitted to detention pending some court action. This category also includes youth who are serving a sentence, such as probation, on a prior delinquency adjudication and who are in detention pending a new court action.

***Prior Adjudications*** - Adjudications that occurred prior to the current detention or commitment event.

***Prior Out-of-home Placements*** - Placements in Social Services or DYC residential programs or other treatment programs prior to the current commitment sentence.

***Repeat Offender*** - see *Sentencing Special Offenders*.

***Regional Management Structure*** - Decentralized DYC management structure comprised of four geographic regions in the state.

***Residential Programs*** - Programs that provide 24-hour care.

***Residential Length of Stay (LOS)*** - The average amount of time spent in all residential programs (assessment, secure, staff secure, and community programs) for youth discharged from DYC during the reporting period.

**Secure Residential Facility** – A facility with physical security features such as locked doors, sally-ports, and correctional fencing.

**Sentencing Special Offenders** (see Section 19-2-908, C.R.S.)

- a. **Mandatory Sentence Offender** – These sanctions specify a minimum time period of up to 24 months or less during which a youth must be in an out-of-home placement.
- b. **Repeat Offender (Sentence Type)** - A 'repeat' sentence type can be imposed on a juvenile who has been previously adjudicated a juvenile delinquent, and is adjudicated a juvenile delinquent for a delinquent act that constitutes a felony, or if his or her probation is revoked for a delinquent act that constitutes a felony. The court may or may not designate a minimum sentence length.
- c. **Violent Offender (Sentence Type)** - A juvenile may be sentenced as a violent offender if he or she is adjudicated a juvenile delinquent for a delinquent act that constitutes a crime of violence as defined in Section 16-11-309(2), Colorado Revised Statutes.
- d. **Aggravated Offender (Sentence Type)** – These sanctions specify a time period of three to seven years, during which time a youth must remain in the custody of the Department of Human Services. Contingent upon court approval, youth may be eligible for non-secure placement, parole, or transfer to the Department of Corrections (adult corrections).

**Staff-Supervised Residential Facility** – Privately owned and operated, staff-supervised facilities provide 24-hour line of sight supervision of youth.

**State Owned / Privately Operated Programs** - Detention or commitment programs which are administered by contract service providers in DYC owned facilities.

**State Owned / State Operated Programs** - Detention or commitment programs which are administered by DYC employees in DYC owned facilities.

**Residential & Parole Length of Stay (LOS)** - The average amount of time in DYC custody (sentence start date to discharge date including parole) for all youth discharged from DYC during the reporting period, not including escape time.

**Violent Offender (Sentence Type)** – see *Sentencing Special Offenders*.