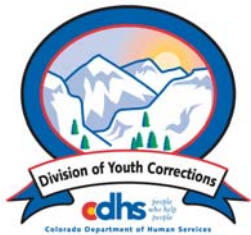


Fiscal Year 2006-2007

Management Reference Manual



Colorado Department of Human Services
Office of Children, Youth and Family Services
Division of Youth Corrections

Working with Colorado Communities to Achieve Justice

February 2008

This manual provides the information most often requested on DYC client populations. Any questions concerning the data presented in this manual may be directed to the Research and Evaluation Unit, Division of Youth Corrections, 4255 S. Knox Court, Denver, CO 80236, or Kristen.Peterson@state.co.us

**Colorado Department of Human Services
Division of Youth Corrections**



February, 2008

<http://www.cdhs.state.co.us/dyc/Research.htm>

STATE OF COLORADO



Colorado Department of Human Services

people who help people

OFFICE OF CHILDREN, YOUTH AND FAMILY SERVICES
John Gomez, Interim Director

DIVISION OF YOUTH CORRECTIONS
John Gomez, Director

4255 South Knox Court
Denver, Colorado 80236
Phone 303-866-7345
FAX 303-866-7344
www.cdhs.state.co.us



Bill Ritter, Jr.
Governor

Karen L. Beye
Executive Director

The Division of Youth Corrections (DYC) is pleased to release its FY 2006-07 Management Reference Manual. This reference manual is designed to provide population information and other trend data for youth served by DYC. This report primarily focuses on detained youth, committed youth, and youth released to the community on parole.

FY 2006-07 was the third year that the Division has operated under statutory limits on the total detention population; whereas the detention population cannot exceed 479 youth at any time. As a result of the provisions of SB 03-286, detention Average Daily Population (ADP) is still significantly lower than it had been before the capping legislation. Detention ADP is 24% lower than it was five years ago. At 414.9, it is down 2.7% from the previous fiscal year.

Despite steady growth trends in the commitment population throughout the 1990s and the first half of this decade, recent population data has observed a reversal of this trend. There was a two percent reduction in the Commitment ADP compared to fiscal year 2005-06. The ADP for the Committed Population for FY 2005-06 and FY 2006-07 was 1453.4 and 1424.9, respectively.

The parole population experienced a three-percent increase in ADP for FY 2006-07. This represents only the second time within the last five years that the parole population witnessed a growth. The Division anticipates that the parole population will continue to grow as a consequence of having more youth benefit from the services made available through the Continuum of Care Initiative.

Thank you for your interest in the Division of Youth Corrections. Additional information is available on the Division's web site at <http://www.cdhs.state.co.us/dyc>.

Sincerely,

A handwritten signature in black ink that reads "John Gomez".

John Gomez
Director, Division of Youth Corrections

Management Reference Manual
Fiscal Year 2006-2007

Executive Summary	i
Section I: Colorado State Totals	
Filtering Process to Detention	1
Filtering Process to Commitment	2
All Clients Population Data	3
Section II: Detention Program Services	
Detention Population Trends	4
Detention Population by Program	6
Detention Population Trends ADP by Program	7
Detention Demographic Trends	8
Detention Demographic Trends by Gender	10
Section III: Commitment Program Services	
Commitment Population Trends	11
Commitment Population by Program	13
Commitment Population Trends ADP	15
Commitment Demographic Trends	16
Commitment Demographic Trends by Gender	17
New Commitment Trends by Gender	18
Commitment Classification	20
Commitment Length of Stay Trends	21
Section IV: Parole Program Services	
Parole Trends	22
Discharge Trends	23
Section V: Regional Summaries	
Commitment Demographic Trends	24
Discharge Trends	25
Glossary of Terms	Appendix

Fiscal Year 2006-07 Executive Summary

The Management Reference Manual is designed to provide population information on youth served by the Division of Youth Corrections (DYC) during FY 2006-07 and other trend data. Section I contains statewide population information, while Sections II and III provide more detailed population data that describes the detained and committed populations respectively. Section IV contains the Division's parole data. A report summary is included below.

Detention:

Senate Bill 03-286 was signed into law on May 1, 2003. This legislation established a 'cap' or limit of 479 on the number of State funded detention beds. This legislation was implemented October 1, 2003. The FY 2000-01 detention average daily population (ADP) was 583.0, but since implementation, under current state law, the detention population can never exceed 479. Each of the State's 22 judicial districts has been allocated a portion of the 479 beds. Statutory language provides that districts may borrow beds within an established 'catchment' area. Statutes also contain provisions for emergency release of detained youth in the event that a district is unable to borrow a bed.

FY 2006-07 was the third full year of operation under the cap. Since FY 2003-04, when detention ADP reached a ten-year low, detention Length of Stay (LOS) has not seen much change and ADP experienced some slight changes. The average Length of Stay (LOS) for a youth in detention remained relatively stable at 14.0 days in FY 2006-07, a decrease of 0.7% from last year's 14.1 days. Detention ADP decreased 3% to 414.9, which marks the first year of decline following 2 years of growth. There were 10,591 new admissions to detention, which is an 18-year low, although there was only a 1% decrease in admissions between FY 2005-06 and FY 2006-07 and a 3% decrease in admissions between FY 2004-05 and FY 2005-06. Declines in detention admissions were expected following the implementation of the statewide capping legislation. Prior to the cap, local jurisdictions were given substantial discretion as to which youth could be admitted into detention. Currently, local jurisdictions still have this level of discretion, but now it must be balanced by the reality of a finite number of allocated beds. As a result, detention is now experiencing a marked reduction in usage particularly in the admission of truants, status offenders, and other less serious offenders.

Commitment:

In December 2006, Legislative Council Staff (LCS) and the Division of Criminal Justice (DCJ) released their FY 2006-07 projections. At this time, LCS projected a slight increase in ADP, while DCJ's projections were a bit more conservative, given the Continuum of Care (CofC) Initiative. One of the expected outcomes of the CofC Initiative was the gradual reduction of commitment ADP as youth transition from commitment placements into the community on parole. The impact of the CofC is reflected in the decrease of last year's commitment ADP. The average daily population (ADP) experienced a decrease (-28.5 ADP), from 1453.4 in FY 2005-06 to 1424.9 youth in FY 2006-07. This significant decrease can also be related to the decline in the number of new commitments in FY 2006-07.

New commitments decreased by 11% to 827 during FY 2006-07. The new commitment rate decreased to 15.7 committed youth per 10,000 Colorado youth, from 17.9 committed youth per 10,000 Colorado youth in FY 2005-06. For the past 10 years, the number of new commitments have fluctuated between 766 and 950 each year.

In FY 2006-07, the population of youth in assessment decreased by 27% to 67.3 ADP. The ADP in secure placement decreased minimally by 0.7% to 519.3. The ADP of youth in staff supervised placement experienced a slight decrease from 647.2 ADP to 644.9 ADP. The population of youth in community placement increased slightly by 3% to 170.8 ADP.

Parole:

The Legislative Council Staff (LCS) and the Division of Criminal Justice (DCJ) projected the parole population would continue to rise. LCS projected the parole population would increase 5.9% to 537.1 ADP. DCJ projected the parole population would increase 9.76% to 556.9 ADP. Although the increase was not as significant, DYC experienced a parole ADP increase of 3% from 508.7 ADP in FY 2005-06 to 522.6 ADP in FY 2006-07.

Parole populations may gradually increase because of the Division's Continuum of Care Initiative. As the Division begins to actively identify appropriate youth in committed placement and establish community-based services to address the youth's criminogenic needs, it is reasonable to expect

that this Initiative will yield more Parole Board referrals and ultimately an increased Parole ADP level.

Fiscal Year 2006-07 was the third full year following the implementation of Senate Bill 03-284, which shortened the mandatory parole length from nine to six months, effective May 1, 2003. However, since the passage of SB 03-284, the parole LOS has slightly exceeded the mandatory parole period of 6 months. For many high risk youth, the Parole Board has the statutory authority to extend parole for 90 days if determined to be “within the best interest of the juvenile and the public to do so”¹ or for an additional 15 months if there is a “finding of special circumstances” for youth adjudicated for certain offenses (e.g., violent offense, sex offenses, etc.)². However, in recent years parole LOS declined from 8.0 months in FY 2003-04 to 7.1 months in FY 2004-05 to 6.4 months in FY 2005-06. This decline was expected as a result of the legislation that reduced mandatory parole length of stay from nine to six months. Parole LOS increased slightly in FY 2006-07 to 6.8 months. In FY 2006-07, discharged youth rose 1% to 942 youth. The negligible change in parole discharges accompanied a minimal increase in parole ADP.

¹ 19-2-1002 (5)(a)(I), C.R.S.

² 19-2-1002 (5)(a)(II), C.R.S.

**Data based on new admissions in FY 2006-07 are not representative of the total detention population.*
**Data based on new commitments in FY 2006-07 are not representative of the total committed population.*

I. STATE TOTALS FY 2006-07

A. Juvenile Justice Filtering Process to Detention

- There were 10,591 new admissions to DYC Detention during FY 2006-07. This represents 2.0% of the 10-17 year old Colorado population, and it represents 23.5% of Colorado's juvenile arrests.
- Admissions are at an 18-year low. Detention Admissions dropped 1% since FY 2005-06. This is close to last year's decline of 3% and is a very slight decline in comparison to the 14% and 21% drops of the past few fiscal years. The number of new detention admissions is following a five-year trend of decline.

B. Juvenile Justice Filtering Process to Commitment

- There were 827 new commitments to DYC during FY 2006-07. This represents 0.2% of the 10-17 year old Colorado population, and it represents 5.7% of Colorado's 14,389 juvenile filings.
- This commitment rate has remained fairly constant for the past 10 fiscal years, as the State's youth population and the number of new commitments have experienced similar levels of growth.

C. Clients Served³

- There were 9,071 youth served in DYC programs during FY 2006-07, which reflects an unduplicated count of individual youth. There were 7,195 youth served in detention programs, 2,328 youth were served in commitment programs, and 1,908 youth were served in parole services.

D. DYC Population Summary

- There was an ADP of 414.9 detained youth, which marks the first year of decline following 2 years of growth.
- There was an ADP of 1,424.9, committed youth, which is a 28.5 ADP decline from last year.

³ Clients Served is an unduplicated count. Categorical totals are not a sum of individual program counts and are not available for all categories.

- Commitment ADP has increased steadily over the past 10 years; however, this is the first year of decline.
- There was an ADP of 522.6 paroled youth for FY 2006-07.
- There were 10,591 new admissions to detention, which is an 18-year low, although there was only a 1% decrease in admissions between FY 2005-06 and FY 2006-07 and a 3% decrease in admissions between FY 2004-05 and FY 2005-06.
- There were 827 new commitments in FY 2006-07.

II. DETENTION POPULATION Trends and Characteristics

A. Population Trends

- Fiscal year 2006-07 was the third year of operating under the statewide statutory cap of 479 youth. As a result of the provisions of SB 03-286, detention ADP is still much lower than it had been before the capping legislation. Detention ADP is 24% lower than it was five years ago. At 414.9, it is down 2.7% since last fiscal year.
- Detention Admissions are at an 18-year low, and at 10,591 are 35% lower than they were five years ago in FY 2001-02.
- Ninety-four percent of detained youth were held in State-Operated facilities, essentially the same percent as FY 2005-06. Since the detention cap was implemented, there has been a decreased reliance on Privately-Operated placements. Only 6% of this year's ADP was detained in a contracted secure of staff-secure facility.
- The average Length of Stay (LOS) for a youth in detention remained relatively the same at 14.0 days, a decrease of 0.7% from last year's 14.1 days. It is 11% below what it was five years ago. A decrease in LOS was anticipated because of the detention cap, corresponding to the decrease in detention ADP.

B. Population Characteristics

1. Gender

- The percent of male admissions decreased to 76% of the total detention population, which is a 3% decrease in the number of male new admissions between FY 2005-06 and FY 2006-07. The percent of female admissions increased to 24% of the total detention population, which is a 5% increase from the number of female new admissions last year.

2. Ethnicity

- Anglo-American youth (43%) have consistently represented the largest ethnic group in DYC detention facilities, followed by

Hispanic / Latino youth (38%), and African-American youth (16%).

3. Age

- The average age at admission in FY 2006-07 was 16 yrs, as it was in FY 2004-05 and has been for several years prior.
- The age distribution for FY 2006-07 is very similar to that of FY 2004-05. Seventeen-year olds represented the largest age group (28%), followed by 16 year olds (27%) and 15 year olds (24%).

4. Prior Admissions

- Sixty-two percent of the youth admitted to detention in FY 2006-07 had one or more prior detention admissions. This is the relatively the same percentage as last fiscal year, down only 1%.

III. COMMITMENT POPULATION

Trends and Characteristics

A. Population Trends

- The committed population experienced a decline across three categories. Commitment ADP experienced a 2% decrease since last fiscal year; clients served decreased by almost 3%; and new commitments decreased by 11%.
- Commitment length of stay (LOS) experienced a rise, increasing 4.4% to 19.0 months in FY 2006-07 from 18.2 months in FY 2005-06.

B. Population Characteristics⁴

1. Gender

- The percentage of male and female new commitments are down from last year. There was an 11% decrease in male new commitments, 821 compared to 729. There was a 13% decrease in female new commitments in FY 2006-07, 112 compared to 98.
- Females represent 12% and males represent 88% of the new commits for FY 2006-07, this is the same as last year.

⁴ Refers to youth who were newly committed during FY 2006-07, unless otherwise specified.

- The male ADP has not experienced much change since last year, only decreasing by 0.1%; however, the female ADP has decreased 15% since FY 2005-06.

2. Ethnicity

- The majority of new commitments have historically been Anglo, Hispanic/Latino and African American youth respectively, and this holds true for FY 2006-07. This year's ethnic distribution was 45% Anglo, 35% Hispanic and 16% African American.

3. Age

- The average age at commitment was 16.5 years, up from 16.4 last year. This figure has fluctuated between 16.4 and 16.5 over the past several years.
- Thirty-six percent of youth were 17 years old, 26% were 16 years old, and 16% were 15 years old. These proportions have not changed significantly in several years.

4. Other Characteristics

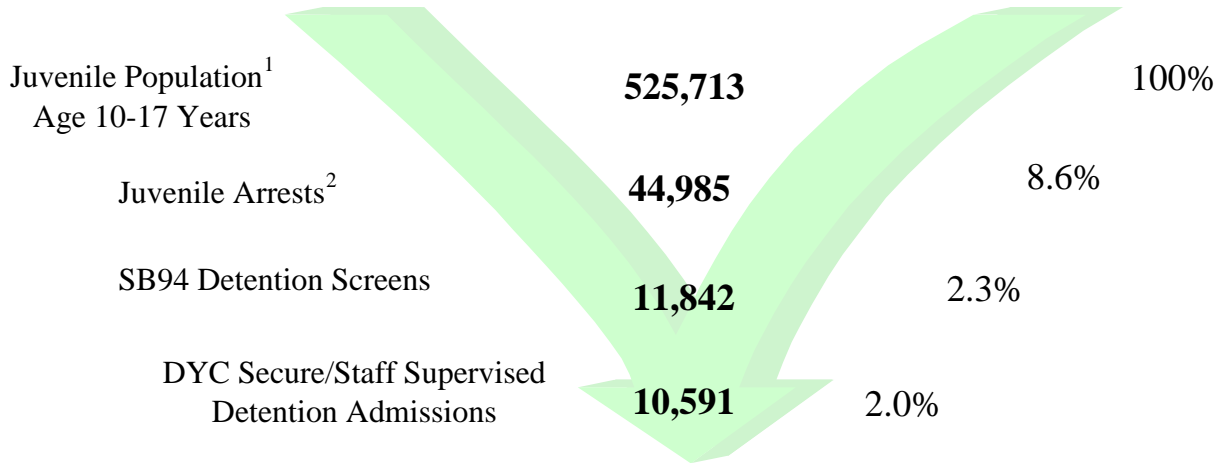
- Twenty-two percent of newly committed youth received mandatory sentences. Repeat offenders have decreased from 8% in FY 2004-05 and FY 2005-06 to 5% in FY 2006-07.
- The average age at first adjudication was 14.2 years for males and 14.5 years for females.
- Sixty-seven percent of youth had one or more out-of-home placements. This is a 3% increase from FY 2005-06.
- The percent of males and females with one prior out-of-home placement was similar, but 36% of males committed in FY 2006-07 had no prior out-of-home placements, while only 15% of females committed in FY 2006-07 had no prior out-of-home placements.
- The percent of females with a history of running away increased from 79% in FY 2005-06 to 88% in FY 2006-07. The percent of males with a runaway history remained the same, at 58%.
- The percent of newly committed youth in need of treatment level substance abuse services remained the same as the last two years at approximately 60%. The female population in need of treatment has increased slightly from 65% to 66%, and the male treatment population remained the same at 59%.
- Seventy-six percent of newly committed youth had one or more prior adjudications, which is higher than 69% in FY 2005-06.
- Sixty-one percent of youth were committed for felony offenses in FY 2006-07. This is only a slight increase from 60% for the past two fiscal years.
- There were some significant changes in regards to Mental Health Needs during the FY 2006-07. The percent of “High-Moderate to Severe” assessed mental health needs for males decreased from 60% in FY 2005-06 to 21% in FY 2006-07. The percent of “Low Moderate/None to Slight” assessed mental health needs for males increased from 40% in FY 2005-06 to 79% in FY 2006-07. The percent of “High-Moderate to Severe” assessed mental health needs for females decreased from 53% in FY 2005-06 to 30% in FY 2006-07 and “Low Moderate/None to Slight” assessed mental health needs increased from 47% in FY 2005-06 to 71% in FY 2006-07.

IV. PAROLE POPULATION Trends and Characteristics

- Parole ADP experienced an increase for the second time in the past 5 years coming in at 522.6. This is a 3% increase from last year's parole ADP of 508.7.
- Parole LOS increased from 6.4 months in FY 2005-06 to 6.8 months in FY 2006-07.
- Eighty-three percent of youth were discharged from parole into their homes (including foster homes, step parents, spouses, single parents, etc) during FY 2006-07. Eleven percent discharged directly into Adult Jail/ Corrections. This statistic has remained relatively stable over the past few years.

Fiscal Year 2006-07

Juvenile Justice Filtering Process to Detention



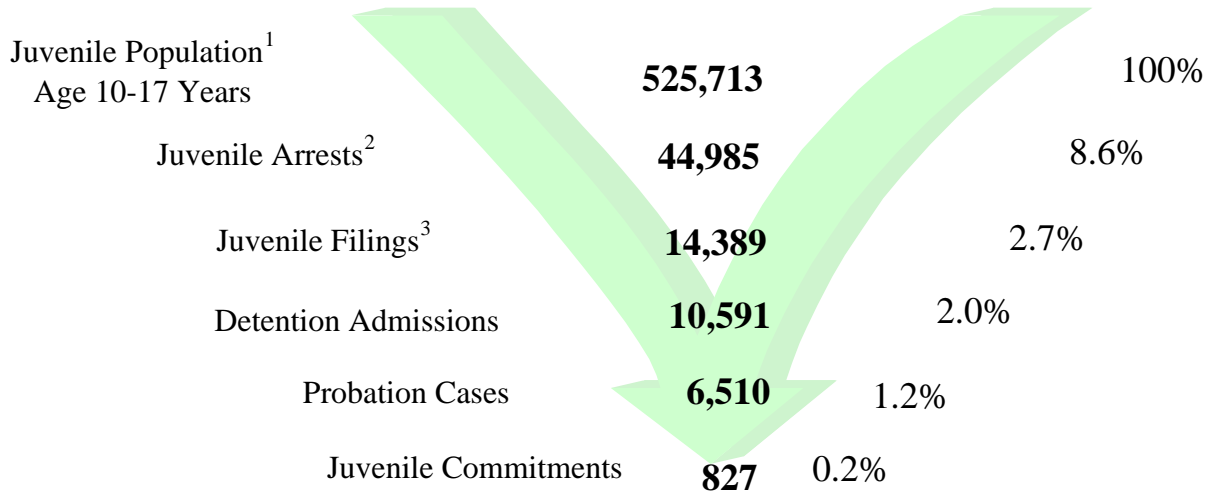
	FY2002-03	FY2003-04	FY2004-05	FY2005-06	FY2006-07
Age 10-17 population ¹	510,681	520,797	518,930	521,508	525,713
Juvenile Arrests ²	54,008	45,836	48,105	47,596	44,985
Arrests as % of population	10.6%	8.8%	9.3%	9.1%	8.6%
SB94 Detention Screens	12,105	12,692	12,607	12,453	11,842
Detention Admissions	14,059	11,148	10,970	10,698	10,591
Admissions as % of Population	2.8%	2.1%	2.1%	2.1%	2.0%

¹Colorado State Department of Local Affairs. Population data are reported for calendar years. Population estimates are based upon the 2000 census (<http://dola.colorado.gov/demog/demog.cfm>).

²Colorado Bureau of Investigations, *Crime in Colorado 2006*.

Fiscal Year 2006-07

Juvenile Justice Filtering Process to Commitment



	FY2002-03	FY2003-04	FY2004-05	FY2005-06	FY2006-07
Age 10-17 Population ¹	510,681	520,797	518,930	521,508	525,713
Juvenile Arrests ²	54,008	45,836	48,105	47,596	44,985
Arrests as % of population	10.6%	8.8%	9.3%	9.1%	8.6%
Juvenile Delinquency Filings ³	17,179	15,981	15,156	14,926	14,389
Juvenile Detention Admissions	14,059	11,148	10,970	10,698	10,591
Number of New Probation Cases (reg. & ISP) ³	8,250	7,222	6,543	6,826	6,510
Number of Commitments	824	924	950	933	827
Commitments as % of Population	0.2%	0.2%	0.2%	0.2%	0.2%

¹Colorado State Department of Local Affairs. Population data are reported for calendar years. Population estimates are based upon the 2000 census (<http://dola.colorado.gov/demog/demog.cfm>).

²Colorado Bureau of Investigations, *Crime in Colorado 2006*.

³Colorado Judicial Branch FY 2006-07 data.

ALL CLIENTS POPULATION DATA

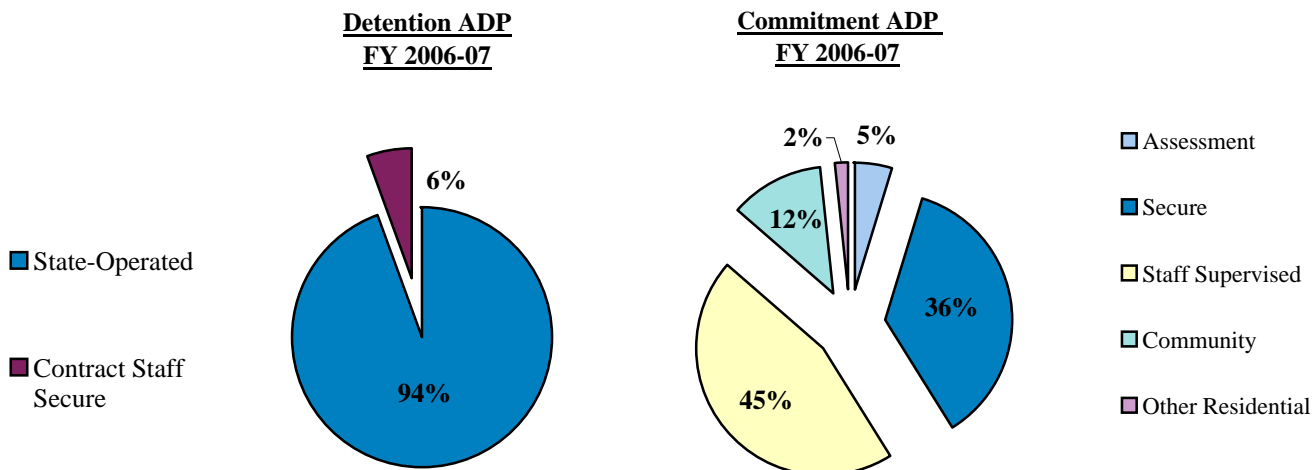
Fiscal Year 2006-07

DETAINED YOUTH	Clients Served¹	New Admits	ADP	LOS
State-Operated	6,948	9,941	391.3	14.1 days
Contract Staff Secure	551	650	23.6	13.0 days
Total Detained	7,195	10,591	414.9	14.0 days

COMMITTED YOUTH	Clients Served¹	ADP	LOS
Assessment	957	67.3	1.1 months
Secure	1,436	519.3	7.9 months
Staff Supervised	1,351	644.9	8.7 months
Community	614	170.8	2.2 months
Other Residential ²	N/A	22.6	N/A
Total Residential	2,328	1,424.9	19.0

PAROLED YOUTH	Clients Served¹	New Intakes	ADP	LOS
Total Paroled	1,908	938	522.6	6.8

STATEWIDE TOTAL	Clients Served¹	ADP	LOS
STATEWIDE TOTAL	9,071	2,362.4	25.9 months



¹Clients Served is an unduplicated count. Categorical totals are not a sum of individual program counts and are not available for all categories.

²Other Residential includes Group Homes, Job Corps, Hospitalizations, Shelter Care, etc.

NOTE: Throughout the Reference Manual, category sums may vary slightly from given totals due to rounding differences.

10 Year Detention Trends

Fiscal Year	Clients Served¹	Percentage Change +/-	New Admits	Percentage Change +/-	ADP²	Percentage Change +/-	LOS (Days)	Percentage Change +/-
1997-98	8,785	5.8%	15,428	5.3%	591.8	13.3%	13.9	6.9%
1998-99	8,924	1.6%	15,212	-1.4%	602.4	1.8%	14.6	5.0%
1999-00	8,799	-1.4%	15,294	0.5%	589.1	-2.2%	14.3	-2.1%
2000-01	8,899	1.1%	14,921	-2.4%	583.0	-1.0%	14.5	1.4%
2001-02	8,916	0.2%	16,310	9.3%	545.0	-6.5%	15.7	8.3%
2002-03	8,242	-7.6%	14,059	-13.8%	497.1	-8.8%	15.3	-2.5%
2003-04	7,290	-11.6%	11,148	-20.7%	396.2	-20.3%	12.8	-16.3%
2004-05	7,252	-0.5%	10,970	-1.6%	402.0	1.5%	13.1	2.3%
2005-06	7,215	-0.5%	10,698	-2.5%	426.3	6.0%	14.1	7.6%
2006-07	7,195	-0.3%	10,591	-1.0%	414.9	-2.7%	14.0	-0.7%

Fiscal Year 2006-07 was the third full year of detention operation under the legislative, statewide cap of 479 youth. The detention population decreased 3% from last year's ADP of 426.3, which brought the fiscal year average down to 414.9 youth. Ninety-four percent of detained youth were held in State-Operated facilities. Since the detention cap was implemented, there has been a decreased reliance on Privately-Operated placements. Only 6% of this year's ADP was detained in a contracted secure or staff-secure facility. The average length of stay (LOS) for a youth in detention remained relatively stable at 14.0. The number of clients served followed a five-year trend of decline, however the decrease of less than one percent for the past three years is markedly smaller than the eight and twelve percent decreases experienced in the first two years of the five-year trend. The number of new detention admissions are also following a five-year trend of decline. Smaller declines were experienced in Fiscal Year 2006-07 (1%), 2005-06 (3%) and 2004-05 (2%), while much larger declines of fourteen and twenty-one percent were seen in the two previous years. The number of new admissions to detention in FY 2006-07 hit an 18-year low. The number of new admits has not been this low since FY 1989-90, when there were 10,669 new detention admissions. Detention admission decreases were expected following the statewide capping legislation, as only the most serious youth offenders are held in detention, excluding the admission of truants, status offenders, and other less serious offenders.

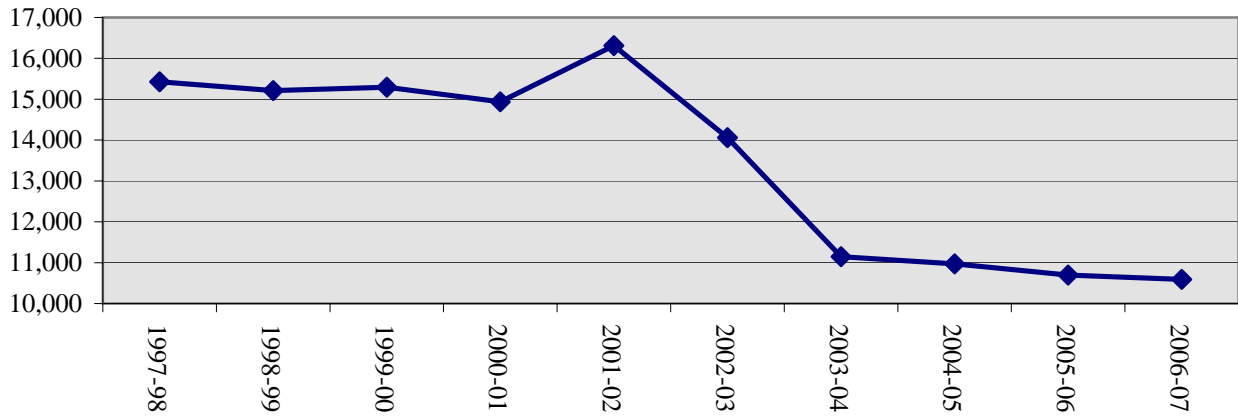
¹Clients served counts are unduplicated.

²The detention ADP includes youth in the Boot Camp / CAP program during FY 1996-97 through FY 2002-03.

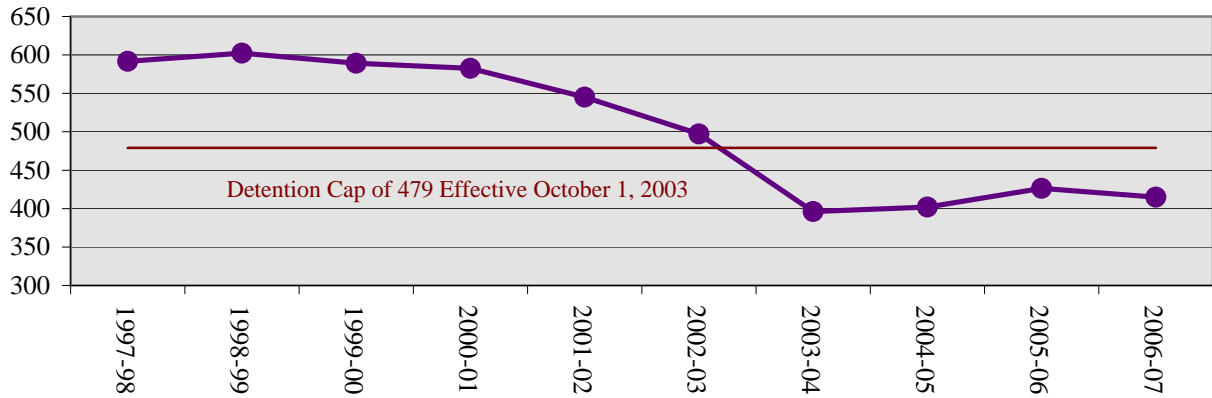
DETENTION POPULATION TRENDS

FY 1997-98 Through FY 2006-07

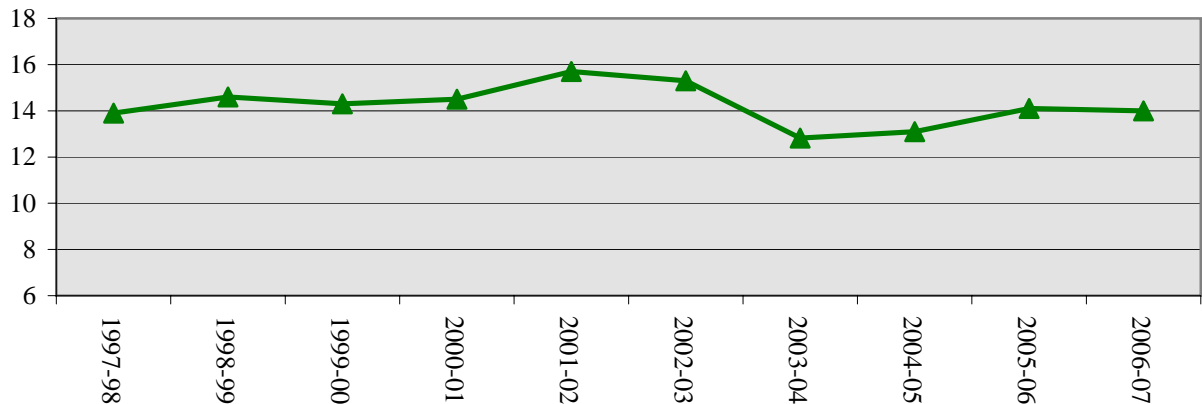
Trends in Detention Admissions



Trends in Detention ADP



Trends in Detention LOS (Days)



DETENTION
POPULATION BY PROGRAM

FY 2006-07

	Clients Served ¹	New Admits	ADP	LOS (Days)
<i>State Operated</i>				
Adams YSC	526	728	25.9	13.1
Gilliam YSC	1,196	1,426	63.4	16.0
Grand Mesa YSC	404	542	20.8	13.2
Marvin W. Foote YSC	1,605	1,816	86.6	17.3
Mount View YSC	1,067	1,098	51.1	16.3
Platte Valley YSC	1,259	1,854	63.4	12.2
Pueblo YSC	696	933	32.4	12.4
Spring Creek YSC	1,253	1,544	47.6	10.9
<i>Subtotal State Operated</i>	<i>6,948</i>	<i>9,941</i>	<i>391.3</i>	<i>14.1</i>
<i>Privately Operated</i>				
Brown Center	35	39	1.6	14.1
Emily Griffith	26	27	1.4	18.9
Hilltop Youth Services	36	39	2.5	20.5
Midway Remington	229	255	6.8	10.4
Prowers	9	9	0.8	31.1
Robert DeNier	131	171	7.3	14.4
Youthtrack Alamosa (SLV)	86	110	3.3	11.0
<i>Subtotal Privately Operated</i>	<i>551</i>	<i>650</i>	<i>23.6</i>	<i>13.0</i>
STATEWIDE TOTAL	7,195	10,591	414.9	14.0

¹ Clients Served is an unduplicated count. Categorical totals are not a sum of individual program Clients Served.

DETENTION POPULATION TRENDS

ADP BY PROGRAM

	FY 2002-03	FY 2003-04	FY 2004-05	FY 2005-06	FY 2006-07
<i>State Operated</i>					
Adams YSC	29.2	23.6	23.9	24.8	25.9
Gilliam YSC	73.7	62.6	62.8	65.6	63.4
Grand Mesa YSC	27.4	21.6	20.5	21.0	20.8
Marvin Foote YSC	68.5	74.6	80.8	87.1	86.6
Mount View YSC	49.6	47.8	47.3	52.7	51.1
Platte Valley YSC	70.4	62.2	61.4	64.4	63.4
Pueblo YSC	41.6	27.7	29.1	30.7	32.4
Spring Creek YSC	67.7	56.2	53.5	57.6	47.6
<i>Subtotal State Operated</i>	<i>428.2</i>	<i>376.4</i>	<i>379.2</i>	<i>403.8</i>	<i>391.3</i>
<i>Privately Operated</i>					
Brown Center	0.0	1.3	1.5	1.0	1.6
Colorado West	1.4	1.4	0.0	0.0	0.0
Dahlia Street	24.5	0.7	0.0	0.0	0.0
Emily Griffith	0.0	0.4	1.6	1.6	1.4
Gateway (Southern)	1.2	0.0	0.0	0.0	0.0
Hilltop Youth Services ¹	2.7	1.9	2.7	2.5	2.5
Midway Shelter	7.0	0.2	0.0	0.0	0.0
Midway Remmington	0.0	4.4	6.6	6.8	6.8
Prowers	0.8	0.6	0.8	0.8	0.8
Robert DeNier	12.0	7.4	7.1	7.6	7.3
Shiloh	0.5	0.0	0.0	0.0	0.0
Trailhead	1.2	0.0	0.0	0.0	0.0
Youthtrack Alamosa (SLV)	4.2	1.5	2.5	2.3	3.3
Youthtrack Fillmore	6.5	0.0	0.0	0.0	0.0
Community Accountability ²	7.1	0.0	0.0	0.0	0.0
<i>Subtotal Privately Operated</i>	<i>68.9</i>	<i>19.8</i>	<i>22.8</i>	<i>22.5</i>	<i>23.6</i>
STATEWIDE DETENTION	497.1	396.2	402.0	426.3	414.9

¹Includes Brown Center, Operated by Hilltop Youth Services, during FY 2002-03.

²The detention ADP includes youth in the Community Accountability Program during FY 2002-03.

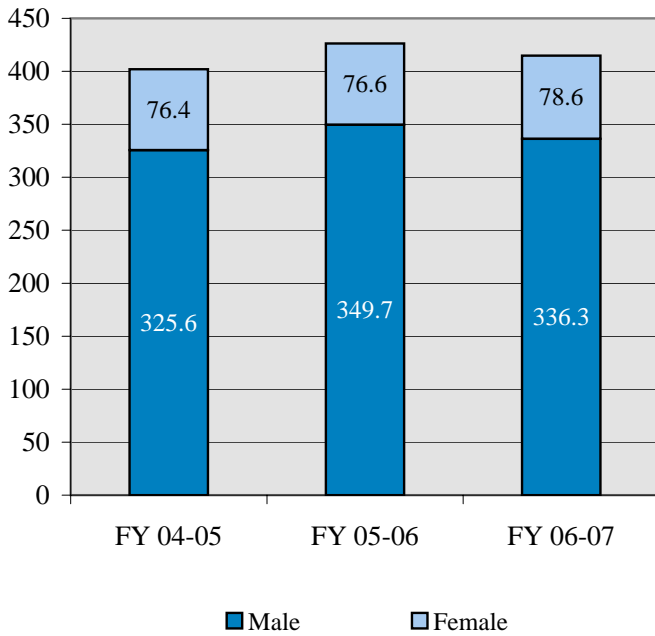
DETENTION
DEMOGRAPHIC TRENDS

	FY 2004-05				FY 2005-06				FY 2006-07			
	New Admits	%	ADP	LOS ¹	New Admits	%	ADP	LOS ¹	New Admits	%	ADP	LOS ¹
GENDER												
Male	8,385	76.4%	325.6	13.9	8,304	77.6%	349.7	14.8	8,082	76.3%	336.3	14.9
Female	2,585	23.6%	76.4	10.5	2,394	22.4%	76.6	11.4	2,509	23.7%	78.6	11.2
TOTAL	10,970	100%	402.0	13.1	10,698	100%	426.3	14.1	10,591	100%	414.9	14.0
ETHNICITY												
Anglo-American	4,866	44.3%	171.9	12.6	4,541	42.4%	169.3	13.2	4,514	42.6%	166.1	13.1
African-American	1,720	15.7%	65.9	13.8	1,720	16.1%	75.8	15.1	1,724	16.3%	75.9	15.9
Hispanic/Latino	4,034	36.8%	151.4	13.5	4,131	38.6%	169.3	14.6	4,012	37.9%	158.2	14.1
Native American	142	1.3%	6.4	16.3	151	1.4%	6.4	15.5	117	1.1%	5.9	17.9
Asian-American	64	0.6%	1.9	11.7	64	0.6%	2.6	14.0	107	1.0%	3.9	13.3
Other	144	1.3%	4.5	11.1	91	0.9%	2.8	11.0	117	1.1%	4.8	13.8
AGE												
9 Years	3	0.0%	0.0	3.3	0	0.0%	0.0	0.0	0	0.0%	0.0	0.0
10 Years	20	0.2%	0.3	5.7	17	0.2%	0.2	5.0	21	0.2%	0.2	3.7
11 Years	57	0.5%	1.7	9.3	73	0.7%	1.8	8.9	55	0.5%	1.0	6.5
12 Years	224	2.1%	7.3	11.9	223	2.1%	8.0	13.0	198	1.9%	8.0	13.7
13 Years	677	6.3%	22.9	12.0	656	6.2%	25.2	13.4	580	5.5%	21.9	13.5
14 Years	1,475	13.8%	55.0	13.3	1,449	13.7%	56.7	13.3	1,442	13.6%	57.0	14.0
15 Years	2,483	23.2%	90.1	13.1	2,429	22.9%	99.5	14.3	2,486	23.5%	95.1	13.7
16 Years	2,914	27.2%	113.5	13.9	2,821	26.6%	112.2	14.3	2,808	26.5%	113.1	14.4
17 Years	3,094	28.9%	110.6	12.8	3,015	28.5%	122.4	14.5	2,970	28.0%	118.3	14.3
18 Years	17	0.2%	0.4	6.7	11	0.1%	0.1	2.5	28	0.3%	0.1	1.7
19 Years and Older	6	0.1%	0.2	13.0	4	0.0%	0.3	24.8	3	0.0%	0.2	25.3
Data Not Available	0	0.0%	0.0	N/A	0	0.0%	0.0	N/A	0	0.0%	0.0	N/A
Average Age at Admission				16.0 Years				16.0 Years				16.0 Years
Prior Admissions												
None	4,078	38.1%	104.8	9.1	3,986	37.6%	117.0	10.5	4,038	38.1%	113.5	10.0
One	2,266	21.2%	87.7	13.8	2,303	21.7%	97.4	14.8	2,197	20.7%	89.6	14.5
Two or more	4,626	43.2%	209.5	16.3	4,409	41.6%	211.9	17.0	4,356	41.1%	211.8	17.5
Program Type												
State Operated	10,428	97.5%	379.2	13.0	10,182	96.1%	403.8	14.0	9,941	93.9%	391.3	14.1
Privately Operated	542	5.1%	22.8	15.2	516	4.9%	22.5	15.6	650	6.1%	23.6	13.0

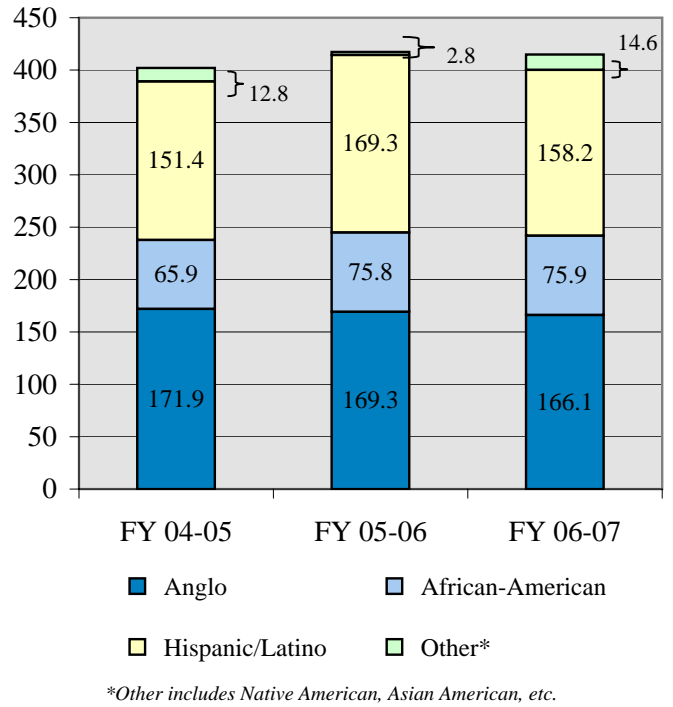
¹Detained LOS expressed in days.

DETENTION DEMOGRAPHIC TRENDS

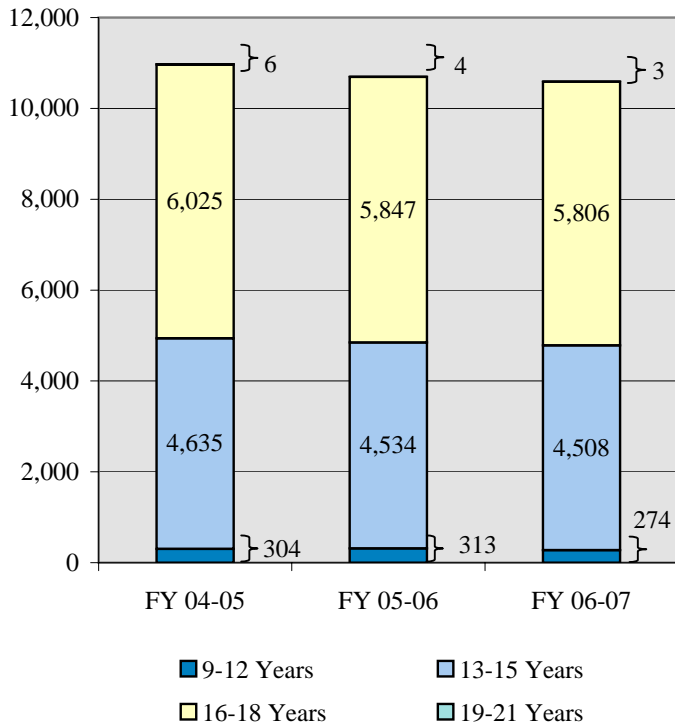
Detention ADP By Gender



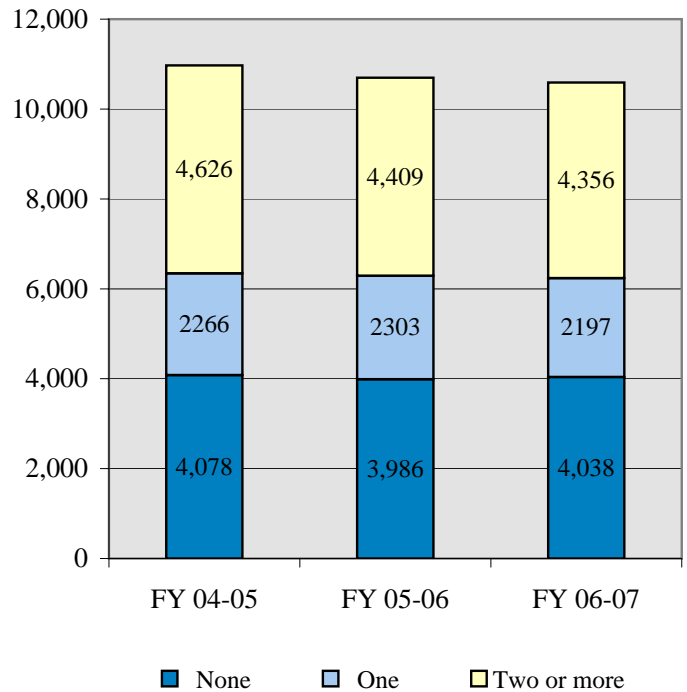
Detention ADP by Ethnicity



Detention Admissions by Age at Admissions



Detention Admissions by Number of Prior Admissions

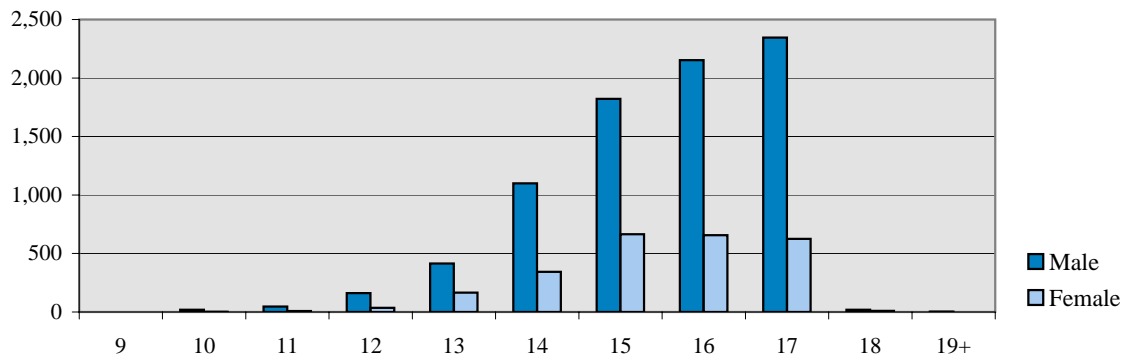


DETENTION

NEW ADMIT DEMOGRAPHIC TRENDS BY GENDER

	MALES						FEMALES					
	FY 2004-05		FY 2005-06		FY 2006-07		FY 2004-05		FY 2005-06		FY 2006-07	
	N	%	N	%	N	%	N	%	N	%	N	%
DEMOGRAPHIC DATA												
Ethnicity												
Anglo-American	3,578	42.7%	3,393	40.9%	3,288	40.7%	1,288	49.8%	1,148	48.0%	1,226	48.9%
African-American	1,364	16.3%	1,436	17.3%	1,416	17.5%	356	13.8%	284	11.9%	308	12.3%
Hispanic/Latino	3,183	38.0%	3,245	39.1%	3,123	38.6%	851	32.9%	886	37.0%	889	35.4%
Native American	110	1.3%	119	1.4%	93	1.2%	32	1.2%	32	1.3%	24	1.0%
Asian-American	52	0.6%	53	0.6%	80	1.0%	12	0.5%	11	0.5%	27	1.1%
Other	98	1.2%	58	0.7%	82	1.0%	46	1.8%	33	1.4%	35	1.4%
TOTAL NEW ADMISSIONS	8,385	100%	8,304	100%	8,082	100%	2,585	100%	2,394	100%	2,509	100%
Age at Admission												
9 Years	3	0.0%	0	0.0%	0	0.0%	0	0.0%	0	0.0%	0	0.0%
10 Years	17	0.2%	17	0.2%	19	0.2%	3	0.1%	0	0.0%	2	0.1%
11 Years	52	0.6%	65	0.8%	47	0.6%	5	0.2%	8	0.3%	8	0.3%
12 Years	163	1.9%	182	2.2%	162	2.0%	61	2.4%	41	1.7%	36	1.4%
13 Years	506	6.0%	513	6.2%	415	5.1%	171	6.6%	143	6.0%	165	6.6%
14 Years	1,067	12.7%	1,081	13.0%	1,099	13.6%	408	15.8%	368	15.4%	343	13.7%
15 Years	1,780	21.2%	1,808	21.8%	1,821	22.5%	703	27.2%	621	25.9%	665	26.5%
16 Years	2,293	27.3%	2,212	26.6%	2,152	26.6%	621	24.0%	609	25.4%	656	26.1%
17 Years	2,484	29.6%	2,413	29.1%	2,345	29.0%	610	23.6%	602	25.1%	625	24.9%
18 Years	15	0.2%	9	0.1%	19	0.2%	2	0.1%	2	0.1%	9	0.4%
19 Years and Older	5	0.1%	4	0.0%	3	0.0%	1	0.0%	0	0.0%	0	0.0%
Data Not Available	0	0.0%	0	0.0%	0	0.0%	0	0.0%	0	0.0%	0	0.0%
Average Age at Admission	16.1 Years		16.0 Years		16.0 Years		15.9 Years		15.9 Years		16.0 Years	
Prior Admissions												
None	2,978	35.5%	2,971	35.8%	3,036	37.6%	1,100	42.6%	1,015	42.4%	1,002	39.9%
One	1,715	20.5%	1,806	21.7%	1,673	20.7%	551	21.3%	497	20.8%	524	20.9%
Two or more	3,692	44.0%	3,527	42.5%	3,373	41.7%	934	36.1%	882	36.8%	983	39.2%

FY 2006-07 Age at Admission



COMMITMENT POPULATION TRENDS

Ten Year Commitment Trends

Fiscal Year	Clients Served¹	Percentage Change +/-	New Commits	Percentage Change +/-	Commitment ADP²	Percentage Change +/-	LOS (Months)	Percentage Change +/-
1997-98	2,046	8.2%	781	2.5%	973.5	4.8%	15.1	4.1%
1998-99	2,269	10.9%	878	12.4%	1,112.2	14.2%	15.6	3.3%
1999-00	2,544	12.1%	848	-3.4%	1,198.3	7.7%	15.5	-0.6%
2000-01	2,702	6.2%	766	-9.7%	1,251.8	4.5%	16.3	5.2%
2001-02	2,747	1.7%	843	10.1%	1,266.8	1.2%	17.7	8.6%
2002-03	2,689	-2.1%	824	-2.3%	1,327.8	4.8%	19.5	10.2%
2003-04	2,840	5.6%	924	12.1%	1,385.8	4.4%	18.9	-3.1%
2004-05	2,974	4.7%	950	2.8%	1,453.5	4.9%	18.8	-0.5%
2005-06	3,233	8.7%	933	-1.8%	1,453.4	0.0%	18.2	-3.2%
2006-07	3,149	-2.6%	827	-11.4%	1,424.9	-2.0%	19.0	4.4%

During FY 2006-07, the committed population experienced a year of decline in most areas, with the exception of length of stay. Commitment ADP experienced a decrease of 28.5 ADP, going from 1,453.4 in FY 2005-06 to 1,424.9 in FY 2006-07. Clients served decreased by 2.6%. This is the second decrease in the past 10 years, the first decrease of 2.1% occurred in FY 2002-03. The number of new commitments decreased by 11%, with 827 in FY 2006-07. For the past 10 years, the number of new commitments have increased and dropped, remaining between 766 and 950 each year. Commitment length of stay (LOS) experienced a 4.4% increase, from 18.2 months in FY 2005-06 to 19.0 months in FY 2006-07. This is the first year of LOS increase, after experiencing three consecutive years of decline. It is close to the 10-year high of 19.5 in FY 2002-03.

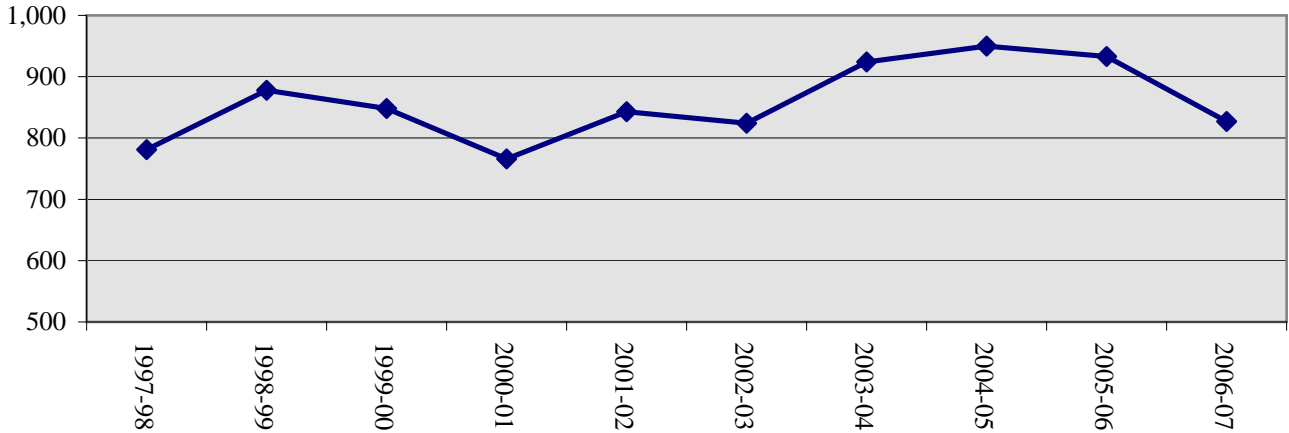
¹Clients Served is an unduplicated count.

²Commitment ADP includes secure, staff-supervised, and community based residential treatment programs.

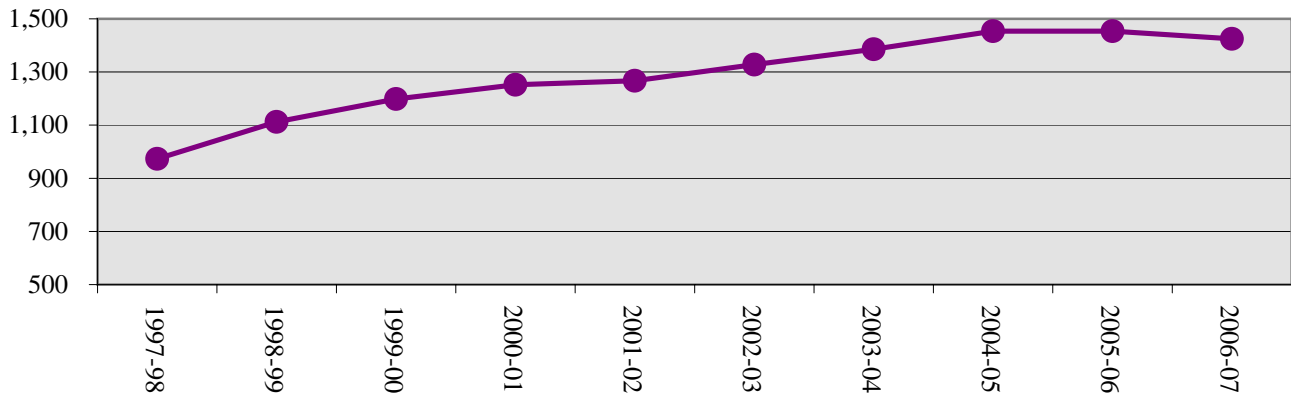
COMMITMENT POPULATION TRENDS

FY 1997-98 Through FY 2006-07

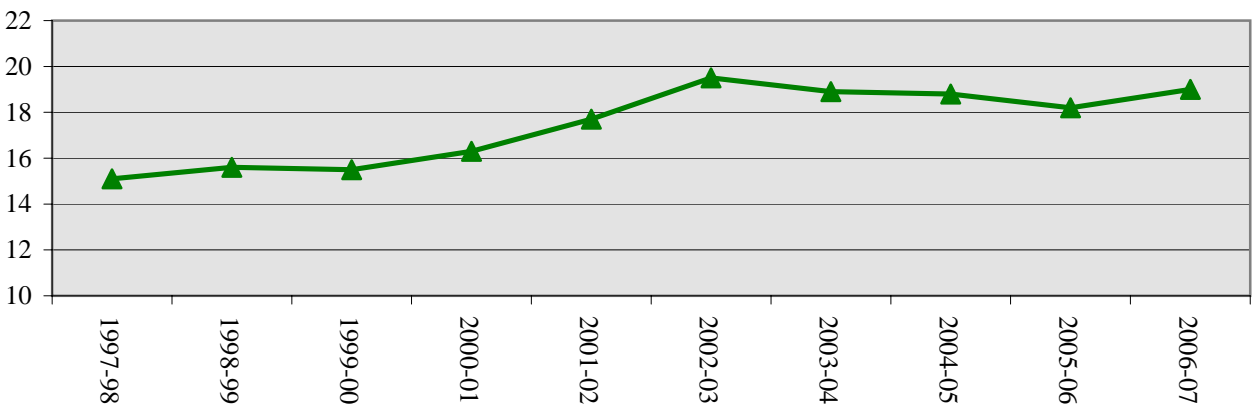
Trends in New Commitments



Trends in Commitment ADP



Trends in Commitment LOS (Months)



COMMITMENT
POPULATION BY PROGRAM

FY 2006-07

	Clients Served ¹	ADP
Assessment		
Grand Mesa YSC	85	4.8
Mount View YSC	344	17.2
Platte Valley YSC	266	15.0
Ridge View YSC	202	17.3
Robert Denier YSC	27	1.7
Spring Creek YSC	219	11.3
Zeb Pike YSC	1	0.0
Total Assessment	957	67.3
Secure		
<i>State Operated</i>		
Grand Mesa YSC	156	35.4
Lookout Mountain YSC	378	211.9
Marvin W. Foote YSC	250	20.4
Mount View YSC	381	56.5
Platte Valley YSC	336	54.9
Sol Vista YSC	22	11.6
Spring Creek YSC	207	34.9
Zeb Pike YSC	74	39.9
<i>Subtotal State Operated</i>	<i>1,380</i>	<i>465.4</i>
<i>Privately Operated</i>		
Betty K. Marler Center	83	39.2
Robert Denier YSC	44	14.8
<i>Subtotal Privately Operated</i>	<i>127</i>	<i>53.9</i>
Total Secure	1,436	519.3
Staff-Supervised (Contract)		
Alternative Homes for Youth	8	1.5
Brown Center	14	2.4
Cedar Springs	47	8.5
Childrens Ark	15	4.5
Devereux Cleo Wallace	72	23.7
Griffith Centers - Grand Ave.	14	5.3
Griffith Centers for Children (SR)	48	13.1
Griffith Centers for Children (WR)	11	3.6
El Pueblo Ranch	24	5.3
Excelsior Youth Center	4	1.1
Glen Mills Schools	2	0.7
Hilltop	58	14.2
Jefferson Hills	161	42.8
Jefferson Hills Aurora	219	63.9
Kidz Ark	11	5.0
Mountain Star Center	13	4.6
Ridgeview YSC	783	412.9
Southern Peaks	86	27.9
Turning Point	16	3.9
Total Staff-Supervised (Contract)	1,351	644.9

¹Clients Served is an unduplicated count. Categorical totals are not a sum of individual program counts and are not available for all categories.

COMMITMENT POPULATION

BY PROGRAM

FY 2006-07

	Clients Served ¹	ADP
Community (Contract)		
Alternative Youth Adventures	169	17.0
Boulder Community Treatment Center	3	0.7
Community Corrections & Work Release	5	1.5
Dale House	44	11.7
Daybreak-Princeton	22	4.8
DAYS	41	10.9
Garfield County Community Corrections	1	0.2
Griffith Centers for Children (SR)	27	7.1
Griffith Center - Chins Up	1	0.1
Gateway	3	0.4
Harmony Host Homes Inc.	1	0.2
Job Corps	9	3.3
Kidz Ark New Raymer Ranch	1	0.1
Longmont Community Treatment Center	1	0.0
Lost and Found - Arvada	20	4.1
Lost and Found - Morrison	17	3.3
Lost and Found - Independent Living	4	0.6
Maple Star Colorado	2	0.5
Marilee Center	17	3.0
Mt. Evans Qualifying House	27	7.3
Reflections for Youth (RFY) Prairie View	8	2.0
ROP - Canyon State Academy	1	0.7
Sobriety House	1	0.2
Southwest Colorado Community Corrections	1	0.2
Synergy	32	6.1
Third Way Center	16	4.6
Third Way Center - Pontiac	N/A	5.5
Third Way Center - York	25	3.8
Third Way Center - Lincoln	21	4.3
Turning Point	1	0.0
Turning Point Center - Youth and Family	98	20.8
Turning Point Center - Youth and Family Dev	6	1.5
Turning Point - Mathews St.	29	6.3
Youthtrack Jeffco	35	8.0
Youthtrack San Louis Valley	9	2.4
Youthtrack Work and Learn	49	11.5
Youth Ventures ²	60	16.3
Total Community (Contract)	614	170.8
Other Residential³		
	N/A	22.6

STATEWIDE COMMITMENT	2,328	1,424.9
-----------------------------	--------------	----------------

¹Clients Served is an unduplicated count. Categorical totals are not a sum of individual program counts and are not available for all categories.

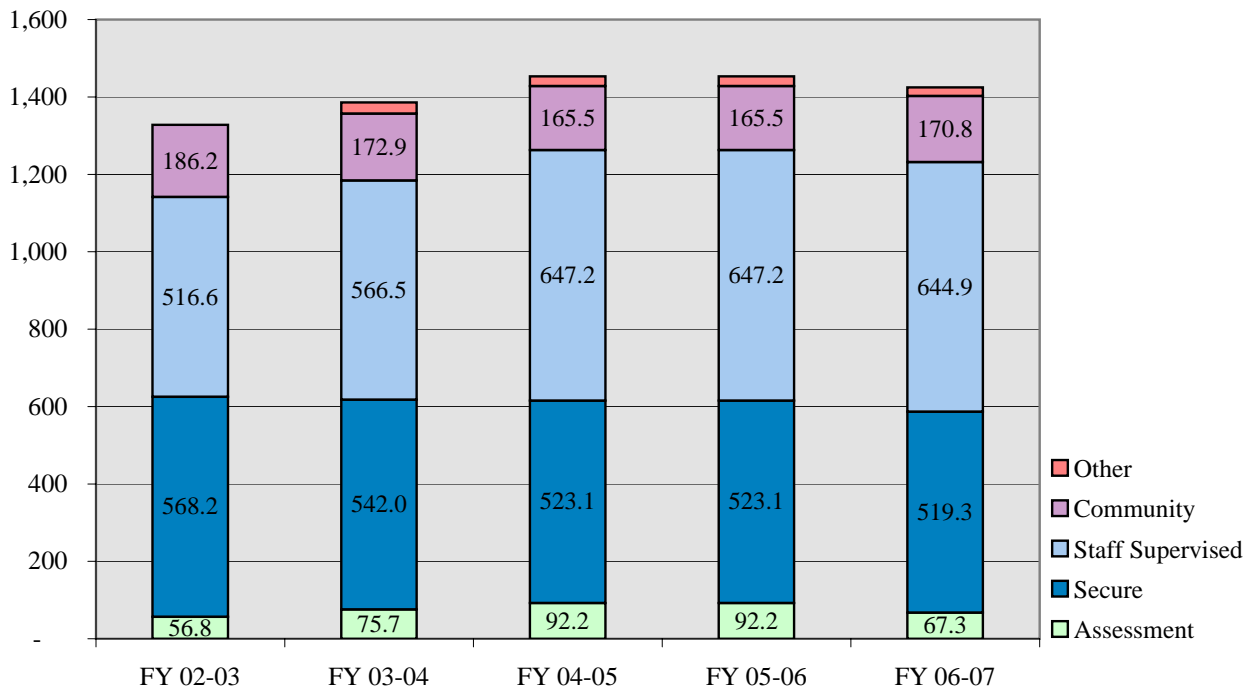
²Represents a sum of two or more program types or locations

³Other Residential includes Group Homes, Job Corps, Hospitalizations etc.

COMMITMENT POPULATION TRENDS
AVERAGE DAILY POPULATION

	FY 2002-03	FY 2003-04	FY 2004-05	FY 2005-06	FY 2006-07
Assessment	56.8	75.7	72.0	92.2	67.3
Secure	568.2	542.0	498.7	523.1	519.3
Staff Supervised	516.6	566.5	650.2	647.2	644.9
Community	186.2	172.9	203.1	165.5	170.8
Other Residential ¹	0.0	28.8	29.5	25.4	22.6
Total Commitment ADP	1,327.8	1,385.8	1,453.5	1,453.4	1,424.9

Commitment ADP



¹Other Residential includes Group Homes, Job Corps, Hospitalizations etc.

COMMITMENT
DEMOGRAPHIC TRENDS

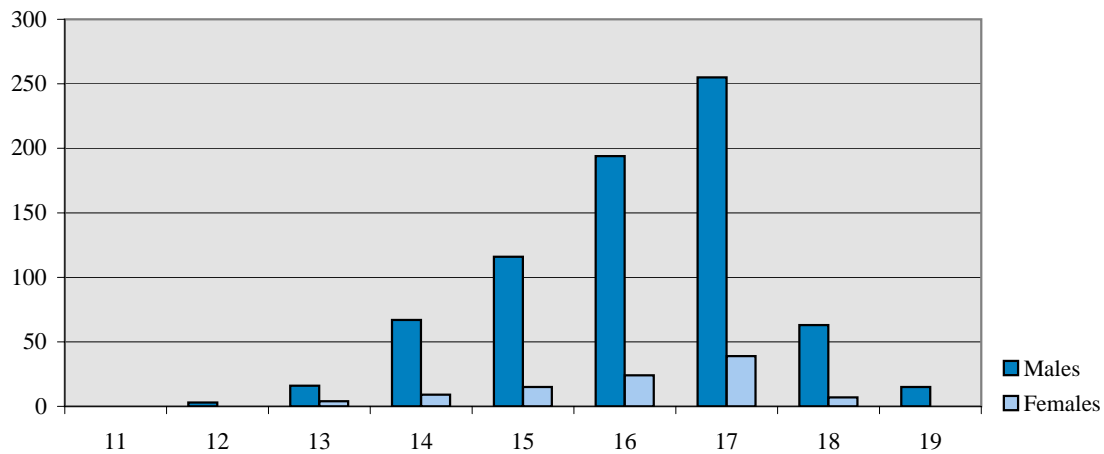
	FY 2004-05			FY 2005-06			FY 2006-07		
	New Commits	%	ADP	New Commits	%	ADP	New Commits	%	ADP
GENDER									
Male	810	85.3%	1,271.2	821	88.0%	1,268.4	729	88.1%	1,266.9
Female	140	14.7%	182.3	112	12.0%	185.0	98	11.9%	158.0
TOTAL	950	100.0%	1,453.5	933	100.0%	1,453.4	827	100.0%	1,424.9
ETHNICITY									
Anglo-American	417	43.9%	673.0	374	40.1%	632.2	374	45.2%	597.8
African-American	160	16.8%	258.3	167	17.9%	262.5	134	16.2%	262.8
Hispanic/Latino	339	35.7%	473.0	361	38.7%	514.3	290	35.1%	515.7
Native American	22	2.3%	26.9	22	2.4%	25.9	13	1.6%	30.5
Asian-American	4	0.4%	12.4	3	0.3%	7.3	7	0.8%	6.1
Other	8	0.8%	10.0	6	0.6%	11.2	9	1.1%	12.0
AGE¹									
11 Years	0	0.0%	0.0	1	0.1%	0.0	0	0.0%	0.0
12 Years	6	0.6%	0.1	6	0.6%	0.3	3	0.4%	12.6
13 Years	30	3.2%	12.2	24	2.6%	5.0	20	2.4%	48.2
14 Years	83	8.7%	33.9	92	9.9%	45.2	76	9.2%	156.4
15 Years	183	19.3%	93.0	179	19.2%	110.1	131	15.8%	290.4
16 Years	256	26.9%	247.9	240	25.7%	213.9	218	26.4%	365.4
17 Years	325	34.2%	376.5	341	36.5%	376.4	294	35.6%	458.6
18 Years	53	5.6%	426.4	42	4.5%	439.4	70	8.5%	80.2
19 Years or Older	14	1.5%	263.4	8	0.9%	263.1	15	1.8%	13.1
Average Age at Commitment:	16.5 Years			16.4 Years			16.5 Years		
Commitments per 10,000 Juvenile	17.7			17.9			15.7		

NEW COMMITMENT TRENDS

BY GENDER

	MALES						FEMALES					
	FY 2004-05		FY 2005-06		FY 2006-07		FY 2004-05		FY 2005-06		FY 2006-07	
	N	%	N	%	N	%	N	%	N	%	N	%
DEMOGRAPHIC DATA¹												
Ethnicity												
Anglo:	343	42.3%	316	38.5%	327	44.9%	74	52.9%	58	51.8%	47	48.0%
African-American:	137	16.9%	151	18.4%	122	16.7%	23	16.4%	16	14.3%	12	12.2%
Hispanic/Latino:	304	37.5%	327	39.8%	255	35.0%	35	25.0%	34	30.4%	35	35.7%
Native American:	16	2.0%	20	2.4%	12	1.6%	6	4.3%	2	1.8%	1	1.0%
Asian-American:	4	0.5%	2	0.2%	6	0.8%	0	0.0%	1	0.9%	1	1.0%
Other:	6	0.7%	5	0.6%	7	1.0%	2	1.4%	1	0.9%	2	2.0%
TOTAL NEW COMMITMENTS	810	100%	821	100%	729	100%	140	100%	112	100%	98	100%
Age												
11 Years	0	0.0%	1	0.1%	0	0.0%	0	0.0%	0	0.0%	0	0.0%
12 Years	6	0.7%	6	0.7%	3	0.4%	0	0.0%	0	0.0%	0	0.0%
13 Years	27	3.3%	18	2.2%	16	2.2%	3	2.1%	6	5.4%	4	4.1%
14 Years	71	8.8%	82	10.0%	67	9.2%	12	8.6%	10	8.9%	9	9.2%
15 Years	151	18.6%	159	19.4%	116	15.9%	32	22.9%	20	17.9%	15	15.3%
16 Years	206	25.4%	209	25.5%	194	26.6%	50	35.7%	31	27.7%	24	24.5%
17 Years	290	35.8%	298	36.3%	255	35.0%	35	25.0%	43	38.4%	39	39.8%
18 Years	46	5.7%	40	4.9%	63	8.6%	7	5.0%	2	1.8%	7	7.1%
19 Years	13	1.6%	8	1.0%	15	2.1%	1	0.7%	0	0.0%	0	0.0%
Average Age at Commitment	16.5 Yrs		16.5 Yrs		16.7 Yrs		16.4 Yrs		16.5 Yrs		16.6 Yrs	

FY 2006-07 Age at Commitment



¹Data based on new commitments.

**NEW COMMITMENT TRENDS
BY GENDER**

	MALES						FEMALES					
	FY 2004-05		FY 2005-06		FY 2006-07		FY 2004-05		FY 2005-06		FY 2006-07	
	N	%	N	%	N	%	N	%	N	%	N	%
NEW COMMITMENT PROFILE												
Prior Adjudications												
None	216	26.7%	241	29.4%	167	22.9%	71	50.7%	48	42.9%	29	29.6%
One	253	31.2%	245	29.8%	243	33.3%	36	25.7%	41	36.6%	41	41.8%
Two or more	341	42.1%	335	40.8%	319	43.8%	33	23.6%	23	20.5%	28	28.6%
Data Not Available	0	0.0%	0	0.0%	0	0.0%	0	0.0%	0	0.0%	0	0.0%
TOTAL NEW COMMITMENTS	810	100%	821	100%	729	100%	140	100%	112	100%	98	100%
Prior Out-of-Home Placements												
None	275	34.0%	315	38.4%	260	35.7%	24	17.1%	21	18.8%	15	15.3%
One	190	23.5%	198	24.1%	190	26.1%	29	20.7%	22	19.6%	25	25.5%
Two or more	345	42.6%	308	37.5%	279	38.3%	87	62.1%	69	61.6%	58	59.2%
Runaway History¹												
No runaway history	302	37.3%	302	36.8%	306	42.0%	25	17.9%	22	19.6%	12	12.2%
Runaway history	481	59.4%	474	57.7%	423	58.0%	114	81.4%	88	78.6%	86	87.8%
Data Not Available	27	3.3%	45	5.5%	0	0.0%	1	0.7%	2	1.8%	0	0.0%
Assessed Substance Abuse Counseling Needs²												
Prevention	119	14.7%	122	14.9%	114	15.6%	16	11.4%	6	5.4%	9	9.2%
Intervention	197	24.3%	217	26.4%	186	25.5%	27	19.3%	33	29.5%	24	24.5%
Treatment	467	57.7%	481	58.6%	427	58.6%	96	68.6%	73	65.2%	65	66.3%
Data Not Available	27	3.3%	1	0.1%	2	0.3%	1	0.7%	0	0.0%	0	0.0%
Assessed Mental Health Needs³												
High-Moderate to Severe	385	49.2%	490	60.2%	147	20.8%	79	60.3%	58	52.7%	28	29.5%
Low Moderate/None to Slight	398	50.8%	324	39.8%	561	79.2%	52	39.7%	52	47.3%	67	70.5%
Data Not Available	27	N/A	7	N/A	21	N/A	9	N/A	2	N/A	3	N/A
Average Age at First Adjudication:	13.8		13.8		14.2		14.5		14.3		14.5	

¹Refers to running away from a secure or nonsecure placement as well as from home during the 12 months prior to commitment.

²Substance abuse history and treatment needs are assessed within one month of commitment. Youth with minimal substance abuse history and/or treatment needs are identified for prevention services whereas those reporting the greatest history of abuse and treatment needs are targeted for substance abuse treatment services.

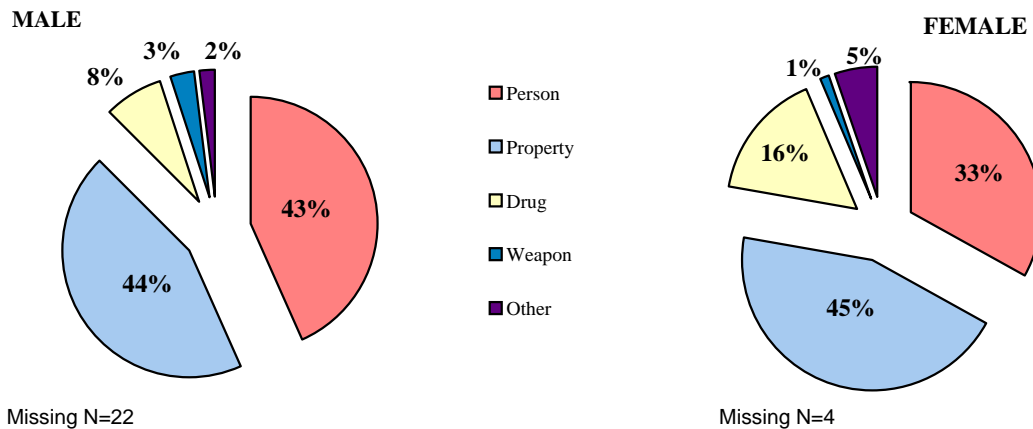
³Colorado Client Assessment Record used to assess mental health needs within one month of commitment. Percentages are based on total New Commitment CCARs given and do not include missing data.

NEW COMMITMENT TRENDS

BY GENDER

	MALES						FEMALES					
	FY 2004-05		FY 2005-06		FY 2006-07		FY 2004-05		FY 2005-06		FY 2006-07	
	N	%	N	%	N	%	N	%	N	%	N	%
NEW COMMITMENT DATA												
Offense Type												
Person Felony	148	18.3%	169	20.6%	165	22.6%	18	12.9%	10	8.9%	3	3.1%
Person Misdemeanor	144	17.8%	137	16.7%	141	19.3%	32	22.9%	20	17.9%	28	28.6%
Property Felony	289	35.7%	272	33.1%	238	32.6%	35	25.0%	32	28.6%	24	24.5%
Property Misdemeanor	61	7.5%	71	8.6%	74	10.2%	23	16.4%	21	18.8%	18	18.4%
Drug Felony	57	7.0%	50	6.1%	52	7.1%	11	7.9%	12	10.7%	14	14.3%
Drug Misdemeanor	7	0.9%	7	0.9%	2	0.3%	2	1.4%	1	0.9%	1	1.0%
Weapons Felony	10	1.2%	9	1.1%	10	1.4%	1	0.7%	2	1.8%	1	1.0%
Weapons Misdemeanor	11	1.4%	15	1.8%	11	1.5%	3	2.1%	1	0.9%	0	0.0%
Other	41	5.1%	40	4.9%	14	1.9%	9	6.4%	7	6.3%	5	5.1%
Data Not Available	42	5.2%	51	6.2%	22	3.0%	6	4.3%	6	5.4%	4	4.1%
TOTAL NEW COMMITMENTS	810	100%	821	100%	729	100%	140	100%	112	100%	98	100%
Sentence Type												
Non-Mandatory	583	72.0%	585	71.3%	518	71.1%	118	84.3%	97	86.6%	76	77.6%
Mandatory	128	15.8%	143	17.4%	167	22.9%	16	11.4%	11	9.8%	18	18.4%
Repeat	72	8.9%	68	8.3%	34	4.7%	4	2.9%	3	2.7%	4	4.1%
Violent	5	0.6%	9	1.1%	2	0.3%	1	0.7%	0	0.0%	0	0.0%
Aggravated Juvenile	14	1.7%	10	1.2%	8	1.1%	0	0.0%	1	0.9%	0	0.0%
Data Not Available	8	1.0%	6	0.7%	0	0.0%	1	0.7%	0	0.0%	0	0.0%

FY 2006-07 Offense Type¹

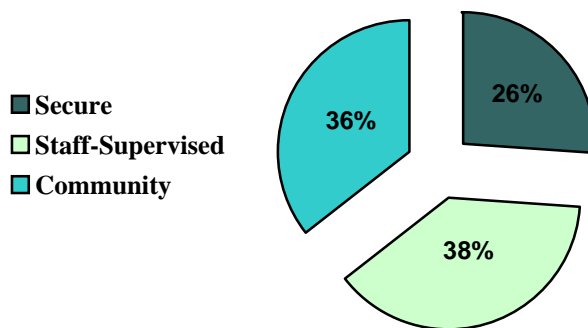


¹Felony and Misdemeanor counts are combined

COMMITMENT
COMMITMENT CLASSIFICATION

COMMITMENT CLASSIFICATION	FY 2004-05		FY 2005-06		FY 2006-07	
	N	%	N	%	N	%
Secure	226	23.8%	249	26.7%	215	26.0%
Staff-Supervised	364	38.3%	370	39.7%	314	38.0%
Community	335	35.3%	288	30.9%	293	35.4%
Data Not Available	25	2.6%	26	2.8%	5	0.6%
Total	950	100%	933	100%	827	100%

FY 2006-07 Initial Commitment Classification



Missing N=26

Offense Severity Score

Serious Person: 8+	16	17	18	19	20
Major Property, Lesser Person: 3 - 7	11	12	13	14	15
Minor Property: 1 - 2	6	7	8	9	10
Other Less Serious: 0	1	2	3	4	5
	1-3	4-7	8-10	11-12	13-14

Recidivism Risk Score

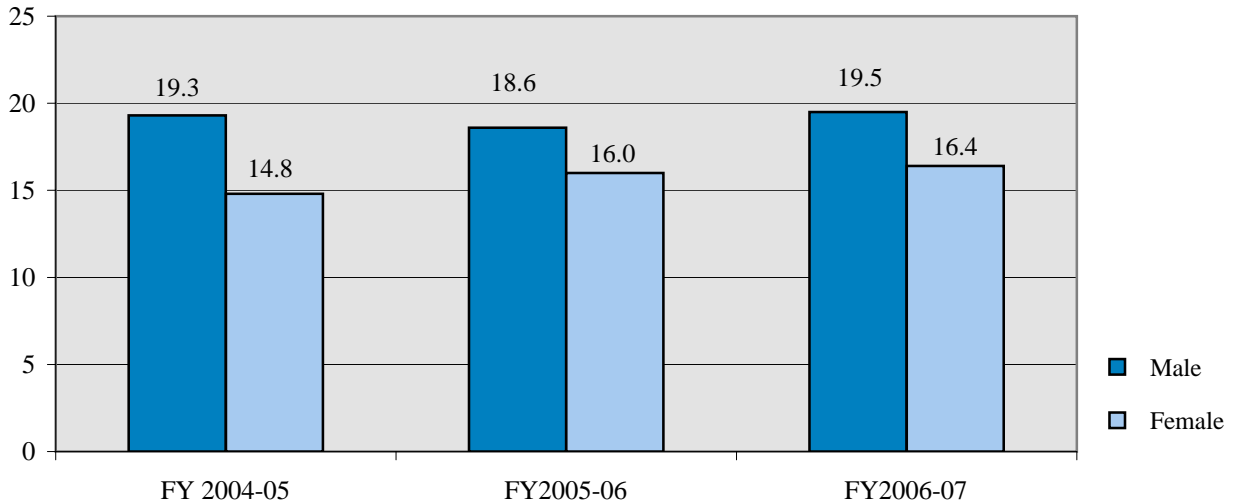


COMMITMENT
LENGTH OF STAY TRENDS

Commitment LOS

	FY 2004-05	FY 2005-06	FY 2006-07
GENDER			
Male	19.3	18.6	19.5
Female	14.8	16.0	16.4
TOTAL Commitment LOS	18.8	18.2	19.0
ETHNICITY			
Anglo-American	18.5	17.7	19.5
African-American	19.7	19.1	19.4
Hispanic/Latino	18.9	18.4	18.2
Native American	19.6	17.5	18.5
Asian-American	16.3	19.7	26.8
Other	3.7	14.0	17.8
AGE¹			
11 Years	9.2	0.5	0.0
12 Years	28.5	24.3	35.9
13 Years	30.6	20.6	27.8
14 Years	23.7	19.7	23.7
15 Years	20.6	20.7	20.6
16 Years	17.9	19.1	18.8
17 Years	16.3	15.6	16.7
18 Years	16.2	15.2	15.9
19 Years	17.3	14.6	11.9
20 Years	N/A	N/A	N/A

Commitment LOS



¹ Refers to Age at Commitment

PAROLE TRENDS

	FY 2004-05			FY 2005-06			FY 2006-07		
	ADP	%	LOS ¹	ADP	%	LOS ¹	ADP	%	LOS ¹
DYC REGION									
Central	206.5	42.1%	7.1	209.2	41.1%	6.2	224.6	43.0%	6.6
Northeast	113.7	23.2%	6.9	129.4	25.4%	6.4	144.1	27.6%	6.8
Southern	98.2	20.0%	7.1	100.1	19.7%	6.7	92.1	17.6%	6.9
Western	72.0	14.7%	7.4	70.0	13.8%	6.9	61.7	11.8%	7.3
Data Not Available	0.0	0.0%	N/A	0.0	0.0%	N/A	0.0	0.0%	N/A
TOTAL	490.3	100%	7.1	508.7	100%	6.4	522.6	100%	6.8
GENDER									
Male	433.7	88.5%	7.3	438.1	86.1%	6.6	450.2	86.1%	6.8
Female	56.6	11.5%	5.9	70.7	13.9%	5.7	72.4	13.9%	6.5
ETHNICITY									
Anglo American	230.4	47.0%	7.3	240.6	47.3%	6.5	237.8	45.5%	6.9
African-American	80.8	16.5%	7.2	79.3	15.6%	6.2	85.8	16.4%	6.3
Hispanic/Latino	166.5	34.0%	7.0	170.8	33.6%	6.6	185.2	35.4%	6.8
Native American	6.7	1.4%	6.6	10.4	2.0%	5.1	9.1	1.7%	7.9
Asian-American	5.2	1.1%	6.0	3.2	0.6%	7.5	2.9	0.6%	5.0
Other	0.6	0.1%	N/A	4.3	0.8%	6.0	1.8	0.3%	6.0
AGE²									
12 Years	0.0	0.0%	6.1	0.0	0.0%	N/A	0.0	0.0%	N/A
13 Years	0.6	0.1%	12.0	0.0	0.0%	8.4	0.5	0.1%	7.8
14 Years	1.3	0.3%	9.2	2.7	0.5%	7.1	3.5	0.7%	13.6
15 Years	8.8	1.8%	10.0	13.5	2.6%	6.7	21.0	4.0%	6.7
16 Years	33.2	6.8%	9.3	42.8	8.4%	7.1	41.0	7.9%	7.7
17 Years	83.2	17.0%	6.8	90.9	17.9%	7.2	87.0	16.6%	7.0
18 Years	144.5	29.5%	6.7	155.1	30.5%	6.4	160.2	30.7%	6.6
19 Years and older	218.6	44.6%	6.2	203.8	40.1%	6.3	209.4	40.1%	6.0

¹Parole LOS expressed in months.

²LOS for each age category corresponds to age at the time of parole. ADP figures are based on the youth's age on the last day of the fiscal year.

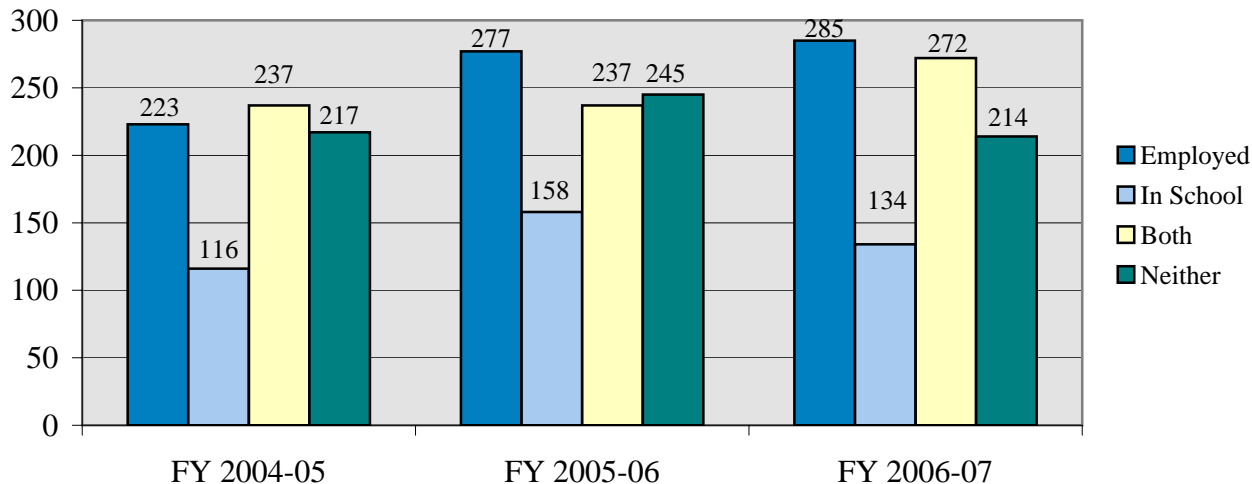
DISCHARGE TRENDS

	FY 2004-05		FY 2005-06		FY 2006-07	
	N	%	N	%	N	%
DISCHARGED YOUTH						
DISCHARGE PLACEMENT						
Adult Jail/ Corrections	96	11.6%	120	12.9%	100	10.6%
Home ¹	685	82.4%	765	82.3%	782	83.0%
Group Living	9	1.1%	9	1.0%	16	1.7%
Other Placement	39	4.7%	31	3.3%	35	3.7%
Escape	2	0.2%	3	0.3%	3	0.3%
Data Not Available	0	0.0%	1	0.1%	6	0.6%
TOTAL	831	100%	929	100%	942	100.0%

JOB/ SCHOOL STATUS AT DISCHARGE						
Employed Only	223	26.8%	277	29.8%	285	30.3%
Enrolled in School Only	116	14.0%	158	17.0%	134	14.2%
Employed and Enrolled in School	237	28.5%	237	25.5%	272	28.9%
Unemployed and Unenrolled	217	26.1%	245	26.4%	214	22.7%
Data Not Available	38	4.6%	12	1.3%	37	3.9%

PAROLE ADJUSTMENT AT DISCHARGE						
Satisfactory to Excellent	514	61.9%	610	65.7%	645	68.5%
Poor to Unsatisfactory	252	30.3%	262	28.2%	248	26.3%
Not on Parole at Time of Discharge	38	4.6%	46	5.0%	43	4.6%
Data Not Available	27	3.2%	11	1.2%	6	0.6%

Job / School Status at Parole Discharge



¹The 'Home' category includes parent(s), guardian, adoptive family, foster family, relative, spouse, friend, independent living.

COMMITMENT DEMOGRAPHIC TRENDS

FY 2006-07 DATA BY REGION

	CENTRAL			NORTHEAST			SOUTHERN			WESTERN		
	New ¹	ADP	LOS ²	New ¹	ADP	LOS ²	New ¹	ADP	LOS ²	New ¹	ADP	LOS ²
GENDER												
Male	284	550.3	19.2	211	332.3	19.3	158	268.7	21.2	76	115.6	18.5
Female	28	62.6	17.4	34	41.2	13.4	19	33.6	21.0	17	20.6	11.7
TOTAL	312	612.9	19.0	245	373.4	18.3	177	302.3	21.2	93	136.3	17.6
ETHNICITY												
Anglo-American	129	203.4	19.3	107	176.3	18.2	81	135.9	22.5	57	82.2	18.4
African-American	82	173.6	19.5	16	20.5	17.7	30	63.2	22.0	6	5.5	14.2
Hispanic/Latino	92	220.0	18.3	116	165.4	18.2	61	96.4	19.1	21	33.9	14.8
Native American	4	9.4	12.9	2	6.9	19.3	0	2.7	14.2	7	11.6	21.2
Asian-American	4	3.9	35.4	3	2.2	28.1	0	0.0	12.8	0	0.0	N/A
Other	1	2.7	21.5	1	2.0	N/A	5	4.2	13.3	2	3.1	14.4
AGE³												
11 Years	0	0.0	N/A	0	0.0	N/A	0	0.0	N/A	0	0.0	N/A
12 Years	0	0.0	31.3	0	0.0	24.4	3	0.6	62.1	0	0.3	N/A
13 Years	2	0.0	27.3	7	2.4	28.1	7	0.9	34.4	4	2.3	14.7
14 Years	23	5.9	25.6	23	4.4	20.7	22	9.7	30.0	8	2.7	15.3
15 Years	56	36.0	19.8	30	25.6	22.5	21	27.2	20.5	24	13.2	21.2
16 Years	85	90.3	19.3	62	57.0	17.0	50	47.3	21.2	21	24.9	17.5
17 Years	116	155.4	16.9	88	85.8	15.6	61	81.6	17.5	29	37.8	16.9
18 Years	21	190.8	15.7	30	113.6	15.2	12	78.2	18.6	7	35.3	17.0
19 Years and Older	9	134.4	9.8	5	84.7	15.5	1	56.8	N/A	0	20.0	N/A
Average Age at Commitment:	16.8 Years			16.8 Years			16.5 Years			16.4 Years		
SENTENCE TYPE												
Non-Mandatory	238	459.3	18.8	145	202.7	16.2	150	252.5	21.3	61	90.8	17.0
Mandatory	57	109.6	19.5	82	126.0	20.5	22	25.7	19.8	24	24.2	17.8
Repeat	13	33.6	16.9	14	26.6	18.6	3	14.4	15.2	8	19.5	19.4
Violent	2	7.0	24.7	0	2.7	N/A	0	0.0	N/A	0	0.3	19.6
Aggravated Juvenile	2	3.4	45.9	4	15.4	44.2	2	9.7	55.0	0	1.5	37.3
Data Not Available	0	0.0	0.6	0	0.0	N/A	0	0.0	N/A	0	0.0	N/A

¹Indicates new commitments.

²Commitment LOS expressed in months.

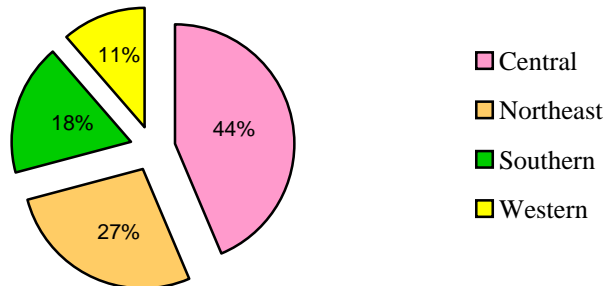
³Actual counts and LOS for each age category correspond to age at commitment. ADP figures for each age category are based on the youth's age on the last day of the fiscal year.

DISCHARGE DEMOGRAPHIC TRENDS

FY 2006-07 DATA BY REGION

	CENTRAL		NORTHEAST		SOUTHERN		WESTERN	
	N	%	N	%	N	%	N	%
DISCHARGED YOUTH								
DISCHARGE PLACEMENT								
Adult Jail/ Corrections	50	12.2%	20	7.8%	22	13.0%	8	7.5%
Home ¹	342	83.4%	216	84.0%	136	80.5%	88	83.0%
Group Living	2	0.5%	5	1.9%	2	1.2%	7	6.6%
Other Placement	11	2.7%	15	5.8%	6	3.6%	3	2.8%
Escape	1	0.2%	0	0.0%	2	1.2%	0	0.0%
Data Not Available	4	1.0%	1	0.4%	1	0.6%	0	0.0%
TOTAL	410	99%	257	100%	169	100%	106	100%
JOB/ SCHOOL STATUS								
Employed Only	140	34.1%	88	34.2%	43	25.4%	14	13.2%
Enrolled in School Only	65	15.9%	40	15.6%	18	10.7%	11	10.4%
Employed and Enrolled in School	95	23.2%	55	21.4%	53	31.4%	69	65.1%
Unemployed and Unenrolled	102	24.9%	70	27.2%	36	21.3%	6	5.7%
Data Not Available	8	2.0%	4	1.6%	19	11.2%	6	5.7%
PAROLE ADJUSTMENT								
Satisfactory to Excellent	292	71.2%	162	63.0%	110	65.1%	81	76.4%
Poor to Unsatisfactory	101	24.6%	72	28.0%	53	31.4%	22	20.8%
Not on Parole at Time of Discharge	14	3.4%	22	8.6%	6	3.6%	1	0.9%
Data Not Available	3	0.7%	1	0.4%	0	0.0%	2	1.9%
PROGRAM TYPE								
	LOS (Months)							
Secure	8.0		7.9		8.0		6.9	
Staff Supervised	8.9		7.8		10.1		7.9	
Community Residential	1.9		2.3		2.9		2.1	
Total Commitment	19.0		18.3		21.2		17.6	
Parole	6.6		6.8		6.9		7.3	
Total Commitment & Parole	26.1		25.1		27.8		24.1	

FY 2006-07 Percent of Discharged Youth by Region



¹The 'Home' category includes parent(s), guardian, adoptive family, foster family, relative, spouse, friend, independent living.

Glossary of Terms Used

Disclaimer: *These definitions are provided for quick reference purposes only. Please refer to the Colorado Revised Statutes for more complete definitions of legal categories and conditions.*

Adjudication – The result of an adjudicatory hearing in which the court determines that it has been proven beyond a reasonable doubt that a juvenile has committed a delinquent act, or that a juvenile has pled guilty to committing a delinquent act.

Aggravated Offender (Sentence Type) – see *Sentencing Special Offenders*.

Assessment - Youth committed to DYC are assessed to determine a youth's classification level and needs for appropriate placement and program referral.

Average Daily Population (ADP) - The average number of youth present in a facility or program during the reporting period.

Colorado Client Assessment Record (CCAR) - An assessment tool used to evaluate mental health treatment needs.

Community Accountability Program – Youth could be sentenced to the Community Accountability Program (CAP) as a condition of probation, after the cessation of the Regimented Juvenile Training Program. The sentence included a 60-day residential program, focusing on restorative justice and youth skill development. The residential phase was followed by an intensive aftercare program for 120 days, or until the period of probation expires. The aftercare phase, also based on a restorative justice model, focused on continued service delivery to youth and families as well as reintegration into the community. Funding for CAP was eliminated in the FY 2002-03 Supplemental Reduction.

Clients Served: Residential & Parole (commitment) - The total number of youth served in a particular program during the reporting period. Total clients served in a given category (e.g. secure or staff-supervised) represent unduplicated counts of clients served in those categories. Since youth can be served in more than one type of program in the course of a year, the total clients served in a particular category will not equal the sum of the clients served in each program.

Clients Served: Detention - The total number of youth served in a particular program during the reporting period. Total clients served in a facility or program (e.g. Adams YSC) represents unduplicated counts of clients served in those facilities. Since the same youth can have multiple admissions to detention and be served in more than one particular facility in the course of a year, the total clients served in all facilities will not equal the sum of the clients served in each facility.

Commitment - Commitments are dispositions of juvenile cases resulting in the transfer of legal custody to the Department of Human Services by the court as a result of an adjudicatory hearing on charges of delinquent acts committed by the youth.

Commitment Sentence Type - Juveniles who have been adjudicated delinquent and committed to the Division of Youth Corrections can be given either non-mandatory or mandatory sentences. Mandatory sentences require that a youth spend a specified minimum amount of time in out-of-home placement and can include repeat and violent offenders. Juveniles can also be sentenced as aggravated offenders (Section 19-2-601, C.R.S.).

Community Residential Placement – DYC contracts with a number of private vendors to provide community-based programs to youth presenting the lowest risk of re-offending and youth transitioning from more secure programs.

Detention - The custodial status of youth who are being confined or supervised after arrest or while awaiting the completion of judicial proceedings. Detention youth are served in secure state-operated or staff-secure (privately-operated) facilities. Some detention youth are served in non-residential, community-based supervision programs.

Detention Admission - Each admission to detention for temporary custody of youth is tracked independently. In contrast to unduplicated counts of clients served in detention, one youth can have multiple admissions for a single incident. For example, if a youth is admitted to detention on a pretrial basis (preadjudicated) and released, a later sentencing to detention on the original charge would count as a separate admission, even though it is the same youth and the same incident. Likewise, if the youth serves the sentence on weekends, each weekend admission counts as a separate admission.

Detention Sentence - The court imposed sanction of confinement to a detention facility as a disposition of a delinquency adjudication. Major sentence types include probation sentences, traffic sentences, handgun sentences, municipal sentences, game and fish sentences, contempt sentences, and non-probation sentences for a delinquent act.

Initial Commitment Classification Instrument (ICCI) - An objective commitment classification instrument is administered during assessment to guide the placement decisions concerning the type of commitment program most suitable for individual youth given the severity of their commitment offense coupled with the risk of re-offending.

Length of Stay (LOS): Residential - All residential LOS figures are measured in months and are calculated for those discharged youth who spent time in the program for which LOS is reported (e.g., secure) prior to parole.

Length of Stay (LOS): Detention - The amount of time spent in a detention facility or program during the time period. All detention LOS figures are measured in days and are based on released youth.

Length of Stay (LOS): Parole – The amount of time spent on parole status. Parole LOS is measured in months and are based on discharged youth.

Mandatory Sentence Offender- See *Sentencing Special Offenders*.

Municipal Sentence - Detention sentence imposed by a municipal court for violation of municipal ordinances.

New Commitment - Commitment of youth who were not previously committed, or who were previously committed but had been discharged from DYC.

Non-Mandatory Sentences - These sanctions involve no minimum out-of-home sentence length. The maximum sentence length cannot exceed 24 months. The Juvenile Parole Board determines release from commitment to parole status.

Other Residential – Placements include Job Corps, Group Homes, Hospitalization, etc.

Parole - The status of an offender conditionally released from a residential setting by discretion of the Juvenile Parole Board. Colorado juvenile offenders have a mandatory minimum parole length of 6 months. While on parole a youth is placed under the supervision of a parole officer and is required to observe conditions of release set by the parole officer and the Juvenile Parole Board.

Parole Revocation - The administrative action of the Juvenile Parole Board, which removes a youth from parole status in response to a violation of lawfully required conditions of parole, including the prohibition against commission of a new offense.

Parole Suspension - The administrative action of the Juvenile Parole Board, which removes a youth from parole status in response to a violation of lawfully required conditions of parole, including the prohibition against commission of a new offense. Reconsideration of parole must occur within 90 days on a date determined by the Juvenile Parole Board.

Parole Violation – Actions by a parolee that do not conform to the conditions of parole.

Preadjudicated - The legal status of youth pending delinquency adjudication decisions. Often these youth are referred to as pre-trial youth since they are generally admitted to detention pending some court action. This category also includes youth who are serving a sentence, such as probation, on a prior delinquency adjudication and who are in detention pending a new court action.

Prior Adjudications - Adjudications that occurred prior to the current detention or commitment event.

Prior Out-of-home Placements - Placements in Social Services or DYC residential programs or other treatment programs prior to the current commitment sentence.

Repeat Offender - see *Sentencing Special Offenders*.

Regional Management Structure - Decentralized DYC management structure comprised of four geographic regions in the state.

Residential Programs - Programs that provide 24-hour care.

Residential Length of Stay (LOS) - The average amount of time spent in all residential programs (assessment, secure, staff secure, and community programs) for youth discharged from DYC during the reporting period.

Secure Residential Facility – A facility with physical security features such as locked doors, sally-ports, and correctional fencing.

Sentencing Special Offenders (see Section 19-2-908, C.R.S.)

- a. **Mandatory Sentence Offender** – These sanctions specify a minimum time period of up to 24 months or less during which a youth must be in an out-of-home placement.
- b. **Repeat Offender (Sentence Type)** - A 'repeat' sentence type can be imposed on a juvenile who has been previously adjudicated a juvenile delinquent, and is adjudicated a juvenile delinquent for a delinquent act that constitutes a felony, or if his or her probation is revoked for a delinquent act that constitutes a felony. The court may or may not designate a minimum sentence length.
- c. **Violent Offender (Sentence Type)** - A juvenile may be sentenced as a violent offender if he or she is adjudicated a juvenile delinquent for a delinquent act that constitutes a crime of violence as defined in Section 16-11-309(2), Colorado Revised Statutes.
- d. **Aggravated Offender (Sentence Type)** – These sanctions specify a time period of three to seven years, during which time a youth must remain in the custody of the Department of Human Services. Contingent upon court approval, youth may be eligible for non-secure placement, parole, or transfer to the Department of Corrections (adult corrections).

Staff-Supervised Residential Facility – Privately owned and operated, staff-supervised facilities provide 24-hour line of sight supervision of youth.

State Owned / Privately Operated Programs - Detention or commitment programs which are administered by contract service providers in DYC owned facilities.

State Owned / State Operated Programs - Detention or commitment programs which are administered by DYC employees in DYC owned facilities.

Residential & Parole Length of Stay (LOS) - The average amount of time in DYC custody (sentence start date to discharge date including parole) for all youth discharged from DYC during the reporting period, not including escape time.

Violent Offender (Sentence Type) – see *Sentencing Special Offenders*.